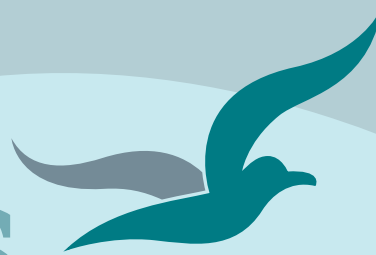


Bream Bay News



Est.1967 | Locally owned and operated | Delivered FREE twice a month 16 January 2025

Affordable Quality

- * SECURITY DOORS
- * INSECT SCREENS
- * SHOWER DOORS
- * BLINDS
- * AWNINGS
- * WARDROBE SYSTEMS

www.homeplus.co.nz



34 Albert St
Whangārei

Est. 1977

PH: 438 9452

whangarei@homeplus.co.nz

Beach protest planned against Fast Track sand mining in Bream Bay

Local opposition to the Fast Track Bream Bay sand mining application by McCallum Brothers Ltd. is mounting.

An organising group was formed at a well-attended meeting in the Ruakākā Anglican Church Hall just before Christmas on Thursday 19 December. The group has representatives from Whangārei Heads through to Langa Beach, including One Tree Point, Takahiwai, Ruakākā and Waipu.

A mass protest is planned for Anniversary Weekend on Sunday 26 January with a call for opponents of the sand mining to gather on the beach just south of the Ruakākā Surf Lifesaving Club at 11.30am to form a Say No pattern and convey a strong message to politicians.

People were lining up in the Ruakākā shopping centre before Christmas to sign a petition to convey their opposition to the proposal, which would see around 8 million cubic metres of sand to be taken from the bay over 35 years. The petition is also being circulated on online platforms including the Whangārei Heads Community newsletter.

A member of the group Cheryl Laurie said, "Public sentiment is overwhelmingly outrage that this can happen with no process for public submission or the usual resource consent from Northland Regional Council."

Continued on page 3

More than bagpipes and caber tossing at the Waipu Highland Games



Competitors in the women and girls sack race

There was lots happening at the Waipu Highland Games held on 31 December 2024. As well as the usual Highland Dancing, Heavy Weights competition and Piping and drumming there were running races, two legged races and sack races for kids and adults, a tug of war contest, a variety stage with local performers entertaining community stalls and food stalls, stalls by various clans and a line up of food trucks.

More Highland Games pictures on Pages 4, 5 and 7.



Waipu 23a Seascaple Crescent

709_{sqm}

Asking Price \$350,000

Christine Birss 027 235 4323 christine.birss@bayleys.co.nz

MACKYS REAL ESTATE LTD, BAYLEYS, LICENSED UNDER THE REA ACT 2008

Affordable step onto the property ladder

If the convenience of being within walking distance of the estuary/river is appealing to you, then take a closer look at this section.

Inland views rather than sea, but you can see that the price reflects this.

Whether you walk along the road to intersection with Cove Rd (and cross to the shared pathway for walking/cycling) or up the road and down the ROW, there are a few options for walking or cycling. Or else you can walk through and use the ROW from River View to the edge of the river.

Start your property journey today

bayleys.co.nz/1153986

BAYLEYS

Buon Anno and welcome to 2025!



2024 ended with a series of successful community events, and the hugely popular Waipu Highland Games was the finale. While the weather was challenging, the crowds turned up in their thousands to celebrate this long running and much-loved event. I was honoured to play a small role in the proceedings, and I thank the volunteers and the Waipu community for their hard work in making this event such a success for our District.

We're well into the swing of things here at Council, and 2025 is already shaping up to be a very busy year. The Endless Summer Festival has kicked off, featuring more than 60 events across our District and running right through until the end of March. It's been great to see so many people enjoying the Kiwi Art Trail in Whangārei's CBD and around the Hātea Loop. The collection of more than 20 kiwi sculptures have been turned into stunning pieces of art by talented New Zealand artists, two of whom are Whangārei locals.

When the trail ends, the sculptures will be auctioned, and proceeds will go towards kiwi conservation. It's a great cause, and well worth taking the whole family for a walk around the trail.

The festival is also packed with markets, music events, workshops, fishing competitions, sporting fixtures, theatre shows and much more - and as many of the events are family-friendly, accessible and free (or entry by koha), you'll find there really is something for everyone.

There will be a new batch of cruise ship visitors enjoying our District starting from 18 January, as Whangārei welcomes four cruise ships into our waters. This is great news for our local economy, and I look forward to warmly welcoming our visitors when they arrive.

2025 is a major year for working with our neighbours, as Top Energy and Northpower are improving Northland's energy resilience with Transpower. Our four Councils are aligning to be a driving force for Northlands economy. For as they say when Northland works together who is prepared to stop us.

Most importantly, 2025 is an elections year for local government. You'll see the Electoral Commission at more Council events, as we encourage residents to check their enrolment status ahead of the elections. I can't stress enough how important it is to take part in the local elections, and making sure you're enrolled to vote is the first step.

You can learn more about the local elections while celebrating everything you love about Whangārei District, at our first ever 'Love it Here Festival' being held on 14 February to celebrate the opening of Lover's Lane. A Love it Here Festival, on Valentine's Day, at Lover's Lane - what a great start to 2025!

This year will be busier than last year, I am sure of that, and I look forward to working closely with our local communities and our regional neighbours in the months to come.

Let the fun begin!

See all upcoming events on Council's website: www.wdc.govt.nz/Events

His Worship the Mayor, Vince Cocurullo

THE BREAM BAY NEWS

is published by Bream Bay News Ltd. Address : RD 2, Waipu
Phone: 027 432 0070

E-mail: breambaynews@xtra.co.nz Website: www.breambaynews.co.nz

Editor - Marilyn Cox. Accounts - Susan McRae.

Technical assistance - Geoff Spencer

Advertising design and website maintenance - Megan Lea.

Printed by NZME

EDITORIAL

I doubt 8 million cubic metres of sand can be dredged from Bream Bay without major environmental impact

Welcome to the first issue of the Bream Bay News for 2025. It's going to be an interesting year.

My main hope at this time is that there is a ceasefire in Gaza and the genocide the Israeli army is carrying out there comes to an end. How can the world sit by and watch this happen?

I read that there are moves afoot to bring the remaining Israeli hostages home and for Israeli troops to withdraw from the Palestinian territory. If negotiations are successful and these two things come about, that would be a wonderful start to the year. Residents and holidaymakers in the Ruakākā beach area had their water supply cut off for most of Wednesday of last week (8 January). It was, I believe, an emergency situation with the water main about to rupture and notice was sent on social media sites just a few days prior. It seemed a pretty drastic thing to happen in the summer holiday season. On that same day there was a planned six hour electricity outage in Mountfield Rd. where I live and work which caused problems in the preparation of this issue of the Bream Bay News. However watching the plight of the people of Gaza on Al Jazeera news: seeing babies die of hypothermia because their families' homes have been flattened by Israeli bombs, watching people scrambling for meager food rations which have been severely limited by Israeli blockades and shelling of aid convoys, injured people being carried on bloodied stretchers into bombed out hospitals where medical staff are arrested and detained by Israeli troops puts these inconveniences well and truly into perspective.

Opposition to the McCallum Brothers Ltd Fast Track sand mining in Bream Bay proposal is gathering pace with several petitions being circulated and a protest on the Ruakākā Beach south of the surf club planned for Anniversary weekend at 11.30am on Sunday 26 January.

I am not sure what the effects of removing 8 million cubic metres of sand over 35 years from Bream Bay would be, but doubt this can be carried out without major negative environmental side effects. Our beaches are Bream Bay's biggest assets. We need to protect them.

Remember the tens of millions of dollars of public money that went into building Whangārei's Hundertwasser Centre with the hope it would attract visitors to the district. Many more holiday makers and tourists come our way to enjoy our lovely white sandy beaches. We can't risk losing this asset.

Often we look towards the next big new shiny thing without fully appreciating the value of what we already have.

Earlier today I went down to the beach for a dip in the sea. The spinifex flowering over the fore dunes was golden in the morning light. The water was cool and crystal clear and the sunlight made patterns on the seafloor.

Apparently the sand taken from our bay would be used to make concrete required for Auckland's continued expansion. The words of that old Joni Mitchell song come to mind - "They paved paradise to put up a parking lot."

Marilyn



**HAMMER
HARDWARE**
It's your local

For all your Household Needs, DIY and Gardening Supplies,
Fencing Equipment, Plumbing & Electrical Fittings.

Time to conquer the summer projects.

OPEN 7 DAYS Monday - Friday 8:00am - 5:00pm
Saturday 8:00am - 4:00pm | Sunday 9:00am - 3:00pm
Public Holidays 9:00am - 3:00pm

Waipu Hammer Hardware | 35 the Centre, Waipu | 09 432 0292

Beach protest planned against Fast Track sand mining in Bream Bay

Continued from Page 1

Auckland dredging sand to supply into the Auckland construction market. In April last year it was denied a bid to renew its dredging permit at Pakiri by the Environment Court and was ordered to pay \$500,000 in costs to the community groups, which had opposed its application. McCallum Brothers has appealed this decision to the High Court.

MBL had taken over a resource consent for sand mine at Pakiri in 2020 but had been extracting sand from the area, alongside other sand extraction companies, since the 1940s.

The Fast Track legislation was passed by the Government on 17 December 2024. A Government Advisory Group selected 149 projects, from 384 submissions, to be given fast track status. The Bream Bay Sand Extraction Project was given a low priority by the Advisory Group but was still selected.

MBL is likely to submit its full proposal early in 2025.

In reply to a letter sent by Bream Bay Coastal Care expressing concern about the sand mining proposal, Callum McCallum, Managing Director of MBL said his company had commissioned 15 expert reports on such subjects as: coastal processes, navigation, marine mammals, fisheries, water quality etc. and he expected these to be completed in "the next month or so."

Mr. McCallum said, "You will be happy to know that our proposed area has been identified by Tonkin and Taylor (respected Coastal Engineers), as being situated well outside the Depth of Closure, which means in laymen terms, that we will have no effect on the beach and dunes as we are too far offshore (greater than 4.8km at the closest point), and deeper than 20m. ... We are also well outside the foraging range of Fairy Terns"

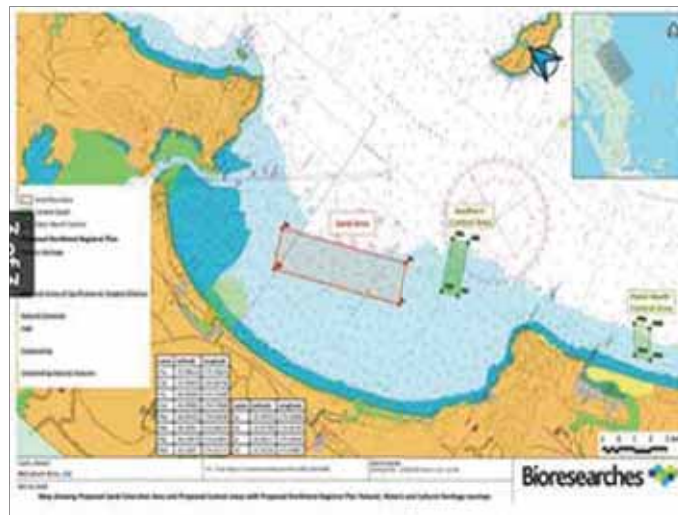
Other concerns have been raised however. Scallop fisherman Patrick Chaplin said no scallops were left behind after the MBL sand dredging at Pakiri and huge rectangular holes were left on the seafloor.

Other opponents say dredging comes at a cost to marine ecosystems, kills seabed organisms, disturbs sediment, causing contaminants to be released into the water columns, and the noise it makes will impact sea mammals. There are concerns for the integrity of the Whangārei Harbour Marine Reserve and fishery of the bay and harbour.

The Fast Track legislation does not allow for community consultation.

A panel will decide on the MBL application. There is no requirement to hold a hearing and if the panelists do decide to hold one only the applicant and invited experts will be heard.

Area in Bream Bay identified for sand mining to be undertaken



DEADLINE SALE



LANGS BEACH 35 HECTOR LANG DRIVE, LANGS BEACH CONTEMPORARY BEACHFRONT

Overlooking the pristine sands of Langs Beach, this contemporary 345m² beachfront residence designed by the acclaimed Crosson Clarke Camachan Architects offers the perfect blend of modern design and coastal elegance. With 5 generously proportioned bedrooms, a study, and 4 bathrooms, this opulent 3 level home is designed for both comfort and style.

This is undoubtedly one of Langs Beach's finest residences.

DEADLINE SALE
12pm, 13th February
2025 (unless sold prior)

VIEW by appointment
5 bedrooms, study,
4 bathrooms

Blair Chandler
Chandlers Real Estate
A branch of Independent
Agent
REAA 2008
E: blair@chandlers.co.nz
M: +64277889933
W: chandlers.co.nz



Planned Ruakākā Village Kāinga Ora houses dropped from 2025/2026 building programme

The planned 50 new Kāinga Ora homes in Ruakākā will not go ahead in the NZ Housing agency's 2025 to 2026 build programme. However, Jeff Murray, Regional Director for Northland, said "there is potential for it to be assessed again for future programmes."

Of the 16 existing homes on the Peter Snell Rd./Tamingi St. site, nine are currently vacant.

Mr. Murray said, "We are working with our contractors to assess and carry out necessary repairs in order to return these homes to our letting pool. Repairs are now underway on five of these homes."

He said Kāinga Ora's placement team will start the re-tenanting process once repairs are complete, "ensuring local need is prioritised."

The sum of \$882,000 had already been spent on the proposed 50 new homes before the project was paused by the Coalition Government.

After a request for this information under the Official Information Act, Caroline Butterworth Deputy Chief Executive for Kāinga Ora in Auckland and Northland told the Bream Bay News, "I can advise that to date, the planning, design and consenting costs for the proposed 50 homes in Ruakaka is

Continued on page 10



Expert skin cancer checks and treatments

As your skin cancer doctors, it is our mission to save lives by making skin cancer care affordable and accessible to all Northlanders. Our focus is on the early diagnosis and effective treatment of skin cancer in a friendly and welcoming environment.

09 438 2188 | admin@skincancerdoctors.co.nz | 11A Norfolk Street, Whangarei
www.skincancerdoctors.co.nz



Pictures from the Waipu Highland Games



Little Highland dancer Ivy Jean Baker aged five and a half from Onehunga

With You every step of the way



CENTURY 21 Jean Johnson Realty

Sales and Property Management
Dargaville, Whangarei, Bream Bay
W dargaville.century21.co.nz P 09 439 7575

As seen on *Grand Designs* 2019



COASTAL CONSTRUCTION PROJECTS

0274 320 007

REGISTERED MASTER BUILDER QUALIFIED TRADESMAN CARPENTERS MARCUS@CCP.NZ WWW.CCP.CO.NZ

TRACTOR MULCHING | PILE DRIVING | RETAINING WALLS
DRILLING | ROADING EARTHWORKS | DEWATERING | DRAINAGE



HOPPER CONSTRUCTION

EMAIL: GUY@HOPPERCONSTRUCTION.CO.NZ
PHONE: BOWEN 027 446 3119



Morgan Tabuteau of Cromwell competing in the under 21 piping competition



Families take shelter under umbrellas as a rain squall sweeps through during the opening ceremony

Umbrellas came in useful at the Waipu Highland Games, held this year, in a break with tradition on the final day of the year rather than on the first.

Squally showers swept across the Caledonian Park at intervals but the show went on with those who had lived in or visited Scotland commenting cheerfully that this was just like typical summertime weather in that country, and perhaps this is why their ancestors made the journey to the other side of the world to settle here.

The Caledonian Society has made a big effort to cater for children with running races, novelty races, a junior tug 'o war and Mini Highland Games and a free bouncy castle which was able to be moved into the Celtic Barn and despite the rain there were plenty of kids at the games.

The rain affected the number of paying visitors though, which looks to be somewhere between 30 - 40% down on last year.

Attendees at both the Helen McGregor Memorial piping competition on night and the Cellidh on New Year's Eve were up by around 30%, perhaps an indicator that the new date would have brought in

more people if the weather had been kinder.

There were also many new volunteers helping out on the day.

Asked if the event, which the Caledonian Society relies on to finance its operations had made a profit Lorna Murray ? said, "We haven't reconciled the finances for the games as yet so we don't know what the final bottom line looks like. The reduced gate takings will certainly have an impact, and the increased costs will not help."

A professional sound system had been brought in as this was something the games organisers had received negative feed back about in the past.

"Let's hope for a good summer with lots of caravanners and events in the park."

Lorna said, "It's going to be difficult to understand the impact of moving the day with such adverse weather conditions. We can't truly compare numbers with last year, which was a stunning day weatherwise. People are invited to comment on the change of date, the sound system or any other aspect of the games by emailing highlandgameswaipu@gmail.com

**BREAM BAY
CURTAINS
AND BLINDS**
(INDOOR AND OUTDOOR)
AND SHUTTERS

PH 0204 632 432
FOR A FREE IN HOME
CONSULTATION
CALL SUE

www.breambaycurtainsandblinds.com
bbcurtainsandblinds@gmail.com

CALL SUE TODAY
0204 632 432

LAWN CARE SERVICE



Call Now for a Quote

Lawn Mowing, Hedge Trimming,
Landscape Deliveries and Much More....

Contact: Doug Ph: 021 214 1777
E: mrmowbreambay@gmail.com

"NO JOB TOO BIG OR SMALL MR MOW CAN DO THEM ALL"

Builders of Quality Family Homes



Wakanui 155 sqm

\$438,650 incl gst

Includes: plans, consent, kitchen, appliances, tinted double glazed windows, tiles, carpet, blinds, heatpump.



"Hi, I'm Wayne Pickerill, Managing Director and Project Manager for your new Fowler Home. Enjoy quality and all the benefits of dealing with an efficient, low overhead, nationwide company, where I will take a personal interest and be involved through to completion."

Wayne Pickerill
Managing Director



FOWLER
HOMES™

More designs at www.fowlerhomes.co.nz or visit our office at 63 Walton St, Whangarei. Phone Wayne Pickerill 438 4840

The restoration of a hard working farm truck



Ian Hargreaves with his fully restored 1947 Ford Pickup truck, a vehicle that has been in his family since 1948

The restoration of this 1947 Ford Jail bar half-ton pickup truck has been an eleven-year project for Ford enthusiast Ian Hargreaves and, at a rough estimate, has cost him "something north of \$100,000".

The truck was purchased new by Ian's father and uncle in 1948 and was used on their farm at Oneriri until 1988 when it was retired and stored in a shed having clocked up over 600,000 miles.

"And those were truck miles", Ian said.

Each day during the milking season the truck would make a 13 mile round trip loaded with cans to meet the cream truck. It carted hay and limestone around the farm. The limestone was shoveled from the tray onto the farm roads.

It collected fuel and carried pigs and bobby calves. It travelled over the Brynderwyn Hill to pick up farm supplies from Whangārei and became an extra car whenever the family needed one.

Ian learned to drive in it and has an old photo of the truck's cab loaded up with camping gear on a family holiday.

In 2000 the Oneriri farm was sold and Ian with his son Graham and daughter in law Angela bought a farm in Waipu. The old truck came with them and was stored until 2013 when a new shed was built and the restoration began. The cab was dipped then tidied up by a panel beater. The motor was reconditioned by Mike's Engines in Whangārei and assembled by Ian.

The paint job is by Ian Zanders in Whangārei. Originally a fawn colour the truck is now a racy red. Re wiring was done by Geoff Spencer of Waipu. The windscreen and rear windows were fitted by Auto Mobile Glass and supplied by Metro Glass.

Ian did all the other restoration work with help from his family.

There are a few stories to tell along the way. For example, Ian found and purchased a set of chrome Jailbird panels early in the process and put them away for a few years until he was ready to fit them over the front grill. However, when he pulled them out he discovered one was missing. He sent to the United States but found he needed to purchase a complete set, an expensive exercise.

Ian is nearing his 90th birthday. He is happy that the restoration is finished and is confident the truck will remain as a treasured family heirloom.

Look out for Ian and his bright red pickup truck at the Waipu Car and Bike Show on Sunday 9 February from 10am to 2pm in Waipu's Caledonian Park

WAIPU LIONS CLUB PRESENTS

THE BBS TIMBERS WAIPU

CAR & BIKE

Show



Sun 9th February 2025
 10am - 2pm Caledonian Park, Waipu
Elvis in the Park!
 \$10 Entry, Children under 12 FREE, Family Pass \$30
 All enquiries phone Ron 021 992 445
 Alcohol, Dog & Patch Free Event
 All Proceeds go to Northland Rescue Helicopter & Local projects

Mike Whittaker Friday Night Cruise!

Principal Sponsor



BBS
Timbers Ltd
SPECIALTY TIMBER & PLYWOOD

In association with



FULL NOISE
AUTO RESTORATIONS LTD
RESTORATION, REPAIRS & MAINTENANCE

Media Partner



Smooth
105.6 FM
We live here too...



The truck before restoration began in 2013.
That's Ian lying underneath

More highland games pictures



Competitors in the open Highland Heavy Weight contests joined forces for the Tug of War



Father and son duo Matt and Ian Munro perform on the Variety Stage

BIG RED

TRUCKING

Owner /Operator Duncan Mackay



GENERAL CARTAGE SERVICE

Metal / Topsoil / Sand / Manure / Hay / Silage



WATER

Prompt Delivery And Reliable Service.

Healthboard Approved Drinking Water Carrier.

Call 021 070 8211



ATLAS

QUARRIES CONCRETE

Thinking concrete but don't know where to start?

Think Atlas Concrete

- We quarry the aggregate
- We manufacture the concrete
- We site visit to advise the best options
- We give you the choice of mix and colours
- We give a choice of local placers for you to choose
- We manufacture concrete to your requirements
- We stand by our product, you stand on it

Atlas Concrete

Your First Call for Concrete

Ph: 0800 888303 - Brynderwyn

or 432 5030 - Ruakaka

THE NEXT PUBLICATION DATE

of the Bream Bay News will be Thursday 30 January

The deadline for all copy is 4pm on

Wednesday 22 January



**Waipu's Best-Kept Secret:
Amazing Food, Coffee, and Stunning Views!**

Open Tuesdays to Saturdays 8am to 2.30pm
and on the following Sundays:

- 19th January 2025
- 26th January 2025
- 2nd February 2025
- 9th February 2025



Waipu
GOLF CLUB

At the Waipu Golf Club, 3229 State Highway 1, Waipu - Ph: 021 375 374



Bream Bay Community Patrol

Working with the Police to reduce crime in the Bream Bay area.

To inquire about joining,
contact Senior Constable Jordan White
Waipu Police Station – 432 4030



Police Report

Eight Family Harm Incidents

The number of family harm incidents has drastically reduced in the two weeks since Christmas, down from a high of 18 in the two weeks prior to just eight incidents in the fortnight to Monday 13 January

Drink Drivers

Police are out in force patrolling the Highway and holding drink-driving checkpoints. On Sunday 12 January a vehicle was stopped on State highway One at Oakleigh. The 33 year old woman driver from Auckland returned a breath to alcohol reading of 725 micrograms of alcohol per litre of breath, more than two times over the limit of 250 micrograms. She will be appearing in court on drink driving charges.

Road accidents

Fingers crossed but there have been no serious crashes resulting in death or injuries on State Highway One so far this summer.

- At midday on 30 December there was an accident on State Highway One at Waipu when a car collided with a truck. The car driver had attempted to overtake the truck as it was merging onto the highway. No one was injured.

- On January 4 at 1am a vehicle slid off the road and into a ditch on McCathie Rd. in Ruakākā. No one was injured

Another Facebook Marketplace scam

A couple who paid a deposit on some cheap outdoor furniture they saw on Facebook Market Place are out of pocket after they turned up to the advertised address to find it was a fake. Sergeant Simon Craig urges people to be very careful when purchasing goods on this platform and not to hand over any money until they see the item they intend to purchase.

Weather keeps New Year revellers indoors

Police report a quiet New Year's Eve, which Sergeant Simon Craig attributes to wet windy weather keeping people inside

Emergency repairs to water main closes off water supply to Ruakākā beach area

Last Wednesday 8 January the residents of Ruakaka South were left with no water supply and restricted access over the single lane bridge into the area as emergency repairs were carried out on the water main which runs under the bridge.

A water tanker was set up in the Ruakaka Beach Holiday Park and people were invited to bring their containers to fill. Traffic control was set up at the bridge allowing traffic to drive over at intervals. No one was held up for more than 15 minutes

But the temporary halt to the water supply caused a big problem for the holiday park as the camp was full with 1,000 guests staying there and water could only be supplied to five toilets.

The Ruakākā Residents and Ratepayers Association

has long advocated for a replacement of the one lane bridge and with it an upgrade of the water main into the Ruakaka south area.

The replacement is on the Council's long term plan but it just seems to keep getting pushed further to the back of priority projects, said the RRRRA Chairman Jules Flight.

Having just one road out of the area over the one lane bridge puts the people there at risk should an emergency situation develop.




ips-vaile@outlook.com
Mobile: 0211302797
Website: ips.org.nz

- Industrial Property Condition Assessments.
- Maintenance inspections/Records/Reports.
- Always Connected with Real-Time Reporting Systems
- Safety Upgrades/Repairs.
- Property Maintenance.
- General repair work.
- After hours service.
- Contractor management for urgent and critical repairs

Building Safety you can trust

Available 24/7 for your industrial needs



- ❖ Chemical and non-chemical house washing
- ❖ Window and house cleaning
- ❖ Painting and staining – exterior house, decking and fences
- ❖ Water blasting - decks, driveways and courtyards
- ❖ Clean guttering and downpipes
- ❖ Pest control and spider spraying
- ❖ Tree trimming with extension saw

Phone now for a FREE QUOTE

REVITALISE ❖ PRESERVE ❖ PROLONG ❖ MAINTAIN

TONY 021 196 2949 OR MELISA 021 075 6770

Ruakākā Village Kāinga Ora houses dropped from 2025/2026 building programme

Continued from Page 3

approximately \$17,640 per unit, a total spend of \$882,000. These costs were budgeted for and are comparative (per unit) with other similar redevelopment projects of this size and scale."

Planning costs include geotechnical work, site surveying, engineers, architects and planning consultants who provide technical advice on matters such as traffic, water and wastewater capacity, flood and hazard risk. \$13,000 was spent on community engagement, including a series of community information sessions held in the Bream Bay Trust.

We are now in a restricted fire season so no outdoor fires without a permit

We are now in a restricted fire season which means you need a permit to light an outdoor fire.

The whole of Northland - Te Tai Tokerau Northland has been placed in a restricted fire season until further notice.

This means anyone a fire permit authorised by Fire and Emergency is needed if you wish to light an outdoor fire. This can be applied for on line at: checkitsalright.nz.

very little or no rain is predicted in the region for the next 10 days, with strong southwest winds continuing. Northland District Manager Wipari Henwood said "Grass is drying out and forecast spike days - where fire risk rises sharply - increase the difficulty of controlling fires quickly once they have started," he says.

He said, it can take a large number of our fire brigades, many of them volunteers, with supporting resources and aircraft to contain and control wildfires.

The Waiharara fire in 2021/22 and a fire near Cape Reinga in 2023 required huge resources to combat and control.

"It took eight days to extinguish the Cape Reinga fire at a cost of more than \$1.5m, while the Waiharara fire burnt for 50 days at a cost of more than \$10m," Wipari Henwood says.

All Department of Conservation land on islands in Northland remain in a prohibited fire season, which means all outdoor fires are banned.

Where is climbing asparagus lurking?

Piroa Conservation has launched a Citizens Science project inviting people to share the location of the invasive climbing asparagus weed in the local area. A pin button which can be saved to mobile phones can be found on the Piroa Conservation Trust website or you can use a home computer to indicate the spot where the weed was found.

Originally from South America, climbing asparagus is one of Northland's most troublesome weed species and one of the most difficult to eradicate. It can grow in shade under the forest canopy and has tough, long-lived tubers that re-sprout easily. It smothers the forest floor and preventing the establishment of native plant seedlings and can smother established native plants species.



Birds, especially blackbirds, spread its seeds. There is advice on the weedbusters website on how best to get rid of it..

brought to you by
Promote Waipu
"We're loving it!" Waipu Business and Community Inc

Street Market

AND PARK

SUNDAY 26TH JANUARY

AUCKLAND ANNIVERSARY WEEKEND

9AM-2PM

CELTIC BARN CALEDONIAN PARK THE CENTRE, WAIPU

NO DOGS ALLOWED

160+ STALLS

FOOD, CLOTHING, ART,
PLANTS, PET SUPPLIES,
PRODUCE, JEWELLERY,
OUTDOOR FURNITURE,
HOMEWARES & MORE

EFTPOS & CASH OUT AVAILABLE

markets@promotewaipu.co.nz

[@waipustreetmarket](https://www.facebook.com/waipustreetmarket)

[@waipustreetmarket](https://www.instagram.com/waipustreetmarket)

Road works on SH1 over next few months

Allow extra time if you are travelling between Ruakākā and Whangārei over the next six weeks or so.

On Monday 13 January contractors began rebuilding the northbound left lane of State Highway One between Hewlett Rd. and Salmon Rd.

Work is expected to continue until 31 January. The passing lane will remain closed for the duration of the works and a 50km/h temporary speed limit will be in place 24/7.

Then on Monday 27 January contractors will begin rebuilding the southbound left lane on SH1 between Flyger Rd. and Prescott Rd.

The work will initially be untaken during the day and is expected to take two and a half weeks before followed by one and a half weeks of overnight work. Once again the passing lane will remain closed for the duration of the works, with a 50km/h temporary speed limit in place 24/7.

During the day works, traffic flow will be maintained in both directions, except for brief periods of stop/go to allow contractors to shift equipment or set-up and pack-down the site.

During night works, the road will operate under stop/go traffic management.

Blair Cunningham, a NZ Transport Agency Media Manager said, "NZ Transport Agency Waka Kotahi acknowledges this work will be disruptive for some road users and appreciates people's patience while this strengthening work is carried out to make the road more resilient."



Shipping Containers

20ft Shipping Containers,
Hire offsite \$180 per month + GST + Delivery
Minimum 3 months,

SPECIAL
1st month free for a minimum 6 month hire
20ft Containers @ Kepa Rd, \$280/m

Enquiries Ph 0212722739 / 021432701
Email: storagebreambay@gmail.com
www.storagebreambay.co.nz




09 988 9049
whittakersfunerals.co.nz | admin@whittakersfunerals.co.nz
25 Kepa Road Ruakaka 0171 | PO Box 241 Ruakaka 0151

Ruakaka Stationery & Gifts

Ruakaka Town Centre
Shop local for all your needs:
Stationery, Books, Toys, Magazines
Greeting Cards, Clothing, Gifts & Souvenirs

Phone
09 988 9370

New Zealand Post

Open Saturday until 6pm.

Raymond Lloyd Wilson (Captain Wilson) 22 January 1931 – 28 December 2024

A memorial service for Captain Ray Wilson was held in the Waipu Presbyterian Church on Thursday 2 January. This was an appropriate venue as Ray was a deeply religious man and a dedicated member of Bream Bay's Presbyterian congregation.

Minister Tom Waight recalled early after his arrival in Bream Bay when Ray asked if he could have a word. "I thought this will be interesting", but the topic Ray wanted to discuss was the declining number of attendees at the weekly Ruakākā Church services in the Camellia Avenue church.

Ray was made an elder of the Bream Bay Presbyterian church in 1979 along with John Noakes who recalls working alongside Ray sanding, painting and generally restoring the Camellia Avenue church around 30 years ago as well as various ongoing maintenance jobs on church buildings in both Waipu and Ruakākā. Ray was born in Invercargill but his family moved north to Motueka during the Depression Years when making a living on their small farm became too difficult. Ray left school at the age of 14 and worked briefly on an orchard before he found a job working on a coastal scow and began his long career as a seafarer. He relished the life and rose through the ranks to become a ship's master. Many times he took his charges safely over treacherous harbour entrance sand bars as he plied the South Island's coastal shipping routes.

His wife, Maisie, was the daughter of an orchardist. They were childhood sweethearts and married in 1952, a few months after the very divisive 1951 Waterfront Strike, through which Ray was a striking seaman.

Ray and Maisie had a young family through the years that Ray was at sea.

In 1967 Ray took on a position as a Pilot Launch Master with the Wellington Harbour Board. In 1970 the family moved to Ruakākā when Ray became Tug Master for the Northland Harbour Board. Captain Paul Hines remembers how the "grumpy old sea captain" would give him and his friends "a good telling off" when he found them jumping off the Marsden Harbour Boat Jetty or fish underneath.

Later, when Paul began his own career at sea as a deck officer cadet in the NZ merchant navy he received valuable guidance, advice, information and knowledge, which Paul said, "will always be remembered and treasured."

"Captain Ray became my mentor - and I thank him for that."

On his retirement Captain Wilson took on a new role as a volunteer Master on board the Mercy Ships, delivering medical aid and supplies to the Pacific Islands, Papua New Guinea and the Philippines. Maisie was able to accompany him on some of these trips.

Minister Tom Waight commented that in this position Ray was able to combine his love of the sea with his



Ray with his first wife and mother of his three children, Maisie

Christian faith.

When Maisie became ill with Alzheimer's disease Ray took care of her, which son Kenneth said revealed a new compassionate and patient side to his father. Maisie died in 2008 and in 2010 Ray married a long time family friend, also a church elder, Jennifer Sadler. Ray and Jennifer took several trips to the South Island together in their campervan before Jennifer died in 2020.

Ray stayed on his home in Marsden Point Rd where from his living room window he could watch the ships coming and going, including those his son Kenneth, who followed his father into a seafarer's career, was serving on.

Three years ago Kenneth moved back to live with his father so that Ray was able to stay on in his home almost to the end, as was his wish.

Captain Paul Hines, who now runs a restaurant with his wife at the Marsden Cove Marina, said Captain Wilson would often call down for a bowl of Marina Seafood Chowder and a chat.

Paul said, "I will be eternally grateful to have had the pleasure of this man as a colleague, a mentor but, most of all, a friend. Fair winds and smooth seas Captain Ray, your eight bells have finally rung – it's been an honour Sir."

Ray is survived by his three children: son Kenneth and daughters Linda and Judith with their husbands Gary and Richard, his eight grandchildren and six great grandchildren.

MAGIC TYRES
Large selection of used & new tyres
Car & Trailer Rims
Ph. 438 3534 103 Port Rd., Whangarei

Helen Frances 27 August 1954 - 19 December 2024

Waipu lost one of its finest creative people last month with the death of Helen Frances on 19 December.

Helen was heavily involved in Waipu's Art 'n Tartan wearable art show as production manager for two years and director for five. She wove together a mix of Celtic music, kapa haka and waiata matching these with the entries to come up with a spectacular stage presentation.

In a previous life she had managed a team of 80 social workers for the Auckland District Health Board and she brought these skills along with a love of theatre and music and a keen artistic sensibility to the Art 'n Tartan show.

Robert Spriggs, one of the shows models, said, "She was able to get us all working together. Robert recalls Helen telling him to "Just be yourself Robert" and remembers this as one of the nicest things anyone has ever said to him.

Helen's partner Sue Foster recalled how they hadn't liked one another very much when they worked together in the social worker team.

"She thought I was too lesbian and I didn't think much of her flouncy skirts and three inch high heels."

They were invited to a party by a mutual friend who apologized to each in turn about having invited the other. At this gathering they fell into conversation and discovered how much they enjoyed one another's company.

Sue said Helen was fiercely intelligent but would listen carefully to the opinions of others even if she disagreed with what they were saying.

They moved to Waipu together in 2006 having built a house high on a hill in Massey Rd. Helen became interested in landscape gardening and, not one to do things

by half, she undertook a masters degree in this discipline.

For her thesis she drew up a plan for a walkway on the shore of the Waihoihoi River. This has now been made a reality by the Waipu River Walk Group.

Helen was a strong supporter and advocate for the Waipu to Waipu Cove cycle and walkway and was disappointed when the trail didn't include a section alongside the Waipu Estuary.

She was a keen tramper and made a pact with Sue that together they would to on at least two adventures every year. Together they ticked off most of the Department of Conservation Great Walks. She took her niece Ngaio on some of these trips and counted it as an achievement when

Ngaio developed a love for the outdoors. Ngaio told how her aunt had taught her to read maps and how this could be an analogy for navigating through her life.

A nephew Garth told how Helen had been the first person to treat him as an adult had taken his ideas and plans seriously and had always provided him with support.

When her hips wore out with all that hiking Helen took up cycling with a passion and explored most of



Helen Frances

Waipu's rural roads as well as some of New Zealand's bike trails before she became too ill to do this.

Prior to her death she asked her good friend Juanita McGoldrick to read a short piece she had written at her service telling how much she loved bicycles, which she described as taking us back in time and being timeless. The reading concluded with the line – "Oh to cycle in the wind."



Artist impression



Nearby Mangawhai Heads surf beach

Mangawhai Residential Stage 1D Mangawhai Central

Craft your beachside lifestyle

Secure your dream section in the coastal town of Mangawhai - 80mins away from Auckland, but a world away in a paradise by the sea.

More than 20 residential sites are still available at affordable prices, starting from \$399,000. Lot sizes range from 512sqm to 3142sqm (more or less) and include wastewater, power and fibre connections.

Perfectly positioned between Mangawhai Village, Mangawhai Heads shops and surf beach with Te Arai Links and Tara Iti golf courses nearby.

bayleys.co.nz/1153903

Price Indication \$399,000

View by appointment

Christine Thomas AREINZ 021 560 008

christine.thomas@bayleys.co.nz

HACKY'S REAL ESTATE LTD, BAYLEYS, LICENSED UNDER THE REA ACT 2008

MARSDEN POINT HIGH TIDES

	AM		PM	
Thu 16 Jan	10.15	2.7	10.33	2.5
Fri 17 Jan	10.58	2.7	11.17	2.5
Sat 18 Jan	11.39	2.6	11.58	2.4
Sun 19 Jan	~	~	12.19	2.6
Mon 20 Jan	12.39	2.4	12.58	2.5
Tue 21 Jan	1.21	2.3	1.37	2.4
Wed 22 Jan	2.06	2.3	2.19	2.4
Thu 23 Jan	2.55	2.2	3.05	2.3
Fri 24 Jan	3.50	2.2	3.54	2.2
Sat 25 Jan	4.49	2.2	4.49	2.2
Sun 26 Jan	5.48	2.2	5.47	2.2
Mon 27 Jan	6.43	2.3	6.44	2.3
Tue 28 Jan	7.34	2.4	7.39	2.4
Wed 29 Jan	8.21	2.5	8.31	2.5
Thu 30 Jan	9.07	2.7	9.21	2.6
Fri 31 Jan	9.53	2.7	10.09	2.6

Family fun in the sun at the Ruakākā Racecourse



Watching the action from the bank - part of the crowd gathered for the Trigg Family Fun Race Day at the Ruakākā Track on Tuesday 7 January



99 MARSDEN PT ROAD, RUAKAKA

92 Units from 6 x 3 to 1 x 1

Each unit individually alarmed and monitored
Electrified security fence

Ph. 0508 273 262 or 0275 310 788

CLEAN - DRY - SECURE



INSIDE/OUTSIDE storage at 50 Cove Rd., Waipu

Free phone. 0800 432 135

enquiry@breambaystorage.co.nz

www.breambaystorage.co.nz

LIBRARY HOURS



RUAKAKA COMMUNITY LIBRARY

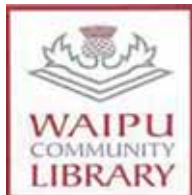
Takutai Place, Ruakaka

432 8406

Mon - Fri 9:30am-3:30pm

Sat 9am-1pm

JP Service available
Saturdays 10am - 11am.



Monday, Wednesday,
Thursday, Friday &
Saturday 10am - 1pm.
Tuesday 10am - 4pm.
Phone 432 0375

The sun shone for the Trigg Family Fun Race Day at the Ruakākā track on Tuesday 7 January and a big crowd turned out to soak up the atmosphere and watch the action.

As well as horses there were kids racing in two legged and running races and a tug o' war featuring the Ruakākā Surf Lifesaving Club, a Kids Zone and live music by the duo A25@stix. After the rain at the Waipu Highland Games the previous week the clear skies were a big relief to Whangarei Racing Club's Operations Manager Rebecca Swords. Two years ago the final races

had to be called off early when the warm damp weather caused the jockey's goggles to get steamed up and made racing dangerous.

So this year with all the work that goes into organising the big day, Rebecca and her team hard at work in the race club office were relieved and smiling.

They hadn't added up the gate takings but estimated there were a good few thousand people out there in the stands, picnicking on the grassy slopes or watching the action from the shade of the trackside tents.



The Clerk of the Course in his tailored red jacket leads the horses and their jockeys out for Race Four

Funding found to open college pool to the public over the school holidays



Life guards Abby Wright and Calais Henare Thompson with Bream Bay College Caretaker Shayne Wassell, who had the pool in pristine condition for opening day.

With contributions from the Alex McLean Trust and the Bream Bay College Board of Trustees, the school's pool has opened to the public from Wednesday 8 January.

Funding from the Lotteries Foundation, which has kept the pool open to the public with paid lifeguards in attendance for the previous few years was not secured for this summer and Selina Gordon - the

school's Board of Trustee Chairwoman, has been scrambling to find funds to make the pool available for at least some days over the school holidays.

From here on the pool will be open: Wednesday 15 January 12.00 noon- 6pm, Friday 17 January 12.00noon – 6pm, Saturday 18 January 12.00pm-4.00pm, Sunday 19 January 12.00noon – 4pm, Monday 20 January 12.00noon – 6pm, Wednesday 22 January 12.00noon – 6pm, Friday 25 January 12.00noon – 6pm, Saturday 26 January 12.00pm-4.00pm, Sunday 27 January 12.00pm-4.00pm, Monday 28 January 12.00noon – 6pm (Auckland Anniversary day), Wednesday 29 January 12.00noon – 6pm, Friday 31 January 12.00noon – 6pm, Saturday 1st February 12.00pm-4.00pm Sunday 2nd February 12.00pm-4.00pm

WAIPU TENNIS CLUB REPORT *By Paul Ramsay*

Bragging rights for our pre-Christmas social tennis went to Team 4 (Sean McCombe, Matt Watts, Connor Taylor, Louise Wickham (captain) and Gavin Carter (plus a few ring ins!). They beat Team 8 (John Bird, Bart Peters, (captain) John Chalk, Peter Gibb and Kirk Johnston on finals night. We held a couple of grading nights and a Christmas dress up night to finish off the first part of the season. Social nights hit off again on Tuesday 21 January at 6pm and every Tuesday after that. Come along and make sure you are part of the action.

Juniors and Intermediates will be back in Term 1, 2025 every Tuesday evening. All are getting valuable professional tuition from Grant at no cost. This tuition will help them become better players and strengthen our club for the future.

The final round of interclub was completed before Christmas. Our A grade team are placed third just five points behind the leaders. The Waipu Black B grade team are also third but 14 points adrift of the leaders. Waipu Yellow B grade team are in seventh position. If you are an Interclub player make sure you keep hitting over the break and are ready to go on 10 February 2025.

While in good order our courts have recently been groomed and had the dirt trampled in removed by a special machine. Sand levels were perfect and the grooming has made sure the courts are in top order for the second half of the season.

Waipu One Set Wonder tournament is set down for Saturday 15 February. This is a graded tournament meaning you will play people around your ability, met new people, enjoy some exercise and competitive play.

Remember to check our Facebook page for what is going on at the club.

Listed.co.nz
Making private sales simple

PRIVATE SALE

Build Your Perfect Retreat

16 Short Lane, Waipu
Asking Price \$475,000

FOR SALE
By Owner

Land: 4,005 m2
Ph: Monique 021 807 320

www.Listed.co.nz/P2754

- **Dream Lifestyle:** 4005m² section for your ideal home, retreat, or tiny house
- **Prime Spot:** Just 12 minutes to Waipu village
- **All-Day Sun:** Bask in stunning rural and bush views
- **Design Freedom:** Gently sloping land, no restrictive covenants
- **Fully Fenced:** Traditional batten and wire for security
- **Rare Opportunity:** The only section in this subdivision!
- **Adventure Nearby:** Close to Waipu Caves, trails and beautiful beaches

Your dream lifestyle awaits—act now!

THE NEXT PUBLICATION DATE

of the Bream Bay News will be Thursday 30 January
The deadline for all copy is 4pm on
Wednesday 22 January

NORTH TRAVEL
Exceptional Experiences

DEBBIE CHRISTIAN

BREAM BAY'S RESIDENT TRAVEL AGENT

AWARD WINNING CRUISE EXPERT

VIKING | PRINCESS | NORWEGIAN | MSC
SILVERSEA | CUNARD | CELEBRITY...

debbie@northtravel.co.nz
P. 09 699 3074 M. 021 252 4584

The Waipu Christmas Parade - notched up as a big success for its organiser - Promote Waipu

The Waipu Christmas Parade is being notched up at a big success for its organisers in Promote Waipu.

Peter Gibbs committee member and former chairman said it was impossible to count the spectators but he thinks it was one of the biggest crowds he has seen at the event.

"I was in the pilot vehicle and there certainly seemed to be lots of people lining the street."

For the past few years the Council had insisted that professional traffic safety be hired which has been expensive to arrange on Christmas Eve but the rules have changed. Promote Waipu had to submit a professional traffic management plan but was then able to use its own people to carry this out. The Waipu Lions helped out and Peter said he thinks this worked very well.

"Being local we had a better idea of the places where we needed extra marshals."

Using local volunteers rather than paid professionals saved the committee around \$2,000.



The Waipu Surf Lifesaving Club's colourful Moana 2 themed entry took out first prize



The Grinch was kept safely behind bars so he couldn't ruin Christmas by the Grinch Hunter, 18 month old Beauden Purnell. Following behind with the remote control is Beauden's mum Makayla. This Northpine float took the Judges' Choice prize.



The Waipu Rugby club juniors kept up an enthusiastic haka throughout the parade

WAIPU LOTTO & POST



Lotto
Postshop
Photocopying

Emailing
Newsagents
All stationery needs



The Centre, Waipu

Phone 432 0900

Float winners were:

- 1st - Waipu Surf Life Saving Club - their entry was Moana 2.
- 2nd - Waipu Fishing Club
- 3rd - The Beaton family.
- 4th - Waipu Surf Shack
- Judges' Choice - The Grinch by Northpine

National Morris Dancing Tour comes to Waipu

If you were wondering what all the noise was yesterday in Waipu (Wednesday 15 January at 1.45pm) it was the national Morris Dancing Tour, this year hosted by the Whangārei group, bringing together dancers from around the country as well as an American team.

If you missed the action in Waipu there will also be "dance outs": in the Mangawhai Historical Village alongside the Museum on Thursday 16 January at 10.30am and then at the Mangawhai Tavern at 2pm in the Whangārei CBD at 10.30am and then at 2.30pm on Friday 17 January and at the Whangārei Town Basin on Saturday 18 January at 10.30 am and 1.30pm.

Julie Scott of the Whangārei Morris Dancers said, "Morris dancing is a traditional English folk dance. We dance in groups of 6, 8 or in mass. We perform with live musicians; we wear bells, and dance in kit with sticks or hankies. It is very entertaining to watch for spectators."

WHAT'S ON IN BREAM BAY

- **NATIONAL MORRIS DANCING TOUR** comes to Waipu. Wednesday 15 January at 1.45pm
- **ONE TREE POINT ARTISAN MARKET** Next on Sunday 19 January 9am - 1pm. One Tree Point School quadrant and field. Fundraising for Whangārei Hospital Children's Ward.
- **MARSDEN COVE MARINA MARKET.** Sunday 19 January 9.30am - 2pm.
- **EVENTS AT TAHAMOANA FARM:**
 - Rock Soul and R & B. January 25, 7-11pm.
 - Summer Sounds, Hospice Fundraiser, February 1, 12.30 to 7pm.
 - Jazz on a Summers Day, February 2, 2-4pm
 - February's Funky Folk evening, February 8, 7-10pm.
 - Opera in the Garden. March 22, 3-6pm.
- 566 Cove Rd. Tickets from Eventfinda, Hammer Hardware or at the gate.
- **WAIPU STREET AND PARK MARKET** Sunday 26 January 9am - 2pm over 160 stalls in the Celtic Barn, Caledonian Park and the Centre, Waipu
- **RAY WOOLF AT THE MARSDEN YACHT AND BOAT CLUB.** Saturday 8 February at 2pm. Tickets \$35 - includes finger food. Bookings with prepayment needed. Ph. 027 235 9623 or email: peter@bassbass.co.nz
- **WAIPU BOUTIQUE SUNDAY MARKET** Next on Sunday 9 February. From 9am to 1pm in the Coronation Hall
- **THE WAIPU BBS TIMBERS CAR AND BIKE SHOW** Organised by the Waipu Lions. Sunday 9 February 10am - 2pm. Caledonian Park, Waipu. With live entertainment by Elvis impersonator. Entry \$10. Children under 12 free. All proceeds to Northland Rescue Helicopter and local projects
- **WAIPU MUSEUM** 36, The Centre, Waipu. Open seven days 10am- 4pm
- **THE KAURI MUSUEM.** The Kauri Museum is open 9am-5pm every day

BREAM BAY Link

MORNING


9.00am	Departs	Kaiwaka Kaiwaka Hall
9.15am	Departs	Mangawhai Village Village Shops Bus Stop (by restrooms)
9.20am	Departs	Mangawhai Heads I-Site
9.35am	Departs	Langs Beach Corner of Wairahi and Cove Roads
9.40am	Departs	Waipu Cove Beach Car park
9.50am	Departs	Waipu Monument Bus stop
10.10am	Departs	Ruakākā Peter Snell Road (opposite Takutai Place)
10.50am	Arrives	Whangārei Rose Street Bus Terminus

*For travel within Whangārei see CityLink Whangārei timetable
www.citylinkwhangarei.co.nz
or get your timetable from the Rose Street office.

AFTERNOON

3.00pm	Departs	Whangārei Rose Street Bus Terminus
3.40pm	Departs	Ruakākā Peter Snell Road (opposite Takutai Place)
4.00pm	Departs	Waipu Monument Bus stop
4.10pm	Departs	Waipu Cove Beach Car park
4.15pm	Departs	Langs Beach Corner of Wairahi and Cove Roads
4.30pm	Departs	Mangawhai Heads I-Site
4.35pm	Departs	Mangawhai Village Village Shops Bus Stop (by restrooms)
4.50pm	Arrives	Kaiwaka Kaiwaka Hall

EVERY THURSDAY



OPERATED BY
LEABOURN

Ph: 0800 994 404
E: office@leabourn.co.nz

FARES	One Way	Return
Kaiwaka	\$7.00	\$10.00
Mangawhai	\$7.00	\$10.00
Mangawhai Heads	\$7.00	\$10.00
Langs Beach	\$7.00	\$10.00
Waipu Cove	\$6.00	\$8.00
Waipu	\$6.00	\$8.00
Ruakākā	\$5.00	\$7.00

ROUTE DESCRIPTION
Kaiwaka/Mangawhai Road, Molesworth Road, Mangawhai Heads Road, Cove Road, The Centre Waipu, Nova Scotia Drive, SH1, Marsden Point Road, Peter Snell Road, Marsden Point Road, SH15A, SH1, Otaka Road, Maunu Road, Walton Street, Rose Street Bus Terminal.

If you would like to be picked up elsewhere along the route, please phone Leabourn's to arrange this on the Wednesday before you want to travel.

CONTRACTED TO:
Northland REGIONAL COUNCIL
For service updates visit:
www.buslink.co.nz
Feedback to buslink@nrc.govt.nz

**Phone the BREAM BAY NEWS 09 432 0209
or email: breambaynews@xtra.co.nz
if you know of something interesting
going on in Bream Bay.**

TRADES & SERVICE DIRECTORY

This Space Now available

**\$42.80 gst inclusive
or for regular customers
(six or more insertions)
\$38.50 gst inclusive**



RayWhite

Top 3%
OF THE RAY WHITE GROUP
INTERNATIONALLY

JAMES ALEXANDER
021 878 178

Licensed Salesperson, The Real Estate Shop Limited, Licensed (REAA 2008)

Plumbing & Heating CENTRE

- Plumbing New & Repairs
- Water Tanks & Pumps
- Gas fitting
- Drainage
- Roofing & Spouting
- Woodfire Installations

0800 326 123



Deadline for next issue - Wednesday 22 January

TRADES & SERVICE DIRECTORY

NORM FAGG
OWNER / OPERATOR

Act Now
Car Rentals

M: 0274 362 480
Nz Freephone: 0800 362 480
E: info@actnowrentals.co.nz

From \$45 per day - Min 4 days
Based in Ruakākā

027 495 4548

BREAM BAY GLASS

FOR ALL YOUR GLASS NEEDS



AMG
AUTO MOBILE GLASS

FAST WINDSCREEN REPLACEMENTS & CHIP REPAIRS

- Mobile service or come to our workshop
- Ultra competitive pricing. • Insurance claims welcome.
- Windscreen replacement in under an hour.

Phone Conrad on 022 036 2916
2/17 Gumdigger place.

BRADLEY
EARTHWORKS

• POND CLEANING • DRIVEWAYS • RACEWAYS
• LAND CLEARING • TREE REMOVAL • ROADING AND MORE

CALL ME TODAY FOR ALL YOUR EARTH & TREE WORKS
PHONE ROY 027 374 5090 WAIPU

ABSOLUTE CONCRETE

www.absoluteconcrete.co.nz
CULVERT PIPES
Spun and reinforced
Crane truck delivery
Drainage Merchant - Hardware Store
Email: sales@absoluteconcrete.co.nz
Phone (09) 431 2211
KAIWAKA

MACSWAY
SCAFFOLDING LTD

WE BUILD, HIRE, ALLOY MOBILES, TEMPORARY FENCING, & SHRINKWRAP

Ph: 09 432 7643 • 0274 726 772
macsway@xtra.co.nz Kepa Road, Ruakaka

O'MALLEY CONTRACTING LTD | CONCRETE SPECIALISTS

- FOUNDATIONS
- HOUSE SLABS | STAIRS
- RETAINING WALLS
- DRIVEWAYS | CARPARKS
- EXPOSED AGGREGATE
- COLOURED CONCRETE
- COMMERCIAL | RESIDENTIAL
- LICENCED BUILDING PRACTITIONER

Free No Obligation Quote

FAMILY OWNED & OPERATED

021 2200 198 | OMALLEYCONTRACTING.COM

Bream Bay Concrete Ltd.

Free Quotes • Reliable Service • Quality workmanship

- Concrete pads
- Shed floors
- Pathways
- Home floors
- Driveways
- Concrete cutting
- Excavation works
- Retaining walls
- Piling fences
- Profiles for homes & sheds
- Subfloors & boxing

Mark Royals Ph: 432 0107 Mob: 0274 433 130

BREAM BAY ELECTRICAL

Wiring Safe Homes And Businesses Throughout Northland

RESIDENTIAL COMMERCIAL INDUSTRIAL

0800 223 555 • 027 35 33 555
www.breambayelectrical.co.nz

24H SERVICE

BREAM BAY ACCOMMODATION

RUAKAKA


STUDIO - HOLIDAY HOMES - B&B

BOOK ONLINE OR PHONE

Ph: 09 432 7025 Mob: 021 2722 739
website for online bookings: www.breambayaccommodation.com

TC ENGINEERING
Metalwork Specialists

Stainless and Aluminium Welding and Bespoke Fabrication




Gates and outdoor furniture. Marine repairs and fabrication.
Onsite welding for farm repairs and modifications.
www.tcengineering.nz 021 145 7075 or 021 203 0309

Tractor Mulching

100hp tractor with high bodied yffails, mulcher, park finishing mowers, slashing, Gorse & blackberry spraying

Also mechanical tractor repairs

Phone Bain McGregor
0274 979 013
or 09 432 0527



Grant McLean
Stock Agent for Bream Bay

Ph 021 7758 48
Email: skincarla@xtra.co.nz

All aspects of stock sales including:
• dairy beef • bobby calves • store cattle • live export heifers
• sheep • pigs • supplying stock for slaughter

Also caters for small block holders.

Carrfields **Livestock**

Ruakaka Motors

Mechanical and Auto Electrical Repairs and Servicing

Monday - Friday 7.30am - 5pm
Tyres and Batteries
WOF testing Gold Card discount
Drop off, pick up service available in Waipu

Phone 432 7233

PARADISE QUARRY

PARADISE QUARRY STONEMASONS

Specialists in stunning stone for landscape
Suppliers & installers of northland's own schist for all your stonemasonry & landscaping Requirements

(09) 432 2722 or GEOFF (021) 972 139
www.paradisequarry.com

SUSAN JACOBS PAINTING
INTERIOR • EXTERIOR
027 370 5339



BLIND PRO

Blinds • Awnings • Shutters

Indoor blinds and outdoor screens

Call us today for a free, no obligation consultation and quote

ph 09 423 9661
website www.blindpro.co.nz
email info@blindpro.co.nz

McQUINN PUMPS

How's Business? ... It's Pumping!

24/7 SALES, SERVICE & INSTALLATION | PUMPS & WATER TREATMENT
PHONE SUPPORT AVAILABLE

0800 627 846
PHONE FREE

NOW AT 72 KIOREROA ROAD
—ALONG FROM RD1 & ITM

Deadline for next issue - Wednesday 22 January

TRADES & SERVICE DIRECTORY



HANSEN
Drainage & Earthworks

DRAINAGE:
* Septic Systems * Water Tanks * Truck & Digger Hire *
* Subdivisions * Domestic * Commercial *
Certifying Drainlayers

Licensed Contractor for
Waste & Drainage Work



EARTHWORKS:
* Subdivisions *
* Farm Work: Effluent Pond Design & Build, Dams, Races *
* House Sites * Driveway Prep * Lawns * Roding *

P. 09 432-7877 M. 027-432-7877
E. karl@hansende.co.nz




SMALL BLOCK MULCHING

Phone COLIN (Joe) 0274916983

PLASTAWORKZ
INTERIOR PLASTERING
Specialising in renovation,
alterations, small jobs & repair work

GLEN
021 223 2003
plastaworkzwhangarei@gmail.com
www.facebook.com/plastaworkz

LAWSON
CARTAGE

FOR ALL YOUR
EARTHWORKS & CARTAGE NEEDS
Suppliers of: topsoil, compost, woodchip,
bark, sand, pebble, rocks and firewood.

Ph/Fax 09 432 8418 or 021 768 940
458 Marsden Point Rd. PO Box 142, Ruakaka 0151
email: lawsoncartage@xtra.co.nz

GREG STEWART
Qualified Builder...License # 106626



Over 45 years experience
Prompt Service
Ph 021 317 555
Email gpstewart56@gmail.com

SMALL ALTERATIONS..
DECKING..FENCING
BUILDING REPAIRS..HANDYMAN

NO JOB TOO SMALL GIVE ME A CALL

STORAGE
BREAM BAY

76 Waiwarawara Dr, Ruakaka 0171

Karen Loft
Business Manager
Mob: 021 432 701

Office Hours 9.00 - 1.00
email: storagebreambay@gmail.com
www.storagebreambay.co.nz

LOW COST DRIVEWAYS & SURFACING NEEDS
Concrete or asphalt beyond your budget ...
We have the next best solution for a
fraction of the price.
Call for a quote, you'll be pleased you did!
Paradise Quarry Contractors
Geoff (021) 972 139 or (09) 432 2722
For contractors who 'think' ...

YOUR MONEY BLUEPRINT

WAIPU BASED FINANCIAL PLANNER

- Investment planning
- Retirement planning
- General financial planning

Name - Nick Carr
Phone - 022 504 7612
Email - ncarr@yourmoneyblueprint.co.nz
Website - www.yourmoneyblueprint.co.nz

MPP
MARSDEN
PANEL & PAINT

Panelbeating and Spraypainting
Caravan and Motorhome Repairs
Tyres New and Secondhand
Punctures

470 Marsden Point Rd, Ruakaka
Call 09 4330313 24 Hrs or Bert 021 983 724

M.V.B. Electrical Ltd.
Working in Bream Bay since 1977
Repairs • Installations • Advice
Mike van Blommestein
Phone: 09 432 1015 • Mobile: 0274 783 749
Email: mikevanb@xtra.co.nz



BARFOOT THOMPSON &
I Love Selling Bream Bay!

Angelique Hartnett
Coastal & Lifestyle Sales / AREINZ
0274 356 411 / 09 435 5914 P
a.hartnett@barfoot.co.nz E

GRAEME BINT
FENCING

GOOD RATES, NO JOB TOO SMALL
09 432-1599 or
027-292-2833
grbint@xtra.co.nz

MANGAWHAI SMALL ENGINES
Grasshopper, Husqvarna and Honda dealer




194 Molesworth Drive, Mangawhai
Ph: 09 431 5270 or Mb: 021 655 481
Email: msengines@xtra.co.nz

Bream Bay Tax

Tax Accounting Business support
Free first consult.
Fixed price packages
Supporting Bream Bay businesses

Robb MacKinlay 027 540 7859
robb@breambaytax.nz www.breambaytax.nz

BREAM BAY HYDRAULICS

Bream Bay's first local
hydraulic hose service

RYCO **TOTAL LUBRICANTS**

021 308 358 breambayengineering@gmail.com

FOR SALE

STOCK FEED FOR SALE Top quality standing silage or hay or conventional hay bales behind baler
Phone Ritchie Guy 0274 320 351

WILTSHIRE SHEEP
Ideal lifestyle block sheep
Self Shedding
Ph 027 432 1016

**WORMS
FOR SALE**
For worm farms
Phone or text
027 432 0070

**RAWLEIGH'S
PRODUCTS**
Independent dealer.
Ointments
back in stock.
Phone Susan McRae
027 227 2291.

**WATER
TANKS**
09 431 2211
sales@absolute
concrete.co.nz

3mm ACM Snowbond
caravan/trailer/wet area
lining \$82.80
Scooters plywood
Ph 09 4386565

FOR HIRE

SHIPPING CONTAINERS
20ft Shipping Containers, hire offsite \$180 per month + GST + Del, minimum 3 months,
Ph 0212722739 / 021432701

**MARSDEN YACHT & BOAT CLUB
CLUBHOUSE FOR HIRE**
Available to Community Groups for regular hire, weekdays and evenings
Fees only \$30.00 for half day sessions
Also suitable for Corporate Hire, Conferences, etc. T's and C's apply
Good facilities.
Enquiries to K. Walker, Ph. 4327422



HERITAGE SCHOOL for Hire
Available to Community Groups for regular hire, weekdays and evenings.
Suitable for Conferences, Corporate hire

\$20.00 per hour, or \$100.00 per day

Good facilities with parking & outside space
Terms and Conditions apply

Enquiries to J Craymer, Ph 021169 339

**Local people read
THE BREAM BAY NEWS**
**It is an effective place
to advertise**

SOCIAL SERVICES**Safeman Safe family
Men's Centre**

Safeman Safefamily offers a safe place for men to talk privately without judgement and with complete confidentiality.

We are peer led and professionally supported and offer a range of services and support for men and their families.

The services we provide are as follows:

- Advocacy Navigator
- Court support
- FGC Support
- Probation Community Service Provider
- Legal Advice
- Marriage Celebrant
- House and property blessing
- One to one counselling
- Drug and Alcohol support
- Anger management group sessions
- Supervisor for court ordered access
- Work brokers/ help with employment opportunities.

No appointments are necessary, we have an open door police - if you need help or know someone that does just come on down to: **9 Takutai Place, Ruakākā**. We are right next door to Jimmy's Barber Shop or I can be reached by phone 021 121 0763 - Phil Paieka

**Bream Bay Community
Support Trust**

Takutai Place, Ruakaka Phone: 09 432 7197



Services we provide:

- Registered Social Workers
- Family Support Workers
- Youth Workers
- Youth Holiday Programme
- Counsellors
- Community Connectors (Connecting community to various services)
- Free Whanau Ora Medical Clinic with Ki A Ora Ngatiwai. Wednesday mornings 10am-12noon, by appointment only phone 09 435 4586
- Free Budgeting Service - fortnightly on Thursdays 10am-1pm, by appointment
- Mana Wahine Ki Wahine Toa & Ha Tane groups
- Community Gardens behind our main building please help yourself
- Pataka Kai/ Food Pantry located outside our reception door.

Follow us on social media - Facebook and Instagram for updates on what is happening here during the week.

www.bbtrust.org.nz



**LINKING HANDS
Health Shuttle**

Phone
(09) 431 8969

**BREAM BAY
ANGLICAN
FOODBANK**

If you would like assistance or know someone that does, perhaps we can help
Please phone Liz
022 582 5734?

SOCIAL SERVICES**Not sure? Ask us!**

We provide free, confidential and independent information and advice to help you understand your rights and responsibilities.

Contact us for assistance.
09 438 8046 • whangarei@cab.org.nz

www.cab.org.nz

SERVICES OFFERED**QUALITY PAINTER**

Residential and Commercial
Interior and Exterior, Decks.

Paint, stain, oil
Ph. Tony 021 196 2949

**Waipu Boarding
Cattery**

Excellent care and accommodation
Ph Sue 432 0394

**NORTH LAND
HEADSTONES**

Located in One Tree Point
Your Local Headstone Showroom
Call 0800 707 800
www.northlandheadstones.co.nz

Cut it! Chip it! Grind it!

Tree Removal

- ✓ Pruning
- ✓ Chipping
- ✓ Stump grinding

Qualified & Insured
Ph Scott (0800) 468-9663
**Arborcare
Tree Maintenance**

GLENMOHR water care

WATER TANK CLEANING

No need to empty your tank

- Vacuum or full scrub

Phone Mark Draper
0274 707 607

JD LAWN CARE SERVICES

Lawn mowing, Weed spraying,
Water blasting, surface cleaning of driveways, paths and patios, Hedge trimming, Section clearing, tree pruning, wood chipping and more.
PH. 021 063 7907

THE NEXT PUBLICATION DATE

of the Bream Bay News will be Thursday 30 January
The deadline for all copy is 4pm on
Wednesday 22 January

EMPLOYMENT OPPORTUNITIES

FARM WORK (Part time)

One day per week on cattle/ horse farm.
Lungs Beach. \$55 per hour ;self employed.
Your details/ experience please to:-
aaron.pr@xtra.co.nz

PUBLIC NOTICES

Northpower

An important notice Road closure for power works

Northpower wishes to advise that a small section of **South Road, Waipu** between Glenmohr Road and McLean Road will be **CLOSED** on **Friday 24 January 2025**, from **7:00am to 4:00pm**.
Road users should follow the sign posted detours whilst the closure is in operation and expect delays.
Northpower apologises for any inconvenience cause while we carry out this necessary network maintenance.
If you have any concerns, please phone **Northpower on 0800 10 40 40**.

General enquiries: 0800 66 78 47 northpower.com



Justices of the Peace

Ruakākā

Paea Paki 021 149 1625
Darrell Trigg 09 432 7256/021 332 901
Ken Orr 09 432 8215
Wayne Buckland 022 644 5376.

One Tree Point

Jules Flight 0274 777 210
Sir John Goulter 021 612 442
MM Jolley 027 415 9486
Ian Bogue 0274 300 418
Grant Brown 027 248 7126
Sharon Carroll 0272653227

Waipu

Trevor Vaile 021335 075
Doug Scott 027 229 9752
Ken Couper 027 292 0524
Angela Stolverk 021 823 966
Chris Martin 027 367 2947
Mary Abercrombie 021 598467

Make contact with a Justice of the Peace (on any day) and make an appointment to have your documents completed.
A service desk also operates 10am to 11am on Saturdays in the Ruakākā Library.

PUBLIC NOTICES



Bream Bay Medical Centre Ltd.
Ruakākā Town Centre, Ruakākā

Monday - Friday: 8.45 am - 5pm
Saturdays: 9am - 12pm

Marsden Cove Medical Centre
1A Ngawaka Lane, One Tree Point

Monday - Friday: 8.45am - 5pm

Please advise at time of booking
if you require an extended consultation

New patients welcome

Ph: 432 8060

KW SINGERS PRACTISE

At Ranburn Care Home.
Tuesdays 1.15 - 2.45.
an unauditioned community choir with a vacancy for a tenor, a bass and a first soprano.
Also an accompanist
Anne Connolly - Munt
0274847576

**Local people read
THE BREAM BAY NEWS
It is an effective place
to advertise**

NORTHPINE COMMUNITY LIAISON COMMITTEE

This committee meets periodically to review the environmental performance of the Northpine timber manufacturing plant in Waipu, in consultation with representatives of the local councils. Any Waipu resident with concerns about the environmental effects of the Northpine plant should notify the Northpine office (432 1155). Concerns will be recorded, considered and subsequently reviewed by the liaison committee. The Independent chairperson of the liaison committee is Steve Goldthorpe 0274 849 764.

MARKETS

O.T.P ARTISAN MARKET

Fundraiser for Whangarei Hospital
Children's Ward
Third Sunday every month
97 One Tree Point Road
Spaces Available Phone 021 530 153

WANTED

OLD NEWSPAPER Copies of the Bream Bay News, Advocate, Herald, Leader, Weekend Lifestyler, or Mangawhai Focus for recycling as erosion control. Waipu Lions fundraiser. Phone Dave Bell 09 432 0861.

CLASSIFIED ADVERTISING

Costs \$5.50 for up to 20 words and 20c for each additional word.

Boxed, classified adverts cost \$16.50 gst .inc.
Phone your advert through to 027452 0070
email it to breambaynews@xtra.co.nz

Post it to: Bream Bay News, RD 2 Waipu 0582
or leave it with payment at: The Waipu Post Shop
or the Ruakākā Gift and Lotto Shop



Need help with your computer,
Tablet, Smart Phone, Digital Camera?

Training designed for those over 50!

Come to our Open Day

Discuss your needs with our tutors
so you can keep up with technology

When: Tuesday 21st January 2025
10am – 12noon

Where: 7 Kapa Road, Ruakaka

SENIORNET BREAM BAY

Phone enquires: - 4327 692

(Please leave a message)

BREAM BAY SUNDAY CHURCH SERVICES

Presbyterian Camellia Ave, Ruakaka:
8.45am. The Centre, Waipu: 10.15am.
Prayer Service: 7pm

Encounter 223 Marsden Pt. Rd,
Ruakaka, 10am.

Anglican - ST PAUL's Church, 25 Karawai St, Ruakaka 1st and 3rd Sundays
9.30am

ST. PETER'S CHURCH, 8 Nova Scotia Dr., Waipu 2nd and 4th Sundays,
09.30am

Catholic Holy Family Church,
Ruakaka, 10.30am. Mass or Liturgy of the Word

Lifepoint. 300 OTP Rd, 10.30am.

THE NEXT PUBLICATION DATE

of the Bream Bay News will be Thursday 30 January
The deadline for all copy is 4pm on
Wednesday 22 January

Frazerhurst[®]

Curtains | Blinds | Awnings | Screens

40 years in
Whangārei



Come and talk to us about your window furnishing requirements

- Free measure and quotes
- Free loan sample service
- Whangārei Showroom
- Satisfaction guaranteed

Weathermaster

Blinds | Awnings | Shutters | Umbrellas

146 Lower Dent St.
Whangārei
Ph: 09 438 3986
www.frazerhurst.co.nz



Harcourts Waipu

Paradise on Waipu River Front WAI2696
Deadline Sale (unless sold prior)
Closes Wednesday 5th February at 4pm



- Immaculately presented 4-bedroom and 2-bathroom home
- 1303m2 site is attractive and established
- Stunning rural and water views
- Bountiful birdlife - lovely to watch
- Launch the kayak and paddle board from the lawn; explore the surrounding beauty
- Gorgeous kitchen with granite bench and butlers' pantry - hub of home
- Additional lounge - great media room
- Alfresco dining options - fabulous indoor and outdoor flow
- Double garage is internally accessed with attic ladder for ample storage
- Easy walk to Waipu township
- Viewing highly recommended

OPEN HOME: 4 Breton Drive, Waipu
Saturday & Sunday 1.00 - 1.45 pm

Roger King 0277 555 001



Lifestyle Property on Helmsdale WAI2673
\$829,000

- All offers invited and considered!
- Absolute peace and privacy
- Competitively priced under current CV
- 3-bedroom home on 4.8174 hectares
- Master bedroom with convenient ensuite
- Beautiful rural and country outlook
- Separate double garage for storage
- 15-minute drive from Waipu village

Lyndie Mullins 021 011 6389

Harcourts Waipu | 7 The Centre, Waipu | 09 432 4000
Waipu Real Estate Ltd Licensed Agent REAA 2008

Harcourts Waipu



BBR

BREAM BAY REALTY

BREAM BAY REALTY LIMITED (LICENSED: REAA 2008)

Shop 11 | Town Centre | Ruakaka 0116 | NZ
PH: 09 433-0300 | bbrealty.co.nz
info@bbrealty.co.nz

Proud sponsors
SPCA
WHANGAREI

New Listing!



SITTING PRETTY ON SALLE

- Three double bedrooms.
 - Aircon, HRV, flyscreens.
 - Garage with workshop.
 - Full size 804m2 section.
 - Dog proof fencing.
 - Located walking distance to shops.
- Price \$729,000 | bbrealty.co.nz #4214
JOANNE DEWSON AREINZ
Mob: 021 780 622



IMAGINE

- Absolute waterfront.
 - Stand-alone unit.
 - Cottage of 62m2.
 - Two bedrooms | One bathroom.
 - Residents Only Beach Access.
- Expressions of Interest over \$900,000
bbrealty.co.nz #4183
JANINE GOLDSMITH AREINZ
Mob: 021 432 793



VENDOR SAYS SELL!

Swim and kayak your life away - this location is next to none! Tow your boat 5mins to the Marsden Cove ramp. A level pleasant walk down to the Marina amenities. A great lock up and leave amongst sought after properties in a quiet, established cul-de-sac.
Price \$925,000 | bbrealty.co.nz #4201
FRANCIE STOKES
Mob: 022 656 0165



FAMILY HOME AT THE PARK

A sun-soaked haven, this beloved home exudes warmth and comfort. Inside, discover 3 bedrooms with a large open-plan kitchen/dining/lounge - perfect for gatherings or quiet evenings - all in immaculate condition. The property backs onto a lovely park for the kids or grandkids, complete with playground and tennis court.
Price \$849,000 | bbrealty.co.nz #4195
FIONA SOUTHERN MNZM
Mob: 021 317 775



Happy New Year

From all of us here at Bream Bay Realty Ltd, we would like to wish our clients and customers past and present, a Happy and Safe New Year.

We will be available across the entire holiday period.
Please ring the office on 09 433 0300 for assistance.