

Bream Bay News

Established 1967. Delivered FREE twice monthly

Phone 432 0209. email breambaynews@xtra.co.nz

Mobile 027432 0070 Postal address - RD 2, Waipu 0582

Website: www.breambaynews.co.nz LOCALLY OWNED AND OPERATED

19 December 2019

Affordable Quality

- * SECURITY DOORS
 - * INSECT SCREENS
 - * SHOWER DOORS
 - * BLINDS
 - * AWNINGS
 - * WARDROBE SYSTEMS
- Regular Bream Bay Service



PH: 438 9452

34 Albert St Whangarei
Div. Shadelite Industry

DOC to get tough on vehicles in dunes

The Department of Conservation is about to get tough on vehicles driving in the dunes between Tip Rd. and the Waipu Estuary.

Over the summer DOC staff will work with representatives of Patuharakeke, and a security firm to educate beach goers about the importance and fragility of the dune system and to enforce rules around driving vehicles and riding bikes in the dunes.

Fiona Watson, a Senior Ranger with the department's Whangarei branch, said Operation Spinifex will be launched with a media campaign before the on-site advocacy and compliance sessions begin in mid-January. These will continue on random days throughout the peak summer period and then, at a lesser frequency, over the rest of the year.

Patuharakeke and security firm representatives will be based in the Tip Road car park handing out leaflets and generally taking an educational approach as people turn up, while DOC staff will be patrolling the dunes. Fiona advises that, while first time offenders, will be sent warning letters, they will take firmer measures on reoffenders, taking prosecutions when this is appropriate. The programme will be assessed after the first three months of its operation but the intention is that it continues for five years.

Despite bylaws specifically prohibiting vehicles driving into Bream Bay's dunes the area north of the Waipu estuary has become a popular destination for trail bike riders who post videos of themselves riding here on social media sites. On summer weekends, the whine of bike motors can be heard for many kilometres along the beach and several large sand bowls completely devoid of dune vegetation are visible on Google maps and there are multiple bike tracks through the back dunes.

Santa's little mini a big hit



Photo by Geoff Spencer

There was no shortage of big trucks in the Ruakaka Christmas Parade but this cute little mini had the privilege of towing the man all the children were waiting for. Santa on the Marsden Lions float Marsden brought up the rear behind a collection of colourful entries from local schools, preschools, businesses and community groups. The parade started and finished on the Ruakaka village green and made its way through Takutai Palce and along Peter Snell Rd on Saturday morning 14 December.

Gladys Rowsell of the Marsden Lions, said Santa and his mini was a hit and a *funny money* scheme where vouchers were handed out to spend at local shops was well received by both retailers and customers as were all the activities in the town square after the parade.

"All in all we are very pleased with how the day went", Gladys said.

One Tree Point School won the prize for the best float, the Pulse Dance entry was second and Marsden Playcentre's third. The Ruakaka Surf Lifesaving Club float was Highly commended.



Langs Beach 23 Seacrest Boulevard

2 1 1

For Sale \$960,000

View by appointment

Christine Birss 027 235 4323 christine.birss@bayleys.co.nz

MACKYS REAL ESTATE LTD, BAYLEYS, LICENSED UNDER THE REA ACT 2008

Classic kiwiana family bach

A very kiwiana bach larger than it first appears offers a great retreat at a fabulous location.

With 2 bedrooms (1 of which has bunks plus extra bed) plus open plan living, you should be able to accommodate a couple of friends. A large carport at rear of the house plus off-street parking, so you have room for the boat or friends to park.

Hard to find a kiwiana bach for under \$1,000,000 within walking distance of the sand of Langs

bayleys.co.nz/1151712

BAYLEYS

This Issue

- Pages 4, 6 & 8... Letters
- Page 5 ..Twilight market success despite the rain
- Page 10....Police Report. .
- Page 11..Two new AEDs for One Tree Point.
- Page 14 ..Waipu Primary School production takes us to Lazy Dazy Village.
- Page 15 ..Durham Farms a polyface, organic farming operation.
- Page 16...Tides .
- Page 17..Marsden Lions Junior Citizenship Awards
- Page 18... Women's heavyweight competition at the 2020 Waipu Highland games
- Page 20 .. What's On
- Pages 20, 21 & 22 ... Trades and Services
- Pages 23 & 24 ..Classified advertising.

THE BREAM BAY NEWS

is published by Bream Bay News Ltd.
Address : RD 2, Waipu
Phone : (09) 432 0209
Mobile : 027 432 0070
Editor : Marilyn Cox
Accounts : Susan McRae
Advertising design :and website maintenance Megan Lea
Printed by Horton Media

EDITORIAL

Mixed feelings about the cancellation of Kainga ora housing project

I have mixed feelings about the cancellation of the Kainga Ora housing project in Ruakaka. I think 31 families in transition would have placed a big strain on our community, including our schools, the medical centres and the police. But more safe homes for vulnerable people are desperately needed. I heard of two very sad situations last week. These were told to me by relatives who live elsewhere in New Zealand so the people I am talking about aren't locals but I know similar situations exist here as they do throughout New Zealand. The first involves an elderly lady who has decided to sell her beloved home and garden and to move into a retirement village because she can no longer cope with all the problems her drug addicted daughter brings to her doorstep. She is moving to a place where there are rules preventing family members and their large dogs moving in with you. After many decades of sorting out the multiple crises this daughter brings to her: neglected children, unpaid rent, unpaid power bills, unpaid traffic fines, medical emergencies etc. this woman, now approaching 90 years, is wondering if she is being selfish. The second sad story involves a young man who was recently deported from Australia where he has lived since a child. He has no family in New Zealand, his methamphetamine addiction was never addressed and he is back behind bars. He doesn't need to be in prison

as his crimes are to do with possession of the drug and not supplying others but there is absolutely nowhere else for him to go. Both these individuals, the young deportee from Australia and woman whose mother has decided to sell her home would benefit from living in supported housing such as Kainga Ora was proposing for Ruakaka. In fact, we would all benefit if they were both safely housed and supported somewhere. Imagine the weight that would be lifted from that dear old lady's shoulders in knowing that her troublesome daughter was being looked after. It costs \$91,000 to keep someone in prison for a year. If people who suffer addictions can be successfully rehabilitated there are long term benefits for our health and justice systems. But the biggest benefit of all must be to the wellbeing of all those involved. It is so tragic that lives, including the lives of family members should be blighted by this plague. Having somewhere safe and secure to live must be fundamental before recovery can begin. So I hope Kainga Ora can find a good spot to build some supported housing for Northland.. Understandably no-one wants these homes to be in their neighbourhood and, judging by the Ruakaka Village experience, even with the political will and funding in place, its not going to be easy.

Marilyn



Waipu 21 Riverview Place

3 1 3 2 3

For Sale
Jan Anderson Halliday 021 380 032 jan.anderson@bayleys.co.nz
MACKYS REAL ESTATE LTD, BAYLEYS, LICENSED UNDER THE REA ACT 2008

SOLD by Jan

Congratulations to the new owners of this awesome home, please make them welcome. I know they are going to enjoy relaxing on the decks taking in the activity on the river and ocean and this is well-deserved. An enormous thank you for my fabulous vendors. We have worked together on several occasions now and it is a real pleasure to work alongside such fun, hardworking folk. They were always ready to listen and implement new ways of presenting and marketing their property. Thank you for making this such and enjoyable process and all the very best with your future plans.

bayleys.co.nz/1060052



One Tree Point 27 Bermuda Place

3 1 2 2

Asking Price \$695,000
Melva Hartnell 027 499 8463 melva.hartnell@bayleys.co.nz
MACKYS REAL ESTATE LTD, BAYLEYS, LICENSED UNDER THE REA ACT 2008

Another one sold by Melva!

Congratulations to the new owners of this lovely home, please make them welcome in our friendly neighbourhood. Thank you to my vendors for your trust. I have several qualified buyers who have missed out so if you are thinking of selling please give me a call to arrange a confidential chat about the best way forward for you. Appraisals are free and a great way to find out just where your property sits in this market. Experience, knowledge, integrity and empathy cost no more but make all the difference.

Local agent - proven results!
bayleys.co.nz/1060060



Kāinga Ora still committed to building transitional housing for Northland

In case anyone in Bream Bay hasn't heard yet, the proposal to build 31 transitional houses on Te One Street in the Ruakaka Village has been canned.

The Bream Bay News received a media advisory email from Quentin Bright a communications manager for the government housing agency Kāinga Ora on 6 December which stated, the agency "has had useful conversations with a range of stakeholders in the region and among the relevant government agencies around Ruakaka as a location for transitional housing. After these discussions, we have decided we will not be proceeding at this time with a development on this site."

He said that a planned meeting where Kāinga Ora staff had intended to meet with the community in Ruakaka on the evening of 9 December would therefore not be going ahead.

Asked by the Bream Bay News if it were possible to get more specific information as to why the Te One park land is not suitable for transitional housing and who the stakeholders the discussions held with were, Mr. Bright replied, "Sorry, there is nothing further we can add."

He said, "Kāinga Ora remains committed to delivering more public housing, including transitional housing, to meet urgent demand in the region. We are continuing to explore other options in Whangarei and Northland. Once these are identified, we're committed to engaging with communities about these opportunities."

Ruakaka Structure Plan resurfaces with talk of port and navy relocations

An agenda item was due to go before the Whangarei District Council on Thursday 19 December, recommending that Council staff continue to work with government officials to help facilitate the move of both Ports of Auckland and the New Zealand naval base to Marsden Point.

The report says the Council has been advocating for both these relocations for a number of years and has already undertaken some of the strategic planning needed.

It references the Marsden Point/Ruakaka Structure Plan of 2009 which sets out long term capacity for the development of a city of 34,000 people in Ruakaka, along with approximately 800ha of industrial land and 200ha of commercial land.

More parade pictures



Lots of bubbles floated out from the Marsden Playcentre float.



The Pulse Dance Studio went for a colourful Pacific Island theme.



MERRY CHRISTMAS

AND

Happy New Year!



Melva Hartnell
027 499 8463
melvahartnell@bayleys.co.nz

Jan Anderson Halliday
021 380 032
jananderson@bayleys.co.nz

MACKYS REAL ESTATE LTD, BAYLEYS,
LICENSED UNDER THE REA ACT 2008

Wishing everyone a fantastic holiday season from the Bayleys Bream Bay team.

We're open throughout the holidays (excluding stat days) for all your real estate needs.

Unichem Orrs Pharmacy



Unichem Orrs Pharmacy Ruakaka
Town Centre, Ruakaka
Ph: (09) 432 7756



Understanding how to be Sun Smart



Become Sun Smart

New Zealand has some of the strongest levels of UV radiation in the world. Making the right choice regarding sun care is important for you and your family's health. Your Pharmacist can provide you with the right care + advice to help you be sun smart with your everyday sun care choices.

What is SPF?

SPF stands for Sun Protection Factor. It gives an indication of how much protection a sunscreen has against the burning rays of the sun. If used correctly the higher the number, the greater your protection.

What are UVA and UVB rays?

UVA rays are responsible for wrinkles and premature aging as they penetrate deep into the skin. UVB rays penetrate the skin's top layer causing sunburn. Both can cause skin damage.

What is a broad-spectrum sunscreen?

A sunscreen product that shields against both UVA and UVB rays.

Sun Smart facts*

- A SPF 50+ is recommended for use.
- Car windows do not block UVB rays (unless they are tinted). You need to wear sunscreen everyday even when driving.
- A hat only protects you from 50% of the sun's rays. Apply sunscreen to your face as well for better sun protection.
- Remember if you are tramping or skiing at high altitude it is important to ensure adequate sun protection all year round.

Getting the most from your sunscreen

Most of us aren't benefiting from the full SPF value of sunscreens. We either apply too little, too late, or don't reapply it often enough.

The Teaspoon Rule

To make sure you have enough sunscreen cover, use the teaspoon rule. Assuming your torso is covered up, you'll need a teaspoon for each of your arms and face, and two teaspoonfuls for both your legs. On an average adult body, that's at least 7 teaspoons (approximately 35ml). If you are wearing swim wear, you'll need even more!

Timing

To be fully protected by your sunscreen, you need to apply it 15 - 20 minutes before going out into the sun.

Re-apply

Re-apply sunscreens at least every two hours. Water resistant sunscreens may be removed by towel drying or sweating so re-apply after getting out of the water.

Cover up

Remember to cover up as well. Hats, shirts and sunglasses all help to increase your sun protection. And seek shade, especially between 10am and 4pm.

Tips for treating sunburn

It is best to prevent sunburn with good sun care protection but if you do get burnt:

- **Act quickly.** As soon as you see a touch of pink or feel any tingling of a burn on yourself or a child, get out of the sun and start treatment.
- **Cool down.** Apply a cold compress or immerse the affected area in cool water.
- **Moisturize.** Gently apply a cream or lotion to soothe the skin.
- **Hydrate.** Drink water, juice or sports drinks with electrolytes to replace body fluids.
- **Shade.** Stay out of the sun until the burn fades.
- **Get expert advice.** Talk to your Pharmacist if the blisters break, you are in severe pain or discomfort or the sunburn is accompanied by chills, fever, nausea or vomiting.
- **Be smart and get checked.** If you are concerned about a mole or funny looking skin spot get it checked by a Doctor straight away.



More information about being
Sun Smart is available from:

Sun Smart NZ:
www.sunsmart.org.nz



From the team at Orrs Unichem Pharmacy
Ruakaka, we wish everyone a
Merry Christmas and a happy
and safe New Year.

LETTERS

How does moving the the port 100km away from our largest population centre stack up environmentally?

I studied the report "Economic Analysis of Upper North Island Supply Chain Scenarios" (9 August 2019), produced by the Upper North Island Supply Chain Strategy Working Group, which is chaired by Wayne Brown. While greenhouse gas emissions are described as a focus and an objective for the multi-criteria analysis, and an element of the cost and benefit measurement and modelling, they are mentioned only twice and very briefly in scenario 2.1 (Northport, Full Move: "GHG emissions are decreased by diverting road freight from Northland to Auckland roads onto rail"), and scenario 2.4 (New super port in Firth of Thames: "... the travel distance from SH1 to the ports landside activities increases emissions from heavy vehicle travel"). Greenhouse gas emissions, together in a group with other environmental criteria, like pollution and biodiversity, are weighted at only 20% in the multi-criteria analysis, while economic criteria and social and cultural criteria together are both weighted at 40%.

Both Whangarei District Council and Auckland Council have declared a climate emergency. It is very disappointing to see how little consideration is given to this in the UNISC report, and it makes the working group look indifferent, if not incompetent. While the economic benefits are discussed and costed in detail, there is no costing or weighting of environmental benefits, let alone greenhouse gas emissions, aside from the aforementioned two very general statements. It is also unclear why the Northport scenario would decrease emissions and the Firth of Thames scenario would increase emissions when both scenarios remove the port from our largest population centre and therefore require additional freight transport back to Auckland. The report also ignores the rapid development in electrified and autonomous road freight transport that will disrupt the transport industry well within the time-frame that it will take to build and upgrade the required rail infrastructure.

We have to look at the proposed full move to Northport again, this time through the climate emergency lens, and explain how moving the port over 100km away from our largest population centre stacks up not just economically and culturally, but first and foremost environmentally, while also considering the disruptive changes in road and rail transport as well as coastal shipping over the next decade. Then we can have an informed debate about what makes sense to move where, when and how. Until then, we shouldn't allow politicians and vested interests to bully us out of the room if we disagreed, or put pressure on us to support an incomplete proposal that seems to have a lot of the characteristics of pushing a pet project, rather than well-researched and fully-costed scenarios in our current context of a climate emergency.

Olli Krollmann

One Tree Point

Food for thought

As I glanced at the latest edition of the breambay news I saw the article on The new supermarket in Ruakaka.

As I read the article my heart was a flutter with the excitement of and bigger and better supermarket, Perhaps even a Pack'n Save. But as I continue to read down I realise that the supermarket in question is just another fresh choice.

My reason for my disappointment about the new fresh choice is the pricing structure remains the same. I don't know whether it is me or not but I am pretty sure that items at FreshChoice are at least a dollar to \$2.50 more expensive than the supermarkets in Whangarei. A long time ago I asked the manager at Freshchoice for the reason why the prices were more expensive than the supermarkets in Whangarei and they replied it was due to the trucking and that's why the additional cost. I was puzzled. The last time I checked Whangarei was at least 30 k's further than Ruakaka so therefore should be as cheap or cheaper than the large supermarkets in Whangarei.

My question is FreshChoice Countdowns evil twin sister taking advantage of poor people and people living in a rural situation.

Food for thought.

Yvette King

Waipu

LETTERS TO THE EDITOR ARE VERY WELCOME

Email them to: breambaynews@xtra.co.nz, Drop them off at the Waipu or Ruakaka Lotto shops Or post them to: The Bream Bay News,

547 Mountfield Rd., RD2 Waipu, Postcode 0582

Twilight market success despite the rain



Bradley Stewart on the left, Bella Williams and Ryan Morgan all of One Tree Point Primary are delighted when teacher Donna Riley gets a dunking under the Mega Splash sideshow at the schools Twilight Christmas Market.

There had been no rain to speak of for over a fortnight but the evening of the One Tree Point Primary School’s fundraising Twilight Market on Friday 6 December there was thunder, lightning and torrential downpours. Corinne Haile one of the organisers who had been working towards this event for months put a brave face on it.

She said, “Even with the bad weather, the night was a success and we will definitely be doing it again next year.

Asked how much money was raised Corinne said, “Our profit is sitting at \$3,165 and we are still selling the kids artwork etc, so do expect a little bit more to come in”.

While Santa sat all alone in his sleigh shaped tent and customers for the stalls set up on the school playing fields may have been a bit thin on the ground the performances inside the school hall, where it was nice and dry dry, drew a good sized audience.

Right: Michelle Dhillon, her son Harper Dhillon in the pushchair, and Michelle’s mum Lesley Eley braved the weather to attend the OTP School Twilight Market .



Curtains & Blinds with class

- Mobile “in-your-home” service
- Genuine pensioner & house lot discounts
- Hundreds of samples
- 25 years in interior design

FREE CURTAIN MAKING (OVER \$30/m)
UP TO 60% OFF BLINDS




FOR A FREE MEASURE & QUOTE
PHONE LESLEY
09 432 7140

Bream Bay’s only curtain and blind supplier
WINDOW DECOR LTD
Servicing Bream Bay & Mangawhai

THE NEXT PUBLICATION DATE


of the Bream Bay News will be Thursday 16 January
The deadline for all copy is 4pm on
Wednesday 8 January



Camp Waipu Cove

Our multi purpose sports surface is free for use by locals for tennis, basketball or soccer
Bookings essential ph 09 432 0410 or make a booking at our office.

Phone 432 0410
869 Cove Rd., Waipu
www.campwaipucove.com






RayWhite

342 Cove Road, Waipu


Just Listed!

Away from the maddening crowds, this funky property on the coast serves up a bounty of fun! With separate sleepout, it provides the ideal environment for extended family and friends to gather with plenty of room for the boat, camper and tents! But what’s the secret? You can spy it from the deck! The coast!

Walk to the end of the no-exit road opposite and you are greeted by the clean shallow estuary, the ideal place for little ones to learn water safety. It’s a great place to throw in the inflatable dinghy, launch the stand-up paddle board, kayak and collect cockles. Call Malcolm or James now to view.



Malcolm Norton
021 783 533
malcolm.norton@raywhite.com



James Alexander
021 878 178
james.alexander@raywhite.com

Licencee Salespersons
The Real Estate Shop Limited Licensed (REAA 2008)

rwbreambay.co.nz



The Turning Point



**New Kitchens
designed and
installed
to the client's needs**

**Alterations, renovations,
kitchen upgrades,
furniture repairs, deck building and repairs**

**Specialising in quality • 30 years experience
Trade certified joiner**

Phone Steve King 09 432 1784 or 021 468 288



99 MARSDEN PT ROAD, RUAKAKA

92 Units from 6 x 3 to 1 x 1

Each unit individually alarmed and monitored

Electrified security fence

Ph. 0508 273 262 or 0275 310 788

CLEAN - DRY - SECURE



INSIDE/OUTSIDE storage at 50 Cove Rd., Waipu

Free phone. 0800 432 135

enquiry@breambaystorage.co.nz

www.breambaystorage.co.nz

THE NEXT PUBLICATION DATE

of the Bream Bay News will be Thursday 16 January

The deadline for all copy is 4pm on

Wednesday 8 January

LETTERS

Good values don't need any particular religious faith

I was disappointed but not surprised at the letters Bream Bay News has received about the removal of religious instruction at Waipu Primary.

Julie Malone talked about how "Life Choices" is a values based programme teaching love and kindness. Unfortunately, this love and kindness doesn't extend to the parents of children who were forced to leave their own classrooms to avoid evangelism in their secular state school.

Carol Geddes wrote about how it was a "privilege" to teach Bible classes at the school. She's right. It was privileged access for one religious group in a school that was supposed to be welcoming to children from all religious backgrounds. No group of any religious view should have a privileged position in the school. She also talked about respect for other people. I have to wonder how trying to promote your personal religious views in a primary school shows respect for parents who choose not to follow her particular religion? Martin Geddes manages to insult all non-Christians by suggesting that without "Judeo Christian" values

people "lack self worth" and the Waipu community may become dysfunctional. I think that parents and teachers are capable of teaching children good values without the need for any particular religious faith.

Teachers are required to teach values as part of the Ministry of Education curriculum. Are Julie, Carol and Martin suggesting that teachers are not doing their jobs properly? I think they are. I suspect that the real cause for concern is that they aren't getting their preferred religious beliefs promoted in the school any longer. Imagine how much children will benefit from the extra 20 hours a year teaching time that has been recovered by removing religious instruction.

To the supporters of Bible in Schools, I think that when you are accustomed to "privilege", equality can feel like oppression. But your churches are still there and available to anyone who wants to visit. That should be enough.

*Dave Smyth
Whangarei*

Why do we need to lean on Christianity?

In reply to the issue that the Life Choices programme is being discontinued at Waipu Primary School, it has me wondering why in the 21stC we need to lean on Christianity. If help is needed why Christianity? Where is the belief in ourselves? Where is Buddhism? Where is meditation?

We live in an endless world of information and it was interesting to read the letters - none of them spoke of the environment.

It is absolutely possible to have integrated into the school programme all those attributes spoken of by Carolee. Those attributes are much discussed by many schools right now alongside the environment. But why take away the individual responsibility of each person to see that they are carried out?

One of the favourite chants in my class of 5-7yr olds was: "My responsibility is Me, Me, Me! Not my fathers, not my mothers. Not my sisters, not my brothers. My responsibility is Me, Me, Me!" The times we used it: to self appraise a classroom disruption, for the class to offer solutions, and, for all of us to look sadly at what was the result of the disruption [ie. less learn-

ing] brings warm memories. At the end of the day the big question was: Who was responsible for their own behaviour today? Did anyone stop someone learning? We can take one off attributes from above, say, honesty and appraise it in the light of being responsible for yourself. Yoday the OECD has reported that bullying is still rife in NZ schools. I can say that it is rife amongst adults, too. Everytime you speak and fling out a sarcastic remark or a flippant comment about someone, that either elevates you above others, or, denigrates another person, you are a bully. Do we point this out to children? But the sad thing is that a sarcastic/flippant person needs help too.

If we use the honesty attribute and take away the absorbed viewpoint of self and apply it to the environment and responsibility there is a minefield out there. There are lots of wonderful groups/schools out there, I know, working ceaselessly for the environment. But, do you really care for the environment enough to give up: your plastic bottle of sugar drinks, your bottled water, the myriad ways you are still using little plastic bags when you say you are not using a single big plastic bag? Can you stop using gladwrap? How much are you going to contribute to the landfill because of today's shopping? How individually honest can you be about the environment? Self growth happens only through personal responsibility.

What is clearly evident, is that through using christianity to reinforce all those attributes, the most wonderful opportunity to discuss them through personal responsibility and thus achieve results, has been taken away. It is clearly evident also, there are times when everybody needs extra human support and that this issue is very complex and has many different levels. Times are changing so fast that cyber bullying and hate speech are in the picture too.

But, all of the values that contribute to whanau, and, community, and the world, need self appraisal and personal responsibility. We can then offer our [mostly] complete selves to be part of a whanau and community, and, they in turn will hopefully practise appraisal and responsibility. Be honest and appraise yourself today for your impact on the environment and those you met. Can you be better tomorrow? It's difficult. It's a challenge.

*Bev Woods
Ruakaka*



Rowells TYRES Ph 433 0313

Stockists of Maxxis Tyres

CALL BERT FOR YOUR TYRE DEALS

**New & Secondhand tyres
available in most sizes**



**On Call 24 hrs 094330313
or Bert on 021983724**



Car puncture repairs for pensioners - \$5

470 Marsden Point Road, Ruakaka

Courtesy car available by arrangement

Five fairy tern chicks so far this summer

Photo by Ayla Wiles

If the five fairy tern chicks, which have hatched so far this summer, survive to fledging this will be more than double the breeding success of last summer when there were just two chicks.

Fairy tern ranger Ayla Wiles photographed the two on the right at Pakiri last week. They are due to fledge in early January. There are another three chicks on the Mangawhai sandspit, where there are also two nests with eggs due to hatch any day now.

An early nest on the Waipu sandspit where an

egg was laid back in October was predated but the Waipu pair, known as Mr. and Mrs. Red because of their red leg bands, are preparing to have another attempt at nesting.

Ayla said spring and early summer weather conditions with no big storms bringing tidal surges have been much more conducive to fairy tern nest survival.

The New Zealand Fairy Tern is one of the most endangered birds on the planet with approximately



Fairy tern chicks and parents at Pakiri

40 birds remaining and just eight breeding pairs. As they nest on the ground in coastal areas they are very vulnerable to predation by introduced mammals.

Once widespread around the North Island and on the eastern South Island, the New Zealand fairy tern now has only four known nesting sites, at Papakanui Spit at the entrance to the Kaipara Harbour, Pakiri Beach and Waipu and Mangawhai sandspits

Brynderwyn lane will remain closed until March

The northbound passing lane on the south side of the Brynderwyns Hills on State Highway 1 will remain closed until March.

If you are wondering why this repair is taking so long, a New Zealand Transport Agency media release advises that while work to repair a failed retaining wall on the northbound side of the road has been completed, a second retaining wall on the same stretch of road is at risk of failing and work will get underway to repair the second retaining wall in January.

The northbound passing lane will remain closed until the second retaining wall is repaired and final road resurfacing is completed. Although the passing lane is closed, lanes remain open in both directions.

NZTA Media Manager Darryl Walker said the retaining walls are about 30 years old.

“To repair the first one meant digging out the old wall below the level of the road and replacing it with a

new H piled wall with concrete panels. The road has been rebuilt. The final road surface will be laid after the second wall repair is completed.”

The Transport Agency’s Northland System Manager Jacqui Hori-Hoult said, Over the Christmas holiday period there will be no work on site and the temporary barrier will be moved back to widen the lanes and raise the speed limit to 80km/h.

From the middle of January, the barriers will be shifted again, and a speed restriction of 30km/h will remain in place until work is completed in March.

She said, “The Transport Agency acknowledges this route is critical to Northland’s economy, its communities and the holidaymakers and tourists heading north over the summer holidays. We want to keep the road open with as little disruption as possible, while also carrying out the repairs that will ensure greater resilience and less disruption to road users in the future.”



Thinking concrete but don't know where to start?

Think Atlas Concrete

- We quarry the aggregate
- We manufacture the concrete
- We site visit to advise the best options
- We give you the choice of mix and colours
- We give a choice of local placers for you to choose
- We manufacture concrete to your requirements
- We stand by our product, you stand on it

Atlas Concrete

Your First Call for Concrete

Ph: 0800 888303 - Brynderwyn

or 432 5030 - Ruakaka



Call 021 070 8211

Owner /Operator Duncan Mackay



GENERAL CARTAGE SERVICE

Metal / Topsoil / Sand / Manure / Hay / Silage



WATER

Prompt Delivery And Reliable Service.

Healthboard Approved Drinking Water Carrier.



25 Ocean View Rise, Ruakaka

Just SOLD

Malcolm is delivering great results in your area.

For a free friendly appraisal call Malcolm on 021 783 533 or email us at breambay.nz@raywhite.com

Join our Bream Bay community page on <https://www.facebook.com/groups/breambaycommunity>.

Ray White are proud to offer a 10% discount on our service fee to SuperGold Card holders.



Malcolm Norton

021 783 533

malcolm.norton@raywhite.com

Licensee Salesperson
The Real Estate Shop Limited Licensed (REAA 2008)

rwbreambay.co.nz



Aaron Toddun & Associates Ltd
CHARTERED ACCOUNTANTS



- Farm and business accounts • Income tax • GST • PAYE
- FBT • Budgets • Cashflow forecasts • Company formations
- Dealer MYOB Accounting Software

For a professional and confidential service and a free initial consultation call your local Mangawhai Accountant or drop in at our new office, 1 Awatea Street Mangawhai Heads.
Aaron Toddun B/Com Dip/ComLaw

1 Awatea Street, Mangawhai Heads, 0505
Phone/Fax : (09) 431 4881 Mobile: 027 611 0616
Email: aaron@aarontoddun.co.nz

www.aarontoddun.co.nz

WEED CONTROL
CROP
GUN / GORSE
PASTURE SPRAYING
LAWN WEED CONTROL

BEN
M 021 762 727
P 09 432 0012

MCLENNAN
AGRISPRAY



Waipu Presbyterian Parish



Contacts:

Minister - Tom Waight - 432 0534

Mainly Music - Sharon Smith - 432 1050

Toy Library - Julie Malone - 432 0388

Church Hall Hire - Cally James 432 0534

Family Welfare & Foodbank:

Co-ordinator - Helen Matheson - 432 0239

Budgeting Advice - Bruce Matheson - 432 0239

The Crossroads Trust (financial support) Peter Couper - 432 0524 or email lynettejones@xtra.co.nz

Sunday Services

Ruakaka - Camellia Ave - 8.45am

Waipu - 50 The Centre - 10.15am

*Working with you
- for your Community*

LETTERS

Message to Housing NZ - Show some feelings for the community

Housing NZ recently withdrew its attempt at 30 plus, transit houses in Ruakaka, 25km South of Whangarei. The community was not made aware of this development until it had already been decided by Housing NZ.

In the future when Housing NZ wants to increase the housing supply perhaps they should follow governing guidelines that all citizens of NZ have to follow, and please do not hide behind a cute Maori entity title. Kainga Ora, can mean a lot of things, these words need context.

Let me remind you of what could help you with in future ventures. Do your homework, carry out a feasibility study, probably the most important step you should take. Show some transparency, some feelings for the community in which you wish to work in.

Transit housing as a concept, should be replaced by supplying permanent housing, with a chance to own. These houses should be built handy to where there is employment, such as orchards and crop farms as well as urban.

These are not difficult steps to take, but I think they should be taken

Winston Woods
Ruakaka

Worms provide a feast for herons

Last month I received a call from a Ruakaka resident I who told me that the blue herons were at his property. He said that at certain times of the year they come to his land and feast on the worms. He and his wife have counted up to 32 herons there at once. Wow! That shocked me that so many blue herons would gather at one place to eat worms. It would appear that at certain times of the year, the herons really like worms and when the tide is in full and they can't fish, worms are on the diet!

We were invited to go up and take some photos which Jeanette, my wife, and I did. There were between 15 and 20 there on the day that we went up (all spread out across the lawn) and we were really surprised.

Kevin Wigmore
Ruakaka



We'll have what you need to know !



Madonna 236sqm

\$450,760 incl gst

Includes: plans, consent, kitchen, appliances, tinted double glazed windows, tiles, carpet, blinds.



Wayne Pickerill
Managing Director

"Hi, I'm Wayne Pickerill, Managing Director and Project Manager for your new Fowler Home. Enjoy quality and all the benefits of dealing with an efficient, low overhead, nationwide company, where I will take a personal interest and be involved through to completion."



**FOWLER
HOMES™**

More designs at www.fowlerhomes.co.nz or visit our office at 63 Walton St, Whangarei. Phone Wayne Pickerill 438 4840

Council meets with residents of Massey and Brooks Rd to discuss road sealing options

The Whangarei District Council has held meeting with residents of Massey Road (on Thursday 5 December and Brooks Rd. (Saturday 23 November) to discuss its proposal to seal portions of both these metal roads under its "Ratepayer Contributions Seal Extension" scheme. The Council proposal is to seal 1.5 kilometres of Massey Rd. and 2 kilometres of Brooks Rd. at costs of \$600,000 and \$800,000 respectively. Ratepayers whose properties are alongside or have entrances to their properties from the portions of roads to be sealed will be asked to pay the sum of \$4,600 gst inclusive towards these expenses.

Eighty percent of ratepayers on the effected sections of road need to agree to pay the contribution for the sealing to be carried out.

To a suggestion that this method of charging is divisive as people living further up the road also benefit, and it might be better if everyone on the road were asked to pay half the required amount now and then another half when the whole road is sealed, Greg Monteith, the Council's Capital Works and Procurement Manager said, "There are pros and cons for any method of charging. Council is willing to work with the ratepayers with the aim of achieving sufficient support to seal a portion of the road within its allocated budget including assessing the level of support for sealing another portion of the road should the initial section not achieve the minimum 80% level of support."

Asked if there are future plans to seal the remaining sections of these two roads Mr. Monteith said "Hopefully Council will continue to provide budgets to fund its ratepayer contribution seal extension

programme and in the future, additional sections of the remaining portions of the roads may be prioritised for sealing subject to future funding allocations."

The Council has allocated \$3 million dollars in its 2019/2020 annual plan for road sealing.

And asked when the Massey and Brooks Rd. seal extensions would be undertaken, he said at the earliest this would be the spring and early summer of 2020.

Nook and Tahuna Tapu roads in Parua Bay, which were way down the list of sealing priorities in a 2013 Whangarei District Council list, appear to have jumped the queue and will also be sealed under the ratepayer contribution scheme this financial year assuming agreements to pay a \$4,600 contribution amongst property owners there reaches the 80 percent threshold. Asked if the high value of properties along these roads (some are listed for sale at over \$1.5 million) and the wealth of their owners played a part in the decision to seal these roads, Mr. Monteith said, "The value of the properties along each road was not a consideration in developing the programme."

He said the Seal Extension Programme for 2019/20 took into account:

- a regional spread of projects across the District
- meeting ratepayer demand/expectations
- meeting Council demand to reduce maintenance costs and customer complaints regarding levels of service on the roads
- meeting the available budget and
- allowing some projects to be completed in this summer's construction season.



Spice Route

FINE INDIAN CUISINE

Dine in or takeaway

All our curries are gluten free

Also fish & chips, pizza and burgers

Please contact us on: 09 433 0003
or phone our manager Vikrant at 020 411 87 823

OPEN 7 days from 4.30pm - 9pm.
And from 11am - 2pm Tuesday - Saturday.
Delivery in Ruakaka and One Tree Point

Follow us on facebook: **SPICE ROUTE Ruakaka**
5 Princes Rd., Ruakaka

SKIN CANCER DOCTORS WHANGAREI

SERVING NORTHLAND

094382188

Full Skin Checks and Mole Mapping.

Dermoscopy analysis of Moles
Surgical and Non-surgical options
No Referrals needed.
Southern Cross Affiliated Providers

Accredited Skin Cancer Doctors
with the Skin Cancer College of Australasia.
**Dr Christian Wieser, Dr Bruce Cottee
& Dr Celia Keane**



Delivering their high quality meat and their own meat products to residential areas throughout Bream Bay

To arrange a delivery
Phone the store on 09 601 3210
Text - 021 585 258
Or Email millersmeatsorder@gmail.com
and you will be sent an order form



Cameron Miller and Chloe Evans of Millers Meats, Waipu.
From this week Millers Meats will be making extra deliveries in Waipu, Waipu Cove, Langs Beach, One Tree Point and Ruakaka

Chloe and Cam of Millers Meats in Waipu are taking their high quality meat and their shop made meat products to a wider customer base. In October they started weekly delivery services to Waipu, Waipu Cove Langs Beach, Ruakaka and One Tree Point and are doing extra deliveries over the summer holiday period.

They will also be bringing a selection of their bacon, breakfast sausages, prime beef-steaks, lamb chops, fresh sausages, a variety of frozen sausages and anything else by

request to the Ruakaka Beach Holiday Park. They will be there from 9am - 10am on Christmas Eve and New Years Eve and on Friday and Saturday mornings from now until 25 January.

Cam is a butcher with 13 years experience and he takes pride in the quality of the meat he sells. With the exception of some frozen spare ribs, which he orders in especially for customers who have a liking for these, all of the meat he sells is New Zealand grown.

"We strive to stock the best meat NZ has to offer. Most of our meat products are from NZ farms," said Chloe.

Cam makes his own, bacon, sausages (two flavours fresh every day, with more varieties in the freezer), ham, salami and pastrami. He makes gluten and preservative free sausages, only available from the freezer.

Millers Meats sells free range chicken, pork, ham and bacon and gourmet wagyu beef. Fresh meat purchases are wrapped in greaseproof and brown paper, packed items, both frozen and fresh, are on compostable trays and Chloe and Cam are in the process of re-searching some compostable cling wrap.

DELIVERY DATES

Waipu, Waipu Cove and Langs Beach Thursdays from 4-6pm. No Boxing Day - Thursday 26 December delivery but a delivery on Friday 27 December 6.30pm - 7.30pm. Extra deliveries on: Sat 21 December from 4.30 - 6pm, Sun 29 December 4.30 - 6pm, Sun 5 December 6pm - 7.30pm, Fri 10 Jan 7pm - 8pm, Fri 17 December 7pm - 8pm.

Also FREE DELIVERIES to **Camp Waipu Cove**. Friday 20 December 6.45 - 7.45pm, Mon 23 December 4.30 - 5.30pm, Sat 28 December 6pm - 7pm, Mon 30 December 6.30 - 7.30pm, Tue 7 January 6.30 - 7.30pm, Tue 14 January 6.30 - 7.30pm, Tue 21 January 6.30 - 7.30pm.

Ruakaka Tuesdays from 4pm - 6pm and Thursdays from 6.30pm - 7.30pm until 23 January, with extra deliveries on Sunday 22 December 4.30 - 5.30pm, Sunday 29 December 6.30 - 7.30pm and Wednesday 1 January from 4.30 - 5.30pm.

One Tree Point Mondays from 7pm to 8pm and Tuesdays 4pm - 6pm until 21 January. Extra delivery days on Saturday 21 December 6.30-7.30pm, Sunday 22 December 6.30pm - 7.30pm and Wednesday 1 January from 6pm - 7pm.

Deliveries cost \$5 and must be received the day before and are subject to availability. Delivery is to residential areas only. Someone must be available to receive and pay for goods. Minimum order for custom packs \$50.
See Millers Meats Facebook page for more details.



POLICE REPORT

Two extra Police officers for the holiday period

Two extra Police officers began work in Bream Bay on Tuesday 17 January.

They will be stationed here for a month and will enable regular beach patrols and patrols of holiday hot spots. There will also be additional drink driving patrols.

Advice on beach safety and etiquette

On Saturday 14 December Constable Martin Geddes of the Waipu Police hosted a beach information day at Tip Rd. for members of Auckland's Chinese Community.

Body found in the water at the Marsden Cove Marina

The body of a man was found floating in the Marsden Cove Marina at 7am on Wednesday 4 December. The dead man was a 57 year old who had been living on a yacht, which was moored there. He appeared to have died overnight. Police are not seeking anyone else in relation to the death.

Two vehicle collision at Shoemaker Rd. Intersection

On 14 December at 9.30 am there was a two-vehicle collision at the Shoemaker Rd. intersection with State Highway One. A 75-year-old Waipu man at the wheel of a utility was waiting to cross the highway and saw a vehicle approaching from the north indicating it was making a left turn. He did not see a car following behind and pulled out onto the highway in front of it. Two people from this car, a 57-year-old man and a 60-year-old woman were taken to Whangarei Hospital with serious but, at this stage, not life threatening injuries. An 80-year-old passenger in the car and the man driving the Ute were not injured.

Sergeant Simon Craig of the Bream Bay Police said when you see a vehicle approaching and indicating it will make a left turn, you should not assume there is nothing behind it.

A timely reminder about the dangers of driver fatigue

On 8 December a driver fell asleep and crashed into the ditch on the Paparoa/Oakleigh Rd. He was not injured. Sergeant Craig said this is a "timely reminder about the dangers of driver fatigue."

Police speak to children who were using a holiday home swimming pool without permission

On 7 December the owners of a holiday home in Cove Rd., Waipu noticed on their security camera footage that a group of children had on a number of occasions been using their swimming pool without permission. The young people involved have been spoken to by the Police.

A goat named Peaches stolen from the Maungaturoto Hotel

On Friday 13 December a goat named Peaches was stolen from the Maungaturoto Hotel. Police have the number plate of the vehicle of the alleged goat thief and are making enquiries.

Tools stolen from Karawai St. shed

A shed in Karawai St., Ruakaka was broken into and tools were stolen overnight on 3 and 4 December

Northpower

Latest news & updates from around our Network

Northpower embarks on off-grid power trial

Northpower is teaming up with Hubands Energy and the Friends of Matakohē Limestone Island Society to install an off-grid power solution to the Ranger's house on the Island.

The \$51,000 project will replace the existing small-scale solar PV/battery system – which is supported by a petrol generator – and it could be completed before Christmas! Northpower Network General Manager Josie Boyd says the project is the perfect opportunity for the company to test and learn about off grid technology.

"It enables Northpower to gain technical experience with an off-grid system using the latest technology as these systems are becoming more viable as alternative for uneconomic parts of the distribution network," says Mrs Boyd.

"It also gives us the chance to work alongside Friends of Matakohē-Limestone Island Society and support their ongoing environmental activities on this historic island, while also gaining an understanding of consumer interactions with off-grid solutions." Mrs Boyd says supporting the development of alternative electricity solutions could help minimise costs to consumers in the long term.



From left to right – Josie Boyd, Darren Gash, Pam Stevens, Warren Huband, Russell Watson, John Ward are teaming up to install an off-grid power solution on Matakohē-Limestone Island.

NO HOT WATER? – CALL NORTHPOWER FIRST!

If you have no hot water call us first and we will let you know whether it is something we can fix or if you need to get your electrician in to help out.



Award for Excellence in Technology

Congratulations to Troy Panapa-Thurlby, Taz Snelling and Irimana van der Mei of MUDTech (pictured with Young Enterprise Scheme CEO Terry Shubkin) for winning the Northpower Award for Excellence in Technology.

Troy, Taz and Irimana (a combined team from Kaitaia College and Kaitaia Abundant Life School who have been doing YES through Papa Taiao) have built an underwater remotely operated vehicle to help with inspections of boats for the identification and control of marine pests that may have attached themselves to the hull below the water line.



There is significant interest from a number of parties – the Northland Regional Council included – as it could remove the need for specialist divers to inspect boats and/or expensive lifting of boats for inspection.

Northpower consumers to receive over \$10m

Most Northpower consumers are receiving a \$220 (including GST) discount on their November or December electricity bills, an increase from the \$120 distribution paid last year. That's because we are giving you a Northpower Pricing Discount – thanks to Northpower and the Northpower Trust. You will see a credit on your November or December electricity bill.

Those who don't receive \$220 (including GST) will receive \$63 (including GST) – you can learn more here <https://northpower.com/electricity/pricing>

A breakdown of your power bill

Opening balance	\$0.00
Current charges	\$239.56
Northpower Pricing Discount (including GST)	\$-220.80
Total amount due	\$18.76

EXAMPLE ONLY

Two new AEDs for One Tree Point

Two new Automated External Defibrillators (AEDs) have been installed at One Tree Point. One is outside the Marsden yacht Club and at the One Tree Point Store. These are now accessible to the public anytime by calling 111. The call handler will provide instructions on how to unlock and use the device.

"We are grateful for the generosity of the public for helping us raise sufficient funds for these vital, life saving tools and we wish to thank everyone who has supported this initiative," said St John Bream Bay Station Manager, Lyndon Reed.

Mr. Reed said there are more AED installations in the pipeline as Bream Bay St. John works to make them more accessible to the public.

St John Medical Director Dr. Tony Smith said every minute that goes by without CPR (Cardio Pulmonary Resuscitation) or defibrillation reduces the chance of survival when someone has suffered a cardiac arrest and survival chances can be doubled if people take three easy steps: call 111 for an ambulance, immediately start CPR and find and use the nearest AED.

"Using an AED is simpler than using a mobile phone. Anyone can do it, just turn it on and follow the voice instructions," DR. Smith said.

Locations of AEDs around the Bream Bay area are registered at www.aedlocations.co.nz, and can be found using an online map.

People who don't know how to do CPR or use an AED can sign up for a free one-hour training session



On the left, Alan Alcock, Commodore of Marsden Yacht and Boat Club with Lyndon Reed, St John Bream Bay Station Manager

run by St John. These sessions, known as '3 Steps for Life' will cover basic life saving skills and will be delivered from 10am every third Saturday of the

month, at the St John Ruakākā ambulance station on Tamingi Street. Participants can register their interest by emailing BreamBay.Station@stjohn.org.nz.

LIQUOR CENTRE

Xmas Cheers

\$41.99		\$21.99		\$34.99		\$38.99		\$12.99		\$23.99		\$29.99		\$24.99					
\$19.99		\$23.99		\$25.99		\$37.99		\$46.99		\$34.99		\$33.99		\$50.99		\$34.99		\$34.99	
\$36.99		\$43.99		\$48.99		\$51.99		\$59.99		\$69.99		\$52.99		\$25.99		\$23.99			
\$24.99		\$23.99		\$23.99		\$21.99		\$19.99		\$19.99		\$19.99		\$11.99					
\$29.99		\$23.99		\$13.99		\$12.99		\$21.99		\$22.99		\$18.99		\$15.99		\$12.99		\$15.99	

We're BIG on being local

Waipu Liquor Centre
15 The Centre, Waipu

Maungaturoto Liquor Centre
147 Hurdall St, Maungaturoto

LIQUORCENTRE.CO.NZ

PRICES VALID MON 9TH DEC – SUN 29TH DEC 2019. All specials may not be available in some stores. No Trade Sales.

LOOKING FOR THAT PERFECT GIFT? GIFT CARDS NOW IN STORE

Wishing you a very
Merry Christmas
and a safe and happy new year



Ian Kitchen

021 519 557

ian.kitchen@harcourts.co.nz



Cheryl Kitchen

021 736 658

cheryl.kitchen@harcourts.co.nz



Bear Morgan

021 734 903

bear.morgan@harcourts.co.nz



Rachel Rogers

027 432 7702

rachel.rogers@harcourts.co.nz



Tony Carrod

021 0290 0145

tony.carrod@harcourts.co.nz



WAIPU GREEN ESTATE 30 Argyle St

Priced from \$280,000

Ian & Cheryl Kitchen



RUAKAKA 89 Ata Mahina Way

Price By Negotiation

Bear Morgan



ONE TREE POINT 14 O'Farrell Drive

Price By Negotiation over \$700,000

Rachel Rogers & Tony Carrod



RUAKAKA 234 Port Marsden Hwy

Price By Negotiation over \$600,000

Ian & Cheryl Kitchen



WAIPU 92 South Road

Price by Negotiation over \$295,000

Bear Morgan



RUAKAKA 187 Takahiwi Road

Price by Negotiation over \$797,000

Rachel Rogers & Tony Carrod

Tauraroa Area School students volunteer at Ranburn



Residents and staff at Ranburn Rest home enjoyed the company of Tamzin Terry (left) and Tobin Stevens (right) Year 9 students from Tauraroa Area School when they came to do some volunteer work earlier this month. They helped put up and decorate the Christmas Tree.

Freedom camping ambassadors back

Ellen Parker and Roger Foster have volunteered to be Ruakaka's *Responsible Freedom Camping Ambassadors* for another summer.

Over the peak holiday season, they will once again call each evening at the Freedom Camping area in front of the Ruakaka Beach Reserve greeting the campers and making sure the people staying overnight in vans and buses are complying with the rules.

The scheme is organized by the Whangarei District Council, which supplies information packs and leaflets to hand out to the campers. The Council has received Ministry of Business, Innovation and Employment (MBIE) funding for the programme, part of which is used to hire Armourguard enforcement officers to back up the volunteer ambassadors should they be needed.

The ambassadors will be asking freedom campers to make sure they don't leave any rubbish behind and will direct overflow campers to local commercial campgrounds. They will also be encouraging all campers to shop locally, patronise local tourism businesses and contribute money or time to local conservation organisations.

Extra rubbish collections

Extra coastal area collections start on 3 January 2019 and will continue until 8 February 2019. Only beach settlement areas will have a second collection.

In the Bream Bay area the usual collection on Tuesday and the second collection is on Saturday.

If you live on a rubbish collection route you will need to have your bags and bin at the kerbside by 7.30am on rubbish day.

If you do not live on a rubbish collection route you can take your rubbish bags and recycling bins to the nearest intersection with a collection route by 7.30am on rubbish day. Alternatively, you can take them to the Uretiti rubbish Transfer Station in Tip Rd. Waipu, which is open Monday to Friday - 8am till 1pm Saturday and Sunday - 8am till 5pm.

Christmas week rubbish and recycling



Key things to remember

Wednesday 25 December - Christmas day

- no kerbside collection
- Re:Sort and rural rubbish and recycling stations closed

The rest of the week rubbish and recycling will be collected one day later than usual.

Thursday 26 December Boxing Day

- The usual Wednesday route will be collected
- Transfer stations open as per usual schedule

Friday 27 December

- The usual Thursday route will be collected
- Transfer stations open as per usual schedule

Saturday 28 December

- The usual Friday route will be collected
- Transfer stations open as per usual schedule

Collection days will resume as normal from Monday 30 December

Extra coastal area collections start on Friday 3 January 2020 and will continue until Saturday 8 February 2019

Only beach settlement areas will have a second collection, as in past years.

Northern Coast areas

- usual collection on Monday
- second collection Friday in beach settlement areas.

Bream Bay Coast

- usual collection on Tuesday
- second collection on Saturday in beach settlement areas.



Blue Bin



Your new blue bin is for glass bottles and jars - clean, unbroken, any colour.



Red Bin



Your red bin is for type one PET and two HDPE plastics, and tins or aluminium cans.



Cardboard and paper



Your cardboard and paper can go in a bag or small box beside them along with your rubbish bag.

For more information go to
www.wdc.govt.nz/recycling



**STORAGE
BREAM BAY**
Makohina Street, Ruakaka, OT18



- Fully Secure
- Carded Gate Entry
- Security Camera Surveillance
- Reasonable Rates

Website: www.storagebreambay.co.nz
E-mail: info@storagebreambay.co.nz
Phone: 021-432701 Fax: 09-4327029



Waipu Primary junior production took us on a visit to Lazy Dazy Village

Waipu Primary School’s junior production directed by Penny Goodall, told the story of a Lazy Dazy Village which relied on a troupe of Munchkins to keep the streets tidy while the villages never even bothered to put their litter into their set of colour coded bins. When the Munchkins got fed up and went on strike the rubbish started to pile up and got very smelly. Things were getting desperate when Mayor Evie Boulton clomped in wearing some outsized high heels and put things right. Told with enthusiastic singing and dancing and colourful costumes the story line was perfectly pitched to the age group of the children.



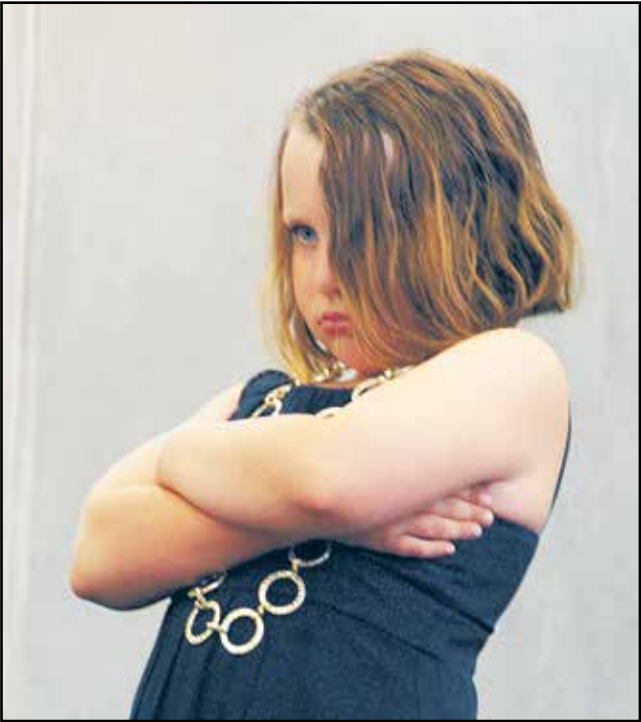
Pippa Hilton-Jones as a beautiful flower



Coby Britton, shared the role of narrator with Kara Jacoby



Litter Muncher leader Bella Mackay



Evie Boulton was a very bossy Mayor who told the villagers to clean up their act

One Tree Point
Annual Combined
**ARTS
EXHIBITION**



JANUARY 25TH & 26TH 2020
10AM - 4PM

Marsden Cove Marina Marquee
Gold Coin Entry | Eitpos Available
Art Demonstrations & Sales

Proudly Supported By



MACSWAY
JIFFY FOLDING LTD
The People of Burren



TOTALSPAN
SPECIALIST ROOFING & CLADDING
WITH EXCELLENCE SINCE 1982



Westmoreland
HOMES
Housing Solutions



Bream Bay
REALTY



CREATIVE
NORTHLAND



MARSDEN COVE
MARINE SERVICES



Coast

**HOUSEHOLD WATER
SUPPLIES**

the
**water
guy**

Proudly supplying
the Bream Bay area.

Ministry of Health
approved supplier

0800 WET WATER
0800 938 928



Dream Singers: Chelsea Stuart, Amy Fraser, Eden Rodrigue and Anabel Gammage

Durham Farms polyface, organic and an exciting place to work

There's a lot going on at Durham Farms and Adrian Townsend, one of the farms three owners is so enthusiastic he just doesn't stop talking about it.

Adrian along with Craig James and William Watts purchased a 200-hectare share-milking unit here in 2016. Later they bought another block, a 140-hectare dry stock unit. The certified organic farm stretches between Waipu Gorge and the Ahuroa River.

Adrian describes it as polyface farm with lots of different activities complimenting one another.

The list includes: beef rearing, dairy farming, free range chickens, bee keeping, and organic vegetable growing. There is also glamping, with some flash looking tents set up down by the river with double beds, hot running water, kitchen and bathroom facilities alongside.

Lynda Bayer, who in a previous life was the horticulture teacher at Bream Bay College, looks after the chickens and the vege gardens. The chickens are kept in three big free-range flocks at different locations and are used to control insect pests. They proved very effective in ridding the gardens of an armyworm infestation a few years ago.

Animal welfare is a big consideration and the hens have some nice looking accommodation. In fact a row of bright yellow caravans I noticed as I drove in, which I thought might have been the glamping site, turned out to be chicken houses. A notice on the Durham Farms' website offers older chickens to good homes.

The farm has a 180 head herd of prime angus cattle, which is comprised of 60 breeding cows, 60 rising one year olds and 60 finishing cattle. Proving just how far the three Durham Farm partners are taking their animal welfare, self-sustaining, all organic principals they have just purchased an abattoir. Adrian said they had hoped to be able to set up a mobile abattoir, with the idea that the cattle would not need to undergo the stress of being loaded into trucks and transported. This proved too difficult under Ministry of Primary Productions rules so the compromise is an abattoir in Hikurangi with 30 acres of grazing land attached so the cattle can be rested for three days before they are slaughtered. This will be the only certified organic abattoir in the North Island and the expectation is other organic beef growers will send their animals here.

Back on Durham Farms they have reduced the size of the dairy herd from 335 to 180 so there is less pressure on the land and no need to buy in supplementary feed. Nurse cows are used to rear calves for the replacement-milking herd.

Rather than drenching the animals with the conventional chemical mix, on Durham farms they dose cattle and chickens with cider vinegar. They have planted an apple orchard so in the future this can be produced on the farm.

Olive trees have been planted on a steep hillside with a view to future olive oil production.

With the commitment to making the farm self sustaining and growing everything the cattle eat on the property, how will they get on in a drought? Lynda explains that the pasture is sown with a mix of 27 plants, including some deep-rooted species such as daikon radish, chicory and plantain, which better survive dry hot conditions. Adrian pulls aside clumps of grass to show how the ground is still damp despite there having been no significant rain for almost two weeks. He says soil is the biggest carbon store in the world and its important to look after its health. No ploughing is carried out on the land so sub soil biota: bacteria, fungi, worms, and insects, is not disturbed and plants with deep roots are retained.

The farm has beehives, which are already producing honey for sale and a commercial organic vegetable garden, which supplies Auckland restaurants as well as a farm gate stall.

There is a big push to plant native trees on steep land and around rivers and streams, with 14,000 already in the ground. Water quality in the rivers is being monitored. The aim is to return 25 percent of the land to its natural state and Durhams Farms is part of the Brynderwyn/Piroa pest control group so predator control traps are maintained across the farm.

Nine people are employed to look after these various ventures.

Is the farm profitable? Adrian said the dairy and beef operations made a good return pretty much from the start and, after three years, the farm as a whole is beginning to show a profit. He said this is much better than most business ventures, which can



Adrian Townsend, one of the farm's owners, and Lynda Bayer who runs the chicken and vegetable growing operations.

take up to five years to show a return.

There were some big initial expenses. Just removing plastic silage wrap and other rubbish from the property cost in the vicinity of \$50,000.

Adrian says he and his partners have a 500-year plan for the land.

"For us as humans to continue on this planet we have to change the way we do things. We all need food to eat and here in New Zealand we have an incredible opportunity to produce food in a sustainable way. We need a bio diverse approach to farming and to work alongside nature."

Lynda said what she learned at horticulture college has been turned on its head. She finds this new approach exciting and endlessly challenging. From the high hills of Durham Farm looking out over the cattle herds, flocks of chickens, beehives and native tree plantings towards Bream Bay she says this is a wonderful place to work.



One of the three flocks of well housed chickens



CARE FOR YOUR FUTURE



START YOUR CAREER IN CONSERVATION

- If you want to advise people on ways to protect the environment
- If you're passionate about protecting the diversity of animals and plants
- If you're passionate about protecting the biodiversity of New Zealand
- If you're interested in the care, well-being and behaviour of animals
- If you're interested in controlling animal and plant pests
- If you're interested in science and research

visit: northtec.ac.nz/care



91 RARE ECOSYSTEMS IN NEW ZEALAND TO PROTECT

BETTER JOBS START HERE

study@northtec.ac.nz • www.northtec.ac.nz • 0800 162 100



NorthTec

TAI TOKERAU WĀNANGA

Ruakaka Stationery & Gifts

Ruakaka Town Centre
Shop local for all your needs:
Stationery, Books, Toys, Magazines
Greeting Cards, Clothing,
Gifts & Souvenirs

Phone
432 8104

New Zealand Post

Open Saturday until 7pm.



Marsden Point High Tides				
	AM		PM	
Thu 19 Dec	1.35	2.5	2.05	2.6
Fri 20 Dec	2.33	2.5	3.01	2.6
Sat 21 Dec	3.35	2.4	3.59	2.6
Sun 22 Dec	4.39	2.4	4.58	2.6
Mon 23 Dec	5.42	2.5	5.57	2.6
Tue 24 Dec	6.42	2.6	6.54	2.6
Wed 25 Dec	7.37	2.6	7.49	2.6
Thu 26 Dec	8.28	2.7	8.41	2.6
Fri 27 Dec	9.17	2.7	9.29	2.5
Sat 28 Dec	10.02	2.7	10.16	2.5
Sun 29 Dec	10.46	2.7	10.59	2.5
Mon 30 Dec	11.29	2.6	11.42	2.4
Tue 31 Dec	~	~	12.10	2.6
Wed 1 Jan	12.23	2.4	12.52	2.5
Thu 2 Jan	1.06	2.3	1.34	2.4
Fri 3 Jan	1.50	2.3	2.18	2.4
Sat 4 Jan	2.39	2.2	3.04	2.3
Sun 5 Jan	3.32	2.2	3.52	2.3
Mon 6 Jan	4.28	2.2	4.43	2.3
Tue 7 Jan	5.26	2.2	5.36	2.3
Wed 8 Jan	6.20	2.3	6.29	2.3
Thu 9 Jan	7.12	2.4	7.21	2.4
Fri 10 Jan	8.01	2.5	8.13	2.5
Sat 11 Jan	8.49	2.6	8.04	2.6
Sun 12 Jan	9.37	2.7	9.55	2.6
Mon 13 Jan	10.25	2.8	10.45	2.7
Tue 14 Jan	11.14	2.8	11.35	2.7
Wed 15 Jan	~	~	12.03	2.8
Thu 16 Jan	12.27	2.7	12.53	2.8
Fri 17 Jan	1.20	2.6	1.45	2.7

Bream Bay College Year 10 students undertake school improvement projects

Bream Bay College Year 10 students embarked on some school improvement projects to fill in the three weeks at the end of the school year. The students came up with a variety of ideas including: developing some bi-lingual signage, painting murals to brighten drab corners of the school, clearing the kikuyu from the long jump pit, clearing weeds from a ditch and making a decorative garden.

Gwyneth Cooper, the teacher overseeing the projects, said the students decided on the projects themselves and apart from a couple of ideas which were a little too ambitious for the allotted three weeks, she had given all the ideas the go ahead.



Deane Sands, Dakota Watts, Jacob Wynyard, Alex Lynch and Devin Gibson built a raised garden to decorate the entrance to the school's Whare and made use of a waka which had been positioned in front of the old whare and had been in storage as the centre piece.



Maya Newing-Peters, Mirabella Uphof and Zara Jacobson (absent from the photo) designed and painted a mural on the outside wall of a classroom. Maya explained that the pieces of the puzzle each represent subjects taught at the school. As Maori language and kaupapa is incorporated into every aspect of school life they surrounded the mural with kowhaiwhai designs and to represent the early Nova Scotian Scottish settlement in Bream Bay, they incorporated a tartan strip across the top. Their mural was the winning project in a poll conducted amongst students and teachers.

THE NEXT PUBLICATION DATE

of the Bream Bay News will be Thursday 16 January

The deadline for all copy is 4pm on

Wednesday 8 January

All Welcome



Candlelight Carol Service—Waipu

22nd December 8.30pm

Sing some old carols and learn some new ones
Take some time to reflect on the Christmas story

Waipu Presbyterian Church

50 The Centre, Waipu

The Marsden Lions Junior Citizenship Awards



Recipients from Ruakaka School: Caden Clarke, Eden Tuck, Shakia Puru-Castle, Cody Cassidy, Ramaria Taniwha, Elliot Dunn, Nova Anderson, Aria Armstrong, Ailsa Carrington, Lilah Cartwright, Alanni Tomes, Asher Beddis, Brady Martinovich, Erika Hamilton, Tayla Batten, Sophie Pram, Ethan McLeod, Rylee Walsh, Spencer Koellner, Bailey Warburton, Tahlia Morunga, Blake Slagter.



One Tree Point School : Logan Whitelaw, Gracie Cross, Mylee Haile, Samantha Foreman, Chayse Aarts, Ella Toovey, Bella Williams, Abby Johnson, Ella Watson, Ryan Corkill, Cruz Harlin, Mia Alison, Olivia Hay, Tiahna Bennett-Kawana, Isaac Bennet.



Bream Bay College: Emer Lea, Pippi Panui-Park, Jazmin Hancock, Marcia Simon, Aiyana Anderson, Jade Fox, Ethan Carroll, Lili Elisar, Anna Pirihi, Connor Williams, Jessica Andrews, Samantha Cowpland, Lily Matenga, Cairan Kay, Michael Ryland, Zara Jacobsen, Alex Lynch, Abbey McKegg.



Guest speaker Ben Tau

The Ruakaka Fire Brigade building was overflowing with proud parents and grandparents who had come to watch their children receive a Marsden Lions Junior Citizenship Award at a ceremony on Friday 6 December.

Fifty-five children from Ruakaka and One Tree Point Primary Schools and Bream Bay College’s year seven and eight classes were given certificates and a scroll attesting to their good character for use in future CVs. The initiative, the brainchild of Gladys Rowsell, was launched last year with the idea of encouraging local young people to aspire to good citizenship. The awards go to young people who have demonstrated

qualities defined in a Junior Citizenship code which requires them to be honest in what they say and do, friendly and helpful towards other people, generous with their time and talents to help improve your community without thinking about personal reward, courteous and well mannered, respectful towards senior citizens, willing to accept responsibility, sympathetic towards those who are sad and those who need support, careful with criticism, generous with praise, determined to improve, care for and not destroy our environment, loyal to their community and country and prepared to accept criticism of themselves and to be willing to improve.

The evening began with waiata performed by Ruakaka Primary children. After the presentations the young people and their whanau were treated to a supper provided by the Lions. Guest speaker was Ben Tau, a teacher aid at Bream Bay College, who said he loves to see the young people he works achieve .

WAIPU LOTTO & POST



Lotto

Postshop

Photocopying

Emailing

Newsagents

All stationery needs



The Centre, Waipu

Phone 432 0900

BREAM BAY

Link



Operates every Thursday from 1st August 2019

MORNING

9.00am	Departs	Kaiwaka Kaiwaka Hall
9.15am	Departs	Mangawhai Village Village Shops Bus Stop (by restrooms)
9.20am	Departs	Mangawhai Heads I-Site
9.35am	Departs	Langs Beach Corner of Wairahi and Cove Roads
9.40am	Departs	Waipu Cove Beach Car park
9.50am	Departs	Waipu Monument Bus stop
10.10am	Departs	Ruakākā Peter Snell Road (opposite Takutai Place)
10.50am	Arrives	Whangārei Rose Street Bus Terminus

*For travel within Whangārei see CityLink Whangārei timetable www.citylinkwhangarei.co.nz

or get your timetable from the Rose Street office.

AFTERNOON

3.00pm	Departs	Whangārei Rose Street Bus Terminus
3.40pm	Departs	Ruakākā Peter Snell Road (opposite Takutai Place)
4.00pm	Departs	Waipu Monument Bus stop
4.10pm	Departs	Waipu Cove Beach Car park
4.15pm	Departs	Langs Beach Corner of Wairahi and Cove Roads
4.30pm	Departs	Mangawhai Heads I-Site
4.35pm	Departs	Mangawhai Village Village Shops Bus Stop (by restrooms)
4.50pm	Arrives	Kaiwaka Kaiwaka Hall



OPERATED BY

LEABOURN

Ph: 0800 994 404

E: office@leabourn.co.nz

FARES	One Way	Return
Kaiwaka	\$7.00	\$10.00
Mangawhai	\$7.00	\$10.00
Mangawhai Heads	\$7.00	\$10.00
Langs Beach	\$7.00	\$10.00
Waipu Cove	\$6.00	\$8.00
Waipu	\$6.00	\$8.00
Ruakākā	\$5.00	\$7.00

ROUTE DESCRIPTION

Kaiwaka/Mangawhai Road, Molesworth Road, Mangawhai Heads Road, Cove Road, The Centre Waipu, Nova Scotia Drive, SH1, Marsden Point Road, Peter Snell Road, Marsden Point Road, SH15A, SH1, Otaika Road, Maunu Road, Walton Street, Rose Street Bus Terminal.

If you would like to be picked up elsewhere along the route, please phone Leabourn's to arrange this on the Wednesday before you want to travel.



CONTRACTED TO:



Northland REGIONAL COUNCIL

For service updates visit:

www.buslink.co.nz

Feedback to buslink@nrc.govt.nz

Scottish Country Dancing Club members donate Christmas hampers to local food banks.



Keith Bishop, and Megan Toole of the Waipu Highland Dancing Club delivering a Christmas hamper to Waipu's Presbyterian Minister Tom Waight and Helen Matheson, the church's Family Welfare and Foodbank co-ordinator

Members of the Waipu Scottish Country Dancing Club got into the Christmas spirit on their last club night of 2019, each donating items to two Christmas hampers which were given to the Bream Bay Anglican and Waipu Presbyterian Parish food banks.

The club meets regularly at the Waipu Coronation Hall on Monday evenings from 7pm from February to December. Guests are welcome to join in and give it a go for free. Regular dancers pay \$5 a night and a \$10 annual membership fee.

A women's heavyweight competition at 2020 Waipu Highland Games

There will be a women's heavyweight competition at the 2020 Waipu Highland Games on 1 January. Last year Susie Le Joie from Nova Scotia competed with the men as there was no separate class but this year the games committee is advertising a separate women's event. So far two local women have entered.

Another draw card will be 24-year-old New Zealand Olympic shot putter Jacko Gill, who has recently recovered from a serious illness, who has confirmed he will compete in the men's division.

Piping events begin at 9am on the day with a street march and grand entry to the park at 9.30am, when the highland heavyweight, fiddling and dancing competitions begin.

The Kids Clan Club running races start on the centre track at 10am and those wishing to take part in the Tug o War need to register at Arena 2 at 10am also.

At 1pm there is a massed pipe band march around the park and then a massed highland fling before the official opening at 1.15pm. At 2pm the Tartan in the Park fashion with age group prizes for the best tartan costumes begins on the Variety Stage.

One of the most popular items of the day the Heavyweight caber toss competition will be held this year at 3pm in the central arena. Entry costs \$20 per adult and is free to all those under the age of 17. They will be available at the gate but can also be pre purchased on the Waipu Highland Games website where a full programme of events is available.



Susie Le Joie at the 2019 Waipu Highland Games



Jacko Gill



- ❖ Chemical and non-chemical house washing
- ❖ Window cleaning
- ❖ Painting and staining – exterior house, decking and fences
- ❖ Water blasting - decks, driveways and courtyards
- ❖ Clean guttering and downpipes
- ❖ Pest control and spider spraying

Phone now for a FREE QUOTE
Tony 021 196 2949 or Melisa 021 075 6770

EXCEPTIONAL STANDARDS GUARANTEED

Coming up in February - The Waipu Car and Bike show

After the Waipu Highland Games, the next big event in the Caledonian Park will be the Waipu Car and Bike show scheduled for 9 February.

Last year the show attracted 600 car entries and 120 bikes and this is now the biggest car show in Northland.

Ron Cave, of the Waipu Lions and the chief organizer wants to prompt all those proud vehicle owners to start polishing in readiness for the show.

Entry free is just \$10. There is no pre registration. You just turn up with your vehicle on the day and pay at the gate.

There will be live music, food stalls, prizes in 18 different categories and a prize for the most stylish outfit.

This year proceeds will go to the Waipu Fire Brigade, Bream Bay College and the Bream Bay Swimming club fundraising by



Harley and owner at the 2018 show

helping out on the day.

Ron said all the people working to run the show are doing this as volunteers and all the money raised goes back into the community.

What's On in Bream Bay

- **WAIPU LIONS FUN RUN AND WALK** Fundraiser for the Child Mobility Foundation. On Saturday 21 December on the beach in front of the Waipu Surf Lifesaving Club. Safety briefing 8.20am, start time 8.30am. Adults \$10, Children and students \$5. Under fives free. 9km and 4.5km run or walk options
- **WAIPU BOUTIQUE SUNDAY MARKET.** In the Waipu Coronation Hall. from 9am - 1pm on 22 December and then on Sunday 12 January.
- **CAROLS AT LIFEPOINT** Sunday 22 December. Preceded by a free lamb on the spit dinner from 5pm.
- **COMMUNITY CAROL SERVICE** At the Waipu Presbyterian Church. Sunday 22 December, starting at 8.30pm.
- **THE WAIPU CHRISTMAS PARADE** Christmas Eve Tuesday 24 December. Starts 7pm in The Centre, Waipu. Prizegiving around 7.30pm in the Caledonian Park.
- **THE WAIPU HIGHLAND GAMES.** Wednesday 1 January.. Street march and entry to the park at 9.30am. Kids Clan club races Centre Track at 10am. Massed pipe band and Highland Fling, and Parade of Costumes - 1pm followed by official opening at 1.15pm. Tartan in the Park fashion competition at 2pm on the Variety Stage. Tug of War competition at 2.15pm. Caber toss Heavyweight Competition 3pm.
- **CEILIDH** Scottish Country Barn Dance in the Celtic Barn at 7.30pm.
- **SUMMER FESTIVAL RACES AT THE RUAKAKA RACE TRACK** On Saturday 4 January. 11am - 5pm. Racing, free kids entertainment, live music. Admission \$10. Under 17 years free
- **MARSDEN COVE MARKET** Next market Sunday 19 January from 9am - 1pm. In the marquee at the Marsden Cove Marina.

TRADES & SERVICE DIRECTORY Ph 09 432 0209

astech electrical
N O R T H L A N D



Electrical Contracting & Repairs
Electrical Inspector, Caravan EWO, Coolrooms, Air con., Heat pumps

P: 09 432 7968

M: 0274 780014

E: ashtond@astech.biz

Tailwaggers Small Dog Grooming Service

- ◆ Full or mini grooming service \$35.00 / \$50.00
- ◆ 10% discount for super gold card holders
- ◆ Loyalty card, every sixth groom half price
- ◆ Pick up & drop off service Waipu, Langs Beach & Ruakaka \$5.00
- ◆ Grooming & day stay extra \$20.00
- ◆ Nail clipping & ear cleaning free with appointment



Dianne Arthur Ph: 09 4321 790 Mobile: 021 255 8160
Email: diannewarthur@gmail.com

A fully fenced lawn area provides a break for your dog, and be assured, he/she will be cared for and pampered during their visit.



**LONG RUN ROOFING & CLADDING,
RE ROOFING & SPOUTING,
EDGE PROTECTION**

Ph Terry 021 562 269
Email: wetarroofing@xtra.co.nz

RELIABLE & PROFESSIONAL SERVICE

This Space Now available

\$36.30 gst inclusive
or for regular customers
(six or more insertions)
\$27 gst inclusive

WELLSFORD
GAS



Shane Ostermeyer

P: 0272 761 761 E: info@wellsfordgas.co.nz
Wellsford Gas

GAS COOKING • GAS HOT WATER • GAS HEATING



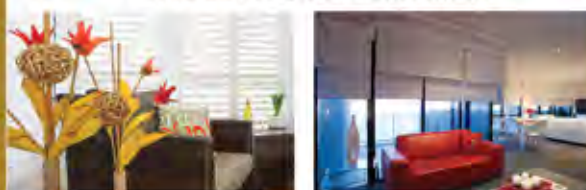
Specialising in all earthworks and drainage,
rural, residential and commercial.

CARTAGE, GPS DIGGERS & BOBCAT

Covering Waipu, Ruakaka, One Tree Point & Mangawhai
Contact : Aaron McAulay – 027 6228 529

**BLINDS
SHUTTERS
& CURTAINS
WHANGAREI**
Locally Owned and Operated

**Rollers, Venetians, Verticals,
Shutters, & Curtains**



Ask about our discount for houselots

Free in-home measure & quote
Free Installation

Phone Gail 0211 95 35 35

www.blindsandshutters.co.nz

Roland Mosley

Licensed Building Practitioner

**35+ years experience in
Residential and Commercial Building.**
Project Management a speciality.

Correct phone number is: 0275 556 362
rolandmosley78@gmail.com

MOSLEY BUILDERS LTD.



SHADES DIRECT - SAILS
- AWNINGS
- CANOPIES

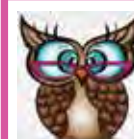


Call for an obligation
free design, and quote

Phone 0800 SHADES,
0800 742 337
Rodger 021 274 2337

THE OUTSIDER
Aluminium Awning System

or visit **www.shadesdirect.co.nz**



The Office Chick

Phone/Text: 027 235 3479

Email: breambayofficechick@gmail.com

Now available for all your administration,
accounts and secretarial needs.

Mobile service - your office or ours.
Pick up and delivery service available.

theofficechick



TRADES & SERVICE DIRECTORY Ph 09 432 0209

MANGAWHAI LANDSCAPE SUPPLIES



PRODUCTS
FOR **YOUR**
GROWING
NEEDS...

- Bulk and bag products
- Plants • Fruit trees
- Gifts • Greenwaste
- Organic compost



107 Mangawhai Heads Rd,
Mangawhai Heads
Ph: (09) 431 5445

Follow us on
Mangawhailandscapes
f i

Ph: 09 432 0123

BREAM BAY GLASS

FOR ALL YOUR GLASS NEEDS



Mob: 0274954548

**This Space
Now available**

**\$36.30 gst inclusive
or for regular customers
(six or more insertions)
\$27 gst inclusive**



O'MALLEY CONTRACTING LTD | CONCRETE SPECIALISTS

- FOUNDATIONS
- HOUSE SLABS | STAIRS
- RETAINING WALLS
- DRIVEWAYS | CARPARKS
- EXPOSED AGGREGATE
- COLOURED CONCRETE
- COMMERCIAL | RESIDENTIAL
- LICENCED BUILDING PRACTITIONER

Free No Obligation
Quote



FAMILY OWNED & OPERATED

021 2200 198 | OMALLEYCONTRACTING.COM

ABSOLUTE CONCRETE

www.absoluteconcrete.co.nz

CULVERT PIPES

Spun and reinforced

Crane truck delivery

Drainage Merchant - Hardware Store

Email: sales@absoluteconcrete.co.nz

Phone (09) 431 2211

KAIWAKA

**MACSWAY
SCAFFOLDING LTD**

WE BUILD, HIRE, ALLOY MOBILES, TEMPORARY
FENCING, & SHRINKWRAP

Ph: 09 432 7643 • 0274 726 772
macsway@xtra.co.nz Kepa Road, Ruakaka



Garden Design

Plans and plants for great gardens

021- 285 - 2192



Ph: 09 430-0453

OPERATING QUARRIES AT WAIPU & RUARANGI

TOP MACHINE OPERATORS

Entrance ways, Driveways, Farm raceways, Building Sites & Earthwork
Developments, Portable Crushers for hire for Farm and Forestry Quarry
work and roading

LOCALLY OWNED AND OPERATED • PHONE ANYTIME

Find us online at www.aandscontractors.co.nz
Farm races a specialty

Bream Bay Electrical Ltd



Will Campbell

027 35 33 555

breambayelectrical@gmail.com

Bream Bay Concrete Ltd.

Free Quotes • Reliable Service • Quality workmanship

- Concrete pads
- Shed floors
- Pathways
- Home floors
- Driveways
- Concrete cutting
- Excavation works
- Retaining walls
- Paling fences
- Profiles for homes & sheds
- Subfloors & boxing

Mark Royals Ph: 432 0107 Mob: 0274 433 130

PD Electrical LTD

New Installs, Renovations, Maintenance

Peter Dick 021-262 9516

Email: peterldick@hotmail.com

Tractor Mulching

100hp tractor with high bodied yffails,
mulcher, park finishing mowers, slashing
Gorse & blackberry spraying

Also mechanical tractor
repairs

Phone Bain McGregor
0274 979 013
or 09 432 0527



**Grant McLean
Stock Agent for Bream Bay**

Ph mbl 021 7758 48 mbl, hm 432 1602
Email: skincarla@xtra.co.nz



All aspects of stock sales including:

- dairy beef • bobby calves • store cattle • live export heifers
- sheep • pigs • supplying stock for slaughter

Also caters for small block holders.

Carrfields

Livestock

Ruakaka Motors

Mechanical and Auto Electrical
Repairs and Servicing



Monday - Friday 7.30am - 5pm
Open Saturday morning 8am - 1pm.

Tyres and Batteries
Warrant of Fitness testing

Phone 432 7233

PARADISE QUARRY

PARADISE QUARRY STONEMASONS

Specialists in stunning stone for landscape

Suppliers & installers of northland's own schist for all your
stonemasonry & landscaping Requirements

(09) 432 2722 or GEOFF (021) 972 139
www.paradisequarry.com



KAIPARA FLOORING CO

32 Hurdall Street East Maungaturoto
Independently owned & operated

Supply & Installation of Carpet, Vinyl, Vinyl Woodlook Planking
Stockist of 2 & 3 mtr wide vinyl & Carpet Short Ends
Residential & Commercial First Class Installations

Now accepting O Card with 6, 12 & 18 month interest free terms

For a free measure & quote

Ph Christine (09) 946 9886 or 021 515 415

BLIND PRO

Blinds • Awnings • Shutters

Indoor blinds and outdoor screens

Call us today for a free, no obligation
consultation and quote

ph 09 423 9661

website www.blindpro.co.nz

email info@blindpro.co.nz

**McQUINN
PUMPS**

How's Business?
... It's Pumping!

24/7 SALES, SERVICE & INSTALLATION | PUMPS & WATER TREATMENT
PHONE SUPPORT AVAILABLE

0800 627 846
PHONE FREE

NOW AT 72 KIOREROA ROAD
—ALONG FROM RD1 & ITM

Deadline for next issue - Wednesday 8 January

TRADES & SERVICE DIRECTORY Ph 09 432 0209



DRAINAGE:

- * Septic Systems * Water Tanks * Truck & Digger Hire *
 - * Subdivisions * Domestic * Commercial *
- Certifying Drainlayers

Licensed Contractor for
Waste & Drainage Work



EARTHWORKS:

- * Subdivisions *
- * Farm Work: Effluent Pond Design & Build, Dams, Races *
- * House Sites * Driveway Prep * Lawns * Roading *

P. 09 432-7877 M. 027-432-7877
E. karl@hansende.co.nz



4T-DIGGER – BOBCAT – TIP TRUCK

Property Maintenance – Driveways – Building Sites
Stump & Tree Removal – Hole Boring – Chain Trencher
Calf Shed and Stockyard Cleaning

KAIPARA – WHANGAREI – RODNEY

Phone Matt: 021 199 6677
Email: mprabrownecontractors@gmail.com



No job too small,
No travelling time charges
Free advice

Phone 0274 882371 Or 09 431 4882
Email: hollis@hotmail.co.nz



LOW COST DRIVEWAYS & SURFACING NEEDS

Concrete or asphalt beyond your budget ...

We have the next best solution for a
fraction of the price.

Call for a quote, you'll be pleased you did!

Paradise Quarry Contractors

Geoff (021) 972 139 or (09) 432 2722

For contractors who 'think' ...



- All aspects of Drainage and Earthworks
 - Commercial and Residential
 - Retaining and Foundation works
 - Earthworks - house cuts - farm and race - drilling
- CERTIFIED DRAINLAYER LBP BUILDER**

almondcontractors.co.nz
Contact- info@almondcontractors.co.nz 021 134 4993



- Interior Exterior Renovations & Repairs
- Decks, Fence, Retaining
- Minor Earthworks (2 Tonne Excavator)
- Swimming Pool & Spa Repairs and Servicing (25 years experience)

John Owner/Operator

021 154 8801

jc repairsbreambay@gmail.com SEE OUR FACEBOOK PAGE

M.V.B. Electrical Ltd.

Working in Bream Bay since 1977

Repairs • Installations • Advice

Mike van Blommestein

Phone: 09 432 1015 • Mobile: 0274 783 749
Email: mikevanb@xtra.co.nz



FRASER KNIGHT

Ph 09 433 0115 Mob 0274 987 515



GOOD RATES, NO JOB TOO SMALL

09 432-1599 or
027-292-2833

grbint@xtra.co.nz

MANGAWHAI SMALL ENGINES

Grasshopper, Husqvarna and Honda dealer



194 Molesworth Drive, Mangawhai
Ph: 09 431 5270 or Mb: 021 655 481
Email: msengines@xtra.co.nz



Your First Choice in Flooring

Ed Fudge 021 1944 020

E-mail: floorcraftfirst@gmail.com

Web: www.floorcraftwhg.co.nz

Freephone: 0800 46 47 48 Ph: +64 (09) 438 0527

49 Port Road, Whangarei



RUAKAKA

STUDIO - HOLIDAY HOMES - B&B

BOOK ONLINE OR PHONE

Ph: 09 432 7025 Mob: 021 2722 739

website for online bookings: www.breambayaccommodation.com



FOR ALL YOUR
EARTHWORKS & CARTAGE NEEDS

Suppliers of: topsoil, compost, woodchip,
bark, sand, pebble, rocks and firewood.

Ph/Fax 09 432 8418 or 021 768 940

458 Marsden Point Rd. PO Box 142, Ruakaka 0151
email: lawsoncartage@xtra.co.nz



FAST WINDSCREEN REPLACEMENTS & CHIP REPAIRS

- Mobile service or come to our workshop
- Ultra competitive pricing • Insurance claims welcome.
- Windscreen replacement in under an hour.

Phone Conrad on 022 036 2916
2/17 Gumdigger place.

Carrs Quarry

One Tree Point Road
Ruakaka



Crushed Aggregates Available ex Quarry

Contact us: Angus 027 244 6100
Walter 021 519 605



Garry Smith
Mob 027 738 7888

Textured Ceilings
Asbestos Fibrolite
Asbestos Lagging

Ph 09 432 7305
Fax 09 432 7304
email: gasbestos@xtra.co.nz
14 Bream Bay Drive,
Ruakaka, 0116

BREAM BAY NEWS PHONE 09 432 0209

Email: breambaynews@xtra.co.nz

Post copy to : Bream Bay News, RD 2, Waipu
Email: breambaynews@xtra.co.nz
or leave it at the Waipu or Ruakaka Post and Lotto Shops

FOR SALE

KUMARA New seasons. Just dug. Also agria potatoes. 34 Marsden Point Rd. or Phone 432 7477 anytime.

WATER TANKS

09 431 2211

sales@absoluteconcrete.co.nz

WORMS FOR SALE

For worm farms
Phone 432 0209
or text 027 432 0070

2020 CALENDARS SELLING FAST!!!
ONLY LIMITED NUMBERS AVAILABLE
DON'T MISS A GOOD OPPORTUNITY

Scenic images of Bream Bay. ONLY \$10
Ideal gift, includes envelope ready for posting.

Available from
Ruakaka Stationary & Gifts, Westpac Bank
One Tree Point Store,
Marsden Cove Store,
Waipu Library or SeniorNet Ph 4327 692
Please support our SeniorNet annual fundraiser!

BUSINESS FOR SALE

THE BREAM BAY NEWS IS FOR SALE

After 16 years I think it is time to hand over to somebody new. I would prefer to sell to someone who has journalism experience and am willing to help a new owner learn the necessary production skills.

Price on application. Phone 027 432 0070

CLASSIFIED ADVERTISING

Costs \$5 for up to 20 words and 20c for each additional word.
Boxed, approx 4cm sq adverts cost \$15 plus GST

Phone your advert through to 432 - 0209

email it to: breambaynews@xtra.co.nz

Post to: Bream Bay News, RD 2
Waipu 0582

or leave it with payment at *The Waipu Post shop*
or the *Ruakaka Gift and Lotto Shop*

SERVICES OFFERED

Cut it! Chip it! Grind it!

Tree Removal

- ✓ Pruning
- ✓ Chipping
- ✓ Stump grinding

Qualified & Insured
Ph Scott (0800) 468-9663
Arborcare Tree Maintenance

GLENMOHR
water care

WATER TANK CLEANING

No need to empty your tank

- Vacuum or full scrub

Phone Mark Draper
09 432 0655 or 0274 707 607

Waipu Boarding Cattery
Excellent care and accommodation
Ph Sue 432 0394

HEALTH SHUTTLE

LINKING HANDS
Health Shuttle
Phone
(09) 431 8969



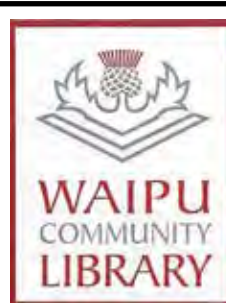
MEDITATION.

3 MINUTE TRANSCENDENTAL MEDITATION. FREE TO ALL.

Over many years I have found this practice to be a 'deep joy'.

Small gatherings to discover this ancient way are at my home. If you find yourself wondering – phone Bruce 0212671197

LIBRARY HOURS



Monday, Wednesday, Thursday, Friday & Saturday 10am - 1pm.
Tuesday 10am - 4pm.
Phone 432 0375

Ruakaka Community Library

Takutai Place, Ruakaka
432 8406
Mon - Fri 9:30am-3:30pm
Sat 9am-1pm
JP Service available
Saturdays 10am - 11am.

MARKETS

WAIPU Boutique Market SUNDAY

Handmade & Homegrown
ARTS | CRAFTS | FOOD

Sunday 22 December
9:00am - 1:00pm
Waipu Coronation Hall

Claire | 021 272 2294
Kate | 021 064 5698
www.waipumarket.co.nz

Ruakaka Community Summer Festival 15th February 2020

This will be an all day event with stall holders, music and activities for all ages. Indoor and outdoor sites available. Food and refreshments available for purchase.

Date: Saturday 15th of February 2020

Start time: 7 am

Stall Holder Fee: \$15

Secure your place early as we have limited space

(please bring your own gazebo, chair, table, etc)

Location: 9 Takutai Place, Ruakaka

Contact: Christine 432 7962 or 027 2529612

Email: ruakakarec@xtra.co.nz

Please come along and support your local community! To our local companies, here is an opportunity to be present and promote your business.

SITUATIONS VACANT



CONCRETE DRIVERS WANTED

We are looking for Concrete Truck Drivers to be part of our team for the delivery of ready mix concrete to Northland areas from our Brynderwyn/Maungaturoto Branch

Applicants must have a clean driving record, minimum Class 4 and be able to pass a pre-employment health, drug and alcohol test.

Please contact Bridget on 09 4318303 for an application.

We are looking to fill this role immediately. If you have the right experience and want to know more, contact us today!

WAIPU PRIMARY SCHOOL TEACHER AIDE (fixed term) two positions

We invite applicants for two teacher aide positions to provide in-class support to teachers. Approximately 16 hours per week for each position.

You will be working with three classes to help students in maths, reading, writing and special needs or with individual children.

Pay rate is dependent on experience. Expected start date is 3rd February 2020.

Applications close Friday, 10TH January 2020.

Please send your CV clearly stating your experience including the names and contact numbers of 2 previous employers to:

Julie Turner - principal@wps.school.nz

COACHING OPPORTUNITY

Waipu Rugby Squash Club Inc is seeking expressions of interest for a motivated and dependable coach with good rugby knowledge to coach our champion Premier team for the 2020 season.

All interested parties please contact Stephen Cunis (President)
stephenc@northcricket.co.nz by Tuesday 24th December 2019.

THE NEXT PUBLICATION DATE

of the Bream Bay News will be Thursday 16 January
The deadline for all copy is 4pm on
Wednesday 8 January

PUBLIC NOTICES

Ruakaka Recreation Centre

Christmas

opening hours:

Normal hours until Monday the 23rd of December.

The Rec Centre will be closed from Tuesday the 24th of

December to Friday the 3rd of January 2019! Reopens on the 6th of January!

Merry Christmas and Happy New Year, thank you for your support!



Bream Bay Medical Centre Ltd.

Monday - Friday: 8.30am - 5pm

Saturdays: 9am - 12pm

Please advise at time of booking if you require an extended consultation.

We will be closed for Public Holiday days on Christmas Day, 25 December, Boxing Day, 26 December and Saturday 28 December 2019.

And on 1, 2 and 4 January 2020.

People needing medical attention can attend the White Cross Medical Centre, 32 Reyburn St., Whangarei. Phone 09 4701083

In an emergency phone 111.

Marsden Point Road, Ruakaka Town Centre, Ruakaka.
Ph: 432 8060 Fax: 432 8230

New tenants for the Ruakaka Recreation Centre

The Ruakaka Recreation Centre is pleased to announce it will have new tenants occupying the former Educare buildings shortly.

The Rec Centre Committee had sought applications for lease of the buildings previously tenanted by Educare for several months. Submissions were received from a number of community groups and clubs as well as private businesses. The committee based its decision on what would be of most benefit to the centre and its many users. The extra income is an important source of revenue for the Ruakaka Recreation Centre to meet the ever-increasing operating cost of the centre, including repairs and maintenance. This income will continue to allow the Ruakaka Recreation Centre to charge low fees for the use of the centre, giving everyone the opportunity to benefit from our facilities.

Furthermore, the centres current revenue including the WDC's annual operating grant are insufficient to cover the costs of ongoing major renovations and repair to both the Recreation Centre and former Educare buildings. We understand not everyone may agree with the decision however the committee felt the most important factor that needed to be considered was the financial viability of the Ruakaka Recreation Centre.

The committee of the Ruakaka Recreation Centre decided to lease the buildings to two businesses these being a denture care company and a hairdresser who have both indicated a commitment for a long term lease.

The committee of

the Ruakaka Recreation Centre



The Bream Bay Community Patrol would like to thank the following for their support during the year.

Ali & Gail McKay.
New Zealand Police
AMI.

Ray White Real Estate, Whangarei
Bream Bay News.
Ultimate Care Ranburn.
Community Patrols NZ
Waipu Lions
Dr Herbert Morrison
Waipu Rugby Football Club
Geoff Spencer.
Waipu Tyres & Automotive

Ruakaka Community Library would like to put out there a huge huge Thankyou to the following Local businesses and local people for the work, materials and art work that has enabled us to have a float in the Christmas Parade.

- Ruakaka Point Timber for not only the materials but the loan of their truck.
- Men's Shed
- Bream Bay Painters.
- Bream Bay College Year 10 Art class and wonderful Teachers.
- Bruce Paton for the hay bales.

BREAM BAY ANGLICAN CHURCH CHRISTMAS SERVICES

Tuesday Dec 24th Christmas Eve

St Peter's Waipu 11.30 PM

Carol singing prior to the service

Wed. 25th Dec, Christmas Day

St Paul's Ruakaka 9.30 AM

Wed. Christmas Day 25th Dec

St Peter's Waipu 9.30 AM

Holy Communion served at all services
COME AND ENJOY THE CELEBRATION

BREAM BAY SUNDAY CHURCH SERVICES

Presbyterian Camellia Ave, Ruakaka: 8.45am. The Centre, Waipu: 10.15am. Prayer Service: 7pm

Encounter 223 Marsden Pt. Rd, Ruakaka, 10am.

Anglican 1st and 3rd Sundays - St Paul's Ruakaka 2nd and 4th Sundays - St Peter's Waipu, 5th Sunday - St Nicholas Mission to Seafarers'. Marsden Point All services start at 9.30am.

Catholic Holy Family Church, Ruakaka, 10.30am. Mass

Lifepoint. 300 One Tree Point Rd, 10.30am.

Bream Bay Community Support Trust

Takutai Place, Ruakaka Phone 09 432 7197

- Free medical clinic each Wednesday 9am - 12noon.
- Free budgeting service by appointment - 432 7197 .
- Narcotics Anon Wednesdays 6.30-730pm

The Bream Bay Community Trust offers:

- A Family Centred support team.
- Family violence Intervention advocacy
- Advice and referrals to other agencies and relevant support services.

Local people read
THE BREAM BAY NEWS
It is an effective
place to advertise

PREMIUM.CO.NZ | FINE PROPERTIES **PREMIUM®**

MERRY CHRISTMAS

HAVE A WONDERFUL AND SAFE CHRISTMAS AND ALL THE BEST FOR 2020.



TEAM MCKENZIE
SANDY 021 431 541
YANA 021 080 79342
 LICENSED AGENT & SALESPERSON REA 2008

20 YEARS OF LOCAL REAL ESTATE SALES EXPERIENCE
 Our Family Will Care For Your Family

PREMIUM PARTNERSHIPS | PROVEN RESULTS

WAIPU COVE | 25 ST ANNES ROAD
 Kiwiana Bach - XL Section

BRING THE WHOLE FAMILY AND CAMP



- Supersized 1652m² residential section with all services
- Newly renovated 120m² home with 2 bedrooms, 2 bathrooms and an additional rumpus room
- Easy walk down to the beach via access way
- Ready and available so your summer fun can start NOW!

VIEW | BY APPOINTMENT ONLY
PRICE | OFFERS OVER \$1.3MIL
PREMIUM.CO.NZ / 27518

COAST & COUNTRY SALES LTD MREINZ LICENSED REA 2008

Selling Bream Bay
Waipu Real Estate



COUNTRY DREAM ON 1.33HA
\$775,000

- Modern, stylish 3-bedroom A1 residence
- Double glazing, north facing - all day sun
- 3 fenced paddocks - completely level
- Extensive fruit orchard and vegie patch
- Plant nursery and 2 sheds
- Beautiful gardens. Immaculately presented.

Brilliantly positioned only a 5-minute drive from Waipu.

Mike Ferris 021 543 005 WPU 11170



RURAL LIVING, WALK TO TOWN
\$695,000

- Lovely 3-bedroom bungalow home
- Fully insulated with a heat pump
- Fully fenced 5415m² block with a pond
- Fantastic indoor/outdoor flow
- Fabulous decking for entertaining
- Ample space for the kids to play

So close to town yet seemingly so close to being rural.

Roger King 0277 555 001 WPU 11149
 or a/h 432 1381



RARE OPPORTUNITY IN WAIPU TOWNSHIP
\$645,000

- 2 storey, 4-bedroom home
- Bedrooms upstairs, living downstairs
- Zoned business 3 (Commercial)
- Hop and a skip to all amenities
- Fully fenced - backs onto Caledonian Park
- Double garage, tool shed, woodshed

An awesome opportunity for a home and income or a small business; alternatively, live with your family in a great position.

Roger King 0277 555 001 WPU 11167
 or a/h 432 1381

The Centre, Waipu www.waipurealestate.co.nz 09 432 4000

Bream Bay REALTY LTD Proud Sponsors of **SPCA WHANGAREI**

Town Centre, Ruakaka
Ph: 09 433 0300
Email: info@bbrealty.co.nz
www.bbrealty.co.nz

NEW LISTING



SEA AND STARGAZERS

Do we have the property for you! Positioned to maximise the sun & views on 4.8ha of grazable land. At a modest 190m², this two bedroom, one bathroom home has an open plan living, dining, kitchen, with oversized doors & windows. Outside, the timber decking, hedging & courtyards all add to the sculptural aspect of the building itself. A unique property in a supreme location! **\$1,075,000 bbrealty.co.nz #3975**

JANINE GOLDSMITH ph 021 432 793

NEW LISTING



MODEST ON THE OUTSIDE

Step inside and this roomy four bedroom, two bathroom home at 187m² has the space for a family. Located so close to the Ruakaka Town Centre and the banks of the Ruakaka River. Kayaking, SUP Boarding and fishing just across the road. Less than two kilometres to our fabulous East Coast surf beach. Current tenants have lived in the home since new and looked after it as their own. Keen to stay.

Price \$695,000 - bbrealty.co.nz #3976
LYNN PARKER ph 021 795 546



MAKE YOURSELF AT HOME

This well presented solidly built home will serve you well for years to come. Low maintenance plaster/brick home with an easy care section with a large private backyard with a spacious patio. Inside is neutral colours, large open plan sunny living with three bedrooms plus a study. Off street parking for the camper or boat. All of this in a quiet no exit street and a short drive to Marsden Cove Marina.

Price \$715,000 - bbrealty.co.nz #3956
FIONA SOUTHOORN MNZM ph 021 317 775



SUPERBLY LOCATED

Handy to all the amenities, shops, doctors, schools etc. This affordable elevated, sun-drenched three bedroom home, with basement garage and workshop, is situated on 809m² section, with views of the Ruakaka River. The vendors have enjoyed this home and brought their young family up here, now it's time for somebody else to refresh and revive this great investment on Marsden Point Road, Ruakaka.

Price \$499,000 - bbrealty.co.nz #3974
JOANNE DEWSON AREINZ ph 021 780 622



HARBOUR SIDE—HARBOUR VIEWS

This property shouldn't be missed if sea views and position are priority. Immaculately presented & especially well designed giving privacy to family members. Lounge, bedrooms & bathroom downstairs with main bedroom, ensuite, separate toilet & living area upstairs flowing out to a veranda. Approx 100mtrs from the waterfront via a walkway this property is beautifully landscaped with minimal garden maintenance.

Price Now \$849,000 - bbrealty.co.nz #3952
FRANCIE STOKES ph 022 656 0165



EVERY DAY IS A BEACH DAY

Watch the rise & fall of the tide from your lounge, check out the kids in the reserve playground, lie on the beach & soak up the rays, swim, launch the boat from beach, the choices are endless. Down a quiet no exit street the home has 4 bedrooms, 2 (new) bathrooms, kitchen, family room & lounge looking out to the reserve & beyond to the sea. At the rear of the property is a two bedroom self-contained studio flat.

Price \$1,150,000 - bbrealty.co.nz #3936
JOANNE DEWSON AREINZ ph 021 780 622