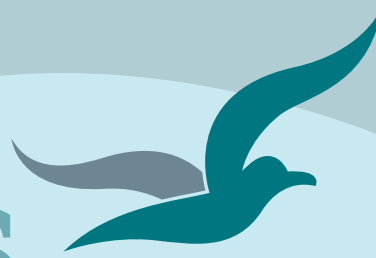


# Bream Bay News



Est.1967 | Locally owned and operated | Delivered FREE twice a month 20 July 2023

## Affordable Quality

- \* SECURITY DOORS
- \* INSECT SCREENS
- \* SHOWER DOORS
- \* BLINDS
- \* AWNINGS
- \* WARDROBE SYSTEMS

[www.homeplus.co.nz](http://www.homeplus.co.nz)



34 Albert St  
Whangārei

Est 1977

PH: 438 9452

[whangarei@homeplus.co.nz](mailto:whangarei@homeplus.co.nz)

## Is this the worst year ever?

As far as some of this district's long time farmers can remember – this is the worst year ever in terms of rainfall and storms.

Ritchie Guy, who has been farming in Waipu for 67 years, said 1956 was a very wet winter but then the summer of 1956/57 wasn't like the summer we have just had.

"This is the worst period of weather I can remember." Malcolm Sandford who has been keeping rainfall records since 1983 said he is glad he has retired from farming. At his home in Waipu where he takes regular rainfall readings he has recorded 1414mm of rain this year to the end of June.

Last year he recorded 1697mm for the whole year and this was already a high rainfall compared with previous years – 1014mm recorded for 2019 and 905mm recorded for 2020.

Malcolm keeps an eye on the Caledonian Park where he was volunteer caretaker until he retired from this position a few years ago.

He has never seen the park as wet as it is at present. The Caledonian Society derives income from campervans staying at the park but at present the ground is much too boggy.

Ritchie farms beef cattle at his farm on Cove Rd. in Waipu. He feeds his stock daily with hay and silage, that he managed to make last summer, taking advantage of the few fine days. It helped that he has his own bailer and didn't need to wait on a contractor.

He hasn't had to reduce his herd numbers but the wet greasy ground makes it difficult to feed out, as many

*Continued on page 3*

## Best dressed at the ball

*Photo by Peter Davies*



Riki Taiaroa and Nina Quan were judged the best dressed couple amongst a crowd of elegantly dressed people at the Waipu Winter Ball held in the Coronation Hall on Saturday 8 July. The ball is a new edition to the Waipu Winter Festival which runs through the month of July.

*More Waipu Winter Festival pictures on page 10.*



## Langs Beach 27 Taranga Road

559 sqm 4 1 2

Price by Negotiation

Christine Birss 027 235 4323 [christine.birss@bayleys.co.nz](mailto:christine.birss@bayleys.co.nz)

MACKYS REAL ESTATE LTD, BAYLEYS, LICENSED UNDER THE REA ACT 2008

### Easy Family Bach @ Langs Beach

This funky beach pad shows clearly the owners talent and desire to achieve a very functional property with the ambience of 'baches of old'. Keeping a simple focus on great indoor/outdoor flow, the main living area interacts well and spills out onto the large decking area, with the kitchen positioned at the rear of living area. Standing behind the kitchen island you have a lovely view while sorting dishes or preparing salads etc

Easy walk to the beach, or sit back on the deck and enjoy the sea view

[bayleys.co.nz/1153306](http://bayleys.co.nz/1153306)

**BAYLEYS**



### FREE MEDICATION SERVICE

Did you know that you can access free medication from Orrs Unichem Pharmacy Ruakaka for certain medical conditions without visiting a medical centre or hospital? This is called the Minor Ailments Service.

The minor ailments initiative is part of the Minister of Health's 2023 Winter Plan (<https://www.beehive.govt.nz/release/comprehensive-boost-health-system-winter>) and looks to reduce pressure on hospital services in areas recognised as consistently and persistently experiencing system pressure. Northland is one of these areas. Orrs Unichem Pharmacy is pleased to be offering this service to the Bream Bay area.

These are the types of conditions that Orrs Unichem Pharmacy can treat:

- Diarrhoea/Vomiting/Dehydration
- Bacterial Eye Infections
- Eye inflammation
- Pain/Fever
- Head lice
- Scabies
- Eczema/Dermatitis
- Minor skin infections

Unfortunately, not everyone will meet the criteria as set out by the Ministry of Health but we will work with you to find the best solution. Please come into the pharmacy or ring us (4327756) and we will have one of our pharmacists attend to your needs.

**Orrs Unichem Pharmacy**  
Serving the Bream Bay Community for over 40 years

## THE BREAM BAY NEWS

is published by Bream Bay News Ltd.

Address : RD 2, Waipu Phone : (09) 432 0209

Mobile: 027 432 0070 Email : breambaynews@xtra.co.nz

Website: [www.breambaynews.co.nz](http://www.breambaynews.co.nz)

Editor: Marilyn Cox . Accounts : Susan McRae.

Technical assistance... Geoff Spencer

Advertising design and website maintenance... Megan Lea.

Printed by NZME

We distribute 5,900 copies twice a month throughout Bream Bay, Maungaturoto and Mangawhai.

**HAMMER HARDWARE**  
It's your local

For all your Household Needs, DIY and Gardening Supplies,  
Fencing Equipment, Plumbing & Electrical Fittings.

**HIRE EQUIPMENT AVAILABLE**

**OPEN 7 DAYS** Monday - Friday 8:00am - 5:30pm  
Saturday 8:00am - 4:00pm | Sunday 9:00am - 3:00pm  
Public Holidays 9:00am - 3:00pm

Waipu Hammer Hardware | 35 the Centre, Waipu | 09 432 0292

## EDITORIAL

### We need a paid local person with a ute, a shovel and a tray full of metal

It's surprising to learn that volunteers, and there are many in Bream Bay, don't have rights similar to those of paid employees and can be dismissed from a job without just cause or any formal procedure such as appears to have happened to Keith Crawford and Nigel Taylor – see story on page 7.

Volunteers, while not reliant on their work for income, do often need their jobs for other important reasons such as to give them a sense of purpose and for social interaction.

Most of us are happiest if we are able to exercise our skills and talents. What's more our communities are very dependent on volunteers, often retired people who use their years of experience in paid work. I often think the world would come to a halt if it were not for the generosity of all the people who do things for free.

While there is no law in place to protect volunteers from unfair dismissal surely principals of fairness should apply. Perhaps a law change is required here or at least a code of practice to ensure the good people who give so much to us all are treated with due respect.

We might need to organise a team of volunteers to look after our local roads. Potholes and slumps just get bigger and more numerous and road signs, which have fallen over, remain on the ground or in roadside drains.

The Whangārei District Council might do well to employ a local person to take care of some of the smaller road damage problems promptly. A handy man or woman driving around in a ute with a load of metal and a shovel might be able to fill some of those potholes before they get bigger and at least put up warning signs where dangerous slumps in the road have developed. These days though such a worker would need to be accompanied by two road safety trucks with flashing lights, half a dozen people with stop/go signs and dozens of road cones to set out and then pick up at every minor job. The expense of all this would, likely be too much for the Whangārei District Council which has opted for a 2023/2024 rate rise of 7.9% which sits at the lower end on the scale of local government rate rises around the country.

Marilyn

## WIN

### A Winter Staycation at Waipu Cove

Camp Waipu Cove & The Cove Cafe are excited to offer our customers the chance to win an amazing Waipu Cove Staycation!

**PRIZE INCLUDES:**

- ✓ One night's accommodation in a Deluxe One Bedroom Self-Contained cabin for up to 5 people at Camp Waipu Cove (valued at \$240).
- ✓ A \$200 voucher to enjoy a meal at the Cove Cafe during your stay

**To be in to WIN:**

Stay at Camp Cove & dine at the Cove Cafe during the month of July

Terms & Conditions - Minimum spend \$100. Receipt & booking reference must be presented to the Managers at the Cove Cafe to be entered into the giveaway draw. Accommodation to be redeemed outside of peak times.

**Camp Waipu Cove**



## Is this the worst year ever?



A bog has formed on the Tāhuna track in back dunes at Uretiti

parts of the farm cannot be accessed by tractor.

'I have a good four when drive tractor but if I drove down some of those hills I would never get out.'

The ground is so full of water now that even a small rainfall of say five or 10mls is enough to make it boggy again.

Jared Halse, who has a dairy farm in Ruakākā, said the almost constant wet weather is making a lot of extra work for farmers.

With stormy wet weather last November he gave up trying to grow feed crops but instead made double his usual quantity of silage, which he is putting to good use this winter.

Jared said keeping his cows well fed stops them from moving around too much and damaging pasture.

He has managed up until now but calving is about to start and if the weather continues to be wet and cold this will be a difficult time.

'We will have to check the cows twice a day as we can't leave the little newborns out in the cold and wet.'

He said in wet weather cows might move away from their calves to seek shelter and it is hard to be sure the calf has had its vital drink of colostrum. The wet and the mud make it difficult for cows to recognize their calves, which they do largely by smell.

Graham Hargreaves of Waipu agrees, 'Its definitely a tough one.'

By 7 July he had already recorded 1600mm of rainfall at his Helmsdale Rd. farm this year, compared to 855 mm for the same period in 2022, 670mm in 2021 and 593.5 in 2020.

'It's been pretty relentless'

With all the storms and rain over the summer his farm only managed to get 20% of its usual maize harvest. While they had lots of baleage they have had to buy some in as well.

With water logged paddocks Graham feeds out twice a day on pads. He said the cows don't move around so much churning up the paddocks if they have full bellies

'But it all comes at a cost.'

Despite everything farmers are optimists. Jared says he is looking forward to the days getting longer as we head into spring.

Ritchie is confident the weather will improve.

Graham says he will most likely try planting maize again this year.

'We have been growing maize for 23 years and last season was the first time we had significant crop failure'.

With other farmers he has been meeting with the *Foundation of Arable Research FAR* to share ideas.



### WINTER PLANTING TIME



Come and visit us in our little slice of paradise.

Email: [breambaygreenworld@gmail.com](mailto:breambaygreenworld@gmail.com)  
or phone 0274 952 441.

You can also reach out to us through  
our website at [www.breambaygreenworld.nz](http://www.breambaygreenworld.nz).  
656 One Tree Point Road.

We are open from  
Tuesday - Saturday 8:30am - 4.30pm.

### BREAM BAY CURTAINS BLINDS AND SHUTTERS

PH 0204 632 432  
FOR A FREE IN HOME  
CONSULTATION  
CALL SUE

AVAILABLE 7 DAYS A WEEK COVERING  
WHANGAREI TO MANGAWHAI INCL KAIWAKA  
[BBCURTAINSANDBLINDS@GMAIL.COM](mailto:BBCURTAINSANDBLINDS@GMAIL.COM)

## CALL SUE TODAY

# 0204 632 432

## CATHERINE STEWART

# ALL OVER FARMS



Specialising in country and lifestyle property sales throughout the Kaipara and surrounding region, Catherine and her team are dedicated to delivering premium outcomes for their clients.

**Top Sales Person Bayleys in the North 2023**

**Catherine Stewart** 027 356 5031

[catherine.stewart@bayleys.co.nz](mailto:catherine.stewart@bayleys.co.nz)

MACKYS REAL ESTATE LIMITED, BAYLEYS, LICENSED UNDER THE REA ACT 2008



**ALTOGETHER BETTER**

## Passionate about sport? Thank your ref!



Ciao, kia ora, and hello to everyone in Bream Bay!

I'm always impressed by the hive of activity on our sports fields every weekend – especially in winter, with the freezing winds and rain! From the Oakura Sportspark and Hukerenui Domain in the north of our District, across to the Mangakahia Sportspark and Maungakarema Recreation Reserve on the west and down to the Takahiwai Sportspark and Ruakākā Recreation Grounds in the south, Whangārei District Council maintains a total of 23 sports grounds and recreation facilities across our District, and it's obvious our need for sports facilities just keeps growing.

Northlanders are passionate about sport. Whether it's in a supporting role or being in the team, it's a key part of our social (and family!) life up here in the North. What strikes me most about our sporting community is the number of people volunteering their time and efforts in volunteer roles. I'm talking about our umpires, coaches, referees, kitchen volunteers and support crew. The people who show up at every training session, game, and organisational meeting to make sure our sports season goes off without a hitch. These are the people our sporting community rely on, sacrificing their free time with no thought of reward or recognition. Without them, we wouldn't have the muddy, wet, happy, healthy, and exhausted kids we see every weekend – so thank you to you all.

Making sure we have the right sporting and recreational facilities for our communities is an important part of our future planning at Council. Our communities need to have the right facilities in the right places, and to make sure we get it right, you need to let us know what you need, and where you need it.

We'll be asking for your feedback on sports facilities (along with many other things), to help shape the 2024-2034 Long Term Plan (that's the larger, 10-year plan that directs Council decision-making). Now that Council's Annual Plan process has wrapped up, the Long Term Plan consultation is next in line, and I'll be sharing more information about this as we get closer to consultation time.

For now, I just wanted to acknowledge the people who volunteer to help, and the whānau, caregivers, educators and sports club members who enable kids and adults alike to play the games they love. Your support helps build pride in our District, strengthens communities, and gives our young people a chance to be part of our fantastic sporting culture here in Whangārei.

*Vince Cocurullo  
Mayor, Whangārei District Council*

## Letters to the Editor are welcome

Email them to: [breambaynews@xtra.co.nz](mailto:breambaynews@xtra.co.nz)

Post them to: Bream Bay News,

547 Mountfield Rd. RD2 Waipu. 0852

or drop them off at the Waipu

or Ruakākā lotto shops

## LETTERS

### New Petrol Station at Millbrook Road and SH1 not a good idea

In a recent 'Bream Bay News' there was a report on an application for a petrol station and fast-food outlets to be built on the corner of Millbrook Road and SH1. I do not believe this is a good idea.

Any new facilities will have an immediate and ongoing negative impact upon the businesses and facilities in Waipu.

The Museum is the WDC Information Centre for the area and also is reliant upon visitors to survive. It currently runs on volunteer support and its survival must be important to the WDC.

Fast-food outlets on SH1 are likely to cause the closure of businesses in Waipu.

There is a petrol station in Waipu, and an EV Charging Station in the Museum carpark. There is a petrol station at the Ruakaka roundabout and a new Truck Stop and motel and facilities being built on Port Marsden Highway just off SH1. There appears to be no need for a new petrol station in the area.

One would question how this new development fits within the Long Term Plan for the WDC? It is also noted that the recent Waipu Placemaking discussion made no mention of this new development nor was there any mention of or noted demand for this development.

The development negatively impacts upon the retention of rural land. Productive farmland is required in New Zealand and the suggested possible future building of industrial buildings on this land would be counter to this.

The WDC has noted that the resource consent process is in its infancy and any decision will be made in accordance with the Resource Management Act 1991.

I would urge all residents to look at this proposed development and decide if we really need more development on farmland or should it be within current and proposed industrial development in the area?

*Richard Cole  
Waipu*

As seen on Grand Designs 2019

**COASTAL CONSTRUCTION PROJECTS**

0274 320 007

REGISTERED MASTER BUILDER    QUALIFIED TRADESMAN CARPENTERS    MARCUS@CCP.NZ    WWW.CCP.CO.NZ

## Building in Whangarei, Kaipara, Far North



### Hunter 164sqm

**\$425,928 incl gst**

Includes: plans, consent, kitchen, appliances, tinted double glazed windows, tiles, carpet, blinds, heatpump.



Wayne Pickerill  
Managing Director

"Hi, I'm Wayne Pickerill, Managing Director and Project Manager for your new Fowler Home. Enjoy quality and all the benefits of dealing with an efficient, low overhead, nationwide company, where I will take a personal interest and be involved through to completion."



**FOWLER HOMES™**

More designs at [www.fowlerhomes.co.nz](http://www.fowlerhomes.co.nz) or visit our office at 63 Walton St, Whangarei. Phone Wayne Pickerill 438 4840



## Ruakākā School children learn about the Nova Scotian migration to Waipu

By Jackie Craymer

Recently, two groups of Ruakākā School children spent time investigating the way colonisation and settlement have been central to Aotearoa / NZ's histories for the past 200 years – an aspect of the new history curriculum.

The Year 5 and 6 group travelled to Waipu, basing themselves at the Heritage School in the Heritage Centre. While one group went on a walk around The Centre learning the origin of street names and finding buildings and sites relating to early Nova Scotian settlers, the other group spent time in the Waipu Scottish Migration Museum. While in the museum they concentrated on the journey from Scotland to Nova Scotia to Waipu including items used in ship building and navigation. They also looked at the kinds of houses that the settlers built and items that are displayed, which relate to their early life in



Jackie Craymer displays some of the items used by Waipu's early Nova Scotian immigrants. Holding up a candle she told the children that without electricity children would have used candles to find their way to bed. She asked the children what

else they would go without if there was no electricity

Waipu. After morning break the two groups swapped over.

Rather than travel to Waipu the Year 1 – 3 students spent time with the museum educators in their classrooms. As well as finding out where the Waipu settlers came from and how they got to Aotearoa / NZ these

students were focussing on what these settlers did for housing, work and food. A data show provided pictures and information and items from the museum gave them a 'hands-on' experience. They saw things such as a shoe last, a butter churn, a china potty and lots more.

## Kāinga Ora staff visit house in Tiki Place where late night raid occurred

The Bream Bay News sent some questions to Kāinga Ora about a night time raid on one of their houses in tiki Place in the Ruakākā Village last month when two carloads of men arrived at the address and proceeded to break windows and smash up a vehicle parked alongside.

We asked if Kāinga Ora had reacted in any way to this occurrence and what rules are there on the behaviour of Kāinga Ora tenants to prevent negative impacts on other tenants?

A reply arrived too late to include in our article about this incident in the 5 July issue but here it is below from Caroline Butterworth, Deputy Chief Executive for Kāinga Ora in Tāmaki Tai Tokerau.

"Kāinga Ora has not received any complaints regarding the specific incident raised by the residents

but staff visiting Tiki Place have observed damage to one of our homes and a vehicle.

"We have spoken to the customer in the home to understand more about the circumstances leading to the damage and to check on their safety and wellbeing. "Where a customer, their visitors or whānau cause disruptive behaviour that negatively impacts neighbours, Kāinga Ora can and does use tools under the Residential Tenancies Act to address this behaviour. If neighbours are concerned about illegal behaviour they should, in the first instance, contact Police.

"Where a customer is a victim of an attack we will involve other agencies as appropriate to support a customer and their neighbours to feel safe in their homes.



09 988 9049

whittakersfunerals.co.nz | admin@whittakersfunerals.co.nz  
25 Kapa Road Ruakaka 0171 | PO Box 241 Ruakaka 0151



Owner /Operator Duncan Mackay



GENERAL CARTAGE SERVICE  
Metal / Topsoil / Sand / Manure / Hay / Silage



WATER  
Prompt Delivery And Reliable Service.  
Healthboard Approved Drinking Water Carrier.

Call 021 070 8211



Thinking concrete but don't know where to start?

Think Atlas Concrete

- We quarry the aggregate
- We manufacture the concrete
- We site visit to advise the best options
- We give you the choice of mix and colours
- We give a choice of local placers for you to choose
- We manufacture concrete to your requirements
- We stand by our product, you stand on it

Atlas Concrete

Your First Call for Concrete

Ph: 0800 888303 - Brynderwyn

or 432 5030 - Ruakaka

## LETTERS

# Mana Whenua Lead Community Well-being Consultation



Rugged up and waiting for the outdoor movie to begin: Nikora and Amiria Rakena and Darlene Cassidy

There have been a number of tragic events that raised some concerns for the well-being of whānau living in the rohe of Patuharakeke. As an urgent response a group of Patuharakeke members were mandated collectively by three Patuharakeke entities and endorsed by kaumātua to conduct and facilitate a number of community well-being consultation hui. These hui were to provide opportunities for all of the community to have their voices heard, and to identify where the inequities are for whānau, with a strong focus on Māori whānau and tamariki.

On the 18th of May at Takahiwai Marae – an open community hui with guest speakers Dr Emily Henderson MP Whangārei and Nathan Mikaere Wallis child neurologist attended via zoom to support the whānau and community in what was identified to be the beginning of a long journey of recovery and healing. This hui came two days after a community karakia was held in Bream Bay led by Phil Paikaea.

The 18th of May hui hosted by Mana whenua in attendance were all the local schools, their principals and staff, ECE services, kaumātua, local residents, youth services, social service providers, addiction recovery services, doctors, medics, agencies including Māori wardens, Salvation Army, Te Puni Kōkiri, Ministry of Education staff, neighbouring iwi, and many more whānau, parents, grandparents and caregivers. The kōrero went well into the night and most didn't leave the marae until 11pm. There was a huge lift of wairua felt as the full marae talked, cried, and listened to each other.

Another seven hui followed with whānau, kaumātua, community and agencies, one hui included guest speaker, Dr Hinemoa Elder, specialist in child and adolescent psy-

chiatry.

Of the many gatherings held there was a unanimous decision to hold a tamariki celebration. A group of kaumātua residents of 40 years from the Ruakākā village suggested the tamariki celebration be held in the heart of the village. The Te One reserve was suggested and this was made possible by Mana whenua who have traditional and historical connection to the area. The name Urumatariki meaning to enter a new phase and new year was given by Patuharakeke kaumātua. This blessing enabled the event to share

and reflect some local history for the local residents to learn. Many were grateful for receiving this taonga, to deepen their knowledge of where they live. Urumatariki was a prominent Patuharakeke ancestor and was also the son of Te One.

The working group tasked with planning the tamariki event worked hard to acquire permits, access approval, funding, health and safety compliance, public liability, site plans and marketing the event all of which was achieved in record time. With the support of the Patuharakeke Te Iwi Trust Board and other community groups such as The Villy Day Out committee members, Safe Man Safe Family, Bream Bay Community Support Trust and Dr Emily Henderson. Funding was received from Whangārei District Council to hold an uplifting celebration for tamariki and whānau, Te Puni Kōkiri also provided funding for the consultation and community event.

The Urumatariki festival was a beautiful day starting with a special karakia paying tribute to Atua Māori, Tūpuna, the Maunga and Moana, thanking them for their offerings and clearing the skies for tamariki to enjoy a wonderful day and movie night. These blessings were well received by the community that basked in the sunshine and blue skies even though rain was forecasted, the night sky was just as special with the Matariki stars appearing and even a shooting star was breath taking for the tamariki to see while watching the Avatar movie.

The Urumatariki festival offered 200 tamariki gift packs to celebrate the new year. To receive gifts tamariki lined up to tell Lulu Belle, the fairy character from Mahi Pai, what their strengths and dreams are and together made magic wishes.

The free event was sugar free, offering fruit all day, water, sausage sizzle

and oysters as additional treats for mums and dads!

Touch NZ, Northland Volleyball and Community Connect had lots of fun sporting activities and gave away lots of prizes. Some tamariki played for hours so they needed lots of fuel for the day. Aspirations were shared by parents to hold regular touch competitions. Touch NZ is excited about the requested initiative for the community.

The Mahi Pai show was a highlight for the tamariki, 80% of the Mahi Pai show is delivered in Te Reo Māori. Normalising Te Reo Māori is a fundamental part of the Mahi Pai kaupapa. The taniwha and Lulu Belle remind tamariki throughout the whole show that they are loved, they are important.

The Avatar movie was a huge success! 200 free hot pizzas were delivered with complimentary popcorn to cars by working volunteers. 200 glow sticks were handed out to tamariki and lots of fun was had with their glowing lights matching the stunning Matariki stars that came out to bless the evening. Over 125 car loads parked up and were well looked after by traffic control and Māori wardens, a special thank you to whaea Tauwira! Also, a special thank you to Ruakākā St John's Ambulance who also made sure everyone was in safe hands and made their ambulance hall available in addition the St Paul's church made their facilities available. Of the hundreds of whānau that attended everyone was respectful, you could feel the community vibe. Pack down and clean up was fast and minimal. A huge thank you to all the amazing volunteers who worked all weekend on the ground and to all those who worked behind the scenes to ensure Te Urumatariki festival was going to create special memories for all tamariki.

Te Urumatariki was the last community consultation, where 40 whānau surveys were completed. Their valuable contributions will conclude the data collection, gathered from nine consultation hui. The findings will identify the community's highest needs and any inequities. Recommendations will be made to directly influence solutions.

A final thank you to everyone who contributed to the community hui. A special mention to Bream Bay College for providing a venue and kai for one of the community hui. Also, Bream Bay Community Support Trust and People Potential for providing a venue for community and Kaumātua to hui, Patuharakeke Te Iwi Trust and Takahiwai Marae, thank you all for your manaakitanga.

Lisa Minhinnick

Member of the Patuharakeke Response Group



For Sale



162 Brooks Road, Waipu

5 3 6

Floor Size: 256m<sup>2</sup>

Land Size: 1.072ha

Asking price: \$949,000

Open Home: Sundays

Tina Subritzky

021 059 7285

tina.s@arizto.co.nz

Licensed Salesperson (REAA 2008)





## Sacked volunteers told they have no rights

Volunteers at the Waipu Hospice Shop have been left scratching their heads as to the reasons why two valuable and popular members of their team have been sacked by North Haven Hospice management.

Nigel Taylor and his partner Keith Crawford have been volunteers at the shop – Nigel for two years and Keith for five.

During this time they made a number of suggestions to management about how communications could be improved with the shop volunteers and made several complaints about the actions of a person employed as a volunteer manager.

In particular, they were offended by what they felt was a sarcastic attitude with the comment “Have a nice day off”, when, without electricity at their home, trees knocked over, restricted communications and Civil Defence advice not to drive anywhere they made the decision not to open the Waipu Shop following Cyclone Gabrielle.

At a meeting the couple had with paid Hospice volunteer liaison and management personnel to try to resolve some of these issues they were told several times that as volunteers they had no rights.

The meeting ended amicably however with Nigel, who has extensive management experience, offering to help with a restructuring at North Haven Hospice. However, shortly after this meeting while Nigel and Keith were on holiday they were stunned to receive an email telling them both not to return to work at the Hospice shop.

The reasons given for their dismissals were: that Nigel had installed a phone from the shop's stock to replace one that was faulty (in fact this was done by another volunteer) and Keith had mentioned to the landlord that some new carpet would be nice. Keith said this

was done in a joking manner as he and the landlord often engaged in banter of this sort.

Other shop volunteers have questioned the dismissals. One sent a letter to the North Haven Hospice Board pointing out how useful Keith and Nigel had been at the shop.

Together they had made up two thirds of the male volunteers and were needed to help unload furniture from the delivery truck.

Keith has been the Wednesday Team Leader and had taken over responsibility for sorting books; carrying out repairs when these were needed as well as repairing donated artworks.

Nigel had upgraded the shop signage from hand written to printed signs and reorganized the filing system.

Some volunteers said how much they have enjoyed working with Keith and Nigel and that their Wednesdays at the shop were always a lot of fun.

And some have said they are now planning to resign as they feel that volunteers should not be treated in this way.

While Nigel has several other community organizations he is involved in, Keith would very much like his job back as he enjoyed the social contact and the friendships he made with customers and other volunteers.

Both Keith and Nigel say they still support the Hospice movement despite the treatment they have received.

Helen Blaxland, CEO of North Haven Hospice, declined to comment on this situation citing confidentiality obligations to staff and volunteers.

She said, “wW have confidentiality obligations to staff and other volunteers and are unable to comment on this matter. Thank you and the Waipu community for their support for care of the dying in our district.”



**BREAM BAY STORAGE**

INSIDE/OUTSIDE storage at 50 Cove Rd., Waipu

**Free phone. 0800 432 135**  
**enquiry@breambaystorage.co.nz**

**www.breambaystorage.co.nz**



**RUAKAKA SAFE STORAGE**

**99 MARSDEN PT ROAD, RUAKAKA**  
 92 Units from 6 x 3 to 1 x 1  
 Each unit individually alarmed and monitored  
 Electrified security fence

**Ph. 0508 273 262 or 0275 310 788**

**CLEAN - DRY - SECURE**

**Local people read**  
**THE BREAM BAY NEWS**  
**It is an effective**  
**place to advertise**



## INVESTMENT WITH UPSIDE

95 RODNEY STREET, WELLSFORD

### Strategic opportunity

This 3,352m<sup>2</sup> Freehold corner site sits astride SH1 and SH16 in Wellsford. A diversified income of \$415,108 p.a. with CPI or turnover reviews, which could be significant now that SH1 bypasses Warkworth. Astute investors should consider.

### FOR SALE BY DEADLINE PRIVATE TREATY

Closing 3:00pm, Wednesday 26 July 2023  
 at Level 3, 50 Kitchener Street, Auckland Central  
 (unless sold prior)

**CAM PATERSON**

**M** 021 451 666  
**E** c.paterson@barfoot.co.nz

barfoot.co.nz/90474

**BARFOOT & THOMPSON**  
 COMMERCIAL



*We care, pets, people, community*

Creatures great and small we care for them all

We are proud of the commitment our Vet Centre team have to our local community. Many customers are long term locals and, those newer to the area, we welcome you to meet our team. Our focus is caring for animals, looking after your pet or your livestock.

If there's one thing we're super proud of, it's that we've grown our clinics by opening in Ruakākā.

Give us a call or visit us for your animal care.



#### Maungaturoto

184 Hurdall St, Maungaturoto  
Phone 09 431 8318  
maungaturoto@thevetcentre.net.nz

**Opening Hours**  
Mon-Fri: 8.00am - 5.00pm

#### Ruawai

3 Jellicoe Rd, Ruawai  
Phone 09 439 2506  
ruawai@thevetcentre.net.nz

**Opening Hours**  
Mon-Fri: 8.00am - 5.00pm

#### Waipu

53 The Centre, Waipu  
Phone 09 432 0693  
waipu@thevetcentre.net.nz

**Opening Hours**  
Mon-Fri: 8.00am - 5.00pm  
Saturday: 9.00am - 12.30pm

#### Ruakākā

385 Marsden Point Road, Ruakākā  
Phone 09 433 4916  
ruakaka@thevetcentre.net.nz

**Opening Hours**  
Mon-Fri: 8.00am - 5.00pm

#### Mangawhai

36 Moir St, Mangawhai  
Phone 09 431 4535  
mangawhai@thevetcentre.net.nz

**Opening Hours**  
Mon-Fri: 8.00am - 5.00pm  
Saturday: 9.00am - 12.30pm



[www.thevetcentrenorthland.co.nz](http://www.thevetcentrenorthland.co.nz)

## Ruakākā Brigade top team at Northland Emergency Response Driver Competition



Ruakākā fire fighter Marama Ahomiro and Fire Chief Darrell Trigg at the Northland Emergency Response Driver Competition.

The empty streets of Marsden City were put to good use earlier this month when, on Saturday 8 July, 26 fire truck drivers from around Northland tested their skills against one another at the Emergency Response Driver Competition.

The drivers maneuvered the big trucks in and out of a line of cones and backed into parallel parks and tight corners.

Trent Jones of the Wellsford Fire Brigade was judged Northland's best emergency services vehicle driver, with Neil Matheson of the Kohukohu Brigade in second place. The combined scores of the Ruakākā Brigade's three entrants: Jason Tanner, Ricky Timms and Mark Robinson gave Ruakākā the top team award.

Marama Ahomiro of the Ruakākā Brigade helped to organise the event. She had arrived at the station at 6am that morning to help make lunch for all the competitors and was at the course along with Ruakākā Fire Chief Darrell Trigg, handing out umbrellas for all the judges and generally making sure the day went smoothly. Afterwards they all went back to the Ruakākā Fire Station for a debrief and some social time with members of the visiting brigades.

Marama joined the Ruakākā brigade after returning from Australia to her hometown of Ruakākā in 2020. Her training was held up for a while by Covid 19 restrictions but now she is fully involved.

"I love everything about it", she said.

She has attended events with other Northland female fire fighters and has got to know many of them.

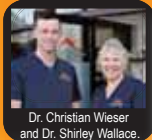
Next year she hopes to be one of the competing drivers.

"Isn't it every kid's dream to drive a fire truck?"

Last week Marama passed her Heavy Traffic Licence with flying colours and can now begin Emergency Response Driver training.



SKIN CANCER DOCTORS



**09 438 2188**

131 Lower Dent St, Whangārei  
admin@skincancerdoctors.co.nz  
skincancerdoctors.co.nz

We are a primary care skin cancer clinic located in the Whangārei Town Basin. We focus on the early diagnosis and effective treatment of skin cancer in a friendly and welcoming environment.

- ✓ Full Body Skin Checks
- ✓ Dermoscopy Analysis of Moles
- ✓ Surgical & Non-Surgical Treatment
- ✓ No Referrals Needed
- ✓ Southern Cross Affiliated Provider
- ✓ Accredited Skin Cancer Doctors with the Skin Cancer College of Australasia



Sell your property with **Tina Subritzky** & **save money!**

**Thats right...You now have a choice to pay less!**

- ✓ Free marketing package!
  - ✓ My fees are only **2% +GST**
- This means you save thousands of \$\$\$\$ when sold.

Contact me today for a professional & friendly service!  
Tina Subritzky - **A local for 40 years.**



★★★★★

**Tina Subritzky**

021 059 7285

tina.s@arizto.co.nz

Licensed Salesperson (REAA 2008)





# Police Report



## Police dog tracks down fugitive wanted on multiple charges

A 30-year-old Waitara man who is a regular visitor to Ruakākā fled from Police when they visited an address he was at on Bream Bay Drive, Ruakākā. A Police Dog handler was called in to help and the man was located at a nearby address. He was arrested and is remanded in custody. He faces charges of: assault with intent to injure, assault with a weapon, burglary, escaping custody, resisting arrest and willful damage.

## A trail of stolen cars

A vehicle was stolen from The Centre, Waipu on Saturday 1 July at around 8.45am. The vehicle's owner saw it being driven away and phoned the Police. Police located the vehicle on State Highway One at Ruakākā but abandoned the chase when it was driven away at speed. It was later recovered in Wellford alongside where another car had been stolen. A third stolen car, which had been taken earlier in the morning from Wellsford, was found abandoned in Waipu. Enquiries are ongoing with some good forensic leads.

## Eight family harm incidents

In the fortnight Friday 30 June to Friday 14 July Bream Bay Police dealt with eight family harm incidents.

## Potholes in our roads cause problems for Police

Potholes and slumps in our roads are causing problems for Bream Bay Police. Sergeant Simon Craig said Police cars are getting damaged with one patrol vehicle suffering five punctured tyres in the space of six days.

## Drink drivers

• A 29-year-old Kaiwaka man returned a breath/alcohol reading of 1,149 micrograms of alcohol per litre of breath (more than four times over the 250 microgram limit for people aged 20 years and over) when Police stopped the vehicle he was driving in Paparoa on Saturday 1 July at 4pm. He will be facing a drink driving charge in the Whangārei District Court.

• A 72-year-old Ruakākā man will be appearing in court on a drink driving charge after he was stopped by Police while driving on One Tree Point Rd. on Thursday 13 July at 8.30pm. He returned an alcohol/breath level reading of 665 micrograms of alcohol per litre of breath.

• A vehicle was stopped by Police on State Highway One at Mata on Saturday 8 July. Its 27-year-old driver was found to have a breath alcohol level of 400 micrograms of alcohol per litre of blood. He was issued with an infringement notice.

## Facebook scams

A number of Bream Bay people have made complaints to Police after paying for items advertised on Facebook Market Place, which were never delivered. Sergeant Simon Craig advises people not to hand over any money until they have seen the item they want to purchase.

## Suzuki Swift stolen from Marsden Point

A white Suzuki Swift with the number plate GMY381 was reported stolen from Papich Rd. in Marsden Point on Tuesday 11 July at 5pm.

## Ruakaka Stationery & Gifts



### Ruakaka Town Centre

Shop local for all your needs:

Stationery, Books, Toys, Magazines

Greeting Cards, Clothing,

Gifts & Souvenirs

**Phone**  
**432 8104**

New Zealand Post

**Open Saturday until 7pm.**

# Gilmore Taylor is now Bridge Advisory



Your forward-thinking team of accounting and business advisory specialists. **Support for your business journey.**

P 0800 102 173 / E [accounting@bridgeadvisory.co.nz](mailto:accounting@bridgeadvisory.co.nz) / [bridgeadvisory.co.nz](http://bridgeadvisory.co.nz)

**bridge**  
advisory

## Northpower

### Introducing our Electricity network's 2023 Asset Management Plan

Northpower has recently updated its Asset Management Plan (AMP), which sets out our approach to managing our electricity network assets and related expenditure over the next 10 years. Northpower's electricity network spans the Whangārei and Kaipara districts and connects the national electricity grid to our customers' homes and workplaces.

Our customers are also our owners, who have told us that what is most important to them is that we continue to deliver a safe, reliable, secure and cost-effective service that enables customer choice in the context of changing energy use and new technologies. Our AMP focuses on delivering these outcomes through renewing and growing our network assets and preparing for the future.

#### Our network



**23** electricity substations

**54,939** powerpoles

**5,210km** overhead lines

**1,446km** underground cables

**2035** solar connections on our network (11.4MW of generation)

Our region is one of the fastest growing in New Zealand, so we are growing with it

#### Whangārei District

Population 98,300

Increase **↑17.4%**  
(2013 to 2020)

#### Kaipara District

Population 22,200

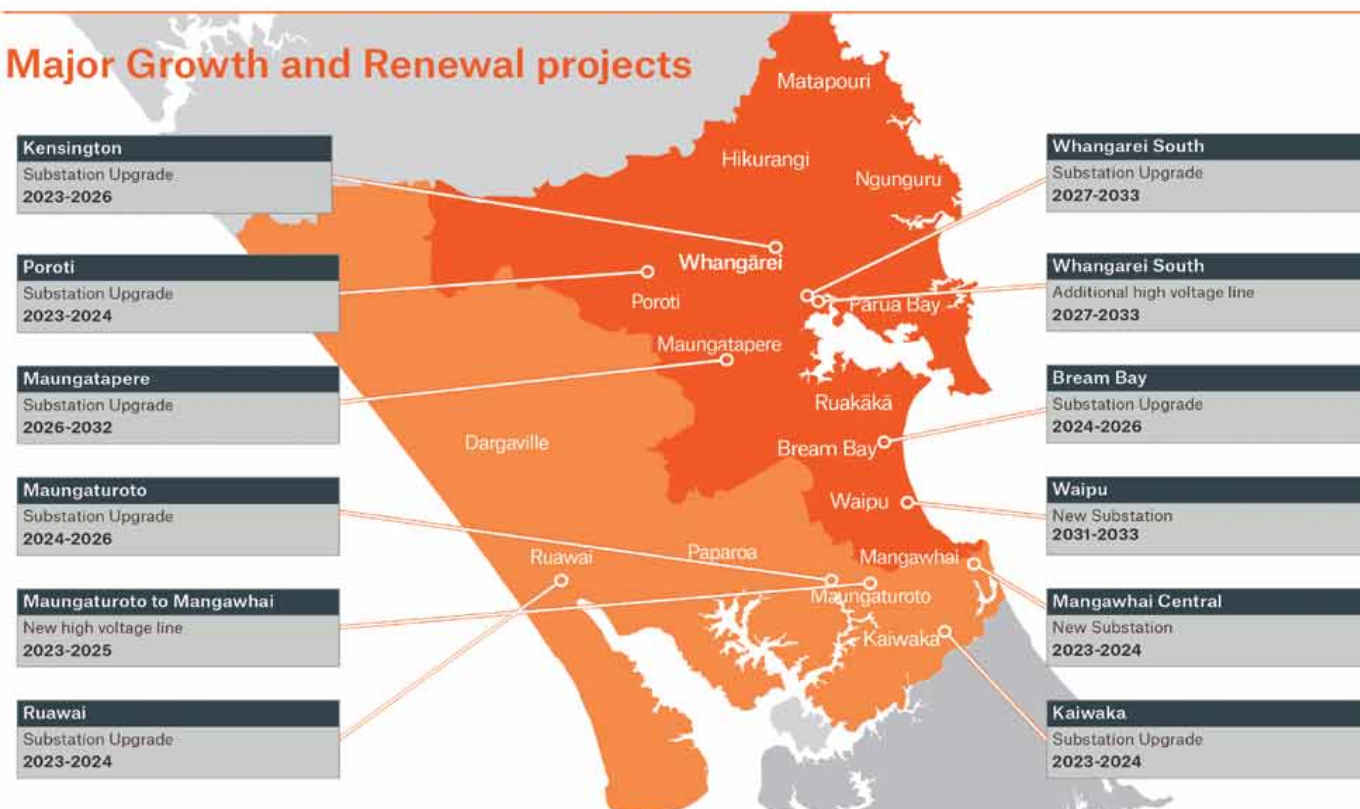
Increase **↑22.9%**  
(2013 to 2020)

### Population growth and population projections for Kaipara and Whangārei districts



Source: Whangārei District and Kaipara District Council Long Term Plans

### Major Growth and Renewal projects

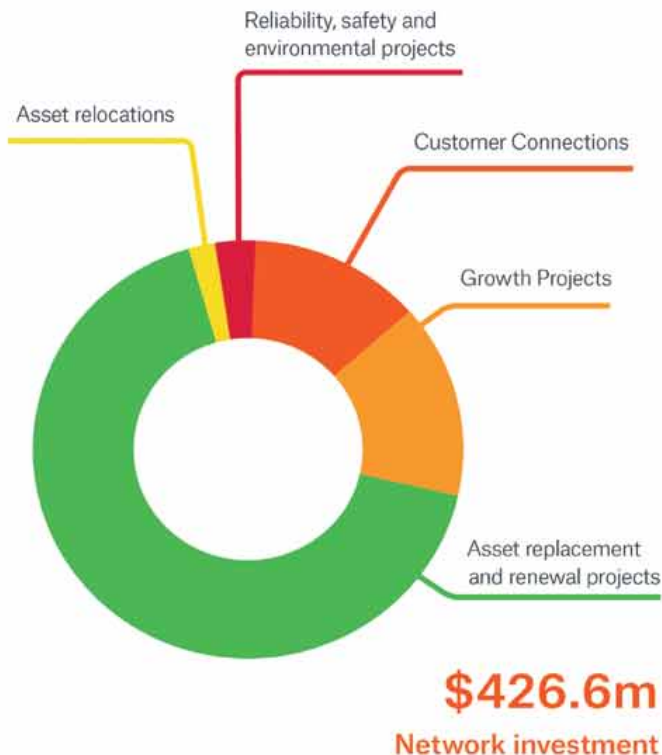




## Latest news &amp; updates from around our Network

## Delivering a Safe, Reliable and Secure Service

Our forecast investment spend over the next 10 years.



## Providing a cost effective service

Our focus is on providing a cost effective service – which requires continual improvements in the way we manage our assets. Managing long life assets safely and effectively involves a range of specialised and evolving capabilities.

We are investing in our people and their capabilities, as we believe strong asset management drives lower costs and better outcomes for our customers.

### Asset Renewals

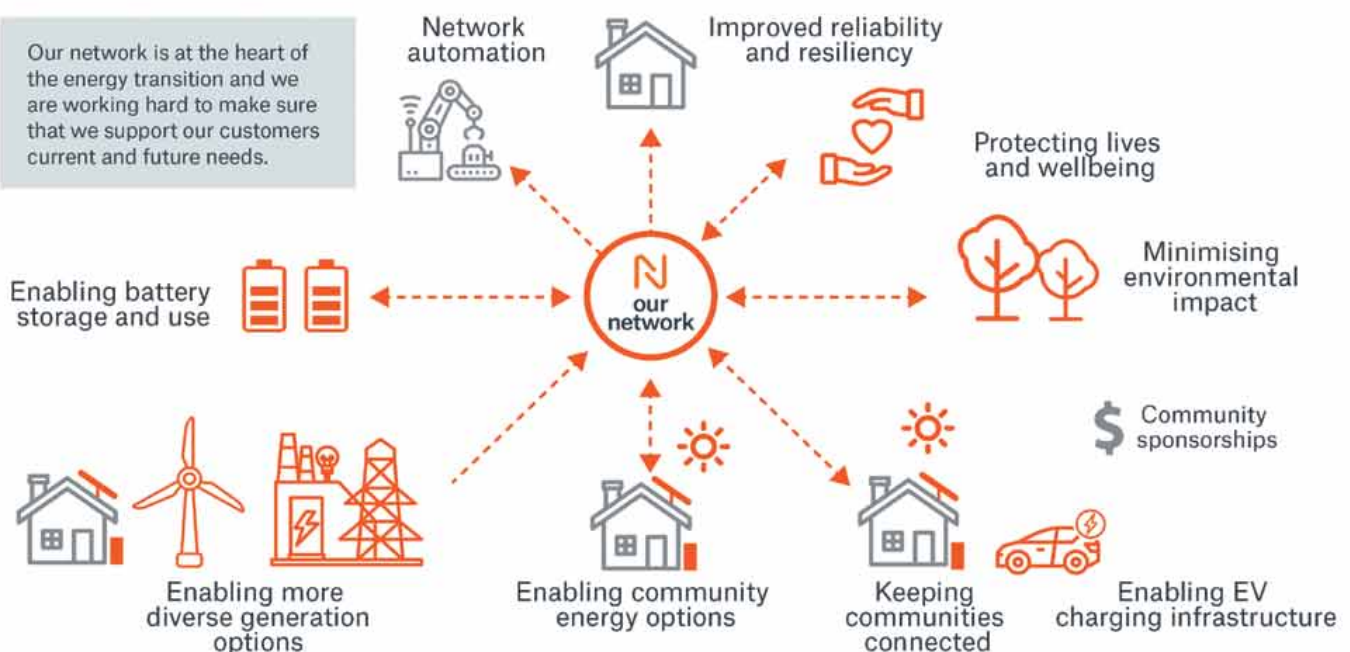
Work in recent years has helped us identify that we need to significantly increase spend over the next 10 years to replace aging and end of life assets, so the network continues to be safe and reliable. The majority of this spend is forecast on our overhead assets, like replacing poles, overhead lines and cross arms.

With an average spend of over \$25million a year over the next 10 years, this means you will see our lines crews out and about, working hard to keep our network in good condition. At times this may mean we need to turn the power off to do the work safely. Where this is required we will contact you in advance so that you can prepare for an outage.



## Supporting our people, our communities & their future

Our network is at the heart of the energy transition and we are working hard to make sure that we support our customers current and future needs.



**MARSDEN POINT HIGH TIDES**

	AM		PM	
Thu 20 July	9.13	2.4	9.36	2.6
Fri 21 July	9.52	2.4	10.13	2.5
Sat 22 July	10.30	2.4	10.50	2.5
Sun 23 July	11.10	2.4	11.28	2.5
Mon 24 July	11.51	2.3	~	~
Tue 25 July	12.08	2.5	12.35	1.3
Wed 26 July	12.51	2.4	1.22	2.3
Thu 27 July	1.36	2.4	2.16	2.3
Fri 28 July	2.27	2.4	3.14	2.3
Sat 29 July	3.23	2.4	4.15	2.4
Sun 30 July	4.23	2.4	5.16	2.5
Mon 31 July	5.23	2.5	6.14	2.6
Tue 1 August	6.27	2.5	7.10	2.7
Wed 2 August	7.26	2.6	8.03	2.8
Thu 3 August	8.22	2.7	8.55	2.9
Fri 4 August	9.16	2.8	9.46	2.9

**THE NEXT PUBLICATION DATE**

of the Bream Bay News will be Thursday 3 August

The deadline for all copy is 4pm on

Wednesday 26 July

**Remembering Waipu's Masonic Lodge**

Former Waipu Masonic Lodge Masters: Peter Copeman, Robert Webb, Greg McCracken, Ron McCracken and Brian McLean. Ron McCracken and Peter Copeman wear the collars of Grand Lodge Masters, as they are involved in the organization at a national level.

Some former Masters of the Waipu Masonic Lodge gathered in what was previously their lodge building to install a commemoration board in its foyer with photographs of some of its former Masters.

The Waipu Masonic Lodge was formed in 1911 and 200 plus local men from Waipu and Ruakākā are listed as belonging at one time or another.

The lodge purchased the original Waipu Hall built around 1870 and transported it on a sledge pulled by a bullock team to a new site on land in Nova Scotia Drive donated by William Connell, a lawyer from Whangārei.

At one stage of the route the sledge got stuck in the mud and had to be left where it was for several months

until the ground dried out sufficiently for it to be dragged to its new site.

Over the years Waipu Lodge members raised funds to support many local causes including providing scholarships for young people to further their education and providing equipment for early childhood centres such as the Marsden Playcentre.

In 2015 with its membership declining, the Lodge gifted the historic building to the Waipu Museum and a team of volunteers led by the late Peter Couper readied the old hall for another move, this time to its present position in the Historic Precinct behind the Waipu Museum. In recent years it has served as a base for the Waipu MenzShed.

One of the conditions of the gift of the building to the museum was that the commemorative board be installed in the building and the Waipu Masonic Lodge former Masters want to acknowledge the late Alison Phillips who as a member of the Waipu Museum Committee ensured that this promise was honoured.

**Thai Therapeutic Massage**  
in Ruakaka

Reduce Stress & Anxiety    Improves Circulation & Posture  
Improves flexibility    Enhances Mobility  
Ease Back Pain    Inner Peace, Joy & Self Awareness

Mai is a qualified Thai Massage Therapist with over 15 years experience. She is passionate about helping people move and feel better within themselves. Mai has helped a huge range of people from all over the world feel more comfortable and move more freely.

**Call Mai 021 0256 1928**  
Appointment Only

**Waipu Presbyterian Parish**

**Contacts:**  
Minister - Tom Waight - 432 0534  
Mainly Music - Sharon Smith - 432 1050  
Toy Library - Julie Malone - 432 0388  
Church Hall Hire - Cally James 432 1536  
Family Welfare & Foodbank:  
Co-ordinator - Helen Matheson - 432 0239  
Budgeting Advice - Bruce Matheson - 432 0239  
The Crossroads Trust (financial support) Peter Couper - 432 0524 or email lynettejones@xtra.co.nz

**Sunday Services**  
Ruakaka - Camellia Ave - 8.45am  
Waipu - 50 The Centre - 10.15am

**Working with you  
- for your Community**

**THE MAINTENANCE**  
www.themaintenance.co.nz

- ❖ Chemical and non-chemical house washing
- ❖ Window and house cleaning
- ❖ Painting and staining - exterior house, decking and fences
- ❖ Water blasting - decks, driveways and courtyards
- ❖ Clean guttering and downpipes
- ❖ Pest control and spider spraying
- ❖ Tree trimming with extension saw

**Phone now for a FREE QUOTE**  
REVITALISE ❖ PRESERVE ❖ PROLONG ❖ MAINTAIN

**TONY 021 196 2949 OR MELISA 021 075 6770**



# The Great Debate - Five years is long enough to become a Waipu local?

*Photos by Peter Davies*

The Great Debate, now a regular feature of the Waipu Winter Festival, went ahead in the Waipu Hotel on Wednesday evening 5 July with the moot: "Five years is long enough to become a Waipu local."

For the affirmative were: Jenni Carr, Lyndie Mullins and Bruce Larsen, who was team leader, and for the negative: Jill Mutch – team leader, Clark Pullan and John Isles.

Adjudicator was Peter Gibbs and Alana McCarthy was timekeeper.

Jill Mutch said Waipu is a Scottish country town where people pull together. It has a big heart and "people are not afraid of hard graft." She said the people who have lived here for a long time "have kept things going". Things like the Coronation Hall and the Caledonian Park. "Whenever I go to any function in Waipu who do I see in the kitchen doing the dishes – all the old timers."

John Isles – "Five years is just an apprenticeship. How can this measure up against five generations (in the case of the Nova Scotian settlers who founded the town) or 25 generations in the case of tangata whenua who have lived here for hundreds of years?" Clark Pullan – said he had attended the Waipu Primary School speech contest recently and Lachie McLean who presented the winners with prizes on behalf of the Waipu 150 committee had to be introduced to the audience.

"Any one who doesn't know who Lachie McLean is is not a Waipu local."

For the affirmative Bruce Larsen said it's not the amount of time you have lived here that matters. It's what you contribute to the community. He didn't agree that there should be two strata of society in Waipu – "the mythical beings the descendants and the rest of us non persons."

"If it wasn't for us newcomers to Waipu all that you would have in the main street would be "a few electric wheel chairs and tumble weeds" and "how would the descendants be able to sell off their forebears farms?"

Lyndie Mullins said as a real estate agent she had the pleasure of selling houses to many new Waipu families. These newcomers had children who attended Waipu Primary School and many competent adults willing to put time into local committees.

"Some times they got put off by the attitude of long time residents who told them

"This is how we do it because we have always done it this way."

Lyndie, who is also a Waipu volunteer fire fighter, regularly takes part in the Firefighters Sky Tower challenge where she wears her kilt because although not a descendant she feels she belongs to Waipu.

Jenni Carr asked how Waipu residents would get on if they had to depend just on people who had been here a long time. "Would they hesitate to call the fire brigade because many of the volunteers were not local? Would they turn down all the donations Northpine made to their various clubs because Bruce Larsen, the company's CEO is not a local?"

She said the shouting of supporters from the balcony of the Waipu Rugby clubrooms at games would be pretty muted if it were not for all the newcomers to the town joining in.

The affirmative Five years is long enough team was judged the winner and given a \$100 voucher by the Waipu Hotel. The members of the losing *Five years is not enough* team each received a chocolate fish.



Jenni Carr, speaking to the affirmative, asks how long time Waipu residents would survive without new arrivals in the town. Team members Lyndie Mullins and Bruce Larsen seem to appreciate her argument.



Beer and Bites at McLeod's Pizza Barn on Tuesday 11 July where McLeod's beers were matched with local artisan produce.

The Waipu Winter Festival continues this month with the Pets in Tartan Parade leaving from the Pizza Barn at 10am on Saturday 22 July and the Mid Winter Swim at midday Sunday 23 July at the Waipu Cove Surf Lifesaving Club.

We have Men in Kilts rugby with a Waipu veterans team up against Mid Western at the Caledonia Park

on Friday 28 July kicking off at 7.30pm.

The annual shortbread baking competition returns the following weekend on Sunday 30 July. Bring your entries to the Waipu Fire Station by 10am on Sunday 30 July. Prizegiving will be held at 3pm. Judging is in three categories: traditional, novelty and a children's section for shortbread bakers up to the age of 12 years.



## Weather kind for first day of Bream Bay Classic



Men's open winner Sheldon Kearns and Masters winner Brad Singer

The Waipu Golf Course course was closed over the weekend 8 and 9 July for the Waipu Club's hosting of its Northpine Bream Bay Classic.

Club manager Vic Martook said, "The weather was kinder than it has been in recent times but, with a strong, cold, south-westerly blowing some heavy squalls through on Sunday the course was a real challenge for some of the top amateur golfers in the country."

"All the competitors seemed to have a great weekend – despite what the weather threw at them."

Mr. Martook said the club's ground staff had put in a "fantastic effort" to get the course "into a far better playing condition than most of our visitors have been enjoying at their home clubs in recent times."

The big winners were:-

Men's Open: Sheldon Kearns (+2.6), Omana GC 72/76/70 218. Henry Wang (+1.4), Pakuranga GC 70/75/74 219 and Jamie Thomas (+0.2) Wellsford GC 75/73/72 220

Masters: Brad Winger (+0.3) Remuera GC 73/72/77 222, Scott Thrupp (+0.6)

Grange GC 74/73/81 228, Nathan Jacoby (0.9) Waipu GC 76/78/75 229

Women's Open: Caitlin Maurice (+2.3) Akarana GC 76/76/78 230, Chloe So (+0.3) Pakuranga GC 75/74/85 234, Vaha Fapiano (1.6) North Shore GC 79/78/83 240

## WHAT'S ON IN BREAM BAY

- **PET PARADE Saturday 22 July** Leaves from outside the Waipu Pizza Barn at 10am. Waipu Winter Festival event
- **BOOT SCOOTERS LINE DANCING SOCIAL Saturday 22 July** There will be line dancing, raffles and prizes in the Ruakākā Hall from 10am to 2.30pm. Entry fee is \$5. All welcome.
- **FREE ADMISSION AT THE KAURI MUSEUM.** The Kauri Museum is offering free admission for everyone to celebrate the opening of its new redevelopment on the weekend of July 22-23. Redevelopment over the past two years has seen the construction of a new entrance with a 'forest walkway', refurbished café, research centre and display areas. The Kauri Museum is open 9am-5pm every day except Christmas Day. 5 Church St., Matakōhe. Opening Hours: 9am-5pm See more at [www.kaurimuseum.com](http://www.kaurimuseum.com)
- **PAPAROA ARTISAN MARKET** Next on Sunday 23 July from 12 noon to 3pm. In the Paparoa Memorial Hall
- **MID WINTER SWIM Sunday 23 July** from midday - 12 noon at the Waipu Surf Life Saving Club. Waipu Winter Festival event
- **COMMUNITY BINGO Wednesday 26 July** Waipu Citizens and Services club Calling starts 7.30 pm . 17 games includes two Jackpots Open licence All welcome
- **MEN IN KILTS RUGBY** Waipu vs Mid Western at Caledonia Park on Friday 28 July kicking off at 7.30pm.
- **SHORTBREAD COMPETITION 30 July.** Bring entries to the Waipu Fire Station at 10am. Judging and prizes at 3pm. Three categories: traditional, novelty and children under 12 years.
- **RUAKAKA RACES Next on Saturday 5 August.** Mid Winter Christmas at the Races. Free entry. 11am -5pm. The Ruakākā racecourse is located at the end of Peter Snell Drive
- **WAIPU LIONS MID WINTER SENIOR CITIZENS LUNCH Saturday 5 August** in the Coronation Hall Doors open at 12 noon, Ph. 027 265 3227 to book your place
- **WAIPU BOUTIQUE SUNDAY MARKET** Next on Sunday 13 August. From 9am to 1pm in the Coronation Hall
- **ONE TREE POINT ARTISAN MARKET** Next on Sunday 20 August Fund-raising for Whangārei Hospital Children's Ward. Sunday 18 June from 9am-1pm. One Tree Point School field.
- **WAIPU MUSEUM 36, The Centre, Waipu.** Open seven days 10am- 4pm .

## Takahiwai under 18s Northland champions

The Takahiwai League Club's under 18s are Northland Champions having beaten Moerewa 24-20 in a close match played as a curtain raiser for the Premier Final at Semenoff Stadium on Saturday morning 8 July.

### Love being active?

## 24/7 gym

**9 Takutai Place Ruakaka Ph: 432 7962**

- no lock in contract,
- no admin, no joining fee
- \$10 per week
- Ladies only gym
- Unisex gym
- Casual gym \$2 per day

**Opening hours :**  
Mon, Tues, Wed, Fri 5am to 2pm  
Thur 3am to 6pm

### Come and join us at the Ruakaka Recreation Centre

**Lounge available for hire - up to 134 people**  
**Meeting room for hire - up to 15 people**  
**For events kitchen facility available**

**Very reasonable rates**

Activity	Day and Time	Cost	Contact
Light Circuit Fitness class	Monday 10am to 11am	\$4	AnnMarie 0211693115
Light Circuit Fitness class	Wednesday 11am to 12pm	\$4	AnnMarie 0211693115
Preschool gymnastic classes	Tuesday 10.45am-11.30am, 11.45am-12.45pm	\$15 per session	Nadine 029 776 7754
Preschool gymnastic classes	Thursday 2pm - 2.45pm	\$15 per session	Nadine 029 776 7754
Recreational gymnastics	Thursday 3pm - 3.45pm, 4pm-4.45pm for primary age	\$15 per session	Nadine 029 776 7754
Comp Rec gymnastics	Thursday 4.45pm - 6pm	\$20 per session	Nadine 029 776 7754
Zumba Gold	Tuesday 9am to 9.45 am	\$7	Roz.rozhumba@gmail.com
Zumba Gold	Thursday 9.30am to 10.15am	\$7	Roz.rozhumba@gmail.com
Stretching classes	Thursdays 11am to 12pm	\$5	Liu 4328941
60's up	4th Friday of month 10am to 4pm	\$12 annually fee	Joy 021491887
petanque or indoor bowling	Wednesday 1pm to 4pm		Sue 021850286
Music club	1st Monday of month 7pm to 10pm	\$5	Fulco 0274718428
Beginner adult dance classes	Wednesday 7pm - 8pm, 6 weeks - 6 styles	\$10 or all 6 for \$55	Ellie 027 381 4077
Zumba	Monday 8.45am to 9.45am	\$8	Janine 021437840
Zumba	Wednesday 5.45pm to 6.45pm	\$8	Janine 021437840
Zumba	Friday 4.45pm to 5.45pm	\$8	Janine 021437840
group fitness for women	Monday and Friday 11am to 12pm	\$8 or 2 classes \$15	Erin 0224018626
casual gym	Monday to Friday 8am to 2pm	\$2 per day	Christine 4327962
casual Squash	Monday to Friday 8am to 1pm	\$5 per hour	Christine 4327962

We are also home to Bream Bay Squash club and Bream Bay United Association Football club



## Unused sports gear drop off in Waipu

Have you got some sports gear that's just hanging around taking up space at home or the bach? From sports shoes, tennis rackets, surfboards, bikes, cricket gear... anything sporty that could be loved and used by someone else in need? A big blue container or donations pātaka has been placed in the window of the Harcourts shop in Waipu by the ReSport Charitable Trust. A pātaka is a storehouse or collection area.

At Harcourts Waipu we've teamed up with

ReSport Charitable Trust to be a donation point for pre-loved (or new) sports goods in Northland! There is a shiny blue container in the window of the Harcourts shop, this is a donation pātaka. It's called a pātaka, rather than a bin. A pātaka is a storehouse or collection area, so it fits nicely!

ReSport makes sure the donated sports goods go to sports groups, communities, and organisations in need, enabling more Northlanders to be active and to participate in play, physical activity, and sport, by providing sports gear that would otherwise not be

obtainable e.g. rugby boots, protective gear, a surfboard, golf clubs, or a hockey stick and ball, etc.

They can collect large bulky items too – someone even donated a jetski! If sports goods they receive are not quite fit for purpose, they will arrange for them to be recycled. If you don't have sports gear that you'd like to donate, but would still like to contribute, ReSport also accepts monetary donations, for this, please visit their website: [www.resport.co.nz](http://www.resport.co.nz)



From left to right – Monique Wheat, Lyndie Mullins, Judy Guy, and Archer Wilson, and the blue ReSport pātaka.

## Op shop raffle for food banks

The Waipu Op Shop is running a winter raffle to raise funds to support the Anglican Foodbank in Ruakākā.

Op Shop Committee Chairwoman Sue Hancock said, "We feel people are doing it tough and the food banks are being called upon to help.

A number of local businesses have contributed to two prize packages each comprising a number of vouchers, pamper products and a collection of winter warmers such as woollen blankets, hats, scarves, hot water bottles and soft toys. .

"If a grandmother were to win one of these she could share these goodies amongst all her grandchildren. There would be something for everyone," said Sally Haigh the raffle organizer.

Tickets, at \$2 each or \$5 for three, are on sale at the Op Shop and, between showers, Sally will be holding stalls at the Waipu and Ruakākā Shops.

She said, while the Ruakākā foodbank gets lots of donations of tinned goods and other non perishables there is always a need for cash to enable the purchase of fresh fruit and vegetables, meat, eggs and dairy products to add to food boxes. With the number of requests for boxes increasing more funds are needed.

The raffle sponsors are: Waipu - 4-Square, Waipu Pharmacy, Massage-on-Brooks., Harker Herbals, G.A.S. Waipu, Waipu Butchery, Orr's Pharmacy Ruakākā and Millers Meats.

"They have all been generous in their sponsorship, recognising the hardship many people are experiencing with the constant rising of their household costs," said Sue. The Op Shop will also be making a donation to the Waipu Foodbank which is run by the Presbyterian Church.

## Shortbread competition back on the agenda

By popular demand the shortbread competition has been added to the list of Waipu Winter Festival events. The Waipu Fire Brigade runs the annual competition with judging by Waipu Fire Brigade personal.

Bring your shortbread entries to the fire station at 10am on Sunday 30 July.

Entries will be judged in three categories: traditional, novelty and kids (under 12 years of age).The judges' decision will be given at 3pm.

### WAIPU LOTTO & POST



Lotto  
Postshop  
Photocopying

Emailing  
Newsagents  
All stationery needs



The Centre, Waipu

Phone 432 0900

## TRADES & SERVICE DIRECTORY Ph 09 432 0209

### Bream Bay Tax

Tax  
Accounting  
Business support

Free first consult.  
Fixed price packages  
Supporting Bream Bay businesses

Robb MacKinlay 027 540 7859  
robb@breambaytax.nz www.breambaytax.nz



BARFOOT THOMPSON &  
Lifestyle Sales / AREINZ

I Love Selling Bream Bay!

Angelique Hartnett  
Coastal & Lifestyle Sales / AREINZ  
0274 356 411 / 09 435 5914 P  
a.hartnett@barfoot.co.nz E

### WhiteWash

Low pressure house cleaning

- Pest control
- Window cleaning
- Roof cleaning
- Gutter cleaning

Murray White

027 452 2430

murray.whitewash@gmail.com

Spa & Pool chemical sales  
Free water test  
Valet service available



Poolside Marsden Cove

Spa pool  
Displays  
In store now



16 Waiwarawara Drive  
Ph. 09 393 7755

Davey  
Water Pumps  
Sales and Service



www.poolsidemarsdencove.co.nz

# TRADES & SERVICE DIRECTORY

Ph 09 432 0209

**NORM FAGO**  
OWNER / OPERATOR

**Act Now**  
**Car Rentals**

M: 0274 362 480  
Nz Freephone: 0800 362 480  
E: info@actnowrentals.co.nz

**From \$45 per day - Min 4 days**  
Based in Ruakākā

**Ph: 09 432 0123**

**BREAM BAY GLASS**

FOR ALL YOUR GLASS NEEDS



**Mob: 0274954548**

**AMC**  
AUTO MOBILE GLASS

**FAST WINDSCREEN REPLACEMENTS & CHIP REPAIRS**

- Mobile service or come to our workshop
- Ultra competitive pricing. • Insurance claims welcome.
- Windscreen replacement in under an hour.

**Phone Conrad on 022 036 2916**  
2/17 Gumdigger place.

**BRADLEY**  
**EARTHWORKS**

- POND CLEANING • DRIVEWAYS • RACEWAYS
- LAND CLEARING • TREE REMOVAL • ROADING AND MORE!

**CALL ME TODAY FOR ALL YOUR EARTH & TREE WORKS**  
**PHONE ROY 027 374 5090 WAIPU**

**ABSOLUTE CONCRETE**

[www.absoluteconcrete.co.nz](http://www.absoluteconcrete.co.nz)  
CULVERT PIPES  
Spun and reinforced  
Crane truck delivery  
Drainage Merchant - Hardware Store  
Email: sales@absoluteconcrete.co.nz  
Phone (09) 431 2211  
KAIWAKA

**MACSWAY**  
**SCAFFOLDING LTD**

WE BUILD, HIRE, ALLOY MOBILES, TEMPORARY FENCING, & SHRINKWRAP

Ph: 09 432 7643 • 0274 726 772  
macsway@xtra.co.nz Kepa Road, Ruakaka

**O'MALLEY CONTRACTING LTD | CONCRETE SPECIALISTS**

- FOUNDATIONS
- HOUSE SLABS | STAIRS
- RETAINING WALLS
- DRIVEWAYS | CARPARKS
- EXPOSED AGGREGATE
- COLOURED CONCRETE
- COMMERCIAL | RESIDENTIAL
- LICENCED BUILDING PRACTITIONER

Free No Obligation Quote

FAMILY OWNED & OPERATED

021 2200 198 | [OMALLEYCONTRACTING.COM](http://OMALLEYCONTRACTING.COM)

**Bream Bay Concrete Ltd.**

Free Quotes • Reliable Service • Quality workmanship

- Concrete pads
- Shed floors
- Pathways
- Home floors
- Driveways
- Concrete cutting
- Excavation works
- Retaining walls
- Paving fences
- Profiles for homes & sheds
- Subfloors & boxing

**Mark Royals Ph: 432 0107 Mob: 0274 433 130**

**BREAM BAY ELECTRICAL**

Wiring Safe Homes And Businesses Throughout Northland

RESIDENTIAL COMMERCIAL INDUSTRIAL

0800 223 555 • 027 35 33 555  
[www.breambayelectrical.co.nz](http://www.breambayelectrical.co.nz)

24H SERVICE


**BAYSIDE CONTRACTORS**

RESIDENTIAL EARTHWORKS • HOUSE SITES  
DRIVEWAYS • TRENCHING & DRILLING

Contact Shane  
027 3019 480  
[admin@baysidecontractors.co.nz](mailto:admin@baysidecontractors.co.nz)

**TC ENGINEERING**  
Metalwork Specialists

Stainless and Aluminium Welding and Bespoke Fabrication

Gates and outdoor furniture. Marine repairs and fabrication.  
Onsite welding for farm repairs and modifications.  
[www.tcengineering.nz](http://www.tcengineering.nz) 021 145 7075 or 021 203 0309

**Tractor Mulching**

100hp tractor with high bodied yllails, mulcher, park finishing mowers, slashing  
Gorse & blackberry spraying

Also mechanical tractor repairs

Phone Bain McGregor  
0274 979 013  
or 09 432 0527



**Grant McLean**  
Stock Agent for Bream Bay

Ph 021 7758 48  
Email: [skincarla@xtra.co.nz](mailto:skincarla@xtra.co.nz)

All aspects of stock sales including:  
• dairy beef • bobby calves • store cattle • live export heifers  
• sheep • pigs • supplying stock for slaughter

Also caters for small block holders.

**Carrfields** **Livestock**

**Ruakaka Motors**

Mechanical and Auto Electrical Repairs and Servicing

**mta**  
Monday - Friday 7.30am - 5pm

Tyres and Batteries  
Warrant of Fitness testing  
**Phone 432 7233**

**PARADISE QUARRY**

**PARADISE QUARRY STONEMASONS**

Specialists in stunning stone for landscape  
Suppliers & installers of northland's own schist for all your stonemasonry & landscaping Requirements

(09) 432 2722 or GEOFF (021) 972 139  
[www.paradisequarry.com](http://www.paradisequarry.com)

**Susan, the Painter**

Phone for a free quote



**Ph. 027 370 5339**

**BLIND PRO**

Blinds • Awnings • Shutters

Indoor blinds and outdoor screens

Call us today for a free, no obligation consultation and quote

ph 09 423 9661  
website [www.blindpro.co.nz](http://www.blindpro.co.nz)  
email [info@blindpro.co.nz](mailto:info@blindpro.co.nz)

**McQUINN PUMPS**

How's Business? ... It's Pumping!

24/7 SALES, SERVICE & INSTALLATION | PUMPS & WATER TREATMENT  
PHONE SUPPORT AVAILABLE

**8000 627 846**  
PHONE FREE

**NOW AT 72 KIOREROA ROAD**  
—ALONG FROM RD1 & ITM

## Deadline for next issue - Wednesday 26 July



# TRADES & SERVICE DIRECTORY

Ph 09 432 0209



## DRAINAGE:

\* Septic Systems \* Water Tanks \* Truck & Digger Hire \*  
\* Subdivisions \* Domestic \* Commercial \*  
Certifying Drainlayers

Licensed Contractor for  
Waste & Drainage Work



## EARTHWORKS:

\* Subdivisions \*  
\* Farm Work: Effluent Pond Design & Build, Dams, Races \*  
\* House Sites \* Driveway Prep \* Lawns \* Roading \*

P. 09 432-7877 M. 027-432-7877  
E. karl@hansende.co.nz

**Team James Alexander**

JAMES ALEXANDER 021 878 178  
SALESPERSON & AUCTIONEER

ASHLEIGH LOUISE 027 733 5703  
SALES ASSOCIATE

Licensed Salesperson: The Real Estate Shop Limited (Licensed (REAA 2008))

## Diggermate

OPERATING AND HIRE

CALL GEORGE

027 214 5501

## Small Building Jobs & Repairs

- Letterboxes • Curtains • Smoke alarms,
- Clothesline • Decks • Fences,
- Kitchen and bathroom repairs
- Rental property maintenance

Call Tony on 021 196 2949



**Brian the Painter**  
Decorator, Restorer, Handyman  
Property Maintenance

No job too small,  
No travelling time charges  
Free advice

Phone 0274 882371 or 09 431 4882  
Email: hollis@hotmail.co.nz



**Long Run Roofing & Cladding**  
Re-roofing & Spouting  
Edge Protection

**Terry Mounsey**  
021 562 269  
wetaroofting@xtra.co.nz

**RELIABLE & PROFESSIONAL SERVICE**

**STORAGE BREMBAY**  
76 Waiwarawara Drive, Ruakaka

storagebreambay@gmail.com  
021 432 701  
(09) 432 77 32

www.storagebreambay.co.nz

## LOW COST DRIVEWAYS & SURFACING NEEDS

Concrete or asphalt beyond your budget ...

We have the next best solution for a  
fraction of the price.

Call for a quote, you'll be pleased you did!  
Paradise Quarry Contractors

Geoff (021) 972 139 or (09) 432 2722  
For contractors who 'think' ...

## NORTHLAND CLEANING SOLUTIONS

We have the solution for your needs



- Commercial/Domestic Cleaning
- Builders/Construction cleaning
- Carpet/Upholstery Cleaning
- Carpet Reairs/Laying
- Flood Restoration
- Property Maintenance Solutions & More.

Rochelle & Jason Brownlie  
Mbl: 021 155 0319 Email: rochelle@ncsl.nz  
Website www.northlandcleaningsolutions.nz



Panelbeating and Spraypainting  
Caravan and Motorhome Repairs  
Tyres New and Secondhand  
Punctures

470 Marsden Point Rd, Ruakaka  
Call 09 4330313 24 Hrs or Bert 021 983 724

## M.V.B. Electrical Ltd.

Working in Bream Bay since 1977

Repairs • Installations • Advice

Mike van Blommestein

Phone: 09 432 1015 • Mobile: 0274 783 749  
Email: mikevanb@xtra.co.nz

## BLINDS SHUTTERS & CURTAINS

Bream Bay Whangarei & Districts

Rollers, Venetians, Verticals  
Shutters, Curtains & Outdoor Blinds



Ask about our DISCOUNT for households

Free in-home measure & quote  
Free Installation

Phone Gail 0211 95 35 35

www.blindsandshutters.co.nz

## GRAEME BINT FENCING

GOOD RATES, NO JOB TOO SMALL

09 432-1599 or  
027-292-2833

grbint@xtra.co.nz

## BREAM BAY ACCOMMODATION

**RUAKAKA**

STUDIO - HOLIDAY HOMES - B&B

BOOK ONLINE OR PHONE

Ph: 09 432 7025 Mob: 021 2722 739

website for online bookings: www.breambayaccommodation.com

## MANGAWHAI SMALL ENGINES

Grasshopper, Husqvarna and Honda dealer



194 Molesworth Drive, Mangawhai  
Ph: 09 431 5270 or Mb: 021 655 481  
Email: msengines@xtra.co.nz

## LAWSON CARTAGE

FOR ALL YOUR

EARTHWORKS & CARTAGE NEEDS

Suppliers of: topsoil, compost, woodchip,  
bark, sand, pebble, rocks and firewood.

Ph/Fax 09 432 8418 or 021 768 940

458 Marsden Point Rd. PO Box 142, Ruakaka 0151  
email: lawsoncartage@xtra.co.nz

**BREAM BAY NEWS PHONE 09 432 0209**

Email: breambaynews@xtra.co.nz

Post copy to : Bream Bay News, RD 2, Waipu

Email: breambaynews@xtra.co.nz

or leave it at the Waipu or Ruakaka Post and Lotto Shops

**FOR SALE**

**HAY** Conventional bales and baleage. Top quality. Phone 027 432 0351.

**FIREWOOD.** Gum \$125, pine \$85 per m3. A delivery fee may apply. Phone 027 55 88 151.

## WATER TANKS

09 431 2211

sales@absoluteconcrete.co.nz

**WORMS FOR SALE**  
For worm farms  
Phone 432 0209  
or text 027 432 0070

**RAWLEIGH'S PRODUCTS** Independent dealer. Ointments back in stock. Phone Susan McRae 027 227 2291.

Scooters Plywood  
3mtr Scaffold Planks \$77  
12mm H3.2 NS  
Plywood \$79.00  
Ph 438 6565

**BUSINESS FOR SALE****THE BREAM BAY NEWS IS FOR SALE**

Is there anybody out there interested in taking over the running of this great little community newspaper .

I have owned and run this business for the past seventeen years and am looking for someone who will run the paper with a genuine desire to provide good useful information to the Bream Bay Community as I have tried to do.

There are excellent growth opportunities. Running the Bream Bay News is hard work but very rewarding. I would be happy to spend several months teaching a new operator how our newspaper production works.

Will sell at a good price to the right person. Phone or text Marilyn - 027432 0070

Or email: breambaynews@xtra.co.nz

**WELL BEING**

**THERAPY FOR MENTAL AND PHYSICAL WELL-BEING.** Practical solutions for anxiety depression or personal growth. Affordable and effective. Melinda 021919898

**WANTED**

**VEHICLES WANTED.** Top cash paid For any VANS, UTES, TRUCKS, 4X4, Dead or Alive, damaged, de-registered Mechanical problem, no WOF we buy it. Call 0800 333 398

**OLD NEWSPAPER** Copies of the Bream Bay News, Advocate, Herald, Leader, Weekend Lifestyler, or Mangawhai Focus for recycling as erosion control. Waipu Lions fundraiser. Phone Dave Bell 09 432 0861.

**CLASSIFIED ADVERTISING**

Costs \$5.50 for up to 20 words and 20c for each additional word.

Boxed, classified adverts cost \$16.50 gst inc.

Phone your advert through to 432 -0209

email it to breambaynews@xtra.co.nz

Post to: Bream Bay News, RD 2 Waipu 0582

or leave it with payment at The Waipu Post Shop or the Ruakākā Gift and Lotto Shop

**SERVICES OFFERED**

## NORTH LAND HEADSTONES

Located in One Tree Point  
Your Local Headstone Showroom  
Call 0800 707 800  
www.northlandheadstones.co.nz



**Tree Removal**  
✓ Pruning  
✓ Chipping  
✓ Stump grinding  
Qualified & Insured  
Ph Scott (0800) 468-9663  
Arborcare Tree Maintenance

**PHOTOGRAPHER AVAILABLE.** Waipu, Commercial, real estate, weddings, documentary, aerial, drones, events. Ph: 021 139 2553. EIGHTYTHREEPHOTO.COM

### Waipu Boarding Cattery

Excellent care and accommodation  
Ph Sue 432 0394



**GLENMOOR WATER CARE**  
WATER TANK CLEANING  
No need to empty your tank  
• Vacuum or full scrub  
Phone Mark Draper 0274 707 607

### JD LAWN CARE SERVICES

PH. 021 063 7907

Lawn mowing, Weed spraying, Water blasting, surface cleaning of driveways, paths and patios, Hedge trimming, Section clearing, tree pruning, wood chipping and more.

**SOCIAL SERVICES**

LINKING HANDS  
Health Shuttle  
Phone (09) 431 8969



### BREAM BAY ANGLICAN FOODBANK

If you would like assistance or know someone that does, perhaps we can help  
Please phone Janet 433 0045  
Or Anoek 021 141 3409

**SOCIAL SERVICES**

### Safeman Safe family Men's Centre

Safeman Safefamily offers a safe place for men to talk privately without judgement and with complete confidentiality.

We are peer led and professionally supported and offer a range of services and support for men and their families.

The services we provide are as follows:

- Advocacy Navigator
- Court support
- FGC Support
- Probation Community Service Provider
- Legal Advice
- Marriage Celebrant
- House and property blessing
- One to one counselling
- Drug and Alcohol support
- Anger management group sessions
- Supervisor for court ordered access
- Work brokers/ help with employment opportunities.

No appointments are necessary, we have an open door policeu - if you need help or know someone that does just come on down to: **9 Takutai Place, Ruakākā.** We are right next door to Jimmy's Barber Shop or I can be reached by phone 021 121 0763 - Phil Paikea

### Bream Bay Community Support Trust



Takutai Place, Ruakaka Phone: 09 432 7197

#### Services we provide:

- Registered Social Workers
- Family Support Workers
- Youth Workers
- Youth Hangout Space (watch this space...)
- Community Connectors (Connecting community to various services)
- Driver Mentor Programme
- Free Whanau Ora Medical Clinic with Ki A Ora Ngatiwai. Wednesday mornings 10am-12noon, by appointment only phone 09 435 4586
- Free Budgeting Service – Tuesdays 10am-12pm by appointment
- Mana Wahine – Wahine Toa, women's group
- Ha Tane – men's group
- Listening Ear – need to talk? Mon-Fri 9am-4pm no appointments necessary, cuppa and a listening ear available

**Waitata Sessions** 12:30pm every Wednesday, in our hall, come along for a sing along in collaboration with Whangārei Salvation Army.

**Community Connections** 10:30am-12pm every Friday in our hall. Hot soup and cuppa available. The purpose of these sessions is for the community to get together and partake in different activities together, getting to know one another, sharing talents/hobbies/passions creating connections in the community, building friendships. The session topics are driven by the interests of participants. Coming up: Friday 9th June – Rongoa – Kawakawa Balm Workshop  
Friday 16th June – Indoor Bowls  
Friday 23rd June – Ukulele Learners Group

Follow us on social media – facebook and Instagram for updates on what's happening here during the week

**THE NEXT PUBLICATION DATE**

of the Bream Bay News will be Thursday 3 August  
The deadline for all copy is 4pm on  
Wednesday 26 July



## PUBLIC NOTICES

The Waipu Riding Residents  
and Ratepayers Association  
AGM  
Wednesday July 26 at 7pm.  
In St Peters Church Nova Scotia Drive.  
Guest speaker: Wendy Faulkner of  
Bream Bay St. John

## JUSTICES OF THE PEACE



## Justices of the Peace

## Ruakākā

Paea Paki 09 432 8262/021 149 1625  
Darrell Trigg 09 432 7256/021 332 901  
Ken Orr 09 432 8215  
JM Archibald 021 227 4355  
Wayne Buckland 09 432 8226  
Ext 703

## One Tree Point

Jules Flight 0274 777 210  
Sir John Goulter 021 612 442  
MM Jolley 027 415 9486  
Ian Bogue 0274 300 418  
Grant Brown 027 248 7126

## Waipu

Trevor Vaile 09 432 0400  
Mr. D.A. Scott 027 229 9752  
Ken Couper 027 292 0524  
Angela Stolerwerk 021 823 966  
Jackie Fulton 09 9299200/ 0210 2567355

Make contact with a Justice of the Peace  
(on any day) and make an appointment to have  
your documents completed.

## CLASSES



CLAIRE NICHOLLS ART  
ART & WORKSHOPS

- Kids after school art classes
- Casual drop in clay
- Adult clay classes
- NZ sculptures for sale or commission

021 272 2294 | claire@sculpturenz.com | sculpturenz.com

Marsden Bay  
Garden Club

Monthly Meetings held  
3<sup>rd</sup> Thursday of the  
month.

## ALL WELCOME

1:00 pm – Ruakākā Hall  
– Sandford Rd  
Contact – Secretary –  
0210515581

## AGM

MenzShed Waipu Inc.  
10am Tuesday 15  
August 2023  
At the MenzShed  
Building  
Waipu Heritage  
Precinct  
41 Halifax Drive.



## Bream Bay Medical Centre Ltd.

## Ruakākā Town Centre, Ruakākā

Monday - Friday: 8.30am - 5pm

Saturdays: 9am - 12pm

Marsden Cove Medical Centre  
1A Ngawaka Lane, One Tree Point

Monday - Friday: 8.30am - 5pm

Please advise at time of booking  
if you require an extended consultation

We will be closed from 3pm - 5pm  
on Thursday 20 July 2023 for staff training.

Ph: 432 8060

New patients welcome



Bream Bay  
Coastal Care  
Trust

## Annual General Meeting

Guest speaker: Steve Johnson  
Talking about the work he is involved in with  
Te Pou Taiao  
for Patuharakeke Te Iwi Trust Board

At 2pm on Sunday 30 June  
Upstairs at the  
Ruakākā Recreation Centre  
Followed by discussion over afternoon tea  
All welcome

## MARKETS

Artisan Market  
Paparoa

SUNDAY JULY 23

11am—3pm

Paparoa Memorial Hall  
Local Crafts, Food, Live Music

artisanmarket.paparoa@gmail.com

OTP  
ARTISAN MARKET

Fundraiser for Whangarei Hospital  
Children's Ward  
Third Sunday every month

Spaces available PH 021 530 153



## Waipu Beekeepers Assn - AGM

Date: Wednesday 26th of July 2023 at 7pm  
Place: Porthouse Bar & Eatery  
163 Port Marsden Highway Ruakaka  
RSVP to waipubeekeepers@gmail.com

Marsden Cove Fishing Club  
AGM

Sunday 6th August 2023  
@ 2:30pm

at the Fishing Club Rauiri Drive  
Marsden Cove

RSVP to  
marsdencovefishingclub@gmail.com  
or 021 744 594  
by Friday 28th July .

BREAM BAY SUNDAY  
CHURCH SERVICES

Presbyterian Camellia Ave, Ruakaka:  
8.45am. The Centre, Waipu: 10.15am.  
Prayer Service: 7pm

Encounter 223 Marsden Pt. Rd,  
Ruakaka, 10am.

Anglican 1st and 3rd Sundays - St Paul's  
Ruakaka 2nd and 4th Sundays -  
St Peter's Waipu. All services start at  
9.30am.

Catholic Holy Family Church,  
Ruakaka, 10.30am. Mass or Liturgy of  
the Word

Lifepoint. 300 OTP Rd, 10.30am.



## FIND TECHNOLOGY FRUSTRATING

Don't let technology hold you back!!  
SeniorNet Bream Bay can help you with  
Apple, Android and Microsoft. Desktops,  
Laptops, Phones, Tablets & Cameras.  
We are volunteers, tutors are available to  
help you learn to use your device  
in easy steps.

Bookings essential, please contact:  
Learning Centre: 09 432 7692  
(leave a message)

Or email - seniornetbb@gmail.com  
Course venue: Learning Centre,  
7 Kepa Road, Ruakaka



## Harcourts Waipu



**Price Reduced – Vendors Ready to Move**  
\$639,000 **WAI2467**

- Affordable 3 bedroom plus study family home
- Sitting proudly on a 1177m<sup>2</sup> section
- Solid weatherboard with native timber floors
- Open-plan dining, living, and kitchen
- Family bathroom, second shower, and toilet
- Basement garage with workshop/storage area
- Walk to Maungaturoto shops and cafes
- Serious Vendors have purchased next home!

Christine Tierney 027 488 1883



**Happy Retirement Living in Saorsa**  
\$560,000 + 7.5% Saorsa Fee **WAI2537**

- Cozy and refurbished 2-bedroom unit
- New kitchen and separate laundry
- Sunny conservatory flows from the lounge
- Internally accessed single garage
- Safe and friendly community
- Join in with all the village activities such as cards and potluck dinners
- Short stroll to Waipu township

Roger King 0277 555 001




**Beauty on Watch Lane** **WAI2335**  
\$1,050,000

- Immaculate 3-bedrm/2-bathrm home
- Expansive manicured 1175m<sup>2</sup> site
- Modern, spacious, and warm
- Heat pump in lounge and master bedroom
- Quality fixtures and fittings
- Built by Platinum homes in 2016
- Situated at the end of a cul-de-sac
- Easy walk to Waihoi Park and Waipu

Lyndie Mullins 021 101 6389

Harcourts Waipu | 7 The Centre, Waipu | 09 432 4000  
Waipu Real Estate Ltd Licensed Agent REAA 2008

**Harcourts Waipu**



## Our Reach Brings The World To Your Home

New Zealand  
**Sotheby's**  
INTERNATIONAL REALTY

**NOTHING COMPARES**

"Sandy and Yana are professional and considered in their approach. We exceeded expectation on the price, but more than this was the experience. We were walked calmly through the process from beginning to end solving problems carefully as they arose. Resilient and positive throughout, always available, we've sold a few homes in our time and this experience tops them all."

- Matt and Debbie.

**SELL WITH THE BEST**

Sandy McKenzie  
+64 21 431 541  
sandy.mckenzie@nzsir.com  
893 Cove Road, Waipu Cove, 0582  
Licensed Salesperson REAA 2008

Yana Bell  
+64 21 0807 9342  
yana.bell@nzsir.com

Each Office Is Independently Owned and Operated. NZSIR North Limited (licensed under the REAA 2008) MREINZ.



**BREAM BAY REALTY**

**BREAM BAY REALTY LIMITED (LICENSED: REAA 2008)**

Shop 11 | Town Centre | Ruakaka 0116 | NZ  
PH: 09 433-0300 | [bbrealty.co.nz](http://bbrealty.co.nz)  
[info@bbrealty.co.nz](mailto:info@bbrealty.co.nz)

Proud sponsors  
**SPCA**  
WHANGAREI

**NEW LISTING**



**OPEN HOME—SUNDAY 1.00—1.45pm**  
35 Karo Street, Ruakaka

**SITTING PRETTY ON KARO**

This desirable family home is well situated for all day sun with good size living and dining having pride of place with views of the surrounding area. The classic kitchen is sure to impress. There's 4 bedrooms, the main with ensuite & good size family bathroom services the other 3 bedrooms.

**Price \$830,000 | [#4161](http://bbrealty.co.nz)**

**JOANNE DEWSON AREINZ**  
**Mob: 021 780 622**



**OPEN HOME—SUNDAY 1.00—1.45pm**  
413 Prescott Road, Ruakaka

**THE PERFECT PAIR—HOME & INCOME**

Set on a private 2025m<sup>2</sup> section, with expansive sea views. Surrounded by lush greenery, flourishing trees and gardens, creating a serene atmosphere. Main —3 bedrooms + 2 bathrooms. Cottage—1 bedroom + 1 bathroom.

**Price by Neg | [#4160](http://bbrealty.co.nz)**

**FIONA SOUTHERN MNZM**  
**Mob: 021 317 775**



**A SUBURBAN RETREAT**

A gardener's haven, with mature trees, a rural outlook and privacy. The colonial style character abode has undergone some recent renovations. Family first with five bedrooms, two bathrooms and an additional rumpus. A generous 1576m<sup>2</sup> section and triple car garaging.

**Price by Neg | [#4114](http://bbrealty.co.nz)**

**JANINE GOLDSMITH AREINZ**  
**Mob: 021 432 793**



**OPEN HOME—SUNDAY 1.00—1.45pm**  
160B One Tree Point Road, One Tree Point

**A PEARLER HARBOURSIDE**

Spacious and private well loved home on large section. Wide hallways, open plan living, opening to covered portico. Separate lounge or media room. Three large bedrooms, two bathrooms, both with underfloor heating. Private walkway leads to beach access off Graham Street.

**Price \$1,025,000 | [#4151](http://bbrealty.co.nz)**

**JANINE GOLDSMITH AREINZ**  
**Mob: 021 432 793**



**LIVE THE GOOD LIFE**

A beautifully maintained sun filled home. The well-appointed kitchen & living areas all open to the North facing patio & large Archgola with drop down blinds. The three bedroom, two bathroom home is well laid out, with significant amounts of storage space. Perfect and private.

**Price by Neg | [#4104](http://bbrealty.co.nz)**

**JANINE GOLDSMITH AREINZ**  
**Mob: 021 432 793**



**ELEVATED IN THE DUNES**

This section is the pick of the bunch! Good size, easy contour to work with and in a quiet area away from the main road. Wheel the kayak or stroll down to the river and esplanade approx. 300m away. Only a few kms to the Ruakaka Town Centre and amenities.

**Price \$395,000 | [#4140](http://bbrealty.co.nz)**

**FRANCIE STOKES**  
**Mob: 022 656 0165**