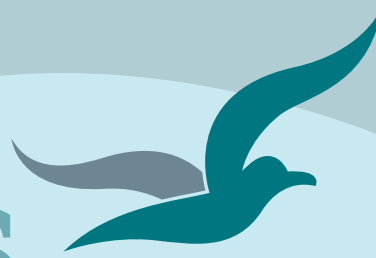


# Bream Bay News



Est.1967 | Locally owned and operated | Delivered FREE twice a month 21 September 2023

## Affordable Quality

- \* SECURITY DOORS
- \* INSECT SCREENS
- \* SHOWER DOORS
- \* BLINDS
- \* AWNINGS
- \* WARDROBE SYSTEMS

[www.homeplus.co.nz](http://www.homeplus.co.nz)



34 Albert St  
Whangārei

Est. 1977

PH: 438 9452

[whangarei@homeplus.co.nz](mailto:whangarei@homeplus.co.nz)

## Councillor Halse backs Brynderwyn viaduct proposal



Deputy Mayor Phil Halse

Phil Halse, Whangārei's Deputy Mayor and a Bream Bay Ward Councillor, has picked up a proposal made by Steve Goldthorpe back in 2017 for a viaduct rather than a bypass to solve the problem of the slip prone southern section of State Highway One over the Brynderwyns.

*Continued on page 3*

## Women in the Menzshed



Waipu now has an all women Menzshed team. Heather Simonsen approached some of the regular Menzshed members and asked if they would help her and a group of other interested women to up their skills with building tools. She advertised on line and in the Bream Bay News and soon had a group of eight keen Menzshed apprentices.

Last Friday 15 September, they met for a third session where they learned about the different types of saws. They have already contributed to making wooden predator trap boxes, a staple product of the Waipu Menzshed.

Heather said the Menzshed members have been very supportive and generous with their time.

As well as learning about building, Heather's hope for the group was that it results in "a community of women connected to each other with a common purpose and that it provide an opportunity for women to give their time and energy to a beneficial community project."

From left to right the Waipu Menzshed women are: From left Wendy Averill, Lucia Gemmail, Heather Simonsen, Janice Dainty, Rica Dearman, Donna Johnstone, Barbara McAulay and Patricia Calder



## Langs Beach 10 Breadalbane Place

881sqm 6 4 2

### Price by Negotiation

Christine Birss 027 235 4323 [christine.birss@bayleys.co.nz](mailto:christine.birss@bayleys.co.nz)

MACKYS REAL ESTATE LTD, BAYLEYS, LICENSED UNDER THE REA ACT 2008

### Beachfront stunner. Gorgeous views.

Like your own private resort, your family and friends will be very grateful if you are lucky enough to buy this special property

With simply a large grass reserve between you and the sand, it's hard to beat this position.

Beachside patio, large inside living areas or private courtyard - you choose where you want to relax.

**Opportunities like this don't happen often. Contact Christine today**

[bayleys.co.nz/1153182](http://bayleys.co.nz/1153182)

**BAYLEYS**

## Setting priorities for the next ten years

The weather may have changed, yet it has left some lasting effects on the finances of our Whangārei District, and now more than ever we need to work together.



Councillors have been working for some time on the District's 2024-2034 Long Term Plan that sets the priorities, budget and outcomes for the community in the next 10 years. It will be coming out to you for comment in March next year.

Our discussions reinforced that we need to make sure we have reliable assets and services for all our community. That also means working out a fair way to find funds for them. We currently use rates, government subsidies and user-pays, and these sources are all very stretched.

Global, national, and local situations out of our control are affecting our nation and our district and it is sobering.

The things we use as a council to build and maintain the district are harder to get, taking longer to get here and are costing more. At home we are facing inflation, weather events and skill shortages.

Our job as a council is to solder on, by making a good plan for the coming years, then working to it, and sticking together as a community.

One challenge is finding the skilled people our partners and contractors need to serve our fast-growing community. In the next ten years we are predicting a high growth population, and there will be a huge number of people retiring. This year, month after month of severe weather has had an immense effect on our infrastructure. We need to get this repaired and find ways to reduce the scale of any future damage. This is causing challenging discussions for communities, councils, central government agencies and industry alike.

Issues unique to New Zealand and our councils include central government reforms. If Three Waters goes ahead it will cut millions of dollars of income from councils' books and millions of dollars of value from councils' assets. This will then affect the interest rates that our council pays on borrowing. If we can't borrow as much at lower interest rates, it pushes up the prices for today's and tomorrow's ratepayers.

In summary, these are times of great uncertainty for our council.

We all acknowledge that everyone has a right to clean drinking water, sanitary waste disposal, safe roads, enough land to build houses on, a healthy environment and protection from severe weather events.

This means we will need to develop a plan that the community agrees with and is willing to commit to, especially when times are tough. The Whangārei Council will be releasing more information between now and the start of the consultation, for the Long Term Plan in March.

Vince Cocurullo  
Mayor, Whangārei District Council

## EDITORIAL

## If you love your children and grandchildren you need to think about this

António Guterres, Secretary General of the United Nations told the world last month "Climate change is here. It is terrifying. And it is just the beginning. It is still possible to limit global temperature rise to 1.5c above pre industrial levels) and avoid the very worst of climate change but only with dramatic, immediate climate action.

He urged politicians to take swift action.

"The air is unbreathable, the heat is unbearable and the level of fossil fuel profits and climate inaction is unacceptable. Leaders must lead. No more hesitancy, no more excuses, no more waiting for others to move first. There is simply no more time for that."

July of 2023 was very hot in countries in the northern hemisphere. It was, in fact, the hottest month ever recorded worldwide. There were unprecedented wild fires in the USA, Canada, Spain, Greece, and Hawaii: flash floods in China, Pakistan, India, Western Australia, Germany, Portugal, Spain and Libya - each of these catastrophic events bringing with it immeasurable tragedy, destruction and despair. While here in Aotearoa we were wondering if it would ever stop raining.

All the polling suggests, we are on the verge of electing a government that will use \$2.3 billion raised from an Emissions Trading Scheme to fund tax reductions. This takes away from a Climate Emergency Response Fund, set up to help industries transition away from burning fossil fuel. This fund has also been used to build cycleways and walkways, subsidise bus fares and install home insulation.

A National led Government also plans to remove the clean car subsidy that has resulted in thousands of New Zealanders investing in electric cars and scrap the fee charged on high emission vehicles.

Despite the urgency, climate change doesn't seem top of the list for most people as they weigh up their voting options. Neither of our two major political parties and only the Greens and to a limited degree Te Pāti Māori are talking about it or are putting forward any climate change mitigation proposals. The politicians in the two major parties are only too aware that most voters are more interested in immediate concerns, such as how much money they will get in their take home pay, and are not thinking about the bigger picture.

Now that the sun is shining again, the grass is growing and fruit trees are in blossom it is easy to forget about all those violent storms that marked the final months of 2022 and the beginning of 2023, though perhaps not so easy to ignore the damage they caused as still evident in the potholes in the roads, wrecked beach accessways, more slips ominously looming up there on the steep sides of the Brynderwyn hills. Warmer air holds more moisture in the atmosphere, which results in heavier rain. Climate change very likely contributed to those storms.

I wish more people had their eyes open. If you care about this world, if you have compassion for people who live in places most vulnerable to climate change, if you love your children and grandchildren and want a bright future for them, you need to think about this.

*Marilyn*



We are a primary care skin cancer clinic located in the Whangārei Town Basin. We focus on the early diagnosis and effective treatment of skin cancer in a friendly and welcoming environment.

- ✓ Full Body Skin Checks
- ✓ Dermoscopy Analysis of Moles
- ✓ Surgical & Non-Surgical Treatment
- ✓ No Referrals Needed
- ✓ Southern Cross Affiliated Provider
- ✓ Accredited Skin Cancer Doctors with the Skin Cancer College of Australasia



09 438 2188

131 Lower Dent St., Whangārei  
admin@skincancerdoctors.co.nz  
skincancerdoctors.co.nz



## THE BREAM BAY NEWS

is published by Bream Bay News Ltd.

Address : RD 2, Waipu Phone : (09) 432 0209

Mobile: 027 432 0070 Email : breambaynews@xtra.co.nz

Website: www.breambaynews.co.nz

Editor: Marilyn Cox . Accounts : Susan McRae.

Technical assistance... Geoff Spencer

Advertising design and website maintenance... Megan Lea.

Printed by NZME

We distribute 5,900 copies twice a month throughout Bream Bay,

Maungaturoto and Mangawhai.

Phone the BREAM BAY NEWS 09 432 0209

or email: breambaynews@xtra.co.nz

if you know of something interesting going on in Bream Bay.



## Councillor Halse backs Brynderwyn viaduct proposal



The Millau Viaduct is southern France

Councillor Halse wants to make clear this is his own personal opinion rather than that of the Whangārei District Council but argued, “Northland cannot afford to wait 10-15 years to see a fix to the South side of the Brynderwyn Hill which is the current prediction. The financial loss to the economy is close to \$2m per day that the road is closed. It was closed for 53 full days and 73 partially closed for another 73 over the past 12 months, and add that to continual emergency repairs costs to slips, retention walls etc. It is extremely expensive.

“Northlanders cannot sit back and allow this to continue silently while the outdated procurement and due process is followed. This is State Highway One and we should expect this to be treated the same as any parts of the country’s SH1 network. Urgency to address this issue is vitally needed.

The Waka Korahi favoured route, first proposed in 2017, is a bypass to the over Brooks Road farmland and lifestyle blocks, then through native bush and dropping into the flood prone Waipu Gorge. This option created very strong opposition from those affected with public meetings held and leading to a legal entity being considered to protect and fight for private

property rights.

Councillor Halse said, “Waka Kotahi cannot afford to waste the \$25m capital investment it spent rebuilding the north side of the highway over the Brynderwyns not so long ago.

“Our proposal is to use this piece of highway and join it to a new southern route plus the use of a viaduct to connect to SH1 well south of the Atlas Quarry entranceway. He has put this proposal to Waka Kotahi and will continue work with the NZ Transport Agency but says, “This is a Government funding issue that needs to be resolved.

He suggests some of the \$270m going into safety upgrades such as wire rope centre barriers; flexible posts and yellow

paint could be diverted into the viaduct.

“Surely one department can talk to the other and set Northland priorities.”

He points out, “This piece of State Highway 1 has claimed the lives of many people and continues to do so. On February 7 1963 a bus containing 35 passengers left the road on the lower southern slopes of the Brynderwyns and 15 people lost their lives, with many more injured. This still stands as NZs worst bus related incident to date. The road alignment where this happened is the same to-day after 60 years.”

“We have Northport going through a consenting stage to grow their business and we locals see this as a real growth node, building on the need to supplement Ports of Auckland. This is a wealth and job-creating move and we need to support it.

“This Brynderwyn route is the connector as the alternate transport provider the NZ Railway line from Oakleigh to the Port is also 10-15 years away on current forecasting. This line was first mentioned close to 50 years ago, and still we wait.”

In 2017 Mr. Goldthorpe, as the Waipu Riding Residents and Ratepayers Secretary, he made a submission to NZTA suggesting a viaduct as an alternative to a bypass to the west which would add an extra 15 kilometre

tres to the journey between Auckland and Whangārei. The submission said, “The evolution of a large residential community in the Brooks Road area has now compromised the creation of a new major transport corridor through that part of the countryside area to the west of the current SH1 route. Therefore a re-evaluation of other options is required.”

He gave the Millau Viaduct in southern France, which is twice the length and more than four times the height of what is needed here, as evidence of what is possible.

## Bream Bay Medical Centre warns it will dis-enroll abusive patients

The Bream Bay Medical Centre is giving notice that it will be enforcing a zero tolerance to abuse policy and anyone abusing or swearing at the centre’s staff will be dis-enrolled from the practice.

Practice Manager Kay Brittenden said the amount of abuse by the public was escalating especially towards administration staff over the phone.

Incoming calls would be recorded so that there is a record of the abuse.

Kay said, “It’s a pity we’ve got to this - but I need to do something to protect my team.”


**BREAM BAY  
STORAGE**

INSIDE/OUTSIDE storage at 50 Cove Rd., Waipu

**Free phone. 0800 432 135**  
**enquiry@breambaystorage.co.nz**

**www.breambaystorage.co.nz**



### One Tree Point 11 Kapiakauri Road

557 sqm  4  2  2  2  2  2

Price by Negotiation

Phone for viewing times

Mike Barrett 021137 5348 [mike.barrett@bayleys.co.nz](mailto:mike.barrett@bayleys.co.nz)

MACKYS REAL ESTATE LTD, BAYLEYS, LICENSED UNDER THE REA ACT 2008

### Park Life

Enveloped by warmth and light, you will instantly recognise the welcoming ambience of this home in the heart of 'The Landing', One Tree Point. This brand new single-level home offers the perfect solution for all your family's needs - robust construction, plenty of space, and seamless flow to a private outdoor living area. There's plenty of room on offer in this expansive home, with a master suite and two double guest bedrooms plus office or fourth bedroom. The open-plan living space is an entertainer's dream-come-true with a large, contemporary kitchen, separate lounge, generous dining area and excellent indoor/outdoor flow providing the scope to cater to any occasion. Call today.

[bayleys.co.nz/1060331](http://bayleys.co.nz/1060331)

**BAYLEYS**



**Camp Waipu Cove**

Recent winners of the Holiday Parks NZ Spirit of Hospitality Award 2023 and the GOLD Sustainable tourism business award from Qualmark for our environmental practices.

Do you need a break or a holiday to look forward to? Book your stay today in our range of cabins and camp sites, and mark that deidcated time away in your calendar!

09 432 0410   info@campwaipucove.com   www.campwaipucove.com

**holidayparks**  
NEW ZEALAND  
AOTEAROA  
Spirit of  
Hospitality Award  
Winner 2023  
Camp Waipu Cove

**Travelers' Choice**  
2023

**QUALMARK**  
GOLD  
★★★★★ PLUS

LIGHT FOOTPRINT  
SAFE & SOUND  
WARM WELCOME

## Marsden Bay Drive - dangerous for cyclists and pedestrians



Marsden Bay Drive - no room for cyclists or pedestrians

Despite a big increase in traffic due to residential and commercial development at Marsden Cove, Marsden Bay Drive, the road running from Port Marsden Highway to the marina has no footpath, many potholes and is subject to regular flooding. The road is used by cyclists who are forced into the roadside puddles by delivery trucks and vehicles towing boats to the marina boat ramp. The Bream Bay News has asked the Northland Transportation Alliance if there are any plans to upgrade the road but had not received a reply when the Bream Bay News went to the printer on Monday evening.

## Cattle tunnel a possibility for cycleway underpass

Some of the drivers of the proposed Ruakaka/One Tree Point cycleway will meet with Councillor Phil Halse and Northland Transportation Alliance staff this week to discuss ways to further the project.

They have also inspected two cattle tunnels, which runs under Port Marsden Highway to get an idea if this can be used as part of the trail. Grant Brown said while one of these has been completely filled in it might be possible to use a second, which runs under the Port Marsden Highway from the Marsden City development.

A petition has been left for people to sign at the Marina Restaurant and the Ruakaka Bakery. The petition will form part of a submission by the Bream Bay shared path group to the Whangarei District Council's Long Term Plan.

*As seen on Grand Designs 2019*



**COASTAL CONSTRUCTION PROJECTS**

0274 320 007

REGISTERED MASTER BUILDER   QUALIFIED TRADESMAN CARPENTERS   MARCUS@CCP.NZ   WWW.CCP.CO.NZ

**Phone the BREAM BAY NEWS - 09 432 0209  
or email: breambaynews@xtra.co.nz  
if you know of something interesting going on in  
Bream Bay.**

## Building in Whangarei, Kaipara, Far North



### Hunter 164sqm

**\$425,928 incl gst**

Includes: plans, consent, kitchen, appliances, tinted double glazed windows, tiles, carpet, blinds, heatpump.



Wayne Pickerill  
Managing Director

"Hi, I'm Wayne Pickerill, Managing Director and Project Manager for your new Fowler Home. Enjoy quality and all the benefits of dealing with an efficient, low overhead, nationwide company, where I will take a personal interest and be involved through to completion."



**FOWLER  
HOMES™**

More designs at [www.fowlerhomes.co.nz](http://www.fowlerhomes.co.nz) or visit our office at 63 Walton St, Whangarei. Phone Wayne Pickerill 438 4840



## A local roading overseer needed

The Waipu Residents and Ratepayers Association has asked the Northland Transportation Alliance to appoint a roading maintenance person to take care of the council's network of roads south of Whangārei City.

In a letter addressed to Calvin Thomas, General Manager of the NTA, the association said that many problems such as potholes, blocked roadside drains, and fallen road signs might get dealt with more promptly if there was someone concentrating on this area.

A locally based maintenance person might also be better at prioritizing where larger maintenance projects were most needed.

Deputy Mayor Phil Halse said he agreed that it is better to have a local person overseeing roading as we have in Bream Bay in the past and said both he and Councillor Ken Couper are working towards this.



A bumpy drive to the beach at Ruakākā

## Northport Vision for Growth hearings begin next month

The hearing for Northport's Vision for Growth expansion will begin before an independent panel of on Monday 9 October at Semenoff Stadium continuing throughout the week. It will then reconvene on Monday 30 and Tuesday 31 October at Takahiwi Marae. Northport's wants to carry out around 11.7 hectares of reclamation to provide an additional 250metre wharf extension.

In its Cultural Effects and Values assessment Patuharakeke Te iwi Trust Board has recommended that the lodging of the Northport Vision for Growth application be delayed until Northport's status as regional or national significance as a port is determined and the effects of climate change on Whangārei Harbour and Marsden Bay are better understood.

In the 43-page report it states, "Patuharakeke have been witness to many changes to this environment over many years.

The development record since the Poupouwhenua block was taken out of our ownership shows an uneven and chequered record, a boom/bust approach to heavy industrial development and a legacy of a degradation of the mauri of the harbour. The climate emergency will eclipse all others and, as the (former) Prime Minister has reminded us, will be the defining issue of our generation. We can no longer afford to make mistakes in our future planning and as such, it would be more responsible to fully consider all impacts of the climate emergency in relation to this proposal than to attempt to avoid them through early lodgement."

In response Northport is proposing to fund a Kaitiaki Group, to design and implement cultural, and ecological restoration of Poupouwhenua (Marsden Bay) and Whangārei Te Rerenga Parāoa (Whangārei Harbour

**BREAM BAY  
CURTAINS  
BLINDS  
AND SHUTTERS**

PH 0204 632 432  
FOR A FREE IN HOME  
CONSULTATION  
CALL SUE

AVAILABLE 7 DAYS A WEEK COVERING  
WHANGAREI TO MANGAWHAI, INCL KAIWAKA  
BBCURTAINSANDBLINDS@GMAIL.COM

CALL SUE TODAY  
0204 632 432



**BIG RED**  
TRUCKING

Owner /Operator Duncan Mackay



**GENERAL CARGO SERVICE**  
Metal / Topsoil / Sand / Manure / Hay / Silage

.....



**WATER**  
Prompt Delivery And Reliable Service.  
Healthboard Approved Drinking Water Carrier.

Call 021 070 8211

## LET'S TAKE BACK OUR COUNTRY

The New Zealand we know and love is hanging by a thread. Things are failing everywhere, all at once. I'm standing for NZ First to take back our region, and our country. Here's how:

1. **GET TOUGHER ON RISING CRIME**
2. **IMPROVE OUR ROADING**
3. **RE-ESTABLISH MARSDEN POINT**
4. **GROW NORTHPORT**
5. **STOP THREE WATERS**

If you want to give Northland a fair go, and return New Zealand to what we once were, then you know what to do. Join us, and Let's Take Back Our Country.

☒ GAVIN BENNEY  
☒ PARTY VOTE

**NEW ZEALAND  
FIRST**



Authorised by H. Howard, 3/33 Pahlitua St, Hokowhitu, Palmerston North.



Thinking concrete but don't know where to start?

## Think Atlas Concrete

- We quarry the aggregate
- We manufacture the concrete
- We site visit to advise the best options
- We give you the choice of mix and colours
- We give a choice of local placers for you to choose
- We manufacture concrete to your requirements
- We stand by our product, you stand on it

**Atlas Concrete**

**Your First Call for Concrete**

**Ph: 0800 888303 - Brynderwyn  
or 432 5030 - Ruakaka**

## Wide ranging discussion at the Ruakākā Meet the Candidates evening

### If showing up earns you points

If showing up earns you points here is a list of the candidates for the Whangārei Electorate in the upcoming general election who fronted at the Ruakākā Residents and Ratepayers evening held in the recreation centre at 7pm on Thursday 14 September.

They were: Rick Bazeley – Greens, Gavin Benney – NZ First, Diana Burgess – Democracy NZ, Dr. Shane Reti – National and Angie Warren- Clark – Labour, Huhana Lyndon the Green Party candidate for Te Tai Tokerau also attended the meeting.

The no-shows were: Susy Bretherton – Act, Fiona Green – Independent and Jeni de Jong – Legalise Cannabis.

Mr. Bazeley said he was asking for a vote for his Green Party and not for himself as an electorate MP.

Mr. Benney suggested, as Dr. Shane Reti is likely to be appointed Minister of Health in a National led government it would be strategic to vote for the NZ First representative as MP for Whangārei. Dr. Reti quipped that this strategy had not worked out very well in the past three year parliamentary term.



Gavin Benney, NZ First candidate, suggested people vote for him as MP for Whangārei as Dr. Reti is likely to be the next minister of Health and would get in anyway on the National Party list

### Kāinga Ora housing

To the question "should high density Kāinga Ora housing be foisted on communities?" Dr. Reti said he had worked with the residents who were concerned about Puriri Park Kāinga Ora complex being built in Maunu. However Huhana Lyndon said she had visited Puriri Park and felt it was a good model for Whangārei providing a range of different sizes of housing.

Gavin Benney said social housing is needed but it "has to be in the right place." Angie Warren-Clark said she made no apologies for the housing Kāinga Ora was building. More than 13,000 new homes had been built so far and more are in the pipeline. Kāinga Ora was building good quality, well designed

housing developments with ample green spaces and these needed to be in a variety of locations.

A man in the audience agreed saying he had recently moved to One Tree Point and he could testify that the social housing Kāinga Ora had built in Northcote, where he had moved from was of a very good quality and blended well with the existing community.

### The hole in National's budget

Grant Brown asked Dr. Reti what the National Party was proposing to do to plug the hole of an extra \$948 million it would need each week to run the country due to its promised tax cuts. Dr. Reti said that his party's finance people were meeting right now to look into that question. He said, "I have seen the figures and I believe they are sound."

He said there are hundreds of millions of dollars to be saved by not employing so many consultants and public relations personnel.

"I need real doctors not spin doctors."



Dr. Shane Reti - "I need real doctors not spin doctors."

### Just \$10.20pw tax relief for a single person on a minimum wage under National's tax cuts

A young man asked how much tax reduction a single person working full time on the minimum wage would get under the National Party's tax plan. Dr. Reti gave a figure for a married couple with two children. Using the tax calculator on the National Party website, a single person on a minimum wage would receive a tax cut worth \$20.39 per fortnight.

### Who would introduce a capital gains tax?

Asked if their respective parties would bring in a capital gains tax all but the Greens said they would not although Labour's Angie Warren-Clark specified "not in the next term" perhaps indicating that this is on the cards at some stage for a Labour government.

Mr. Bazeley said that a capital gains tax would help to address inequity,



Angie Warren-Clark - "Not in the next parliamentary term"

**HAMMER HARDWARE**  
 It's your local

**wattyl**

**FORESTWOODS**

BE IN TO  
**WIN A BABY Q®**  
 Purchase any 1L or more Accent or Wattyl product to go in the draw\*

\*Purchase any 1L or more Accent or Wattyl product during September 2023 at Hammer Hardware Waipu only to go in the draw to win.

**OPEN 7 DAYS: Monday - Friday 8am - 5pm  
 Saturday 8am - 4pm | Sunday 9am - 9pm  
 Public holidays 9am - 3pm  
 Waipu Hammer Hardware  
 35 The Centre | 09 432 0292**



which is growing in New Zealand society. He said the wealthiest one percent of New Zealanders hold 25% of New Zealand's financial assets.

## Should 16-year-olds be able to vote?

A question from the floor was "If the voting age is reduced to 16 then should 16 year olds who commit crime be tried in adult courts?"

Gavin Benney said the question of giving 16-year-olds the vote should go to a referendum. He agreed it seemed a bit contradictory for 16 year olds to be given the vote but then not to be facing the consequences of their actions in the same way adults do.

Mr. Bazeley said as a teacher he was aware

there are some very intelligent and knowledgeable 16 and 17 years old and as it is young people who will be bearing the consequences of the stuff ups adults are making he felt they should be able to vote.

Diana Burgess drew applause and laughter when she said she wouldn't like her teenage sons to be able to

vote, as the frontal lobes in their brains were not developed enough.

## Will removing the bright line rule and reinstating a tax rebate for interest paid on rental properties push up the price of houses?



Diana Burgess the Democracy NZ candidate said the frontal brain lobes of young men at 16 are not developed enough for them to be given the vote.

Dr. Reti was asked about the effect of the National Party's proposal to remove the bright line property rule and to reinstate a tax rebate on interest paid on rental properties on the ability of people to purchase their first home. He replied that it was impossible to get a rental in Whangārei and this would make more available.

Currently under the bright line rule those selling residential properties brought after March 27 2021 pay income tax on any increase in the prop-



Rick Bazeley said the wealthiest one percent of New Zealanders hold 25% of the country's financial assets and these measures would only serve to increase this disparity

erty's value if it is sold inside a ten-year period. Rick Bazeley said these measures would further increase the disparity of wealth in New Zealand.

## A crime wave in Ruakākā

Dr. Shane Reti said we are experiencing "a crime wave" in Ruakākā with the number of vehicles stolen up to 32 last year from 9 in 2018 as well as an "abduction" and "kidnapping".

## Health system in crises

He also said the health system is in crises with Emergency Departments and the Aged Care sector in particular difficulties. He said National would bring back health targets for Te Whatu Ora to meet. However a retired nurse seated in the audience replied that in the past targets hadn't helped at all and people were sent home from hospital emergency departments because they would not be able to be seen within the set time frame.

## Another chance to Meet the Candidates

Promote Waipu and the Waipu Residents and Ratepayers Association will host another Meet the Candidates evening tonight - 21 September, at 7pm - 9pm in the Waipu Presbyterian Church Hall, 45, the Centre.

**Inspire | New Zealand**  
**REAL ESTATE**

Taking Care of Your Investment New Zealand Wide

### Are you Buying or Selling property?

Give me a call – I can offer you top quality service, competitive professional marketing, and attractive commission rates.

Talk to me today for a Complimentary Appraisal.



### NO GEOGRAPHIC BOUNDARY RESTRICTIONS

Selling Residential, Lifestyle, Rural, Coastal & everything in between!

**Carleen Still**

(021) 148 9804

carleen.still@inspireproperty.co.nz

Licensed Salesperson - REAA 2008  
Inspire Real Estate Licensed Agent under REAA2008

Looking for an Agent who Cares?  
Call Me.



## SPRING PLANTING TIME



Come and visit us in our little slice of paradise.

Email: [breambaygreenworld@gmail.com](mailto:breambaygreenworld@gmail.com)  
or phone 0274 952 441.

You can also reach out to us through  
our website at [www.breambaygreenworld.nz](http://www.breambaygreenworld.nz).  
656 One Tree Point Road.

We are open from  
Tuesday - Saturday 8:30am - 4.30pm.

## Margaret B Hicks 9 August 1933 – 9 September 2023



Margaret Hicks

Margaret Hicks, one of Ruakākā's best known characters, died last week in Whangarei Hospital at the age of 90 years, after suffering a severe stroke a few days earlier at her home alongside the Ruakākā River. Margaret was cared for in her later years by her two good friends Robyn Hembry and Luana Pirihi who were at her side at the end.

Margaret was born in South East London. Her parents made sure Margaret and her sister Angela each got a good education, having been denied this themselves. Angela in a written piece read at the service by Robyn said she remembered many visits to the maritime Museum at Greenwich with her "clever older sister" and it was on one such visit Margaret had declared her intention to some day sail around the world. To prepare for this she studied astronomy, geography and navigation.

Aged 18 Margaret left home to train as a teacher at Portsmouth. After spending a miserable time working in the state education system she got a job with the shipping line P&O, giving lessons to children on cruise ships. Always looking for a new adventure she then spent a few years teaching English as a second language in Sweden.

But she retained her dream and returned to the United Kingdom where she purchased a Hurley 22 sailboat and set off to sail single handed across the Atlantic and then on into the Pacific, navigating by the stars.

She got as far as Moorea in Tahiti where her yacht was rammed by a fishing boat. She was unsuccessful in her pursuit of damages from the two Frenchmen she claimed were drunk and responsible for the collision and after spending time in Moorea came to New Zealand.

She first lived in Ponsonby, Auckland where she was active with Jim Anderton's Alliance Party and campaigned to stop Herne Bay property owners felling pohutukawa trees to secure better sea views. In the recent Auckland flood events Margaret commented she hoped those pohutukawa killers were reaping the results of their destruction with the cliff tops their houses are perched on suffering slips and erosion.

Spencer Cummings said Margaret was an "environmental warrior."

If someone had taken a dog into the wildlife refuge at the Ruakākā Estuary or walked into the fenced off

nesting area "this old lady would confront these people. She wouldn't back off" and on several occasions she had complaints laid against her with the Police. Margaret was the first to understand the threat kite boarders posed to the refuge. She saw that birds viewed these kites going back and forth above them as giant predators and were chased away from their feeding, roosting and nesting sites.

She was a founding member of the Bream Bay Coastal Care Trust and pointed out how the ecologically significant Ruakākā Dune Lake was being degraded without protective fencing and racehorses grazing alongside. As a result of her concerns the trust fenced off the south-western edge of the lake and has worked to restore native coastal vegetation there.

Over the years Margaret fought many battles: against Mighty River Powers proposal to convert Marsden B to a coal fired power station and against a bid by the outdoor timber supply company Goldpine to build a timber treatment plant in Flyger Rd.

She remained vehemently opposed to the Marsden City Development on One Tree Point Rd., contending that the land this is built on would be subject to flooding as climate change takes effect.

She wrote many submissions to Council Hearing committees and Council plans.

Deputy Mayor of Whangarei Phil Halse said, although he had often been in Margaret's "line of attack", he had developed an affection for her.

He spoke of how amusing it was to see Margaret at a Council hearing.

"She would come in with 15 pages of hand written notes. Mayor Craig Brown would warn 'You have five minutes Margaret.' After five minutes the bell would ring but Margaret would keep talking. Craig would say again 'you have five minutes Margaret' and she would say 'But Craig, I still have all these pages to read'. In the end she usually spoke for 15 minutes."

Juliane Chetham said Margaret had been "a wonderful ally" for the mahi of the Patuharakeke Trust Board's environmental unit.

She said if Margaret had asked her to read through one of her hand written submissions it would take an hour out of her busy life to decipher. However, it would be worth the effort.

"She would have articulated the issues very well and pretty much covered off all our concerns."

Chris Smith, a Whangarei District Council Compliance Officer, who has previously worked in the Infrastructure and Community Service department, said Margaret was "the most interesting customer the Council has ever had." She had been a regular visitor to his office and over the years he had come to respect her "wealth of knowledge and great determination and vigour."

Because of the interest she took and the many submissions she wrote on the development of the Ruakākā wastewater treatment plant, Margaret was appointed as its "independent monitor". She took the job seriously regularly visiting the site in the dunes north of Ruakākā Towncentre and pointing out any problems as they arose to the Council.

In recognition of Margaret's love of sailing and the sea Dr. Mere Kepa, who conducted the service, read John Masefield's poem Sea Fever.

"I must go down to the sea again, to the lonely sea and the sky, And all I ask is a tall ship and a star to steer her by"

Mere said Margaret had been "steadfast in her environmental activism. She was tall, slim, blue eyed – a Viking."

## Thai Therapeutic Massage In Ruakākā

Reduce stress & anxiety Improves circulation & posture  
Improve flexibility Enhances mobility  
Ease back pain Inner peace, joy & self awareness

Mai is a qualified Thai Massage Therapist with over 15 years experience.

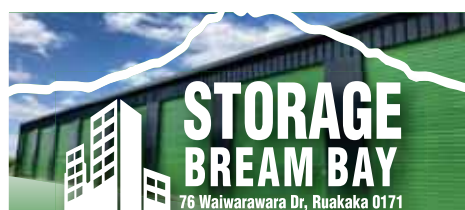
She is passionate about helping people move and feel better within themselves

Mai has helped a huge range of people from all over the world feel more comfortable and move more freely



Call Mai 021 0256 1928

Appointment Only



## Not Just Storage!

Conference Room  
Commercial Kitchen  
Onsite Separate Office

Enquiries Ph. 09 432 7732 or 021 432 701

email: [storagebreambay@gmail.com](mailto:storagebreambay@gmail.com)  
[www.storagebreambay.co.nz](http://www.storagebreambay.co.nz)

## THE NEXT PUBLICATION DATE

of the Bream Bay News will be Thursday 5 October  
The deadline for all copy is 4pm on  
Wednesday 27 September



## Another truck stop/service station proposal

The Whangārei District Council has received an application for resource consent to build an unmanned service station and truck stop at 4 Mountfield Rd., alongside State Highway One and opposite the Uretiti Department of Conservation campground.

The application was received by the Council on 21 August. The applicant is Vishal Arora of NZ Venture Properties Ltd.

There are now four service station and truck stop proposal at various stages of Council consenting and development alongside the stretch of State Highway One from the Ruakākā roundabout to Millbrook Rd., south of Waipu.

Earthworks have begun on a development by Wolf 2008 Ltd. with directors Barry Trass and Brian Eun-

son. This is located 200 metres from the Ruakākā Roundabout on the north side of Port Marsden Highway.

Simon and Nancy Tan, owner operators of the Spring Flats Café in Kamo, have purchased 18 hectares of land alongside the SH1 and Port Marsden Highway for a truck stop, petrol station complex.

And Vaco Property Investment Ltd. - director Antony Ivo Arnerich of Taupaki, has lodged a application for resource consent to build the Waipu Gateway Service Centre, comprising a BP petrol station, a fast food and other food outlets with additional space for light industrial and commercial activities.

## St. Peters Church in Nova Scotia Rd. undergoing renovations

St Peter's Anglican Church in Nova Scotia Rd. is undergoing renovations.

The Reverend Doctor Mark Henrickson said the work was expected to take around four or five months and included: an upgrade of the toilets, allowing better access, an upgrade of the tea room and an access onto the balcony.

"We are aiming to be even better hosts to our guests", he said.

In the mean time all Anglican Church services will be held at St Pauls in Karawai St. Ruakākā. Normally weekly Sunday services alternate between the two churches.

The Waipu Riding Residents and Ratepayers Association, which normally meets in the church super room has moved to the Presbyterian Church Hall at 45 The Centre in the interim.



**WHITTAKERS**  
funeral home



**09 988 9049**

whittakersfunerals.co.nz | admin@whittakersfunerals.co.nz  
25 Kapa Road Ruakaka 0171 | PO Box 241 Ruakaka 0151



**RUAKAKA  
SAFE  
STORAGE**

**99 MARSDEN PT ROAD, RUAKAKA**

92 Units from 6 x 3 to 1 x 1  
Each unit individually alarmed and monitored  
Electrified security fence

**Ph. 0508 273 262 or 0275 310 788**

**CLEAN - DRY - SECURE**

## PETFOOD: FREE HOME DELIVERY

RAW FOOD (FROZEN) . DRY (KIBBLE) . FREEZE-DRIED . CANNED . TREATS . CHEWS



### FREE HOME DELIVERY TOWN & RURAL

Ruakaka, One Tree Point, Mangawhai, Kaiwaka, Paparoa, Maungaturoto, Whakapirau, Port Albert, Wellsford, Te Arai, Tomarata, Leigh, Omaha, Matakana, Kaipara Flats, Snells Beach, Algies Bay, Warkworth.

### GUARANTEED FROZEN

We transport raw food by freezer truck and it is delivered inside a freezer bag. We txt you on arrival so you know it is there.

### VISIT OUR MOBILE SHOP

Mangawhai Market every Saturday morning and the One Tree Point Market on the 3rd Sunday of each month.

FOOD FOR DOGS . CATS . BIRDS . HENS . DUCKS . RABBITS . GUINEA PIGS . FISH . REPTILES



**SUPPORT LOCAL.**

**BUY YOUR PET FOOD FROM BOB & BEN.**

Steve 027 292 4891

**www.bobandben.co.nz**



### LIONS' CLUBS OF MARSDEN & WAIPU JUNIOR CITIZENSHIP AWARDS

#### WAIPU SCHOOL

Sienna Mewett	Peyton Murray
Mila Tonkin	Sakura Richards - Ng
Nakota Steel	Mac Gordon
Lily Harding	Tai Hay
Hunter Mackay	Summer Comery
Riley James	

#### RUAKAKA SCHOOL

Sophia George	Manu Reid
Tishyian Amopiu	Manaia-RaeDonaldson
Ocean Poutai	Olivia Ferreira
Terry Casey	

#### ONE TREE POINT SCHOOL

Elena Macarthy	Isla Bennett
Francesca Travilla	Jessica Newey
Zoe Moore	Torben Smeal
Cairo Rouse	

#### BREAM BAY COLLEGE

Kobe Malota	Eloise Grieve
Violet Hammon	Creedence Nelson
Cheyenne Watts	Jaylen Carson
Hosea Kaiarake	Jonathan Setiawan
Harmony Cordell- Hunt	Kozanne Pirihi- Mrkusich
Eli Malota	Sophie Pram
Kaiser Jacoby	Shane Wassell

## Marsden and Waipu Lions Junior Citizenship Awards



Junior Citizenship award winners.

At a ceremony held in the Bream Bay College Auditorium last week (Thursday 14 September) Graham Goodall, President of the Waipu Lions and Dennis Smith, President of the Marsden club shook the hands and handed out certificates to 37 local young people who had demonstrated qualities defined in a Junior Citizenship Code.

The code requires them to be: honest in what they say and do, friendly and helpful towards other people, generous with their time and talents to help improve your community without thinking about personal reward, courteous and well mannered, respectful towards senior citizens, willing to accept responsibility, sympathetic towards those who are sad and those who need support, careful with criticism, generous with praise,

determined to improve, care for and not destroy our environment, loyal to their community and country and prepared to accept criticism of themselves and be willing to improve.

The idea was copied from the Remuera Lions Club which has been running Junior Citizenship awards for more than 15 years. Gladys Rowsell who introduced the awards to the Marsden Lions said she likes the fact that recipients are not usually the high academic achievers or the amazing sportspeople who already receive their share of awards.

The Lions provided supper after the ceremony for all the award winners and their proud parents and grandparents.

### THE NEXT PUBLICATION DATE

of the Bream Bay News will be Thursday 5 October  
The deadline for all copy is 4pm on  
Wednesday 27 September

### MARSDEN POINT HIGH TIDES

	AM		PM	
Thu 21 Sept	11.36	2.4	11.48	2.4
Fri 22 Sept	~	~	12.24	2.4
Sat 23 Sept	12.37	2.3	1.19	2.4
Sun 24 Sept	1.33	2.3	2.21	2.4
Mon 25 Sept	3.36	2.3	4.27	2.4
Tue 26 Sept	4.44	2.3	5.32	2.5
Wed 27 Sept	5.53	2.4	6.32	2.6
Thu 28 Sept	6.56	2.5	7.27	2.7
Fri 29 Sept	7.54	2.6	8.20	2.8
Sat 30 Sept	8.48	2.8	9.10	2.9
Sun 1 Oct	9.38	2.8	9.58	2.8
Mon 2 Oct	10.27	2.8	10.46	2.8
Tue 3 Oct	11.14	2.8	11.33	2.7
Wed 4 Oct	~	~	12.02	2.7
Thu 5 Oct	12.20	2.5	12.50	2.6
Fri 6 Oct	1.08	2.4	1.41	2.4

## An inspirational speaker

An inspirational speech was made by guest speaker Jess Andrews, who is one of the head girls at Bream Bay Collage with a myriad of achievements under her belt. The seventeen year old spoke of her team building experiences on the Spirit of Adventure, developing a passion for football and playing and coaching to a high level. Other achievements include a black belt in Kenpo karate and competing and patrolling for the Ruakākā Surf Lifesaving Club. "Sport makes up who I am", she said.

As a keen competitor in IRB races and all round active member in the Ruakākā club. Jess is keen to pursue saving lives to a professional level. Her goal is to become a paramedic on the rescue helicopter.

"In order to go forward you must put back ". Jess emphasised the importance of acknowledging those who aid you in your journey and to express gratitude for "those who helped you achieve your goals along the way".



Guest speaker Jess Andrews

**Phone the BREAM BAY NEWS - 09 432 0209**  
**or email:breambaynews@xtra.co.nz**  
**if you know of something interesting going on in Bream Bay.**



## Diggermate Bream Bay - Growth with Local Talent



Kodi Brown - Diggermate's Waipu representative

Kodi Brown grew up in the Bream Bay area and attended Bream Bay College. He is the grandson of Roly and Pam Brown who once owned a local business also in the construction industry. Kodi is an experienced drainlayer and digger operator. He lives in the Waipu area where he is an assistant Rugby Coach for the U18's.

He joined Diggermate last month after several years with a local drainage and earthworks company.

Kodi said "I'm enjoying working with family members and having a focus on developing people. I'm looking forward to Diggermate opening in Waipu soon. We can offer excavators to our local community, both wet hire (man and machine) or dry hire."

Kodi will be attending the October Diggermate conference in the Gold Coast where he will learn more about the business model and meet other Diggermate business owners and operators. His wife Sam will also be joining him, so they can take a quick break away together.

Kodi is more than just a skilled professional; he is a valuable asset that will help us dig deeper, reach higher, and build stronger. His expertise will undoubtedly enhance our project efficiency and contribute to our continued growth.

The Diggermate team are all locals and love to be active contributors to the community. For a small locally owned business they are punching above their weight with supporting the Takahiwai Rugby League Club and taking on four Gateway work experience students from Bream Bay College. The future is bright in the Bream Bay area and its crucial our youth see pathways to work and prosperity in our community.

Diggermate's home yard is in Ruakākā but we will soon have satellite locations in Waipu and Whangarei.

To hire a machine or book an operator, call Kodi on 022 068 9481.



# Diggermate

**BREAM BAY EARTHWORKS**

Tight access and lifestyle block specialists

COMMERCIAL AND DOMESTIC PROJECTS

LONG TERM TO HALF DAY TIMEFRAMES

**CALL GEORGE**

## 027 214 5501

- Site Clearing And Leveling
- Post Augering
- Landscaping Preparation
- Pad Excavation
- Concrete And Demolition Removal
- Race And Farm Roading
- Driveway And Road Construction
- Stump Removal
- Concrete And Paving Preparation
- Earth Removal And Loading

- EQUIPMENT:**
- Micro to Mini Excavators - 1t to 5t Kubota
- Mini Loaders
- Tipper 1t, 3t and 5t
- Compactors
- Augers 100-600mm
- Rock Breaker
- Rock Grab
- Grader Blade
- Mini Loader -Trencher, Auger, Grader

Book Online Now:  
**DIGGERMATE.COM**



Our machines and attachments are brand new and wide ranging. Our operators are trained and experienced enabling us to deliver a broad scope of works on time and in budget while attending to the smallest details on each project. Diggermate Bream Bay is locally owned and operated, so call today for a free site visit.

# Hydroseeding Spray On Lush Lawns

Specialising in the professional preparation, seeding and growth of new lawns for your new home.  
Get yourself a lawn you can be proud of!



For a free consultation & quote, call or email  
George 021 688 949  
info@gogreenteam.co.nz



## Fale Pasifika presents a showcase of Samoan Dance in the Waipu Coronation Hall

Fale Pasifika Dance Academy will present an end of term showcase featuring dance from Samoa this Friday 23 September in the Waipu Coronation Hall. Doors open at 5pm and the show begins at 6pm.

General Manager Johnny Kunitau explained that Fale Pasifika cares for Pacifica people living in Te Tai Tokerau.

"We want to let people know we are here and to teach our children about our culture and our identity."

Moka Fotuhetule has been taking dance classes on behalf of Fale Pasifika each Wednesday afternoon in the Waipu Coronation Hall. She also teaches a class in Whangarei. She has around 50 students from Waipu Primary and Bream Bay College. Many have a Pacific Island family connection but some are from South Africa and some are Māori.

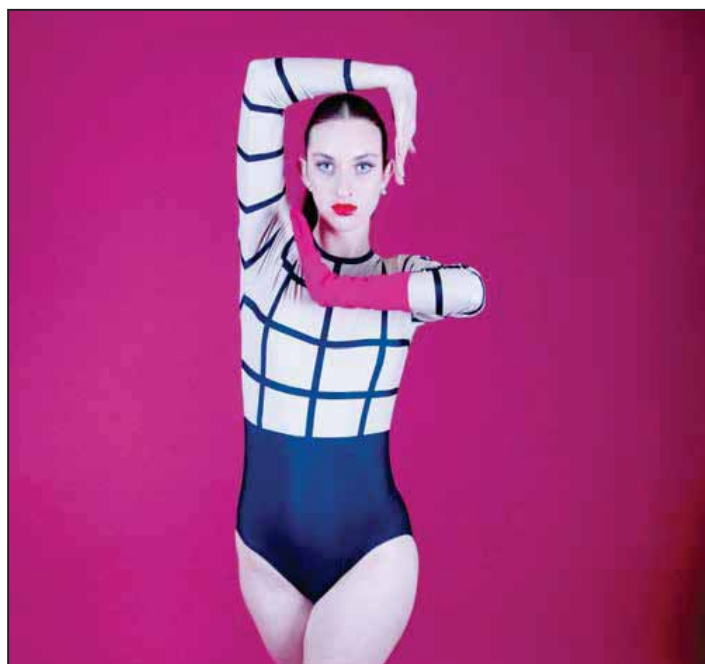
She plans to focus on a different Pacific island style each term. Last term it was Cook Island dance and this term it is Samoan.

Moka's father is from Nuie and her mother from the Cook Islands. She was born in Auckland and, while her immediate family wasn't particularly involved in dance and music, she had aunts, uncles and cousins who were and this is how she learned to dance.

Also the schools she attended in Auckland placed a lot of emphasis on Pacific Island culture but she found this wasn't the case in Bream Bay.

Moka organised a colourful Pasifika float for the 2022 Waipu Christmas parade and her daughter Jaylen was judged best female dancer at the Cook Island intermediate schools' dance competition in Auckland in August.

## A dance celebrating friendship



Sofia Kite

Dancer Sofia Kite of Waipu will perform with the Niche Dance group of Whangārei at the Riverbank Theatre, Whangārei this Saturday 23 September.

The show is entitled "Extensions of my Thoughts" and Sofia and a friend will perform in a piece they developed together. Sofia will also dance in three group pieces. Dance teacher Keneisha McKenzie said contemporary, jazz and lyrical dance styles would all be included in the show.

Sofia and her friend Georgia Williams developed the story line for their dance together. They also chose the music and organised the costumes.

The piece charts their relationship: how they were a bit wary of one another to begin with and then became good friends. Finally they go their separate ways but vow to keep in contact.

Both Sofia and Georgia are Year 13 students at Pompallier College. Sofia hopes to study for a Bachelor of Science, majoring in human nutrition at Massey University in Albany and Georgia plans to study for a law degree.

Sofia began dancing 12 years ago with Bream Bay Ballet and then went on to the Whangārei Academy of Dance and Performing Arts. She joined Niche in 2020 and, since 2022, has been part of the Niche senior performance group, which last year qualified for a national dance competition in Palmerston North.

Sofia is unsure if she will keep dancing next year when she moves to Auckland as it takes a lot of commitment and time. She said if she comes across a dance studio near where she is living and can dance non-competitively she might join up.

Start times for the Saturday 23 September shows are: 2.20pm and 6.30pm. Tickets can be purchased on the Niche Dance instagram page or at the door. The price is \$15 for those under the age of 18 and \$20 for those 18 years and over.

**FALE PASIFIKA DANCE ACADEMY PRESENTS**  
**Siva Samoa!**

<b>WHAT</b>	<ul style="list-style-type: none"> <li>Fale Pasifika Dance Academy's end of term showcase featuring dance from Samoa</li> <li>Gold coin entry donation at the door</li> <li>Raffle tickets available—support our fundraising and be in-to-win a big food hamper!</li> </ul>
<b>WHEN</b>	<ul style="list-style-type: none"> <li>Friday 22nd September (last day of term 3)</li> <li>Doors open at 5pm, the show kicks off at 6pm and is followed by a shared kai</li> </ul>
<b>WHERE</b>	<ul style="list-style-type: none"> <li>Waipu Coronation Hall</li> <li>47 The Centre, Waipu</li> </ul>

**Gold Coin Entry**

For more info contact Moka:  
020 407 36574  
Or Fale Pasifika:  
09-430 2717

**Waipu Presbyterian Parish**

<p><b>Contacts:</b></p> <p><b>Minister</b> - Tom Waight - 432 0534</p> <p><b>Mainly Music</b> - Sharon Smith - 432 1050</p> <p><b>Toy Library</b> - Julie Malone - 432 0388</p> <p><b>Church Hall Hire</b> - Cally James 432 0534</p> <p><b>Family Welfare &amp; Foodbank:</b></p> <p>Co-ordinator - Helen Matheson - 432 0239</p> <p><b>Budgeting Advice</b> - Bruce Matheson - 432 0239</p> <p><b>The Crossroads Trust</b> (financial support)</p> <p>Lyn Jones - stevolyn@gmail.com</p>	<p><b>Sunday Services</b></p> <p><b>Ruakaka</b> - Camellia Ave - 8.45am</p> <p><b>Waipu</b> - 50 The Centre - 10.15am</p> <p style="text-align: center;"><i>Working with you - for your Community</i></p>
--	---

Phone the BREAM BAY NEWS - 09 432 0209  
or email: breambaynews@xtra.co.nz  
if you know of something interesting going on in Bream Bay.



## Welcome to the One Tree Point Filipino family

Last weekend on Sunday 17 September Perlita Smith and Tess Hansen, two long time residents of Bream Bay, organised a party to welcome people newly arrived from the Philippines into what they call their One Tree Point Filipino Family. There have been 23 new arrivals in the past 12 months to join a fast growing community of Filipino people living in Whangārei and the Bream Bay area.

Helped by Perlita and Tess many of the new families have found jobs and have settled into homes in Ruakākā and One Tree Point. They have a variety of occupations. Michael Enguerra, who arrived just last month, has a job in house insulation. Edesa Enguerra who arrived on 30 September has experience in healthcare and hopes to find work in a local aged care facility. David Magarro is a fiberglass technician and has a job with a boat builder at Marsden Point.



## Safe Guy Wires

Northpower's powerlines cover our region crossing both public and private property. Guy wires that support our power poles are critical safety items. We are continually on the look-out for anything that is not up to scratch.



**What's a guy wire?** Guy wires run from the top of the pole to the ground and play a key role in ensuring the stability of the pole, and the insulators on the wire provide protection from electricity at ground level if anything goes wrong at the top of the pole.

**For everyone's safety, it's important that guy wires:**

- Have an insulator on them
- Are well anchored, intact, and not compromised by severe rust.
- Are nice and tight (not slack at all)



Northpower are out and about every day checking the safety of our 5500km of line, but your real time 'eyes on the ground' can help us with that, if you do come across a guy wire that has come loose or doesn't have an insulator, send us a photo with the location to [info@northpower.com](mailto:info@northpower.com) or give us a call on 0800 667 847.

**Let's stay safe together!**

Northpower



**STAY  
SAFE  
TOGETHER**

[northpower.com](http://northpower.com)

Waipu Rugby Squash Club presents

**WAIPU TOUCH 2023**

Thursday 19 October - Thursday 7 December  
at the Caledonian Park, Waipu

**JUNIOR MIXED TEAMS**

- 4pm – 6pm
- \$10.00 per school student per team
- Year 1 – 3 grade
- Year 4 – 6 grade
- Year 7 – 8 grade
- 7-a-side (minimum of 2 females on field)
- 30 minute games
- Each team must provide a referee for their own game
- Each team must provide a Touch ball for their own game
- Fees to be paid in full by Thursday 26 October 2023
- Children 8 years and under must be actively supervised by a caregiver 14 years of age and over

**SENIOR MIXED TEAMS**

- 6pm – 8pm
- Super Social grade \$200.00 per team
- Social grade \$200.00 per team
- 7-a-side (minimum of 2 females on field)
- 30 minute games
- Each team must provide a referee each week
- Each team must provide a Touch ball for their own game
- Minimum age for senior grade is 13 years old
- Fees to be paid in full on Thursday 26 October 2023
- This is a fun, family friendly, social event.
- Alcohol is not permitted on Caledonian Park (only upstairs in clubroom)

Register team with Lisa Jones 021 163 0237 or

Email: waiputouch@gmail.com

## Presentation on cyber safety for young people

How often do you see a young person with a phone in their hand? Do you know who and what they are viewing and interacting with online? To learn more about the issues at hand Rob Cope, author, parent and filmmaker of the 2020 documentary 'Our Kids Online' is coming to Whangārei, on the 9th October, 4:00pm – 6:00pm. His presentation is a must see for parents, caregivers, teachers, and



Rob Cope

everyone who engages with young people in our community. Families and schools frequently deal with issues such as cyberbullying, online grooming, and the viewing of inappropriate material by young people. As technology becomes more widely available and ways of communication adapt faster than many can keep up with, keeping our young people safe is increasingly more challenging. Rob Cope's humorous but hard-hitting presentation gives everyone the opportunity to consider how best to work with young people to keep them safe.

The event is being sponsored by the Resource Teacher: Learning & Behaviour Service (RTLBS). The Service views the presentation as critical for all teachers and parents of teens as they frequently see some online practices leading to disengagement in school, increasing numbers of students experiencing anxiety and mental health concerns including addiction, non-attendance at school and a raft of unsafe and antisocial practices. It is also worth noting that schools are increasingly working with students where the activities they interact with at home or out of school affect the life of the school and most often it is around the creation and posting of bullying behaviour on social media.

Statistics around cyberbullying in New Zealand paint a worrying trend. According to Internet Safety Practices (<https://www.internetsafetystatistics.com>) 30 percent of secondary students have been directly bullied online. The statistics also indicate that New Zealand's bullying and suicide rates sit amongst the highest in the world. Surveys also carried out by Internet Safety Practices also report that 85 percent of parents do not monitor their children's online usage.

In his presentation Rob Cope uncovers the issues facing young people online and offers solutions for teachers and parents to support them in their use of internet tools. As the first generation of teachers and parents to have children who have been born into the cyber world, it is important we know how to support them to navigate it safely and without harm to themselves and others.

Entry to the presentation, being held in the Whangārei Boys' High School Auditorium is free and tickets can be gained from Eventbrite, <https://www.eventbrite.co.nz/e/parents-and-teachers-cyber-safety-presentation->

## Love being active?

**24/7 gym**

- no lock in contract,
- no admin, no joining fee
- \$10 per week
- Ladies only gym
- Unisex gym
- Casual gym \$2 per day

9 Takutai Place  
Ruakaka  
Ph: 432 7962

Opening hours:  
Mon, Tues, Wed, Fri  
8am to 2pm  
Thurs 8am to 6pm

Come and join us at the  
**Ruakaka Recreation Centre**

Lounge available for hire - up to 134 people  
Meeting room for hire - up to 15 people  
For events kitchen facility available

Very  
reasonable  
rates

### Activities at the Ruakaka Recreation Centre

Activity	Day and Time	Cost	Contact
Light Circuit Fitness class	Monday 10am to 11am		\$5 AnnMarie 0211660115
Light Circuit Fitness class	Wednesday 11am to 12pm		\$5 AnnMarie 0211660115
Preschool gymnastic classes	Tuesday 10.45am-11.20am	\$10 per session	Nadine 029 776 7754
Homeshool gymnastic classes	Tuesday 11.45am-12.45pm	\$10 per session	Nadine 029 776 7754
Preschool gymnastic classes	Thursday 2pm - 2.45pm	\$10 per session	Nadine 029 776 7754
Recreational gymnastics	Thursday 3pm - 2.45pm, 4pm - 4.45pm for 5-8 years	\$15 per session	Nadine 029 776 7754
Recreational gymnastics	Thursday 5pm - 6pm for 8 years +	\$15 per session	Nadine 029 776 7754
Zumba Gold	Tuesday 9am to 9.45 am		\$7 Roz rozhumba@gmail.com
Zumba Gold	Thursday 9.30am to 10.15am		\$7 Roz rozhumba@gmail.com
Stretching classes	Thursdays 11am to 12pm		\$5/Lu 4328941
60's up	4th Friday of month 10am to 4pm	\$12 annually fee	Joy 021491887
petanque or indoor bowling	Wednesday 1pm to 4pm		Sue 021860285
Music club	1st Monday of month 7pm to 10pm		\$5/Fulco 0274718428
Zumba	Monday 8.45am to 9.45am		\$8/Janine 021437840
Zumba	Wednesday 5.45pm to 6.45pm		\$8/Janine 021437840
Zumba	Friday 4.45pm to 5.45pm		\$8/Janine 021437840
Move with us	Monday and Friday 11am to 12pm	\$8 or 2 classes \$15	Erin 0224018626
casual gym	Monday to Friday 8am to 2pm	\$2 per day	Christine 4327962
casual Squash	Monday to Friday 8am to 1pm	\$5 per hour	Christine 4327962

We are also home to Bream Bay Squash club and Bream Bay United Association Football club

## WAIPU LOTTO & POST



Lotto  
Postshop  
Photocopying

Emailing  
Newsagents  
All stationery needs



The Centre, Waipu

Phone 432 0900



## WHAT'S ON IN BREAM BAY

- **MEET THE CANDIDATES FOR WHANGAREI IN THE UPCOMING GENERAL ELECTION** On Thursday 21 September at 7pm in the Waipu Prewbyterian Church Hall, 45 The Centre, hosted by Promote Waipu and the Waipu Riding Residents and Ratepayers Association.
- **SIVA SAMOA** Presented by the Fale Pasifika Dance Academy. A showcase of Samoan dance in the Waipu Coronation Hall, 47 The Centre, Waipu. Friday 22 September. Doors open 5pm. Show starts 6pm. Gold coin entry.
- **KARAOKE** Waipu Citizens and Services Club. Come and join the fun. Singers are wanted star 7.00 pm Saturday September 23rd.
- **COMMUNITY BINGO** Wednesday day 27th September calling starts 7.30 Restaurant open 5.30 club open to anyone where Waipu Citizens and Services Club.
- **NORTHLAND CALEDONIAN PIPE BAND** and friends. An evening of Celtic music and entertainment. Saturday 30 September 7pm - 9.30pm. In the Waipu Celtic Barn. Tickets available at Trybooking or from Harcourts, Waipu.
- **ENTERTAINMENT AT THE WAIPU CITIZENS AND SERVICES CLUB** Saturday 9th Sept Featuring Dennis Marsh and Brendon Dugan show starts 7.30 Tickets \$30 available from the club.
- **WAIPU BOUTIQUE SUNDAY MARKET** Next on Sunday 8 October. From 9am to 1pm in the Coronation Hall.
- **ONE TREE POINT ARTISAN MARKET** Next on Sunday 15 October Fundraising for Whangārei Hospital Children's Ward. Sunday 18 June from 9am-1pm. One Tree Point School quadrant and field.
- **WAIPU MUSEUM** 36, The Centre, Waipu. Open seven days 10am- 4pm.
- **THE KAURI MUSEUM**. The Kauri Museum is open 9am-5pm every day except Christmas Day. 5 Church St., Matakohē. See more at [www.kaurimuseum.com](http://www.kaurimuseum.com)

## Marsden Lions donations

In the year 1 July 2022 to 30 June 2023 the Marsden Lions gave away a total of \$22,985.91 to the following recipients:

Alzheimers Northland - \$465, Bream Bay College hockey - \$1,000, Bream Bay College Panimals - \$300, Bream Bay College Senior prizes - \$600, Bream Bay the Learning Community - \$5,119.91, Fred Hollows Foundation - \$200, Kids Can - \$300, LCIF Melvin Jones - \$240, Lloyd Morgan Charitable Trust - \$490, Marsden Playcentre - \$200, Northland Emergency Services Trust - \$5,000, NZ Junior Roller Derby - \$600, NZ Suicide Prevention - \$200, One Tree Point Pony Club - \$500, Petra Currie community worker - \$200, Prostrate Cancer - \$271, Ruakākā Scouts - \$200, Ruakākā Surf patrol - \$2,000, Ruakākā Volunteer Fire Brigade - \$2,000, Spirit of Adventure - \$400, St John Bream Bay - \$2,000, Waipu Pipe Band - \$300, Youthline - \$400.



## THE MAINTENANCE

[www.themaintenance.co.nz](http://www.themaintenance.co.nz)

- ❖ Chemical and non-chemical house washing
- ❖ Window and house cleaning
- ❖ Painting and staining - exterior house, decking and fences
- ❖ Water blasting - decks, driveways and courtyards
- ❖ Clean guttering and downpipes
- ❖ Pest control and spider spraying
- ❖ Tree trimming with extension saw

**Phone now for a FREE QUOTE**

REVITALISE ❖ PRESERVE ❖ PROLONG ❖ MAINTAIN

**TONY 021 196 2949 OR MELISA 021 075 6770**

## TRADES & SERVICE DIRECTORY Ph 09 432 0209

### LAWSON CARTAGE

FOR ALL YOUR  
EARTHWORKS & CARTAGE NEEDS  
Suppliers of: *topsoil, compost, woodchip,  
bark, sand, pebble, rocks and firewood.*

Ph/Fax 09 432 8418 or 021 768 940

458 Marsden Point Rd. PO Box 142, Ruakaka 0151  
email: [lawsoncartage@xtra.co.nz](mailto:lawsoncartage@xtra.co.nz)

### This Space Now available

**\$42.80 gst inclusive  
or for regular customers  
(six or more insertions)  
\$38.50 gst inclusive**



### Bream Bay Tax

Tax  
Accounting  
Business support

Free first consult.  
Fixed price packages  
Supporting Bream Bay businesses

Robb MacKinlay 027 540 7859  
[robb@breambaytax.nz](mailto:robb@breambaytax.nz) [www.breambaytax.nz](http://www.breambaytax.nz)



**BARFOOT  
THOMPSON &**

I Love Selling Bream Bay!

Angelique Hartnett  
Coastal & Lifestyle Sales / AREINZ  
0274 356 411 / 09 435 5914 P  
[a.hartnett@barfoot.co.nz](mailto:a.hartnett@barfoot.co.nz) E

### WhiteWash

Low pressure house cleaning

- Pest control
- Window cleaning
- Roof cleaning
- Gutter cleaning

Murray White

**027 452 2430**

[murray.whitewash@gmail.com](mailto:murray.whitewash@gmail.com)

Spa & Pool chemical sales  
Free water test  
Valet service available



**Poolside** Marsden Cove

**Spa pool  
Displays  
In store now**



16 Waiwarawara Drive  
Ph. 09 393 7755

**Davey  
Water Pumps  
Sales and Service**



[www.poolsidemarsdencove.co.nz](http://www.poolsidemarsdencove.co.nz)

# TRADES & SERVICE DIRECTORY

Ph 09 432 0209

**NORM FAGO**  
OWNER / OPERATOR

**Act Now**  
**Car Rentals**

M: 0274 362 480  
Nz Freephone: 0800 362 480  
E: info@actnowrentals.co.nz

**From \$45 per day - Min 4 days**  
Based in Ruakākā

**Ph: 09 432 0123**

**BREAM BAY GLASS**

FOR ALL YOUR GLASS NEEDS



**Mob: 0274954548**

**AMC**  
AUTO MOBILE GLASS

**FAST WINDSCREEN REPLACEMENTS & CHIP REPAIRS**

- Mobile service or come to our workshop
- Ultra competitive pricing. • Insurance claims welcome.
- Windscreen replacement in under an hour.

**Phone Conrad on 022 036 2916**  
2/17 Gumdigger place.

**BRADLEY**  
**EARTHWORKS**

- POND CLEANING • DRIVEWAYS • RACEWAYS
- LAND CLEARING • TREE REMOVAL • ROADING AND MORE!

**CALL ME TODAY FOR ALL YOUR EARTH & TREE WORKS**  
**PHONE ROY 027 374 5090 WAIPU**

**ABSOLUTE CONCRETE**

[www.absoluteconcrete.co.nz](http://www.absoluteconcrete.co.nz)  
CULVERT PIPES  
Spun and reinforced  
Crane truck delivery  
Drainage Merchant - Hardware Store  
Email: sales@absoluteconcrete.co.nz  
Phone (09) 431 2211  
KAIWAKA

**MACSWAY**  
**SCAFFOLDING LTD**

WE BUILD, HIRE, ALLOY MOBILES, TEMPORARY FENCING, & SHRINKWRAP

Ph: 09 432 7643 • 0274 726 772  
macsway@xtra.co.nz Kapa Road, Ruakaka

**O'MALLEY CONTRACTING LTD | CONCRETE SPECIALISTS**

- FOUNDATIONS
- HOUSE SLABS | STAIRS
- RETAINING WALLS
- DRIVEWAYS | CARPARKS
- EXPOSED AGGREGATE
- COLOURED CONCRETE
- COMMERCIAL | RESIDENTIAL
- LICENCED BUILDING PRACTITIONER

Free No Obligation Quote

FAMILY OWNED & OPERATED

021 2200 198 | [OMALLEYCONTRACTING.COM](http://OMALLEYCONTRACTING.COM)

**Bream Bay Concrete Ltd.**

Free Quotes • Reliable Service • Quality workmanship

- Concrete pads
- Shed floors
- Pathways
- Home floors
- Driveways
- Concrete cutting
- Excavation works
- Retaining walls
- Paving fences
- Profiles for homes & sheds
- Subfloors & boxing

**Mark Royals Ph: 432 0107 Mob: 0274 433 130**

**BREAM BAY ELECTRICAL**

Wiring Safe Homes And Businesses Throughout Northland

RESIDENTIAL COMMERCIAL INDUSTRIAL

0800 223 555 027 35 33 555  
[www.breambayelectrical.co.nz](http://www.breambayelectrical.co.nz)

24H SERVICE



**BAYSIDE CONTRACTORS**

RESIDENTIAL EARTHWORKS • HOUSE SITES  
DRIVEWAYS • TRENCHING & DRILLING

Contact Shane  
027 3019 480  
[admin@baysidecontractors.co.nz](mailto:admin@baysidecontractors.co.nz)

**TC ENGINEERING**  
Metalwork Specialists

Stainless and Aluminium Welding and Bespoke Fabrication

Gates and outdoor furniture. Marine repairs and fabrication.  
Onsite welding for farm repairs and modifications.  
[www.tcengineering.nz](http://www.tcengineering.nz) 021 145 7075 or 021 203 0309

**Tractor Mulching**

100hp tractor with high bodied yllails, mulcher, park finishing mowers, slashing  
Gorse & blackberry spraying

Also mechanical tractor repairs

Phone Bain McGregor  
0274 979 013  
or 09 432 0527



**Grant McLean**  
Stock Agent for Bream Bay

Ph 021 7758 48  
Email: [skincarla@xtra.co.nz](mailto:skincarla@xtra.co.nz)

All aspects of stock sales including:  
• dairy beef • bobby calves • store cattle • live export heifers  
• sheep • pigs • supplying stock for slaughter

Also caters for small block holders.

**Carrfields** **Livestock**

**Ruakaka Motors**

Mechanical and Auto Electrical Repairs and Servicing

**Monday - Friday 7.30am - 5pm**

Tyres and Batteries  
Warrant of Fitness testing  
**Phone 432 7233**

**PARADISE QUARRY**

**PARADISE QUARRY STONEMASONS**

Specialists in stunning stone for landscape  
Suppliers & installers of northland's own schist for all your stonemasonry & landscaping Requirements

(09) 432 2722 or GEOFF (021) 972 139  
[www.paradisequarry.com](http://www.paradisequarry.com)

**SUSAN JACOBS PAINTING**  
INTERIOR • EXTERIOR  
027 370 5339

**BLIND PRO**

Blinds • Awnings • Shutters

Indoor blinds and outdoor screens

Call us today for a free, no obligation consultation and quote

ph 09 423 9661  
website [www.blindpro.co.nz](http://www.blindpro.co.nz)  
email [info@blindpro.co.nz](mailto:info@blindpro.co.nz)

**McQUINN PUMPS**

How's Business? ... It's Pumping!

24/7 SALES, SERVICE & INSTALLATION | PUMPS & WATER TREATMENT  
PHONE SUPPORT AVAILABLE

**0800 627 846**  
PHONE FREE

**NOW AT 72 KIOREROA ROAD**  
—ALONG FROM RDI & ITM

## Deadline for next issue - Wednesday 27 September



# TRADES & SERVICE DIRECTORY

Ph 09 432 0209



**HANSEN**  
Drainage & Earthworks


**DRAINAGE:**  
\* Septic Systems \* Water Tanks \* Truck & Digger Hire \*  
\* Subdivisions \* Domestic \* Commercial \*  
Certifying Drainlayers

Licensed Contractor for  
Waste & Drainage Work



**EARTHWORKS:**  
\* Subdivisions \*  
\* Farm Work: Effluent Pond Design & Build, Dams, Races \*  
\* House Sites \* Driveway Prep \* Lawns \* Roading \*

P. 09 432-7877 M. 027-432-7877  
E. karl@hansende.co.nz



**Team James Alexander**

**JAMES ALEXANDER**  
021 878 178  
SALESPERSON & AUCTIONEER

**ASHLEIGH LOUISE**  
027 733 5703  
SALES ASSOCIATE

Licensed Salesperson: The Real Estate Shop Limited Licensed (REAA 2008)

**Diggermate**  
OPERATING AND HIRE

**CALL GEORGE**  
**027 214 5501**



## Small Building Jobs & Repairs

- Letterboxes • Curtains • Smoke alarms,
- Clothesline • Decks • Fences,
- Kitchen and bathroom repairs
- Rental property maintenance

Call Tony on 021 196 2949

**GREEN DESIGN** LTD  
ARCHITECTURAL DESIGN SERVICES

*Focusing on  
Sustainability & Energy Efficiency*

Contact Simon  
Mob: 021 2845 095  
simon\_duffy00@hotmail.com | www.greenbuilddesign.co.nz



**Long Run Roofing & Cladding**  
Re-roofing & Spouting  
Edge Protection



**Terry Mounsey**  
021 562 269  
wetaroofing@xtra.co.nz

**RELIABLE &  
PROFESSIONAL SERVICE**

**STORAGE  
BREAM BAY**  
76 Waiwarawara Dr, Ruakaka 0171

**Karen Loft**  
Business Manager  
Mob: 021 432 701

Office Hours 9.00 - 1.00  
email: storagebreambay@gmail.com  
www.storagebreambay.co.nz

## LOW COST DRIVEWAYS & SURFACING NEEDS

Concrete or asphalt beyond your budget ...

We have the next best solution for a fraction of the price.

Call for a quote, you'll be pleased you did!

Paradise Quarry Contractors

**Geoff (021) 972 139 or (09) 432 2722**

For contractors who 'think' ...

**Nicola Anne**  
Counsellor, BoSP 2005

Havenging Therapy  
Neuroscience informed healing for trauma

Mob. 027 0817 8204  
nicolaanne.havenging@outlook.com  
Facebook: nicolaanne.havenging

**MPP**  
**MARSDEN**  
PANEL & PAINT

Panelbeating and Spraypainting  
Caravan and Motorhome Repairs  
Tyres New and Secondhand  
Punctures

**470 Marsden Point Rd, Ruakaka**  
Call 09 4330313 24 Hrs or Bert 021 983 724

**M.V.B. Electrical Ltd.**  
Working in Bream Bay since 1977

Repairs • Installations • Advice

**Mike van Blommestein**

Phone: 09 432 1015 • Mobile: 0274 783 749  
Email: mikevanb@xtra.co.nz

**BLINDS  
SHUTTERS  
& CURTAINS**  
Bream Bay Whangarei & Districts

**Rollers, Venetians, Verticals  
Shutters, Curtains & Outdoor Blinds**



Ask about our DISCOUNT for households  
Free in-home measure & quote  
Free Installation

**Phone Gail 0211 95 35 35**

**www.blindsandshutters.co.nz**

**GRAEME BINT**  
**FENCING**

GOOD RATES, NO JOB TOO SMALL  
09 432-1599 or  
027-292-2833  
grbint@xtra.co.nz

**MANGAWHAI SMALL ENGINES**  
Grasshopper, Husqvarna and Honda dealer




194 Molesworth Drive, Mangawhai  
Ph: 09 431 5270 or Mb: 021 655 481  
Email: msengines@xtra.co.nz

**BREAM BAY  
ACCOMMODATION**  
**RUAKAKA**

**STUDIO - HOLIDAY HOMES - B&B**  
BOOK ONLINE OR PHONE  
Ph: 09 432 7025 Mob: 021 2722 739  
website for online bookings: www.breambayaccommodation.com

## This Space Now available

**\$42.80 gst inclusive**  
or for regular customers  
(six or more insertions)  
**\$38.50 gst inclusive**

**BREAM BAY NEWS PHONE 09 432 0209**

Email: breambaynews@xtra.co.nz

Post copy to : Bream Bay News, RD 2, Waipu  
Email: breambaynews@xtra.co.nz  
or leave it at the Waipu or Ruakaka Post and Lotto Shops

## FOR SALE

**HAY** Conventional bales and baleage. Top quality.  
Phone 027 432 0351.

## WATER TANKS

09 431 2211

sales@absolute  
concrete.co.nz

**RAWLEIGH'S PRODUCTS** Independent dealer. Ointments back in stock. Phone Susan McRae 027 227 2291.

**WORMS FOR SALE**  
For worm farms  
Phone 432 0209  
or text 027 432 0070

Scooters Plywood  
3mtr Scaffold Planks \$77  
12mm H3.2 NS  
Plywood \$79.00  
Ph 438 6565

## WANTED

**VEHICLES WANTED.** Top cash paid For any VANS, UTES, TRUCKS, 4X4, Dead or Alive, damaged, de-registered Mechanical problem, no WOF we buy it. Call 0800 333 398

**OLD NEWSPAPER** Copies of the Bream Bay News, Advocate, Herald, Leader, Weekend Lifestylar, or Mangawhai Focus for recycling as erosion control. Waipu Lions fundraiser. Phone Dave Bell 09 432 0861.

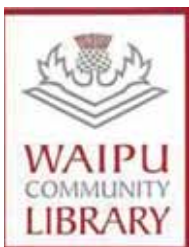
## PERSONAL

**TIDY SINGLE MALE PENSIONER** 68 seeks another single male pensioner late 60s 70s for friendship company and more. Ph 028 462 408

## WELL BEING

**THERAPY FOR MENTAL AND PHYSICAL WELL-BEING.** Practical solutions for anxiety depression or personal growth. Affordable and effective. Melinda 021919898

## LIBRARY HOURS



Monday, Wednesday,  
Thursday, Friday &  
Saturday 10am - 1pm.  
Tuesday 10am - 4pm.  
Phone 432 0375



Ruakaka Community Library  
Takutai Place, Ruakaka  
432 8406  
Mon - Fri 9:30am-3:30pm  
Sat 9am-1pm

JP Service available  
Saturdays 10am - 11am.

## THE NEXT PUBLICATION DATE

of the Bream Bay News will be Thursday 5 October  
The deadline for all copy is 4pm on  
Wednesday 27 September

## SERVICES OFFERED

### NORTH LAND HEADSTONES

Located in One Tree Point  
Your Local Headstone Showroom  
Call 0800 707 800  
www.northlandheadstones.co.nz



**PHOTOGRAPHER AVAILABLE.** Waipu, Commercial, real estate, weddings, documentary, aerial, drones, events. Ph: 021 139 2553.  
EIGHTYTHREEPHOTO.COM

### Waipu Boarding Cattery

Excellent care and accommodation  
Ph Sue 432 0394



WATER TANK CLEANING

No need to empty your tank

• Vacuum or full scrub  
Phone Mark Draper  
0274 707 607

### JD LAWN CARE SERVICES PH. 021 063 7907

Lawn mowing, Weed spraying,  
Water blasting, surface cleaning of  
driveways, paths and patios, Hedge  
trimming, Section clearing, tree  
pruning, wood chipping and more.

## SOCIAL SERVICES

LINKING HANDS  
Health Shuttle  
Phone (09) 431 8969



## CLASSES



CLAIRE NICHOLLS ART  
& WORKSHOPS

- Kids after school art classes
- Casual drop in clay
- Adult clay classes
- NZ sculptures for sale or commission

021 272 2294 | claire@sculpturenz.com | sculpturenz.com

## SOCIAL SERVICES



### Safeman Safe family Men's Centre

Safeman Safefamily offers a safe place for men to talk privately without judgement and with complete confidentiality.

We are peer led and professionally supported and offer a range of services and support for men and their families.

The services we provide are as follows:

- Advocacy Navigator
- Court support
- FGC Support
- Probation Community Service Provider
- Legal Advice
- Marriage Celebrant
- House and property blessing
- One to one counselling
- Drug and Alcohol support
- Anger management group sessions
- Supervisor for court ordered access
- Work brokers/ help with employment opportunities.

No appointments are necessary, we have an open door policecu - if you need help or know someone that does just come on down to: **9 Takutai Place, Ruakākā.** We are right next door to Jimmy's Barber Shop or I can be reached by phone 021 121 0763 - Phil Paikea

### Bream Bay Community Support Trust



Takutai Place, Ruakaka Phone: 09 432 7197

#### Services we provide:

- Registered Social Workers
- Family Support Workers
- Youth Workers
- Youth Hangout Space (watch this space...)
- Youth Holiday Programme
- Community Connectors  
(Connecting community to various services)
- Free Whanau Ora Medical Clinic with Ki A Ora Ngatiwai. Wednesday mornings 10am-12noon, by appointment only phone 09 435 4586
- Free Budgeting Service – Tuesdays 10am-12pm by appointment
- Mana Wahine Ki Wahine Toa, women's group
- Ha Tane – men's group
- Listening Ear – need to talk? Mon-Fri 9am-4pm no appointments necessary, cuppa and a listening ear available

**Waitata Sessions** 12:30pm every Wednesday, in our hall, come along for a sing along.

**Community Connections** 10:30am-12pm every Friday in our hall. Hot soup and cuppa available. The purpose of these sessions is for the community to get together and partake in different activities together, getting to know one another, sharing talents/hobbies/passions creating connections in the community, building friendships. The session topics are

#### Coming up:

- Friday 22nd September – Learner Ukulele.
  - Friday 29th September – Poi and Ti Rakau making workshop.
  - Friday 6th October – Thai Cooking demonstration
- Follow us on social media – Facebook and Instagram for updates on what's happening here during the week.

www.bbtrust.co.nz



## SITUATIONS VACANT

### PROMOTE WAIPU IS LOOKING FOR A TREASURER.

If you have accounts experience and extra time, please consider this opportunity to assist us in our vibrant community. Full training available and financial contribution towards expenses provided.

Email treasurer@promotewaipu.co.nz.

Check out www.promotewaipu.co.nz for more information on what we are about

**WANTED - A PERSON TO LOOK AFTER AND MAINTAIN A COLLECTION OF CLASSIC VEHICLES.** Old school mechanical knowledge needed. Flexible working hours. Full or part time. Please contact Dave 021 947 710

### ULTIMATE CARE RANBURN - PART TIME GARDENER ,

Flexible hours, full training will be given..

APPLY TODAY by sending your CV to:  
admin.ranburn@ultimatecare.co.nz.

## MARKETS



**OTP ARTISAN MARKET**  
PH 021 530 153  
Fundraiser for Whangarei Hospital Children's Ward  
Spaces available  
Spaces available PH 021 530 153

## JUSTICES OF THE PEACE



### Justices of the Peace

<b>Ruakākā</b>	
Paea Paki	09 432 8262/021 149 1625
Darrell Trigg	09 432 7256/021 332 901
Ken Orr	09 432 8215
Wayne Buckland	022 644 5376.
<b>One Tree Point</b>	
Jules Flight	0274 777 210
Sir John Goulter	021 612 442
MM Jolley	027 415 9486
Ian Bogue	0274 300 418
Grant Brown	027 248 7126
<b>Waipu</b>	
Trevor Vaile	021335 075
Doug Scott	027 229 9752
Ken Couper	027 292 0524
Angela Stolwerk	021 823 966
Chris Martin	027 367 2947

Make contact with a Justice of the Peace (on any day) and make an appointment to have your documents completed.  
A service desk also operates 10am to 11am on Saturdays in the Ruakaka Library.

## PUBLIC NOTICES



### Bream Bay Medical Centre Ltd.

**Ruakākā Town Centre, Ruakākā**

**Monday - Friday: 8.30am - 5pm**

**Saturdays: 9am - 12pm**

**Marsden Cove Medical Centre**  
**1A Ngawaka Lane, One Tree Point**

**Monday - Friday: 8.30am - 5pm**

Please advise at time of booking  
if you require an extended consultation

**Ph: 432 8060**

**New patients welcome**



### Marsden Bay Garden Club



Monthly Meetings held  
3rd Thursday of the month.

**ALL WELCOME**  
1:00 pm – Ruakākā Hall  
– Sandford Rd  
Contact – Secretary –  
0210515581

### WAIPU TO WAIPU COVE CYCLE AND WALKWAY TRUST AGM

Wednesday 4th October  
7 pm  
at the Waipu Cove  
Surf Lifesaving Club

### TAKAHIWAI MAORI COMMITTEE

established 1977

Triennial Election, 1 October 2023, 11am,  
478 Takahiwai Rd.

Agenda: To confirm the Trustees.

Acting Chair: T.M.A. Kepa  
tkep001@gmail.com

### Waipu Cove Surf Life Saving Club 2022/23 Season

## AGM

Sunday, 15 October, 1pm  
@ Waipu Cove SLSC clubrooms

Please forward any nominations  
for election of club officers  
and any items for business by  
Sunday 1st October

## ALL WELCOME

Followed by Potluck dinner



## CLASSIFIED ADVERTISING

Costs \$5.50 for up to 20 words and 20c for each additional word.

Boxed, classified adverts cost \$16.50 gst inc.

Phone your advert through to 432 -0209

email it to breambaynews@xtra.co.nz

Post to: Bream Bay News, RD 2 Waipu 0582  
or leave it with payment at The Waipu Post Shop or  
the Ruakākā Gift and Lotto Shop

### BREAM BAY 60's UP

WHERE: Ruakaka Recreation Centre  
9 Takutai Place

WHEN: the 4th Friday of the month  
At 10:00 am for games, indoor bowls etc.

Speaker or Entertainer at 1:30 pm

Monthly bus trips.

New Members Welcome

### BLESSING OF THE ANIMALS ON THE FEAST OF ST FRANCIS



Bring your four-footed, furry, and finned friends to a celebration of their lives and the love you share with them!

Saturday, 7 October, 10:30 am,

St Paul's Anglican Church, Ruakākā

All animals must be on leads, caged, in bowls, or otherwise securely restrained.

Your stuffed animal friends

are also welcome!



### BREAM BAY SUNDAY CHURCH SERVICES

**Presbyterian** Camellia Ave, Ruakaka:  
8.45am. The Centre, Waipu: 10.15am.  
Prayer Service: 7pm

**Encounter** 223 Marsden Pt. Rd,  
Ruakaka, 10am.

**Anglican** 1st and 3rd Sundays - St Paul's  
Ruakaka 2nd and 4th Sundays -  
St Peter's Waipu. All services start at  
9.30am.

**Catholic** Holy Family Church,  
Ruakaka, 10.30am. Mass or Liturgy of  
the Word

**Lifepoint.** 300 OTP Rd, 10.30am.



## Harcourts Waipu



**End of Cul-de-sac in Nova Scotia** WAI2555  
**SET DATE OF SALE**  
 Closes Friday 29th September (unless sold prior)

- 612m2 site – fully fenced, private backyard
- 4 bedrooms – master with ensuite
- Open plan kitchen, dining and living area
- Separate lounge with heat pump
- Backyard - secure place for the kids to play
- Internally accessed double garage
- Flat stroll to Waipu village

Lyndie Mullins 021 101 6389



**House Site Ready + Reno Shed** WAI2554  
**\$649,000**

- 5183m2 block nestled in rural tranquility
- Large 200m2 renovated shed with new mains electrical, wiring, cladding and internal lining
- Workshop area 8m x 8m with a mezzanine
- Perfect workspace with amazing storage
- Flat building site with no covenants
- Installed electrical pole to plug in the caravan
- 20-minute drive from Waipu village

Christine Tierney 027 488 1883



**Priced Reduced on Watch Lane Beauty!** WAI2335  
**\$985,000**

- Immaculate 3-bedrm/2-bathrm home
- Expansive manicured 1175m2 site
- Modern, spacious, and warm
- Heat pump in lounge and master bedroom
- Quality fixtures and fittings
- Built by Platinum homes in 2016
- Situated at the end of a cul-de-sac
- Easy walk to Waihoi Park and Waipu


Lyndie Mullins 021 101 6389

Harcourts Waipu | T: The Centre, Waipu | 09 432 4000  
 Waipu Real Estate Ltd Licensed Agent (REAA 2008)

## Frazerhurst


Curtains | Blinds | Awnings | Screens

40 years in Whangārei



Come and talk to us about your window furnishing requirements

- Free measure and quotes
- Free loan sample service
- Whangārei Showroom
- Satisfaction guaranteed



Blinds | Awnings | Shutters | Umbrellas

146 Lower Dent St.  
 Whangārei  
 Ph: 09 438 3986  
[www.frazerhurst.co.nz](http://www.frazerhurst.co.nz)



**BREMBAY REALTY LIMITED (LICENSED: REAA 2008)**

Shop 11 | Town Centre | Ruakaka 0116 | NZ  
 PH: 09 433-0300 | [bbrealty.co.nz](http://bbrealty.co.nz)  
[info@bbrealty.co.nz](mailto:info@bbrealty.co.nz)

Proud sponsors  




**CENTRAL 10 ACRE BLOCK**  
 A rare find in a sought-after location. Sandy, black peat soil and currently maintained by way of maize planting and stock grazing, this land is a flat rectangular shape. Wide road frontage and exposure on One Tree Point Road lends itself to lifestyle possibilities. [#4163](http://bbrealty.co.nz)  
 Price \$700,000 + GST (if any)  
**FRANCIE STOKES**  
 Mob: 022 656 0165



**SNAP UP THIS BARGAIN!**

- Land Bank or Build.
- One Tree Point
- North-facing
- Opposite park

Level building site amongst quality homes. Ring me for a list of Covenants.  
 Price \$299,000 | [#4158](http://bbrealty.co.nz)  
**JOANNE DEWSON AREINZ**  
 Mob: 021 780 622



**Price Adjustment**

**A PEARLER HARBOURSIDE**  
 Spacious and private well loved home on large section. Wide hallways, open plan living, opening to covered portico. Separate lounge or media room. Three large bedrooms, two bathrooms, both with underfloor heating. Private walkway leads to beach access off Graham Street.  
 Price Now \$995,000 | [#4151](http://bbrealty.co.nz)  
**JANINE GOLDSMITH AREINZ**  
 Mob: 021 432 793



**LIVE THE GOOD LIFE**  
 A beautifully maintained sun filled home. The well-appointed kitchen & living areas all open to the North facing patio & large Archgola with drop down blinds. The three bedroom, two bathroom home is well laid out, with significant amounts of storage space. Perfect and private.  
 Price Now \$990,000 | [#4104](http://bbrealty.co.nz)  
**JANINE GOLDSMITH AREINZ**  
 Mob: 021 432 793



Once again I had the opportunity to sponsor a team from Bream Bay United Football Club in conjunction with Bream Bay Storage. After a slow start to the season, with wet fields to practice and play on, this group of youngsters had a fabulous season, with help from their coach Richard who is just as proud of them as we

**FIONA SOUTHERN MNZM**  
 Mob: 021 317 775 | [fiona@bbrealty.co.nz](mailto:fiona@bbrealty.co.nz)

