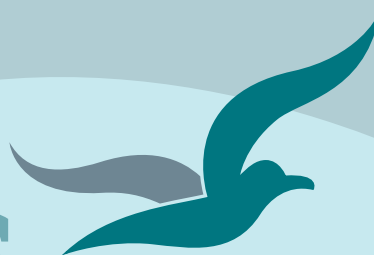


Bream Bay News



Est.1967 | Locally owned and operated | Delivered FREE twice a month 22 FEBRUARY 2024

Affordable Quality

- * SECURITY DOORS
- * INSECT SCREENS
- * SHOWER DOORS
- * BLINDS
- * AWNINGS
- * WARDROBE SYSTEMS

www.homeplus.co.nz



34 Albert St
Whangārei

Est. 1977

PH: 438 9452

whangarei@homeplus.co.nz

A healthy dune is money in the bank against the next storm

Beach and dune recovery from the severe coastal erosion caused by the massive sea swells generated by Cyclone Gabrielle could take decades according to Professor Murray Ford coastal geomorphologist at Auckland University.

What's more he thinks recovery is uncertain given accelerating rates of sea level rise and potential for further erosion over winter when the coast is exposed to stormier conditions.

He said that as well as eroding the dunes the cyclone lowered the beach levels increasing the susceptibility of to further erosion.

Northland Regional Council's Coastal Biodiversity Advisor and Coast Care Coordinator Laura Shaft is interested in how the type of vegetation present on and behind the dune influences its recovery. Her NRC coastal science team carries out ongoing transect studies at various coastal sites around Northland including along Bream Bay looking at vegetation cover and measuring dune profile.

Laura found the impact of Cyclone Gabrielle and the other storms of summer 2022/2023 varied considerably around Bream Bay, with Bream Tail providing protection to the more southern sites and the areas in the middle of the bay experiencing most erosion. At Waipū Cove the dune toe retreat varied between 2metres and 5metres. By contrast, the retreat of the dune near the Ruakākā Surf Club was up to 12.5metres and up to

Continued on page 8

Have a Go Sports Festival in full swing



Kiarn Cherrington, aged 12, had a successful day catching yellow eyed mullet from the riverbank at the Waipu Boat and Fishing Club's Have a Go Sports Festival event. .

The first event in the Bream Bay Sports Trust Have a Go Sports Festival was family friendly fishing at the Waipu Boat and Fishing Club's base in Nova Scotia Rd. from 11am to 1pm on Sunday 11 February. Fishing club members cut up bait, untangled lines, weighed in fish and cooked barbeques sausages for the dozen or so children who turned up.

The festival runs for a month until Tuesday 19 March with indoor bowls, football, croquet, tramping, walking, pickle ball and sailing amongst the events still to come.

See the full calendar of Have a Go opportunities on page 10.

More photos on page 7



Langs Beach 8 Kingswood Place

760 sqm 4 3 1 2

Price by Negotiation

Christine Birss 027 235 4323 christine.birss@bayleys.co.nz

MACKYS REAL ESTATE LTD, BAYLEYS, LICENSED UNDER THE REA ACT 2008

Primo position to enjoy views along the beach

Positioned to enjoy the fantastic views along beach, and out over the sea. Some days there is barely a ripple on the water. Other days it's quite mesmerising to watch as the waves roll in to the beach, often with multiple surfers spread along length of the beach.

Main master bedroom occupies entire top level. Spacious with its own deck, plus a generous ensuite and WIR. Enjoy the beach and sea views from your bed, or laze on a deck chair and listen to the surf.

Opportunity doesn't knock twice. Listen to your inner voice and make a time to visit soon.

bayleys.co.nz/1153560

BAYLEYS

Cyclone Gabrielle one year on



Last week was the one-year anniversary of Cyclone Gabrielle (Valentines Day 2023, and what a Valentines Day present it was!). Over the past week, we have seen various articles and media releases talking about the loss of life and the damage caused to New Zealand, and many of us are still dealing with our own issues caused by Cyclone Gabrielle and subsequent extreme weather.

Dome Valley, the Brynderwyns and the Mangamukas are three sections of State Highway One in Northland that were severed, stopping businesses, creating traffic issues, and increasing the costs for transportation of goods. Subsequent reports have found the Brynderwyns 58-day closures cost Northland a minimum of approx. \$2M a day, a total of almost \$115M, and due to long-term underfunding, the damage to the two bypass routes (Cove Road, and Paparoa-Oakleigh) also came to almost \$110M.

One year on and the New Zealand Transport Agency (NZTA) Waka Kotahi have been working on all three sections of the State Highway, along with providing additional funding to fix up both Cove Road and Paparoa-Oakleigh Road. If you have travelled over the Brynderwyns lately you would have seen the contractors forcing the traffic to drive slowly, reducing the road to one lane, and even transporting fill and doing construction work so that they are ready for next week's \$61M closure for 9 weeks, which will give this section of SH1 a life extension of another 5 years. This will be the last big repair work on the Brynderwyns till the completion of the four-lane expressway!

Meanwhile, the cruise ship season has started for Northland, with Whangārei's first official cruise ship (docked at Marsden Point on 4 February) being hugely successful. Many of the Whangārei hot spots, like the Hundertwasser Art Centre with Wairau Maori Art Gallery, Kiwi North Museum, Kiwi House and Heritage Park, Quarry Gardens, and the Whangārei waterfront, received some needed income injections, and those away from the city benefited too, like the SH12 Kauri Museum and Waipu Museum.

Northland has so much to offer the world, from our beautiful natural landscapes, native bush scenes and our history, to our innovative and creative communities; this is what attracts visitors and keeps them coming back for more. There are a lot of events planned for Whangārei over the next few months, from Street Sprints to Artbeat, International Rugby and Food and Wine Festivals – our city has a lot going on! This is why I love Whangārei, where else can you go in the world and see what we have at our doorstep every day.

Of course, a vibrant, healthy city needs good foundations. When I became Mayor of Whangārei, I said we needed to focus on our infrastructure, as I believe we need good foundations to grow from. With the Three Waters bill being overturned last week, control has been given back to the people to have a say over how Whangārei grows. Our long term strategic planning helps shape this growth, and with increased construction costs, insurances, and our Districts high growth, it is more important than ever for you to get involved. Consultation will begin in late March for a month, get ready to have your say.

Vince Cocurullo

Mayor, Whangārei District Council

The Bream Bay News

is published by Bream Bay News Ltd. Address : RD 2, Waipu
Phone : (09) 432 0209 Mobile: 027 432 0070 Email : bream-baynews@xtra.co.nz

Website: www.breambaynews.co.nz

Editor: Marilyn Cox . Accounts : Susan McRae. Technical assistance... Geoff Spencer

Advertising design and website maintenance... Megan Lea.

Printed by NZME

We distribute 5900 copies twice a month in Ruakaka, One Tree Point, Waipu, Mangawhai and Maungaturoto

EDITORIAL

The simple pleasure of riding a bicycle

On the beach this morning there was: a woman jogging along with a dog and what I thought was another big white dog but on closer inspection turned out to be a small pony. There was a couple enjoying a beach ride on matching e-bikes, a man sending a drone far out over the waves to drop his weighted and baited fishing line, a young woman emerging from the sea like a mermaid, a deeply tanned woman with a mop of white curls picking up plastic rubbish and wondering how to dispose of it as the Uretiti Camp Ground no longer provides a rubbish collection, a black oyster catcher foraging at the water's edge. On the horizon out at sea there were three ships waiting to come into port. All along the beach new sand dunes are forming at the base of the steep cliff face calved out by Cyclone Gabrielle and all the other storms of last summer. Lots of tyre tracks broke up the smooth perfection of the sand and likely are impeding the dune recovery cycle. I went for a walk to think about what to write in this editorial but there were so many interesting things to look at I got a bit distracted.

Back at my computer I find an email message from Geoff, my husband who set out on the month long Tour Aotearoa bike ride from Cape Reinga to the Bluff at 7am this morning. It wasn't exactly a message from him but some kind of AI generated tracking of how he is progressing along 90 Mile Beach - the magic of technology! I imagine him pedaling along that long shadeless stretch of sand. I hope he has applied lots of sunscreen and has the back of his neck covered under his bike helmet.

Bicycles and cycling are front-of-mind for me at present and a thought came to me this morning watching that happy cycling couple that a cycle ride along Bream Bay might be an activity to offer visitors arriving on cruise ships. The Captain of the Regatta, the first cruise ship to be welcomed to Northport, told me the first thing he noticed coming into the harbour was our long white sandy beach. Hiring out bikes, supplying picnic lunches and shade umbrellas at a given point along the beach might be a lucrative business opportunity for some enterprising person.

I am trying to think of how we can complete the final middle section of the Waipu to Waipu Cove trail. It's no use looking to NZ Transport. The Minister of Transport Simeon Brown has ordered NZTA to push the pause button on all its cycle way projects. Our local Council tends to only fund projects which get subsidized from the Government so we are unlikely to get any help from this source either. In addition I am not sure how will we get started on the much-needed safe shared path trail between Marsden Cove and the Ruakākā Shopping Centre?

I have been avoiding riding on Nova Scotia Rd. over the summer because of the heavy traffic there, which will only get worse when State Highway One over the Brynderwyns closes next week. It would have been good if the spend on repairs and upgrades of the bypass routes could have included forming a safe walking and cycle trail alongside this road. This could also have been another opportunity to finish the Waipu to Waipu Cove trail. I did send a letter via Councillor Phil Halse to the Northland Transportation Alliance about this but I don't expect the suggestion will get picked up anytime soon.

Another section of road that needs to have a safe cycle lane alongside is the short, less than a kilometre long, piece of State Highway One between Marsden Point Road and Marsden Point Rd. Many cyclists from Ruakākā and One Tree Point like to come up Doctors Hill Rd. to access the quieter country roads west of the highway. The central barriers, which have been put in place on the highway, leave less room for cyclists making it extremely dangerous to ride here. There is ample space on the roadside for a cycle lane. It shouldn't be an expensive problem to fix. Next Sunday 25 February from 9.30am to 2pm, Bike Northland will be at the Marsden Cove Marina to celebrate cyclists and cycling. There will be tips on basic bike maintenance, bike riding, how to set up your bike to suit your individual body shape and size and the opportunity to climb on board a log truck to see where the blind spots are for its driver.

I like this quote from J.F. Kennedy published underneath a photograph of a cute little girl with her tiny pink bike in a book by New Zealand cycling gurus The Kennett Brothers. "Nothing compares to the simple pleasure of riding a bike."

This rings true for me when on a late summer morning I ride my bike along Shoemaker Rd. into Waipu past fields of maize and happily grazing cattle. I imagine the many people who come cycling past our gate, those I see on the Waipu Cycle Trail or on those who brave the treacherous roadsides around Ruakākā and One Tree Point share this sentiment.

Marilyn

Vet centre, now an independent, privately owned practice

This month The Vet Centre, with its five branches in Waipu, Ruakākā, Maungaturoto, Ruawai and Mangawhai, is entering a new era

The business that has been run by Otamatea Veterinary Club for 64 years, has now been handed over to four veterinarians who are working within the Vet Centre. From February 2024, The Vet Centre has changed hands to new owners to become an independently owned, private practice.

The Vet Centre was started in 1960 as the Otamatea Veterinary Club, founded by local farmers to encourage and attract veterinarians to the area and provide services to their farming businesses. This was a very common model at the time and hugely successful. However, the local demographic, along with farming operations has changed in the last 60+ years, and it was considered time to transition to a new business model with an owner/manager structure. The Otamatea Veterinary Club will remain functional and provide sponsorship and funding opportunities to the community.

The four veterinarians have worked in the practice for many years. Dr. Emily Buswell started as a new graduate 10+ years ago and has made her mark in both the Mangawhai and Waipu clinics. Dr. Thomas Traill also started as a new graduate veterinarian, then worked in Palmerston North for a few years before returning to The Vet Centre Maungaturoto and Ruawai clinics. Dr. Andy David moved to the Mangawhai clinic three years ago and is a very experienced and respected small animal surgeon. And lastly, Dr. Sarah Briggs, who has been working with the dairy cows of Waipu for five years now.

They have entered into a collaborative relationship with Franklin Veterinary Services Ltd, an ex-veterinary club turned independent practice that has grown to become one of the most successful in the Waikato/Auckland/Hauraki region, to provide back-office support to the team to enable the clinical shareholders to focus on being veterinarians.



Kallum Green (Tech), Liam Bawden (Vet), Janine Hazelwood (Customer service), Amy Fryer (Nurse), Sarah Briggs (Vet + owner), Kate Logan (Nurse), Maddy Shepherd (Customer service), Emily Buswell (Vet + owner), Aimie Sands (Nurse), Ellie Green (Vet), Sue Crow (Vet), Kylie Shepherd (Customer service).

School rolls at the start of 2024

Ruakākā Primary had 309 children enrolled on Friday 9 February, which is a slight drop from its roll 315 at the start of 2023.

Waipu Primary began the year with 235 children enrolled down by five on its 2023 start of year roll of 240 children.

One Tree Point School started the year with 190 children, eight more than it had at the beginning

of 2023.

Bream Bay College had just over 600 students enrolled at the end of last week, which is up from 572 students on the roll at the beginning of March 2023.

In total there were 1,334 children and young people enrolled at Bream Bay's four schools last week which is just 25 more than were enrolled at the start of 2023. The big residential developments in Waipu, One Tree

Point and Ruakaka haven't resulted in a huge increase in the number of children and young people attending our four schools.

Councillor Phil Halse made the point at a recent community meeting on the proposed 50 new homes Kāinga Ora development in the Ruakākā Village.

He said most young families and young working people can't afford those million dollar plus homes being built in One Tree Point



ORDER A SKIP BIN ONLINE
MARSDENWASTE.CO.NZ

CASH PAID FOR SCRAP

ALUMINIUM COPPER STEEL
STAINLESS BRASS ELECTRIC-
BATTERIES LEAD MOTORS



Metal & Waste Recycling Group

**FOR THE BEST PRICES AND
THE BEST SERVICE**

MMG.CO.NZ

0800 33 66 73

Unichem

Orrs Pharmacy



Athletes foot

Is the skin between your toes peeling? Do your feet have a rather whiffy aroma? If so, you may well have athletes foot.

Although the experts are divided as to whether athletes foot



(Tinea pedis) is worse during the heat of summer - or the cold winter months when your feet are couped up in shoes all day - either way this condition can spread like wildfire through your household unless treated immediately.

Athlete's foot is caused by a group of fungi called dermatophyte fungi that grow in warm moist environments and can cause infection in the skin. It spreads easily through direct skin-to-skin contact or indirectly through contact with infected surfaces – like sharing towels, shoes and bath mats. It can also be caught by walking barefoot in warm damp areas like communal showers, gyms, swimming pools or changing rooms. Secondary infection can occur if skin is split, bleeding, or blistered.

Athlete's foot commonly affects the skin between the toes – particularly between the fourth and small toe. The skin may appear soft, white and peeling but can also be red, itchy and scaly. It can also sometimes spread to the sole of the foot where it appears dry, cracked and scaly. Other symptoms include itching, burning, stinging, small blisters, fissures (splitting) and bleeding.

The good news is that athletes foot is easily treated by using creams and powders.

Antifungal creams work by preventing fungi from multiplying (fungi-static), or by killing fungi directly (fungi-cidal). Fungi-static antifungal creams need to be applied for approximately two weeks after the infection has cleared, while fungi-cidal antifungal creams can be stopped once the infection has cleared.

Antifungal powders are good for dusting in shoes or socks to kill residual fungal spores and prevent reoccurrence, while corticosteroid creams help reduce itch and inflammation. Corticosteroid creams must be applied sparingly and used strictly according to product recommendations and the advice from your community pharmacist.

It is a good idea to talk to your community pharmacist for advice on using these products. Some products contain both an antifungal and a corticosteroid so you will need to ensure treatment is not duplicated.

Your community pharmacist can also advise you on making lifestyle changes so that you can minimise the risk of getting athletes foot in the future.

LETTERS

Sand ladder - an adaptive solution in a dynamic coastal environment



DOC staff met with Ruakaka Residents and Ratepayers Association members to discuss the Mair Rd sand ladder

I am writing in response to the recent letter Janet Woodward (Bream Bay News 25/1/24) expressing concerns about the accessibility and safety of the sand ladder access to the beach at Mair Road, particularly for elderly and young individuals. While I understand and empathize with these concerns, I would like to provide some clarifications and updates regarding the actions taken by the Department of Conservation (DOC) in response to the feedback received.

Firstly, I want to acknowledge that the DOC values public feedback and takes it seriously. Following discussions with the Ruakākā Ratepayers Association, we took proactive measures to address some of the issues raised. Specifically, we shortened the steps and added more steps to allow for better sand dispersion and a more manageable gradient. These adjustments have already had some positive feedback from the public, indicating an improvement in accessibility and safety.

However, it is important to acknowledge that while these modifications have enhanced the sand ladder's usability for many, it may not cater to the needs of all individuals and it's essential to recognize that the sand ladder serves as an adaptive solution in a dynamic coastal environment. Coastal areas face constant challenges, including weather events, coastal erosion, and slope instability, which can impact the performance and safety of structures like the sand ladder. Additionally, we will install safety signage to alert users about steep steps and potential hazards. There are alternative beach access points that are more suitable for a wider range of users, especially those requiring additional facilities such as public toilets.

I want to emphasize that the DOC is dedicated to conservation efforts, including the preservation of coastal ecosystems. Limiting the number of beach access points and divesting non-resilient structures aligns with our commitment to coastal care and sustainability.

While the sand ladder at Mair Road may not be a perfect solution for all beachgoers, it represents our ongoing efforts to balance accessibility, safety, and environmental conservation. We appreciate the community's engagement and feedback, which inform our decisions and actions. As we continue to navigate the complexities of coastal management, we remain open to constructive dialogue and collaborative solutions.

Joel Lauterbach
Operations Manager | Whangārei District | Northern North Island
Department of Conservation | Te Papa Atawhai

WAIPU LOTTO & POST



Lotto
Postshop
Photocopying

Emailing
Newsagents
All stationery needs



The Centre, Waipu

Phone 432 0900

LETTERS TO THE EDITOR ARE VERY WELCOME

Email them to: breambaynews@xtra.co.nz

Drop them off at the Waipū or Ruakākā Lotto shops

Or post them to: The Bream Bay News, 547 Mountfield Rd., RD2 Waipu, Postcode 0582

Reunited with the watch he lost sixty years ago

Doug Barge was reunited with a watch he lost almost 60 years ago last week thanks to some detective work by Neil Troost and Sonya Mrsich of Waipu.

Neil and Kathy Troost purchased a property at the end of Ferry Rd., in Waipu last year. Neil was clearing away some elaeagnus from a fence line just above the Ahuroa River when his ten-year-old son Flynn who was helping clambered down the bank to play at the water's edge. Within a minute Flynn called out that he had found a watch. Flynn said it was sitting on a rock just above the waterline. Neil thinks they must have been dislodged it while clearing the vegetation. Intrigued, he set about solving the mystery of how it had come to be there.

The property had once been the dairy farm of Paul and Sonia Mrsich so he sent a photo to their son Vince who said the watch was not his.

A couple of weeks later Sonya called in to visit and Neil showed her the watch.

She gave it "a bit of a spit and a polish" and uncovered the engraving D.W.B 1953 on the back.

Around 1953 the farm had been owned by the Bowmar family, so Neil and Sonya thought they were on to something. However, Sonya phoned that afternoon with another lead. She said Doug and Jean Barge worked for her and Paul for a few years in the mid sixties. She had found an old phone book and established Doug's middle initial is W.

Neil got in touch with Jean using the Messenger App and it turned out that Doug remembered losing the watch in August of 1965 when he was clearing gorse along the riverbank.

Doug said he had followed his father's practice of taking his watch off his wrist and wrapped it in his handkerchief when he was doing physical work.

The watch was given to Doug by his father when he started at Whangārei Boys High School in 1953. He said the watch was a Swiss make and had been purchased from the shop of Bill Maurier in Rathbone St., Whangārei.

Doug said he had enjoyed working for Sonya and Paul who had encouraged him to take on his family's farm at Maunu. Doug and Jean lived there for 20 years before selling the farm to the Whangārei District Council to become the Barge Park showgrounds.

They purchased a farm at Maungatāpere, which was taken on by their eldest son. Alongside running the farm Doug volunteered at the Whangārei Museum, working the bullock team and supervising Periodic Detention workers sent there. There were eight



Ten-year-old Flynn Troost gave Doug Barge back a watch he found amongst mud and rocks at the edge of the Ahuroa River. Doug had lost the watch 60 years earlier while clearing gorse at the river's edge.

bullocks in a team Doug would lift the heavy yokes to harness them up: with the two leaders in front the two biggest animals next in line and two learner bullocks at the rear.

Doug said he enjoyed his visit back to the Ferry Rd. farm and was astounded by all the houses that have been built along the street.

Doug and Jean now live at Whananaki North. He expects the story of the lost and found watch will become part of family folklore and the watch itself will be handed down to his children and grandchildren.

Right: After a bit of "spit and polish" the inititails D.W.B could be deciphered on the back of the watch .



Building in Whangarei, Kaipara, Far North



The Kidman 212sqm

\$570,280 incl gst

Includes: plans, consent, kitchen, appliances, tinted double glazed windows, tiles, carpet, blinds, heatpump.



Wayne Pickerill
Managing Director

"Hi, I'm Wayne Pickerill, Managing Director and Project Manager for your new Fowler Home. Enjoy quality and all the benefits of dealing with an efficient, low overhead, nationwide company, where I will take a personal interest and be involved through to completion."



More designs at www.fowlerhomes.co.nz or visit our office at 63 Walton St, Whangarei. Phone Wayne Pickerill 438 4840

**FOWLER
HOMES**



Thinking concrete but don't know where to start?

Think Atlas Concrete

- We quarry the aggregate
- We manufacture the concrete
- We site visit to advise the best options
- We give you the choice of mix and colours
- We give a choice of local placers for you to choose
- We manufacture concrete to your requirements
- We stand by our product, you stand on it

Atlas Concrete
Your First Call for Concrete
Ph: 0800 888303 - Brynderwyn
or 432 5030 - Ruakaka



Shipping Containers

20ft Shipping Containers,
 Hire offsite \$180 per month + GST + Delivery
 Minimum 3 months,

SPECIAL

1st month free for a minimum 6 month hire
 20ft Containers @ Kepa Rd, \$280/m

Enquiries Ph 0212722739 / 021432701
 Email: storagebreambay@gmail.com
www.storagebreambay.co.nz

Good samaritans from the Ruakākā Beach Holiday Park help repair vandalised trail markers



Joe Southwood, a groundsman at the Ruakākā Beach Holiday Park helps put a marker post back after vandals pulled out posts and smashed signs on the tracks at the Ruakākā estuary

Over night on Sunday 11 and Monday 12 February some extensive vandalism occurred to the track signs and marker posts at the Ruakākā Wildlife Refuge. Posts were pulled out of the ground and signs were smashed.

Bream Bay Coastal Care volunteers built the track between the estuary and the surf beach with funding for materials from The Pacific Development and Conservation Trust, which was established in 1989 with money from the French government in recognition of events surrounding the destruction of the Greenpeace vessel, Rainbow Warrior on 10 July 1985.

The track steers walkers away from the shorebird nesting area on the estuary and keeps people from

walking over fragile dune vegetation.

Since a fire in 2020 the trust has carried out weed control and replanting in that area to ensure the natural vegetation cover has grown back.

Lu Cummings a committee member of the local coastal conservation trust said, "The whole summer has been really, really good. There had been no vandalism and people had followed the signs and kept out of the bird nesting area. But just now, more or less at the end of the holiday season someone decided to do this nasty thing."

She is unsure if the damage was done by local people or visitors and is grateful to the "good Samaritans" from the Ruakākā Beach Holiday Park, who helped with the repairs.

Bream Bay Garden Maintenance

Landscaping • Planting • Raised Beds
 Decks • Hedges trimmed • Trees pruned
 Weed control • Section Tidy Up
 • Simple Building jobs •

Free Quotes

NO JOB TOO SMALL

One Offs, Weekly, Fortnightly or Monthly

Phone Marcus 021 343 727



Police Report

Summoned to appear in court for driving whilst forbidden

A 43-year-old man from Auckland summoned to appear in court for driving whilst forbidden after being stopped on Marsden Point Road on 6 February.

Three-car collision in Maungaturoto

On 10 of February a three-vehicle collision occurred on Hurndall Street East in Maungaturoto. There were no serious injuries.

Six family harm incidents

Over the fortnight Saturday 3 February to Saturday 17 February Bream Bay Police attended six family harm incidents. Four of these were in Ruakākā, one was in Waipu and one was in Maungaturoto.

Three mental health crises call outs

Over the same period they were called out to three mental health crises events one each in Ruakākā, Waipu and Maungaturoto. In all three cases Police attendance was sufficient to calm the situation and the person involved has been referred to partner agencies.

North Island IRB Championships at Waipu Cove



With 75 crews from clubs around the North Island competing and flying their flags it was a colourful scene on at Waipu Cove on Sunday 11 February, the second day into Surf Lifesaving New Zealand's North Island Inflatable Rescue Boat Championships. This is the second consecutive year the event has been held here and Surf Lifesaving NZ will be looking for another beach to hold next year's competition in order to spread it around. Two Bream Bay crews to feature on the results boards were the Waipu Cove women's under 23 years team of Emily Stolwerk, Leayah Buxton, and Ava Pullan which came second in both the Mass and Assembly rescue competitions, and the Ruakākā Men's Masters team of Jason Toovey, Fletcher Pool and Shaun Green, second in the Single Rescue and Assembly Rescue events.



The Waikanae under 19 men's team of Hamish, Swann, Taron Wilson and Matahari Richards on its way to winning the under 19s Single Rescue final



Its not too late to enrol!

Semester One starts 19th February

Want more for your future?
Find out how studying with
us can help you!

0800 162 100 | northtec.ac.nz



For all your Household Needs, DIY and Gardening Supplies,
Fencing Equipment, Plumbing & Electrical Fittings.

End of summer deals happening now

OPEN 7 DAYS Monday - Friday 8:00am - 5:00pm
 Saturday 8:00am - 4:00pm | Sunday 9:00am - 3:00pm
 Public Holidays 9:00am - 3:00pm

Waipu Hammer Hardware | 35 the Centre, Waipu | 09 432 0292

BREAM BAY STORAGE

INSIDE/OUTSIDE storage at 50 Cove Rd., Waipu

Free phone. 0800 432 135
enquiry@breambaystorage.co.nz

www.breambaystorage.co.nz

RUAKAKA SAFE STORAGE

99 MARSDEN PT ROAD, RUAKAKA
92 Units from 6 x 3 to 1 x 1
Each unit individually alarmed and monitored
Electrified security fence

Ph. 0508 273 262 or 0275 310 788

CLEAN - DRY - SECURE

Ruakaka Stationery & Gifts

Ruakaka Town Centre
Shop local for all your needs:
Stationery, Books, Toys, Magazines
Greeting Cards, Clothing,
Gifts & Souvenirs

Phone 432 8104

New Zealand Post

Open Saturday until 7pm.

THE NEXT PUBLICATION DATE
of the Bream Bay News will be Thursday 7 March
The deadline for all copy is 4pm on
Friday 28 February

A healthy dune is money in the bank against the next storm

Continued from page 1.



Dunes at Uretiti in recovery mode one year after the big cyclone

17metres at Uretiti. While there was less erosion at Marsden Point/Mair Rd. the impact there was greater as the dunes were already very steep, weedy, less well-vegetated and very narrow in places.

North of Waipu Cove, at Uretiti and at Ruakaka south of the surf club where there is a wide band of native dune binding vegetation: spinifex and pingao, although the cyclone in February 2023 took out many metres of dune and cut out steep sand banks, the tops of those banks are now collapsing and bringing down with them tendrils of pingao and spinifex which have taken root and are spreading out to capture sand.

By contrast, at Mair Rd., where the back dune vegetation is predominantly kikuyu, this natural dune building process cannot occur.

Laura explained in her Coastal News report following the cyclone, "On most east coast beaches eroded sand is not lost to the system but rather forms a bar offshore. After storm erosion sand moves back onshore and rebuilds the beach. Over time dune plants trap the sand blowing back over the dune, gradually rebuilding it. This dune rebuilding process can take some time and is dependent on weather condition. Vegetation will not stop storm erosion but having a good cover of the right species is crucial to dune building, putting money in the bank before the next storm."



A steep sand cliff remains at Mair Rd where dune recovery is heavily compromised by weeds

WAIPU CAR & BIKE SHOW

A Huge Thank you to all our sponsors!

MAJOR SPONSOR

BBS
Timbers Ltd
SPECIALTY TIMBER & PLYWOOD

Stuart Abercrombie
All About Tyres
Battensby Brothers Contracting
Broadacre Farms
Camp Waipu Cove
Carleen Still - Inspire Real Estate
Cirfit Gym
Craigs Investments
Focus Civil Solutions
Hammer Hardware Waipu
Harcourts Waipu
Jaks Trucks
KiwiSpan
NSP
Point Timber
Progressive Vehicle Certification

Searle Electronics
Torchworks
Waipu Central Cafe
Waipu Citizens & Services Club
Waipu Country Cafe & Deli
Waipu Glamping 2022
Waipu ITM
Waipu Liquor Centre
Waipu Tyres & Automotive
Big Red Trucking
Bream Bay Cabling & Electrical
Cowpland Contracting
Feoh Espresso
Happy Tanks
Harker Herbs
Industry Waipu

Jamie Park Painting
Loan MacLean Cafe
Little Red Coffee
Lydia Sushi
Magic Tasty Takeaways
Marsden Metals
Marsden Print
Team McKegg Bayleys Bream Bay
McLeods Pizza Barn & Brewery
Plasterco
Ruakaka Motors
Waipu Bakery
Waipu Mens Shed
Waipu 4 Square
Waipu Pharmacy
Bleu Boutique

Smooth
105.6 FM
We Keep You Safe...

full noise
auto restorations ltd
panelbeating + restoration specialists
www.fullnoise.co.nz

THANK YOU!

Phone the
**BREAM
BAY
NEWS**
432 0209 or
0274 320070
or email:
breambaynews@
xtra.co.nz
if you know of
something
interesting
going on in
Bream Bay.

From Cape Reinga to the Bluff by bicycle while raising funds for The Cancer Society



Geoff Spencer with his bike packed and ready to join the Tour Aotea ride from Cape Reinga to the Bluff

Geoff Spencer is heading off again. Five and a half years ago he set out to walk the length of New Zealand on the Te Araroa Trail. His plans to walk the 3,000 kilometres in a single five month stretch were interrupted however when he was diagnosed several weeks in with lymphoma.

He carried on walking between tests, making it to Hamilton before he came back to Northland to undergo six rounds of chemotherapy followed by radiation treatment in Auckland when he made good use of the Cancer Society's Domain Lodge. He went back to where he left the trail the following spring and finally made it to The Bluff on 25 February 2022.

This time around he is making the journey by bicycle and set out with 95 other cyclists at 7am on Sunday 18 February. A further group of around another 90 cyclists set off the following day on Monday 19 February. The ride is expected to take 30 days.

Asked about why he feels compelled to make these arduous journeys, Geoff said, he has always enjoyed these kinds of adventures. As a young man he cycle toured around Europe. He has competed in the NZ Ironman competition and in numerous triathlons, half marathons, marathons and cycle rides. Now aged

70, he says all this exercise is a form of health and well-being insurance.

Also he enjoys travelling and meeting people but says "these days we all should be thinking about the amount of carbon emissions we cause," so travelling by bike fits his current thinking.

Out of gratitude to the Cancer Society and the availability of Domain Lodge for Northland's cancer patients Geoff is using his ride to raise funds for this charity.

If you would like to sponsor his effort please make a donation to: <https://www.youcanforcancer.org.nz/geoffspencerstouraotea>

You can follow his progress on the link:

<https://touraotea2024.maprogress.com?bib=G%20A%20S>

And he will be posting regularly throughout his ride on his Facebook page.

Reporting in at the end of this first day, a 110 km ride most of it on 90 Mile Beach, Geoff said the ride had been a hard one and he was exhausted. However he was looking forward to heading inland towards the Hokianga Harbour the next day and was hopeful this would be a bit easier.

**BREAM BAY
CURTAINS
AND BLINDS**
(INDOOR AND OUTDOOR)
AND SHUTTERS

PH 0204 632 432
FOR A FREE IN HOME
CONSULTATION
CALL SUE

www.breambaycurtainsandblinds.com
bbcurtainsandblinds@gmail.com

CALL SUE TODAY
0204 632 432

BIG RED

TRUCKING

Owner /Operator Duncan Mackay

GENERAL CARTAGE SERVICE

Metal / Topsoil / Sand / Manure / Hay / Silage

.....

WATER

Prompt Delivery And Reliable Service.

Healthboard Approved Drinking Water Carrier.

Call 021 070 8211

**ADVANCED
EARTHWORKS**

we create your future

**We Specialise in Civil and Siteworks in
the Whangarei-Ruakaka-Waipu-Kaipara Areas**

P: 021 198 8288 E: arne@advancedearthworks.co.nz

WHITTAKERS
funeral home

09 988 9049

whittakersfunerals.co.nz | admin@whittakersfunerals.co.nz
25 Kapa Road Ruakaka 0171 | PO Box 241 Ruakaka 0151



Have a go!

SPORTS FESTIVAL

BREAM BAY SPORTS TRUST

2024

11 FEB - 26 MAR



FEBRUARY

SUN	THU	THU	FRI	SAT
Waipu Boat and Fishing Club 11 Family friendly event 11:00am - 1:00pm Fishing at the club. Some children rods and bait supplied. 100 Nova Scotia Drive ☎ Linda 027 370 9991	Bream Bay Cricket Club 15 Skills stations with game of cricket after. Primary age (Y1 - Y6) from 4:30pm Bream Bay College field (behind gym). ☎ Dean 021 191 5769	Hold Down Brazilian Jiu Jitsu 15 Ages 4 - 7 3:30pm Ages 8 - 13 4:15pm Adults 13+ 5:30pm Fundamental movements & games. 3 Princes St, Ruakākā. ☎ Rebecca 027 7799654	Marsden Yacht and Boat Club 16/23 Adults and accompanied children 8+ years of age 5:00pm - 9:00 pm Marsden Cove Marina ☎ Helen 021 077 2332	Waipu Bowling Club 17 Coaching and a few games for beginners. Wear flat soled shoes. Ages 16+ from 10:00am 4A South Road, Waipu ☎ Bruce 021 068 2511

SAT	SAT	SAT / TUES	SUN	MON
One Tree Point Bowling Club 17 Coaching followed by a game of Bowls. All ages from 10+ years from 10:00am 35 Pyle Road West, One Tree Point ☎ Angela 027 4267 435	Bream Bay Boxing and Fitness 17 All welcome to give box-fit a go. Boxing incorporated into cardio exercises. from 10:30am 3 Princes St, Ruakākā. ☎ Terry 022 317 9865	OTP Pickle Ball 17/20 Introduction to Pickleball for adults. Bats & balls provided. from 8:30am Public Tennis Courts, Endeavour Place, OTP ☎ Doug 022 064 9294	Waipu Cove Surf Club 18 Ages 4 - 13 (nippers) Ages 14+ (lifeguard) from 10:00am Surf safety, swimming, beach games. 901 Cove Road, Waipu Cove ☎ Kath 021 554 401	Bream Bay Swimming Club 19 8-10 years & 11-13 years 4:00pm - 5:30pm Fun 'water open day' with skills and drills. Bring goggles. Bream Bay College Pool ☎ Fran 021 081 737 62

TUES	WED	SAT	SUN	THU
Cove Walking Crew 20 All welcome. One hour (or less) beach walk. 9:00am Meet in reserve opp. Cove Café, Waipu Cove ☎ Lynette 021 170 7550	Waipu Netball Club 21 Boys and girls. 5 years+ from 5:30pm Circuit-based fun netball activities. Waipu Celtic Barn ☎ Hollie 021 105 4633,	Waipu Croquet Club 24 Family friendly event 9:00am - 12:00pm Equipment supplied. Wear soft sole shoes. Caledonian Park, next to Bowling Club. ☎ Lyn 027 725 0205	Bream Bay Tramping Club 25 All ages and fitness levels able to hike for 3-4 hours in forest. from 8:30am Wilson's Dam, Sail Rock Road, Ruakākā. ☎ Richard 027 6427886	Waipu Pickle Ball 29 For any adults. Watch a game, then play! 5:30pm - 7:30pm Celtic Barn, Caledonian Park, Waipu ☎ Dawn 021 614 809

MARCH

FRI	MON	TUES	SAT	TUES
Marsden Yacht and Boat Club 1/8 Adults and accompanied children 8+ years of age 5:00pm - 9:00 pm Marsden Cove Marina ☎ Helen 021 077 2332	Bream Bay Tramping Club 4 see above for details EVERY WED in FEB/MARCH Marsden Ladies Badminton Drop in and have a go. All ages. from 9.30am Church Hall, Tamingi Street, Ruakākā ☎ Rhondda 021 167 2971	Cove Walking Crew 5 see above for details	Bream Bay Football Club 9 Fun 'football skills' alongside mini games. All ages 5 - adults. 10:00am - 12:00pm Ruakaka Sports Grounds, Takutai Place ☎ Andrea 021 120 3633	Ruakaka Indoor Bowls 19/26 Introduction to indoor bowls. All welcome. from 10:00am St Pauls Church Hall. corner Tamingi St and Karawai St, Ruakākā. ☎ Sue 021 850 286

Sponsored by



Supported by

One tree point Motel

Reyburn & Bryant

Daltons

Laser Electrical

Bream Bay News

Playing Princess in Japan



Jade celebrating her arrival at Disneyland in Tokyo

Playing a princess for a job is the dream of many young girls – a dream that has come true for one ex-Bream Bay College student.

Jade Taiaroa, who grew up in Waipu, has won a contract with Tokyo Disney Resorts to dance and perform the role, of not only one well-known fictional heroine but four!

She left for Japan in January and will be in training and rehearsal for her debut on the 1 April 2024 where she will dance in five of Tokyo Disney Resorts resident shows.

Landing the 15-month contract was pure hard work, said Jade. After completing a diploma in Dance and Performing arts at the Brent St. Studio in Australia, she practised and exercised conscientiously. She attended audition after audition, “sometimes making it to the final only to be then cut at the last minute”, she said. She persevered, looking on each audition as a job interview and helping her to figure out what the dance companies were looking for. At the same time she made sure she ‘stayed relevant’ to the industry by attending open classes and keeping fit.

Then, after endless ‘job interviews’ with a range of different organisations, Tokyo Disney picked her to play four heroines for their Tokyo Disney Resorts which includes DisneySea and Disneyland. Her contract runs for 15-months. The first three months will involve intensive training and rehearsals. Not only will she have to understand the stories and characters she will play, but she has to learn the history of the Disney organisation, and to sing in Japanese.

Jade is no stranger to determination and hard work. Even getting her diploma had its difficulties. Halfway through her studies Covid erupted, and Jade came home to Waipu until ‘things opened up’ again both here and in Australia.

She was quarantined for two weeks each way.

“I couldn’t lose my fitness so I had to practise my dancing in the hotel room – it was a real challenge. But the plus side was getting all the theory and my assignments done,” she said.

Jade’s advice to other young girls wanting to fulfill their dance dreams is to, ‘Keep dancing – don’t give up too soon. At 22 I am the youngest in the cast, but some professional dancers don’t get contracts until their late 20s’

Draft Council Long Term Plan due out next month

The Whangārei District Council’s draft Long Term Plan for 2024-2034 is expected to be available for public comment next month and the signs indicate we can expect a sizeable rates rise.

In September 2023 Mayor Vince Cocurullo sounded a warning, “We know our roads aren’t up to scratch, that we need to manage growth, be able to provide surrounding infrastructure for developments like the hospital upgrade and provide better access to parks and sports facilities. We also have core infrastructure to maintain and renew, and we want Whangārei to be resilient in the face of future weather events.”

He said, “This all needs to be adequately funded, and if we are spending more than we bring in, then it becomes unsustainable.”

He said Whangārei has some of the lowest rates in the country, which means his council is “feeling the pinch more than others”.

In last year’s annual plan Whangārei District Councillors voted to lower a proposed 10.9% rate rise to a 7.9% increase.

District Councils around New Zealand are grappling with high interest rates and inflation as well as growing infrastructure costs and many are proposing some hefty rates rises.

Hamilton City Council has consulted on a proposed 25.5% rates rise. In Wellington a rates rise between 15 and 20% is expected and the Christchurch Council is proposing a 13.3% rates rise.



**HAVENING
TECHNIQUES®**
CERTIFIED PRACTITIONER

Havening Techniques® are an evidence-based psychosensory healing method to help you overcome the consequences of traumatic and stressful events, including, phobias, fears, burnout, chronic pain, whilst building resilience and wellbeing.

As a nurse and midwife for over 44 years, I’m skilled at working with health and childbirth traumas/ fears.

Appointments are either in-person in Waipu or online.

Contact me for further information.

Professor Susan Crowther PhD
Tel: 022 310 1978
E: drsusan.crowther@gmail.com

Have a Go Sports Festival in full swing



Grayson Cherrington, aged seven, shows the fish his brother Kiarn caught to Waipu Boat and Fishing Club Secretary Linda Glibbery at the club's have a Go Family Friendly day held on Sunday 11 February

Restricted fire season: no fire without a permit

Most of Northland and the Auckland region as well as parts of the northern Waikato are now in a restricted fire season. This means no open-air fires can be legally lit unless a fire permit has been applied for and approved by Fire and Emergency.

Parts of the Far North and the Hauraki Gulf islands are under a stricter prohibited fire season, which means a total ban on all fires.

Fire and Emergency Regional Manager for Northland and Auckland Ron Devlin said the high westerly winds are already causing "spike days" to occur in Northland where the fire danger is hitting the highest level of "extreme".

"There is a major risk in our Te Tai Tokerau Northland District of a fire occurring that will be very difficult to control," he said.

It is forecast that in February to March, we will have forty per cent less rain than normal with a greater wind speed which means the fire danger will be above normal.

Mr. Devlin said, "As we have seen with recent fires, it takes a large number of our fire brigades, many of whom are volunteer, with supporting resources and aircraft to contain and control wildfires."

The most recent large wildfire in Northland was in March 2023 near Cape Reinga. It took eight days to extinguish at a cost of more than \$1.5 million. The fire near Waiharara in 2021/2022 burnt for 50 days at a cost of more than \$10 million.

"It's these sorts of fires which we are trying to avoid by implementing a restricted fire season now," Ron Devlin said.

He asks anyone considering lighting a fire to first visit www.checkitsalright.nz to establish the current fire season status to see if they can light a fire.

The restricted fire season remains until further notice.



Hold Down Brazilian Jiu Jitsu head coach Jonathan Woodhead gives some tips to Phoenix Riley and Ruden Hodson, both aged nine years, at the Bream Bay club's Have a Go session at its Princes Rd. base on Thursday afternoon 15 February.



Blaise Glass, aged nine, proved to be a hard hitting batsman when he came along to the Bream Bay Cricket Clubs introductory *Have a Go* lesson at Bream Bay College on Thursday afternoon 15 February.

Top of the Rock challenge

With the Brynderwyns closed it will be harder for Bream Bay people to get to this event on Sunday 17 March but if you like a fitness challenge the Top of the Rock event run provides options for walking or running 5km or 10km, and a free children's bike event.

The long run/walk route takes participants around two lakes, across farmland to the summit of the highest hill on Anderson's farm off Baldrock Road, which gives views over the surrounding countryside.

The annual event was named *Top of the Rock* due to the original route reaching the top of Baldrock mountain where access is no longer permitted. The new route provides more elevated, and further reaching views, particularly to the east

Free overnight camping at the venue will be provided, the swimming pool will be open and there will be music as well as food and drink stalls so non participants can also enjoy themselves.

Funds raised this year will go towards replacing the Kaiwaka gymnasium and fitness centre roofs and upgrading its security.

To enter visit the Kaiwaka Sports Association Website: www.kaiwakasport.co.nz

Bream Bay Cricket Club wins Northland Reserve Grade one day competition



The victorious Bream Bay Cricket Reserve Team

Bream Bay Cricket Club convincingly won the Northland Cricket Reserve Grade one day final with a convincing seven wicket win over Tikipunga at the Cobham Oval on Sunday 4 February.

This is the second year in a row Bream Bay has taken the Northland wide title, which is contested by teams from Wellsford to Kaitaia.

Bream Bay won the toss and sent Tikipunga in to

bat. Vaisakh Bijukumar and Anton Trist managed to bowl Tikipunga out for 61 in the 25th over. Tikipunga fought back bowling out Bream Bay's top three batters for 40. However Caleb Karl and Anton Trist took the run score up to 63 in the 15 over sealing the win.

The team is now focused on the 50/40 two day Declaration competition.

Waipu Tennis Club – Tournament Success

By Paul Ramsay

The summer months are time for tennis tournaments and some of our members have been out and about playing in these. Two Gold medals to Wendy Jambor at the NZ Masters in the 40-45 age group. In the combined doubles she was partnered by ex Waipu member Andrew Ramsay. Wendy also won the women's doubles. Peri Woods, Neil Baudinet and Gordon McKay also competed well in their various age groups.

Closer to home James Donaldson and Paul Jobin were runners up in the Men's B grade at the Janet Agnew Carnival Doubles Tournament. Ben Donaldson was 4th in the Men's A grade. On the Sunday Ben and Wendy Jambor won the combines. Bart Peters and Christine Den Hartogh competed in the mixed doubles. Wendy also won the Northland Women's doubles closed tournament

The Kaitaia Open tournament was held in early January and it was good to see Ben Donaldson and Wendy Jambor win the combines competition up there. Wendy and her partner (Dominique Zivkovich-Brady) were runners up in the women's doubles as well.

Our One Set Wonder doubles tournament had an

almost perfect day with little wind and hot, sunny conditions. Waipu past and present players dominated the Men's A grade with Andrew and Paul Ramsay winning and Peri Woods and Sam Bishop as runners up. Men's B competition was won by Leon Rossbotham and Carl Maria from the doubtless Bay area with Henry Morunga (Kaitaia) and Yann Gublin (Waipu) runners up. Women's A doubles was won by Judy Hill (Whangarei) and Yvie Butterworth (Doubtless Bay). Runners up were Waipu members Melissa Wong and Pauline Fudge. Maria Konigs and Cathy Disbury from Bream Tail won the Women's B competition with Waipu members Leanne Govorko and Karen Wright as runners up.

Interclub is just starting up again and with most matches accounted for Waipu position and Waipu Silver 6th. In the B grade Waipu Bronze are 4th

Welcome along to all the new people joining us on Tuesday nights. There is always room for more. Remember to check our Facebook page for what is going on at the club.



Volunteers needed for our Waipu shop
Throughout the week and on weekends

Donated goods welcome
Phone 432 1342 for pickups.

MARSDEN POINT HIGH TIDES

	AM		PM	
Thu 22 Feb	7.09	2.4	7.26	2.3
Fri 23 Feb	7.58	2.5	8.15	2.4
Sat 24 Feb	8.14	2.5	8.58	2.4
Sun 25 Feb	9.20	2.5	9.38	2.5
Mon 26 Feb	9.56	2.6	10.15	2.5
Tue 27 Feb	10.30	2.6	10.50	2.5
Wed 28 Feb	11.04	2.6	11.26	2.5
Thu 29 Feb	11.39	2.5	~	~
Fri 1 March	12.03	2.5	12.16	2.5
Sat 2 March	12.43	2.4	12.55	2.4
Sun 3 March	1.26	2.4	1.38	2.4
Mon 4 March	2.15	2.3	2.27	2.4
Tue 5 March	3.11	2.3	3.23	2.3
Wed 6 March	4.15	2.3	4.26	2.3
Thu 7 March	5.21	2.4	5.34	2.4
Fri 8 March	6.23	2.5	6.40	2.5

Weeding Wednesdays

**Help Bream Bay Coastal Care
Keep Ruakaka Wildlife
Refuge free of invasive weeds**

Meet at 8.30am each Wednesday
at the Bream Bay Drive entrance
(on left past
Oasis store and before the motel)

Weeding for just two hours



EVERY THURSDAY

BREAM BAY
Link

MORNING

9.00am	Departs	Kaiwaka Kaiwaka Hall
9.15am	Departs	Mangawhai Village Village Shops Bus Stop (by restrooms)
9.20am	Departs	Mangawhai Heads I-Site
9.35am	Departs	Langs Beach Corner of Wairahi and Cove Roads
9.40am	Departs	Waipu Cove Beach Car park
9.50am	Departs	Waipu Monument Bus stop
10.10am	Departs	Rukākā Peter Snell Road (opposite Takutai Place)
10.50am	Arrives	Whangārei Rose Street Bus Terminus

*For travel within Whangārei see CityLink Whangārei timetable
www.citylinkwhangarei.co.nz
or get your timetable from the Rose Street office.

AFTERNOON

3.00pm	Departs	Whangārei Rose Street Bus Terminus
3.40pm	Departs	Rukākā Peter Snell Road (opposite Takutai Place)
4.00pm	Departs	Waipu Monument Bus stop
4.10pm	Departs	Waipu Cove Beach Car park
4.15pm	Departs	Langs Beach Corner of Wairahi and Cove Roads
4.30pm	Departs	Mangawhai Heads I-Site
4.35pm	Departs	Mangawhai Village Village Shops Bus Stop (by restrooms)
4.50pm	Arrives	Kaiwaka Kaiwaka Hall



OPERATED BY
LEABOURN
Ph: 0800 994 404
E: office@leabourn.co.nz

FARES

	One Way	Return
Kaiwaka	\$7.00	\$10.00
Mangawhai	\$7.00	\$10.00
Mangawhai Heads	\$7.00	\$10.00
Langs Beach	\$7.00	\$10.00
Waipu Cove	\$6.00	\$8.00
Waipu	\$6.00	\$8.00
Rukākā	\$5.00	\$7.00

ROUTE DESCRIPTION

Kaiwaka/Mangawhai Road,
Molesworth Road,
Mangawhai Heads Road, Cove Road,
The Centre Waipu, Nova Scotia Drive,
SH1, Marsden Point Road,
Peter Snell Road, Marsden Point Road,
SH15A, SH1, Otaika Road,
Maunu Road, Walton Street,
Rose Street Bus Terminal.

If you would like to be picked up
elsewhere along the route,
please phone Leabourn's
to arrange this on the
Wednesday before
you want to travel.

CONTRACTED TO:
**Northland
REGIONAL COUNCIL**

For service updates visit:
www.buslink.co.nz
Feedback to buslink@nrc.govt.nz

Training sessions for women who interested in joining the Women's Menzshed

Following on from the success of the Women's Group, which was set up in the Waipu Menzshed last year a series of introductory training sessions is being offered to women who would like to join the woodwork group.

Introductory sessions will be held on Wednesday mornings (9–11am) on 21 February, 28 February, 6 March, 13 March

The sessions will explain the workshop safety rules and the safe way to use the tools and machinery at the Menzshed. Attending all of these four sessions is a requirement before joining the regular women's group, which runs on Friday mornings at 9–11.30am

The goals of the group are to:

- Teach women about building tools, how they are used and what they can achieve;
- Create a community of women connected to each other with a sense of purpose;
- Provide an opportunity for women to give their time and energy to a beneficial community project.

The Friday team makes items for the community, such as predator boxes, trellises, garden obelisks. (Please note that there is no opportunity for personal projects during this time.)

The trainee group is limited to a maximum of eight and open to women over the age of 16 years.

Co-ordinator Rica Dearman said, "Being fit and fairly strong is helpful in using all the different pieces of machinery. If you are interested, please email me at ricadearman@gmail.com

Funds sought to build a new Waipu Menzshed base

The Waipu Menzshed now has a formal lease arrangement with the Whangārei District Council for a building site on the grass car park land between Saorsa Retirement Village and The Braigh and is applying for grants to build a shed on the site to relocate their club to.

The Menzshed was given until May this year to move out of the old Masonic Lodge building, part of the Waipu Museum's Heritage precinct. The group has over 50 members and meets each Tuesday to make wooden boxes for predator control traps, build and repair furniture for local charitable organisations, make garden trellis out of off cuts to name some of their activities. The Menzshed organization is also concerned with supporting men's health.

Menzshed Chairman Gordon Walker said now the lease has been signed the club can actively apply for grants. However, he thinks it very unlikely they will have the new building up and running by May. He is hopeful that the Museum Committee, when it sees the progress under way, will extend the time frame before they need to vacate the lodge building.

The Menzshed estimate of the amount of funding needed is \$150,000, although this could change depending on regulations they need to comply with for a public building.

The Whangārei District Council has plans to upgrade the car park, which Gordon is hoping will happen sooner rather than later to save the Menzshed the expense of building a driveway.

With You every step of the way

CENTURY 21

Jean Johnson
Realty

Sales and Property Management
Dargaville, Whangarei, Bream Bay
W.dargaville@century21.co.nz P 09 439 7575

THE MAINTENANCE

www.themaintenance.co.nz

- ❖ Chemical and non-chemical house washing
- ❖ Window and house cleaning
- ❖ Painting and staining – exterior house, decking and fences
- ❖ Water blasting - decks, driveways and courtyards
- ❖ Clean guttering and downpipes
- ❖ Pest control and spider spraying
- ❖ Tree trimming with extension saw

Phone now for a FREE QUOTE

REVITALISE ❖ PRESERVE ❖ PROLONG ❖ MAINTAIN

TONY 021 196 2949 OR MELISA 021 075 6770

As seen on Grand Designs 2019

0274 320 007

REGISTERED MASTER BUILDER QUALIFIED TRADESMAN CARPENTERS MARCUS@CCP.NZ WWW.CCP.CO.NZ

Bring your bikes to the Marsden Cove Market

Bike Northland is holding an event focused on bicycles and bicycle riding at Marsden Cove on Sunday 25 February from 9.30am to 2pm, alongside the Marsden Cove Market.

People are invited to "Pedal to the Market" where they will find help with basic bike maintenance, activities to improve their cycling skills and guidance on how to set up their bikes for a more comfortable ride. .

Neweya Transport is supplying a big log truck and the Share the Road team will be running Blindzone workshops giving people an opportunity to see the road from a truck driver's perspective.

A valet service will be offered so cyclists can attend the workshops or look around the market knowing their bicycles are being looked after.

Awen Page, Operations Manager for Bike Northland, said "We have a wealth of knowledge about fixing bikes, checking your set up or just sharing ideas about where to ride. No question is too foolish.

"And If you haven't brought your bike, you are still welcome to participate or come over for a chat."

Members of the Shared Path group will be there gathering support for their proposal for a safe shared path for cyclists and walkers between Marsden Cove and the Ruakākā Towncentre.

Regular reeling in Waipu

Regular monthly reeling in the Waipu Coronation Hall has begun and will take place on every second Friday night of the month from 7.30pm to 9.30pm.

Wes Bycroft of Celtic Band Twisty Twisty Willow said prior to COVID this was a regular monthly occurrence in the Piping Hall in Whangārei to target the teenage to 40 year olds. Wes said,

Wes said, "It built up quite well until COVID put a stop".

The monthly gathering has now shifted to Waipu 's Coronation Hall, which has air-conditioning and a sprung floor.

Wes "The hope was the group built up in Whangārei would transfer and this seems to have happened. On February 9th night over 35 reelers turned up, which has encouraged the organisers to keep it running.

WHAT'S ON IN BREAM BAY

- **BREAM BAY SPORTS TRUST GIVE IT A GO FESTIVAL** From Saturday 10 February to Sunday 10 March See calendar page 10 .
- **MARSDEN COVE MARKET** Next on Sunday 25 February 9.30 -2pm at the Marsden Cove Marina
- **PEDAL TO THE MARKET** Sunday 25 February at the Marsden Cove Marina. 9.30am - 2pm Bike Northland invites people to bring their bikes to the marina for advice on basic bike maintenance, cycling skills and a chance to climb on board a log truck and see the road from a truck driver's perspective.
- **REELING DANCING IN WAIPU CORONATION HALL** Every second Friday of the month, 7.30 to 9.30pm. \$5.00, under 12-year-olds free. All ages and families welcome. Lively dancing to Scottish jigs and reels. Easy to pick up. Bring water bottle, something cold and small to share for supper. Air conditioned hall. Next night: Friday 8 March.
- **WAIPU BOUTIQUE SUNDAY MARKET** Next on Sunday 10 March From 9am to 1pm in the Coronation Hall
- **ONE TREE POINT ARTISAN MARKET** Next on Sunday 17 March. 9am - 1pm. One Tree Point School quadrant and field. Fundraising for Whangārei Hospital Children's Ward.
- **WAIPU MUSEUM** 36, The Centre, Waipu. Open seven days 10am-4pm .
- **THE KAURI MUSEUM.** . The Kauri Museum is open 9am-5pm every day except Christmas Day. 5 Church St., Matakōhe. See more at www.kaurimuseum.com

Phone the BREAM BAY NEWS 027 432 0070
or email: breambaynews@xtra.co.nz
if you know of something interesting going on
in Bream Bay.

TRADES & SERVICE DIRECTORY Ph 09 432 0209

LAWSON
CARTAGE
FOR ALL YOUR
EARTHWORKS & CARTAGE NEEDS
*Suppliers of: topsoil, compost, woodchip,
bark, sand, pebble, rocks and firewood.*
Ph/Fax 09 432 8418 or 021 768 940
458 Marsden Point Rd. PO Box 142, Ruakaka 0151
email: lawsoncartage@xtra.co.nz

**BREAM BAY
ACCOMMODATION**
RUAKAKA
STUDIO - HOLIDAY HOMES - B&B
BOOK ONLINE OR PHONE
Ph: 09 432 7025 Mob: 021 2722 739
website for online bookings: www.breambayaccommodation.com

WORTHY AG

SMALL BLOCK MULCHING
Phone COLIN (Joe) 0274916983

**Bream
Bay
Tax**
Tax
Accounting
Business support
Free first consult.
Fixed price packages
Supporting Bream Bay businesses
Robb MacKinlay 027 540 7859
robb@breambaytax.nz www.breambaytax.nz

**BARFOOT
THOMPSON**
I Love Selling Bream Bay!

Angelique Hartnett
Coastal & Lifestyle Sales / AREINZ
0274 356 411 / 09 435 5914 P
a.hartnett@barfoot.co.nz E

GREG STEWART
Qualified Builder...License # 106626

Over 45 years experience
Prompt Service
Ph 021 317 555
Email gpstewart56@gmail.com
SMALL ALTERATIONS..
DECKING..FENCING
BUILDING REPAIRS..HANDYMAN
NO JOB TOO SMALL GIVE ME A CALL

Deadline for next issue - Wednesday 28 February

TRADES & SERVICE DIRECTORY

Ph 09 432 0209

NORM FAGO
OWNER / OPERATOR

Act Now
Car Rentals

M: 0274 362 480
Nz Freephone: 0800 362 480
E: info@actnowrentals.co.nz

From \$45 per day - Min 4 days
Based in Ruakākā

Ph: 09 432 0123

BREAM BAY GLASS

FOR ALL YOUR GLASS NEEDS



Mob: 0274954548

AMC
AUTO MOBILE GLASS

FAST WINDSCREEN REPLACEMENTS & CHIP REPAIRS

- Mobile service or come to our workshop
- Ultra competitive pricing. • Insurance claims welcome.
- Windscreen replacement in under an hour.

Phone Conrad on 022 036 2916
2/17 Gumdigger place.

BRADLEY
EARTHWORKS

- POND CLEANING • DRIVEWAYS • RACEWAYS
- LAND CLEARING • TREE REMOVAL • ROADING AND MORE!

CALL ME TODAY FOR ALL YOUR EARTH & TREE WORKS
PHONE ROY 027 374 5090 WAIPU

ABSOLUTE CONCRETE

www.absoluteconcrete.co.nz
CULVERT PIPES
Spun and reinforced
Crane truck delivery
Drainage Merchant - Hardware Store
Email: sales@absoluteconcrete.co.nz
Phone (09) 431 2211
KAIWAKA

MACSWAY
SCAFFOLDING LTD

WE BUILD, HIRE, ALLOY MOBILES, TEMPORARY FENCING, & SHRINKWRAP

Ph: 09 432 7643 • 0274 726 772
macsway@xtra.co.nz Kapa Road, Ruakaka

O'MALLEY CONTRACTING LTD | CONCRETE SPECIALISTS

- FOUNDATIONS
- HOUSE SLABS | STAIRS
- RETAINING WALLS
- DRIVEWAYS | CARPARKS
- EXPOSED AGGREGATE
- COLOURED CONCRETE
- COMMERCIAL | RESIDENTIAL
- LICENCED BUILDING PRACTITIONER

Free No Obligation Quote

FAMILY OWNED & OPERATED

021 2200 198 | OMALLEYCONTRACTING.COM

Bream Bay Concrete Ltd.

Free Quotes • Reliable Service • Quality workmanship

- Concrete pads
- Shed floors
- Pathways
- Home floors
- Driveways
- Concrete cutting
- Excavation works
- Retaining walls
- Paving fences
- Profiles for homes & sheds
- Subfloors & boxing

Mark Royals Ph: 432 0107 Mob: 0274 433 130

BREAM BAY ELECTRICAL

Wiring Safe Homes And Businesses Throughout Northland

RESIDENTIAL COMMERCIAL INDUSTRIAL

0800 223 555 • 027 35 33 555
www.breambayelectrical.co.nz

24H SERVICE



BAYSIDE CONTRACTORS

RESIDENTIAL EARTHWORKS • HOUSE SITES
DRIVEWAYS • TRENCHING & DRILLING

Contact Shane
027 3019 480
admin@baysidecontractors.co.nz

TC ENGINEERING
Metalwork Specialists

Stainless and Aluminium Welding and Bespoke Fabrication

Gates and outdoor furniture. Marine repairs and fabrication.
Onsite welding for farm repairs and modifications.
www.tcengineering.nz 021 145 7075 or 021 203 0309

Tractor Mulching

100hp tractor with high bodied yllails, mulcher, park finishing mowers, slashing
Gorse & blackberry spraying

Also mechanical tractor repairs

Phone Bain McGregor
0274 979 013
or 09 432 0527



Grant McLean
Stock Agent for Bream Bay

Ph 021 7758 48
Email: skincarla@xtra.co.nz

All aspects of stock sales including:
• dairy beef • bobby calves • store cattle • live export heifers
• sheep • pigs • supplying stock for slaughter

Also caters for small block holders.

Carrfields Livestock

Ruakaka Motors

Mechanical and Auto Electrical Repairs and Servicing

Monday - Friday 7.30am - 5pm
Tyres and Batteries
WOF testing Gold Card discount
Drop off, pick up service available in Waipu
Phone 432 7233

PARADISE QUARRY

PARADISE QUARRY STONEMASONS

Specialists in stunning stone for landscape
Suppliers & installers of northland's own schist for all your stonemasonry & landscaping Requirements

(09) 432 2722 or GEOFF (021) 972 139
www.paradisequarry.com

SUSAN JACOBS PAINTING
INTERIOR • EXTERIOR
027 370 5339

BLIND PRO

Blinds • Awnings • Shutters

Indoor blinds and outdoor screens

Call us today for a free, no obligation consultation and quote

ph 09 423 9661
website www.blindpro.co.nz
email info@blindpro.co.nz

McQUINN PUMPS

How's Business? ... It's Pumping!

24/7 SALES, SERVICE & INSTALLATION | PUMPS & WATER TREATMENT
PHONE SUPPORT AVAILABLE

0800 627 846
PHONE FREE

NOW AT 72 KIOREROA ROAD
—ALONG FROM RD1 & ITM

Deadline for next issue - Wednesday 28 February

TRADES & SERVICE DIRECTORY Ph 09 432 0209



DRAINAGE:

* Septic Systems * Water Tanks * Truck & Digger Hire *
* Subdivisions * Domestic * Commercial *
Certifying Drainlayers

Licensed Contractor for
Waste & Drainage Work



EARTHWORKS:

* Subdivisions *
* Farm Work: Effluent Pond Design & Build, Dams, Races *
* House Sites * Driveway Prep * Lawns * Roding *

P. 09 432-7877 M. 027-432-7877
E. karl@hansende.co.nz

Team James Alexander

JAMES ALEXANDER
021 878 178
SALESPERSON & AUCTIONEER

ASHLEIGH LOUISE
027 733 5703
SALES ASSOCIATE

Licensed Salesperson: The Real Estate Shop Limited Licensed (REAA 2008)

Diggermate
OPERATING AND HIRE

CALL GEORGE
027 214 5501

GREEN TEAM
A FORCE OF NATURE

Small Building Jobs & Repairs

- Letterboxes • Curtains • Smoke alarms,
- Clothesline • Decks • Fences,
- Kitchen and bathroom repairs
- Rental property maintenance

Call Tony on 021 196 2949

RHYTHM CONCRETE
big or small, we do it all

Residential and Commercial concrete needs

Casey
Concrete Contractor
0212563489
Casey.rhythm.concrete@gmail.com

Long Run Roofing & Cladding
Re-roofing & Spouting
Edge Protection

Terry Mounsey
021 562 269
wetaroofting@xtra.co.nz

RELIABLE & PROFESSIONAL SERVICE

STORAGE BREAM BAY
76 Waiwarawara Dr, Ruakaka 0171

Karen Loft
Business Manager
Mob: 021 432 701

Office Hours 9.00 - 1.00
email: storagebreambay@gmail.com
www.storagebreambay.co.nz

LOW COST DRIVEWAYS & SURFACING NEEDS

Concrete or asphalt beyond your budget ...

We have the next best solution for a fraction of the price.

Call for a quote, you'll be pleased you did!
Paradise Quarry Contractors

Geoff (021) 972 139 or (09) 432 2722

For contractors who 'think' ...

Hydroseeding
Spray On
Lush Lawns

For a free consultaion & quote, call or email
George 021 688 949
Info@gogreenteam.co.nz

MPP MARDEN PANEL & PAINT

Panelbeating and Spraypainting
Caravan and Motorhome Repairs
Tyres New and Secondhand
Punctures

470 Marsden Point Rd, Ruakaka
Call 09 4330313 24 Hrs or Bert 021 983 724

M.V.B. Electrical Ltd.

Working in Bream Bay since 1977

Repairs • Installations • Advice

Mike van Blommestein

Phone: 09 432 1015 • Mobile: 0274 783 749
Email: mikevanb@xtra.co.nz

BLINDS SHUTTERS & CURTAINS
Bream Bay Whangarei & Districts

Rollers, Venetians, Verticals
Shutters, Curtains & Outdoor Blinds

Ask about our DISCOUNT for houseslots
Free in-home measure & quote
Free Installation

Phone Gail 0211 95 35 35

www.blindsandshutters.co.nz

GRAEME BINT FENCING

GOOD RATES, NO JOB TOO SMALL
09 432-1599 or
027-292-2833
grbint@xtra.co.nz

MANGAWHAI SMALL ENGINES

Grasshopper, Husqvarna and Honda dealer



194 Molesworth Drive, Mangawhai
Ph: 09 431 5270 or Mb: 021 655 481
Email: msengines@xtra.co.nz

BREAM BAY HYDRAULICS

Bream Bay's first local
hydraulic hose service



021 308 358 breambayengineering@gmail.com

BREAM BAY NEWS PHONE 09 432 0209

Email: breambaynews@xtra.co.nz

Post copy to : Bream Bay News, RD 2, Waipu
Email: breambaynews@xtra.co.nz
or leave it at the Waipu or Ruakaka Post and Lotto Shops

FOR SALE**WATER TANKS**

09 431 2211

sales@absolute
concrete.co.nz

RAWLEIGH'S PRODUCTS Independent dealer. Ointments back in stock. Phone Susan McRae 027 227 2291.

WORMS FOR SALE

For worm farms
Phone 432 0209
or text 027 432 0070

Scooters Plywood
3mtr Scaffold Planks \$77
12mm H3.2 NS
Plywood \$79.00
Ph 438 6565

WILTSHIRE SHEEP
Ideal lifestyle block sheep
Self Shedding
Ph 027 432 1016

SUMMER FIREWOOD SPECIAL:

Pine 85 per m3, Gum 125 per m3.
Delivery available Ph 027 55 88 151

SAORSA UNIT FOR SALE

TWO BEDROOM brick and tile unit Waipu. Discussion about Saorsa ORA fees welcome. plus baseline for both parties. 0220790721

VEHICLE FOR SALE

VINTAGE CAR FOR SALE. Austin A30 1954, hold rego "BABYEE" plate, no rust at all, straight body, 2nd owner. recommend view it at Ruakaka, asked \$10,000. email me rmarquet@xtra.co.nz.

FOR HIRE**SHIPPING CONTAINERS**

20ft Shipping Containers, hire offsite \$180 per month + GST + Del, minimum 3 months,
Ph 0212722739 / 021432701

WANTED

OLD NEWSPAPER Copies of the Bream Bay News, Advocate, Herald, Leader, Weekend Lifestyler, or Mangawhai Focus for recycling as erosion control. Waipu Lions fundraiser. Phone Dave Bell 09 432 0861.

VEHICLES WANTED. Top cash paid For any VANS, UTES, TRUCKS, 4X4, Dead or Alive, damaged, de-registered Mechanical problem, no WOF we buy it. Call 0800 333 398

PERSONAL

SINGLE MALE PENSIONER 69 would love to visit another single male pensioner, friendship and more, regular visits. Ph/txt 0284690113

SERVICES OFFERED**NORTHLAND HEADSTONES**

Located in One Tree Point
Your Local Headstone Showroom
Call 0800 707 800
www.northlandheadstones.co.nz



Tree Removal
✓ Pruning
✓ Chipping
✓ Stump grinding
Qualified & Insured
Ph Scott (0800) 468-9663
Arborcare
Tree Maintenance



GLENMOOR
WATER TANK CLEANING
No need to empty your tank
• Vacuum or full scrub
Phone Mark Draper
0274 707 607

Waipu Boarding Cattery

Excellent care and accommodation
Ph Sue 432 0394

JD LAWN CARE SERVICES PH. 021 063 7907

Lawn mowing, Weed spraying, Water blasting, surface cleaning of driveways, paths and patios, Hedge trimming, Section clearing, tree pruning, wood chipping and more.

SOCIAL SERVICES

LINKING HANDS
Health Shuttle
Phone (09) 431 8969

BREAM BAY ANGLICAN FOODBANK

If you would like assistance
or know someone that does,
perhaps we can help
Please phone Janet 433 0045

**Not sure? Ask us!**

We provide free, confidential and independent information and advice to help you understand your rights and responsibilities.

Contact us for assistance.
09 438 8046 • whangarei@cab.org.nz

www.cab.org.nz

SOCIAL SERVICES**Safeman Safe family Men's Centre**

Safeman Safefamily offers a safe place for men to talk privately without judgement and with complete confidentiality. We are peer led and professionally supported and offer a range of services and support for men and their families.

The services we provide are as follows:

- Advocacy Navigator
- Court support
- FGC Support
- Probation Community Service Provider
- Legal Advice
- Marriage Celebrant
- House and property blessing
- One to one counselling
- Drug and Alcohol support
- Anger management group sessions
- Supervisor for court ordered access
- Work brokers/ help with employment opportunities.

No appointments are necessary, we have an open door policeu - if you need help or know someone that does just come on down to: **9 Takutai Place, Ruakākā.** We are right next door to Jimmy's Barber Shop or I can be reached by phone 021 121 0763 - Phil Paieka

Bream Bay Community Support Trust

Takutai Place, Ruakaka Phone: 09 432 7197

Services we provide:

- Registered Social Workers
- Family Support Workers
- Youth Workers
- Youth Hangout Space (watch this space...)
- Community Connectors (Connecting community to various services)
- Free Whanau Ora Medical Clinic with Ki A Ora Ngatiwai. Wednesday mornings 10am-12noon, by appointment only phone 09 435 4586
- Free Budgeting Service – Tuesdays 10am-12pm by appointment
- Mana Wahine Ki Wahine Toa, women's group
- Ha Tane – men's group
- Listening Ear – need to talk? Mon-Fri 9am-4pm no appointments necessary, cuppa and a listening ear available

Waitata Sessions 12:30pm every Wednesday, in our hall, come along for a sing along. . Last Session for 2023 Wednesday 20th December

Community Connections 10:30am-12pm every Friday in our hall. Hot soup and cuppa available. The purpose of these sessions is for the community to get together and partake in different activities together, getting to know one another, sharing talents/hobbies/passions creating connections in the community, building friendships. The session topics are driven by interests of participants.

- Friday 23rd Feb – Indoor Bowls
- Friday 1st March – Waitata Session
- Friday 8th Mar – Sea Week Activity
- Friday 15th March – Learner Ukulele

Follow us on social media - Facebook and Instagram for updates on what is happening here during the week.

www.bbtrust.org.nz

SITUATIONS VACANT

WANTED - A PERSON TO LOOK AFTER AND MAINTAIN A COLLECTION OF CLASSIC VEHICLES Old school mechanical knowledge needed. Flexible working hours. Full or part time. Please contact Dave 021 947 710.

PUBLIC NOTICES



Takahiwi Rugby League

Applications are now being received for coaches for the following grades in 2024: Under 6s, 8s, 10s, 18s. The coach's position for the Senior Men's Premier Grade is also available.

Come join this club and share your skills and experience with our Rugby League community.

Applications can be sent to: Hoolies68@xtra.co.nz.

PUBLIC NOTICES



Bream Bay Medical Centre Ltd.

Ruakākā Town Centre, Ruakākā

Monday - Friday: 8.45 am - 5pm

Saturdays: 9am - 12pm

**Marsden Cove Medical Centre
1A Ngawaka Lane, One Tree Point**

Monday - Friday: 8.45am - 5pm

Please advise at time of booking
if you require an extended consultation

Ph: 432 8060

New patients welcome



FIND TECHNOLOGY FRUSTRATING?

Don't let technology hold you back!!
SeniorNet Bream Bay can help you with
Apple, Android and Microsoft. Desktops,
Laptops, Phones, Tablets & Cameras.
We are volunteers, tutors are available to
guide your learning in easy steps.
Bookings essential, please contact:
Learning Centre: 09 432 7692
(leave a message)
Or email - seniornetbb@gmail.com
Course venue: Learning Centre,
7 Kapa Road, Ruakaka

Waipu Senior Netball Club Inc AGM

28th February, 6pm
Logan Maclean Cafe, Waipu
ALL WELCOME

**Local people read
THE BREAM BAY NEWS
It is an effective place to advertise**

LIBRARY HOURS

BREAM BAY SUNDAY CHURCH SERVICES

Presbyterian Camellia Ave, Ruakaka:
8.45am. The Centre, Waipu: 10.15am.
Prayer Service: 7pm

Encounter 223 Marsden Pt. Rd,
Ruakaka, 10am.

Anglican - All services at ST PAUL's
Church, 25 Karawai St, Ruakaka 9.30am
until further notice.

Catholic Holy Family Church,
Ruakaka, 10.30am. Mass or Liturgy of
the Word

Lifepoint. 300 OTP Rd, 10.30am.



Justices of the Peace

Ruakākā

Paea Paki 09 432 8262/021 149 1625
Darrell Trigg 09 432 7256/021 332 901
Ken Orr 09 432 8215
Wayne Buckland 022 644 5376.

One Tree Point

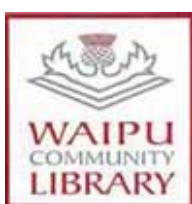
Jules Flight 0274 777 210
Sir John Goulter 021 612 442
MM Jolley 027 415 9486
Ian Bogue 0274 300 418
Grant Brown 027 248 7126

Waipu

Trevor Vaile 021335 075
Doug Scott 027 229 9752
Ken Couper 027 292 0524
Angela Stolwerk 021 823 966
Chris Martin 027 367 2947

Make contact with a Justice of the Peace
(on any day) and make an appointment to have
your documents completed.

A service desk also operates 10am to 11am on
Saturdays in the Ruakākā Library.



Monday, Wednesday,
Thursday, Friday &
Saturday 10am - 1pm.
Tuesday 10am - 4pm.
Phone 432 0375



RUAKAKA COMMUNITY LIBRARY
Takutai Place, Ruakaka
432 8408
Mon - Fri 9:30am-3:30pm
Sat 9am-1pm
JP Service available
Saturdays 10am - 11am.

CLASSIFIED ADVERTISING

Costs \$5.50 for up to 20 words and 20c
for each additional word.

Boxed, classified adverts cost \$16.50 gst .inc.

Phone your advert through to 432 -0209

email it to breambaynews@xtra.co.nz

Post to: Bream Bay News, RD 2 Waipu 0582

or leave it with payment at The Waipu Post Shop or
the Ruakākā Gift and Lotto Shop

MARKETS



THE NEXT PUBLICATION DATE

of the Bream Bay News will be Thursday 7 March
The deadline for all copy is 4pm on
Wednesday 28 February



Harcourts Waipu



Price Reduction – Walk to Town WAI2562
\$695,000

- 3-bedroom, 1-bathroom solid, brick home
- 556m² section – flat and established
- Situated minutes from Waipu Primary School
- 5-minute walk to the local shops
- Separate bath and open wet room shower
- Lounge and dining area flows out to patio
- Off Street parking for family and friends
- Double garage provides ample storage

Judy Guy 027 221 5623



North Facing Elevated Block WAI2643
\$575,000

- 6630m² lifestyle block
- Gentle sloping land
- Beautiful rural and bush outlook
- 7 minute drive to Waipu Village
- 12 minute drive to Uretiti Beach
- 3 minute drive to Piroa Falls
- Power at the boundary
- Blank canvas for your dream home

Roger King 0277 555 001



Countryside Peace with Panoramic Seaviews WAI2638
\$1,269,000

- Modern 5-bedroom, 1.5-bathroom home
- Stunning views of countryside and the coast
- One hectare of land for the kids to explore
- Open concept layout provides ample space
- Outdoor entertaining area for family gatherings
- Set amongst private and peaceful gardens
- Double garage, workshop and carport
- 8.5 kms from Waipu village

Christine Tierney 027 488 1883

Harcourts Waipu | 7 The Centre, Waipu | 09 432 4000
Harcourts Waipu Ltd. is a member of the REAA 2008

Harcourts Waipu

Sun 25 February | 9:30am-2:00pm | Marsden Cove Marina Market

PEDAL TO THE MARKET

FREE

Join us at Marsden Cove Marina for a day of bike-minded fun and learning!

1. Blind zone workshop - an opportunity to see the road from a truck drivers' point of view. Learn how to ride more confidently when sharing the road with a heavy vehicle.
2. Skills session/activities to improve your cycle skills and help you become a better, safer rider.
3. Basic bike maintenance - bring your bike down to our tent and we can give you a hand to fix it, or offer advice.
4. Cycling guidance or advice - learn how to best set up your position on the bike, where to ride around NZ and what resources are out there to help you enjoy cycling.
5. We'll be running a free bike valet, so if you pedal to the markets you can leave your bike with us while you shop!



Share the road
Heavy vehicle drivers and cyclists

Newey
Newey's

Bike Garhoud

BREACH BAY
Marsden Cove Marina



BREAM BAY REALTY LIMITED (LICENSED: REAA 2008)

Shop 11 | Town Centre | Ruakaka 0116 | NZ
PH: 09 433-0300 | bbrealty.co.nz
info@bbrealty.co.nz

Proud sponsors
SPCA
WHANGAREI

New Listing!



OPEN HOME—SUNDAY 2.00—2.45pm
69 Peter Snell Road, Ruakaka

EASY-CARE, affordable @ the beach
This super low maintenance, tidy, 3 bedroom / 1 bathroom home is an absolute delight & positioned at a desirable location. Workshop with a fully lined extra room. If you have a love of the sun, surf and sand your search could stop here.
Price \$659,000 | bbrealty.co.nz #4178
FIONA SOUTHRN MNZM
Mob: 021 317 775

New Listing!



LIFE ON THE CANAL
Standing on a picturesque canal block, this home embraces the lifestyle... relaxation, entertainment, or just quiet living. Open plan living that allows you to create spaces that suit you and your personal requirements. Outdoor living spaces are amazing. So many extra features. Call for a private viewing.
Price \$2.75M | bbrealty.co.nz #4176
JOANNE DEWSON AREINZ
Mob: 021 780 622

New Listing!



OPEN HOME—SUNDAY 2.00—2.45pm
50 Ocean View Rise, Ruakaka

ON THE RISE
Our motivated Vendor is on the move. On offer is a low maintenance, double glazed four bedroom, two bathroom, two living area, entertainers' home. Spacious & functional galley kitchen. Open plan living, dining area that spills out to a private courtyard. Location is so central to all of our coastal amenities.
Price \$849,000 | bbrealty.co.nz #4177
JANINE GOLDSMITH AREINZ
Mob: 021 432 793

New Listing!



OPEN HOME—SUNDAY 11.00—11.45am
24 Tamure Place, Ruakaka

YOU SHOULD BE SO LUCKY
Fabulous A1 Home, with 3 bedrooms and two bathrooms, plenty of open plan living with sunny decks to the North and West. Backing on to the River Esplanade Reserve, such an easy flat walk to our Ruakaka Shopping Hub and all amenities.
Price \$815,000 | bbrealty.co.nz #4175
JANINE GOLDSMITH AREINZ
Mob: 021 432 793

Massive Price Drop!



OPEN HOME—SUNDAY 1.00—1.30pm
13 Kamahi Place, One Tree Point

LOCATION & OPPORTUNITY
This home is awaiting your creative touch. 3-bedrooms + study, 2-bathrooms, open plan living & dining area. Step out onto the spacious back yard & add some gardens if you choose. Situated on a flat section and within walking distance to the Harbour, café and day care.
Now \$829,000 | bbrealty.co.nz #4174
FIONA SOUTHRN MNZM
Mob: 021 317 775

4HA BLOCK NEAR THE SEA
A rare find in a sought-after location. Sandy, black peat soil and currently maintained by way of maize planting and stock grazing, this land is a flat rectangular shape. Wide road frontage and exposure on One Tree Point Road lends itself to lifestyle possibilities. bbrealty.co.nz #4163
Price \$699,000 + GST (if any)
FRANCIE STOKES
Mob: 022 656 0165