

Breem Bay News

Established 1967. Delivered FREE twice monthly

Phone 432 0209. email breambaynews@xtra.co.nz
 Mobile 027432 0070 Postal address - RD 2, Waipu 0582
 Website: www.breambaynews.co.nz LOCALLY OWNED AND OPERATED

22 July 2021

Affordable Quality

- * SECURITY DOORS
 - * INSECT SCREENS
 - * SHOWER DOORS
 - * BLINDS
 - * AWNINGS
 - * WARDROBE SYSTEMS
- Regular Breem Bay Service



PH: 438 9452

34 Albert St Whangarei
 Div. Shadelite Industry

Waipū skatepark to be built this summer despite price overrun

Despite the lowest quote coming in a good \$134,685 more than a Whangarei District Council's allocation for this project in its 20/21 budget the construction of the Waipū skate park (as the Council report refers to it) will begin in the Waihoihoi Park this October.

The Council has awarded Steve Bowling Construction the contract for the job. A report to the Council's Infrastructure committee details how the discrepancy will be met.

An allocation of \$50,000 for new skate parks will be brought forward from the 21/22 financial year and a further \$40,000 allocated for this purpose in 22/23 will also be used. In addition the Waipū Lions hold the sum of \$17,391.30 from fundraising for the skate park undertaken 20 years ago, The remaining shortfall of \$27,294.51 will be an "overspend" and, where possible, savings from other projects will be used to reduce this amount.

The construction cost is not the full story of how much this project will cost. The Council had earlier commissioned the skate park specialist Rich Landscapes to undertake consultation, design and provide and engineers estimate of the cost of construction. The estimation was \$190,034.60 around \$40,000 below the lowest quote.

Malcolm Norton, a long time member of the Waipū Activity Zone community group said, while he is pleased the activity zone is finally to be built he is disappointed the council process has not allowed local contractors to carry out some of the work as some had offered to provide their services at a discounted rate.

By way of comparison the Ruakākā Skate Park, which was built in 2016, cost \$127,000.

The design and labour were provided free of charge. In particular, the late Tony Jelas who had vast experience in sub-division development took charge of the project calling on many of his contacts in the industry to help out, while local people volunteered their labour over the weekend. Christine Thirling, Ruakākā Recreation Centre manager said an estimated \$107,000 worth of goods and service was provided free of charge. Christine said a recent valuation of the Ruakākā skate park facility is \$400,000.

A very clever dog



Tammy and Jet and chihuahua Poppy with Jet's Grand Champion *Do More with Your Dog* rosette.

Tammy D'Ath and her four-year-old border collie Jet have won a Grand Champ Title in an online dog training programme called – Do More with Your Dog. In just one month Jet learned 100 new tricks to advance through the titles – Novice,

Continued on page 8.



Langs Beach 1170 Cove Road

3 1 1

Tender

View by appointment

Christine Birss 027 235 4323 christine.birss@bayleys.co.nz
 MACKYS REAL ESTATE LTD, BAYLEYS, LICENSED UNDER THE REA ACT 2008

Classic Kiwi Bach

You asked for it, and now here it is – a classic Kiwi Bach within easy walking distance of the beach.

Not for those expecting to walk into a pristine house with modern ensuite etc, but those looking for character will love it here !!

With 3374sqm of land, there's scope to do more or else simply sit back and enjoy what is already there.

Here today gone tomorrow, so make up your mind quickly

bayleys.co.nz/1152508



Proudly serving Northland for over 35 Years



THINKING ABOUT SECURITY ?
FOR PROFESSIONAL & CONFIDENTIAL SERVICE
LOCALLY OWNED & OPERATED
CALL THE TEAM FOR YOUR FREE SECURITY CONSULTATION




Alarm Installation
Servicing
IP Camera Systems
09-4302303
Monitoring
Telephone Answering
24/7
09-4301992





MARSDEN PRINT


QUALITY COMMERCIAL PRINTERS

PROUDLY LOCALLY OWNED & OPERATED
SINCE 2004

**BUSINESS STATIONERY
PROMOTIONAL PRODUCTS
CARBONLESS BOOKS
LABELS, FLYERS, BROCHURES
SIGNAGE
FULL COPY & BINDING SERVICES**



1/16 Marsden Bay Drive, Ruakaka 
0800 432 898 | 09 432 8998 
marsdenprint@xtra.co.nz 
www.marsdenprint.co.nz 

 PRINTNZ member
our industry, our people

As seen on Grand Designs 2019



COASTAL CONSTRUCTION PROJECTS

REGISTERED MASTER BUILDER QUALIFIED TRADESMAN CARPENTERS MARCUS@CCP.NZ WWW.CCP.CO.NZ

0274 320 007



EDITORIAL

Don't forget where the money comes from

It is surprising how much projects undertaken by the Whangarei District Council cost. The price seems to go up expeditiously as soon as the Council takes on a job rather than if it were overseen by a community group.

The culvert installation at the bridge on Cove Rd. cost \$171,000 and now the Waipiti Skatepark with a price tag of has even taken the Council's engineering consultant by surprise.

There was, of course, extensive road health and safety associated with the Cove Rd. culvert and I imagine, even though it will be in the Waihoihoi Park and away from the road, the health and safety people and their road cones will be out in force here as well.

There were also an ecological advisor and an iwi cultural representative being paid to observe when any excavation took place at the Cove Rd. culvert installation. The presence of these experts was a requirement of the Northland Regional Council's consents for this work.

I asked the Whangarei District Council's communications advisor Ann Midson how much these observers were being paid and she declined to give me an answer just commenting that as these people are experts in their fields they get paid what any other professional expert would be paid. Similar observer requirements are in place for the new Pyle Rd east cliff top seawall and cliff top walking access, which has been allocated the sum of \$950,000.

Lots of beer and wine bottles and some sheep bones were the only artefacts recovered from the Cove Rd culvert excavation. As the ground there had already been dug over when the road was established, there were unlikely to be any items from earlier human habitation. It is interesting what these retrieved items say about the culture of the more recent settlement of Waipu Cove.

There is a lot of urgent work needed right now as we transition to a low carbon economy, adjust to more extreme weather events, build more houses and provide recreational facilities for our rapidly growing population. There is never enough money in Council budgets to achieve all the projects the community has identified.

I believe that we do need to be careful about what we are digging up, respectful of previous human habitation and mindful of the environment. We also need to protect the safety of people working in hazardous situations on and beside the road. But we should concentrate these efforts where they are needed. I feel much of what is happening is just a lot box ticking, which is putting the Council and consequently us ratepayers and tax payers to needless expense.

These are many reasons expenditure on Council and Government projects can get out of hand. There is a widespread assumption that government bodies have money to throw around. We should remember where this money comes from. The big picture is that taxes and rates should be put to used for the collective public good. All of us who supply services to any council or government project should make sure we give good value.

Marilyn

THE BREAM BAY NEWS

is published by Bream Bay News Ltd.
Address : RD 2, Waipu
Phone : (09) 432 0209 Mobile : 027 432 0070
Editor : Marilyn Cox, Accounts : Susan McRae
Advertising design :and website maintenance Megan Lea
Printed by Horton Media



SKIN CANCER DOCTORS

We are a primary care skin cancer clinic located in the Whangarei Town Basin. We focus on the early diagnosis and effective treatment of skin cancer in a friendly and welcoming environment.

- ✓ Full Body Skin Checks
- ✓ Dermoscopy Analysis of Moles
- ✓ Surgical & Non-Surgical Treatment
- ✓ No Referrals Needed
- ✓ Southern Cross Affiliated Provider
- ✓ Accredited Skin Cancer Doctors with the Skin Cancer College of Australasia



09 438 2188
131 Lower Dent Street, Whangarei
admin@skincancerdoctors.co.nz
skincancerdoctors.co.nz



Dr Celia Keane & Dr Christian Wieser



On a mission to get play equipment children with disabilities can enjoy in our local parks

Kylee Ostermann and Charlie Germain are on a mission. They want to see more facilities in local public places for children with disabilities to enjoy.

Kylee's nine-year-old son Alex has a rare genetic disorder and is unable to walk or talk. Kylee says it is possible that he will never advance beyond the intellectual development stage of a four-year old child. But Alex is getting too big for her to lift and almost all the local playgrounds lack something for him to use.

"All he wants is to join in on the fun like other kids do, but instead he ends up watching from the sidelines." Kylee said,

Alex loves swinging and there used to be a swing up at the town basin playground in Whangarei that Kylee could push his wheelchair onto but this was taken down when the new playground was installed.

Kylee and Charlie, a caregiver who helps look after Alex, have made contact with the Whangarei District Council Parks Department and have been told the wheelchair swing is in storage and, when they are ready, it can go in Waipū's Waihoihoi Park, near where the new skate park is soon to be built.

The swing will be concreted into place and a wheelchair friendly path will need to be built from the car-park. They have had lots of offers of help but are aiming to raise \$15,000 for the necessary materials.

Kylee said the swing is quite sturdy and would be available for older people in wheelchairs to use as well.

"Most people seem to like that swinging sensation. It would be something Alex could enjoy for the rest of his life."

Kylee and Charlie have lots of other ideas. Charlie is keen to set up a splash pad fountain that spurts water from the ground when activated by a wheel chair running over a pad. She said there are 16 splash pads in Auckland but none in Northland.

Charlie makes the point that families which have a child with a disability often choose to go on holiday in places that have facilities the child can enjoy, so the installation of some disability friendly play equipment would support the town's growing reputation as a popular holiday spot.

Kylee has dreams of establishing a garden raised to wheelchair height with lots of colourful flowers and scented herbs children can smell and taste and she has visions of a room with coloured lights and music and lots of different textured surfaces.



Charlie Germain and Kylee Ostermann are fundraising to install a wheelchair swing in Waipū for nine-year-old Alex and other people with disabilities to enjoy.

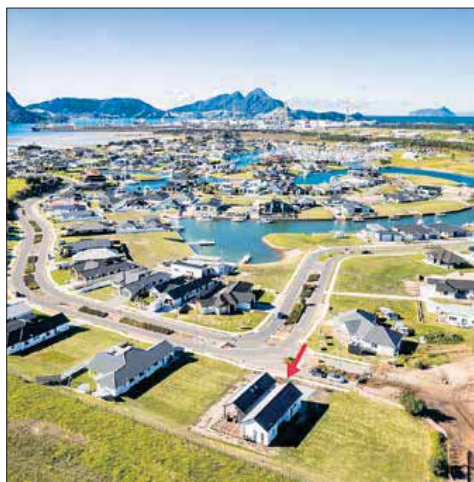
Alex attends a special class at Ruakākā Primary and enjoys his school routine but in the holidays it is very difficult to find things for him to do.

With the help of IT expert and advocate for people with disabilities Glenn McMillan Charlie and Kylee have set up a website and Facebook page and have a Give-a-Little page entitled: a wheelchair swing for the disabled.

Anyone who would like to make contact with Kylee, Charlie and Glenn can email: childrenwithdisabilitynz@gmail.com



Right: Alex enjoying a ride on a wheelchair swing



One Tree Point 80 Stace Hopper Drive

3 1 2 2

Set Sale Date (unless sold prior) 4pm, Thu 29 Jul 2021
84 Walton Street, Whangarei
View Sun 1.15-2pm or by appointment
Jan Anderson Halliday 021 380 032 jan.anderson@bayleys.co.nz
HACKYS REAL ESTATE LTD, BAYLEYS, LICENSED UNDER THE REA ACT 2008

Retire in style!

Marsden Cove with its level walkway around the waterways offers a slower pace of life and this brand-new home really does represent the ultimate in practical, easy-care living. Inside, this sun-soaked home boasts three bedrooms, two bathrooms and a highly functional kitchen complete with scullery. The vaulted ceiling and polished concrete floors add to the sleek modern feeling in the living spaces. Outside, the vaulted ceiling continues over a portion of the large sunny deck. The lovely home, the popular seaside suburb, and the proximity to an array of amenities combine to make this a truly compelling proposition.

Immediate action is advised. Contact me now to learn more.

bayleys.co.nz/1060229



Camp Waipu Cove

Phone 432 0410 www.campwaipucove.com
869 Cove Rd, Waipu

Three new architecturally designed, self-contained cabins under construction
One with accessible facilities.



Energy Star Holiday Park Waipu Tourism Challenge

BREAM BAY STORAGE

INSIDE/OUTSIDE storage at 50 Cove Rd., Waipu

Free phone. 0800 432 135
enquiry@breambaystorage.co.nz

www.breambaystorage.co.nz

RUAKAKA SAFE STORAGE

99 MARSDEN PT ROAD, RUAKAKA
92 Units from 6 x 3 to 1 x 1
Each unit individually alarmed and monitored
Electrified security fence

Ph. 0508 273 262 or 0275 310 788

CLEAN - DRY - SECURE

A great alternative to large general waste bins for smaller clean ups



It costs \$30 to hire a Portabin and then \$150 for us to pick up the bin once it is filled. You can collect a Portabin from our yard, from Waipu Hammer Hardware or Mangawhai ITM

MARSDEN METALS GROUP
WASTE BINS / DEMOLITION / SCRAP METAL

Ph. 0800 336 673
www.marsdenmetalsgroup.co.nz

THE NEXT PUBLICATION DATE

of the Bream Bay News will be Thursday 5 August
The deadline for all copy is 4pm on Wednesday 28 April

LETTERS

After all that love and effort it makes us want to cry

Yesterday Lu (my fellow Bream Bay Coastal Care member Lucina Cummings) and I went down to check on things in the refuge and returned with broken hearts.

We had, in the past, noticed that people seemed unaware of the seaward boundary of the Wildlife Refuge – that tiny part of our huge beach set aside and protected so shore birds can feed and breed relatively undisturbed. After consulting with neighbours and the Department of Conservation and the Northland Regional Council and the Whangarei District Council and Patuharekeke, the Bream Bay Coastal Care Trust raised funds and had a sign made to inform people of the refuge boundary and rules.

We put it up and days later found it discarded on the other side of the dunes. We re-erected it and some time later got a call from McLeods Bay residents to say our sign had washed up on their beach. After refurbishment, at the beginning of this year and with the help of The Ruakaka Surf Lifesaving Club and some strong young men from Patuharekeke the sign was re erected, this time with a couple of bags of cement. After six months of doing its job well it has again been vandalised, removed, taken away. All that love and effort! It makes us want to cry. Very upset,

*Sue Jolly
Ruakaka*

Waipū Op Shop gets a spruce up

The Waipu Anglican Opportunity Shop has recently been redecorated and I would like to publicly thank the many people who helped with the project.

The Op shop volunteers emptied the shop over 2 days ably assisted by Ron and Kay Dixon who continued to work each day over the project.

Goods and fittings were stored in a container provided by Darren Matich, and clothing stored in the Dixons' "bus".

Ian Hanna and his crew pulled up the old carpet.

Darin Pearce from Pearce's Flooring, Whangarei provided us with surplus carpet tiles.

Ron Cave, Graeme Goodall and Sue Foster from the Lions Club painted the interior of the Op shop with paint supplied at a discounted price from Resene.

We then had fun sorting the carpet tiles which were laid by Richard Hancock, Rex Roberts and the Dixons.

New bookcases, rail hangings and repairs were ably done by Rex Roberts.

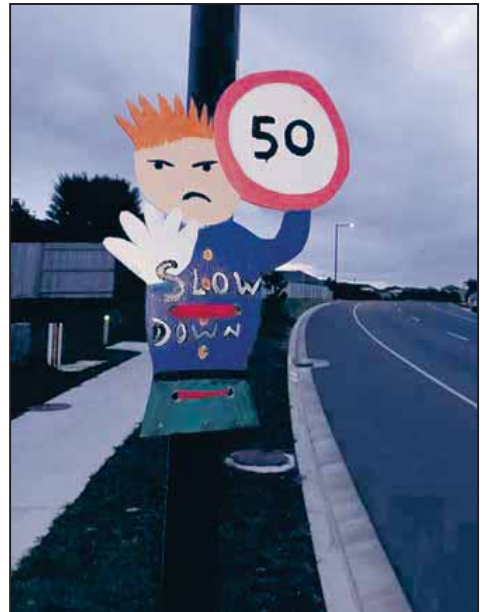
Our volunteers again worked hard restocking the shop.

The goods, services and hours of work given by the above people and our volunteers are a testament to the strength of the community spirit in Waipu. Those of us involved in the project are grateful to those helpers and have appreciated the camaraderie which comes from working together in such a venture.

We are delighted to have opened the shop again and look forward to welcoming our customers into a fresh shop.

*Sue Hancock
Chairperson, Waipu Anglican Opportunity Shop.*

How about some speed cameras in his eyes?



I read the letter in the newspaper about the home made speed sign. Sometimes I bike down that street to get to school, I see cars going very fast. I thought it might be a good idea to put a speed camera in the sign's eyes.

*Tia de Jong (seven years old)
One Tree Point*

An accident waiting to happen

Today on the way home from Whangarei, we got stuck in traffic that was being stopped to allow a series of motor bikes, utes, cars etc to turn off the main road into Toetoe Road. No idea what the reason was for this but obviously the police knew as a police officer was doing the traffic duty.

No problems with this except for when a Wellside ute comes down the main road and turns into said road. with four guys sitting on back tray of ute, feet in the centre, backsides on the sides of the tray! How legal is this and how come they were allowed to get away with this? Maybe police were waiting for them at their destination, I certainly hope so. They were just an accident waiting to happen!

*Lynn Field
One Tree Point*

Letters to the Editor are very welcome

Email them to: breambaynews@xtra.co.nz , Drop them off at the Waipu or Ruakaka Lotto shops

Or post them to:
The Bream Bay News, 547 Mountfield Rd. , RD2 Waipu, Postcode 0582

New measures to deal with disruptive behaviour at Bream Bay College

In his latest newsletter Bream Bay College Principal Wayne Buckland has announced some changes in how staff will deal with problem behaviour by some students in the junior school: Years 8,9 and 10 when this has impacts on the learning of other students.

The school has given its heads of departments permission to ban students from classes where their behaviour is disrupting the class or, as the newsletter puts it, "impacting the learning of the class in multiple areas"

The Deputy Principal and Dean assigned to the house the disruptive student belongs to, will work with that individual to get him or her back into the classroom in a way that "disruption does not continue".

A "behaviours book" will collect information on any "niggling behaviours" in each class including what has been done about them and the Deputy Principal will send out behaviour notes when a pattern is detected.

Ultimately if a student can't adjust their behaviours sufficiently " they will lose their place at the college."

Two students are currently removed from all of their classes.

The newsletter states that responses will be faster as the Dean or DP will deal with all aspects of an individual's problem behaviour.

The newsletter made reference to a report on TVNZ about several bullying instances, one a fight between two students at school and the second a student being bullied via social media and, as the student's father told national media, on the school bus. The school was, in fact, already dealing with these incidents; having called in the Police and by holding restorative justice meetings at the time the item on TV1 was aired.

Phone the BREAM BAY NEWS 09 432 0209 or email:breambaynews@xtra.co.nz if you know of something interesting going on in Bream Bay.

Croquet in Tartan



Wet weather has led to some Winter in Waipū events being cancelled or postponed but one that did manage to go ahead was the Tartan Tournament at the Waipu Croquet Club. Pictured above Sue Codlin of Waipū and John Schollum of Maungakaramaea dressed for the occasion. See page 8 for re-scheduled Winter in Waipū events.

Malcolm Norton
Exceeding Vendors' Expectations

13 Layci Lane, Waipu 4 🚗 2 🛁 2 🚿 2 🏠 4 📺 3,032 sqm ↕

This magnificent bespoke home has only just been completed, designed around the owners custom plan, you will surely be inspired. High quality fixtures and fittings have been used and these are very evident throughout. We welcome you through the double door entry, bringing you into the atrium of the "H" design layout, with the bedrooms on one side and the kitchen/dining/living on the other. Access to the living area is through two floor to ceiling, floating custom designed glass doors that make a bold statement. Seeing is believing, Give me a call today to arrange a private viewing.

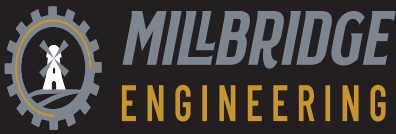
Auction
3:00pm Saturday 31 July, on-site 13 Layci Lane, Waipu (unless sold prior)

View
By appointment or open home. Scan the QR Code for more information!

Malcolm Norton 021 783 533
malcolm.norton@raywhite.com

PREMIER
MEMBER 20-21





ON SITE WELDING
MOBILE SERVICE
HEAVY & LIGHT FABRICATION
REPAIRS & MAINTENANCE
ALUMINIUM & STAINLESS

Rory McLean ☎ 021 55 77 94 | 09 556 0558
✉ rory@millbridge.co.nz 🌐 www.millbridge.co.nz



Shed stored.
Seasoned
hot mix blend
Pine, poplar and gum

Graham Matthews
Phone 027 432 1016
456 South Rd., Waipu
Email: gmmatthews@xtra.co.nz

Inaugural life membership for long serving Ruakākā Residents and Ratepayers secretary



Jules Flight, Chairman of the Ruakākā Residents and Ratepayers Association presenting the association's inaugural Life Membership to Warren Daniel, accompanied by his wife Jean.

At its July meeting the Ruakaka Ratepayers and Residents Association presented Warren Daniel with a Life Membership Certificate. This was the inaugural such award, and was made in acknowledgement of Warren's outstanding years of service to the Association and the community. Past President Peter Hope spoke glowingly about Warren's achievements and was joined by Councillors Shelley Demming, Phil Halse and Ken Couper, who were all highly complimentary in their tributes. Mention was also made of the great contribution that Warren's wife Jean had made behind the scenes. Warren joined the Associa-

tion in the 1980s and served as President before taking a break due to other commitments. The Association went into recess sometime later. It was in the early 2000s that Warren and others including Graeme Finlayson, Roger Neal and Bruce Cann were involved in rebuilding the Association. Warren became Secretary in 2003, a post he held for a mammoth 18 years, only relinquishing the position early this year due to ill health. Whilst Warren is no longer on the Committee, he will continue to hold an interest and contribute to association activities.

Phone the BREAM BAY NEWS - 09 432 0209
or email:breambaynews@xtra.co.nz
if you know of something interesting going on in Bream Bay.

Building in Whangarei, Kaipara, Far North



Pitt design 210sqm

\$434,750incl gst

Includes: plans, consent, kitchen, appliances, tinted double glazed windows, tiles, carpet, blinds, heatpump.



Wayne Pickerill
Managing Director

"Hi, I'm Wayne Pickerill, Managing Director and Project Manager for your new Fowler Home. Enjoy quality and all the benefits of dealing with an efficient, low overhead, nationwide company, where I will take a personal interest and be involved through to completion."



More designs at www.fowlerhomes.co.nz or visit our office at 63 Walton St, Whangarei. Phone Wayne Pickerill 438 4840

POLICE REPORT

One Tree Point crime surge



One Tree Point is experiencing a crime surge. Over the two weeks, 2 July – 16 July Bream Bay Police have been informed of 20 separate dishonesty offences in the area. These include thefts from cars, theft of cars, attempted thefts or break-ins to cars and burglaries. The offences have all occurred late at night or in the early hours of the morning. Sergeant Simon Craig, Office in Charge at the Bream Bay Police, said this in a huge surge in crime for One Tree Point and he advises people in the area to be careful with their security and to call the Police on 111 if they see anything suspicious.

Strong leads from CCTV footage on Waipū Cove and Langs Beach burglaries

There were two burglaries in the Waipū Cove and Langs Beach area over the past fortnight. Police have identified suspects from CCTV footage and are following up on these strong leads.

Nine family harm incidents

In the fortnight 2 July – 16 July Bream Bay Police attended nine family harm incidents.

Woman dies after crashing into Tamingi St. traffic island

A 57-year-old Ruakākā woman died after the car she was driving crashed into the traffic island on Tamingi St. Police arrived on the scene soon after the crash and attempted to revive the woman with no success. It is thought the woman suffered a medical event.

Crash in heavy rain at Nova Scotia Drive intersection

There was a two-car collision on State Highway One at the Nova Scotia Drive intersection at 11am on Sunday July 11 after a vehicle pulled out onto the highway into the path of oncoming traffic. It was raining heavily at the time.

Two car collision at McEwan Rd. / One Tree Point Rd intersection

A two-car collision occurred on One Tree Point Rd. on Wednesday 14 July when a car pulled out from the McEwan Rd. into the path of a vehicle traveling on One Tree Point Rd. There were no injuries

Continuation of bus service dependent on Waka Kotahi funding

The trial Thursday bus service, which takes people from Kaiwaka, Mangawahi Village, Mangawahi Heads, Langs Beach, Waipū Cove, Waipū and Ruakākā each Thursday morning returning in the afternoon, will be continued for the time being.

Anita Child, the Transport Projects Officer with the Northland Transportation Alliance said, "Passenger numbers are better than budgeted and we would like to continue the service. However, we are waiting on Waka Kotahi (the NZ Transport Agency) for funding announcements on all services.

She said, "The service will continue on a month by month basis until September then re-assessed based on funding announcements at this time."

Ruakaka Stationery & Gifts



Ruakaka Town Centre

Shop local for all your needs:

Stationery, Books, Toys, Magazines

Greeting Cards, Clothing,

Gifts & Souvenirs

Phone
432 8104



Open Saturday until 7pm.



20 Mamaku Drive, One Tree Point

4 🚗 1 🏠 2 🛏 2 🛎 2 📺 654 sqm ↕

Fish, golf, wine and dine. Absolute 'La Pointe' surprise.

- ▶ Located in La Pointe Estate with access to the private golf course and tennis courts.
- ▶ Bright open living space with vaulted ceiling.
- ▶ Chic tiled kitchen with durable stone benchtops.
- ▶ Alfresco areas - one off the kitchen and the other a central private space.
- ▶ Four generous-sized bedrooms, the master and guest bedroom each open to their own sunny decks via patio doors.
- ▶ Builders report (by Telfer Young) and full LIM available.

Auction

12:00 pm Wednesday 11 August, Ray White Bream Bay, Unit 5, 30 Rauiri Drive, Marsden Cove (unless sold prior)

View

Open Sunday 12:30 pm to 1:00 pm, or by appointment.



View the
property online



James Alexander

021 878 178

james.alexander@raywhite.com

PREMIER
MEMBER 20-21

Winter in Waipū events

Wet weather has resulted in some of the Winter in Waipū events planned for last week being rescheduled.

The Twilight Walk on the Waipū Walkway was postponed on Sunday evening 18 July and was due to be held on Tuesday 20 July when fine weather was forecast. The Pets in Tartan parade was called off on Saturday morning 17 July and will now be held this Saturday 24 July – pets and pipers to gather at 9.45 at the Pizza Barn.

The *On Ya Bike* event, which was originally planned for Sunday 11 July will now be held in the Waipū Caledonian Park on Sunday 25 July from 9.30am. There will be a rodeo race, ride the plank, a sow riding contest, follow the leader, an obstacle weave and other novelty competitions.

Great Debate with hecklers, wine, cheese and sweet treats

To finish off the month of tartan festivities there will be a “Great Debate” in the Celtic Barn on Thursday 27 July from 7-9pm. The subject will be “Should tartan be banned from Waipū”.

There will be moderators and a few hecklers and wine, cheese and sweet treats. Judy Boulton, one of the Winter in Waipū organisers, said Winter in Waipū 2021 had kicked off with street theatre on the theme of tartan wearing for Waipū Primary children and it was felt appropriate to end on the same vein, although this time the entertainment is for adults.

Please email: winterinwaipu@gmail.com or phone Judy 027 397 8933 if you would like to attend.

When the weather gets cold cockroaches move inside

That large, dark brown and orange insect scurrying across the wall of your living room is likely to be an American cockroach – *Periplaneta americana*. These insects are becoming increasingly common in northern New Zealand and when the weather gets cold, they move inside. If you catch one in your hand it can leave



An adult, therefore winged, American cockroach.

a terrible smell that takes some washing away.

They have large compound eyes designed for night vision and during daylight hours they squeeze their flat, hard-shelled bodies into cracks under doors and windows. If you disturb them they dash for the nearest dark crevice.

They eat just about anything including: starch in book bindings, paper, flakes of human skin, the oil and animal fat left behind on the plates and racks of your outdoor barbeque, dead animals, plants and dead and dying insects including other cockroaches.

According to a NZ Naturalist article found on Wikipedia cockroaches can spread diseases such as salmonella if they get into your food and house dust containing cockroach faeces and body parts can trigger allergic reactions and asthma in some people so perhaps its worth taking a bit of extra care cleaning the BBQ. Some interesting facts about the American cockroach

- Despite the name they originate from Africa and arrived in America around the 18th century.
- They are fast runners and can move at 5.4km per hour or 50 times their body length per second, which would be comparable to a human running at 330 km/h
- They have three distinct stages in their life cycle – egg, nymph and adult. The adults have wings and can fly but usually just run away when disturbed.
- American cockroaches are capable of asexual reproduction where females lay eggs that have not been fertilized by males to produce multiple clones of themselves. This method is used by insects to reproduce rapidly when favourable conditions exist for them. This is why your rose bushes can become covered in aphids seemingly overnight.
- If it loses a limb, an American cockroach nymph can grow a new one, which is perhaps why they are used in traditional Chinese medicine where an ethanol extract of the insect is prescribed for wound healing and tissue repair.

A very clever dog

Continued from page 1.



Jet puts on his *Shame* act with his paw across his eyes.

Intermediate, Expert, Expert Masters, Trick Dog Champion and Trick Dog Grand Champion.

Jet can read signs, which tell him to sit or to shake hands. He can tidy up a room putting items into a rubbish bin and he knows how to assemble a set of coloured, stacking cups.

When Tammy says “Shame” he covers his eyes with his paw and when she says, “Be a bad dog” he pretends to pee on her guitar.

Tammy made videos of Jet performing his tricks and submitted them to the *Do More With Your Dog* organization through its website. The Grand Champ rosette and the various certificates arrived in the mail.

Tammy says both she and Jet have thoroughly enjoyed the training sessions and she encourages other dog owners to have a look at the *Do More With Your Dog* programmes.

He might be a Grand Champ but there are still more tricks to learn. Jet and Tammy are now working on DMWYD Stunt Dog and Canine Conditioning Fitness Titles. Tammy is well known in Bream Bay as a singer who won a Find a Star competition in 2010. She works as an artificial insemination technician and after finishing this work in Northland will be leaving for the South Island to inseminate the big dairy herds around Canterbury.

When she gets a break she takes Jet to dog agility trials. Jet is excelling in this area as well having already won several competitions.

Refurbished Waipū toilet block partially open for use

Half of the refurbished Waipū toilet block is now open. The women’s and disabled access toilets are open while the men’s toilets remain closed.

Graham Boulton, of the Waipū Business and Community group, which oversaw the upgrade, explained in the last edition of the Bream Bay News that the hold up was due to the late arrival of some stainless steel toilet bowls ordered from Europe. Graham said the imports still hadn’t arrived but some bowls for the women’s and the disabled access toilets had been found locally.

He said he expected the toilet bowl order to arrive in a few weeks time. In the meantime portable toilets remain on site for men to use.

The new toilets have polished floors, tiled walls and automated hand driers.

Local people read **THE BREAM BAY NEWS**
It is an effective place to advertise

Local dancers qualify for national competition



The Pulse Advanced Team - going to the NZ Performing Arts National Competition. From left: Kowen Phillimore, Nia Owen, Darnika Williams, Adjudicator (Lizzie Clarke), Laynie Groom, Briana Reynolds, Caitlin Agustin, Rowan McInnes, Chassedy Agustin, Ava Mewett, Shanelle Rae. Missing: Tori Smith, Ruby Stewart.

Ruakākā's Pulse Dance Studio is celebrating the success of its young dancers who have qualified to take part in the New Zealand performing Arts national competition in October. Ruby Stewart, Rowan McInnes, Caitlin Agustin and the Pulse Advanced Team with a musical theatre routine have all qualified for this event. Pulse Dance Principal and Director Krystal Williams - Tuhoro said, "This is a massive achievement for one small community"

Northland Transportation Alliance GM at Waipū Ratepayers meeting

The Waipū Residents and Ratepayers Association has booked two guest speakers for its Annual General Meeting. First up will be Jon Pheloung of Waka Kotahi who will speak on proposed safety upgrades for the stretch of State Highway One between Whangarei and Wellsford and, more specifically, about the highway and its intersections as it runs through Bream Bay, Second up will be Calvin Thomas, General Manager of the Northland Transportation Alliance, who will talk about: unsealed road maintenance, the recent speed limit review and various road safety concerns.

The Northland Transportation Alliance (NTA) is a collaboration between the Whangarei, Kaipara and Far North District Councils, Northland Regional Council and the New Zealand Transport Agency to deliver combined transportation services for Northland. Maintenance and upgrades of all Bream Bay's rural roads is now managed by the NTA. The meeting is open to all and will be held in St Peters Anglican Church in Nova Scotia Rd., Waipū at 7pm on Wednesday 28 July.



Thinking concrete but don't know where to start?

Think Atlas Concrete

- We quarry the aggregate
- We manufacture the concrete
- We site visit to advise the best options
- We give you the choice of mix and colours
- We give a choice of local placers for you to choose
- We manufacture concrete to your requirements
- We stand by our product, you stand on it

Atlas Concrete
Your First Call for Concrete
Ph: 0800 888303 - Brynderwyn
or 432 5030 - Ruakaka



Owner /Operator Duncan Mackay



GENERAL CARTAGE SERVICE
 Metal / Topsoil / Sand / Manure / Hay / Silage



WATER
 Prompt Delivery And Reliable Service.
 Healthboard Approved Drinking Water Carrier.

Call 021 070 8211



Community Hui

With Emily Henderson MP for Whangārei

Bream Bay

Come along and share your views about how we can work together for the future of Bream Bay.

Saturday 24 July, 4:00pm – 6:00pm

Ruakākā Recreation Centre, 9 Takutai Place, Ruakākā

[f /EmilyHendersonMP](#)
Emily.HendersonMP@parliament.govt.nz



Labour

Authorised by Dr Emily Henderson MP, Parliament Buildings, Wellington

Northland COVID-19 Vaccination Update

Over 57,000 Northlanders have now received at least their first COVID-19 vaccination.

NORTHLAND DHB COVID-19 Vaccination CLINICS

At the moment we're vaccinating people:

- aged 50 years and over, or kuia, kaumātua and their whānau (the people they live with and their carers), and people
- aged 16-64 and have a relevant underlying health condition, or
- are disabled, or
- are in a position of caring for a person with a disability, or
- are pregnant (any trimester).

If you are in the above groups, you can expect to receive an invitation from Northland DHB to book a vaccination appointment by 23 July.

If you do not receive an invitation by then, please get in touch with the national booking 0800 number - **0800 28 29 26**.

Nationally, the vaccine rollout for Group 4 will be in age bands and will start on 28 July.

The first age band is people aged 60 years and over – they will be able to book their vaccinations from 28 July.

The next age band is people aged 55 and overbookings for this age band will open two weeks later, on 11 August.

Once it's your turn, you can be vaccinated at any time – there's no cut-off. You can register your details on Book My Vaccine any time from 28 July.

This means that when it's your turn, we will have your most up-to-date contact details and can send you an invitation to book your vaccinations.

Depending on vaccine supply and progress with other age groups, invitations will open up to people over 45 years from mid to late August and from mid to late September for people 35 plus.

Everyone else will be eligible from October.

MĀORI HEALTH PROVIDERS - COVID-19 VACCINATION CLINICS

Māori Health Providers are hosting COVID-19 vaccination clinics for Māori aged 16 years and older.

For more information about making a booking or local walk-in clinics contact a provider on the number below.

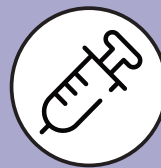
- | | |
|---|--|
| • Whakawhiti Ora Pai
09 409 7880 | • Ngāti Hine Health Trust
0800 272 4842 |
| • Te Hiku Hauoro
0800 808 4024 | • Te Ha Oranga
09-439 3013 Option 1 |
| • Kāeo COVID-19 Vaccination Centre
- 0800 465 236 | • Kia A Ora Ngātiwai
09 435-4586 |
| • Te Hau Ora O Ngāpuhi
0800 484 006 Option 1 | • Te Hau Āwhiowhio o Otangarei Trust - 0800 888 497 |
| • Hokianga Health Trust
09 4057709 ext. 709 | |

GOOD PLACES TO GET INFORMATION ARE:

www.covid19.govt.nz
www.immune.org.nz
www.health.govt.nz
www.northlanddhb.org.nz

Me whakapapa te ora Hoki ki ngā tūāpapa

Connecting to practices that nurture wellbeing



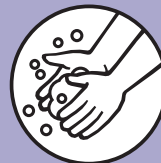
Immunisation is one way to protect whakapapa. Being immunised helps our bodies build strong defences if we get sick



If you have COVID-19 symptoms, contact Healthline on **0800 358 5453**



Stay home if you are sick, stop the spread of illnesses and take care of your whānau



Wash your hands thoroughly with soap and hot water



Keep track of where you have been with the NZ COVID Tracer app



Coughing and sneezing into your elbow is one way to prevent spreading illnesses

These are simple ways we can protect ourselves from COVID-19

Kia pūmau te ora - to maintain wellbeing

Information provided is current as at 13 July, 2021.



Ngā Tātai Ihorangi

*Kia tupu ora ai ngā uri whakatupu
That the generations yet to come
will grow and flourish*

Information provided is current as at 01 June, 2021.

**NORTHLAND DISTRICT
HEALTH BOARD**

Te Poari Hauora Ā Rohe O Te Tai Tokerau



Brynderwyn trappers eliminate 3521 predators in 2020/2021 year

Maranui Conservation was named *Trapper of the Year* at the Piroa / Brynderwyn landcare group's celebration of its year long achievements on Saturday night 17 July. In the year to 30 June 2021, the group trapped 157 possums, 123 rats, 14 stoats, 5 weasels, 5 cats and 31 hedgehogs.

Piroa /Brynderwyns was identified as having high conservation values by the Northland Regional Council in its 2018 – 2028 Long Term Plan. The some of \$170,000 per year is allocated by the NRC for pest animal and plant eradication in this area.

Twenty-one separate trapping groups now operate here, some of these community groups and others private landowners, development companies and Hancock Forestry Management who employ professional trappers.

A recent development is a new trapping group set up to the west of Waipu incorporating Finlayson Brook, Shoemaker and Helmsdale Roads.

With the addition of this new area the Piroa/Brynderwyn Landcare area now covers 25,000 hectares and includes the town of Waipū at its northern edge and south to Baldrock in Kaiwaka.

Trapping totals for the 12 months to the end of May 2021 were: 788 possums, 2107 rodents, 114 weasels, 4 ferrets, 153 stoats, 36 feral cats, 9 pest birds (myna and magpies) and 286 hedgehogs.

The group also recorded 2240 hours of volunteer work taking out noxious weeds.

Part of the reason for the area's special status is the release of 40 North Island Brown Kiwi on the Privately owned 423 ha Maranui conservation block on the southern slopes of the Brynderwyns from 2013. As this population grew and moved outwards from the Maranui block it became imperative to control predators in the surrounding area.

Kiwi calls were recently recorded in Cullen Rd. and on Bream Tail farm.

People interested in joining the Brynderwyn/Piroa landcare effort can Contact Graeme Giles 021 118 4816 or Peter Hunt 021 666 779 .

Public consultation open on Northland Civil Defence Emergency Management Group Plan

A draft Northland Civil Defence Emergency Management Group Plan 2021 -2026 Has been prepared and is open for public consultation.

The plan is a requirement of the Civil Defence Emergency Management Act and is available on the Northland Regional Council website.

The CDEM Group has identified flooding caused by localized heavy rain as the highest risk in the Northland Region.

"Northland has several short, steep river catchments which can flood quickly in intense rainfall."

"Landslips are a frequent consequence of rain in Northland due to the steep topography and the soil structure.

"The frequency and severity of hazards is increasing due to climate change."

A severe widespread storm and human pandemic are identified as the next biggest risks.

Tsunami are given a high risk rating along with transport and supply chain disruption, cyber attack, electricity failure, and drought.

"Northland has over 3,000 kilometres of coastline with many homes and businesses located on the coast."

The Northland CDEM Group Plan 2021-2026 draft is available for public consultation until 1 August 2021. The Plan is available to view on the NRC website on its have –your–say page and in a paper version at Northland Regional Council Offices.

Six possums in two nights



A possum trap which automatically resets itself killed six possums over two nights when it was set in bush at the back of the Wilson's Dam recently.

The trap is an AT110 and one of 30 supplied to Kiwi Coast by the Northern Division of the Masonic Lodge.

Brian Reynolds, a member of the Lodge, who traps on and around his property near the dam, explained the trap could reset after it has killed a possum. The dead possum in the trap is released and falls to the ground after around 20 minutes. The trap then rebaits with a mayonnaise lure and resets.

"Theoretically it can reset every half hour", Brian said.

He said in the years he has been trapping possums and other predator animals around his own and some of his neighbours' properties he has noticed a marked increase in the numbers of native birds and forest regrowth.

Gregg Chisnall, of the newly established Ruakākā Forest Pest Control group, said after the initial two nights the catch rate on the automated trap slowed to two a night and then one per night as the numbers of possums in the area dwindled. However once the residential pigs locate the dead possums they eat them and it's hard to confirm a catch rate without the use of a trail camera.

Masonic Lodge District Grand Master Ron McCracken said the Lodge has undertaken to sponsor the Kiwi Coast Northland pest eradication programme for three year, donating \$10,000 per year towards trapping equipment.

The AT 110 traps were bought with the first allocation of funds last year. This year's allocation would go towards some trap monitoring equipment that would send out a signal when a trap has been sprung and the third year of funding would go towards a new type of trap designed to catch stoats and weasels.

Another major project of the Northern Division this year is sponsorship of the New Zealand Special Olympics, which will be held in Hamilton next summer.

WAIPU LOTTO & POST



Lotto
Postshop
Photocopying

Emailing
Newsagents
All stationery needs



The Centre, Waipu

Phone 432 0900

A hundred years of croquet in Waipū

The Waipū Croquet Club will celebrate its 100th anniversary next month with members invited to wear period costume for a special luncheon at the croquet grounds.

The game was introduced to Waipū at the home of Mrs. J.N. McKay of Ferry Rd. and eventually moved to the Caledonian Park at the location that is now occupied by the Waipū Tennis Club until in 1921 a parcel of land at the opposite side of the park was given over to the croquet players. The game was popular with 41 players at a time when Waipū's population as recorded in the 1921 census was 518. The members worked hard to turn rough paddock into lawns and to set up the club. Four greens were established with soil laid to a depth of four inches in some parts and sown in grass. A hundred and fifty Chinese privet trees were purchased and planted around the western and northern sides of the greens "to afford protection from the prevailing winds."

In September 1921 they held a Poverty Ball to raise funds and each member contributed a guinea. They continued with socials every few months to

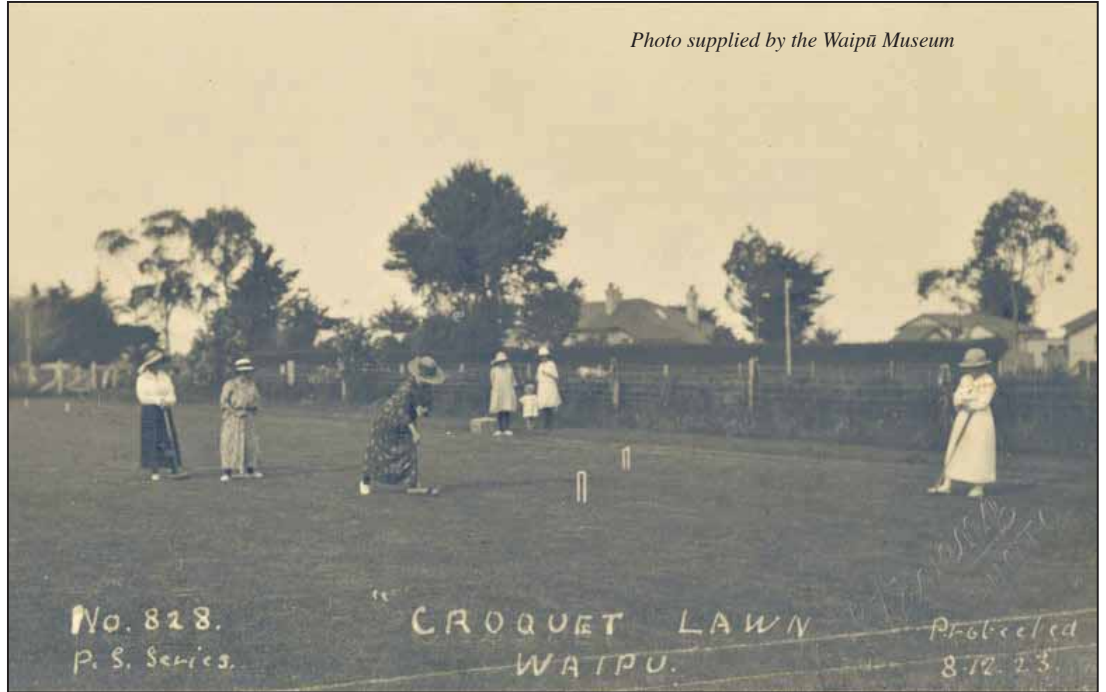


Photo supplied by the Waipū Museum

Croquet was popular in Waipū in 1921

raise funds for grass seed, top soil, wages for a lawn keeping and marking and towards an annual rental of two pounds paid to the Caledonian Society.

A set of rules were adopted on 5 August 1922. Mr. A.E Smith and Mr. McKay resigned from the roles of president and treasurer, giving these roles over to the ladies. The gentlemen it seems went across to the bowling club next door and from this time it seems a close relationship existed between the two clubs with afternoon teas provided by the croquet ladies.

The first pavilion was built in 1923. In 1949 Mr. Fritz Schultz was asked to build a shed with scraps from the timber company.

Membership had waned at times over the years. In 1934 there were just 13 paying members. In 1951 there were 31 and in 1971/72 it had dropped again to 12.

The club joined the NZ Croquet Council in 1934. Invitations to play at Waipū were sent to Croquet clubs

in Whangarei, Paparua, Kensington, Hikurangi and Portland and a competition was established for "the Harrison Brooches".

On closing day April 20 for the 1934/1935 season competitions were held in Progressive Croquet, Golf Groquet, Hoops and Bulls-eye.

In 1948 members were asked to send a donation from the croquet funds to the Children of Britain. There were regular socials, bring and buys and raffles and mid-winter dinners at the Clansman and the Waipū Hotel.

Over the years there has been the odd spat. In 1960 a letter was received from members Mrs. I. McLeod, A. Couper and M. McMillan stating that due to "the constant complaining and criticism concerning their actions, the match committee feel they do not have the confidence of the Club and are very willing to resign if a no confidence motion is carried."

After a short discussion, club President Mrs. McLean

called for a show of hands and the committee was asked to continue.

Six shelters were built in 1961 at a cost of twenty-one pounds. At a meeting in 1964 members requested a new 200l water tank and a new teapot. Electricity had arrived in 1938 but tin 1968. Perhaps club members had decided electricity was not needed.

The Waipū Croquet Club has enjoyed a resurgence in recent year.

Down to just 17 members in 2018 it had experienced a resurgence with 57 signed up members.

In 2015 with Gordon Walker as President the club got to work planning and fundraising for a new clubhouse. After being held up by Covid 19 Mitre 10 builders of Whangarei delivered a new clubhouse on 19 May 2020.

Landscaping Supplies:
Waikato Screen Topsoil
Bark
Woodchip
Mill Bark
Post Peelings
Compost
Crushed Shell
Topsoil
Limestone Chip
Daltons Garden Mix

Aggregate:
Cap: 20, 40, 65
Riverstone
Sand
Belt Dust
40/20 Drainage Metal
Builders Mix
Concrete

Timber/Fencing Supplies:
Rails, Posts
Stays, Strainers
Fence Battens
Fellings
Stakes
Fencing Wire
Farm Gates & Hardware

Drainage:
PVC Fittings
Alkathene
Draincoil

Water Tanks:
Aqua & Buxley Brands

Drainage & Septics:
Land Drainage
Urban Rural Drainage
Water Pipelines
Culverts
Septic Systems
(RX Plastic & Biorock)

Biteworks:
Retaining Walls
Piling
Driveways
Carparks

Serving Locals, Supporting Locals, For Over 30 Years

2088 Paparua valley Rd, Paparua
 Opening Hours: Mon-Fri (7am-5pm) Sat (8am-12pm) Sun (Closed - Family Time)
 Email: admin@huband.co.nz | Phone: 09 431 8339 / 0800 254 449



The arrival of the new clubhouse in May 2020.

A successful night for Bream Bay Surf Lifesaving clubs



Lucy Manning of the Waipū Surf Lifesaving Club was named Northern Region Rookie of the Year

Bream Bay's Surf Lifesaving Clubs came away with some top awards at the Toyota Financial Services Surf Life Saving Northern Region Awards of Excellence held in Auckland on Saturday night 17 July.

Tania Ahrens of the Ruakākā Club, won Surf Official of the Year, Lucy Manning (Waipū Cove SLSC) won Rookie of the Year, Jaine Curran (Waipū Cove SLSC) won Instructor of the Year, and the Waipū Cove Emergency Call Out Squad won Innovation of the Year for its Coast Watchers initiative, which established a network of spotters along the Bream Bay coast to support search and rescue efforts. Eighteen clubs from Raglan to the Far North attended the awards.

Kath Manning, Waipū Club Captain said it was a very successful night for her club and she is "Super proud of our team to be recognised for all their voluntary hours and effort they have put in over the season and their commitment to keeping the community safe in the water."



Tania Ahrens of the Ruakākā Club, won Surf Official of the Year

WHAT'S ON IN BREAM BAY

- **RESCHEDULED WAIPŪ VET CENTRE PETS IN TARTAN PARADE.** Saturday 24 July. Pipers, and pets to assemble at 9.45am outside the Waipū Pizza barn. Parade finishes outside the Waipū Vet Centre.
- **OTP ARTISAN MARKET** One Tree Point School and Hall. Sunday 25 July 9am - 1pm. Proceeds to the Whangarei Hospital Children's Ward.
- **ON YA BIKE EVENT**, which was originally planned for Sunday 11 July will now be held in the Waipū Caledonian Park on Sunday 25 July at 9.30am. There will be a rodeo race, ride the plank, a sow riding contest, follow the leader, an obstacle weave and other novelty competitions.
- **GREAT DEBATE** in the Celtic Barn on Thursday 27 July from 7-9pm. The subject will be "Should tartan be banned from Waipū".
- **FUNDRAISING DINNER** With guest speaker Eric Rush and MC Jenni Carr. In the Wapū Celtic Barn Friday 30 July. Tickets \$60 from Waipū real Estate. Proceeds to the Boulton family to assist Janine and Evie while Janine undergoes cancer treatment in Auckland.
- **MID WINTER CHRISTMAS AT THE RACES** Saturday 7 August. Gates open 11.30am. First race expected around 12.30pm. Last race 5pm. Mid-winter Christmas dinner available \$60pp. visit: ruakakaracing.co.nz to book.
- **WAIPŪ LIONS SENIOR CITIZENS LUNCH.** Saturday 7 August from 12 noon. Please RSVP to Sharon Carroll on 027 265 3227 for catering numbers
- **THE WAIPŪ SUNDAY MARKET** next on Sunday 8 August. 9am - 1pm in the Coronation Hall
- **THE MARSDEN COVE MARKET** Next on Sunday 15 August from 9am - 1pm. In the big marquee at Marsden Cove
- **WAIPŪ MUSEUM** 36, The Centre, Waipū. Open seven days 10am - 4pm
- **KAURI MUSEUM.** Open daily 9am - 5pm. 5 Church St. Matakōhe. Current exhibition Portraits of Our People An exhibition of portraits from the past, the present and the future, featuring Kaipara residents, made by Kaipara people. www.kaurimuseum.com

FRIDAY 30 JULY

fundraising
DINNER

Celtic Barn, Waipū
DOORS OPEN 6PM



with **Guest Speaker - Eric Rush** and **MC - Jenni Carr**

All proceeds will go to the Boulton family to assist Janine and Evie whilst Janine is undergoing extended cancer treatment in Auckland

\$60 per ticket

Buffet Dinner
Cash bar and Auction

Tickets from
Waipū Real Estate
7 The Centre, Waipū ☎ 432 4000

MARSDEN POINT TIDES

	AM		PM	
Thu 22 July	5.11	2.6	5.58	2.7
Fri 23 July	6.13	2.6	6.55	2.8
Sat 24 July	7.11	2.6	7.49	2.8
Sun 25 July	8.06	2.7	8.40	2.8
Mon 26 July	8.59	2.7	9.29	2.8
Tue 27 July	9.48	2.6	10.16	2.8
Wed 28 July	10.36	2.6	11.02	2.7
Thu 29 July	11.22	2.5	11.47	2.6
Fri 30 July	~	~	12.09	2.4
Sat 31 July	12.31	2.5	12.56	2.4
Sun 1 August	1.16	2.4	1.46	2.3
Mon 2 August	2.03	2.3	2.39	2.3
Tue 3 August	2.53	2.3	3.36	2.2
Wed 4 August	3.45	2.2	4.32	2.3
Thu 5 August	4.39	2.2	5.25	2.3
Fri 6 August	5.32	2.3	6.13	2.4

Waiheke visitors draw a big crowd at Takahiwai League Club



Players of both teams line up to shake hands after a hard fought match.

The one and only senior league game to be played this season at the Takahiwai grounds drew a large enthusiastic crowd of supporters on Saturday 10 July when the Waiheke Rams travelled north for the match. With no competition in the Whangarei district this season Takahiwai's Northpine Warriors have joined the Auckland league playing in the Ray Cranch Premiership.

Waiheke and Takahiwai were scheduled to meet at Leigh but Waiheke, which also has problems getting opposing teams onto its home turf, agreed to come to Ruakākā instead. Takahiwai Club President Shane Hool

said before the season is over he hopes Takahiwai can return the favour and take the Northpine Warriors on a ferry ride to Waiheke.

The Northpine Warriors made good use of their home advantage beating the top of the table Waiheke team 28 to 12.

Last Saturday, 17 July, met the Avondale Wolves be in the west Auckland suburb of Mt. Roskill. The score was Takahiwai 20 - Avondale 22.

Waiheke and Avondale are currently first equal in the competition. Takahiwai sits just two points behind in third equal place along with Mangere East.



Takahiwai players mount their defence against a resurgent Waiheke team in the second half.

**Bream Bay
Garden Maintenance**

Spring Tidy Up · Landscaping · Planting
Hedges trimmed · Trees trimmed
Weed control · Pruning · Rubbish removed
House washed · Water Blasting · Building
Painting · Free quotes

NO JOB TOO SMALL

One Offs, Weekly, Fortnightly or Monthly

Phone Marcus 021 343 727

**STORAGE
BREAM BAY**
76 Waiwarawara Dr, Ruakaka

NOW OPEN

- PHONE ENTRY AUTOMATED ACCESS
- SECURITY FENCING & CAMERA SURVEILLANCE
- COMMERCIAL KITCHEN, MEETING ROOM & OFFICE SPACE FOR HIRE
- FULLY INSULATED & VENTILATED STORAGE SPACES FROM 9 TO 84 CUBIC METRES

www.storagebreambay.co.nz
info@storagebreambay.co.nz
Phone: 021-432 701
76 Waiwarawara Drive,
Ruakaka 0171



**Phone the BREAM BAY NEWS - 09 432 0209
or email: breambaynews@xtra.co.nz
if you know of something interesting going on in Bream Bay.**

Stormy weather for BB Classic



Left to right, Waipū Golf Men's Club Captain Doug Shadbolt with Amy Han Women's Division winner, Tyler Wood third time Men's Open winner, Dell Bain Masters winner and Gaylene and Richard Wilson of Northpine, the Bream Bay Classic major sponsor

This year's Bream Bay Classic held on 10 and 11 July had to be shortened to 36 holes as stormy weather on Sunday 11th prevented the third round from being completed.

The tournament drew top amateur players from the upper half of the North Island. The Men's Open division was won for the third year in a row by Tyler Wood of the Ngahinepouri Club in Hamilton with runner up Dale Clark, from the Omanu Club - Mt Maunganui and third place winner Ben Jujnovich of Redwood Park Auckland. The Women's division was won by Amy Han from the Titirangi Golf Club. Runners up were Anna An and Fleur Reynolds, both members of the Muriwai club. The Masters division was taken out by Dell Bain from Gulf Harbour, with Paul Allen (Hikurangi) and Nathon Jacoby (Waipū) in joint second place. The Classic was sponsored by Northpine, Pak and Save, the Ruakākā Beach Front Motel and Kauri Creations.

BREAM BAY

link

Operates every Thursday from 1st August 2019

MORNING

9.00am	Departs	Kaiwaka Kaiwaka Hall
9.15am	Departs	Mangawhai Village Village Shops Bus Stop (by restrooms)
9.20am	Departs	Mangawhai Heads I-Site
9.35am	Departs	Langs Beach Corner of Wairahi and Cove Roads
9.40am	Departs	Waipu Cove Beach Car park
9.50am	Departs	Waipu Monument Bus stop
10.10am	Departs	Ruakākā Peter Snell Road (opposite Takutai Place)
10.50am	Arrives	Whangārei Rose Street Bus Terminus

**For travel within Whangārei see CityLink Whangārei timetable www.citylinkwhangarei.co.nz or get your timetable from the Rose Street office.*

AFTERNOON

3.00pm	Departs	Whangārei Rose Street Bus Terminus
3.40pm	Departs	Ruakākā Peter Snell Road (opposite Takutai Place)
4.00pm	Departs	Waipu Monument Bus stop
4.10pm	Departs	Waipu Cove Beach Car park
4.15pm	Departs	Langs Beach Corner of Wairahi and Cove Roads
4.30pm	Departs	Mangawhai Heads I-Site
4.35pm	Departs	Mangawhai Village Village Shops Bus Stop (by restrooms)
4.50pm	Arrives	Kaiwaka Kaiwaka Hall

OPERATED BY

Ph: 0800 994 404
E: office@leabourn.co.nz

FARES	One Way	Return
Kaiwaka	\$7.00	\$10.00
Mangawhai	\$7.00	\$10.00
Mangawhai Heads	\$7.00	\$10.00
Langs Beach	\$7.00	\$10.00
Waipu Cove	\$6.00	\$8.00
Waipu	\$6.00	\$8.00
Ruakākā	\$5.00	\$7.00

ROUTE DESCRIPTION

Kaiwaka/Mangawhai Road, Molesworth Road, Mangawhai Heads Road, Cove Road, The Centre Waipu, Nova Scotia Drive, SH1, Marsden Point Road, Peter Snell Road, Marsden Point Road, SH15A, SH1, Otaika Road, Maunu Road, Walton Street, Rose Street Bus Terminal.

If you would like to be picked up elsewhere along the route, please phone Leabourn's to arrange this on the Wednesday before you want to travel.

CONTRACTED TO:

 For service updates visit:
www.buslink.co.nz
 Feedback to buslink@nrc.govt.nz

TRADES & SERVICE DIRECTORY Ph 09 432 0209

Susan, the Painter

Phone for a free quote

Ph. 027 370 5339

Des Potton Builders

021 833 622

despotton@hotmail.com

Garage Carpet

Transform your garage with garage carpet, door insulation, and storage systems.

Garage Pro

www.garagepro.co.nz
tony.b@theprogroup.co.nz

Call Tony 021 932 142 for a free quote.

astech electrical
N O R T H L A N D

Electrical Contracting & Repairs
 Electrical Inspector, Caravan EWOFF,
 Coolrooms, Air con., Heat pumps

P: 09 432 7968 M: 0274 780014
 E: ashtond@astech.biz

THE MAINTENANCE

www.themaintenance.co.nz

- ❖ Chemical and non-chemical house washing
- ❖ Window and house cleaning
- ❖ Painting and staining – exterior house, decking and fences
- ❖ Water blasting - decks, driveways and courtyards
- ❖ Clean guttering and downpipes
- ❖ Pest control and spider spraying
- ❖ Tree trimming with extension saw

Phone now for a **FREE QUOTE**

REVITALISE ❖ PRESERVE ❖ PROLONG ❖ MAINTAIN

TONY 021 196 2949 OR MELISA 021 075 6770

TRADES & SERVICE DIRECTORY Ph 09 432 0209



BRADLEY EARTHWORKS

- POND CLEANING • DRIVEWAYS • RACEWAYS
- LAND CLEARING • TREE REMOVAL • ROADING AND MORE!

CALL ME TODAY FOR ALL YOUR EARTH & TREE WORKS
PHONE ROY 027 374 5090 WAIPU

Ph: 09 432 0123

BREAM BAY GLASS
 FOR ALL YOUR GLASS NEEDS



Mob: 0274954548



FAST WINDSCREEN REPLACEMENTS & CHIP REPAIRS

- Mobile service or come to our workshop
- Ultra competitive pricing. • Insurance claims welcome.
- Windscreen replacement in under an hour.

Phone Conrad on 022 036 2916
 2/17 Gumdigger place.



O'MALLEY CONTRACTING LTD | CONCRETE SPECIALISTS

- FOUNDATIONS
- HOUSE SLABS | STAIRS
- RETAINING WALLS
- DRIVEWAYS | CARPARKS
- EXPOSED AGGREGATE
- COLOURED CONCRETE
- COMMERCIAL | RESIDENTIAL
- LICENCED BUILDING PRACTITIONER

Free No Obligation Quote

FAMILY OWNED & OPERATED

021 2200 198 | O'MALLEYCONTRACTING.COM

ABSOLUTE CONCRETE

www.absoluteconcrete.co.nz

CULVERT PIPES
 Spun and reinforced

Crane truck delivery
 Drainage Merchant - Hardware Store
 Email: sales@absoluteconcrete.co.nz
 Phone (09) 431 2211
 KAIWAKA



WE BUILD, HIRE, ALLOY MOBILES, TEMPORARY FENCING, & SHRINKWRAP

Ph: 09 432 7643 • 0274 726 772
macsway@xtra.co.nz Kepa Road, Ruakaka



Registered Electrician

KIRK ROBBINS

Mob: 021 236 9551

- Residential • Commercial
- Alarm Installation & Maintenance

Bream Bay Concrete Ltd.

Free Quotes • Reliable Service • Quality workmanship

- Concrete pads
- Shed floors
- Pathways
- Home floors
- Driveways
- Concrete cutting
- Excavation works
- Retaining walls
- Piling fences
- Profiles for homes & sheds
- Subfloors & boxing


Mark Royals Ph: 432 0107 Mob: 0274 433 130




Industrial - Residential - Commercial

www.breambayelectrical.co.nz
breambayelectrical@gmail.com
 027 35 33 555

Member **MASTER ELECTRICIANS**
 Electrical Contractors Association of NZ



Stainless and Aluminium Welding and Bespoke Fabrication




Gates and outdoor furniture. Marine repairs and fabrication.
 Onsite welding for farm repairs and modifications.
www.tcengineering.nz 021 145 7075 or 021 203 0309

Tractor Mulching

100hp tractor with high bodied yfials, mulcher, park finishing mowers, slashing Gorse & blackberry spraying



Also mechanical tractor repairs

Phone Bain McGregor
 0274 979 013
 or 09 432 0527

Grant McLean
 Stock Agent for Bream Bay

Ph mbl 021 7758 48 mbl, hm 432 1602
 Email: skincarla@xtra.co.nz

All aspects of stock sales including:
 • dairy beef • bobby calves • store cattle • live export heifers
 • sheep • pigs • supplying stock for slaughter

Also caters for small block holders.

Carrfields Livestock

Ruakaka Motors

Mechanical and Auto Electrical Repairs and Servicing



Monday - Friday 7.30am - 5pm
 Open Saturday morning 8am - 1pm.

Tyres and Batteries
 Warrant of Fitness testing
Phone 432 7233

PARADISE QUARRY

PARADISE QUARRY STONEMASONS

Specialists in stunning stone for landscape
 Suppliers & installers of northland's own schist for all your stonemasonry & landscaping Requirements

(09) 432 2722 or GEOFF (021) 972 139
www.paradisequarry.com



The Office Chick

Phone/Text: 027 235 3479
 Email: admin@theofficechick.net
www.theofficechick.net

Virtual assistant for all your administration, accounts and secretarial needs.

Mobile service - your office or ours.
 Pick up and delivery service available.
theofficechick

BLIND PRO

Blinds • Awnings • Shutters

Indoor blinds and outdoor screens

Call us today for a free, no obligation consultation and quote

ph 09 423 9661
 website www.blindpro.co.nz
 email info@blindpro.co.nz

McQUINN PUMPS

How's Business? ... It's Pumping!

24/7 SALES, SERVICE & INSTALLATION | PUMPS & WATER TREATMENT
 PHONE SUPPORT AVAILABLE

8000 627 846
 PHONE FREE

NOW AT 72 KIOREROA ROAD
 —ALONG FROM RD1 & ITM

Deadline for next issue - Wednesday 28 July

TRADES & SERVICE DIRECTORY Ph 09 432 0209



HANSEN
Drainage & Earthworks

DRAINAGE:
* Septic Systems * Water Tanks * Truck & Digger Hire *
* Subdivisions * Domestic * Commercial *
Certifying Drainlayers

Licensed Contractor for
Waste & Drainage Work



EARTHWORKS:
* Subdivisions *
* Farm Work: Effluent Pond Design & Build, Dams, Races *
* House Sites * Driveway Prep * Lawns * Roading *

P. 09 432-7877 M. 027-432-7877
E. karl@hansende.co.nz

Ash Worthy Small Block Mulching



NO JOB TOO SMALL!
027 313 4429



Brian the Painter
Decorator, Restorer, Handyman
Property Maintenance

No job too small,
No travelling time charges
Free advice



Phone 0274 882371 or 09 431 4882
Email: hollis@hotmail.co.nz

Local people read
THE BREAM BAY NEWS
It is an effective
place to advertise

LOW COST DRIVEWAYS & SURFACING NEEDS
Concrete or asphalt beyond your budget ...

We have the next best solution for a fraction of the price.

Call for a quote, you'll be pleased you did!
Paradise Quarry Contractors


Geoff (021) 972 139 or (09) 432 2722
For contractors who 'think' ...



**LONG RUN ROOFING & CLADDING,
RE ROOFING & SPOUTING,
EDGE PROTECTION**

Ph Terry 021 562 269
Email: wetaroofting@xtra.co.nz

RELIABLE & PROFESSIONAL SERVICE



Panelbeating and Spraypainting
Caravan and Motorhome Repairs
Tyres New and Secondhand
Punctures

470 Marsden Point Rd, Ruakaka
Call 09 4330313 24 Hrs or Bert 021 983 724

M.V.B. Electrical Ltd.
Working in Bream Bay since 1977

Repairs • Installations • Advice

Mike van Blommestein

Phone: 09 432 1015 • Mobile: 0274 783 749
Email: mikevanb@xtra.co.nz

NORTHLAND CLEANING SOLUTIONS
We have the solution for your needs



- Commercial/Domestic Cleaning
- Builders/Construction cleaning
- Carpet/Upholstery Cleaning
- Carpet Repairs/Laying
- Flood Restoration
- Property Maintenance Solutions & More.

Rochelle & Jason Brownlie
Mbl: 021 155 0319 Email: rochelle@ncsl.nz
Website www.northlandcleaningsolutions.nz

GRAEME BINT
FENCING

GOOD RATES, NO JOB TOO SMALL
09 432-1599 or
027-292-2833
grbint@xtra.co.nz

MANGAWHAI SMALL ENGINES
Grasshopper, Husqvarna and Honda dealer




194 Molesworth Drive, Mangawhai
Ph: 09 431 5270 or Mb: 021 655 481
Email: msengines@xtra.co.nz

**BLINDS
SHUTTERS
& CURTAINS
WHANGAREI**
Locally Owned and Operated

**Rollers, Venetians, Verticals,
Shutters, & Curtains**



Ask about our DISCOUNT for houseslots
Free in-home measure & quote
Free Installation

Phone Gail 0211 95 35 35
www.blindsandshutters.co.nz

**BREAM BAY
ACCOMMODATION**

RUAKAKA

STUDIO - HOLIDAY HOMES - B & B
BOOK ONLINE OR PHONE

Ph: 09 432 7025 Mob: 021 2722 739
website for online bookings: www.breambayaccommodation.com

**LAWSON
CARTAGE**

FOR ALL YOUR
EARTHWORKS & CARTAGE NEEDS
Suppliers of: topsoil, compost, woodchip,
bark, sand, pebble, rocks and firewood.

Ph/Fax 09 432 8418 or 021 768 940
458 Marsden Point Rd. PO Box 142, Ruakaka 0151
email: lawsoncartage@xtra.co.nz

GEOFF BLACK
REGISTERED TAX AGENT

For a free tax consultation contact Geoff 'Blackie' Black

027 953 3112
kiwigb247@yahoo.com

gp asbestos removal

Garry Smith
Mob 027 738 7888

Textured Ceilings
Asbestos Fibrolite
Asbestos Lagging

Ph 09 432 7305
Fax 09 432 7304
email: gpasbestos@xtra.co.nz
14 Bream Bay Drive,
Ruakaka, 0116

CAMPER PARKING WANTED

CAMPER PARKING WANTED

30km radius from Waipū
100% independent, waters, solar etc.
3 months ideal \$300
Marcus 022 580 2527

FOR SALE

WATER TANKS

09 431 2211
sales@absoluteconcrete.co.nz

Ply
19mm H3 2nds
Scooters Ply
Deliveries
4386565

WORMS FOR SALE
For worm farms
Phone 432 0209
or text 027 432 0070

RAWLEIGH'S PRODUCTS Independent dealer.
Phone Susan McRae 027 227 2291.

RUAKAKA A BRIEF HISTORY
Copies \$25 Available from Ruakaka Stationery & Gifts in the Ruakaka Towncentre
Ph: 432 8104 or from Sue Tisdall Ph. 4328112

CLASSIFIED ADVERTISING
Costs \$5 for up to 20 words and 20c for each additional word.
Boxed, classified adverts measuring approx 4cm sq adverts cost \$15 plus GST
Phone your advert through to 432 - 0209 email it to: breambaynews@xtra.co.nz
Post to: Bream Bay News, RD 2 Waipū 0582 or leave it with payment at *The Waipū Post Shop* or *the Ruakaka Gift and Lotto Shop*

VEHICLES WANTED

VEHICLES WANTED
Top cash paid For any VANS, UTES, TRUCKS, 4X4, Dead or Alive, damaged, de-registered Mechanical problem, no WOF we buy it. Call 0800 333 398

SERVICE OFFERED

ART HANDLER. Professional. 5 years experience at the NGV in Melbourne moving and installing all types of art from paintings to sculptures, any size, any weight, any age. Rory 021 139 2553.
eightythreephoto@me.com

NORTHLAND HEADSTONES
Located in One Tree Point
Your Local Headstone Showroom
Call 0800 707 800
www.northlandheadstones.co.nz

PHOTOGRAPHER AVAILABLE
Waipū
COMMERCIAL - REAL ESTATE
WEDDINGS - DOCUMENTARY
AERIAL - DRONES - EVENTS
Ph 021 139 2553
EIGHTYTHREEPHOTO.COM

LINKING HANDS
Health Shuttle
Phone
(09) 431 8969

Waipū Boarding Cattery
Excellent care and accommodation
Ph Sue 432 0394

Tree Removal
Cut it! Chip it! Grind it!
✓ Pruning
✓ Chipping
✓ Stump grinding
Qualified & Insured
Ph Scott (0800) 468-9663
Arborcare Tree Maintenance

GLENMOHR water care
WATER TANK CLEANING
No need to empty your tank
• Vacuum or full scrub
Phone Mark Draper 0274 707 607

LIBRARY HOURS

WAIPU COMMUNITY LIBRARY
Monday, Wednesday, Thursday, Friday & Saturday 10am - 1pm.
Tuesday 10am - 4pm.

RUAKAKA COMMUNITY LIBRARY
Takutai Place, Ruakaka 432 8406
Mon - Fri 9:30am-3:30pm
Sat 9am-1pm
JP Service available Saturdays 10am - 11am.

MARKETS

OTP Artisan Market
One Tree Point School (field and hall)
Fundraiser for Whangarei Hospital Children's Ward
Sunday 25 JULY
9 am to 1pm. Spaces available
call Sue 021 530 153 or 09 432 8112
Come and Support Local.

FOR LEASE

Office space available for rent!





Location:
9 Takutai Place, Ruakaka,
84 m² includes kitchen and toilet facility.

This building is available now, ready to move in.
Car parking also available.

For more info please contact Christine, Manager, Ruakaka Recreation Centre, phone: 09-4327962 or 027 2529612 or email: ruakakarec@xtra.co.nz

JUSTICES OF THE PEACE

Justices of the Peace

Ruakaka
Ms AP Paki 09 432 8262/021 149 1625
Darrell Trigg 09 432 7256/021 332 901
Ken Orr 09 432 8215
JM Archibald 021 227 4355
Wayne Buckland 09 432 8226 Ext 703
PH Goonan 021 824 825

One Tree Point
Jules Flight 09 432 8336/0274 777 210
Sir John Goulter 09 432 7868/021 612 442
MM Jolley 027 415 9486

Waipū
Trevor Vaile 09 432 0400
Mr. L.M. Hitchens 022 656 4055
Mr. D.A. Scott 09 929 9729/027229 9752
Ken Couper 027 292 0524

Make contact with a Justice of the Peace (on any day) and make an appointment to have your documents completed.
Only current Association members are listed.

THE NEXT PUBLICATION DATE
of the Bream Bay News will be Thursday 5 August
The deadline for all copy is 4pm on Wednesday 28 July

PUBLIC NOTICES

Notice of Annual Meeting

The Annual Meeting of beneficiaries is to be held at Sportsville Dargaville, Memorial Park, Logan St, Dargaville on **Wednesday, 28th July 2021, at 1:00pm**. A light lunch will be served at 12:15pm.

Agenda

- 1 Minutes of last year's Annual Meeting in July 2020
- 2 Matters Arising
- 3 Presentation of the Trust's Annual Report to Beneficiaries for the year ending 31 March 2021
- 4 Appointment of an Auditor for the 2021/2022 Financial Year
- 5 Report on Code of Practice
- 6 General Business

In accordance with S100 of the Electricity Industry Act 2010 the Consolidated Financial Statements of the Trust for the year ended 31 March 2021 and the Auditors Report on those financial statements are available for inspection, Monday to Friday, between 8.30am and 5pm at the office of the secretary (details below) and at www.northpower.com.

Plus Chartered Accountants

134 Bank Street
Whangarei
Phone 438 3322

In accordance with S102 of the Electricity Industry Act 2010
- s(2) every beneficiary has one vote
- s(3) The quorum for the annual meeting is 20 beneficiaries.

All persons in the Kaipara and Whangarei Districts who are connected to the Northpower electricity network are encouraged to attend.

Brent Martin
Secretariat



Bream Bay Medical Centre Ltd.
Ruakaka Town Centre, Ruakaka



Monday - Friday: 8.30am - 5pm
Saturdays: 9am - 12pm

Marsden Cove Medical Centre
1A Ngawaka Lane, One Tree Point

Monday - Friday: 8.30am - 5pm
Please advise at time of booking if you require an extended consultation.

Ph: 432 8060 Fax: 432 8230

PUBLIC MEETING WITH HONORABLE EMILY HENDERSEN MP for Whangarei
To hear what the Government is planning in transport solutions for our region.
Saturday 24th July 4pm at the Ruakaka Recreation Centre

AGM MenzShed Waipu Inc.
10am
Tuesday 10 August 2021
At the MenzShed Building
Waipu Heritage Precinct
41 Halifax Drive, Waipu
menzshedwaipu@gmail.com



AGM
Waipu Business & Community Incorporated

Will be held on
Tuesday 10th August 2021 at 5:30pm
@ Salt n' Pepper café
WAIPU GOLF CLUB

Special Guest Speaker
Peter Gibb
Hon Consul Nepal

Complimentary Nibbles Provided

For further information & apologies
Contact Graham Boulton
secretary@waipu.kiwi
(027) 397- 8934

BREAM BAY SUNDAY CHURCH SERVICES

Presbyterian Camellia Ave, Ruakaka: 8.45am. The Centre, Waipu: 10.15am. Prayer Service: 7pm

Encounter 223 Marsden Pt. Rd, Ruakaka, 10am.

Anglican 1st and 3rd Sundays - St Paul's Ruakaka 2nd and 4th Sundays - St Peter's Waipu. All services start at 9.30am.

Catholic Holy Family Church, Ruakaka, 10.30am. Mass or Liturgy of the Word

Lifepoint. 300 OTP Rd, 10.30am.

NEED HELP WITH THAT NEW DEVICE?

SeniorNet Bream Bay can help you with Apple and Android Desktops, Laptops, Phones, Tablets, Cameras Internet Banking, Gmail, Trademe and many more
The brochure for Term 3 can be found at the following outlets:
Hammer Hardware, Library - Waipu,
Westpac Bank - Ruakaka
Ruakaka Stationery & Gifts
with the timetable, courses and costs
Bookings essential, please contact:
Learning Centre: 09 432 7692
(please leave a message)
Or email - seniornetbb@gmail.com
Course venue: Learning Centre,
7 Kepa Road, Ruakaka

WAIPU RESIDENTS AND RATE PAYERS ASSOCIATION ANNUAL GENERAL MEETING

With guest speakers

- **Jon Pheloung** of Waka Kotahi - The NZ Transport Agency. On safety improvements planned for State Highway One between Whangarei and Wellsford
- **Calvin Thomas, General Manager of the Northland Transportation Alliance**, who will talk about: unsealed road maintenance, the recent speed limit review and various road safety concerns.

Wednesday 28 July at 7pm
in St Peters Waipu Anglican Church
Nova Scotia Drive, Waipu
All Welcome.



*Fundraising
Concert for the
National Summer Games
Hamilton 8-12 Dec, 2021*

Whangarei Special Olympics

Featuring:
Te Whanau,
Dave Ewart Jr &
Annette & Kim





Only \$15 per
Ticket!!!

**Sunday
August 22nd
1.30-4.30pm**

Limited to 250 Tickets—Don't Be Disappointed!!!

**TICKETS AVAILABLE AT THE KAMO CLUB -
7-11 MELDRUM ST, KAMO - PH 4351765**

Selling Bream Bay

Waipu Real Estate

NEW LISTING



COSY COTTAGE IN RUAKAKA.
\$445,000

- 1 bedroom cottage in a no exit street
- Quiet location close to the beach
- New carpet, vinyl and heat-pump
- Sunny and private on a cross-lease
- Mature fruit trees, handy garden shed
- Short walk to Ruakaka town centre

Mike Ferris 021 543 005 **WPU11342**



LIFESTYLE WITH A VIEW

Lot 1	2.0 ha	\$595,000
Lot 2	2.0 ha	(Under Contract)
Lot 3	2.91 ha	\$595,000

- 3 quality blocks in a popular location
- All in pasture - good building sites
- Lovely farmland and island views
- Blank canvas for easy development
- 10 minutes from Waipu village
- Titles expected late 2021

Roger King 0277 555 001 **WPU11331**




INTRODUCING CLIVE WEIR
After 20 years of running a successful manufacturing business my wife and I decided it was time to return home from Australia. Originally from the Waikato we chose Waipu to live as we prefer the warmer weather, the unsurpassed coastline, proximity to Whangarei and Auckland but most of all the wonderful community spirit of Waipu. Coming from a building background, I have always had a passion for Real Estate and since entering the industry I have thoroughly enjoyed helping to guide people through the whole process of selling their property and getting the results they want.

With my hard-working attitude, approachable & friendly personality, ethical standards, and determination to get results, look no further I'm the salesperson you are looking for.

Ph: 027 204 3334 Email: clive@waipurealestate.co.nz

The Centre, Waipu www.waipurealestate.co.nz 09 432 4000




BREM BAY REALTY

BREAM BAY REALTY LIMITED (LICENSED: REAA 2008)

Shop 11 | Town Centre | Ruakaka 0116 | NZ
PH: 09 433-0300 | bbrealty.co.nz
info@bbrealty.co.nz

Proud sponsors



COASTAL SECTIONS
LOT 3—530m2 \$436,000
LOT 4—566m2 \$445,000
With the development of these sections due this winter it is a great time to buy. Landbank for your future forever home by the sea. With services to the boundaries and covenants to protect your investment.
bbrealty.co.nz #4055 & #4056
JANINE GOLDSMITH AREINZ
Mob: 021 432 793 | Bus: 09 433 0300

HARBOURSIDE
This townhouse is one of two and quite unique to the area. Three bedrooms, two bathrooms with the living area spilling out to a private courtyard. Upstairs a roomy balcony provides a sunny hideaway with peeps of the harbour.
Price \$745,000 | bbrealty.co.nz #4051
JANINE GOLDSMITH AREINZ
Mob: 021 432 793 | Bus: 09 433 0300

SUNNY HOME CLOSE TO THE SURF!
It is all about position and this is an easy flat walk to the flags, dairy and popular Bach Café. Three bedroom, two bathroom home with very sunny extra lounge and nice flow out to patio area for summer BBQ's with family & friends.
Interest from \$850,000 | Set Date of Sale Closes 4pm 22nd July 21 (unless sold prior)
bbrealty.co.nz #4062
FRANCIE STOKES
Mob: 022 656 0165 | Bus: 09 433 0300

NEW BUILD—MARSDEN COVE
Well designed four bedroom (200m2) family home of brick and weatherboard situated on a level section of approx. 765m2 - all within an easy walk to Marsden Cove Marina. Double Glazing - Heatpump - Electronic Entry Keypad—10-year Master Builders Warranty.
Price \$1,150,000 | bbrealty.co.nz #4057
LYNN PARKER
Mob: 021 795 546 | Bus: 09 433 0300

ON PAR WITH ELEGANCE

- 3 Bedroom brick & plaster family home
- Upgraded kitchen & bathroom
- Heat pump & heat transfer system
- Bi-fold doors opening to private patio
- Low maintenance courtyard
- Walk to the Harbour

Offers over \$870,000
bbrealty.co.nz #4060
FIONA SOUTHERN MNZM
Mob: 021 317 775 | Bus: 09 433 0300

OPEN HOME—SUNDAY 12.00—12.45pm
98 Barbados Way, One Tree Point