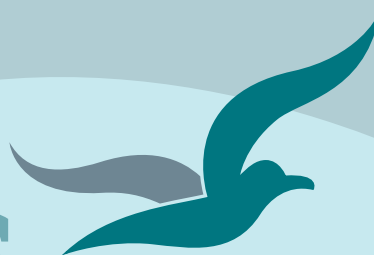


Bream Bay News



Est.1967 | Locally owned and operated | Delivered FREE twice a month 25 JANUARY 2024

Affordable Quality

- * SECURITY DOORS
- * INSECT SCREENS
- * SHOWER DOORS
- * BLINDS
- * AWNINGS
- * WARDROBE SYSTEMS

www.homeplus.co.nz



34 Albert St
Whangārei

Est. 1977

PH: 438 9452

whangarei@homeplus.co.nz

Beach access needed for everyone

Only fit people are able to scramble up the sand ladder installed to give access to the beach from the Mair Rd. Reserve

Department of Conservation staff have agreed to meet with members of the Ruakākā Residents and Ratepayers Association this week to discuss how public access to the beach at the end of Mair Rd. can be improved. The sand ladder installed at Mair Rd. just prior to Christmas as a replacement access down onto the beach is causing widespread concern amongst One Tree Point residents.

The ladder replaces the wooden steps, which were smashed in Cyclone Gabrielle back in February 2023. It consists of parallel lengths of heavy chain with half round posts bolted to them. At the top of the ladder where the gradient is not so steep sand has formed steps behind the half rounds but the dune then drops steeply to the beach and rather than accumulating it is eroding away leaving the ladder suspended.

Peter Hope and Jules Flight of the Ruakākā Residents and Ratepayers Association said the ladder is dangerous as people are likely to trip on the exposed timber. Department of Conservation specifications say that sand ladders are suitable for gradients from 17 to 30 degrees. After using an inclinometer Peter and Jules found the slope the sand ladder has been laid on top of is between 35 and 50 degrees.

Peter said that Mair Rd. is where One Tree Point people go to the beach and it needed to be suitable for everyone to use not just very fit people.

Continued on page 5

A busy weekend in One Tree Point



Face painter extraordinaire Fuss Nicolas elicits a smile from two-year-old Florence Smith when she shows her the beautiful butterfly design she has painted on her face at the One Tree Point Artisan Market held in the hall and fields of One Tree Point School on the third Sunday of each month.

There was lots happening in One Tree Point and at Marsden Cove over the last weekend 20 and 21 January. To begin with on Saturday the Marsden Lions held their giant annual book fair at One Tree Point Primary School. Then on Sunday 21 January there were two markets, the community artisan market and One Tree Point School and the big summertime market with rows of stalls on the grass at Marsden Cove. On Sunday afternoon the Marsden Boat and Yacht Club held a family picnic day with music, Thai food and games at its clubhouse on One Tree Point Rd.

More photos on page



Langs Beach 15 Blue Moon Rise

516 sqm 3 1 2 1 1

Asking Price \$1,195,000

Christine Birss 027 235 4323 christine.birss@bayleys.co.nz

MACKYS REAL ESTATE LTD, BAYLEYS, LICENSED UNDER THE REA ACT 2008

Motivated seller has bought. Great value here now

Beach bonus, from this easy lock n leave. Views of sea & islands, plus native bush too

3 large bedrooms. In fact the Master bedroom is so generous in size that the owner has had a large couch in 1 corner of the room, which makes a very comfortable spot to retreat to if you need some quiet time. Master bedroom has its own private deck too. There is a powder room (3rd toilet and basin) handy for lunch or dinner guests. This house was just built in 2020, so includes benefits like double-glazing. Current owner has looked after the house so well, that it really feels just like a new home.

Walk to the beach, as it's within easy reach for those who are fit. Take a closer look

bayleys.co.nz/1153445

BAYLEYS



**HAMMER
HARDWARE**
It's your local

For all your Household Needs, DIY and Gardening Supplies,
Fencing Equipment, Plumbing & Electrical Fittings.

Check out our Anniversary weekend deals

OPEN 7 DAYS Monday - Friday 8:00am - 5:00pm
Saturday 8:00am - 4:00pm | Sunday 9:00am - 3:00pm
Public Holidays 9:00am - 3:00pm

Waipu Hammer Hardware | 35 the Centre, Waipu | 09 432 0292

As seen on *Grand Designs* 2019



**COASTAL
CONSTRUCTION
PROJECTS**

0274 320 007

REGISTERED MASTER BUILDER QUALIFIED TRADESMAN CARPENTERS MARCUS@CCP.NZ WWW.CCP.CO.NZ

The Bream Bay News

is published by Bream Bay News Ltd. Address : RD 2, Waipu
Phone : (09) 432 0209 Mobile: 027 432 0070 Email : bream-
baynews@xtra.co.nz
Website: www.breambaynews.co.nz
Editor: Marilyn Cox . Accounts : Susan McRae. Technical assistance...
Geoff Spencer
Advertising design and website maintenance... Megan Lea.
Printed by NZME
We distribute 5900 copies twice a month in Ruakaka, One Tree Point,
Waipu, Mangawhai and Maungaturoto

EDITORIAL

Cold showers for lots of good reasons

I have been taking cold showers for the past few weeks. I read an article in the Listener which explained how cold showers can help slow down the aging process. If you subject your body to mild stress this can trigger recovery and repair mechanisms. I find there are additional advantages: I save on electricity, I gain a good ten minutes by not lingering too long under the shower head I feel cool and refreshed afterwards and I feel pleased with myself that I once again braved that first shock of cold water. I don't know if I can keep this up through the winter. I will see how that goes.

I believe to feel truly alive we need to continue to set ourselves small challenges and with the Bream Bay Sports Trust Have a Go Sports festival coming up (from 10 February to 10 March) there will be many opportunities to try something new. A good number of local sports club's are participating in this year's festival setting aside sessions when they will welcome newcomers to come and try their sport.

The Marsden Yacht and Boat Club is offering an opportunity to join the crew on a boat, the Bream Bay Cricket Club invites children to try this sport, the Waipu Croquet Club invites people of all ages to try their hand with a mallet, you can go on a three to four hour hike with the Bream Bay Tramping Club, learn the basics of power lifting with Dave Tompkins of BHP Fitness and primary age children can see if they enjoy the game of cricket at the Bream Bay College field behind the gym with Constable Dean Gillingham.

There are also opportunities to join the Cove Walking Crew, try pickle ball, bowls, and badminton and surf lifesaving.

This was the list as supplied to me last week. There have very likely been more entries since then. The full calendar of opportunities will be out soon.

I am about to head down to the One Tree Point Artisan Market at One Tree Point Primary School in the hope of finding a good subject for a front-page photograph. There is also a market this morning at the Marsden Cove Marina and later in the day a Family Picnic Day at the Marsden Yacht and Boat Club. Yesterday I went to the Marsden Lions big book fair, also at the school. There is a lot happening in One Tree Point this weekend.

The residential population of that part of Bream Bay is growing rapidly. I regularly get requests for additional copies of the paper from the people who deliver the BBNs in this area. I really think it important to sort out the beach access at Mair Rd. As Peter Hope of the Ruakākā Residents and Ratepayers said. "This is where the people of One Tree Point go to the beach."

Department of Conservation representatives have agreed to meet with Ruakākā Ratepayer members this week so I hope a more suitable solution can be sorted out. That sand ladder might be OK for the young and fit but is not doing the job for the general population.

I am wondering if there are people living in One Tree Point and Marsden Cove who might be interested in forming a group to look after the Mair Rd. beachside reserve. The Bream Bay Coastal Care Trust has funding from Foundation North to develop a weed control plan for the Department of Conservation coastal reserve land in Bream Bay and if there is interest in deloping to develop a plan to restore that area.

Marilyn

Building in Whangarei, Kaipara, Far North



Frankton 105sqm

\$330,750 incl gst

Includes: plans, consent, kitchen, appliances, tinted double glazed windows, tiles, carpet, blinds, heatpump.



Wayne Pickerill
Managing Director

"Hi, I'm Wayne Pickerill, Managing Director and Project Manager for your new Fowler Home. Enjoy quality and all the benefits of dealing with an efficient, low overhead, nationwide company, where I will take a personal interest and be involved through to completion."



More designs at www.fowlerhomes.co.nz or visit our office at 63 Walton St, Whangarei. Phone Wayne Pickerill 438 4840

**FOWLER
HOMES™**

Waipu gets organised in opposition to proposed BP service station and commercial development at Millbrook Rd/SH1 intersection

Eighty people crowded into the old school room in the Historic Precinct behind the Waipu Scottish Migration Museum last week – Wednesday 17 January 2024 to share information on the resource consent application by Vaco Investments Ltd Waipu Project to build a BP service station and shopping centre on the west side of State Highway One at the Millbrook Rd intersection to be known as the Waipu Gateway Service Centre.

The meeting was arranged by Richard Cole, who is Chairman of the Waipu Residents and Ratepayers Association.

Whangārei District Council (WDC) and Northland Regional Council (NRC) have jointly received an application from Vaco Investments (Waipu Project) Ltd for a Land Use and Subdivision Consent for a *Mixed Use Commercial* development on 5.92ha site at 47 Millbrook Rd. including: a service station, food and beverage outlets, food retail and light industrial and commercial activities. Antony Ivo Arnerich is sole director

of Vaco Investments Waipu Projects. A search on the New Zealand Companies Register reveals Mr. Arnerich has had involvement in a number of similar development projects in west Auckland. One of his companies, Vaco Investments Lincoln Rd. Ltd. was placed in liquidation in 2014.

Just about everyone who spoke at the meeting voiced their opposition to his Waipu proposal and suggested points that could be made in submissions opposing the applications.

The exception was one woman who said the development would provide 24/7 food outlets. She said at present there are no all hours fast food providers alongside



Drawing showing the proposed roundabout from state Highway One into the Waipu gateway Service Centre

State Highway One from Waipu to Whangārei.

Mr. Cole was concerned that the development, as described in the application, is “for the needs of the travelling public”, which means outlets supplying takeaway food and drinks likely to lead to people “discarding food cartons and disposable cups and bottles through their car windows as they drove north.”

He advised the meeting that commercial business concerns could not be recognized as legitimate reasons for declining the application under the Resource Management Act, so the issue that such a centre would likely detract from the commercial viability of business in the Waipu towncentre could not be raised in

submissions.

He said a valid point that can be made is that the development would be built on valuable productive farmland, which could be used more intensively in the future.

He said drawings of what the proposed development would look like, as shown in the application, are misleading. They have landscaped gardens but no-where in the architect’s impression is the big green sign that every BP Station displays.

Another key point is that an envisaged roundabout

Continued on page 7.



Custom built homes,
to suit your lifestyle



Visit Our Display Home
80 Arcus St, Raumanga, Whangarei
10:30am to 2:30pm Mon - Fri



0800 FAST BUILD | WWW.ADVANCEBUILD.CO.NZ

Unichem Orrs Pharmacy



Stay smart when out in the sun this summer

Living in New Zealand we are often bombarded with messages about the dangers of sun exposure. And rightly so. With our high rate of skin cancer (melanoma in particular) it is often hard to fathom why we go out into the sun at all – especially during the summer months as we get enough vitamin D by doing outdoor activities outside of peak Ultraviolet Index (UVI) times.



According to Sunsmart, over 300 New Zealanders die of skin cancer every year and it is by far the most common form of cancer in this country. Our unique environment means we are particularly vulnerable to ultraviolet rays which cause sunburn. All types of sunburn, whether serious or mild, can cause permanent and irreversible skin damage and can lay the groundwork for skin cancer in later life.

Sunburn occurs when living tissue, like your skin, is overexposed to ultraviolet radiation (UVR) causing it to change in colour from slightly pink to severely red or purple. Sunburn can appear from one to six hours after exposure and the skin feels hot to the touch. Severe sunburn may cause blistered skin and even a fever, nausea and dehydration. Your eyes may also be painful or irritated due to overexposure to UVR.

The best way to prevent sunburn is to use sun protection. It is particularly important to use sun protection from the start of September until the end of March, especially between 11am and 4pm. Sunscreen is one type of sun protection – ask your community pharmacist which sunscreen is best for you. You should also always wear protective clothing during this period, as well as a hat and sunglasses. In addition, try to keep in the shade whenever possible.

However, if you have the misfortune of getting sunburnt there are a number of ways you can help treat the condition:

- Use cold compresses on the burnt areas, for example a wet, cold towel.
- Ask your community pharmacist for topical treatments to manage the pain and heat, or a moisturising cream for dry skin.
- If blistering occurs, do not burst them as you may get an infection. Instead cover with a gauze or a bandage. If your blisters do burst, see your community pharmacist for treatment options such as antiseptic ointment or hydrocortisone cream.
- If you are in pain you can take aspirin, paracetamol or ibuprofen. Aspirin is not recommended for children. Ensure you follow the directions carefully.
- Avoid alcohol and drink plenty of water to help rehydrate your body.

If the sunburn is severe, your eyes are extremely painful, or you have blisters accompanied by a fever or nausea, see your community pharmacist or doctor immediately. And remember that there is no such thing as a “safe” tan – any change in the colour of the skin is a sign that damage has taken place.

**Phone the BREAM BAY NEWS - 09 432 0209
or email: breambaynews@xtra.co.nz
if you know of something interesting going on in
Bream Bay.**

LETTERS

A mantra for people who move to Bream Bay

I just wanted to tell you how much I enjoyed the latest edition of the Bream Bay News - thank you for the coverage of a wide variety of items. We were involved in the building of the Bream Bay College pool as we were on the staff of the College at the time. Our daughters all learned to swim in the pool! We were also part of the earliest edition of the Bream Bay News when it was being run-off on the school gestetner machine and folded by students. Wasn't it great to see sanity prevail with the holding of the Santa Parade at the same time in the same place in spite of the efforts to change both time and date? It is a great tradition as of course are the Caledonian Games. But the best bit was your final comment in the Editorial. With so many people moving from places where they could be residents and ratepayers but not community involved it needed to be said. I have a mantra based on five items - move to my town and you should 'join something, volunteer for something, shop locally (where possible), get to know your neighbours and when out walking say 'Hello' to people you pass'. I do find that people are moving into the area particularly retirees without really checking what they are going to get here i.e. there is no shopping mall.

*Clive and Jackie Craymer
Waipu*

No easy access onto the beach from Te Kamo St reserve

I refer to the article in Bream Bay News 21.12.2023 “Sand Ladder installed at Mair Road”.

Ms Abigail Monteith of DOC (whose email contact is not to be found) states that “there is comfortable access to the beach” at Te Kamo Street. By whose standards? I have looked hard, and looked again but nowhere that I can see is there comfortable access.

In recent weeks my nephew (young and fit) had to help a visiting gentleman up the last stretch of dune where he was just unable to crawl on his hands and knees. Comfortable? I think not.

Yes the beach is accessible to those fit enough to manipulate the egress up steep dunes. It requires a level of fitness and strength. It therefore denies access and more importantly egress to those outside that category.

The steps were my lifeline. I have managed with the aid of a crutch to get to the top of the dune entrance but am totally unable to go further. I am in my late 70s with walking difficulties. There are many of us living in the old power board village in that age category.

In the holiday season there are many who visit with young families. My husband has been required to help bring babies off the beach.

I live less than 150 metres from the beach but cannot use it. Driving 5 kms to Mair Road to use the new sand ladder holds no appeal. I know of 2 people who have injured themselves using it so far.

An east coast Mayor was on TV late last year saying that NZ beaches should be accessible to all. I agree, but this obviously does not apply to our local beaches if you are disabled. Discrimination? I think so.

Ms Monteith please reconsider your statement..

*Janet Woodward
Ruakāka Village*

Editor's note: Abigail Monteith is a Department of Conservation media contact person. The conclusion that there was already “comfortable access” onto the beach at Te Kamo St. was not made by her. She was just communicating what had been told to her by a Department of Conservation field officer who had inspected the site. I am grateful for Abigail's efforts to answer the various queries I send to her on behalf of Bream Bay people.

LETTERS TO THE EDITOR ARE VERY WELCOME

Email them to: breambaynews@xtra.co.nz

Drop them off at the Waipū or Ruakākā Lotto shops Or post them to: The Bream Bay News, 547 Mountfield Rd. , RD2 Waipu, Postcode 0582

The first cruise ship visit

The first cruise ship to visit Northport is due to arrive on Sunday 4 February. The MS Regatta: 181m in length, carrying up to 684 passengers will arrive at Marsden Point 3 Wharf at around 8am on Sunday 4 February and depart the same day at 8pm. A powhiri event with invited guests has been organised at Northport.

Passengers from the ship will visit the Waipu Scottish Migration Museum in two separate groups. As this is also the day of the big Waipu Car and Bike Show this promises to be a very busy day in Waipu.

Community meeting to discuss Kāinga Ora fifty new homes plan for Ruakākā Village

A meeting to discuss the proposed Kainga Ora (Housing NZ) development in the Ruakākā Village has been organised for 6.30pm on Tuesday 30 January upstairs at the Ruakākā Recreation Centre on

Kāinga Ora has plans to demolish 16 state houses in Peter Snell Rd, Tiki Place and Tamingi St. to be replaced by a more intensive development providing 50 new homes.

The meeting is organised by Tui Roman who has drawn up a petition in opposition to the development. The petition will be available for people to sign at the meeting.

Beach access needed for everyone

Continued from page 1.



Jules Flight, Chairman of the Ruakaka Residents and Ratepayers Association and Bream Bay News Editor Marilyn Cox contemplate how best to climb up the Mair Rd Reserve beach access sand ladder.

There are several other safety concerns at the reserve. The barrier blocking people from sliding down the dune where the old steps used to be is rather flimsy and bollards which prevented people driving to the edge of the cliff face have gone. The cliff is very unstable with big chunks of compacted sand frequently falling onto the beach below.

There is also concern over beach access from Te Kamo St. in the Ruakaka Village where a set of wooden stairs were also smashed in the cyclone. - see letter on page 4.

The Department of Conservation has opted not to install another access way here as it was considered the beach access there where the dune is not quite as steep was comfortable for most people. However, some disagree saying that there are many older people living in the Ruakaka Village who are now unable to get to the beach and that the access down over the dunes is also difficult for families with young children.

Proud Sponsor

Inspire | New Zealand
REAL ESTATE
Licensed Agent REAA2008

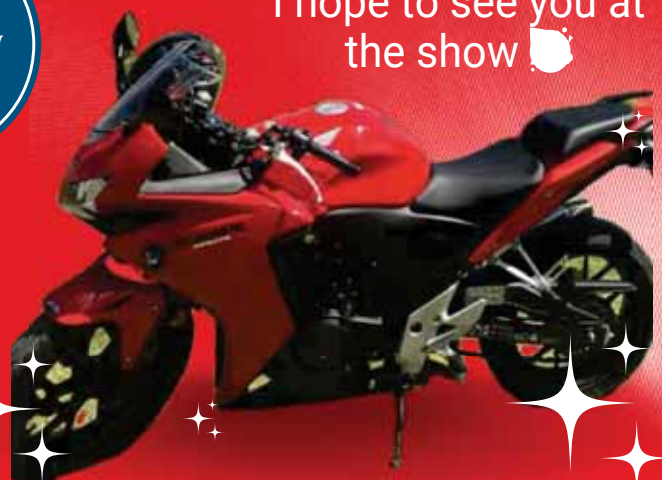
Waipu Car & Bike Show

4th
February
2024

Yep it's mine &
I hope to see you at
the show!



Carleen Still
Licensed Salesperson REAA 2008
M - (021) 1489804
E - carleen@inspireproperty.co.nz





Thinking concrete but don't know where to start?

Think Atlas Concrete

- We quarry the aggregate
- We manufacture the concrete
- We site visit to advise the best options
- We give you the choice of mix and colours
- We give a choice of local placers for you to choose
- We manufacture concrete to your requirements
- We stand by our product, you stand on it

Atlas Concrete

Your First Call for Concrete

**Ph: 0800 888303 - Brynderwyn
or 432 5030 - Ruakaka**



20ft Shipping Containers,
Hire offsite \$180 per month + GST + Delivery
Minimum 3 months,

SPECIAL

1st month free for a minimum 6 month hire

20ft Containers @ Kepa Rd, \$280/m

Enquiries Ph 0212722739 / 021432701

Email: storagebreambay@gmail.com
www.storagebreambay.co.nz



09 988 9049

whittakersfunerals.co.nz | admin@whittakersfunerals.co.nz
25 Kepa Road Ruakaka 0171 | PO Box 241 Ruakaka 0151

Eric Bettridge

"The kindest person I have ever met"

4 October 1931 - 10 January 2024

Eric Bettridge a long time resident of One Tree Point renowned for his volunteer work for the Child Cancer Foundation and for many local charities has died at the age of 92.

In 2012, when aged 80, Eric was awarded a Kiwibank Local Hero award in recognition for his work in organising the Daffodil Day and Child Cancer Foundation annual appeals in the Whangārei District and his fundraising and volunteer efforts in support of Camp Quality. His long time friend Richard Fisher said Eric was the "chief kite maker" at the camps, which aim to give children living with cancer a happy holiday. For many years Eric organised a big garage sale to raise funds to help run the camps.

Eric said after the death of his wife Bev 18 years

earlier he had decided to dedicate himself to volunteer work and recommended this as a way of coping with grief.

In 2007 Eric was given a Camp Quality Lifetime membership award for his outstanding service and in 2013 he was granted a Distinguished Service award by the Child Cancer Foundation.

In addition to national organisations supporting people with cancer, Eric carried out volunteer work for many local good causes

He was a long time member of the Marsden Lions. He helped to organise the Ruakākā Spring Fair and the Marsden Lions Christmas Parade, building a sleigh and reindeer for the parade at his own expense.

For many years he ran the Lions chip van, taking it home to clean after outings.

He built a seat for the Peter Snell Rd, playground, installed steps and a handrail at the Marama Place beach access and helped set the big anchor in front of Bream Bay College.

He won the prestigious Lions International Foundation Melvin Jones Fellow award for dedicated Humanitarian Services.

Eric put in many handyman hours at Yvonne Judge's Scavengers Recycling Shop. Richard remembers working with Eric to fit out the premises in Kepa



Eric Bettridge

Rd. when Scavengers moved there from the Ruakākā Towncentre. With his brother Ron, he ran a little native tree nursery selling the plants to fund his volunteer efforts as well as donating many trees to the Bream Bay Coastal Care Trust to plant in projects along the Bream Bay coastline. Richard remembers how Eric, being the younger of the two brothers would climb up trees to collect seed.

Jill Fisher said Eric was always helping people. If an elderly person in the community needed repairs to their home, work in their garden or furniture shifted Eric was there lending a hand.

For many years he looked after his sister Elsie taking her shopping each week when she was no longer able to drive.

"I don't know if he ever got time to sit down and relax. He was the kindest person I have ever met."

In 2014 Eric was honoured with the Ruakākā Citizen of the Year Award in recognition of the long list of volunteer services he had carried out for the Ruakākā community.

He is survived by his three children sons: Brian, Kelvin and daughter Rae as well as numerous grandchildren, great grandchildren and great, great grandchild.

Before he died Eric was aware that two more great, great grandchildren were about to be born.

Phone the BREAM BAY NEWS 027 432 0070

or email: breambaynews@xtra.co.nz

if you know of something interesting going on in Bream Bay.

Waipu gets organised in opposition to proposed BP service station and commercial development at Millbrook Rd/SH1 intersection

Continued from page 1.

shown on the application would be partly on the State Highway and partly on land that would form the development and would disrupt traffic on the highway. Mr. Cole asked if the taxpayer should be funding this extra roundabout built to facilitate a private development.

Nigel Taylor pointed out that if the planned roundabout at the Nova Scotia Rd. intersection was abandoned in favour of one at Millbrook Rd., it would have the effect of funneling traffic through Waipu township. He said two roundabouts in such a short length of highway would disrupt the flow of traffic.

Councillor Phil Halse said the proposed roundabout would form a dogleg on the highway, which was not desirable. He said the focus needed to be on securing an alternative more secure route over or around the Brynderwyn hill and continuing to ask for a continuation of the four lane motorway between Auckland and Whangārei.

The prospect of the Brynderwyn bypass meeting the highway north of the gateway development was raised with the example of the petrol station and commercial centre on the old SH1 route at Warkworth, which is now bypassed by the new section of motorway.

Craig Bucknell asked about the impact of the development the nearby Ahuroa River where the water supply for Waipu is sourced. However Mr. Taylor said the application showed drainage of treated storm water from the site would be to the east into the Waihoihoi River, "which is still a concern for water quality and the ecosystems there."

Shilane Shirkey said the Patuharakeke cultural report provided on the development, talked about the importance of inanga spawning grounds in Waipu rivers and how these needed to be safeguarded.

A concern was raised about the safety of children cycling across the highway get takeaways with the suggestion that the community ask for an over-bridge or tunnel under the highway to be built at the developer's expense to mitigate this risk.

Retired nurse Liz Perales was concerned about the effect the new takeaway shops would have on people's health.

To a suggestion that our Bream Bay Ward Councillors should oppose the application, Councillor Ken Couper explained that the application would be heard by a panel of commissioners who would make a recommendation to the Whangārei District Council, which could then either accept or decline the application.

He said however, "It is a brave Councillor who would go against the recommendation of a hearing panel."

He advised people to "follow the process" and to make submissions listing their concerns.

Councillor Couper pointed out that the application by Bruce and Coralie Roberts to change the zoning behind the Ranburn retirement complex, which many people in Waipu had supported, was an application to change the zoning from productive farmland to commercial.

He said, "There have to be rules but also the ability to question those rules."

The new truck stop currently being built on Port Marsden Highway, just off State Highway One had also come about after a successful application to rezone Productive Farmland for commercial use.

A spokesperson for this development by Wolf 2008 Ltd. with directors Barry Trass and Brian Eunson, said

there is already sufficient land zoned for commercial use in Bream Bay to allow for needed development

He told the meeting the Port Marsden Highway project was a truck stop development which would provide sleeper cabins, a restaurant and refueling service for truck drivers to help ensure they did not exceed their permitted 13 hours of driving in a 24 hour period.

There are currently four new fuel stop proposals along the section of State Highway One between Millbrook Rd. and the Ruakākā Roundabout.

Close to the Wolf 2008 development Simon and Nancy Tan seek to establish a fuel stop and food outlets on

the east side of SH1 with an off ramp from the highway into the development and there is an application for an unmanned fuel station at the Mountfield Rd., State Highway One intersection opposite the Department of Conservation's Uretiti Campground.

Submissions on the Vaco Investments Waipu Gateway Service Centre applications need to be received by the Whangārei District Council on or before Monday 5 February 2024.

Mr. Cole advised people to send theirs in a few days early to make sure they arrived on time.

ANNIVERSARY WEEKEND



WAIPU
Street
Market

SUNDAY 28 JANUARY 2024
9AM - 2PM

FRESH FOOD | FREE ENTRY
CRAFTS | CLOTHING | HOMEWARES

OVER 180 STALLS

 **MAIN STREET | CELTIC BARN** 
CALEDONIAN PARK 

THE HUGE MARKET IN THE LITTLE TOWN.

Brought to you by 
Business and Community Inc. "We're loving it!"
markets@promotewaipu.co.nz



**BREAM BAY
STORAGE**

INSIDE/OUTSIDE storage at 50 Cove Rd., Waipu

Free phone. 0800 432 135
enquiry@breambaystorage.co.nz

www.breambaystorage.co.nz




99 MARSDEN PT ROAD, RUAKAKA
92 Units from 6 x 3 to 1 x 1
Each unit individually alarmed and monitored
Electrified security fence

Ph. 0508 273 262 or 0275 310 788

CLEAN - DRY - SECURE

LIBRARY HOURS



**Monday, Wednesday,
Thursday, Friday &
Saturday 10am - 1pm.
Tuesday 10am - 4pm.
Phone 432 0375**



RUAKAKA COMMUNITY LIBRARY
Takutai Place, Ruakaka
432 8408
Mon - Fri 9:30am-3:30pm
Sat 9am-1pm

JP Service available
Saturdays 10am - 11am.



**HAVENING
TECHNIQUES®**
CERTIFIED PRACTITIONER

Havening Techniques® are an evidence-based psychosensory healing method to help you overcome the consequences of traumatic and stressful events, including, phobias, fears, burnout, chronic pain, whilst building resilience and wellbeing.

As a nurse and midwife for over 44 years, I'm skilled at working with health and childbirth traumas/ fears.

Appointments are either in-person in Waipu or online.

Contact me for further information.

Professor Susan Crowther PhD
Tel: 022 310 1978
E: drsusan.crowther@gmail.com

Bream Bay Sports awards postponed but all go for month long Have a Go Sports Festival

Judy Boulton, chair of the Bream Bay Sports Trust, is disappointed to announce the postponement of the Bream Bay Sports Awards on March 15th, 2024.

She said "Unfortunately, due to the limited number of nominations received to date, the Trust has decided that it is preferable in the interim to change the awards to a bi-annual event. Nominations for 2023 / 2024 will be combined as a award evening in March 2025. Nominations already received for 2023 will be included. The trust realises that the last two years have been extremely difficult for many sports clubs. Some competitions have been slow to resume after covid and this has impacted on clubs and consequently nominations to the Sports awards.

The trust will also consider changing the format of the awards to better serve our sports community.

Prime concentration for the Bream Bay Sports Trust now is its four-week long Have a Go Sports Festival. Twenty groups covering a wide diversity of local sports clubs has signed up to participate in this year's Give Sport a Go festival which will run from Saturday 10 February to Sunday 10 March with participating clubs nominating time slots to invite people

along to try out their sport. Some of the sports on offer this year are: croquet, football, surf lifesaving, power lifting, netball, pickle ball, bowling, sailing, fishing, badminton, tramping, swimming and cricket. The Have a Go Sports Festival aims to offer sporting opportunities to people of all ages and to encourage Bream Bay people to take part and enjoy some of the many sporting opportunities on offer here either as a participant or as a volunteer.

Calendars with all the events are being prepared and will be distributed to every household in Bream Bay as well as printed in the Bream Bay News 8 February edition and heavily promoted on both social media and local radio.

Participating clubs receive grants of \$250 to help with the running of their open days once they have reported back to the Bream Bay Sports Trust on how their event went. Many clubs said they had gained new members from last year's festival.

Judy said, "This is the communities opportunity to support Bream Bay Sports clubs."

Council to review bylaw controlling alcohol in public places

The Whangārei District Council is inviting stakeholder comment on its Alcohol Control bylaw review.

The bylaw controls alcohol consumption in public places such as parks, beaches, schools and carparks but does not control licensed premises like bars and restaurants.

Currently there are 14 alcohol ban areas in the Whangārei District as well as a ban on drinking on all public beaches (all public places 300 metres landward from mean high water spring) Additional alcohol ban areas in Bream Bay are Waipu town and Marsden Village. The full list of alcohol ban areas in the district can be viewed on the Whangārei District Council website: www.wdc.govt.nz/AlcoholBan

The Alcohol Control Bylaw controls alcohol in public places and is not concerned with the sale of alcohol, the number of licensed premises and the hours alcohol is for sale which are regulated under the Sale and Supply of Alcohol Act of 2012.

An alcohol ban is enforced by Police who can search people and vehicles in ban areas.

By the end of February the Council hopes to have concluded its "early engagement" so that in April a draft bylaw is ready for public consultation in April. People will be invited to say whether or not they support the current bans and to make the case for any new areas they think a ban should be placed over. Evidence is needed that drinking in that location leads to a high level of crime and disorder.

Statutory consultation on the draft will occur in May and the new bylaw is expected to be adopted in July 2024.



**ADVANCED
EARTHWORKS**
we create your future

**We Specialise in Civil and Siteworks in
the Whangārei-Ruakaka-Waipu-Kaipara Areas**
P: 021 198 8288 E: arne@advancedearthworks.co.nz

Despite a couple of rain events it has been “way better than last year” for campers holidaying at Bream Bay’s three campgrounds



Uretiti campground was still busy last week

Bream Bay’s three campgrounds have been busy and expect this to continue at until after Anniversary weekend providing the weather co-operates.

The Ruakaka Beach holiday park the largest of our camps with 380 camp sites and nine cabins is the largest of our campgrounds. Manager Ann Maree Able reports that the camp was at capacity from 28 December to 7 January and has been around half full since then.

“We have had a couple of wet days but mostly there has been sunshine and its been nice and busy.”

The Ruakaka fire Brigade has visited to show off its fire trucks and fundraise with a raffle and there have been several fun day outs with a bouncy castle and a water slide.

Ann Maree is hoping for fine weather over Anniversary Weekend to keep the campers coming.

The Uretiti Camp has been busy since the 26 December. Camp manager Steve Farrow said in that first week the weather was a bit wild with a heavy rainstorm on 30 January when 92mls fell in a 45 minutes period which didn’t help our camping families. But everybody seemed to hang in there. The mostly sunny weather since has meant the camp has been busy.

Last week it was still three quarters full. Lakes, which formed after all the rain last summer have still not completely dried up and the camp has lost around 20% of its capacity. The maximum number of campers it can cater for has been reduced from 1,000 people to 750. Steve said so far things have gone well with just

one incident after an elderly man tripped over the guy rope on his tent and damaged his shoulder, when an ambulance needed to be called.

The 246 camp sites and 16 cabins at Camp Waipu cove have all been occupied since a couple of days after Christmas. Even on Christmas day there were 500 people staying there which is something new.

“Its good to see people choosing to come a bit earlier to spend their Christmas at the beach”, Anton said.

Anton commented that there don’t seem to be so many international travelers arriving with out booking and looking for somewhere to park their campervans this summer. Certainly there are nowhere near as many of these tourists as there were pre Covid 19.

“We have had a couple of rain events which is not ideal but its way way better than last year.

Anton said the new car parking and road design at the Cove seems to be working well and the public domain alongside the camp is packed.

He is wondering if the closure of State Highway One for repairs which is due to take place from 26 February until 27 March, opening for six days over the Easter period and closing again on 3 April until the repair work is completed. The work is expected to take nine weeks in total, so likely another five weeks until early May. People can still drive to Northland using the Mangawhai Cove Rd route but many may not want to drive over this unfamiliar route.

**BREAM BAY
CURTAINS
BLINDS
AND SHUTTERS**

PH 0204 632 432
FOR A FREE IN HOME
CONSULTATION
CALL SUE

AVAILABLE 7 DAYS A WEEK COVERING
WHANGAREI TO MANGAWHAI INCL KAIWAKA
BBCURTAINSANDBLINDS@GMAIL.COM

CALL SUE TODAY
0204 632 432

BIG RED

TRUCKING

Owner /Operator Duncan Mackay

GENERAL CARGO SERVICE
Metal / Topsoil / Sand / Manure / Hay / Silage

.....

WATER
Prompt Delivery And Reliable Service.
Healthboard Approved Drinking Water Carrier.

Call 021 070 8211

Bream Bay Garden Maintenance

Landscaping • Planting • Raised Beds
Decks • Hedges trimmed • Trees pruned
Weed control • Section Tidy Up
• Simple Building jobs •

Free Quotes

NO JOB TOO SMALL

One Offs, Weekly, Fortnightly or Monthly

Phone Marcus 021 343 727

Keeping clothing and shoes out of the landfill at the Waipu Op Shop

The Waipu Anglican Op Shop is having an extremely busy January. Volunteer Sally Haigh said a troupe of valiant volunteers are working hard in the heat to serve customers and keep the shop in order.

“We have a wonderful amount of quality summer to stock to move so are continuing our “All clothing and shoes Half Price Sale!” for the next couple of weeks. Sally said, “With the recent TV article re the popularity of “OP Shop Shopping” it is now a “thing” - people are pouring through the doors all over the country snapping up real bargains, and keeping their budgets in check, and helping to prolong the life of many articles, and keeping them out of the landfills. Win-Win.”

Pictured Sally Haigh sorting through some of the Op Shop current stock helped by Jo Cotterill who calls in now and then to lend a hand.



WAIPU TENNIS CLUB

Our 2024 season has started on Tuesday evenings at 6pm. Tuesdays is a good night to come along if you are keen to join up and take part in the final part of the summer season and play into winter. Most people are a bit rusty after a break! The social nights will start in February as will the Sawmill competition on Thursday nights. The Sawmill competition is open to everyone so get a team of four together and your entry to Sean or Steve.

A couple of weeks before Christmas all three interclub teams recorded wins on the same night. Most teams have a couple of wet weather catch up games to play but standings at the Christmas break are: In the A grade Waipu Gold in 4th position and Waipu Silver 7th. In the B grade Waipu Bronze are 4th.

Our One Set Wonder doubles tournament is on 17 February with a 10am start. The tournament is graded into A and B grades and there are around \$800 in prizes on the day for winners, runners up and lucky draws. The tournament is open to everyone. Text your entries to Paul (0274416542) by 14 February.

The Kaitia Open tournament was held in early January and it was good to see Ben Donaldson and Wendy Jambor win the combines competition up there. Wendy and her partner (Dominique Zivkovich-Brady) were runners up in the women's doubles as well.

It is never too late to come along to tennis as we are always looking for people to fill in when someone is away or injured.

Remember to check our Facebook page for what is going on at the club.

A colourful but very smelly fungus

Spotted last week growing in the bark mulch in a garden plot outside the Ruakākā library was this deep red, star shaped, stinkhorn fungus.

These fungi pop out of the ground in egg like shapes and then split open with a number of striking red arms. But stinkhorn fungi produce a foul smelling mucus full of spores at the base of their arms. Flies and other insects are attracted to the awful smell, which resembles rotting meat. They feed on the mucus and then spread fungi spores far and wide.

Stinkhorns tend to form on wood chips, leaf litter, decayed stumps, and in soil.

There are a number of species of stinkhorn fungi, which vary in shape and



The stinkhorn fungus growing in the Council garden plot outside the Ruakākā Library and Council Service Centre is doing a good job of attracting flies to its putrid smell

size. This one appears to be the Australian anemone stinkhorn with the botanical name *Aseroe Ruber* : (*Asēroe* - in Ancient Greek disgusting juice and *ruber* a Latin word for red.)

Stinkhorns are not poisonous, but neither are they

particularly edible. Their terrible smell would deter most people from tasting them.

Deadline for next issue - Wednesday 31 January



Police Report

Drowning at Ruakākā Beach

A man drowned at Ruakaka beach on Thursday morning 18 January. At 11.35am Surf lifeguards responded to a report of someone in need of rescue outside the flagged area. A rescue boat was sent to retrieve the man who was unconscious they were pulled from the water. When they reached the shore lifeguards attempted to resuscitate him. They carried out CPR and then applied a defibrillator. Police, the Fire Brigade and St John Ambulance also responded to the emergency but the person could not be resuscitated.

Trailer topples on roundabout

A truck trailer toppled over landing on its right side on the Ruakākā Roundabout on State Highway One on Friday 12 January. There were no injuries.

Due in court to face drink driving charge

A 20-year-old Whangārei man has been summoned to appear in court charged with driving with excess breath alcohol.

Fatal accident on Paparoa – Oakleigh Rd

A 58-year-old man died after his station wagon crashed into a tree on the Paparoa- Oakleigh Rd on Wednesday 10 January. A Taipuha farmer called emergency services just after 3pm when he heard a loud crash. On investigating he found the man with serious injuries trapped in his car. Firefighters extracted the man from his vehicle and he was flown to Whangārei hospital with critical injuries but was dead on arrival.

Six family harm incidents

In the fortnight to Saturday 20 January Bream Bay Police attended six family harm incidents: three in Waipu, two in Ruakākā and one in Maungaturoto. In all six cases Police attendance was sufficient to calm the situation.

Two mental health related callouts

In the same fortnight they attended two mental health incidents: in in Waipu and one in Ruakākā. In both cases the individual involved has been referred to mental health services.

Information sought on black motorbike speeding around Waipu

Police have received multiple reports of a black motorcycle speeding in the Waipu area recently. The bike is described as an all-black motorcycle, no or hidden registration plate, and an exhaust under the seat. It is possibly a Kawasaki Ninja or Triumph Daytona. Please forward any information about this bike (including CCTV footage) to the Waipu Police.

Minor crashes

There have been a number of minor vehicle crashes

- On 8 January a single vehicle crash on Marsden Point Rd.
- On 11 January a single vehicle crash on Port Marsden Highway
- On 12 January a single vehicle crash on State Highway One on the Brynderwyn Hill.
- On 15 January a single vehicle crash on State Highway 12 near Maungaturoto
- On 10 January a nose to tail accident at Maungaturoto

In all these incidents there were no serious injuries.

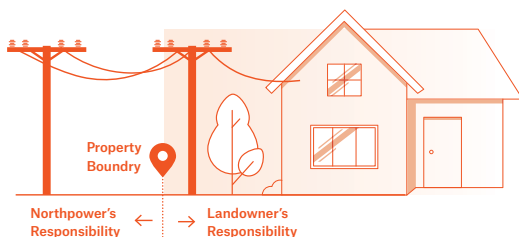


Safe Service Lines

The power line that runs from the road to your house is called a service line. It can be overhead or underground. To keep you and your whānau safe, regularly check your service line and poles. If you have any questions or concerns, call Northpower or your electrician to assess the line and plan any repairs to prevent possible danger.

Who is responsible for the service line?

Property owners are responsible for the powerlines, poles and underground cables that supply electricity from Northpower's network to their property. In most cases the service line starts at the property boundary.



Trees near your service line

It is important property owners keep trees away from their service line. If your trees aren't regularly maintained and grow too close to service lines, this can be a hazard. Give us a call and we can help arrange a free disconnection to stay safe while you're trimming or cutting your trees.

Unsafe service lines

While we regularly carry out safety inspections on Northpower's network, property owners are responsible for their own service lines. You should regularly check service lines and poles on your property.

If you have concerns phone Northpower on **0800 66 78 46**.

LOOK OUT FOR...



Damaged or sagging lines



Rotten wood on crossarms or poles



Trees near power lines



Damaged or worn service lines at the point it enters your house

Let's stay safe together!

Learn more about staying safe around our network at northpower.com/staysafetogether

Northpower



STAY SAFE TOGETHER

northpower.com

A busy weekend in One Tree Point



Sue Stevens selling sun hat from her stall at the One Tree Point Artisan Market at One Tree Point School with market organiser Sue Tisdale

There were two markets one, the long standing third Sunday of the month Artisan Market run by Sue Tisdale at the One Tree Point School hall and grounds with proceeds going to purchase care packs for children in Whangārei Hospital

For children there were pony rides, face painting and the school playground.

The second was a big market with many rows of stalls on a grassed mowed area at Marsden Cove alongside the marina.

The Marsden Cove Market is a summer time affair running until April.

It is organised by Mike Hines, who also organises the Mangawhai Tavern Market. He has contact with close to 400 market vendors many of whom have welcomed another sales venue.

Last Sunday the Marsden Cove market was extremely busy with crowds of shoppers, the smell of Thai food drifting on the air and a stall selling kites lending a colourful festive air.

The next date for this market is Sunday 25 February from 9.30am to 2pm.

The One Tree Point Artisan Market returns on Sunday 18 February from 9am to 1pm.

In the meantime for market lovers there are two due to be held in Waipu.

On Sunday 28 January, Anniversary Weekend from 9am to 2pm with over 180 stalls booked for the Waipu Caledonian Park, the Celtic Barn and the Centre, Waipu.

Then on Sunday 11 February in the Waipu Coronation Hall is the monthly Waipu Boutique Market from 9am to 1pm.



A big crowd and rows of stalls at the the Marsden Cove Market



**The next issue of the Bream Bay News will be published on Thursday 8 February
Deadline for advertising is Wednesday 31 January**

The Marsden Lions Book Fair

While they had a busy day selling books and puzzles on Friday 19 January and sales continued to be steady on Saturday 20th, there are still many books remaining at the annual Marsden Lions book fair held in the One Tree Point School Hall.

These will all go into a container made available to the Lions by Marsden Maritime Holdings to be brought out again at next year's sale.

The sale receives widespread support from the Bream Bay business community with One Tree Point School providing the venue, Marsden Cove Pharmacy, Marsden Cove Four Square, Ruakaka General Store, Z 24 Hour Fitness and Waipu Hammer Hardware acting as drop off points for books and puzzles, Positive Systems providing an eftpos machine free of charge and Storage Bream Bay lending a trailer to transport the books to and from the school hall.

The Marsden Lions has four more big events coming up throughout 2024.

Next is the Pukapuka Party on Saturday 16 March at Bream Bay College with free fun activities for local children. Then there is the annual Marsden Lions Charitable Golf Tournament, the organisation of the World Festival of Magic show at Forum North and Junior Citizenship Awards held towards the end of the year.

The Marsden Lions have taken over the administration for the Whangārei Magic show where children who would not usually get to see a live performance are given free tickets to attend.



Marsden Lions Members at the book fair held in the One Tree Point Primary School hall on Friday 19 and Saturday 20 January: from left Maree Gutry, Margaret Marinkovich, Liz Hedley and Gladys Rowsell. In the background Wendy Rowsell and Barb Lock peruse the books on offer.

Gladys said by the time they had set out the books in the hall on Thursday and sold books over two days they had all spent a total of 20 hours on their feet - and that's a lot for people of our age. We need more younger people to join our ranks." For information on joining the Marsden Lions phone Maree Gutry - 027 322 6385 or Craig Nisbet - 027 573 2495, The book fair raised \$3,300.

Marsden Yacht and Boat Club New Year picnic



The Marsden Yacht and Boat Club held an afternoon picnic for members and their guests.

On Sunday afternoon 21 January, from 1pm the Marsden Yacht and Boat Club held a family picnic day for members and guests to start the new club year. It was attended by over 60 people of all ages.

With a full tide children had a great time swimming off the One Tree Point boat ramp.

.Dave Ewart provided live music from the clubhouse deck. Zab Dee Thai food and Mr. Whippys icecream truck were on site and the club bar was open to members and guests.

**Tahamoana Angora
Goat Farm**
Presents

“Sirrah”



Live Music

566 Cove Road Waipu
Saturday 27th January
7:00 pm \$25

Ruakaka Stationery & Gifts

Ruakaka Town Centre

Shop local for all your needs:
Stationery, Books, Toys, Magazines
Greeting Cards, Clothing,
Gifts & Souvenirs



**Phone
432 8104**

New Zealand Post

Open Saturday until 7pm.



Waipu

Volunteers needed for our Waipu shop
Throughout the week and on weekends

Donated goods welcome
Phone 432 1342 for pickups.

Four times around the Waipu Golf Course in three hours and 19 minutes



Speed golfer Craig Russell running around the Waipu to raise funds for the Cancer Society

MARSDEN POINT HIGH TIDES

	AM		PM	
Thu 25 Jan	8.21	2.5	8.35	2.4
Fri 26 Jan	9.06	2.6	9.20	2.4
Sat 27 Jan	9.47	2.5	10.02	2.4
Sun 28 Jan	10.25	2.6	10.40	2.4
Mon 29 Jan	11.02	2.6	11.18	2.4
Tue 30 Jan	11.37	2.5	11.55	2.4
Wed 31 Jan	~	~	12.13	2.5
Thu 1 Feb	12.33	2.4	12.50	2.5
Fri 2 Feb	1.14	2.3	1.29	2.4
Sat 3 Feb	1.59	2.3	2.12	2.4
Sun 4 Feb	2.48	2.3	3.00	2.3
Mon 5 Feb	3.45	2.2	3.53	2.3
Tue 6 Feb	4.47	2.3	4.53	2.3
Wed 7 Feb	5.50	2.4	5.57	2.4
Thu 8 Feb	6.50	2.5	7.01	2.4
Fri 9 Feb	7.46	2.6	8.01	2.6

Craig Russell set a record that might take some time to better at the Waipu Golf Course on Friday 5 January. He completed four rounds of golf (72 holes) in 3 hours and 19 minutes.

Craig was taking part in the Cancer Society's Longest Day of Golf fundraiser, an annual event where golfers raise funds for the Cancer Society while completing four rounds of golf in a single day.

Craig is a speed golfer and he set himself the challenge of completing the four rounds in under three and a half hours.

So as not to have too much impact on other golfers he began at 5.40am.

"It was still a bit dark to begin with which made things a little difficult", he said.

He completed the four rounds just before 9am and in the process raised \$1,600 for the Cancer Society. People can still donate on the website: longestday.org.nz/t/72-holes-speed

For the first two rounds he carried four golf clubs and for the last two, just a 6 iron. His score was 81 for the first round (partially in the dark), 77 (5 over par for

the second, 79 for the third and 88 for the final round when he was beginning to feel a bit fatigued. He ran a total of 29 kilometres. He was accompanied by a team of supporters who helped with water supplies and encouragement.

Craig said speed golf is a "really good fun way to get fit."

A small group of speed golfers meet for a twilight round at the Waipu Club at 7pm each Tuesday evening. Craig also regularly puts in some early morning sessions at Whangarei's Sherwood course getting in an 18 hole round before 8am.

And something to look forward to - the North Island Speed Golf Open Championship will once again be played at the Waipu Golf Course on Saturday 23 March from 3.30pm with speed golf world champion Jaime Reid in attendance. Craig said the Waipu Golf Course is well suited for spectators who can look over the field from the club house. There will be music, food and beverages, so he encourages people to come and watch.



- ❖ Chemical and non-chemical house washing
- ❖ Window and house cleaning
- ❖ Painting and staining - exterior house, decking and fences
- ❖ Water blasting - decks, driveways and courtyards
- ❖ Clean guttering and downpipes
- ❖ Pest control and spider spraying
- ❖ Tree trimming with extension saw

Phone now for a FREE QUOTE

REVITALISE ❖ PRESERVE ❖ PROLONG ❖ MAINTAIN

TONY 021 196 2949 OR MELISA 021 075 6770

With You every step of the way

CENTURY 21 Jean Johnson Realty

Sales and Property Management
Dargaville, Whangarei, Bream Bay
W dargaville.century21.co.nz P 09 439 7575

WHAT'S ON IN BREAM BAY

- **LIVE MUSIC - AUCKLAND BASED DUO SIRRAH** at Tahamoana Angora Goat Farm, 566 Cove Rd., Waipu. Saturday 27 January at 7pm. Tickets \$28.92 from eventfinda or \$35 at the gate.
- **WAIPU STREET AND PARK MARKET** Sunday January 28th, 9am - 2pm. Over 180 stalls
- **THE WAIPU CAR AND BIKE SHOW** Saturday 4 February. 500 to 600 cars and around 100 motorbikes on display. Gates open at 10am. Prize giving at 1.30pm. Entry is \$10 per person. Children under 12 years of age get in for free and there is a family pass of \$30. Organised by the Waipu Lions with proceeds from this year's show going to the Northland Rescue Helicopter
- **JAZZ ON A SUMMERS DAY** on Sunday 4 February at 3pm followed by 'Albi and the Wolves' at Tahamoana Angora Goat Farm, 566 Cove Rd. Ticket from Eventfinda \$39.80 or at the gate.
- **BREAM BAY SPORTS TRUST GIVE IT A GO FESTIVAL** From Saturday 10 February to Sunday 10 March. Calendar of events will be published soon with local sports clubs inviting people to try a new sport.
- **WAIPU BOUTIQUE SUNDAY MARKET** Next on Sunday 11 February From 9am to 1pm in the Coronation Hall
- **ONE TREE POINT ARTISAN MARKET** Next on Sunday 18 February 9am - 1pm. One Tree Point School quadrant and field. Fundraising for Whangarei Hospital Children's Ward.
- **ABBA HEAVEN** New Zealand Abba tribute band at the Marsden Yacht and Boat Club on February 24 at 2pm. Tickets \$35 included finger food. Cash bar. Phone 027235 9623 to book or email peter@bassbass.co.nz
- **MARSDEN COVE MARKET** Next on Sunday 25 February 9.30 - 2pm at the Marsden Cove Marina
- **WAIPU MUSEUM** 36, The Centre, Waipu. Open seven days 10am-4pm.
- **THE KAURI MUSEUM**. The Kauri Museum is open 9am-5pm every day except Christmas Day. 5 Church St., Matakohē. See more at www.kaurimuseum.com

BREAM BAY



EVERY THURSDAY



MORNING

9.00am	Departs	Kaiwaka Kaiwaka Hall
9.15am	Departs	Mangawhai Village Village Shops Bus Stop (by restrooms)
9.20am	Departs	Mangawhai Heads I-Site
9.35am	Departs	Lings Beach Corner of Wairahi and Cove Roads
9.40am	Departs	Waipu Cove Beach Car park
9.50am	Departs	Waipu Monument Bus stop
10.10am	Departs	Ruakākā Peter Snell Road (opposite Takutai Place)
10.50am	Arrives	Whangārei Rose Street Bus Terminus

*For travel within Whangārei see CityLink Whangārei timetable www.citylinkwhangarei.co.nz or get your timetable from the Rose Street office.

AFTERNOON

3.00pm	Departs	Whangārei Rose Street Bus Terminus
3.40pm	Departs	Ruakākā Peter Snell Road (opposite Takutai Place)
4.00pm	Departs	Waipu Monument Bus stop
4.10pm	Departs	Waipu Cove Beach Car park
4.15pm	Departs	Lings Beach Corner of Wairahi and Cove Roads
4.30pm	Departs	Mangawhai Heads I-Site
4.35pm	Departs	Mangawhai Village Village Shops Bus Stop (by restrooms)
4.50pm	Arrives	Kaiwaka Kaiwaka Hall



OPERATED BY
LEABOURN
Ph: 0800 994 404
E: office@leabourn.co.nz

FARES	One Way	Return
Kaiwaka	\$7.00	\$10.00
Mangawhai	\$7.00	\$10.00
Mangawhai Heads	\$7.00	\$10.00
Lings Beach	\$7.00	\$10.00
Waipu Cove	\$6.00	\$8.00
Waipu	\$6.00	\$8.00
Ruakākā	\$5.00	\$7.00

ROUTE DESCRIPTION

Kaiwaka/Mangawhai Road, Molesworth Road, Mangawhai Heads Road, Cove Road, The Centre Waipu, Nova Scotia Drive, SH1, Marsden Point Road, Peter Snell Road, Marsden Point Road, SH15A, SH1, Otaka Road, Maunu Road, Walton Street, Rose Street Bus Terminal.

If you would like to be picked up elsewhere along the route, please phone Leabourn's to arrange this on the Wednesday before you want to travel.

CONTRACTED TO
Northland REGIONAL COUNCIL
For service updates visit:

www.buslink.co.nz
Feedback to buslink@nrc.govt.nz



WAIPU LOTTO & POST



Lotto
Postshop
Photocopying

Emailing
Newsagents
All stationery needs



The Centre, Waipu

Phone 432 0900

TRADES & SERVICE DIRECTORY Ph 09 432 0209

LAWSON CARTAGE

FOR ALL YOUR
EARTHWORKS & CARTAGE NEEDS

Suppliers of: topsoil, compost, woodchip,
bark, sand, pebble, rocks and firewood.

Ph/Fax 09 432 8418 or 021 768 940

458 Marsden Point Rd. PO Box 142, Ruakaka 0151
email: lawsoncartage@xtra.co.nz

BREAM BAY ACCOMMODATION

RUAKAKA

STUDIO - HOLIDAY HOMES - B & B
BOOK ONLINE OR PHONE

Ph: 09 432 7025 Mob: 021 2722 739

website for online bookings: www.breambayaccommodation.com



SMALL BLOCK MULCHING

Phone COLIN (Joe) 0274916983

Bream Bay Tax

Tax
Accounting
Business support

Free first consult.
Fixed price packages
Supporting Bream Bay businesses

Robb MacKinlay 027 540 7859
robb@breambaytax.nz www.breambaytax.nz



BARFOOT THOMPSON

I Love Selling Bream Bay!

Angelique Hartnett
Coastal & Lifestyle Sales / AREINZ
0274 356 411 / 09 435 5914 P
a.hartnett@barfoot.co.nz E

This Space Now available

\$42.80 gst inclusive
or for regular customers
(six or more insertions)
\$38.50 gst inclusive

TRADES & SERVICE DIRECTORY

Ph 09 432 0209

NORM FAGO
OWNER / OPERATOR

Act Now
Car Rentals

M: 0274 362 480
Nz Freephone: 0800 362 480
E: info@actnowrentals.co.nz

From \$45 per day - Min 4 days
Based in Ruakākā

Ph: 09 432 0123

BREAM BAY GLASS

FOR ALL YOUR GLASS NEEDS



Mob: 0274954548

AMC
AUTO MOBILE GLASS

FAST WINDSCREEN REPLACEMENTS & CHIP REPAIRS

- Mobile service or come to our workshop
- Ultra competitive pricing. • Insurance claims welcome.
- Windscreen replacement in under an hour.

Phone Conrad on 022 036 2916
2/17 Gumdigger place.

BRADLEY
EARTHWORKS

• POND CLEANING • DRIVEWAYS • RACEWAYS
• LAND CLEARING • TREE REMOVAL • ROADING AND MORE!

CALL ME TODAY FOR ALL YOUR EARTH & TREE WORKS
PHONE ROY 027 374 5090 WAIPU

ABSOLUTE CONCRETE

www.absoluteconcrete.co.nz
CULVERT PIPES
Spun and reinforced
Crane truck delivery
Drainage Merchant - Hardware Store
Email: sales@absoluteconcrete.co.nz
Phone (09) 431 2211
KAIWAKA

MACSWAY
SCAFFOLDING LTD

WE BUILD, HIRE, ALLOY MOBILES, TEMPORARY FENCING, & SHRINKWRAP

Ph: 09 432 7643 • 0274 726 772
macsway@xtra.co.nz Kapa Road, Ruakaka

O'MALLEY CONTRACTING LTD | CONCRETE SPECIALISTS

- FOUNDATIONS
- HOUSE SLABS | STAIRS
- RETAINING WALLS
- DRIVEWAYS | CARPARKS
- EXPOSED AGGREGATE
- COLOURED CONCRETE
- COMMERCIAL | RESIDENTIAL
- LICENCED BUILDING PRACTITIONER

Free No Obligation Quote

FAMILY OWNED & OPERATED

021 2200 198 | OMALLEYCONTRACTING.COM

Bream Bay Concrete Ltd.

Free Quotes • Reliable Service • Quality workmanship

- Concrete pads
- Shed floors
- Pathways
- Home floors
- Driveways
- Concrete cutting
- Excavation works
- Retaining walls
- Paving fences
- Profiles for homes & sheds
- Subfloors & boxing

Mark Royals Ph: 432 0107 Mob: 0274 433 130

BREAM BAY ELECTRICAL

Wiring Safe Homes And Businesses Throughout Northland

RESIDENTIAL COMMERCIAL INDUSTRIAL

0800 223 555 • 027 35 33 555
www.breambayelectrical.co.nz

24H SERVICE



BAYSIDE CONTRACTORS

RESIDENTIAL EARTHWORKS • HOUSE SITES
DRIVEWAYS • TRENCHING & DRILLING

Contact Shane
027 3019 480
admin@baysidecontractors.co.nz

TC ENGINEERING
Metalwork Specialists

Stainless and Aluminium Welding and Bespoke Fabrication

Gates and outdoor furniture. Marine repairs and fabrication.
Onsite welding for farm repairs and modifications.
www.tcengineering.nz 021 145 7075 or 021 203 0309

Tractor Mulching

100hp tractor with high bodied yllails, mulcher, park finishing mowers, slashing
Gorse & blackberry spraying

Also mechanical tractor repairs

Phone Bain McGregor
0274 979 013
or 09 432 0527



Grant McLean
Stock Agent for Bream Bay

Ph 021 7758 48
Email: skincarla@xtra.co.nz

All aspects of stock sales including:
• dairy beef • bobby calves • store cattle • live export heifers
• sheep • pigs • supplying stock for slaughter

Also caters for small block holders.

Carrfields Livestock

Ruakaka Motors

Mechanical and Auto Electrical Repairs and Servicing

Monday - Friday 7.30am - 5pm
Tyres and Batteries
WOF testing Gold Card discount
Drop off, pick up service available in Waipu
Phone 432 7233

PARADISE QUARRY

PARADISE QUARRY STONEMASONS

Specialists in stunning stone for landscape
Suppliers & installers of northland's own schist for all your stonemasonry & landscaping Requirements

(09) 432 2722 or GEOFF (021) 972 139
www.paradisequarry.com

SUSAN JACOBS PAINTING
INTERIOR • EXTERIOR
027 370 5339

BLIND PRO

Blinds • Awnings • Shutters

Indoor blinds and outdoor screens

Call us today for a free, no obligation consultation and quote

ph 09 423 9661
website www.blindpro.co.nz
email info@blindpro.co.nz

McQUINN PUMPS

How's Business? ... It's Pumping!

24/7 SALES, SERVICE & INSTALLATION | PUMPS & WATER TREATMENT
PHONE SUPPORT AVAILABLE

0800 627 846
PHONE FREE

NOW AT 72 KIOREROA ROAD
—ALONG FROM RD1 & ITM

Deadline for next issue - Wednesday 31 January

TRADES & SERVICE DIRECTORY

Ph 09 432 0209



DRAINAGE:

* Septic Systems * Water Tanks * Truck & Digger Hire *
* Subdivisions * Domestic * Commercial *
Certifying Drainlayers

Licensed Contractor for
Waste & Drainage Work



EARTHWORKS:

* Subdivisions *
* Farm Work: Effluent Pond Design & Build, Dams, Races *
* House Sites * Driveway Prep * Lawns * Roading *

P. 09 432-7877 M. 027-432-7877
E. karl@hansende.co.nz

Team James Alexander

JAMES ALEXANDER
021 878 178
SALESPERSON & AUCTIONEER

ASHLEIGH LOUISE
027 733 5703
SALES ASSOCIATE

Licensed Salesperson: The Real Estate Shop Limited Licensed (REAA 2008)

Diggermate
OPERATING AND HIRE

CALL GEORGE
027 214 5501

GREEN TEAM
A FORCE OF NATURE

Small Building Jobs & Repairs

- Letterboxes • Curtains • Smoke alarms,
- Clothesline • Decks • Fences,
- Kitchen and bathroom repairs
- Rental property maintenance

Call Tony on 021 196 2949

Local people read
THE BREAM BAY NEWS
It is an effective
place to advertise

Long Run Roofing & Cladding
Re-roofing & Spouting
Edge Protection

Terry Mounsey
021 562 269
wetaroofing@xtra.co.nz

**RELIABLE &
PROFESSIONAL SERVICE**

**STORAGE
BREAM BAY**
76 Waiwarawara Dr, Ruakaka 0171

Karen Loft
Business Manager
Mob: 021 432 701

Office Hours 9.00 - 1.00
email: storagebreambay@gmail.com
www.storagebreambay.co.nz

LOW COST DRIVEWAYS & SURFACING NEEDS

Concrete or asphalt beyond your budget ...

We have the next best solution for a
fraction of the price.

Call for a quote, you'll be pleased you did!
Paradise Quarry Contractors

Geoff (021) 972 139 or (09) 432 2722
For contractors who 'think' ...

Hydroseeding
Spray On
Lush Lawns

For a free consultaion & quote, call or email
George 021 688 949
Info@gogreenteam.co.nz

**MPP
MARSDEN
PANEL & PAINT**

Panelbeating and Spraypainting
Caravan and Motorhome Repairs
Tyres New and Secondhand
Punctures

470 Marsden Point Rd, Ruakaka
Call 09 4330313 24 Hrs or Bert 021 983 724

M.V.B. Electrical Ltd.

Working in Bream Bay since 1977

Repairs • Installations • Advice

Mike van Blommestein

Phone: 09 432 1015 • Mobile: 0274 783 749
Email: mikevanb@xtra.co.nz

**BLINDS
SHUTTERS
& CURTAINS**
Bream Bay Whangarei & Districts

**Rollers, Venetians, Verticals
Shutters, Curtains & Outdoor Blinds**

Ask about our DISCOUNT for houseslots
Free in-home measure & quote
Free Installation

Phone Gail 0211 95 35 35

www.blindsandshutters.co.nz

**GRAEME BINT
FENCING**

GOOD RATES, NO JOB TOO SMALL
09 432-1599 or
027-292-2833
grbint@xtra.co.nz

MANGAWHAI SMALL ENGINES

Grasshopper, Husqvarna and Honda dealer



194 Molesworth Drive, Mangawhai
Ph: 09 431 5270 or Mb: 021 655 481
Email: msengines@xtra.co.nz

BREAM BAY HYDRAULICS

Bream Bay's first local
hydraulic hose service



021 308 358 breambayengineering@gmail.com

BREAM BAY NEWS PHONE 09 432 0209

Email: breambaynews@xtra.co.nz

Post copy to : Bream Bay News, RD 2, Waipu
Email: breambaynews@xtra.co.nz
or leave it at the Waipu or Ruakaka Post and Lotto Shops

SAORSA UNIT FOR SALE

SAORSA UNIT: 2 bdrim , brick and tile, close to vil-
lage.\$430,000 , very neg. 0220790721

FOR SALE**WATER
TANKS**

09 431 2211
sales@absolute
concrete.co.nz

**RAWLEIGH'S PROD-
UCTS** Independent
dealer. Ointments back
in stock. Phone Susan
McRae 027 227 2291.

**WORMS
FOR SALE**
For worm farms
Phone 432 0209
or text 027 432 0070

Scooters Plywood
3mtr Scaffold Planks \$77
12mm H3.2 NS
Plywood \$79.00
Ph 438 6565

WILTSHIRE SHEEP
Ideal lifestyle block sheep
Self Shedding
Ph 027 432 1016

SUMMER FIREWOOD SPECIAL:

Pine 85 per m3, Gum 125 per m3.
Delivery available Ph 027 55 88 151

FOR HIRE**SHIPPING CONTAINERS**

20ft Shipping Containers, hire offsite \$180 per
month + GST + Del, minimum 3 months,
Ph 0212722739 / 021432701

WANTED

OLD NEWSPAPER Copies of the Bream Bay News,
Advocate, Herald, Leader, Weekend Lifestyler, or Man-
gawahai Focus for recycling as erosion control. Waipu
Lions fundraiser. Phone Dave Bell 09 432 0861.

VEHICLES WANTED. Top cash paid For any
VANS, UTES, TRUCKS, 4X4, Dead or Alive, dam-
aged, de-registered Mechanical problem, no WOF we
buy it. Call 0800 333 398

SITUATIONS VACANT

**WANTED - A PERSON TO LOOK AFTER AND
MAINTAIN A COLLECTION OF CLASSIC
VEHICLES** Old school mechanical knowledge
needed. Flexible working hours. Full or part time.
Please contact Dave 021 947 710.

THE NEXT PUBLICATION DATE

of the Bream Bay News will be Thursday 8 February
The deadline for all copy is 4pm on
Wednesday 31 January

SERVICES OFFERED**NORTHLAND
HEADSTONES**

Located in One Tree Point
Your Local Headstone Showroom
Call 0800 707 800
www.northlandheadstones.co.nz



Tree Removal
✓ Pruning
✓ Chipping
✓ Stump grinding
Qualified & Insured
Ph Scott (0800) 468-9663
Arborcare
Tree Maintenance

**PHOTOGRAPHER
AVAILABLE.** Waipu,
Commercial, real estate,
weddings, documentary,
aerial, drones, events. Ph:
021 139 2553.
EIGHTYTREETHPHO-
TO.COM

**Waipu
Boarding
Cattery**

Excellent care and
accommodation
Ph Sue 432 0394



**GLENMOOR
water care**
WATER TANK CLEANING
No need to empty
your tank
• Vacuum or full scrub
Phone Mark Draper
0274 707 607

**JD LAWN CARE SERVICES
PH. 021 063 7907**

Lawn mowing, Weed spraying,
Water blasting, surface cleaning of
driveways, paths and patios, Hedge
trimming, Section clearing, tree
pruning, wood chipping and more.

SOCIAL SERVICES

**LINKING HANDS
Health Shuttle**
Phone (09) 431 8969

**BREAM BAY ANGLICAN
FOODBANK**

If you would like assistance
or know someone that does,
perhaps we can help
Please phone Janet 433 0045

**Not sure? Ask us!**

We provide free, confidential and
independent information and advice to
help you understand your rights and
responsibilities.

Contact us for assistance.
09 438 8046 • whangarei@cab.org.nz

www.cab.org.nz

SOCIAL SERVICES**Safeman Safe family
Men's Centre**

Safeman Safefamily offers a safe place for men
to talk privately without judgement and with com-
plete confidentiality.
We are peer led and professionally supported and
offer a range of services and support for men and
their families.

The services we provide are as follows:

- Advocacy Navigator
- Court support
- FGC Support
- Probation Community Service Provider
- Legal Advice
- Marriage Celebrant
- House and property blessing
- One to one counselling
- Drug and Alcohol support
- Anger management group sessions
- Supervisor for court ordered access
- Work brokers/ help with employment opportunities.

No appointments are necessary, we have an open
door policeu - if you need help or know someone
that does just come on down to: **9 Takutai Place,
Ruakākā.** We are right next door to Jimmy's Bar-
ber Shop or I can be reached by phone
021 121 0763 - Phil Paikea

**Bream Bay Community
Support Trust**

Takutai Place, Ruakaka Phone: 09 432 7197

Services we provide:

- Registered Social Workers
- Family Support Workers
- Youth Workers
- Youth Hangout Space (watch this space...)
- Community Connectors
(Connecting community to various services)
- Free Whanau Ora Medical Clinic with Ki A Ora
Ngatiwai. Wednesday mornings 10am-12noon, by
appointment only phone 09 435 4586
- Free Budgeting Service – Tuesdays 10am-12pm
by appointment
- Mana Wahine Ki Wahine Toa, women's group
- Ha Tane – men's group
- Listening Ear – need to talk? Mon-Fri 9am-4pm
no appointments necessary, cuppa and a listening
ear available

Waitata Sessions 12:30pm every Wednesday, in
our hall, come along for a sing along. . Last Session
for 2023 Wednesday 20th December

Community Connections 10:30am-12pm every
Friday in our hall. Hot soup and cuppa available.
The purpose of these sessions is for the community
to get together and partake in different activities to-
gether, getting to know one another, sharing talents/
hobbies/passions creating connections in the com-
munity, building friendships. The session topics are
driven by interests of participants.

Friday 26 Jan -Cuppa and chat with Whittakers Fu-
neral Home

Friday 2 Feb - Guest speaker Nature vs Nurture.

Follow us on social media - Facebook and
Instagram for updates on what is happening here
during the week.

www.bbtrust.org.nz

BUSINESS FOR SALE**THE BREAM BAY NEWS
IS FOR SALE**

Is there anybody out there interested in taking over the running of this great little community newspaper?

I have owned and run this business for the past eighteen years and it is time to pass it on to someone who will take it to the next level

There are excellent growth opportunities

I have found running the Bream Bay News very rewarding as the Bream Bay Community is very appreciative of the service the paper provides.

I would be happy to spend several months teaching a new operator how our newspaper production works.

Will sell at a good price to the right person.

Phone or text Marilyn - 027432 0070

Or email: breambaynews@xtra.co.nz

PUBLIC NOTICES

Bream Bay Medical Centre Ltd.

Ruakākā Town Centre, Ruakākā

Monday - Friday: 8.45 am - 5pm

Saturdays: 9am - 12pm

**Marsden Cove Medical Centre
1A Ngawaka Lane, One Tree Point**

Monday - Friday: 8.45am - 5pm

Please advise at time of booking
if you require an extended consultation

Ph: 432 8060

New patients welcome

**PUBLIC NOTICES****Justices of the Peace****Ruakākā**

Paea Paki 09 432 8262/021 149 1625

Darrell Trigg 09 432 7256/021 332 901

Ken Orr 09 432 8215

Wayne Buckland 022 644 5376.

One Tree Point

Jules Flight 0274 777 210

Sir John Goulter 021 612 442

MM Jolley 027 415 9486

Ian Bogue 0274 300 418

Grant Brown 027 248 7126

Waipu

Trevor Vaile 021335 075

Doug Scott 027 229 9752

Ken Couper 027 292 0524

Angela Stolwerk 021 823 966

Chris Martin 027 367 2947

Make contact with a Justice of the Peace
(on any day) and make an appointment to have
your documents completed.

A service desk also operates 10am to 11am on
Saturdays in the Ruakākā Library.

**SAORSA RETIREMENT VILLAGE**

is currently opening its waiting list for
available pensioner rental units.

If you would like to go on the waiting list for a
rental unit please contact the office on
09 4321453 or email saorsavillage@xtra.co.nz
for an application form.

All applicants will need to be 65yrs and over.

RUAKAKA RESERVE BOARD

AGM/Public Meeting
EVERYONE IS WELCOME
Sunday 28th January 2024
10am at our camp hall



21 Ruakaka Beach Rd., Ruakaka

**BREAM BAY SUNDAY
CHURCH SERVICES**

Presbyterian Camellia Ave, Ruakaka:
8.45am. The Centre, Waipu: 10.15am.
Prayer Service: 7pm

Encounter 223 Marsden Pt. Rd,
Ruakaka, 10am.

Anglican - All services at ST PAUL's
Church, 25 Karawai St, Ruakaka 9.30am
until further notice.

Catholic Holy Family Church,
Ruakaka, 10.30am. Mass or Liturgy of
the Word

Lifepoint. 300 OTP Rd, 10.30am.

MARKETS**WAIPU STREET AND PARK MARKET**

Sunday January 28th 9am - 2pm

The huge Summer market in the little town
Over 180 stalls something for everyone



**NEED OUR HELP WITH THAT
NEW DEVICE
YOU GOT FOR XMAS?**

Don't be shy in seeking our help
Training designed for those over 50!
On all devices.

Come to our Open Day

Discuss your needs with our friendly tutors

When: **Wednesday 31st January 2024**
10am - 12noon

Where: 7 Kapa Road, Ruakaka

SENIORNET BREM BAY
Phone enquires - 4327 692 (leave a message).

BREAM BAY 60's UP

WHERE: Ruakaka Recreation Centre
9 Takutai Place

WHEN: the 4th Friday of the month
At 10:00am for games, indoor bowls etc.

Speaker or Entertainer at 1:30 pm

Monthly bus trips.

New Members Welcome

EMAIL - breambay60sup@gmail.com

Or phone Secretary 021 491 887

**KW SINGERS ARE STARTING
REHEARSALS**

on Tuesdays at 1.15pm at Ranburn Care Home.
New members welcome. Limited to 25 members.



**Local people read
THE BREM BAY NEWS**

It is an effective place to advertise



Harcourts Waipu

429 Glenmohr Road, Waipu WAI2625
Auction Onsite – Sunday 4th February at 2pm (unless sold prior)
 Roger King 0277 555 001

Perfectly situated on a 7010m2 parcel of land, this enchanting property offers a harmonious blend of space, privacy and natural beauty. The rural outlook and sea views are absolutely breath-taking. The 232m2, 3-bedroom, 2-bathroom residence is surrounded by tropical and mature planting. Large garden areas and patio are perfect for family gatherings and entertaining. Situated on the tar-seal, only a 7-minute drive from Waipu.





38 St Marys Road, Waipu WAI2626
Deadline Sale – Closes Wednesday 14th February at 4pm (unless sold prior)
 Judy Guy 027 221 5623

First time on the market for 42 years. Situated on a generous 2223 m2 section, this haven holds the potential for subdivision. The character 140m2 bungalow with 3 spacious bedrooms is enclosed by mature trees, a veggie garden, chook run, a sleepout and 2 x studios. As an added bonus, a fully operational cattery is run on the property: opportunity to continue the business if you wish!





Harcourts Waipu | 7 The Centre, Waipu | 09 430 1000
 Waipu Real Estate Ltd Licensed Agent REAA 2008



Latest Listings


Ultimate living at Langs Beach

20 Anderson Place, Langs Beach —
 nzsothebysrealty.com/NLA00401
 DEADLINE: Closes 4:00 p.m. Wednesday 21 February 2024 (unless sold prior)



- Seamlessly combines casual sophistication with contemporary living.
- Ground level features a drive-through carport, double garage, and landscaped gardens, setting the stage for coastal living.
- Upper floors showcase four bedrooms, a family bathroom all with ocean views, and a top-floor kitchen/living space with a panoramic deck for entertaining.

2 Blue Moon Rise, Langs Beach —
 nzsothebysrealty.com/NLA00373
 Offers over \$1,870,000 considered



- Luxurious Langs Beach residence, 231 sq m, thoughtfully designed for enduring comfort.
- North East-facing with wrap-around decks, panoramic views, stylish interiors, and four bedrooms.
- Tinted double glazing frames sweeping ocean views, creating a modern luxury atmosphere.

Our Reach Brings the World To Your Home

For Extraordinary Results

Sandy McKenzie
 M: +64 21 431 541
 sandy.mckenzie@nzsir.com

Yana Bell
 M: +64 21 0807 9342
 yana.bell@nzsir.com

Each Office Is Independently Owned and Operated. NZSIR North Limited (licensed under the REAA 2008) MREINZ.



BREAM BAY REALTY

BREAM BAY REALTY LIMITED (LICENSED: REAA 2008)

Shop 11 | Town Centre | Ruakaka 0116 | NZ
 PH: 09 433-0300 | bbrealty.co.nz
 info@bbrealty.co.nz

Proud sponsors




COASTAL CLASSIC
 A classic 1970's home that has had quite the makeover. Exterior paint and roof rejuvenation. Upgrade to kitchen, laundry and bathroom. Sunny, open plan living area with deck access. Large, elevated corner section. Beach access just across the road.
 Price \$895,000 | bbrealty.co.nz #4173
JANINE GOLDSMITH AREINZ
 Mob: 021 432 793



LOCATION & OPPORTUNITY
 This home is awaiting your creative touch. 3-bedrooms + study, 2-bathrooms, open plan living & dining area. Step out onto the spacious back yard & add some gardens if you choose. Situated on a flat section and within walking distance to the Harbour, café and day care.
 Price \$879,000 | bbrealty.co.nz #4174
FIONA SOUTHERN MNZM
 Mob: 021 317 775



COOL COASTAL SOPHISTICATION
 • Dual living/Home & Income
 • 1285 sq mtr section with sea views
 • 4 bedrooms, 3 baths, 3 living areas
 • Subdivision potential with Council Consent
 • Copious amount of vehicle parking
 EOI Over \$1.4M | bbrealty.co.nz #4137
JOANNE DEWSON AREINZ
 Mob: 021 780 622



ON PAR WITH EXCELLENCE
 • Built locally by Cogan Custom Homes
 • 225m2, 4 bedrooms, 2 bathrooms
 • Open plan kitchen/dining with scullery
 • 768m2 section overlooking golf course
 • Extra large garage and workshop
 By Negotiation | bbrealty.co.nz #4142
FIONA SOUTHERN MNZM
 Mob: 021 317 775



LITTLE MISS SUNSHINE
 Ideal first home or lock up & leave Beach. With open plan living, kitchen & dining, family & friends can spill out onto the covered deck and pull down the blinds for privacy and wind factor if necessary. Walk to the shops and beach.
 Price \$695,000 | bbrealty.co.nz #4165
JANINE GOLDSMITH AREINZ
 Mob: 021 432 793



CENTRAL 10 ACRE BLOCK
 A rare find in a sought-after location. Sandy, black peat soil and currently maintained by way of maize planting and stock grazing, this land is a flat rectangular shape. Wide road frontage and exposure on One Tree Point Road lends itself to lifestyle possibilities. bbrealty.co.nz #4163
 Price Now \$699,000 + GST (if any)
FRANCIE STOKES
 Mob: 022 656 0165