

# New Bream Bay News

Established 1967. Delivered FREE twice monthly

Phone 432 0209. email [breambaynews@xtra.co.nz](mailto:breambaynews@xtra.co.nz)  
 Mobile 027432 0070 Postal address - RD 2, Waipu 0582  
 Website: [www.breambaynews.co.nz](http://www.breambaynews.co.nz) LOCALLY OWNED AND OPERATED

28 April 2022

## Affordable Quality

- \* SECURITY DOORS
  - \* INSECT SCREENS
  - \* SHOWER DOORS
  - \* BLINDS
  - \* AWNINGS
  - \* WARDROBE SYSTEMS
- Regular Bream Bay Service



PH: 438 9452  
 34 Albert St Whangarei  
 Div. Shadelite Industry

## Ruakākā Energy Park “The beginning of the next generation electricity grid”

Meridian Energy purchased 105 hectares of industrial land at Marsden Point last December to build a solar farm and as a location for a large grid connected Battery Energy Storage System – BESS.

The Meridian Energy land is bounded by Rama Rd., Port Marsden Highway and the Caltex diesel truck stop.

Rheilli Uluilata, External Communications Advisor for Meridian Energy Limited said, the company is in the “very early stages of scoping the design for the site.”

She said, “The design and investigation process will determine the placement of the solar farm and battery. Asked if the project would provide employment for local people she said, “We’re engaging local consultants and contractors to help us with this work. During construction we aim to employ locally supplied contractors and labour – we’d hope that local people can make up the majority of those working on this site. After construction there will be some small-scale ongoing maintenance requirements that would employ local labour.”

The project will require consents from the Northland Regional Council. Meridian hopes to lodge its application for the battery by mid-2022.

Rheilli explained storing power in the battery as ‘reserve energy’ will support the flow of electricity

Continued on page 3

## Private sponsor comes to the rescue of the Waipu ANZAC Parade



Waipu RSA President Dave Wistrand recites the Ode to the Fallen at the Waipu ANZAC ceremony

The Waipu ANZAC Parade was able to go ahead with a pipe band leading it through the centre of town when a local resident, Peter Rogers Jenkin covered the cost of traffic control for the Waipu RSA. The RSA had previously decided not to hold a parade this year after the Whangārei District Council had told it that traffic control could no longer be provided by volunteers from the Waipu Lions Club. The parade held at 11.20am on ANZAC Day, Monday 25 April was well attended despite a shower of rain just as formal proceedings began.



## Langs Beach 1178D Cove Road

4 2 4 3

Price by Negotiation  
 Christine Birss 027 235 4323 [christine.birss@bayleys.co.nz](mailto:christine.birss@bayleys.co.nz)  
 MACKYS REAL ESTATE LTD, BAYLEYS, LICENSED UNDER THE REA ACT 2008

### Pool, peace, privacy, panoramic sea views

Resort style landscaping surrounds the designer pool, plus jacuzzi. Spacious Architecturally designed Tuscan-styled home, built to accommodate those who love being close to the beach and yet really value their privacy. As well as the large home, there is a huge barn with room for everyone to play indoors - man cave even. Plus a riding ring and tack room/sleepout (or maybe see if you can build a tennis court here). Orchard area and gardens, so options to be self-sufficient if you want to retreat from the world. Panoramic sea views too. A fantastic place to rejuvenate and appreciate all that nature has to offer

Retreat to a peaceful place, within easy reach of beach

[bayleys.co.nz/1152501](http://bayleys.co.nz/1152501)



# Unichem

## Orrs Pharmacy



Unichem Orrs Pharmacy Ruakaka  
1044 LANTON, RUAKAKA  
Ph: 091 432 3734

## Managing stress



Everyday life is filled with struggles. For some people, stress is so common that it becomes part of their everyday routine. A little bit of stress on your body won't do you any harm – in fact it can motivate you to do your best. On the other hand, an excessive amount of stress that is ongoing

plays havoc on your physical wellbeing. If you constantly find yourself feeling overwhelmed it's time to get some help.

So, what is stress?

Stress is a physical reaction to events that make you feel threatened or upset your balance. This stress response from your body is its way of looking after you. Up to a certain point a stress response can be very helpful, especially in emergency situations where stress can save your life.

But your body will reach a certain point where stress stops being good and starts causing damage to your health, the way you work, your moods and relationships, as well as your quality of life. The most telling sign of stress becoming detrimental to your health is when it has been ongoing for a long time rather than stress in relation to a particular event.

Your body can't tell whether you have physical or mental threats – so it doesn't matter whether you are having an argument with your spouse or are stuck in traffic, your body reacts as if you are facing a threatening situation. Continually allowing your body to be exposed to this kind of stress can lead to serious health problems, like raised blood pressure or a compromised immune system. This can increase your risk of having a heart attack or stroke and can speed up the ageing process.

**Health problems which can be caused, or exacerbated, by stress, include:**

- Heart disease • Anxiety and depression • Weight control • Digestive problems
- Skin conditions, like eczema • High blood pressure

**Common external causes of stress:**

- Major life changes • Work pressures • Financial problems • Relationship difficulties
- Being too busy • Children and family

**Common psychological causes of stress:**

- Inability to accept uncertainty • Unrealistic expectations • Pessimism
- Perfectionism

So, how do you fix stress? You can fix stress by removing the cause. If you can't remove the cause then you need to learn to manage it. Stress management involves changing the stressful situation when you can, changing your reaction when you can't, taking care of yourself, and making time for rest and relaxation. Getting enough sleep is also an important factor.

It's also a good idea to find a stress release – team sports are a great way of being social while you are doing your body some good. Eating a well balanced diet and getting regular exercise can help you manage your stress.

If you can, talk to your friends or parents. But remember that your community pharmacist is always there to give you lifestyle advice. We are not just all about the pills and potions – we can advise you on exercise, nutrition and your general wellbeing. As the health professional you see most often we are always available if you need to talk.

## EDITORIAL

# Someone tell those protestors its time to move on

There's a lot happening around the Bream Bay area.

I went away for a week's holiday and am only now catching up with all the things that have been going on in my absence.

The Marsden Point Refinery has been switched off. The protestors standing at the Ruakākā roundabout need to come to terms with this fact or do they just enjoy the group solidarity of protesting and any cause will do?

Someone needs to put to those protestors the sobering fact that in the 12 months leading up to the decision to shut down refining operations at Marsden Point the fuel supply companies Z Energy, Mobil and BP paid out \$120 million by way of their purchase agreements with Refining NZ over and above the price they would have paid to buy imported refined fuel.

The refinery has played a big part in the Bream Bay community since it was established in the early 1960s. When you look around many of the facilities we have wouldn't be here if it were not for the refinery. On my list are: the water pipe line between the Ahuroa river near Waipu and Ruakākā linking the water supplies of both communities which was financed by Refining NZ, the Ruakaka Village – built by the New Zealand Electricity Corporation around the Marsden Power Stations which were built to burn oil from the refinery, the NIWA aquaculture farm which utilized the pipes built out into the ocean to bring seawater to cool the power station turbines, the Ruakākā Recreation Centre built on land provided by the Electricity Corporation with funding from the NZEC and the refinery, the Ranburn Retirement complex, which is housed in what were the single men's quarters for refinery staff. The Wilsons Dam, which gives us trout fishing and a secure public water supply into the future, is unlikely to have been built without the refinery's water requirements. But times and circumstances have changed and the best we can do is be grateful for all these assets and move on. The establishment of the NIWA Aquaculture plant is a good example of exactly this.

The soon to be established Meridian Ruakākā Solar Farm at Marsden Point is an exciting development and something that will continue this place's status as an important energy supply hub for New Zealand.

And now there is a prospect of a new airport at One Tree Point. Air New Zealand is looking into electric or hydrogen powered engines for its domestic aircraft fleet. Could the proximity of the Ruakākā Solar Farm with its Battery Storage System ensuring a secure, uninterrupted energy supply be a factor in favour of the new airports location? Wouldn't it be wonderful to be able to fly to Wellington or Christchurch from One Tree Point on board a plane powered by the sun?

Marilyn

# Smooth

## 105.6 FM

*we live here too...*

Your Local Radio Station

[www.smoothfm.co.nz](http://www.smoothfm.co.nz)

## THE BREAM BAY NEWS

is published by Bream Bay News Ltd. Address : RD 2, Waipu  
Phone : (09) 432 0209 Mobile : 027 432 0070  
Editor : Marilyn Cox, , Accounts : Susan McRae  
Advertising design :and website maintenance Megan Lea.  
Printed by Horton Media

## ANZAC remembrance in Kihi Place



For the past few years the residents of Kihi Place, Ruakākā have set up an ANZAC remembrance display in their street with white crosses and red poppies. Some of the householders put up display boards with photographs and stories of great uncles and great grandfathers who served in the World Wars.

## Ruakākā Energy Park “The beginning of next generation electricity grid”

*Continued from page 1.*

across the Cook Strait Cable and will, in effect, help to get more South Island hydro generated power to the North Island. The battery will be charged from the grid. It will be able to provide electricity into Northland during peak demand (high consumption) periods and draw power from the grid during off-peak (low consumption) periods. This smoothing of peak periods will help the operation of more renewable generation in the electricity system. The solar farm will be built once the BESS is up and running. It will have the capacity to supply enough power for 15,000

households.

Rheilli said this is a separate project from one proposed by Refining NZ several years ago. Channel Infrastructure Ltd, now holds the consent granted RNZ for a 25MW solar farm on land adjacent to Meridian’s Ruakākā Solar Farm site.

Meridian Head of Renewable Development Rebecca Knott has said the energy park represents “the beginning of Aotearoa’s next generation electricity grid and supports the country’s transition to 100% renewables.

**BREAM BAY  
CURTAINS  
BLINDS  
AND SHUTTERS**

PH 0204 632 432  
FOR A FREE IN HOME  
CONSULTATION  
CALL SUE

AVAILABLE 7 DAYS A WEEK COVERING  
WHANGAREI TO MANGAWHAI INCL KAIWAKA  
BBCURTAINSANDBLINDS@GMAIL.COM

CALL SUE TODAY  
0204 632 432

**Camp Waipu Cove**

Phone 432 0410      [www.campwaipucove.com](http://www.campwaipucove.com)  
869 Cove Rd, Waipu

New accessible cabin is now complete  
and open for bookings.

Energy Asses  
Silver

Holiday Park  
★★★★★

2021  
**Travellers  
Choice**  
TripAdvisor

THE NEXT PUBLICATION DATE

of the Bream Bay News will be Thursday 12 May  
The deadline for all copy is 4pm on  
Wednesday 4 May

# Introducing Will Browning

I believe in hard work, honesty, integrity and maintaining the highest possible standards to ensure I exceed your expectations! When working with me you can be confident that I will always work longer and harder than anyone else to ensure you succeed. So call me today and let's get the job done right first time.

Will Browning  
020 407 68976  
[w.browning@barfoot.co.nz](mailto:w.browning@barfoot.co.nz)

Bream Bay Branch

BARFOOT  
THOMPSON &

© CHANDRICKA 2018



**Owner /Operator Duncan Mack-**

**GENERAL CARTAGE SERVICE**  
Metal / Topsoil / Sand / Manure / Hay / Silage

---

**WATER**  
Prompt Delivery And Reliable Service.  
Healthboard Approved Drinking Water Carrier.

**Call 021 070 8211**

## New CEO at Community Trust



Sharon Russell

Sharon Russell has been appointed as CEO of the Bream Bay Community Support Trust. She is a registered nurse with strong links to Bream Bay. She can whakapapa back to Patuharakeke and raised her children while living in One Tree Point. She worked as an occupational health nurse for the New Zealand Refining Company and then a Practice Nurse for Doctors De Villiers and Chapman at the Rukākā Medical Centre. She said, “When this job at the trust came up I jumped at the chance to come back and work here.”

Sharon has been a registered nurse for 32 years and for 22 years has held senior management roles.

She was area manager for Northland and Auckland for a company which provides residential and community based rehabilitation services for people who have suffered traumatic or acquired brain injury (such as stroke), overseeing a centre in Whangārei and four more in Auckland. Here she developed an interest in rehabilitation.

She was the first nurse employed by Ki A Ora Ngatiwai, the Iwi Health Provider, which delivers mobile health services throughout the rohe of Ngatiwai, stretching along the east coast of Northland from Rawhiti to Bream Bay, and has been Manager of Clinical Services for Ngatiwai for the past eight years. She has worked closely with Doctor Kyle Eggleton, who was the Kaupapa Māori Medical Practitioner before taking up a position at the Auckland Medical School and who is now Chairman of the Bream Bay Community Trust.


For many years Ngatiwai has provided a regular Wednesday morning clinic at the Bream Bay

Trust, so Sharon already has a close relationship with the Takutai Place centre.

She understands the trust plays an important role in the local community and she believes it has “lots and lots of potential.”

She recognizes there is large elderly population in Bream Bay and hopes to be able to bring more services to the trust so people don’t have to make the trip to Whangārei.

She is pleased to announce that the free Ngatiwai Whanau Ora clinic will now be expanded to two mornings a week and will now be run from 10am to 12noon every Monday and Wednesday morning.



**ON SITE WELDING**  
**MOBILE SERVICE**  
**HEAVY & LIGHT FABRICATION**  
**REPAIRS & MAINTENANCE**  
**ALUMINIUM & STAINLESS**

**Rory McLean** ☎ 021 55 77 94 | 09 556 0558  
✉ rory@millbridge.co.nz 🌐 www.millbridge.co.nz

## ATM to stay in Waipu

The ANZ has agreed to keep its ATM machine in Waipu. This followed a vigorous campaign by the Promote Waipu group, which contacted local Members of Parliament Shane Reti and Emily Henderson and encouraged its members to make complaints to the bank.

The machine is currently located in the window of what was the Wild Tiger specialty food shop but now the “Unbothered Wellness Yoga” centre.

ANZ issued a statement saying it would work with the community to find a more suitable location but in the meantime the machine will remain where it is.

## Building in Whangarei, Kaipara, Far North



### Kidman 212 sqm

**\$479,120 incl gst**

Includes: plans, consent, kitchen, appliances, tinted double glazed windows, tiles, carpet, blinds, heatpump.



Wayne Pickerill  
Managing Director

*“Hi, I’m Wayne Pickerill, Managing Director and Project Manager for your new Fowler Home. Enjoy quality and all the benefits of dealing with an efficient, low overhead, nationwide company, where I will take a personal interest and be involved through to completion.”*



**FOWLER HOMES™**

More designs at [www.fowlerhomes.co.nz](http://www.fowlerhomes.co.nz) or visit our office at 63 Walton St, Whangarei. Phone Wayne Pickerill 438 4840

# Checking no dengue mosquitos have arrived at Marsden Point

Debe Anderson was out checking mosquito traps in Albany Road on Thursday 7 April.

She had a net full of the insects and held it up to my ear so I could hear the buzzing.

She will send them to a laboratory to make sure none are dengue fever mosquito arrived from overseas on a ship at the port or yacht at the Marsden Cove marina.

It's an ever-present threat with dengue mosquitoes present in the Pacific Islands, Australia and South East Asia.

Debe said the dengue fever mosquito, which looks very similar to the striped mosquito with white bands on its legs, is a much greater risk than the malaria mosquito which can't survive in a climate where the temperature regularly drops below 30 degrees centigrade.

Debe had set up a carbon dioxide cylinder in an Albany Rd. garden. Smelling this the mosquitoes think a meal is at hand but as they approach a fan sweeps them into the trap.



Debe Anderson has caught a horde of buzzing mosquito in her trap

## WATER TANK LEAKING ??

- Most leaks fixed whilst tank is full
- Free quotes
- 35 years experience (NZ- WA- SA)
- Testimonials available
- Permanent repairs
- Drinking water approved



Ken Roberts 021 028 81751  
ken@concretewaterproofing.net.nz



Thinking concrete but don't know where to start?

## Think Atlas Concrete

- We quarry the aggregate
- We manufacture the concrete
- We site visit to advise the best options
- We give you the choice of mix and colours
- We give a choice of local placers for you to choose
- We manufacture concrete to your requirements
- We stand by our product, you stand on it

**Atlas Concrete**  
**Your First Call for Concrete**  
**Ph: 0800 888303 - Brynderwyn**  
**or 432 5030 - Ruakaka**



5 Dram Way, Waipu

4 🚗 1 🛁 2 🪑 2 🏠 2+ 📄 748 sqm ↕

Perfectly positioned within a short walk to Waipu Village this is in a highly sought-after location. Four double bedrooms; master complete with ensuite and walk-in wardrobe this is exceptional living. The fully fenced backyard is perfect if you have little ones or pets. The backyard is waiting for the new owners to put their creative juices to work.

**RayWhite**

Carleen Still 021 148 9804 / Malcolm Norton 021 148 533

View  
By appointment or open home.  
Scan for more information!



527 Helmsdale Road, Waipu

3 🚗 1 🛁 2 🪑 2 🏠 4 📄 4.0 ha ↕

With stunning rural views and situated on 4 ha of land, this is your own private hidden oasis. The sunroom is perfectly positioned to enjoy the mornings so you have the ideal location to sit back, relax and soak up the view. This large family home was built in 2007 and it has been loved by the same owners since then. With stunning rural views and situated on 4 ha of land, this is your own private hidden oasis. Walk inside and you are greeted with polished concrete floors and an abundance of storage.

Malcolm Norton 021 148 533 / Carleen Still 021148 9804

View

By appointment.  
Scan for more information!



22 Dundee Lane, Waipu

3 🚗 1 🛁 1 🪑 1 🏠 2 📄 5,415 sqm ↕

This is the perfect home to get you on the property ladder or an ideal investment opportunity. Located approx. 500 metres to Waipu Village this is a 3 bedroom, 1 bathroom 1960s relocatable home on 5415 sqm in Dundee Lane. Recently repainted inside, with a large deck North / North-East facing, you can move in straight away and enjoy the rural lifestyle. Motivated vendors want to sell! Properties like this don't come up very often so make sure you secure your chance to own a piece of Northland.

Carleen Still 021 148 9804

View

By appointment or open home.  
Scan for more information!





**BREAM BAY FIREWOOD**  
 Graham Matthews  
 Phone 027 432 1016  
 456 South Rd., Waipu  
 Email: gmmatthews@xtra.co.nz

**STOP 'N CHOMP**  
 Coffee & food  
 At 76 Waiwarawara Drive, Ruakākā



Open Tuesdays  
 to Fridays 8am -1pm  
 Ph: 027 196 5477

Follow us on facebook for daily menu updates  
 The caravan is also available for catering



**BREAM BAY STORAGE**  
 INSIDE/OUTSIDE storage at 50 Cove Rd., Waipu

Free phone. 0800 432 135  
 enquiry@breambaystorage.co.nz

www.breambaystorage.co.nz



**RUAKAKA SAFE STORAGE**  
 99 MARSDEN PT ROAD, RUAKAKA  
 92 Units from 6 x 3 to 1 x 1  
 Each unit individually alarmed and monitored  
 Electrified security fence  
 Ph. 0508 273 262 or 0275 310 788  
 CLEAN - DRY - SECURE

## Saorsa Retirement Village Trust invites community feedback

The SAORSA retirement village was established in the late 70s on the grounds of what had been the local district high school. Originally SAORSA was run by a committee with representatives drawn from several different local organisations. The Saorsa Retirement Village Trust (SRVT) was formed in 1985. The SRVT still runs the SAORSA retirement village today.

The original purpose of Saorsa was to provide retirement accommodation for the people of Waipu. This purpose has not changed – so wherever possible when filling a vacancy, consideration is first given to accommodating the people of Bream Bay, followed by the greater Whangarei district.

SAORSA offers two types of rental accommodation for those over sixty years of age. Currently there are 21 rental unit dwellings and 29 Occupational Rights Agreement (ORA) dwellings. An ORA allows residents to buy the rights to live in a dwelling and enjoy many of the benefits of home ownership, without having to buy land and maintain a section.

There has always been more demand for rentals than is available, while ORA dwellings generally sell quickly. Simon Couper the Saorsa Village Trust current Char-

man said,

“Over the years numerous local people have given considerable time and effort to the SRVT and the residents of SAORSA village. The SRVT has maintained and improved its assets with a consistent and competent approach to the “Deed of Trust” and changing legal requirements. More land has been purchased and new dwellings built.

“Therefore SAORSA is able to maintain a high standard of housing and the SRVT has the flexibility of a strong balance sheet and bare land which it could develop further.

In 2017 the SRVT adopted the vision “Freedom to enjoy retirement in the heart of Waipu”

The SRVT is currently reviewing this vision and possible development options for the future. The trust invites feedback from Saorsa residents, former trustees, or interested members of the Waipu community. This can be forwarded to saorsavillage@xtra.co.nz

Saorsa is a Gaelic word roughly translating to “freedom”.

## Marsden Maritime appoints new CEO

Marsden Maritime Holdings Ltd. has appointed Rosie Mercer as its new Chief Executive Officer. Rosie has worked for nine years as General Manager of Sustainability at Ports of Auckland and was a member and deputy chair of the Provincial Growth Fund Independent Advisory Panel from 2018 to March 2021.

She served in the NZ Army in Afghanistan in 2009 and 2010 as an engineer officer for the Provincial Reconstruction Team.

She holds a BE(Hons) (Civil), MEngNZ and is a member of the Institute of Directors and will be taking up her new role on July 1 2022.

Company Secretary Gavin Carroll has served as acting Chief Executive Officer since the departure of Felix Richter on 21 January 2022.

Marsden Maritime Holdings Ltd. is a port company with various business activities in the Greater Marsden Point Area, including port operator, Northport Ltd. The Company has an approximately 50% stakeholding in Northport together with over 150 hectares of land holdings in the adjacent area. Marsden Maritime also owns the Marsden Cove Marina and the adjacent haul out facility, which it developed

## High performance sports psychologist to speak in Waipu

The Bream Bay Sports Trust is hosting an evening with sports psychologist Campbell Thompson. Dr. Thompson has a doctorate in Applied Psychology.

from Victoria University in Melbourne. His research focused on the individual differences that allow people to maintain well being and performance under sustained psychological pressure.

He specializes in individual and team performance in high pressure, high stakes situations and currently leads psychological programmes for three of New Zealand’s Olympic sports.

The evening is aimed for the benefit of local sports clubs and schools. It will be held in the Waipu Celtic Barn on Saturday 21 May from 6pm to 8.30pm.



**P: 021 705 837**  
**E: brett@barnbuildersnz.co.nz**  
**W: www.barnbuildersnz.co.nz**

**CONSTRUCTION SPECIALISTS**  
 FARM & LIFESTYLE    LIGHT COMMERCIAL    BARN STYLE HOMES



**Bream Bay Garden Maintenance**

Section Tidy Up · Landscaping · Planting  
 Hedges trimmed · Trees trimmed  
 Weed control · Pruning · Rubbish removed  
 Raised Beds · Water Blasting · Building  
 Painting · Free quotes

**NO JOB TOO SMALL**

One Offs, Weekly, Fortnightly or Monthly

**Phone Marcus 021 343 727**

# ALL OVER COUNTRY

**BAYLEYS**


The farm is in two titles with road frontage, fundamentally rectangular in shape with the entire 82.92 hectares (more or less) being flat in contour and fertile in soil type.



Containing 94.6 hectares (more or less) and in two titles this flat, fertile dairy unit is located only 6km from the township of Ruawai, in the heart of dairy and kumara country.



Containing 129.4 hectare (more or less) and in six titles this flat, fertile dairy unit is located only 6km from the township of Ruawai, in the heart of dairy and kumara country.



Comprising of 191.66 hectares (more or less) in eleven titles, this farm presents as an ideal opportunity for a buyer, who is looking for a farm where scope and potential are unlimited.



Held in two titles is this 164.70 hectare property offering a range of land uses; finishing, beef, sheep and cropping option. The farm is located 63km north-west of Kerikeri and situated in the historic farming community of Broadwood.



Comprising of 345haa is this beautiful sheep and beef farm. It is well tracked with 3,500 stock units through winter, 3x stand woolshed, 2x (3x bay implement sheds), limestone quarry and exceptional fencing.

Specialising in farm sales throughout the Northland region, Catherine and her team are dedicated to delivering premium outcomes for their clients. The results speak for themselves with Catherine being named the No. 1 Bayleys Northland Country salesperson and in the Top 10% of Bayleys salespeople nationwide for 2019, 2020 and 2021. Consistently recognised in the industry as the top country salesperson for Bayleys in the North for the last eight years. Bayleys is New Zealand's number one rural real estate brand, and you can be assured of a powerful reach ensuring your property receives maximum exposure when you trust Catherine and her team with the marketing and sale of your largest asset.

## Catherine Stewart

027 356 5031

catherine.stewart@bayleys.co.nz

MACKY'S REAL ESTATE LTD, BAYLEYS,  
LICENSED UNDER THE REA ACT 2008

*Catherine Stewart*  
COUNTRY SPECIALIST

# MARSDEN PRINT

QUALITY COMMERCIAL PRINTERS

PROUDLY LOCALLY OWNED & OPERATED  
SINCE 2004

- BUSINESS STATIONERY**
- PROMOTIONAL PRODUCTS**
- CARBONLESS BOOKS**
- LABELS, FLYERS, BROCHURES**
- SIGNAGE**
- FULL COPY & BINDING SERVICES**



1/16 Marsden Bay Drive, Ruakaka   
 0800 432 898 | 09 432 8998   
 marsdenprint@xtra.co.nz   
 www.marsdenprint.co.nz 



## The perfect ukelele song



The Flaming Ukes recorded their song at a number of Waipu's landmarks  
 Waipu ukulele group 'The Flaming Ukes' have won a songwriting competition! 'The Perfect Ukulele Song' was written by member Julie Draper and performed by the 'Flaming Ukes,' and filmed starring local Waipu landmarks. It was a competition to write, perform and submit a video of a 60 second original song as part of the recent Mahurangi Ukulele Festival. The Flaming Ukes were judged to be the winners from 30 entries, and have won an electric ukulele and amp which will be put to good use. You can see the video on the you tube link <https://youtu.be/G5RJdGcp3Wo>  
 The Flaming Ukes are available for community events and can be contacted by phoning Robyn on 027 3039212.

Phone the BREAM BAY NEWS 09 432 0209  
 or email: [breambaynews@xtra.co.nz](mailto:breambaynews@xtra.co.nz)  
 if you know of something interesting going on in Bream Bay.

# OUR WHĀNAU JUST GOT BIGGER



**NorthTec is part of Te Pūkenga, the national organisation combining all Aotearoa polytechnics and some industry training organisations.**

In the future our whānau will grow to include all the other polytechnics and industry training, staff, students and programmes across the land. You'll see Te Pūkenga next to our NorthTec logo more and more as our journey together begins. Our people will still be here doing the same thing, in the same way and in the same places, supporting our learners throughout Te Tai Tokerau. That hasn't changed.

We'll always be here to help you be what you want to be.  
 Noho tata, haere tawhiti – stay close, go far.





# “GET HELP WITH FOOD & FINANCES”

- Gino & Olivia

- \* Ask friends or whānau to drop off food
- \* Get deliveries from the supermarket
- \* Support is there if you miss work
- \* Give 0800 512 337 a buzz for extra help



THE PEOPLE'S GUIDE TO  
**COVID**



**NRHCC**  
northlanddhb.org.nz

COVID WELFARE LINE  
**0800 512 337**



# Whangarei District Council News

0800 932 463 [www.wdc.govt.nz](http://www.wdc.govt.nz) Facebook.com/WhangareiDC

## WHANGĀREI AIRPORT LOCATION

On 20 April Council started seeking public opinion about the future of air transport in the Whangārei District.

Council General Manager Infrastructure Simon Weston said three options for further investigation as potential new airports for Whangārei were on the table along with continuing operations at the Whangārei Airport in Onerahi for now.

“We know we need to plan ahead and be ready for change in the air transport sector. The types of aeroplanes in use

may change or Civil Aviation Authority (CAA) rules may change. Either of these could require the airport to shift from Onerahi one day.”

“We have permission from the CAA to use the existing Whangārei Airport at Onerahi for now, even though it has a short runway with smaller than usual safety areas at each end. We have looked at extending the safety margins, but problems with this option mean we have also had to consider new potential sites elsewhere in

our District.

“We have narrowed potential sites down to three. Now we want to hear what the public think about them before taking our investigations further.”

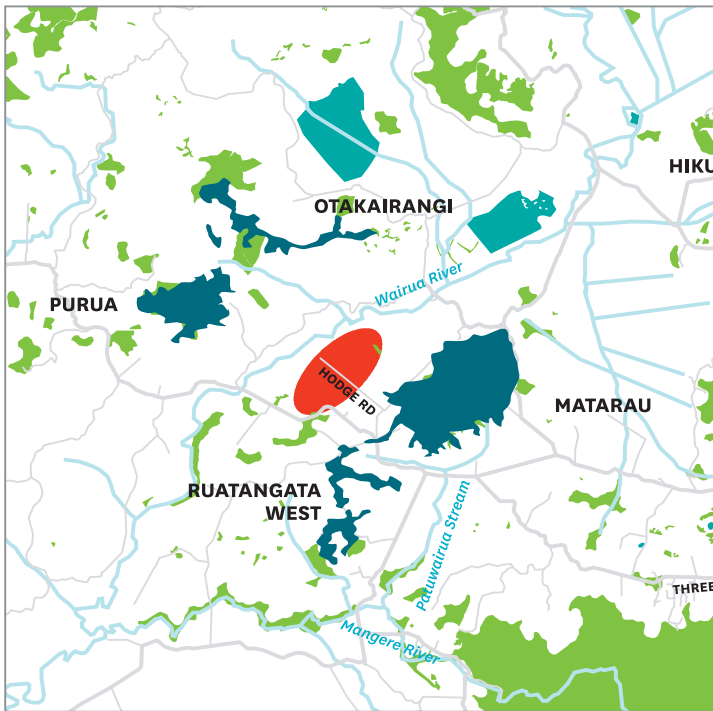
He said the three sites, Ruatangata West, Ruatangata and One Tree Point West all appear to meet many criteria a new airport would require.

This included enough clear flat land for a runway and clear airspace free of obstructions at either end, land for the operational area a new airport

would require, and relatively close links to state highways.

“We know a lot about these sites from our assessments so far, but there are always things that locals know that we might not, and now is the time to find out what people want us to know.

“We will be holding drop-in sessions at Ruatangata, Ruakākā and central Whangārei in the first couple of weeks of May, where people can talk through the detail with us and ask questions. We will be encouraging everyone who

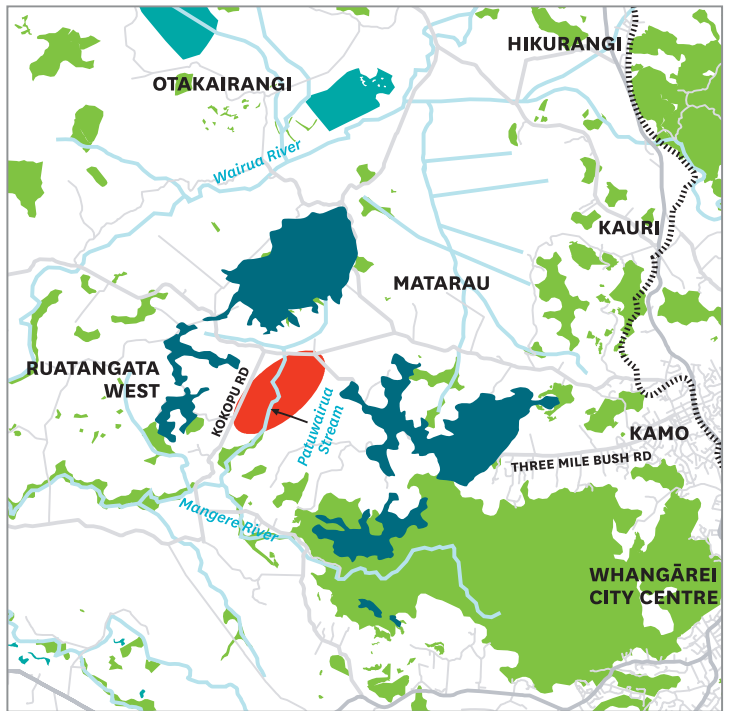


### RUATANGATA WEST

RUATANGATA KI TE HAUĀURU

#### MAP KEY

- Hills and mountains
- Wetlands/lowlands/swamps
- Significant bush reserves
- Footprint of airport



### RUATANGATA

#### MAP KEY

- Hills and mountains
- Wetlands/lowlands/swamps
- Significant bush reserves
- Footprint of airport

The consultation document and information online show the existing airport at Onerahi, plus three broad locations of areas where new airports could be built. Some information has been gathered on each site and many matters for consideration have been listed. Council is now seeking more information from the public about these sites, and an indication of which site people prefer.

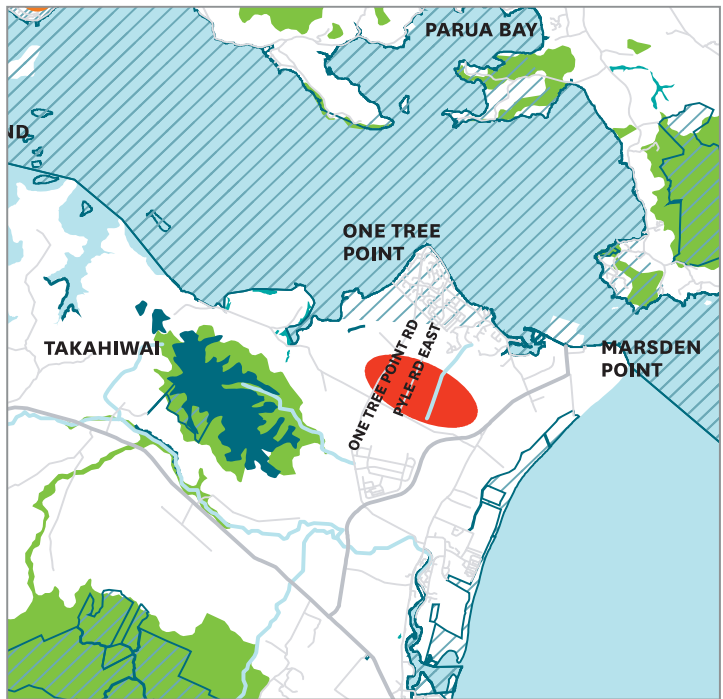


# STUDY CONSULTATION

wants to have input to send in a submission either online, by email, through the post or over the phone. Once we have collected the feedback, hearings will be held, and then Council will deliberate and decide which of the four options to explore further. If a new site is selected several years of work will go into deciding ownership of an airport operation, seeking government contributions for funding and/or ownership, and (if the project goes ahead), design and construction. "We believe an airport that meets the long-term needs for Whangārei and Northland is significantly important to our identity and the Region's growth and economic prosperity. "Infrastructure of this importance takes long term planning to ensure any commitments we make are feasible for our region and that we have taken our responsibilities seriously."

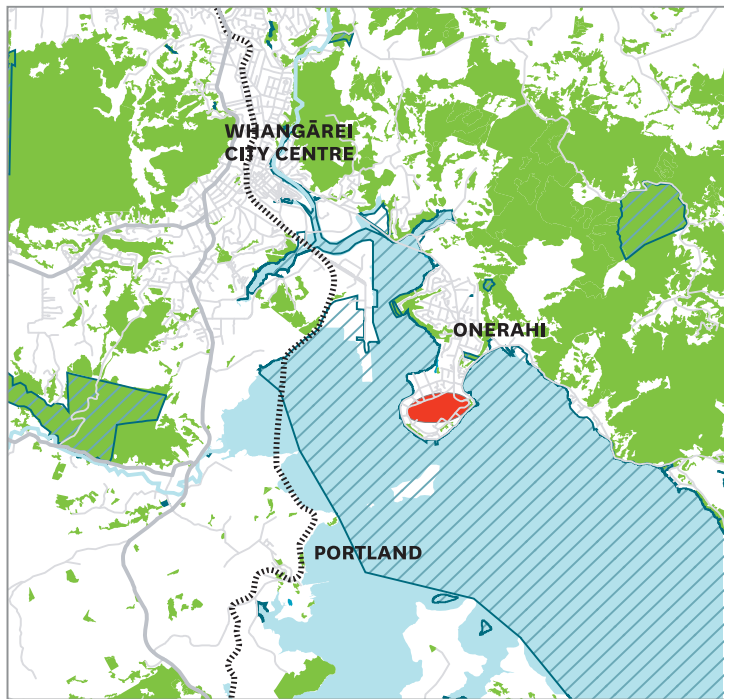


Feedback opened 20 April 2022  
 Feedback ends 25 May 2022  
**To find out more and share your insights:**  
 Visit our website: [www.wdc.govt.nz/HaveYourSay](http://www.wdc.govt.nz/HaveYourSay)  
 Email us: [mailroom@wdc.govt.nz](mailto:mailroom@wdc.govt.nz)  
 Call us: 09 430 4200  
 Pick up a consultation document at Council libraries or Council's customer service centres at Forum North and Ruakākā.  
**Speak to the team at one of our information events**  
 Monday 2 May: Ruakaka Recreation Centre - 4:30-6:30pm  
 Thursday 5 May: Ruatangata Hall - 4:30-6:30pm  
 Thursday 12 May: Forum North, Cafler Suite – 4:30-6:30pm  
 Hui and other meetings can also be arranged by request.

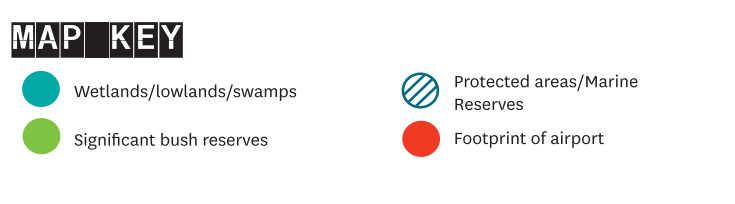


## ONE TREE POINT WEST

### TE POUPOUWHENUA



## ONERAHI



The consultation document shows a basic idea of the locations of the airports. The actual runways, although longer than at Onerahi, will be narrower than the "potential footprint of the airport" shown in red on these maps. The approach paths that aeroplanes can take when approaching or leaving the runways fan out from each end of the footprints. These will be shown in more detail on Council's website when consultation begins, and at the drop in sessions.

**MARSDEN POINT HIGH TIDES**

	AM		PM	
Thu 28 April	5.28	2.6	5.59	2.5
Fri 29 April	6.19	2.6	6.50	2.6
Sat 30 April	7.07	2.6	7.37	2.6
Sun 1 May	7.51	2.6	8.20	2.7
Mon 2 May	8.33	2.6	9.00	2.6
Tue 3 May	9.13	2.5	9.39	2.6
Wed 4 May	9.52	2.5	10.17	2.6
Thu 5 May	10.30	2.4	10.56	2.5
Fri 6 May	11.11	2.4	11.37	2.5
Sat 7 May	11.53	2.3	~	~
Sun 8 May	12.22	2.4	12.39	2.3
Mon 9 May	1.10	2.4	1.29	2.2
Tue 10 May	2.02	2.4	2.23	2.2
Wed 11 May	2.55	2.4	3.21	2.3
Thu 12 May	3.48	2.4	4.19	2.3
Fri 13 May	4.40	2.5	5.15	2.4

# New football season kicks off at Bream Bay United

By BBU Club President Hayden Green

The new football season is upon us and, after the last two were ended prematurely by Covid, Bream Bay United (BBU) is looking forward to a full year of fun, comradery and (hopefully!) success across all age grades. The season is already off to a roaring start, with the club trophy cabinet sporting its first piece of silverware. That came courtesy of our senior women's team, BBU Oliver Tuck Construction (pictured), after they took out the plate final of Northland's annual knock-out competition. In a match postponed by six months the ladies put in a dominant performance before a



Plate final winners BBU Oliver Tuck Construction and coach, Matthew Rowe.

healthy crowd at Seminoff Stadium, triumphing 2-0 over Mad Hatters Red. It was a proud moment for the club and for coach, Matt Rowe.

Our senior men will be striving to replicate that success in the months ahead. Our men's first team – BBU Northpine – boasts a strong line-up and its biggest squad in years. Under the watchful eye of returning senior coach and life member, Andy Ahern, the team will be gunning for its first top-tier title in over a quarter century. Our second team (playing in the third tier) – BBU Bream Team Ray White – is also sporting an impressive squad and will be pressing hard to win promotion. Our third team (competing in the fourth tier) – BBU Porthouse – will be looking to improve on last year's third placing, whilst minimising the number of physio appointments required by some of its more chronologically challenged members (myself included!). The 'club nursery' is also burgeoning. On Thursday afternoons swarms of youngsters with parents in tow descend upon the Ruakaka Recreation Grounds for junior training. For the sheer cuteness factor, nothing tops the organised chaos of our 'first and fun kicks' leagues. Kids as young as four have their first go at kicking a football as doting parents watch on wondering: "am I raising the next Lionel Messi?" There's never a dull moment. I once watched a little boy with the ball at his feet stop dead in his tracks, turn around and walk casually to the sideline to retrieve a sandwich. He then started picnicking – on the pitch – as the match continued around him. You don't see that in the English Premier League.

As per long-standing BBU tradition, our older youth teams will be named after a menagerie of feline critters. This year we'll have a pride of Lions, a shadow of Jaguars, an ambush of Tigers, a leap of Leopards, a clowder of Tomcats and a destruction of Wildcats (I assure you these collective pronouns are all real). Like many before them, these youngsters will strive to tame the notorious "Bream Bay Bobble" – the dreaded, unpredictable 'hop' that the ball often takes on our comically uneven fields. Countless fine players have been made to look foolish by what are, without question, the dodgiest pitches in Northland. Frustrating though the Bobble may be, it'll continue to provide a decisive home field advantage over uninitiated visitors accustomed to playing on flat tracks (with full grass coverage), until such time as the council gets around to fixing our beloved goat track.

Of course, nothing at the club happens in a vacuum. Although we're growing, BBU is still a humble, rural club. The financial support we receive from our team sponsors, our Gold Club sponsor Hansen Drainage and Earthworks, grants and contested funding keep the club afloat. And without the assistance of parents and other volunteers such as coaches, team managers, referees and board members we cease to exist – it's that simple. To that end, I'd like to acknowledge our long-standing secretary and administrator, Robyn Davies, who stood down recently after many years of selfless service. It's impossible to overstate her contribution to the club.

In closing, I'd like to extend an invitation to one-and-all to come along to BBU and get involved in 'the Beautiful Game'. Whether you're interested in watching a quality match on a Saturday afternoon, sponsoring one of our sides, volunteering to coach a team or becoming one of the 265 million people playing football worldwide, we'd love to hear from you. The first matches of the season kick off on Saturday 7 May, so there's still time to get involved. We'll even forgive you if you mistakenly call it 'soccer' instead of its rightful name: football



First Kicks kids training with coach, Jon Proffitt.

## WHAT'S ON IN BREAM BAY

- **COMMUNITY BINGO** on Wednesday 27 th April At the Waipu Citizens and Services Club. Calling starts at 7.30. Restaurant open from 5.30 This is an open event and anybody is welcome
- **THE WAIPU SUNDAY MARKET** next on Sunday 8 May 9am - 1pm in the Coronation Hall.
- **MARSDEN COVE MARKET.** Next on Sunday 15 May in the marquee at Marsden Cove. 9am - 1pm.
- **OTP MARKET.** At OTP Primary School Sunday May 22 from 9am - 1pm. Call Sue 021 530 153 to book a stall. Profits donated to Whangārei Hospital children's ward. Marsden Bay Garden Club will hold a stall at this month's market.
- **WAIPŪ MUSEUM** 36, The Centre, Waipu. Open seven days 10am - 4pm . New Tangata Whenua exhibition.
- **THE RED DOOR GALLERY.** New work by 60, mostly Northland, artists. Runs until the end of January. Gallery open Friday - Sunday 10am - 4pm. The gallery is in the old Waipū Fire Station on The Braigh
- **THE KAURI MUSEUM,** 5 Church St., Matakoho. Open 9am-5pm every day except Christmas Day. www.kaurimuseum.com

### THE NEXT PUBLICATION DATE

of the Bream Bay News will be Thursday 12 May  
The deadline for all copy is 4pm on  
Wednesday 4 May



# Protect yourself and your whānau this winter

With Aotearoa's borders re-open, there's a much bigger chance of catching the flu this winter. Getting a flu jab is your best defence and it's FREE if you're:



- Aged 65 and over
- Māori or Pasifika aged 55 and over
- Pregnant

## Love being active?

**24/7 gym**

- no lock in contract,
- no admin, no joining fee
- \$10 per week
- Ladies only gym
- Unisex gym
- Casual gym \$2 per day

**9 Takutai Place  
Ruakaka  
Ph: 432 7962**

**Opening hours :**  
**Mon, Tues, Wed, Fri**  
**8am to 2pm**  
**Thur 8am to 6pm**

**Come and join us at the  
Ruakaka Recreation Centre**

Like us on Facebook

Lounge available for hire - up to 134 people  
 Meeting room for hire - up to 15 people  
 For events kitchen facility available

Very reasonable rates

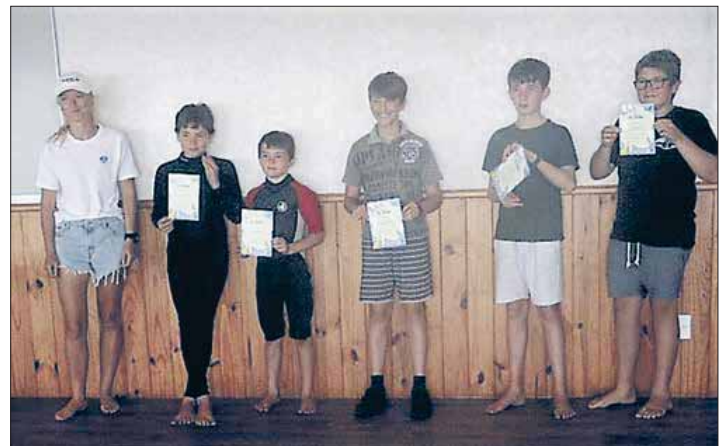
Activity	Day and Time	Cost	Contact
Light Circuit Fitness class	Monday 10am to 11am	\$4	AnnMarie 0211693115
Light Circuit Fitness class	Wednesday 11am to 12pm	\$4	AnnMarie 0211693115
Preschool gymnastic classes	Tuesday 10.45am-11.30am, 11.45am-12.30pm, 12.45pm-1.30pm	\$15 per session	Nadine 029 776 7754
Preschool gymnastic classes	Thursday 2pm - 2.45pm	\$15 per session	Nadine 029 776 7754
Recreational gymnastics	Thursday 3pm - 3.45pm, 4pm-4.45pm for primary age	\$15 per session	Nadine 029 776 7754
Comp Rec gymnastics	Thursday 4.45pm - 6pm	\$20 per session	Nadine 029 776 7754
Zumba Gold	Tuesday 9am to 9.45 am	\$5	Roz rozhzumba@gmail.com
Zumba Gold	Thursday 9.30am to 10.15am, starts 15 April 2021	\$5	Roz rozhzumba@gmail.com
Zumba Gold	Friday 9am to 9.45 am no class 4th Friday of month	\$5	Roz rozhzumba@gmail.com
Aerial Yoga	Tuesday 6.30pm to 7.30pm, booking essential	\$18	Barbara 0212998840
Stretching classes	Thursdays 11am to 12pm	\$5	Lu 4328941
60's up	4th Friday of month 10am to 4pm	\$12 annually fee	Joy 021491887
Music club	1st Monday of month 7pm to 10pm	\$5	Fulco 0274718428
Plates	Tuesday 5.15pm to 6.15pm booking essential	\$12, concession (10x)	Barbara 0212998840
Plates	Thursday 8am to 9am booking essential	\$12, concession (10x)	Barbara 0212998840
Zumba	Monday 8.45am to 9.45am	\$7	Janine 021437840
Zumba	Wednesday 5.45pm to 6.45pm	\$7	Janine 021437840
Zumba	Friday 4.45pm to 5.45pm	\$7	Janine 021437840
casual gym	Monday to Friday 8am to 2pm	\$2 per day	Christine 4327962
casual Squash	Monday to Friday 8am to 1pm	\$5 per hour	Christine 4327962

We are also home to Bream Bay Squash club and Bream Bay United Association Football club

## Certificates awarded to junior skippers



Learn to Sail certificate recipients L to R: Nicola Wilson (Instructor), Levi Pyle, Tommy McClelland, Tia de Jong, Logan Whitelaw and Tyler Hales. Absent Jay Topia



Level 2 Learn to Race certificate recipients, L. to R: Nicola Wilson (Instructor), Israel Pyle, Joshua Pyle, Quinn McClelland, Joel Greene and Liam Hay

Eleven junior skippers recently, completed sailing courses and were awarded Yachting New Zealand Certificates at the Marsden Yacht and Boat Club.. Six completed the Level 1 ("Learn to Sail") Course and 5 the Level 2 ("Learn to Race") Course. Lessons had been held at the club over several Sunday mornings and were conducted by Instructors, Brendan Pol (Level 1) and Nicola Wilson (Level 2). The Awards presentation was held following a fun sail to Snake Bank and a Sausage Sizzle.

Club sailing and racing on Sunday afternoons continues until the end of April. Level 1 Certificate Recipients

## Waipu Presbyterian Parish

**Contacts:**  
**Minister** - Tom Waight - 432 0534  
**Mainly Music** - Sharon Smith - 432 1050  
**Toy Library** - Julie Malone - 432 0388  
**Church Hall Hire** - Cally James 432 0534  
**Family Welfare & Foodbank:**  
 Co-ordinator - Helen Matheson - 432 0239  
**Budgeting Advice** - Bruce Matheson - 432 0239  
**The Crossroads Trust** (financial support) Peter Couper - 432 0524 or email lynettejoines@xtra.co.nz

**Sunday Services**  
**Ruakaka** - Camellia Ave - 8.45am  
**Waipu** - 50 The Centre - 10.15am

*Working with you  
- for your Community*

SKIN CANCER DOCTORS

We are a primary care skin cancer clinic located in the Whangarei Town Basin. We focus on the early diagnosis and effective treatment of skin cancer in a friendly and welcoming environment.

- ✓ Full Body Skin Checks
- ✓ Dermoscopy Analysis of Moles
- ✓ Surgical & Non-Surgical Treatment
- ✓ No Referrals Needed
- ✓ Southern Cross Affiliated Provider
- ✓ Accredited Skin Cancer Doctors with the Skin Cancer College of Australasia

Dr. Christian Wieser  
and Dr. Shirley Wallace.

09 438 2188  
 131 Lower Dent Street, Whangarei  
 admin@skincancerdoctors.co.nz  
 skincancerdoctors.co.nz

As seen on Grand Designs 2019

**COASTAL  
CONSTRUCTION  
PROJECTS**

**0274 320 007**

REGISTERED MASTER BUILDER
QUALIFIED TRADESMAN CARPENTERS
MARCUS@CCP.NZ
WWW.CCP.CO.NZ

# Hospice Shop needs more volunteers

Photo by Susan McRae



Sarah Simperingham shops for bargains at the Waipu Hospice Shop

The Waipu Hospice shop needs volunteers for all seven days of the week. Volunteer Susan McRae said, "We break the shifts down to morning or afternoon, but people can do the full day if they so wish. Both men and women are needed." Susan explained that on Saturdays and Sundays the shop is only open in the mornings, while Monday to Friday it is open from 9.30am to 3.30pm.

"Perhaps some Year 12 or 13 students might like to put up their hands for the week-end help. This volunteering would be a good addition on their CVs."

She also suggests that there might be "golf, bowls or other hobbies widows" out there who might like to volunteer while their partners are at these sports.

"It is a great way to give back to the community and meet new people. It can be a very sociable time with plenty of laughter and chatter."

"We have had a shortage of volunteers for a while now, mainly due to people moving away from the area or have had to step back due to health problems and some going back into paid employment."

All training will be given on the job. Anyone interested in becoming a Waipu Hospice Shop volunteer can call into the shop at 54 The Centre, Waipu to pick up an application form.

## After two years of cancellations Art 'n Tartan will be back in October

The organising committee for Art'nTartan wants to advise contestants, models, sponsors, supporters, volunteers and all the people who buy tickets, that Art'nTartan will be back in October this year. Letters are being sent out to contestants who entered the show that was cancelled due to Covid, and the committee expects to issue full details for the 2022 October event in May.

"Watch this space!" says committee member Sue Welford.

## Kaiwaka to Whangarei

SERVICE OPERATES EVERY THURSDAY MORNING

9.00am	Departs	Kaiwaka Kaiwaka Hall
9.15am	Departs	Mangawhai Village Village Shops Bus Stop (by restrooms)
9.20am	Departs	Mangawhai Heads I-Site
9.35am	Departs	Langs Beach Corner of Wairahi and Cove Roads
9.40am	Departs	Waipu Cove Beach Car park
9.50am	Departs	Waipu Monument Bus stop
10.10am	Departs	Ruakaka Peter Snell Road (opposite Takutai Place)
10.50am	Arrives	Whangarei Rose Street Bus Terminus

### AFTERNOON

3.00pm	Departs	Whangarei Rose Street Bus Terminus
3.40pm	Departs	Ruakaka Peter Snell Road (opposite Takutai Place)
4.00pm	Departs	Waipu Monument Bus stop
4.10pm	Departs	Waipu Cove Beach Car park
4.15pm	Departs	Langs Beach Corner of Wairahi and Cove Roads
4.30pm	Departs	Mangawhai Heads I-Site
4.35pm	Departs	Mangawhai Village Village Shops Bus Stop (by restrooms)
4.50pm	Arrives	Kaiwaka Kaiwaka Hall

### ROUTE DETAILS

FARES	One Way	Return
Kaiwaka	\$7.00	\$10.00
Mangawhai	\$7.00	\$10.00
Mangawhai Heads	\$7.00	\$10.00
Langs Beach	\$7.00	\$10.00
Waipu Cove	\$6.00	\$8.00
Waipu	\$6.00	\$8.00
Ruakaka	\$5.00	\$7.00

OPERATED BY:



PH: 0800 994 404  
E: office@leabourn.co.nz

IF YOU WOULD LIKE TO BE PICKED UP ELSEWHERE ALONG THE ROUTE, PLEASE PHONE LEABOURN'S TO ARRANGE THIS ON THE WEDNESDAY BEFORE YOU WANT TO TRAVEL.

CITYLINK For travel within Whangarei see CityLink Whangarei timetable [www.citylinkwhangarei.co.nz](http://www.citylinkwhangarei.co.nz) or get your timetable from the Rose Street office.

### SUMMER BEACH BUS 2021/2022

BEACH BUS TO RUAKAKA BEACH Operating every Thursday from 23 December 2021 until 27 January 2022  
FARES \$10.00 per person return trip.

11.15am	Departs	Whangarei Rose Street Bus Terminus
12.00pm	Arrives	Ruakaka Beach
2.00pm	Departs	Ruakaka Beach
2.45pm	Arrives	Whangarei Rose Street Bus Terminus

### BREAM BAY



WITH FUNDING FROM  
WAKA KOTAHĪ  
NZ TRANSPORT  
AGENCY

For more info visit [www.buslink.co.nz](http://www.buslink.co.nz)



## THE MAINTENANCE

[www.themaintenance.co.nz](http://www.themaintenance.co.nz)

- ❖ Chemical and non-chemical house washing
- ❖ Window and house cleaning
- ❖ Painting and staining – exterior house, decking and fences
- ❖ Water blasting - decks, driveways and courtyards
- ❖ Clean guttering and downpipes
- ❖ Pest control and spider spraying
- ❖ Tree trimming with extension saw

Phone now for a **FREE QUOTE**

REVITALISE ❖ PRESERVE ❖ PROLONG ❖ MAINTAIN

**TONY 021 196 2949 OR MELISA 021 075 6770**

# TRADES & SERVICE DIRECTORY Ph 09 432 0209

## WhiteWash

Low pressure house cleaning

- Pest control
- Window cleaning
- Roof cleaning
- Gutter cleaning

Murray White  
**027 452 2430**  
[murraywhitewash@gmail.com](mailto:murraywhitewash@gmail.com)

## Ideas that grow business

Call for help with your marketing

**021 482 348**

Ph. 021 074 8466 Waipu

We are a locally owned window and house cleaning business dedicated to bringing that sparkle back to your residential or commercial properties. With a friendly and efficient team we pride ourselves on making sure your property shines all year round.

Contact us for a free Quote!

**Crystal Clear Windows**  
[crystalclearbreambay@hotmail.com](mailto:crystalclearbreambay@hotmail.com)

# TRADES & SERVICE DIRECTORY Ph 09 432 0209

**NORM FAGG**  
OWNER / OPERATOR

**Act Now**  
**Car Rentals**

M: 0274 362 480  
Nz Freephone: 0800 362 480  
E: info@actnowrentals.co.nz

**From \$45 per day - Min 4 days**  
Based in Ruakākā

**Ph: 09 432 0123**

**BREAM BAY GLASS**  
FOR ALL YOUR GLASS NEEDS



Mob: 0274954548

**AMG**  
AUTO MOBILE GLASS

**FAST WINDSCREEN REPLACEMENTS & CHIP REPAIRS**

- Mobile service or come to our workshop
- Ultra competitive pricing. • Insurance claims welcome.
- Windscreen replacement in under an hour.

**Phone Conrad on 022 036 2916**  
2/17 Gumdigger place.

**BRADLEY**  
**EARTHWORKS**

• POND CLEANING • DRIVEWAYS • RACEWAYS  
• LAND CLEARING • TREE REMOVAL • ROADING AND MORE!

**CALL ME TODAY FOR ALL YOUR EARTH & TREE WORKS**  
**PHONE ROY 027 374 5090 WAIPU**

**ABSOLUTE CONCRETE**

[www.absoluteconcrete.co.nz](http://www.absoluteconcrete.co.nz)  
CULVERT PIPES  
Spun and reinforced  
*Crane truck delivery*  
Drainage Merchant - Hardware Store  
Email: sales@absoluteconcrete.co.nz  
Phone (09) 431 2211  
KAIWAKA

**MACSWAY**  
SCAFFOLDING LTD

**WE BUILD, HIRE, ALLOY MOBILES, TEMPORARY FENCING, & SHRINKWRAP**

Ph: 09 432 7643 • 0274 726 772  
macsway@xtra.co.nz Kapa Road, Ruakaka

**O'MALLEY CONTRACTING LTD | CONCRETE SPECIALISTS**

- FOUNDATIONS
- HOUSE SLABS | STAIRS
- RETAINING WALLS
- DRIVEWAYS | CARPARKS
- EXPOSED AGGREGATE
- COLOURED CONCRETE
- COMMERCIAL | RESIDENTIAL
- LICENCED BUILDING PRACTITIONER

Free No Obligation Quote

FAMILY OWNED & OPERATED

021 2200 198 | [OMALLEYCONTRACTING.COM](http://OMALLEYCONTRACTING.COM)

**Bream Bay Concrete Ltd.**

Free Quotes • Reliable Service • Quality workmanship

- Concrete pads
- Shed floors
- Pathways
- Home floors
- Driveways
- Concrete cutting
- Excavation works
- Retaining walls
- Paving fences
- Profiles for homes & sheds
- Subfloors & boxing

**Mark Royals Ph: 432 0107 Mob: 0274 433 130**

**BREAM BAY ELECTRICAL**

BREAMBAYELECTRICAL@GMAIL.COM

**MASTER ELECTRICIANS**

**0800 BBE 555**  
**027 35 33 555**

**Ashleigh Louise**  
Coastal and Lifestyle Sales  
Bream Bay

027 733 5703  
a.louise@barfoot.co.nz

**BARFOOT THOMPSON**

**TC & ENGINEERING**  
Metalwork Specialists

Stainless and Aluminium Welding and Bespoke Fabrication



Gates and outdoor furniture. Marine repairs and fabrication.  
Onsite welding for farm repairs and modifications.  
[www.tcengineering.nz](http://www.tcengineering.nz) 021 145 7075 or 021 203 0309

**Tractor Mulching**

100hp tractor with high bodied yffails, mulcher, park finishing mowers, slashing Gorse & blackberry spraying

Also mechanical tractor repairs

Phone Bain McGregor  
0274 979 013  
or 09 432 0527



**Grant McLean**  
Stock Agent for Bream Bay

Ph 021 7758 48  
Email: [skincarla@xtra.co.nz](mailto:skincarla@xtra.co.nz)

All aspects of stock sales including:  
• dairy beef • bobby calves • store cattle • live export heifers  
• sheep • pigs • supplying stock for slaughter

Also caters for small block holders.

**Carrfields** Livestock

**Ruakaka Motors**

Mechanical and Auto Electrical Repairs and Servicing

**mla**

Monday - Friday 7.30am - 5pm  
Open Saturday morning 8am - 1pm.

Tyres and Batteries  
Warrant of Fitness testing  
**Phone 432 7233**

**PARADISE QUARRY**

**PARADISE QUARRY STONEMASONS**

Specialists in stunning stone for landscape  
Suppliers & installers of northland's own schist for all your stonemasonry & landscaping Requirements

(09) 432 2722 or GEOFF (021) 972 139  
[www.paradisquarry.com](http://www.paradisquarry.com)

**The Office Chick**

Phone/Text: 027 235 3479  
Email: [admin@theofficechick.net](mailto:admin@theofficechick.net)  
[www.theofficechick.net](http://www.theofficechick.net)

Virtual assistant for all your administration, accounts and secretarial needs.

Mobile service - your office or ours.  
Pick up and delivery service available.  
[theofficechick](http://theofficechick)

**BLIND PRO**

Blinds • Awnings • Shutters

Indoor blinds and outdoor screens

Call us today for a free, no obligation consultation and quote

ph 09 423 9661  
website [www.blindpro.co.nz](http://www.blindpro.co.nz)  
email [info@blindpro.co.nz](mailto:info@blindpro.co.nz)

**McQUINN PUMPS**

How's Business? ... It's Pumping!

24/7 SALES, SERVICE & INSTALLATION | PUMPS & WATER TREATMENT  
PHONE SUPPORT AVAILABLE

**0800 627 846**  
PHONE FREE

**NOW AT 72 KIOREROA ROAD**  
—ALONG FROM RD1 & ITM

## Deadline for next issue - Wednesday 4 May



# TRADES & SERVICE DIRECTORY Ph 09 432 0209



**HANSEN**  
Drainage & Earthworks

**DRAINAGE:**  
\* Septic Systems \* Water Tanks \* Truck & Digger Hire \*  
\* Subdivisions \* Domestic \* Commercial \*  
Certifying Drainlayers

Licensed Contractor for  
Waste & Drainage Work



**EARTHWORKS:**  
\* Subdivisions \*  
\* Farm Work: Effluent Pond Design & Build, Dams, Races \*  
\* House Sites \* Driveway Prep \* Lawns \* Roading \*

P. 09 432-7877 M. 027-432-7877  
E. karl@hansende.co.nz

Ash Worthy Small Block Mulching



**NO JOB TOO SMALL!**  
027 313 4429



**Brian the Painter**  
Decorator, Restorer, Handyman  
Property Maintenance

No job too small,  
No travelling time charges  
Free advice



Phone 0274 882371 Or 09 431 4882  
Email: hollis@hotmail.co.nz



**STORAGE  
BREAMBAY**  
76 Waiwarawara Drive, Ruakaka

storagebreambay@gmail.com  
021 432 701  
(09) 432 77 32

www.storagebreambay.co.nz

**LOW COST DRIVEWAYS & SURFACING NEEDS**  
Concrete or asphalt beyond your budget ...

We have the next best solution for a fraction of the price.

Call for a quote, you'll be pleased you did!  
Paradise Quarry Contractors

**Geoff (021) 972 139 or (09) 432 2722**  
For contractors who 'think' ...



Long Run Roofing & Cladding  
Re-roofing & Spouting  
Edge Protection

**Terry Mounsey**  
021 562 269  
wetaroofting@xtra.co.nz

**RELIABLE & PROFESSIONAL SERVICE**



Panelbeating and Spraypainting  
Caravan and Motorhome Repairs  
Tyres New and Secondhand  
Punctures

470 Marsden Point Rd, Ruakaka  
Call 09 4330313 24 Hrs or Bert 021 983 724

**M.V.B. Electrical Ltd.**  
*Working in Bream Bay since 1977*

Repairs • Installations • Advice

**Mike van Blommestein**

Phone: 09 432 1015 • Mobile: 0274 783 749  
Email: mikevanb@xtra.co.nz

**NORTHLAND CLEANING SOLUTIONS**  
*We have the solution for your needs*



- Commercial/Domestic Cleaning
- Builders/Construction cleaning
- Carpet/Upholstery Cleaning
- Carpet Reairs/Laying
- Flood Restoration
- Property Maintenance Solutions & More.

Rochelle & Jason Brownlie  
Mbl: 021 155 0319 Email: rochelle@ncsl.nz  
Website www.northlandcleaningsolutions.nz

**GRAEME BINT FENCING**

GOOD RATES, NO JOB TOO SMALL

09 432-1599 or  
027-292-2833

grbint@xtra.co.nz

**MANGAWHAI SMALL ENGINES**  
Grasshopper, Husqvarna and Honda dealer




194 Molesworth Drive, Mangawhai  
Ph: 09 431 5270 or Mb: 021 655 481  
Email: msengines@xtra.co.nz

**BLINDS & SHUTTERS**  
WHANGAREI  
Locally Owned and Operated

**Rollers, Venetians, Verticals & Shutters**



Ask about our DISCOUNT for houseslots  
Free in-home measure & quote  
Free Installation

Phone Gail 0211 95 35 35

www.blindsandshutters.co.nz

**BREAM BAY ACCOMMODATION**  
RUAKAKA

STUDIO - HOLIDAY HOMES - B&B

BOOK ONLINE OR PHONE

Ph: 09 432 7025 Mob: 021 2722 739  
website for online bookings: www.breambayaccommodation.com

**LAWSON CARTAGE**

FOR ALL YOUR EARTHWORKS & CARTAGE NEEDS  
Suppliers of: topsoil, compost, woodchip, bark, sand, pebble, rocks and firewood.

Ph/Fax 09 432 8418 or 021 768 940

458 Marsden Point Rd. PO Box 142, Ruakaka 0151  
email: lawsoncartage@xtra.co.nz

**Susan, the Painter**

Phone for a free quote



Ph. 027 370 5339



**G&P Asbestos removal**

Garry Smith  
Mob 027 738 7888

Textured Ceilings  
Asbestos Fibrolite  
Asbestos Lagging

Ph 09 432 7305  
Fax 09 432 7304  
email: gpasbestos@xtra.co.nz  
14 Bream Bay Drive, Ruakaka, 0116

**SERVICES OFFERED**

**ART HANDLER.** Professional. 5 years experience at the NGV in Melbourne moving and installing all types of art from paintings to sculptures, any size, any weight, any age. Rory 021 139 2553. eightythreephoto@me.com

**NORTHLAND HEADSTONES**

Located in One Tree Point  
Your Local Headstone Showroom  
Call 0800 707 800  
www.northlandheadstones.co.nz

**Tree Removal**  
Cut it! Chip it! Grind it!  
✓ Pruning  
✓ Chipping  
✓ Stump grinding  
Qualified & Insured  
Ph Scott (0800) 468-9663  
Arborcare  
Tree Maintenance

**LINKING HANDS**  
Health Shuttle  
Phone  
(09) 431 8969



**Waipu Boarding Cattery**  
Excellent care and accommodation  
Ph Sue 432 0394

**GLENMOHR water care**  
WATER TANK CLEANING  
No need to empty your tank  
• Vacuum or full scrub  
Phone Mark Draper  
0274 707 607

**PHOTOGRAPHER AVAILABLE.** Waipu, Commercial, real estate, weddings, documentary, aerial, drones, events. Ph: 021 139 2553. EIGHTYTHREEOHOTO.COM

**WORK WANTED**

**RETIRED MALE** 66 seeks p/time work to supplement benefit, light driving/delivery, etc. Consider anything not too heavy Ph 020 405 01313

**WANTED**

**VEHICLES WANTED**  
Top cash paid For any VANS, UTES, TRUCKS, 4X4, Dead or Alive, damaged, de-registered Mechanical problem, no WOF we buy it. Call 0800 333 398

**CLASSIFIED ADVERTISING**

Costs \$5 for up to 20 words and 20c for each additional word.  
Boxed, classified adverts cost \$15 plus gst  
Phone your advert through to 432-0209  
email it to breambaynews@xtra.co.nz  
Post to: Bream Bay News, RD 2 Waipu 0582  
or leave it with payment at The Waipu Post Shop  
or the Ruakaka Gift and Lotto Shop

**FOR SALE**

**BUNK BEDS,** solid wooden frame. Very good mattresses. Pick up Waipu Cove. Pictures and measurements available. \$100 Ph 021-625-250

**WATER TANKS**

sales@absoluteconcrete.co.nz  
09 431 2211

**RAWLEIGH'S PRODUCTS** Independent dealer. Phone Susan McRae 027 227 2291.

**Scooters Ply Wall Lining**  
9mm MDF Grooved Deliveries  
438 6565

**WORMS FOR SALE**  
For worm farms  
Phone 432 0209  
or text 027 432 0070

**SITUATIONS VACANT**



**VACANCY**

**RETAIL PERSON – Orrs Unichem Pharmacy Ruakaka**

- Part Time: Four days per week and rostered Saturdays

We are looking for a part time Retail person. We're searching for a proactive person who loves the challenge and buzz of selling, and will deliver exceptional levels of customer service. The role requires drive, enthusiasm, reliability and flexibility.

To succeed in these positions, you must have great customer service skills, a passion for the health and beauty industry, commitment to achieving sales targets, excellent communication skills, with a high standard of grooming and presentation, maintaining and encouraging a positive team environment, flexibility to cover holidays and absences. Experience with computer processing will be an advantage.

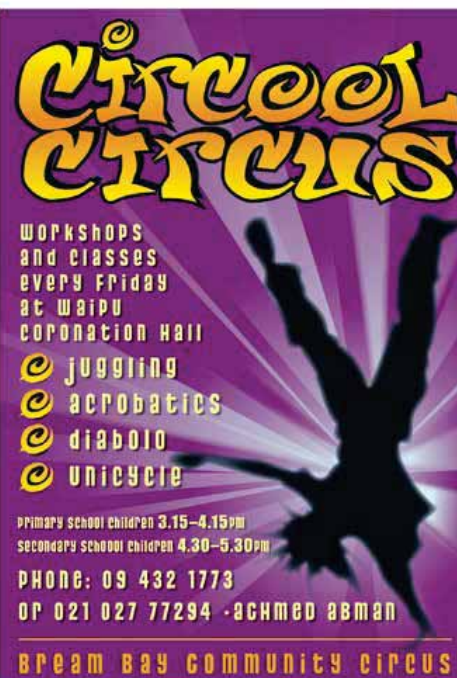
Responsibilities include efficient stock control, coordination of health promotions, exceptional customer service, maintaining exceptional store standards and driving retail promotions & events.

The positions will involve working week days (9.00am-5.30pm) as well as Saturdays (9.00am-12.30pm) according to the Saturday roster.

Please send a CV either to: ruakakaa@orrs.co.nz or drop into Orrs Unichem Pharmacy Ruakaka, Town Centre, Ruakaka

Applicants for this position must have NZ residency or a valid NZ work permit, drivers licence.

**CLASSES**



**WORKSHOPS and CLASSES EVERY FRIDAY at WAIPU CORONATION HALL**

- JUGGLING
- AEROBATICS
- DIABOLO
- UNICYCLE

Primary school children 3.15-4.15pm  
Secondary school children 4.30-5.30pm  
PHONE: 09 432 1773  
OR 021 027 77294 -ACHMED ABMAN

**Bream Bay Community Circus**

Circool Circus weekly classes every Friday at the Coronation Hall, Waipu will start on the 20th of May 2022  
For more information please contact Achmed 021 027 77294 or achmedabman@yahoo.com

**NEED HELP WITH TECHNOLOGY?**

SeniorNet Bream Bay continues to operate

Activities will resume from 9th May with no restrictions.  
Wearing masks a must.  
Free membership to AMI customers

Bookings essential, please contact:  
Learning Centre: 09 432 7692  
or Dorothy 432 7412 (leave a message)  
Or email - seniornetbb@gmail.com

Course venue: Learning Centre, 7 Kapa Road, Ruakaka

**MARKETS**



**Handmade & Homegrown**  
ARTS | CRAFTS | FOOD

**Sunday 8 May**  
9:00am - 1:00pm  
Waipu Coronation Hall

Claire | 021 272 2294  
Kate | 021 064 5698  
www.waipumarket.co.nz

**PUBLIC NOTICES**



**Call for Submissions**

*Request for a further temporary fisheries closure at Mair Bank and Marsden Bank (Marsden Point), to the take of all shellfish*

Pursuant to section 186A of the Fisheries Act 1996, the Patuharakeke Te Iwi Trust Board have requested a further temporary closure at Mair Bank and Marsden Bank (Marsden Point) to the take of all shellfish. The requested closure is for a two year period.

The approximate area of the proposed closure includes the fisheries waters at Mair and Marsden Banks, starting at the end of the Marsden Point oil refinery jetty, proceeding to the Whangarei Harbour main channel port-hand buoys no. 18, no. 16, and no. 14, then proceeding in a westerly direction to the mean high-water mark.

A copy of the request and a map of the proposed area is available on the Ministry for Primary Industries website ([www.mpi.govt.nz/consultations](http://www.mpi.govt.nz/consultations)), or by contacting Fisheries New Zealand at the below address or [FMSubmissions@mpi.govt.nz](mailto:FMSubmissions@mpi.govt.nz).

Pursuant to section 186A(7)(a), Fisheries New Zealand invites written submissions in response to the request from persons who have an interest in the species concerned or in the effects of fishing in the area concerned. Further information about temporary closures is available on the MPI website ([www.mpi.govt.nz/fishing-aquaculture](http://www.mpi.govt.nz/fishing-aquaculture)), or by contacting Fisheries New Zealand at the below address or [FMSubmissions@mpi.govt.nz](mailto:FMSubmissions@mpi.govt.nz).

Submissions can be made up to 5pm on Monday, 30 May 2022. You can email your submission to [FMSubmissions@mpi.govt.nz](mailto:FMSubmissions@mpi.govt.nz).

While we prefer email, you can post your submission to:

Spatial Planning and Allocations  
 Fisheries Management  
 Fisheries New Zealand  
 PO Box 2526  
 Wellington 6140.

**Submissions are public information**

Note that all, part, or a summary of your submission may be published on the MPI website. Most often this happens when we issue a document that reviews the submissions received.

People can also ask for copies of submissions under the Official Information Act 1982 (OIA). The OIA says we must make the content of submissions available unless we have good reason for withholding it. Those reasons are detailed in sections 6 and 9 of the OIA.

If you think there are grounds to withhold specific information from publication, make this clear in your submission or contact us. Reasons may include that it discloses commercially sensitive or personal information. However, any decision MPI makes to withhold details can be reviewed by the Ombudsman, who may direct us to release it.

Marianne Lukkien, Manager National Direction



MPI 4395

**PUBLIC NOTICES**



**Bream Bay Medical Centre Ltd.**

**Ruakāka Town Centre, Ruakāka**

**Monday - Friday: 8.30am - 5pm**  
**Saturdays: 9am - 12pm**

**Marsden Cove Medical Centre**  
**1A Ngawaka Lane, One Tree Point**

**Monday - Friday: 8.30am - 5pm**  
 Please advise at time of booking  
 if you require an extended consultation

**Ph: 432 8060**

**Flu vaccinations available - ring for an appointment.**

**Waipu Volunteer Library AGM**

Friday 13th May.  
 All welcome.  
 Ph: 432 0375

**WAIPU GOLF CLUB 88th Anniversary**

Tournament  
 Saturday, 30 April 2022  
 For further details  
 phone Waipu Golf Club  
 09 4320259.

**BREAM BAY SUNDAY CHURCH SERVICES**

**Presbyterian** Camellia Ave, Ruakaka: 8.45am. The Centre, Waipu: 10.15am.  
 Prayer Service: 7pm

**Encounter** 223 Marsden Pt. Rd, Ruakaka, 10am.

**Anglican** 1st and 3rd Sundays - St Paul's Ruakaka 2nd and 4th Sundays - St Peter's Waipu. All services start at 9.30am.

**Catholic** Holy Family Church, Ruakaka, 10.30am. Mass or Liturgy of the Word

**Lifepoint.** 300 OTP Rd, 10.30am.

**COMMUNITY BINGO**

on Wednesday 27 th April  
 At the Waipu Citizens and Services Club  
 Calling starts at 7.30  
 Restaurant open from 5.30  
 This is an open event and anybody is welcome

**RUAKAKA RESIDENTS AND RATEPAYERS ASSOCIATION INC.**

**Notice of Annual General Meeting**

7pm Tuesday 10 May 2022.  
 Ruakaka Rec Centre

All Ruakaka residents welcome.  
 We are hoping to have a guest speaker of local interest.  
 This will be followed by a short AGM and refreshments.  
 Come and meet some fellow locals and hear our chairman cover highlights of the past year.

Any queries email our Secretary:  
[richardmorris01@xtra.co.nz](mailto:richardmorris01@xtra.co.nz)

No charge although we will be accepting new membership applications.

**WAIPU RSA WOMENS SECTION ANNUAL GENERAL MEETING**

Will be held at the  
 Waipu Citizens and Services Club Rooms  
 on Monday 2nd May 2022  
 at 10.30 am.

**KAIWAKA KNITTING GROUP NEEDS YARN FOR WHANGAREI HOSPITAL**



We are running out of yarn to knit. Do you have wool, synthetic, cotton or any yarn tucked away that you will never use and could give to us?  
 We are a small group who meet every second Tuesday of the month at 10am at the Apple Basket shop in Kaiwaka. We knit various items for the children in Ward 2 and dialysis patients at Whangarei Hospital.  
 Although we have had generous amounts of yarn already we need more in any quantities  
 Should you be able to help please phone Gale 09 431 4827 or leave donations at the Apple Basket on SH1 at Kaiwaka.

**SUPPORT SERVICES**



**Bream Bay Community Support Trust**

Phone, Ruakaka Phone 09 432 7197

**SERVICES WE PROVIDE:**

- Family Support – Registered Social Workers
  - Family Violence Support
  - Youth Services- Youth Workers
  - Youth Hang Out Space
  - Community Connector (Connecting community to various services)
  - Driver Mentor Programme
- Free Ki A Ora Ngatiwai Medical Clinic (Monday and Wednesday mornings 10am-12 noon by appointment only)  
 Free Budgeting Service (by appointment)

**THE NEXT PUBLICATION DATE**

of the Bream Bay News will be Thursday 12 May  
 The deadline for all copy is 4pm on  
 Wednesday 4 May



# Harcourts Waipu

**SPECTACULAR COASTAL VISTA**  
**SET DATE OF SALE (Unless Sold Prior)**  
**Closes 4th May at 4pm**

- Spacious 240m<sup>2</sup> home on 2039m<sup>2</sup> site
- 4 bedrms / 2 bathrms / 2 lounges / 1 office
- Rural peaceful setting with utterly amazing coastal views
- Fab indoor/outdoor flow from living areas to extensive decking
- Double garage and standalone garage
- First time on the market for nearly 50 years

**OPEN: Sat 30th Apr & Sun 1st May 12 – 12.45pm**  
 221 Doctors Hill Road, Waipu  
 Judy Guy 027 221 5623 **WPU11386**

**LOCATION AND VIEWS**  
**Enquiries over \$950,000**

- 4 bedrms / 2 bathrooms / 2 lounges
- 1.095 ha lifestyle property with fabulous ocean and island views of Bream Bay
- Bush walks on your doorstep
- Repainted. Still some work to complete but an opportunity to make your own mark
- Wood fire and heat-pump
- 12-minute drive from Waipu village

Roger King 0277 555 001 **WPU11384**

**SUPERIOR ELEGANCE**  
**Price by Negotiation**

- 3 bedrms / 2 bathrms / 1 study
- Only 4 years' young set on 1333m<sup>2</sup>
- Separate lounge captures all day sun
- Open plan living with a designer kitchen
- Covered deck perfect for entertaining
- Double garage and parking for the boat
- Vege gardens, citrus and fruit trees
- Easy walk to Waipu village

Judy Guy 027 221 5623 **WPU11376**  
 Lyndie Mullins 021 101 6389



# Frazerhurst

Curtains | Blinds | Awnings | Screens

*39 years in the window furnishing business*



Come and talk to us about your window dressing requirements

- We are local - based in Whangārei
- We have an extensive showroom
  - Loan samples available
- We provide an excellent back up service



Blinds | Awnings | Shutters | Umbrellas

146 Lower Dent St.  
 Whangārei  
 Ph: 09 438 3986  
 0800 102 710  
[www.frazerhurst.co.nz](http://www.frazerhurst.co.nz)



**BREAM BAY REALTY LIMITED (LICENSED: REAA 2008)**

Shop 11 | Town Centre | Ruakaka 0116 | NZ  
 PH: 09 433-0300 | [bbrealty.co.nz](http://bbrealty.co.nz)  
[info@bbrealty.co.nz](mailto:info@bbrealty.co.nz)

Proud sponsors



<p><b>New Listing</b></p>  <p><b>OPEN HOME—SUNDAY 2.00—2.45pm</b>              37 Peter Snell Road, Ruakaka</p>	<p><b>DITCH THE CAR</b>                  This 3-bedroom family home has a no fuss open plan living area with a well-appointed kitchen which leads through to a separate laundry. It has had a comprehensive facelift which cleverly includes decking from the front door to the standalone fully lined and insulated garage/sleepout. Fully fenced.  <b>Offers Over \$725,000   <a href="http://bbrealty.co.nz">#4101</a></b>  <b>JANINE GOLDSMITH AREINZ</b>  <b>Mob: 021 432 793</b></p>	<p><b>New Listing</b></p>  <p><b>OPEN HOME—SUNDAY 1.00—1.45pm</b>              18 Ocean View Rise, Ruakaka</p>	<p><b>EASY ON THE EYE—RUAKAKA</b>                  Such an easy layout, 3 bedrooms, 2 bathrooms with open plan living room, dining, and kitchen. Ranch sliders from dining area lead out to private West facing patio, perfect for summer BBQ's. Tucked away down a right of way in a great neighbourhood walking distance to shops.  <b>Offers Over \$875,000   <a href="http://bbrealty.co.nz">#4100</a></b>  <b>JANINE GOLDSMITH AREINZ</b>  <b>Mob: 021 432 793</b></p>
<p><b>OPEN HOME—SUNDAY 12.00—12.45pm</b>              26 Marsden Point Road, Ruakaka</p>	<p><b>BEACHPAD OF A BYGONE ERA</b>                  What an awesome coastal getaway! Easy to maintain section with 1940s three-bedroom character home and extra garage space for beach toys and for friends and family to stay over the summer months. Close to the surf beach, campground &amp; dairy.  <b>Set Date of Sale—Closes 3rd May 2022</b>  <b><a href="http://bbrealty.co.nz">#4098</a></b>  <b>FRANCIE STOKES</b>  <b>Mob: 022 656 0165</b></p>	<p><b>New Listing</b></p> 	<p><b>RUAWAI RENOVATOR —REAP THE REWARDS!</b>                  Great location walking distance to Ruawai township, this 1960's home has heaps of potential. Solid with 3 bedrooms, 1 bathroom &amp; beautiful native timber floors. Needs some work to bring it back to life but for this price you must be onto a winner.  <b>Offers Over \$300,000   <a href="http://bbrealty.co.nz">#4102</a></b>  <b>JOANNE DEWSON AREINZ</b>  <b>Mob: 021 780 622</b></p>
	<p><b>EASY LIVING / INVESTMENT—WAIPU</b>                  Enjoy the privacy &amp; location of this near new 3 bedroom, 2 bathroom A1 Home. Situated at the end of a cul-de-sac with walkways to Waipu Township or river's edge. A sunny deck, generous backyard &amp; plenty of off-street parking.  <b>Price by Negotiation</b>  <b><a href="http://bbrealty.co.nz">#4094</a></b>  <b>FIONA SOUTHRN MNZM</b>  <b>Mob: 021 317 775</b></p>		<p><b>NO BUILDING COVENANTS!</b></p> <ul style="list-style-type: none"> <li>• 651m<sup>2</sup> Section—Ruakaka</li> <li>• Mature trees &amp; enough space for more gardens.</li> <li>• Raised buffer between road &amp; driveway.</li> <li>• Close to Ruakaka Town Centre &amp; beach.</li> </ul> <p><b>NEW PRICE Asking \$399,000</b>  <b><a href="http://bbrealty.co.nz">#4096</a></b>  <b>FRANCIE STOKES</b>  <b>Mob: 022 656 0165</b></p>