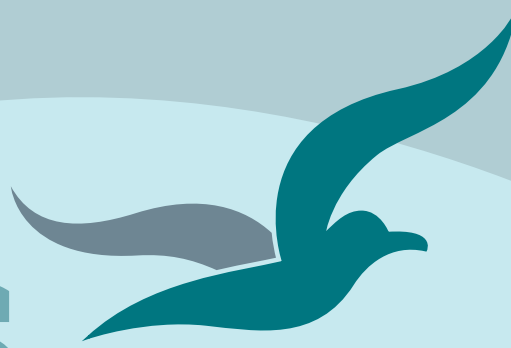


# Bream Bay News



Est.1967 | Locally owned and operated | Delivered FREE twice a month 6 June 2024

## Affordable Quality

- \* SECURITY DOORS
- \* INSECT SCREENS
- \* SHOWER DOORS
- \* BLINDS
- \* AWNINGS
- \* WARDROBE SYSTEMS

[www.homeplus.co.nz](http://www.homeplus.co.nz)



34 Albert St  
Whangārei

Est. 1977

PH: 438 9452

[whangarei@homeplus.co.nz](mailto:whangarei@homeplus.co.nz)

## A bypass pipeline to prevent sewage overflows

A CCTV condition assessment of the wastewater pipes in the Kepa Rd area of Ruakaka have shown that some of the pipes are collapsing and the Whangarei District Council is undertaking geotechnical investigations to better understand why this is happening.

In response to a series of questions and requests sent to the Council by the Ruakaka Residents and Ratepayers Association secretary Richard Morris, Simon Charles, the Council's Waste and Drainage Manager said, the Council's design standards require pipes to have a design life of 100 years. The Kepa Rd. pipes are only around 60 years old so are failing prematurely.

Mr. Charles said, "Please be assured that nobody at WDC wants spills of this nature to happen and we are working as fast as we can, while keeping the public, our staff and contractors safe, to come up with a solution. He explained that it is a complex issue owing to "a very deep pipeline and manholes, a high groundwater table, flowable sand, having to work around existing structures, environmental and health and safety considerations.

A council working group had been formed to come up with a lasting solution." Nothing had yet been confirmed however a preferred option is for a single new pipeline to be installed running through the middle of the Kepa Rd. industrial area to Sime Rd.

In the meantime a temporary bypass pipeline has been installed under the road with a pump to move wastewater from an upstream manhole to a downstream

*Continued on page 4*

## Long drawn out highway closure stifling farm park development plans



Ian and Cindy Fox, the developers of Waipu Caves Farm Park

As the Brynderwyn closure stretches on, Cindy and Ian Fox, the developers of the Waipu Caves Farm Park are finding it hard to push on with their plans. Ian said, they had a sudden drop off tourist and family group customers by around 80% the day the road closed back in February. The news that it would

remain closed for an additional two months was not welcome.

Waipu Caves Farm Park was opened in February 2023 and already offers guided tours of a glowworm cave, camping, tramping, rock climbing and friendly

*Continued on page 3*



## Waipu - Waipu Cove

4 2 2 2 3

Price by Negotiation

Christine Birss 027 235 4323 [christine.birss@bayleys.co.nz](mailto:christine.birss@bayleys.co.nz)  
MACKYS REAL ESTATE LTD, BAYLEYS, LICENSED UNDER THE REA ACT 2008

### Panoramic views in a special offering

Enjoy watching the waves break on the shore of River mouth, at north end of Waipu Cove beach plus the huge seascape from Bream Head and south to Little Barrier.

Kitchen is truly worthy of the title "an entertainers kitchen", as it includes a large butlers pantry. Large covered decks offer easy flow from open plan living areas. Sheltered courtyard for veggie garden, maybe even kids trampoline. Take your kayak down the walkway to river, or just wander for a swim or picnic. So many benefits here

Expansive views. Large modern easy care single level home.

[bayleys.co.nz/1153207](http://bayleys.co.nz/1153207)



**EDITORIAL**

# Will the 50 new state homes redevelopment in Ruakākā go ahead?

There is a proviso on the Kāinga Ora website which describes the proposed build of 50 new state owned homes at the corner of Tiki Place, Peter Snell Rd and Taming St. in the Ruakākā village.

It reads “Please note: these are proposed plans which could change as we progress and in some cases the project may not proceed.”

I have been trying to get confirmation as to whether these homes will still be built from Kāinga Ora’s media manager to no avail. I think this is likely because the future of Kāinga Ora is uncertain.

A review undertaken by former National Government Prime Minister Sir Bill English found Kāinga Ora was not delivering value for money. This can be disputed, as, although the agency’s debt rose to \$12.3 billion from \$2.7 billion between 2018 and 2023, its assets grew substantially more, from \$26.7 billion to \$45 billion over this period.

The Kāinga Ora review cost \$274,000, which was taken out of an urgent housing fund, used to help people who have nowhere to live. It was just 37 pages long and did not address comments made by the Kāinga Ora board, which pointed out: some of its conclusions were based on anecdotal evidence and were incorrect, that the Kāinga Ora ( with all those newly built houses) had very strong current and projected rental flows and how, over time, as the backlog of needed state homes was addressed, the debt situation was predicted to improve dramatically. You have to ask if the Sir Bill English Kāinga Ora review was “ value for money?”

When the Ruakākā project was first given a public airing in 2022, I asked Te Tai Tokerau’s Kāinga Ora’s Regional Director Jeff Murray whether it was guaranteed to go ahead if New Zealand had a change of Government. He told me that funding for the housing agency was assured until 2025 but time is now running out.

It’s been a difficult time for the occupants of the houses, which would need to be demolished to make way for the new builds. They have all been offered new homes in the development and efforts have been made by Kāinga Ora staff to find alternative homes while the build is underway. Some have moved into the six new Kāinga Ora homes built at the racecourse end of Peter Snell Rd.

I was impressed with the Kāinga Ora staff that worked on this project. I believe had a genuine desire to provide safe, warm dry homes for people who desperately needed them. They faced a lot of opposition but demonstrated courtesy and empathy towards everyone involved.

Bream Bay Police have reported a sharp rise in *Family Harm* incidents in the past few weeks. Sergeant Matt Nicholas surmises this might be due to people having to stay indoors together as the weather gets colder. When many people are sharing the same small overcrowded home, tensions are bound to develop.

Kāinga Ora staff held several information days on the proposed 50 new home development at the Bream Bay Trust. While people came along with concerns about such a large social housing development in Ruakākā, there were many more enquiries from people asking to be considered as tenants in the new homes. Those fifty new homes are desperately needed.

*Marilyn*

**HAMMER HARDWARE**  
It's your local

For all your Household Needs, DIY and Gardening Supplies, Fencing Equipment, Plumbing & Electrical Fittings.

**Cookware sale on now!**

**OPEN 7 DAYS** Monday - Friday 8:00am - 5:00pm  
Saturday 8.00am - 4.00pm | Sunday 9:00am - 3:00pm  
Public Holidays 9:00am - 3:00pm

Waipu Hammer Hardware | 35 the Centre, Waipu | 09 432 0292

**Camp Waipu Cove**

**A great place for a winter holiday!**

*Kids love our new jumping pillow*

**Book now: [www.campwaipucove.com](http://www.campwaipucove.com)**  
**Phone 09 432 0410**

NET ZERO CARBON  
eKOS

**PUANGA MATARIKI Festival**

Whangārei Takiwā  
**Arohātia!**

**HARATUA - PIPIRI 2024**

Whangarei District Council

**A series of cultural events from 31 May to 30 June for people to come and celebrate together**

For more information visit [www.wdc.govt.nz/Events](http://www.wdc.govt.nz/Events) **Matariki Festival Whangarei**

# Highway closure stifling farm park development plans

*Continued from page 1*

animals to meet.

But Ian estimates the road closure has cost his business at least \$200,000 in lost income, added expenses and short-term opportunities.

“We have reduced staff numbers (beyond the necessary seasonal reduction) and put several infrastructure development projects on hold. These developments would have led

to future income opportunities this coming summer. It has also stuffed up financing

opportunities for future growth. As a result, this poorly strategized road closure will take years to recover from.”

He said the Waipu Farm Park is particularly affected by the highway closure as the detour routes around the East coast roads through Mangawhai to Waipu township takes vehicles back out onto the state highway North of Waipu township and North of Shoemaker Rd. which is the road most people drive to the Waipu Caves Park.

Also the detour to the West around the Brynderwyns brings travellers back to SH1 about 15km north of the farm park.

“Only a small number of travelers come back southwards down to us.”

Cindy and Ian want to build cabins to cater for school camps, to develop a tree top adventure area, build mountain bike trails and improve the park’s roading network.

But the drop in income has made it difficult to get bank finance for developments.

Ian said, “When a business wants to borrow money from a bank the bank will require the profit and loss statements for the period they are in and the set of accounts for the previous year or two. The loss of sales income due to the current road closure will, for many business people, will stop them getting financed.

“Banks will not care about an excuse like, ‘my sales were low in the first half of 2024 calendar year because the government stopped my customers coming to me by closing the state highway for five months’.

Since starting to build the park on 320 acres amongst limestone outcrops and native bush off Waipu Caves Rd. in February 2018 they have had to cope with 2-3 years of pandemic related issues. They experienced delays in obtaining resource consents and when they tried to open for Christmas 2022 along came the “summer from hell” with endless rain, cyclone Gabrielle and other storm events. The park finally opened on 25 February 2023 on the day of torrential rain with many roads flooded and bridges washed out.

Cindy and Ian are resilient people and despite all this adversity they are still there inviting visitors to their farm dreaming up exciting plans for new visitor facilities

Ian said they might have to bypass the banks and fund the planned developments themselves from earnings, which will delay things by a year or two not an easy pill to swallow for these entrepreneurs

# Their last market



Judy and Graham Boulton

Judy and Graham Boulton are stepping down as organisers of the big Waipu long weekend street and park markets, a job they have done for the past eight years.

Under their watch the market has grown in size and popularity peaking with 210 stalls at the Anniversary Weekend Market earlier this year.

Last Sunday 2 June, although in winter and with the highway over the Brynderwyn Hill still closed, the market had 170 stalls.

Graham said he is pleased the market has been able to attract crowds of people from around Northland and beyond into Waipu to the benefit of local retailers and small businesses here.

Over those eight years he and Judy have enjoyed working with stallholders, providing them with the opportunity to launch various business ventures.

They have also supported local community groups by offering them free stall space to sell raffle tickets and raise funds for their various causes. Ten community fund raising stalls were set up at last Sunday’s Kings Birthday market. These included: the Waipu to Waipu Cove Cycle and Walkway Trust, Men in Kilts rugby, the Bream Bay College band the Panimals fundraising for a trip to Australia, the Waipu Menzshed and the Under 11s Waipu Rugby team.

Elijah Purnell and his partner Michaela Ling are taking over from Judy and Graham.

Graham said it is good to have some young enthusiastic people on the job. He thinks the market could expand and develop as a festival but that he doesn’t have the energy to bring this about.

“We have enjoyed those past eight years but each market takes around three months of work so we are glad to be handing over.”

**Phone the BREAM BAY NEWS - 027 432 0070  
or email:breambaynews@xtra.co.nz  
if you know of something interesting going on in Bream Bay.**



**PROUDLY SUPPORTING  
OUR LOCAL COMMUNITY**

**TEAM JAMES ALEXANDER | 021 878 178**

Licensee Salespersons. Ray White Bream Bay & Waipu.  
The Real Estate Shop Limited. Licensed (REAA 2008)



# \$500

Team James Alexander will donate \$500  
to the Waipu Cycle and Walkway  
from every Waipu property sale\*

\*The property must go unconditional during the promotion period (01 Jun 2024 and 24 Dec 2024 or until the fundraising is completed, whichever comes first). Terms and conditions apply. Contact James Alexander for more information.

## Puanga Matariki – a celebration for all



There are many reasons I'm proud to call Whangārei home. The naturally beautiful spots, the easy access to beaches and mountains, the better than average commute times (compared with our largest neighbour!) and our world-class, award winning cafes and restaurants – there's just so much to love about living here.

My biggest reason for living in Whangārei is the wonderful, diverse, caring and welcoming people that we have here.

On Friday 17 May, I was honoured to co-sign our Council's 'Welcoming Communities' Statement of Commitment, alongside Sergeant Stainton from NZ Police, Sandra Hawken Chair of Te Huinga, Sandeep Diwan Vice Chairperson Multicultural Whangārei, Simon Weston CEO of Whangarei District Council and Ralph Correa President of the Multi Ethnic Collective.

Welcoming Communities is a programme led by Immigration New Zealand (INZ) in partnership with the Ministry of Ethnic Communities and the Human Rights Commission and brings together local governments and communities to make the places we love more welcoming for everyone. I'm proud to say that Whangārei District has now achieved our first stage in this programme, which has the intention of helping people of all cultures and backgrounds feel included, listened to, well-informed and above all else, welcomed.

This inclusive, welcoming spirit will be present in the celebration of Puanga Matariki, which runs through the month of June, beginning on 31 May. Puanga Matariki gives us all the opportunity to come together as a community, reflecting on past events, celebrating the highs and looking ahead to our shared future.

This year, our District is hosting more than 40 events as part of the Puanga Matariki Festival. Our Council is proud to support Ruakākā's 'Te Urumatariki', a free drive-in movie night at the Ruakaka Racecourse celebrating waka and voyaging. Te Urumatariki is named after a Patuharakeke tupuna and translates to mean 'the entering of a new phase'. This event also celebrates the launching of Te Kauika o Patuharakeke Waka Ama Club.

Event stalls open at 4pm and the movie starts at 5.30pm with free kai and popcorn for the kids.

The Waipū Puanga Matariki Celebration will be another popular event and is being held on Friday 28 June from 4-9pm at the Waipū Celtic Barn. You'll be treated to special guest speaker Joby Hopa from Hātea Kapa Haka, flax flower making for tamariki and the whole whānau, a Matariki colouring competition and a hangi fundraiser for Takahiwai Rugby League.

This year we're also embracing our Latin American community as they celebrate the June solstice, which honours the traditional beginning of their new year. The Whangārei Latin American Festival will bring the sights, sounds and flavours of Latin America right here to our doorstep, and is a perfect inclusion in our Puanga Matariki line up of events.

Many of the events this year are family friendly, free and accessible, so pick up a booklet from our council customer service centres, libraries, isite or go to our Whangarei District Council website <https://www.wdc.govt.nz/Matariki> and get ready to have a culturally exciting month. I'll see you there!

*Vince Cocurullo  
Mayor of Whangarei*

## At the Waipu Kings Birthday market



Therese Apatu, visiting from Levin, paid \$50 to have her portrait drawn by Emil from Bulgaria who held a stall at the Waipu Kings Birthday Market on Sunday 2 June.



Angela Stolwert and Jan Francis selling raffle tickets to raise money for the Waipu to Waipu Cove Trail

The Waipu Cycle and Walkway Trust held a stall selling raffle tickets to raise funds and publicity to help complete the Waipu to Waipu Cove Cycle and Walkway. The Waipu Cycle and Walkway Group needs to raise an additional \$200,000 to complete the trail as far as the Waipu Cemetery from where the Whangārei District Council has agreed to build the section around the Riverview Place corner to join up with the trail leading out of Waipu.

Donations can be made on the Waipu to Waipu Cove Cycle and Walkway website or in person at the Waipu Boutique Sunday Market on 9 June where Waipu Cycle and Walkway representatives will be present raising publicity for the cause and selling tickets to another raffle.

## A bypass pipeline to prevent sewage overflows

*Continued from page 1*

manhole to avoid the damaged section of pipe.

Sensors have been installed to alert Council staff to high levels in the manhole which may result from unexpected pump failure (for example from blocking up with sand or unexpected mechanical failure) so that they can immediately respond before wastewater spills from the top of the manhole.

## The Bream Bay News

is published by Bream Bay News Ltd. Address : RD 2, Waipu  
Phone: 027 432 0070

E-mail: [breambaynews@xtra.co.nz](mailto:breambaynews@xtra.co.nz)

Website: [www.breambaynews.co.nz](http://www.breambaynews.co.nz)

Editor - Marilyn Cox. Accounts - Susan McRae.

Technical assistance - Geoff Spencer

Advertising design and website maintenance - Megan Lea.

Printed by NZME

We distribute 6000 copies twice a month in Ruakaka, One Tree Point, Waipu, Mangawhai and Maungaturoto

# No more flexible safety barriers



Safety barriers already installed on the highway at Ruakākā

It is unlikely we will see any more flexible safety barriers go in on the stretch of State Highway One between Ruakākā and Wellsford in the near future.

The government has cut the funding for this road safety project from \$45million to \$10 million saying it will redirect the funds to “lower cost safety refits in high risk areas” and towards road improvements such as accelerating four-laning of the motorway from Wellsford to Whangārei as part of the Roads of National Significance initiative.”

Will this also mean the proposed roundabout at Nova Scotia Rd. State Highway One intersection, which was widely consulted on with Waipu residents will not be built?

Asked about this a Waka Kotahi spokesperson said, “The Government Policy Statement on Land Transport (GPS) is due to be finalised in the coming months and includes expectations for NZTA to deliver safety improvements via the Roads of National Significance, enhanced maintenance and other priority safety projects that focus on high risk locations.

A high-level summary of NZTA’s position, including potential funding options and proposed delivery timeframes, for each of the RoNS was signaled in the State Highway Investment Proposal (SHIP) released publicly on 12 April 2024.

Once the GPS is finalised, it will inform decision-making for the next 2024-27 National Land Transport Programme (NLTP), which will confirm the project priority and funding. We expect the NLTP to be adopted in late August.

These steps must be completed before NZTA can comment specifically on where individual projects may or may not sit within future planning and funding.

Once the GPS is finalised, NZTA will provide further advice on how it intends to deliver against the Government’s expectations and priorities in the lead up to adopting the NLTP.

In April 2024 Waka Kotahi published a State Highway Investment proposal 2024 to 2034. To quote from this document “Our primary safety investment in Northland will

be through the new Roads of National Significance and through our maintenance programme. The GPS - Government Policy Statement directs that these new roads “will be four lane, grade separated highways.” A new road bypassing the Brynderwyn Hill and a road between Whangārei and Port Marsden are listed as roads of national significance.”

Neither of these will solve Waipu’s dangerous intersection problem.

The State High Investment Proposal does also state, “Over the next three years we’ll roll out lower cost, value for money safety improvements on the state highway network. These will include the delivery of safety retrofits in high-risk corridors and intersections, and speed limit changes focused on areas of high safety concern.”

So perhaps we will see some safety upgrades here – just not the ones we had explained to us at multiple meetings, discussed and wrote submissions on.

**BREAM BAY  
CURTAINS  
AND BLINDS**  
(INDOOR AND OUTDOOR)  
**AND SHUTTERS**

PH 0204 632 432  
FOR A FREE IN HOME  
CONSULTATION  
CALL SUE

[www.breambaycurtainsandblinds.com](http://www.breambaycurtainsandblinds.com)  
[bbcurtainsandblinds@gmail.com](mailto:bbcurtainsandblinds@gmail.com)

CALL SUE TODAY

0204 632 432

**BIG RED**

TRUCKING

Owner /Operator Duncan Mackay

**GENERAL CARTAGE SERVICE**  
Metal / Topsoil / Sand / Manure / Hay / Silage

---

**WATER**  
Prompt Delivery And Reliable Service.  
Healthboard Approved Drinking Water Carrier.

Call 021 070 8211

18 sales  
in  
18 weeks

RESULTS THAT MOVE YOU

\*Based on sales made by Team James Alexander between 15 Jan 2024 and 15 May 2024.

TEAM JAMES ALEXANDER  
021 878 178

Licensee Salespersons. Ray White Bream Bay & Waipu.  
The Real Estate Shop Limited. Licensed (REAA 2008)

**BREAM BAY STORAGE**  
 INSIDE/OUTSIDE storage at 50 Cove Rd., Waipu  
 Free phone. 0800 432 135  
 enquiry@breambaystorage.co.nz  
 www.breambaystorage.co.nz

**RUAKAKA SAFE STORAGE**  
 99 MARSDEN PT ROAD, RUAKAKA  
 92 Units from 6 x 3 to 1 x 1  
 Each unit individually alarmed and monitored  
 Electrified security fence  
 Ph. 0508 273 262 or 0275 310 788  
 CLEAN - DRY - SECURE

## Three new picnic tables for the Waihoihoi Park



Waipu Menzshed members have made three new picnic tables for the Waihoihoi Park. The tables are big enough for a large family to sit around, measuring more the two metres in length and 80 cm width. The planks they are built out of are 70mm thick so the tables take a bit of lifting. The tables will go around the skate park and the proposed new half court. Waipu 2000 commissioned the tables and is paying for the timber, construction and installation. Waipu 2,000 was formed leading up to the celebrations of the bi-millennium and has remained as an organisation working for the betterment of Waipu

## Funding needed to build a new Menzshed

The groundwork has been completed for the new Waipu Menzshed building which will be built on Whangārei District Council land at the back of the new carpark on The Braigh in front of the Saorsa retirement village. Menzshed president Gordon Walker said thanks to Mountfield Quarry, which lent the group a big 10 tonne digger they were able to do this work themselves. Gordon said amongst the Menzshed membership there are many skills and one member was able to jump on the digger and do the necessary excavation work. The project has hit one snag though with the Council now requiring that the building be designed to a standard for use by the general public, which has meant new design work, a new quotation of building costs and a resubmission of the application for a building

permit.

With these revised figures, Waipu Menzshed is now making applications to funding agencies and calling for donations to help with the build.

The Waipu Menzshed currently meets each Tuesday in the original Waipu Hall and former Masonic Lodge in the Waipu Museum's Historic Precinct but last year was given notice by the Museum board to vacate this building by May 2024. The museum board has now extended the Menzshed's occupancy until November 2024.

With the inclusion of a group of women, who meet in the shed to learn and practice woodwork skills on Fridays the Waipu Menzshed currently boasts a membership of 53.

**DOES YOUR SPORT CLUB NEED FUNDING?**  
 BREAM BAY SPORTS TRUST INVITES  
**ALL BREAM BAY SPORTS CLUBS/GROUPS TO A FUNDING NETWORKING EVENT**  
 THURSDAY 4 JULY 2024 AT THE WAIPU GOLF CLUB

**5.30pm to 6.00pm** **Networking**  
**Meet the BBST committee**  
 Nibbles provided and cash bar available

**6.00pm to 6.45pm** **Seeking funding?**  
 Brad Flower, is a Board Member/Club Administrator for the Kamo Soccer Club. Brad has been involved in funding applications, fundraising and sponsorship for over 30 years. Brad will share his knowledge on applying for funding.

**6.45pm to 7.30pm** **Community Funding**  
 Zane Davis and Paora Simon, Sport Northland will provide an insight into what support they offer to sports clubs and what funding and grants are available.

**7.30pm to 7.45pm** **Seeking sponsorship?**  
 Craig Nisbett, Atlas Concrete will provide insight into what sponsors would like to hear from groups when they are seeking sponsorship.

RSVP by 20 June to info@breambaysportstrust.co.nz

**Northpower Mangawhai Substation Open Day**  
 Sunday 23 June, 10am to 3pm  
 Eagle Ray Road, Mangawhai (along from Bunnings & New World)

See the inside of our new substation. Speak to Northpower staff. Learn about how a substation works and what this asset means for the Mangawhai area.

Free entry    Coffee van onsite    Activities & games



# Many hands at work on the Waipu River Walk

Photo and text by Ruby Mitchell



The saying many hands make light work was true for a recent Waipu River Walk working bee. Around 15 community volunteers of all ages came together last Saturday to get new plants in the ground and tame weeds. The great turn out and nice weather meant the crew got a large section just along from the cattleyard planted out with an array of native plants (propagated locally by Waipu Waters community nursery). The area had until recently been overrun with kikuyu. Areas that had been planted out previously were given a weed and a tidy up. The walk remains closed while work continues on track and stormwater improvements

**LANDSCAPING NORTHLAND**  
John Timmins (JT)  
Bream Bay Area

- **TIMBER WORK:** Pergolas & Privacy Screens, Raised Beds, Sleepers, Edging etc.
- **HARD LANDSCAPING:** Paving & Stepping Stones, Permeable Paths, Riverstone etc.
- **GREEN SERVICES:** Plants & Mulch, Garden Creations, Tree Trimming

Ph: John (JT) 021 046 5956  
Email: the\_snimmits@hotmail.com

## Ruakaka Stationery & Gifts



**Ruakaka Town Centre**  
Shop local for all your needs:  
Stationery, Books, Toys, Magazines  
Greeting Cards, Clothing,  
Gifts & Souvenirs

**Phone 432 8104**



**Open Saturday until 7pm.**

**Inspire | New Zealand REAL ESTATE** For Sale \$1,590,000

**37 COTTON LANE, MANGAWHAI**

**PROPERTY FEATURES:** 3 Bedrooms, 3 Bathrooms, 1300sqm (Semi-rural), 1000sqm (Semi-rural), 3 Storage

**FOR SALE**

**ABOUT:** Situated in the 'Lake View Estate' - Elegant home with open plan living, modern kitchen & ensuite, extra family room & additional office, 2 modern bathrooms, spacious deck with glass balustrade, enclosed driveway surrounding area, attached double garage & 3 bay shed

**Carleen Still**  
Licensed REAA 2008  
021 148 9804  
carleen@inspireproperty.co.nz  
www.inspireproperty.co.nz

**Inspire | New Zealand REAL ESTATE** For Sale \$1,650,000

**13 LAYCI LANE, WAIPU**

**PROPERTY FEATURES:** 3 Bedrooms, 3 Bathrooms, 2622sqm (Semi-rural), 1000sqm (Semi-rural), 3 Storage

**FOR SALE**

**ABOUT:** The Home Cares for the soul! Discover the epitome of living in this bespoke home with a spacious open plan living & dining area.

- Butler's pantry | Inclusion hobs | 2 wet rooms
- Second lounge | 3rd living room
- 3 front patios
- Copious wood with a built in bar
- Close to 18th hole, White Cove & Little Beach

**Carleen Still**  
Licensed REAA 2008  
021 148 9804  
carleen@inspireproperty.co.nz  
www.inspireproperty.co.nz

**Inspire | New Zealand REAL ESTATE** Enquiries Over \$880,000

**19 ORMISTON RD, SPRINGFIELD**

**PROPERTY FEATURES:** 4 Bedrooms, 2 Bathrooms, 983sqm (Semi-rural), 1800sqm (Semi-rural), 1000sqm (Semi-rural), 3 Storage

**FOR SALE**

**ABOUT:** "Head of the City Line" - Then Move to the Country!

- 1 x 1000sqm water tank
- Double carport
- Close to open fields, golf, country club & park with storage available under the house
- Air-conditioned family room
- Excellent quality
- Approx. 10 mins to Ashburton CBD

**Carleen Still**  
Licensed REAA 2008  
021 148 9804  
carleen@inspireproperty.co.nz  
www.inspireproperty.co.nz

**UNDER CONTRACT**

**3 HOLLAND RD, SPRINGFIELD**

**PROPERTY FEATURES:** 4 Bedrooms, 1 Bathroom, 177sqm (Semi-rural), 1870sqm (Semi-rural), 1 Storage, 1 Shed

**FOR SALE**

**ABOUT:** Ideal introduction to lifestyle living or perfect for those wanting to commute from the farm the "ranch" home!

- Extra large deck for entertaining
- 9 x 12 m shed with 2.4 m air stud
- Additional family room
- Heat transfer system & wood burner
- Fine wooden floors
- Complete lawn/breakfast bar

**Carleen Still**  
Licensed REAA 2008  
021 148 9804  
carleen@inspireproperty.co.nz  
www.inspireproperty.co.nz

**Inspire | New Zealand REAL ESTATE**

Looking for Someone Who Cares?  
Call Me!

Top Quality Service,  
Competitive Marketing,  
& Attractive Commission Rates!

**Carleen Still**  
Licensed Salesperson - REAA 2008  
M - (021) 148 9804  
E - carleen@inspireproperty.co.nz

**Inspire | New Zealand REAL ESTATE** SOLD

**8 SINSELY ROAD, WAIPU**

**PROPERTY FEATURES:** 3 Bedrooms, 1 Bathroom, 123sqm (Semi-rural), 837sqm (Semi-rural), 1 Garage

**FOR SALE**

**ABOUT:** Discover the hidden gem with this quiet home. Ideal for investors or DIY enthusiasts looking to add value.

- Separate security
- No overheads
- Town water & sewage
- Walking distance to Waipu Village
- Offroad "3.5 x 0.5m x 2"

**Carleen Still**  
Licensed REAA 2008  
021 148 9804  
carleen@inspireproperty.co.nz  
www.inspireproperty.co.nz

**Inspire | New Zealand REAL ESTATE** SOLD

**8 BERNADEOC CRESCENT, WAIPU**

**PROPERTY FEATURES:** 3 Bedrooms, 1 Bathroom, 164sqm (Semi-rural), 600sqm (Semi-rural), 1 Double Garage

**FOR SALE**

**ABOUT:** No one can tell how many or how often with a double attached garage.

- New Carpet & New Flooring
- New Pumps
- Double Bottom Appliances
- Airplan Security
- Open Plan Living, Lounge, Kitchen
- 100sqm Shedding - (Shedded)

**Carleen Still**  
Licensed REAA 2008  
021 148 9804  
carleen@inspireproperty.co.nz  
www.inspireproperty.co.nz

As seen on Grand Designs 2019







**0274 320 007**

REGISTERED MASTER BUILDER    QUALIFIED TRADESMAN CARPENTERS    MARCUS@CCP.NZ    WWW.CCP.CO.NZ

## Northland emergency services and regional sports facilities fund remain after a flood of submissions in support

The Northland Regional Council will continue to fund emergency services and regional sporting facilities after the vast majority (more than 90%) of the 2,300 submissions it received on its proposed Long Term Plan were opposed to these grants being discontinued.

Chairman Geoff Crawford said, “The feedback from our communities has been loud and clear – people want to see the rates we have in place to support emergency services and regional sporting facilities to continue – and we’ve listened.”

He said councillors have acknowledged that both these rates are “effectively a form of fundraising and an administrative service on behalf of the community.

“This funding for ‘community good’ is quite separate from the core work we do as a regional council, and I think it needs to be viewed as such.”

“We’ve agreed to continue acting as fundraisers via these two rates, which will cost ratepayers about \$27.65 a year, and will keep looking at whether there are better ways these community services can be supported into the future.”

Councillors also opted to change the name of the rate used to collect the funds for

emergency service to the Regional Rescue Services Rate, to avoid confusion with its Emergency and Hazard Management Rate, collected for civil defence and hazard management.

The NRC’s total rate rise for the coming year will be 16.18% or \$84.70 for the annual rates bill.

Councillors are due to adopt the Long Term Plan, confirming the rate rise at their June meeting.

**Phone the BREAM BAY NEWS - 027 432 0070  
or email:breambaynews@xtra.co.nz  
if you know of something interesting going on in  
Bream Bay.**

## Waipu on Ice



**ICE SKATING at the CELTIC BARN WAIPU**  
 June 28 to June 30  
 For session times and bookings :  
<https://www.trybooking.com/nz/RRF>

Brought to you by 

...We're loving it!



## Gala dinner to mark 50 years of football in Bream Bay

Bream Bay United will be holding a gala dinner at the Waipu Celtic Barn on the evening of Saturday 27 July from 6pm to celebrate its 50th anniversary.

Tickets are available to everyone and can be purchased on Event Finda . Look for: breambayunited50thanniversarygala dinner

Photos and memorabilia from the past and present will be on display. There will be canapes and drinks with a full buffet dinner, some speeches from club luminaries and a performance from local covers band, Run for Cover.

Doors will open at 6pm and the dress code is formal.

# MAGIC TYRES

## Large selection of used & new tyres Car & Trailer Rims

Ph. 438 3534      103 Port Rd., Whangarei

# From the files of the Bream Bay News

**“Wanted some willing helpers to try and get a soccer club formed for the Ruakaka / Waipu area”**

In November 1974 there was a notice in the Bream Bay News under the heading Put Bream Bay on the Map! SOCCER . Wanted: - Some willing helpers who would like to try and get a SOCCER CLUB formed for the Ruakaka Waipu area. Please phone 513 Ruk. if interested.

There was no further mention of the new club until February 1975 when there appeared the notices –

“ *Bream Bay United Association Football Club has been formed to further the interests of soccer in this area. Club President: R. Hamilton, Sec. Mrs. A Picketts, Tres. G Crawley. Senior grades meet Thursday evening 7pm and junior grades meet at 10.30am Saturdays at the Marsden Power Station. The committee wishes to thank all who gave towards the bottle drive. If*

*your house was missed and you have bottles to be collected please phone Sec. 513.Ruk.”*

Further on in the same issue was another notice headed: Bream Bay Assn. Football Club *Bring the family for a fun afternoon out. Watch Marsden Village Women’s Soccer team beat the men’s senior team in a fund raising match Sunday 2nd March at 1pm at the Power Station. Cake stall: soft drinks, Curtain raisers: Rovers v Bream B. United midgets and Onerahi v Northern United Juniors. Tony Picketts who with his late wife Ann was one of the club’s founders recalls that like himself those who started the club “were all poms,” many of whom had come to Ruakākā to help build the Mars-*



An early Bream Bay United junior teams with all the players fitted out in the club’s maroon colours and the goalie with a yellow jersey.

den Power stations or to work at the Marsden Point Refinery.

“Of course we all played soccer not that rough game rugby.”

Practices and games were held at the Power Station – where the NIWA Aquaculture Research centre now operates and Tony remembers driving around on bottle drives and other fund raising activities to help buy equipment and uniforms. He was surprised and pleased to learn that the club now has 300 players and two new football fields alongside the Ruakākā Recreation Centre.

**WHITTAKERS**  
funeral home

**09 988 9049**  
whittakersfunerals.co.nz | admin@whittakersfunerals.co.nz  
25 Kepa Road Ruakaka 0171 | PO Box 241 Ruakaka 0151

**ATLAS**  
QUARRIES  
CONCRETE

Thinking concrete but don't know where to start?  
**Think Atlas Concrete**

- We quarry the aggregate
- We manufacture the concrete
- We site visit to advise the best options
- We give you the choice of mix and colours
- We give a choice of local placers for you to choose
- We manufacture concrete to your requirements
- We stand by our product, you stand on it

**Atlas Concrete**  
**Your First Call for Concrete**  
**Ph: 0800 888303 - Brynderwyn**  
**or 432 5030 - Ruakaka**

**Builders of Quality Family Homes**

**Huamanu 160sqm**  
**\$394,000 incl gst built on your site**  
Includes: plans, consent, kitchen, appliances, tinted double glazed windows, tiles, carpet, blinds, heatpump.

Wayne Pickerill  
Managing Director

“Hi, I’m Wayne Pickerill, Managing Director and Project Manager for your new Fowler Home. Enjoy quality and all the benefits of dealing with an efficient, low overhead, nationwide company, where I will take a personal interest and be involved through to completion.”

**FOWLER HOMES™**

More designs at [www.fowlerhomes.co.nz](http://www.fowlerhomes.co.nz) or visit our office at 63 Walton St, Whangarei. Phone Wayne Pickerill 438 4840

**MARSDEN POINT HIGH TIDES**

	AM		PM	
Thu 6 June	6.52	2.7	7.30	2.8
Fri 7 June	7.45	2.6	8.20	2.8
Sat 8 June	8.36	2.6	9.08	2.8
Sun 9 June	9.25	2.6	9.55	2.7
Mon 10 June	10.13	2.5	10.40	2.7
Tue 11 June	10.59	2.5	10.26	2.6
Wed 12 June	11.45	2.4	~	~
Thu 13 June	12.11	2.5	12.31	2.3
Fri 14 June	12.56	2.5	1.20	2.3
Sat 15 June	1.42	2.4	2.12	2.3
Sun 16 June	2.29	2.4	3.06	2.2
Mon 17 June	3.17	2.3	4.00	2.3
Tue 18 June	4.05	2.3	4.53	2.3
Wed 19 June	4.54	2.3	5.43	2.4
Thu 20 June	5.43	2.4	6.30	2.5
Fri 21 June	6.32	2.4	7.16	2.5



# Police Report

## A lead on the late night prowler

Police are looking into a lead regarding the identity of a prowler who has been reported late at night on residential properties in Ruakākā.

## But running out of leads on Sime Rd. suspected arsonists

Police are running out of leads as to the cause of the series of vegetation fires in Sime Rd. earlier this year. Sergeant Matt Nicholas said someone living in the far north was being interviewed in relation to the fires but if this doesn't yield results there are no more leads. The fires occurred earlier this year when weather conditions were very dry with a danger they could spread to the nearby residential area to the south or north onto the NIWA aquaculture research centre. Sergeant Nicholas said that one theory is that the fire were caused by thieves using grinders to extract copper from cables left on the former power station site.

## Fewer mental health callouts

Bream Bay Police attended only two mental health related incidents over the past fortnight, down on the number they have been called to in recent months.

## More accidents at Waipu one way bridge

Sergeant Nicholas said more minor accidents have occurred at the one land bridge just east of Waipu since Cove Rd. became the main bypass route with the highway over the Brynderwyn Hill closed. He is not sure why but thinks motorists stop abruptly when they see the stop go lights there and run into the back of vehicle ahead. He said the traffic management people are doing a good job there but for some reason the accidents keep occurring.

## Be careful on Gorge Rd

Sergeant Nicholas warns drivers to be careful about taking the Gorge Rd detour, which has deteriorated with all the use it is getting since the highway over the Brynderwyn Hill was closed in February. He said after rain the road becomes "a muddy slimy mess."

## Colder weather brings more family harm call outs

Bream Bay Police dealt with 14 family harm incidents over the fortnight to 31 May. This is a higher number than is usual which Sergeant Nicholas said might be due to the colder weather with people crammed up together in their homes. The incidents were mostly verbal arguments and none led to any arrests. "A Police presence was usually enough to de-escalate the situation.

### THE NEXT PUBLICATION DATE

of the Bream Bay News will be Thursday 6 June  
The deadline for all copy is 4pm on  
Wednesday 29 May



# RUAKĀKĀ CHARITY SHOP

North Haven Hospice is opening their new Ruakākā Charity shop with all proceeds going directly to the communities we care for.

**COMING JULY 2024!!**

*If you'd like to gift some of your time as a volunteer in our new processing centre and retail outlet, we'd love to hear from you!*

Please email [volunteer@northhavenhospice.org.nz](mailto:volunteer@northhavenhospice.org.nz)

Kaimahi Harley Birch chops up trees for firewood at Nichols Road, Mamaranui.



## Firewood to more than 100 whānau

**More than 100 low-income Northland whānau have received free firewood as part of an innovative programme to safely process trees blown over in Cyclone Gabrielle or threatening to fall in its wake.**

The \$6.5 million Ngā Manga Atawhai project has processed more than 2100 cubic metres of wood and 193 trees in a project bringing together councils, electricity providers, roading entities, and multiple government agencies to remove dangerous trees near roads, powerlines, and waterways.

The Northland Regional Council removed trees from 70 locations across 25 rivers around Northland and much of the on-the-ground work focusses on processing some of these.

Key to the programme has been the prior work of Enhanced Task Force Green (ETFG) with ETFG one of the largest projects run as part of the Cyclone Gabrielle Regional Recovery with 12 kaimahi (workers) from the Far North to the southern Kaipara.

Over the past 13 months, ETFG assisted a total of 120 farmers, clearing fences, making repairs, and

carrying out post-cyclone clean-up – but the majority of the work was dealing with hundreds of trees on properties that were blown over in the cyclone, or were threatening to fall.

Te Roroa led the on-the-ground delivery of ETFG and now leads Ngā Manga Atawhai, to make the most of the fallen trees.

The majority of the wood involved in these projects doesn't go to waste; it's processed and provided to low-income whānau as firewood to warm their homes. (Recipients of the free wood are identified through referrals from the community, Te Ha and Te Whatu Ora's Manawa Ora Healthy Homes Initiative.)

The ETFG component – funded by the Ministry of Social Development – officially came to a close recently, with a debrief and 'lessons learned' meeting late last month, and a whakawātea (formal closing) on-site north of Dargaville on Friday, 03 May.

The whakawātea featured mihi (speeches) of acknowledgement to the kaimahi by Te Roroa and Northland Civil Defence Emergency Management (CDEM), presenting specially-carved taonga made of local kauri wood.

The taonga were blessed by Northland CDEM's Iwi Engagement Advisor, Papanui Polamalu, and presented to the kaimahi by Kiritapu Demant, project manager at Te Roroa.



*Te Roroa's Kiritapu Demant presents kaimahi Hunter Shortcliffe with a kauri taonga in recognition of his work with Enhanced Task Force Green.*

As ETFG closes, the Ngā Manga Atawhai programme continues to go strong, supporting five ETFG kaimahi to now transition to work on the project.

The work is set to run indefinitely, allowing them to use the skills and training they have gained to continue to build Northland's resilience.



Want to receive the latest news from Northland Regional Council? Sign up: [www.nrc.govt.nz/subscriptions](http://www.nrc.govt.nz/subscriptions)

**Northland**  
REGIONAL COUNCIL   
Te Kaunihera ā rohe o Te Taitokerau



**STORAGE  
BREAM BAY**  
Moko Hinu Street, Ruakaka, 0118

**Shipping Containers**

20ft Shipping Containers,  
Hire offsite \$180 per month + GST + Delivery  
Minimum 3 months,

**SPECIAL**  
**1st month free for a minimum 6 month hire**  
20ft Containers @ Kepa Rd, \$280/m

Enquiries Ph 0212722739 / 021432701  
Email: storagebreambay@gmail.com  
www.storagebreambay.co.nz

**Bream Bay  
Garden Maintenance**

Landscaping · Planting · Raised Beds  
Decks · Hedges trimmed · Trees pruned  
Weed control · Section Tidy Up  
· Simple Building jobs·

Free Quotes

**NO JOB TOO SMALL**

One Offs, Weekly, Fortnightly or Monthly

**Phone Marcus 021 343 727**

**JUSTICES OF THE PEACE**



**Justices of the Peace**

<b>Ruakākā</b>	
Paea Paki	021 149 1625
Darrell Trigg	09 432 7256/021 332 901
Ken Orr	09 432 8215
Wayne Buckland	022 644 5376.
<b>One Tree Point</b>	
Jules Flight	0274 777 210
Sir John Goulter	021 612 442
MM Jolley	027 415 9486
Ian Bogue	0274 300 418
Grant Brown	027 248 7126
<b>Waipu</b>	
Trevor Vaile	021335 075
Doug Scott	027 229 9752
Ken Couper	027 292 0524
Angela Stolwerk	021 823 966
Chris Martin	027 367 2947
Mary Abercrombie	021 598467

Make contact with a Justice of the Peace (on any day) and make an appointment to have your documents completed.  
A service desk also operates 10am to 11am on Saturdays in the Ruakākā Library.

**Pat Fowler**  
17 June 1936 - 20 May 2024



Pat Fowler

One of Bream Bays most accomplished and dedicated sportswomen died last month in Whangārei Hospital. Pat Fowler had been an accomplished netballer, tennis and table tennis player in Auckland before moving to Waipu when her husband Fred bought the Waipu Hotel in 1965.

In 1967 she was talked into joining the Waipu Bowling Club and that year won both the Waipu and Northland first year's singles titles. She moved up to Russell when she and Fred purchased the Commodore Hotel there and later to Ohope for a short time. All the while Pat continued to bowl. She joined the Russell club becoming its secretary. Returning to Waipu in 1981 she became a member of the club's committee and match committee and was the Waipu delegate to the Northland Centre. In 1986 -1987 when Waipu's

Sheila Hodgson was the Northland Centre's President, Pat was secretary. She trained as an umpire and in 1988 was one of five women selected to officiate at the Women's World Bowls championships held in Henderson, Auckland. Then in 1990 she was chosen to be a Women's Bowls Umpire at the Auckland Commonwealth Games.

Pat was made a Life Member of the Waipu Golf Club in recognition for, in the words of her friend and fellow golfer Margaret Pennington, "doing just about everything at the club."

"When she first joined she got thrown into doing the catering. She re-sat her bar license to become bar manager (because of her experience running hotels). She was Women's Club Captain and served a term as treasurer. She helped with all the tournaments keeping the record cards and sorting the prizes.

Margaret said, "Pat loved her golf and was quite a good player but we gave her the nickname *Fair Weather Fowler*. If it was raining she wouldn't go out."

The keen interest in sport remained throughout her life. In her later years Pat was a judge for the Bream Bay Sports awards inviting the other judges to her home in Marsden Point Rd to discuss the merits of the candidates in the various categories.

Capable and organised to the end Pat left a note for her daughter Nicky Solomon with a list of things she would need to do upon her death such as cancel the Advocate.

The note was quite long and concluded "and I don't want to hear you calling me names when I can't answer back."

Fred, Pat's husband died in 1991 at the age of 76. As well as daughter Nicola they had a son Jeffrey who is also deceased.

As well as her daughter Pat is survived by two grandchildren and four great-grandchildren, all of whom she loved very much.



Pat, at bottom right, was one of five umpires to officiate at the 1990 Commonwealth Games in Auckland

# Concert in the Coronation Hall in preparation for World Choir Games



The Bream Bay Children's Choir – Te Korihi o te Tui (the chorus of the tui)

There will be a concert at the Waipu Coronation Hall on Sunday 16 June at 3pm showcasing two choirs preparing for the World Choir Games in Auckland in July. The Opera North Chamber Choir, drawing on singers from the Whangārei District and the Bream Bay Children's Choir – Te Korihi o te Tui (the chorus of the tui) are both conducted by Emma Couper of Waipu with Chris Townshend and Jeanie Arapahama helping with the junior choir.

Both choirs have been rehearsing together since last October, taking part in the Classics at the Cove concert last November.

The June 16 concert will also feature solo performances by Emer Lea and Kaiser Jacoby.

Prior to the Coronation Hall concert the two choirs will also sing for the residents of the Ranburn retirement complex.

Admission to the Waipu concert is \$5, payable at the door. The concert is free for school students and seniors.

The World Choir Games run from 10 – 20 July at multiple venues in central Auckland with visiting choirs from around the globe. It was established in 2000 and is the largest choral festival and competition in the world. This is the first time it has been held in New Zealand.

Local businesses sponsoring the Opera North and the Bream Bay Children's choirs are: Alpha Sound, Oliver Tuck Construction, Trigg Construction, Metalcraft Roofing, Kauri Coast Concrete, Ray White Bream Bay, Hue Creative, Lin Norris of Bayleys Real Estate and Christian Dally Photography.

## World Choir Games

# PERFORMANCE

WAIPU CORONATION HALL

**SUNDAY**  
**16 JUNE**  
**3PM**

**\$5 at the Door**

Opera North Chamber Choir  
Bream Bay Childrens Choir

Proudly sponsored by  
**BAYLEYS**  
Lin Norris - Country & Lifestyle  
Sales Specialist  
021 959 166

**ADULTS \$5 | SENIORS & SCHOOL STUDENTS FREE ENTRY**



The Opera North Chamber Choir

## Love being active?

### 24/7 gym

**9 Takutai Place Ruakaka Ph: 432 7962**

- no lock in contract, no admin, no joining fee
- \$10 per week
- Ladies only gym
- Unisex gym
- Casual gym \$2 per day

**Come and join us at the Ruakaka Recreation Centre**

Opening hours :  
Mon, Tues, Wed, Fri 8am to 2pm  
Thur 8am to 6pm

Lounge available for hire - up to 134 people  
Meeting room for hire - up to 15 people  
For events kitchen facility available

Very reasonable rates

Like us on facebook

Activities at the Ruakaka Recreation Centre			
Activity	Day and Time	Cost	Contact
Fit for life Ruakaka class	Monday 10am to 11am	\$5	AnnMarie 0211693115
Fit for life Ruakaka class	Wednesday 11am to 12pm	\$5	AnnMarie 0211693115
Gymnastic	Monday 4pm-5pm Rhythmic gymnasts		Fran breambaygym@gmail.com
Gymnastic	Monday 5pm-6pm Strength & flex for gymnasts		Fran breambaygym@gmail.com
Playgroup gymnastic	Tuesday 10.30am to 11.30 am		Fran breambaygym@gmail.com
Gymnastic	Tuesday 3pm Beginners & 4pm Experienced(5-8y) 5pm all Rec(8-12y)		Fran breambaygym@gmail.com
Preschool gymnastic classes	Thursday 1.30pm - 2pm	\$10 per session	Fran breambaygym@gmail.com
Homeschool all ages	Thursday 2pm - 2.45pm		Fran breambaygym@gmail.com
Recreational gymnastics	Thursday 3pm - 3.45pm, 4pm - 4.45pm for 5-8 years	\$15 per session	Fran breambaygym@gmail.com
Recreational gymnastics	Thursday 5pm - 6pm for 8 years +	\$15 per session	Fran breambaygym@gmail.com
Yoga	Thursday 6pm to 7pm	\$20 per session	Facebook:Shantishalayoga
Zumba Gold	Tuesday 9 am to 10 am	\$7	Roz rozhzumba@gmail.com
Zumba Gold	Thursday 9am to 10am	\$7	Roz rozhzumba@gmail.com
Stretching classes	Thursdays 11am to 12pm	\$5	Lu 4328941
60's up	4th Friday of month 10am to 4pm	\$12 annually fee	Joy 021491887
petanque or indoor bowling	Wednesday 1pm to 4pm		Sue 021850286
Music club	1st Monday of month 7pm to 10pm	\$5	Fulco 0274718428
Zumba	Monday 8.45am to 9.45am	\$8	Janine 021437840
Zumba	Wednesday 5.45pm to 6.45pm	\$8	Janine 021437840
Zumba	Friday 4.45pm to 5.45pm	\$8	Janine 021437840
casual gym	Monday to Friday 8am to 2pm, Thursdays to 6pm	\$2 per day	Christine 4327962
casual Squash	Monday to Friday 8am to 1pm	\$5 per hour	Christine 4327962

We are also home to Bream Bay Squash club and Bream Bay United Association Football club

# Charity golf Tournament raised \$11,000 for emergency services



Ngaire Cotton presented the Marc Sands Memorial Trophy to the Rockcote Resene Team. The Marsden Lions raised \$11,000 at its annual Charity Golf Tournament which will be distributed amongst: the Northland Emergency Services Trust (the rescue helicopter), the Ruakākā Surf Lifesaving Club, Ruakākā Volunteer Fire Service and St John Bream Bay. The tournament was held on Friday 10 May at the Waipu Golf Club. The weather was fine and 92 players took part. Marsden Lions members were on course early setting up signage on the putting green, organizing the prizes, auction items and raffles and preparing the barbeque. Winner on the day was Rockcote Resene team and the Fuso Closest to the Pin on the 13<sup>th</sup> hole prize went to Laurie Whitelaw of OTP Boys.

## Men in Kilts vs the NZ Barbarians

This year's Men in Kilts Rugby big game is a match between the Men in Kilts Northland Vikings (an invitation team made up of former Northland players) and the NZ Barbarians, with former super and provincial rugby players on June 20 starting at 2pm in the Caledonian Park. There will be a curtain raiser at 12.30pm with Waipu's Men in Kilts against Manaia. Earlier in the day starting at 10.45am and then at 11.30am there is netball in the Celtic Barn with Waipu's Tarts in Tartan against teams from Takahiwai. The Northland Taniwha will be there. Food and bar facilities will be available and there will be sporting memorabilia auctions and raffles.

## Is rugby better than league?

Rugby is better than League is the topic for this year's Great Debate, part of the Waipu Winter Festival. This is a free event and will be held on 21 June from 6.30pm in the Waipu Hotel. The Winter Festival runs from 18 June to 28 July finishing with the Waipu Cove Surf Lifesaving Club's annual mid-winter swim.

**EVERY THURSDAY**

# BREAM BAY Link

MORNING		
9.00am	Departs	Kaiwaka Kaiwaka Hall
9.15am	Departs	Mangawhai Village Village Shops Bus Stop (by restrooms)
9.20am	Departs	Mangawhai Heads I-Site
9.35am	Departs	Langs Beach Corner of Wairahi and Cove Roads
9.40am	Departs	Waipu Cove Beach Car park
9.50am	Departs	Waipu Monument Bus stop
10.10am	Departs	Ruakākā Peter Snell Road (opposite Takutai Place)
10.50am	Arrives	Whangārei Rose Street Bus Terminus

*\*For travel within Whangārei see CityLink Whangārei timetable [www.citylinkwhangarei.co.nz](http://www.citylinkwhangarei.co.nz) or get your timetable from the Rose Street office.*

AFTERNOON		
3.00pm	Departs	Whangārei Rose Street Bus Terminus
3.40pm	Departs	Ruakākā Peter Snell Road (opposite Takutai Place)
4.00pm	Departs	Waipu Monument Bus stop
4.10pm	Departs	Waipu Cove Beach Car park
4.15pm	Departs	Langs Beach Corner of Wairahi and Cove Roads
4.30pm	Departs	Mangawhai Heads I-Site
4.35pm	Departs	Mangawhai Village Village Shops Bus Stop (by restrooms)
4.50pm	Arrives	Kaiwaka Kaiwaka Hall

**OPERATED BY LEABOURN**

Ph: 0800 994 404  
E: [office@leabourn.co.nz](mailto:office@leabourn.co.nz)

**FARES**

	One Way	Return
Kaiwaka	\$7.00	\$10.00
Mangawhai	\$7.00	\$10.00
Mangawhai Heads	\$7.00	\$10.00
Langs Beach	\$7.00	\$10.00
Waipu Cove	\$6.00	\$8.00
Waipu	\$6.00	\$8.00
Ruakākā	\$5.00	\$7.00

**ROUTE DESCRIPTION**  
Kaiwaka/Mangawhai Road, Molesworth Road, Mangawhai Heads Road, Cove Road, The Centre Waipu, Nova Scotia Drive, SH1, Marsden Point Road, Peter Snell Road, Marsden Point Road, SH15A, SH1, Otaika Road, Maunu Road, Walton Street, Rose Street Bus Terminal.

If you would like to be picked up elsewhere along the route, please phone Leabourn's to arrange this on the Wednesday before you want to travel.

CONTRACTED TO: Northland REGIONAL COUNCIL

For service updates visit: [www.buslink.co.nz](http://www.buslink.co.nz)

Feedback to [buslink@nrc.govt.nz](mailto:buslink@nrc.govt.nz)

With You every step of the way

**CENTURY 21** Jean Johnson Realty

Sales and Property Management  
Dargaville, Whangarei, Bream Bay  
W [dargaville.century21.co.nz](http://dargaville.century21.co.nz) P 09 439 7575

# THE MAINTENANCE

[www.themaintenance.co.nz](http://www.themaintenance.co.nz)

- ❖ Chemical and non-chemical house washing
- ❖ Window and house cleaning
- ❖ Painting and staining – exterior house, decking and fences
- ❖ Water blasting - decks, driveways and courtyards
- ❖ Clean guttering and downpipes
- ❖ Pest control and spider spraying
- ❖ Tree trimming with extension saw

**Phone now for a FREE QUOTE**

REVITALISE ❖ PRESERVE ❖ PROLONG ❖ MAINTAIN

**TONY 021 196 2949 OR MELISA 021 075 6770**

## WAIPU LOTTO & POST

Lotto  
Postshop  
Photocopying

Emailing  
Newsagents  
All stationery needs

The Centre, Waipu
Phone 432 0900

## Maungaturoto Primary School 150th Jubilee



- **Saturday, 19th of October 2024** is the 150th Jubilee of Maungaturoto and Districts Primary Schools.
- **Past and present staff and students are invited** to join us, reminisce, and catch up with old friends whilst enjoying our annual Pet and flower show.
- **Powhiri 10am**, followed by official speeches and cake cutting.
- **Guests** will then be invited to tour classrooms, have decade photos, and pick up registration packs.
- **Dinner** will be held Saturday evening at the Maungaturoto Country Club. **Bar opens at 5pm.**

**The committee would appreciate registrations ASAP TO HELP US WITH OUR PLANNING**

**HOW DO I REGISTER?**

- School Website
- Scan Qr code
- Find us on Facebook
- Hard copies available - school office
- Email: [jubilee@maungaturoto.school.nz](mailto:jubilee@maungaturoto.school.nz)



## WHAT'S ON IN BREAM BAY

- **COMMUNITY CONNECTIONS** 10:30am-12pm every Friday in the hall.at the Bream Bay Community Trust in Takutai Place, Ruakākāā. Light refreshments available.
- **RUAKAKA RACES** Next race day Saturday 8 June. Bream Bay Business race day. Gates open 11am - 5pm.
- **WAIPU BOUTIQUE SUNDAY MARKET** Next on Sunday 9 June From 9am to 1pm in the Coronation Hall
- **MUSIC BINGO** at the Waipu Citizens and Services Club - The RAZZA on Wednesday 12 June from 6pm. Fundraiser for the Bream Bay Coolege steelpan band The Panimals trip to Australia.
- **SHANE AND THE SHAZAM BAND** At the Marsden Boat and Yacht Club Saturday 15 June 2.00pm Tickets \$35.00. A cash bar will be operating. Bookings with pre-payment essential phone 0272359623 email [pete@bassbass.co.nz](mailto:pete@bassbass.co.nz) to book
- **ONE TREE POINT ARTISAN MARKET** Next on Sunday 16 June 9am - 1pm. One Tree Point School quadrant and field. Fundraising for Whangārei Hospital Children's Ward.
- **OPERA NORTH CHAMBER CHOIR AND THE BREAM BAY CHILDREN'S CHOIR** in the Waipu Coronation Hall, Sunday 16 June at 3pm. Entry \$5 at the door. Children and senior citizens free.
- **COMMUNITY PUBLIC BINGO** Last Wednesday in each month (Except December) Waipu Citizens and Srvices Club . Club open to public Calling starts 7.30 pm Restaurant open 5.30 pm All Welcome. Next on Wednesday 26 June
- **ICE SKATING** at the Waipu Celtic Barn, Waipu June 28 - June 30 Book on: [trybooking.com/nznz](http://trybooking.com/nznz)
- **STARS IN YOUR EYES WAIPU.** Show dates 2 and 3 August.
- **WAIPU MUSEUM** 36, The Centre, Waipu. Open seven days 10am- 4pm

# TRADES & SERVICE DIRECTORY



**CALL CHRIS HICKEY ON 027 561 1719**  
email: [fencingspecialists.nz@gmail.com](mailto:fencingspecialists.nz@gmail.com)

ALL ASPECTS OF FARM & LIFESTYLE BLOCK FENCING & MAINTENANCE INCLUDING:

- Post & Batten • Entrances
- Post & Rail • Retaining Walls
- Stock Yards • Riparian Lots
- Netting • Subdivision



BREAM BAY ACCOMMODATION

**RUAKAKA**

**STUDIO - HOLIDAY HOMES - B&B**

BOOK ONLINE OR PHONE

**Ph: 09 432 7025 Mob: 021 2722 739**

website for online bookings: [www.breambayaccommodation.com](http://www.breambayaccommodation.com)

**GREG STEWART**  
Qualified Builder...License # 106626

Over 45 years experience  
Prompt Service

**Ph 021 317 555**  
Email [gpstewart56@gmail.com](mailto:gpstewart56@gmail.com)

SMALL ALTERATIONS..  
DECKING..FENCING  
BUILDING REPAIRS..HANDYMAN

**NO JOB TOO SMALL GIVE ME A CALL**



**Bream Bay Tax**

**Tax Accounting Business support**

Free first consult.  
Fixed price packages  
Supporting Bream Bay businesses

Robb MacKinlay 027 540 7859  
[robb@breambaytax.nz](mailto:robb@breambaytax.nz) [www.breambaytax.nz](http://www.breambaytax.nz)



I Love Selling Bream Bay!



**Angelique Hartnett**  
Coastal & Lifestyle Sales / AREINZ  
0274 356 411 / 09 435 5914 P  
[a.hartnett@barfoot.co.nz](mailto:a.hartnett@barfoot.co.nz) E

## This Space Now available

**\$42.80 gst inclusive  
or for regular customers  
(six or more insertions)  
\$38.50 gst inclusive**

# Deadline for next issue - Wednesday 12 June

# TRADES & SERVICE DIRECTORY

Ph 09 432 0209

**NORM FAGG**  
OWNER/OPERATOR

**Act Now Car Rentals**

M: 0274 362 480  
Nz Freephone: 0800 362 480  
E: info@actnowrentals.co.nz

**From \$45 per day - Min 4 days**  
Based in Ruakākā

**Ph: 09 432 0123**

**BREAM BAY GLASS**

FOR ALL YOUR GLASS NEEDS



Mob: 0274954548

**AMG**  
AUTO MOBILE GLASS

**FAST WINDSCREEN REPLACEMENTS & CHIP REPAIRS**

- Mobile service or come to our workshop
- Ultra competitive pricing. • Insurance claims welcome.
- Windscreen replacement in under an hour.

**Phone Conrad on 022 036 2916**  
2/17 Gumdigger place.

**BRADLEY**  
EARTHWORKS

- POND CLEANING • DRIVEWAYS • RACEWAYS
- LAND CLEARING • TREE REMOVAL • ROADING AND MORE!

**CALL ME TODAY FOR ALL YOUR EARTH & TREE WORKS**  
PHONE ROY 027 374 5090 WAIPU

**ABSOLUTE CONCRETE**

[www.absoluteconcrete.co.nz](http://www.absoluteconcrete.co.nz)

CULVERT PIPES  
Spun and reinforced  
Crane truck delivery  
Drainage Merchant - Hardware Store  
Email: sales@absoluteconcrete.co.nz  
Phone (09) 431 2211  
KAIWAKA

**MACSWAY**  
SCAFFOLDING LTD

WE BUILD, HIRE, ALLOY MOBILES, TEMPORARY FENCING, & SHRINKWRAP

Ph: 09 432 7643 • 0274 726 772  
macsway@xtra.co.nz Kapa Road, Ruakaka

**O'MALLEY CONTRACTING LTD | CONCRETE SPECIALISTS**

- FOUNDATIONS
- HOUSE SLABS | STAIRS
- RETAINING WALLS
- DRIVEWAYS | CARPARKS
- EXPOSED AGGREGATE
- COLOURED CONCRETE
- COMMERCIAL | RESIDENTIAL
- LICENCED BULDING PRACTITIONER

Free No Obligation Quote

FAMILY OWNED & OPERATED

021 2200 198 | [OMALLEYCONTRACTING.COM](http://OMALLEYCONTRACTING.COM)

**Bream Bay Concrete Ltd.**

Free Quotes • Reliable Service • Quality workmanship

- Concrete pads
- Shed floors
- Pathways
- Home floors
- Driveways
- Concrete cutting
- Excavation works
- Retaining walls
- Paling fences
- Profiles for homes & sheds
- Subfloors & boxing

**Mark Royals Ph: 432 0107 Mob: 0274 433 130**

**BREAM BAY ELECTRICAL**

Wiring Safe Homes And Businesses Throughout Northland

RESIDENTIAL COMMERCIAL INDUSTRIAL

0800 223 555 027 35 33 555  
[www.breambayelectrical.co.nz](http://www.breambayelectrical.co.nz)

**BAYSIDE CONTRACTORS**

RESIDENTIAL EARTHWORKS • HOUSE SITES  
DRIVEWAYS • TRENCHING & DRILLING

Contact Shane 027 3019 480  
admin@baysidecontractors.co.nz

**TC ENGINEERING**  
Metalwork Specialists

Stainless and Aluminium Welding and Bespoke Fabrication



Gates and outdoor furniture. Marine repairs and fabrication.  
Onsite welding for farm repairs and modifications.  
[www.tcengineering.nz](http://www.tcengineering.nz) 021 145 7075 or 021 203 0309

**Tractor Mulching**

100hp tractor with high bodied yflails, mulcher, park finishing mowers, slashing Gorse & blackberry spraying

Also mechanical tractor repairs

Phone Bain McGregor 0274 979 013 or 09 432 0527



**Grant McLean**  
Stock Agent for Bream Bay

Ph 021 7758 48  
Email: skincarla@xtra.co.nz

All aspects of stock sales including:  
• dairy beef • bobby calves • store cattle • live export heifers  
• sheep • pigs • supplying stock for slaughter

Also caters for small block holders.

**Carrfields Livestock**

**Ruakaka Motors**

Mechanical and Auto Electrical Repairs and Servicing

Monday - Friday 7.30am - 5pm  
Tyres and Batteries  
WOF testing Gold Card discount

Drop off, pick up service available in Waipu  
**Phone 432 7233**

**PARADISE QUARRY**

**PARADISE QUARRY STONEMASONS**  
Specialists in stunning stone for landscape  
Suppliers & installers of northland's own schist for all your stonemasonry & landscaping Requirements

(09) 432 2722 or GEOFF (021) 972 139  
[www.paradisequarry.com](http://www.paradisequarry.com)

**SUSAN JACOBS PAINTING**  
INTERIOR • EXTERIOR  
027 370 5339

**BLIND PRO**

Blinds • Awnings • Shutters

Indoor blinds and outdoor screens

Call us today for a free, no obligation consultation and quote

ph 09 423 9661  
website [www.blindpro.co.nz](http://www.blindpro.co.nz)  
email [info@blindpro.co.nz](mailto:info@blindpro.co.nz)

**McQUINN PUMPS**  
How's Business? ... It's Pumping!

24/7 SALES, SERVICE & INSTALLATION | PUMPS & WATER TREATMENT  
PHONE SUPPORT AVAILABLE

0800 627 846 PHONE FREE

**NOW AT 72 KIOREROA ROAD —ALONG FROM RD1 & ITM**

**Deadline for next issue - Wednesday 12 June**

# TRADES & SERVICE DIRECTORY



**HANSEN**  
Drainage & Earthworks

**DRAINAGE:**  
\* Septic Systems \* Water Tanks \* Truck & Digger Hire \*  
\* Subdivisions \* Domestic \* Commercial \*  
Certifying Drainlayers

Licensed Contractor for  
Waste & Drainage Work



**EARTHWORKS:**  
\* Subdivisions \*  
\* Farm Work: Effluent Pond Design & Build, Dams, Races \*  
\* House Sites \* Driveway Prep \* Lawns \* Roding \*

P. 09 432-7877 M. 027-432-7877  
E. karl@hansende.co.nz



**Team James Alexander**

JAMES ALEXANDER 021 878 178  
SALESPERSON & AUCTIONEER

ASHLEIGH LOUISE 027 733 5703  
SALES ASSOCIATE

Licensee Salesperson, The Real Estate Shop Limited, Licensed (REAA 2008)

**Small Building Jobs & Repairs**

- Letterboxes • Curtains • Smoke alarms,
- Clothesline • Decks • Fences,
- Kitchen and bathroom repairs
- Rental property maintenance

**Call Tony on 021 196 2949**



**WORTHY AG**

**SMALL BLOCK MULCHING**

Phone COLIN (Joe) 0274916983

**LAWSON**  
**CARTAGE**

FOR ALL YOUR  
EARTHWORKS & CARTAGE NEEDS  
*Suppliers of: topsoil, compost, woodchip,  
bark, sand, pebble, rocks and firewood.*

**Ph/Fax 09 432 8418 or 021 768 940**  
458 Marsden Point Rd. PO Box 142, Ruakaka 0151  
email: lawsoncartage@xtra.co.nz



**Long Run Roofing & Cladding**  
Re-roofing & Spouting  
Edge Protection

Terry Mounsey  
021 562 269  
wetaroofing@xtra.co.nz

**RELIABLE & PROFESSIONAL SERVICE**



**STORAGE**  
**BREAM BAY**  
76 Waiwarawara Dr, Ruakaka 0171

Karen Loft  
Business Manager  
Mob: 021 432 701

Office Hours 9.00 - 1.00  
email: storagebreambay@gmail.com  
www.storagebreambay.co.nz

**LOW COST DRIVEWAYS & SURFACING NEEDS**  
Concrete or asphalt beyond your budget ...  
We have the next best solution for a fraction of the price.  
Call for a quote, you'll be pleased you did!  
Paradise Quarry Contractors  
**Geoff (021) 972 139 or (09) 432 2722**  
For contractors who 'think' ...

**YOUR MONEY BLUEPRINT**

**WAIPU BASED FINANCIAL PLANNER**

- Investment planning
- Retirement planning
- General financial planning

**Name - Nick Carr**  
**Phone - 022 504 7612**

Email - ncarr@yourmoneyblueprint.co.nz  
Website - www.yourmoneyblueprint.co.nz



**MPP**  
**MARSDEN**  
PANEL & PAINT

Panelbeating and Spraypainting  
Caravan and Motorhome Repairs  
Tyres New and Secondhand  
Punctures

**470 Marsden Point Rd, Ruakaka**  
**Call 09 4330313 24 Hrs or Bert 021 983 724**

**M.V.B. Electrical Ltd.**  
*Working in Bream Bay since 1977*

Repairs • Installations • Advice

**Mike van Blommestein**

Phone: 09 432 1015 • Mobile: 0274 783 749  
Email: mikevanb@xtra.co.nz

**BLINDS SHUTTERS & CURTAINS**  
Bream Bay Whangarei & Districts

**Rollers, Venetians, Verticals**  
**Shutters, Curtains & Outdoor Blinds**



Ask about our **DISCOUNT** for housetlots  
Free in-home measure & quote  
Free Installation

**Phone Gail 0211 95 35 35**

[www.blindsandshutters.co.nz](http://www.blindsandshutters.co.nz)

**GRAEME BINT**  
**FENCING**

*GOOD RATES, NO JOB TOO SMALL*  
09 432-1599 or  
027-292-2833

grbint@xtra.co.nz

**MANGAWHAI SMALL ENGINES**  
Grasshopper, Husqvarna and Honda dealer



194 Molesworth Drive, Mangawhai  
Ph: 09 431 5270 or Mb: 021 655 481  
Email: msengines@xtra.co.nz

**BREAM BAY HYDRAULICS**

Bream Bay's first local hydraulic hose service



021 308 358 breambayengineering@gmail.com

**FOR SALE**

**HP COMPAQ COMPUTER** all-in-one 120ssd  
8 gb ram 23" monitor windows 10 pro \$165 ono  
Ph 02040501313

**HAY CONVENTIONAL BALES AND BALAGE**  
Top quality. Phone 027 432 0351

**ECHO 51CS CHAINSAW** with 400mm bar.  
Just serviced, runs well. \$495.00  
**BLACK & DECKER ELECTRIC BLOWER** –  
as new and powerful. \$95.00  
Please contact Dave on 027-5122-311

**WILTSHIRE SHEEP**  
**Ideal lifestyle block sheep**  
**Self Shedding**  
**Ph 027 432 1016**

**WORMS FOR SALE**  
For worm farms  
Phone or text  
**027 432 0070**

**RAWLEIGH'S PRODUCTS**  
Independent dealer. Ointments back in stock.  
Phone Susan McRae  
027 227 2291.

**WATER TANKS**  
09 431 2211  
sales@absoluteconcrete.co.nz

**Scooters Plywood**  
3mtr Scaffold Planks \$77  
12mm H3.2 NS  
Plywood \$79.00  
Ph 438 6565

**SERVICES OFFERED**

**NORTHLAND HEADSTONES**  
Located in One Tree Point  
Your Local Headstone Showroom  
Call 0800 707 800  
www.northlandheadstones.co.nz

**Cut it! Chip it! Grind it!**  
**Tree Removal**  
✓ Pruning  
✓ Chipping  
✓ Stump grinding  
Qualified & Insured  
Ph Scott (0800) 468-9663  
**Arborcare Tree Maintenance**

**GLENMOHR water care**  
**WATER TANK CLEANING**  
**No need to empty your tank**  
• Vacuum or full scrub  
Phone Mark Draper  
0274 707 607

**JD LAWN CARE SERVICES**  
Lawn mowing, Weed spraying,  
Water blasting, surface cleaning of  
driveways, paths and patios, Hedge  
trimming, Section clearing, tree  
pruning, wood chipping and more.  
**PH. 021 063 7907**

**EMPLOYMENT**

**WANTED** - Someone to take care of CLASSIC VEHICLE COLLECTION - if you're good with electrics EVEN BETTER, but good old school mechanics and common sense. Great working conditions, P/T or Full time or hrs to suit you. Ph Dave 021947710 or 09 432 0011 anytime

**FOR HIRE**

**SHIPPING CONTAINERS**  
20ft Shipping Containers, hire offsite \$180 per month + GST + Del, minimum 3 months,  
Ph 0212722739 / 021432701

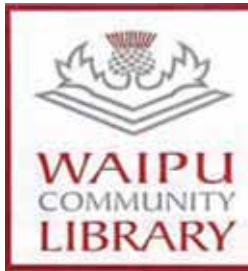
**SOCIAL SERVICES**

  
**LINKING HANDS**  
Health Shuttle  
Phone  
**(09) 431 8969**

**BREAM BAY ANGLICAN FOODBANK**  
If you would like assistance or know someone that does, perhaps we can help  
Please phone Janet  
**433 0045**

  
**Not sure? Ask us!**  
We provide free, confidential and independent information and advice to help you understand your rights and responsibilities.  
Contact us for assistance.  
09 438 8046 • whangarei@cab.org.nz  
www.cab.org.nz


**LIBRARY HOURS**

  
**Monday, Wednesday, Thursday, Friday & Saturday 10am - 1pm. Tuesday 10am - 4pm. Phone 432 0375**

  
**RUAKAKA COMMUNITY LIBRARY**  
Takutai Place, Ruakaka  
432 8408  
Mon - Fri 9:30am-3:30pm  
Sat 9am-1pm  
JP Service available Saturdays 10am - 11am.

**THE NEXT PUBLICATION DATE**  
of the Bream Bay News will be Thursday 20 June  
The deadline for all copy is 4pm on Wednesday 12 June

**SOCIAL SERVICES**

  
**Safeman Safe family Men's Centre**  
Safeman Safefamily offers a safe place for men to talk privately without judgement and with complete confidentiality. We are peer led and professionally supported and offer a range of services and support for men and their families.  
The services we provide are as follows:  
• Advocacy Navigator  
• Court support  
• FGC Support  
• Probation Community Service Provider  
• Legal Advice  
• Marriage Celebrant  
• House and property blessing  
• One to one counselling  
• Drug and Alcohol support  
• Anger management group sessions  
• Supervisor for court ordered access  
• Work brokers/ help with employment opportunities.  
No appointments are necessary, we have an open door policeu - if you need help or know someone that does just come on down to: **9 Takutai Place, Ruakākā**. We are right next door to Jimmy's Barber Shop or I can be reached by phone 021 121 0763 - Phil Paikea

**Bream Bay Community Support Trust**  
  
Takutai Place, Ruakaka Phone: 09 432 7197  
**Services we provide:**  
• Registered Social Workers  
• Family Support Workers  
• Youth Workers  
• Youth Holiday Programme  
• Counsellors  
• Community Connectors (Connecting community to various services)  
• Free Whanau Ora Medical Clinic with Ki A Ora Ngatiwai. Wednesday mornings 10am-12noon, by appointment only phone 09 435 4586  
• Free Budgeting Service -fortnighly on Thursdays 10am-1pm, by appointment  
• Mana Wahine Ki Wahine Toa & Ha Tane groups  
• Community Gardens behind our main building please help yourself  
• Pataka Kai/ Food Pantry located outside our reception door.  
Follow us on social media - Facebook and Instagram for updates on what is happening here during the week.  
www.bbtrust.org.nz

**WANTED**

**OLD NEWSPAPER** Copies of the Bream Bay News, Advocate, Herald, Leader, Weekend Lifestyler, or Mangawhai Focus for recycling as erosion control. Waipu Lions fundraiser. Phone Dave Bell 09 432 0861.

**VEHICLES WANTED.** Top cash paid For any VANS, UTES, TRUCKS, 4X4, Dead or Alive, damaged, de-registered Mechanical problem, no WOF we buy it. Call 0800 333 398

## ACKNOWLEDGEMENT

### DAVID MCKENZIE

#### Thankyou

The McKenzie family would like to express their sincere thanks for the cards, letters, flowers and baking received following the recent loss of a dearly loved husband, father and grand father. Please accept this as a personal acknowledgement.

## PUBLIC NOTICES

### WAIPU BOAT AND FISHING CLUB INC NOTICE OF 2024 ANNUAL GENERAL MEETING

The AGM will be held at 3.00 pm on Sunday, 23rd June 2024 at the clubrooms, 100 Nova Scotia Drive, Waipu

Enquiries: waipubootandfishingclub@gmail.com



### One Tree Point Bowling Club Notice of Annual General Meeting

35 Pyle Road West, One Tree Point  
Sunday 9th June 2024 @ 11:30AM

Nominations for all positions on the Board are asked for. Along with Notices of Motions.

All Nominations and Motions to be with the Secretary by Friday 24th May.

Email secretaryotpb@gmail.com

### AGM

### Waipu Coronation Public Hall & Library Wednesday 12th June 2024 7pm at the Hall.

A New Constitution will be presented for approval by members. Members will receive a copy of this prior to the AGM  
All welcome



### DON'T LET TECHNOLOGY HOLD YOU BACK!!

SeniorNet Bream Bay can help you with Apple, Android and Microsoft. Desktops, Laptops, Phones, Tablets & Cameras. We are volunteers, tutors are available to guide your learning in easy steps. Bookings essential, please contact:  
Learning Centre: 09 4327692 (leave a message)  
Or email - seniornetbb@gmail.com  
Course venue: Learning Centre,  
7 Kapa Road, Ruakaka

## PUBLIC NOTICES

### BREAM BAY 60'S UP NOTICE OF AGM on FRIDAY 26TH MAY 2024

AT 1:00 pm at the Recreation Center  
9 Takutai Place,  
Ruakākā.

All nominations for Executive members & committee to be in before this date.

Contact  
President Mary Dwen  
022 0268128  
Secretary  
Joy Butterworth  
021 491 887

### RUAKAKA COMMUNITY LIBRARY A G M

Monday 17 June 2024  
3.30 p.m.

At the library Takutai Place, Ruakākā.



### Notice of Annual General Meeting Waipu Caledonian Society

Sunday, 23 June 2024, 3.00pm  
Celtic Barn Foyer.

AGM Agenda and Nomination Forms can be found on our website waipuhighlandgames.co.nz or by email request to the secretary.

All nominations and motions are to be with secretary by Friday 21 June 2024

Email: secretary@wcs.org.nz

Light refreshment provided at the conclusion  
All welcome

### NORTHPINE COMMUNITY LIAISON COMMITTEE

This committee meets periodically to review the environmental performance of the Northpine timber manufacturing plant in Waipu, in consultation with representatives of the local councils. Any Waipu resident with concerns about the environmental effects of the Northpine plant should notify the Northpine office (432 1155). Concerns will be recorded, considered and subsequently reviewed by the liaison committee. The Independent chairperson of the liaison committee is Steve Goldthorpe 0274 849 764.

LOCAL PEOPLE READ THE  
BREAM BAY NEWS  
IT IS AN EFFECTIVE  
PLACE TO ADVERTISE



### Bream Bay Medical Centre Ltd.

### Ruakākā Town Centre, Ruakākā

Monday - Friday: 8.45 am - 5pm

Saturdays: 9am - 12pm

### Marsden Cove Medical Centre 1A Ngawaka Lane, One Tree Point

Monday - Friday: 8.45am - 5pm

Please advise at time of booking if you require an extended consultation

Ph: 432 8060

New patients welcome

### BREAM BAY SUNDAY CHURCH SERVICES

**Presbyterian** Camellia Ave, Ruakaka: 8.45am. The Centre, Waipu: 10.15am. Prayer Service: 7pm

**Encounter** 223 Marsden Pt. Rd, Ruakaka, 10am.

**Anglican** - ST PAUL'S Church, 25 Karawai St, Ruakaka 1st and 3rd Sundays 9.30am  
ST. PETER'S CHURCH, 8 Nova Scotia Dr., Waipu 2nd and 4th Sundays, 09.30am

**Catholic** Holy Family Church, Ruakaka, 10.30am. Mass or Liturgy of the Word

**Lifepoint.** 300 OTP Rd, 10.30am.

## MARKETS



**OTP  
ARTISAN MARKET**  
Next on 16 June  
Fundraiser for Whangarei Hospital  
Children's Ward  
Third Sunday every month  
Spaces available PH 021 530 153  
Spaces Available Phone 021 530 153




Handmade & Homegrown  
ARTS | CRAFTS | FOOD  
Sunday 9 June  
9:00am - 1:00pm  
Waipu Coronation Hall  
Claire | 021 272 2294  
Kate | 021 064 5698  
www.waipumarket.co.nz

# Frazerhurst<sup>®</sup>


Curtains | Blinds | Awnings | Screens

40 years in Whangārei



Come and talk to us about your window furnishing requirements

- Free measure and quotes
- Free loan sample service
- Whangārei Showroom
- Satisfaction guaranteed



Blinds | Awnings | Shutters | Umbrellas

146 Lower Dent St.  
Whangārei  
Ph: 09 438 3986  
[www.frazerhurst.co.nz](http://www.frazerhurst.co.nz)

YOUR TRUST OUR PEOPLE





**Untapped Potential** WAI2655

**\$879,000**

- 3-bedroom / 1-bathroom farm home
- 4.9 ha's of good arable flat land
- Undercover veranda for BBQ gatherings
- Spacious double garage
- Extremely private with established trees
- Short drive to Waipu and the Brynderwyns
- Great project – come and make your mark!

Judy Guy 027 221 5623



**Perfect Position** WAI2659

**\$1,175,000**

- 3-bedrm/2-bathrm home on 2012m2 site
- Spacious and exquisitely presented
- Fabulous indoor and outdoor flow
- Beautifully landscaped and planted grounds
- Double garage and standalone single garage
- Short walk to the water's edge
- Follow the cycle walkway to Waipu village

Judy Guy 027 221 5623



**Waipu Village – Potential to Subdivide** WAI2626

Price by Negotiation

- First time on the market for 42 years
- Character, spacious 3 bedrm bungalow
- Situated on a generous 2223 m2 section
- Mature trees, vege garden, chook run
- Sleep-out, 2 x studios and single garage
- Option to continue fully operational cattery
- Short walk to Waipu Primary School and shops

Judy Guy 027 221 5623

Harcourts Waipu | 7 The Centre, Waipu | 09 432 4000

**Harcourts Waipu**



**BREM BAY REALTY**

**BREM BAY REALTY LIMITED (LICENSED: REAA 2008)**

Shop 11 | Town Centre | Ruakaka 0116 | NZ  
PH: 09 433-0300 | [bbrealty.co.nz](http://bbrealty.co.nz)  
[info@bbrealty.co.nz](mailto:info@bbrealty.co.nz)

Proud sponsors



New Listing!



TAKE A DIVE INTO YOUR OWN HOME

A complete refurbishment just recently completed involved new carpet & paint throughout. New roller blinds, light fittings, oven & rangehood. Total move in ready. A large deck off the pool is fully covered, well-lit with pull-down screens making it cosy & sheltered.

Price \$1,050,000 | [#4192](http://bbrealty.co.nz)

FIONA SOUTHORN MNZM  
Mob: 021 317 775

New Listing!



FLAT & FANTASTIC ON FLAX

Built in 2015, brick and tile, solid dependable and durable. The main living, kitchen, dining area is large and open plan, with two ranch sliders accessing a covered patio, perfect for the evening BBQ. Riverside, with esplanade perfect place to exercise the dog or walk to the shopping centre.

Price \$895,000 | [#4191](http://bbrealty.co.nz)

JOANNE DEWSON AREINZ  
Mob: 021 780 622



AFFORDABLE & ROOMY ON THE RIVER

Situated up a quiet right of way, this spacious 3-bedroom, 1-bathroom, separate toilet and laundry home, is awaiting a first home buyer or existing family. River access out the backyard for kayaking and swimming, a perfect childhood playground.

Price \$759,000 | [#4186](http://bbrealty.co.nz)

FIONA SOUTHORN MNZM  
Mob: 021 317 775



QUINTESSENTIALLY COASTAL

- Dual living, sunny modern 3 bedroom residence, plus 2 bedroom accommodation.
- Very private garden setting.
- Short walk to a great swimming spot or to the Marina Restaurant and bar.

Price by Neg | [#4182](http://bbrealty.co.nz)

JANINE GOLDSMITH AREINZ  
Mob: 021 432 793



PRIDE OF PLACE ON PUKEKO

Cul de sac living at its best and walkway to the River Esplanade. 200m2, 4 bedroom, 2-bathroom home on 633m2 elevated section. Open plan living, kitchen with butlers pantry, private covered courtyard plus oversized double garage. Fairly flat 2km walk to the shops.

Price by Neg | [#4184](http://bbrealty.co.nz)

JANINE GOLDSMITH AREINZ  
Mob: 021 432 793



BRING THE KIDS!

A sun catcher brick home situated close to the esplanade and river. Great outdoor living for the kids, comes with the four bedrooms, a study nook and two bathrooms. Open plan living with sliders flowing out to a fenced BBQ area and backyard. Nice and quiet in an established area.

Price \$815,000 | [#4189](http://bbrealty.co.nz)

FRANCIE STOKES  
Mob: 022 656 0165