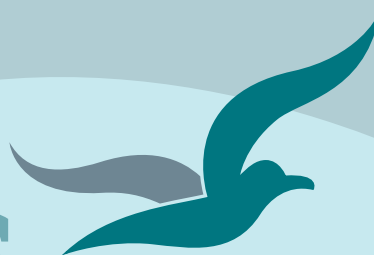


# Bream Bay News



Est.1967 | Locally owned and operated | Delivered FREE twice a month 7 March 2024

## Affordable Quality

- \* SECURITY DOORS
- \* INSECT SCREENS
- \* SHOWER DOORS
- \* BLINDS
- \* AWNINGS
- \* WARDROBE SYSTEMS

[www.homeplus.co.nz](http://www.homeplus.co.nz)



34 Albert St  
Whangārei

Est. 1977

PH: 438 9452

[whangarei@homeplus.co.nz](mailto:whangarei@homeplus.co.nz)

## How good is your cellphone coverage?

How good is the cell phone coverage where you live in Bream Bay? There are times when my phone rings and I have to lean out an upstairs window to be able to talk to whoever is calling. I live in lifestyle block country to the west of State Highway One, so its not as crowded here as it is down on the coast but with a few new houses going in and all of us using our mobile connection for so much more, there just isn't enough capacity.

The problem gets worse in the summer holidays when the band width doesn't cope with all the holiday makers and all their extra phones sending and receiving photographs and video clips, streaming movies, finding directions, making bank payments and the myriad of other things we now use our phones for.

By all accounts there is good cell phone coverage at Marsden Bay and One Tree Point. But parts of central Waipu are not so great and rural areas west of the Highway are pretty patchy.

Anton Trist, manager of Camp Waipu Cove said the coverage at Waipu Cove is abysmal, particularly over summer.

"Campers complain they can't get coverage. Some people who come up to Waipu for a holiday bring their work with them but then find they can't get a cell phone connection. They have to stand at the top of the dunes to get their phones to work."

Two summers ago at the Ruakākā Beach Holiday Park camp staff needed to call an ambulance and had to sprint back to the Manager's house use a land line as their Vodafone mobile phones didn't work.

Vodafone, now renamed OneNZ is on a mission to

*Continued on page 7*

## Six new Kāinga Ora homes in the Ruakākā Village



"Beautiful" was the verdict from most people who looked over the six new homes built for Kāinga Ora at the racecourse end of Peter Snell Rd. The Ruakaka community was given an opportunity to take a look at the four three bedroom and two two bedroom homes last week on Friday 1 March.

The buildings had been blessed by Patuharakeke Kaumatua earlier that morning and prior to the invitation to go inside for a look around there were speeches by Patuharakeke representatives and kapahaka by children from Ruakākā School .

*Continued on page 5.*



## Langs Beach 8 Kingswood Place

760 sqm 4 3 1 2

**Tender (unless sold prior)** Closing 11am, Wed 3 Apr 2024  
Building 5, Main Street Mangawhai Central, 83 Molesworth Drive, Mangawhai  
**Christine Birss** 027 235 4323 [christine.birss@bayleys.co.nz](mailto:christine.birss@bayleys.co.nz)  
MACKYS REAL ESTATE LTD, BAYLEYS, LICENSED UNDER THE REA ACT 2008

### Primo position to enjoy views along the beach

Positioned to enjoy the fantastic views along beach, and out over the sea. Some days there is barely a ripple on the water. Other days it's quite mesmerising to watch as the waves roll in to the beach, often with multiple surfers spread along length of the beach.

Main master bedroom occupies entire top level. Spacious with its own deck, plus a generous ensuite and WIR. Enjoy the beach and sea views from your bed, or laze on a deck chair and listen to the surf.

**Opportunity doesn't knock twice. Listen to your inner voice and make a time to visit soon.**

[bayleys.co.nz/1153560](http://bayleys.co.nz/1153560)

**BAYLEYS**

LET'S CELEBRATE OUR

**MAUNGATŪROTO AND DISTRICTS  
PRIMARY SCHOOL**

**150<sup>TH</sup>  
Jubilee**

*Striving for Great Heights Maungatūroto*

MAUNGATŪROTO PRIMARY SCHOOL

We will be hosting our 150th Jubilee on Saturday, 19th of October 2024.

Saturday will be our annual Pet and Flower Show Day. Past and present staff and students are invited to join us, reminisce, and catch up with old friends whilst enjoying this school event. A powhiri will be at 10am followed by a performance by our Kapa Haka Roopu, cake cutting and speeches. Guests will then be invited to tour the classrooms, have decade photos, and pick up registration packs. A dinner will be held on Saturday evening at the Maungatūroto Country Club - Bar opens at 5pm.

# Due to venue restrictions, numbers will be limited to 250 people for the dinner/dance.

**HOW DO I REGISTER?**

- SCHOOL WEBSITE
- SCAN QR CODE
- FIND US ON FACE BOOK
- HARD COPIES AVAILABLE FROM SCHOOL OFFICE
- EMAIL JUBILEE@MAUNGATUROTO.SCHOOL.NZ

**f MAUNGATUROTO PRIMARY SCHOOL  
150TH JUBILEE**



**HAMMER  
HARDWARE**  
It's your local

For all your Household Needs, DIY and Gardening Supplies,  
Fencing Equipment, Plumbing & Electrical Fittings.

**Roads closed but we are open!**

**OPEN 7 DAYS** Monday - Friday 8:00am - 5:00pm  
Saturday 8:00am - 4:00pm | Sunday 9:00am - 3:00pm  
Public Holidays 9:00am - 3:00pm

Waipu Hammer Hardware | 35 the Centre, Waipu | 09 432 0292

## The Bream Bay News

is published by Bream Bay News Ltd. Address : RD 2, Waipu  
Phone : (09) 432 0209 Mobile: 027 432 0070 Email : bream-  
baynews@xtra.co.nz  
Website: www.breambaynews.co.nz  
Editor: Marilyn Cox . Accounts : Susan McRae. Technical assistance...  
Geoff Spencer  
Advertising design and website maintenance... Megan Lea.  
Printed by NZME  
We distribute 5900 copies twice a month in Ruakaka, One Tree Point,  
Waipu, Mangawhai and Maungatūroto

**Phone the BREAM BAY NEWS  
027432 0070**

**or email:breambaynews@xtra.co.nz**

**if you know of something interesting going on in Bream Bay.**

## EDITORIAL

### Increased Police presence needed to sort our problems in the Ruakākā Village

I had a look over the new Kāinga Ora (Housing NZ) homes at the racecourse end of Peter Snell Rd. at the open day on Friday 1 March and was impressed. I hope the people moving from their old houses at the other end of the Ruakākā Village enjoy these lovely new homes with their wooden fences, contained gardens, decking, heat pumps and spacious kitchens and bathrooms and build happy lives here.

I know how it is when you have lived in the same place for a long time. You put down roots, watch the seasonal changes in the trees and garden you have planted and have memories. Sometimes though, changes can be for the better and with a positive outlook you can find things to celebrate in your new circumstances. It helps that these six new homes are not too far from the old ones so that the deep community connections people have made are retained. I congratulate Kāinga Ora staff, in particular Jo Haunui who is tasked with finding places for the tenants living in the block at the end intersection of Tamingi St, Tiki Place and Peter Snell Rd. planned for redevelopment, for managing this relocation so carefully. But seventeen (the number of houses due for demolition) does not fit into six so Jo still has a difficult task in accommodating all the current tenants. Some have opted to move to other locations and she is helping them find homes in their chosen new communities.

Another possibility is that the Tiki Place, Tamingi Rd. development is built in stages, with people able to move directly from their current homes into the newly built section once this is completed. But this is possibly not the most efficient way to build a housing block. For those who want (or need) to stay in Ruakākā, Jo is on the look out for suitable housing.

We desperately need more social housing. Having a secure, warm and dry home makes life easier. Overcrowding, when multiple families are crammed into small inadequate houses, can lead to conflict, which can have terrible outcomes.

It takes extraordinary people to invite homeless relatives, little children who need parenting, older children who need sorting out, elderly who need care into their homes and to adjust to the many compromises you need to make in these situations with kindness and grace. I know of many local people who rise to the occasion when needed. People who care for their whanau in sometimes-difficult circumstances should be recognized for the contributions they make and it is in our society's best interest to provide housing to relieve some of these pressures. It has been a long time since there has been any government investment in new homes in Bream Bay. The existing Kāinga Ora homes are mostly houses that were handed over with the disbandment of the NZ Electricity Corporation back in the 1970s. They have served us well, providing secure homes, in walking distance of Bream Bay College, Ruakākā Towncentre and, best of all, the beach, to generations of esteemed local families.

Ruakākā village people are asking if the planned Tamingi Rd./Tiki Place development can be downsized without proposed two storey buildings. As it stands, with the edition of the six already completed houses, there will be 39 additional Kāinga Ora homes in the village.

Given recent events in the village it is understandable that people are apprehensive about what this will bring.

Jo has said she is prioritizing people already living in Ruakākā or who have strong connections here for occupancy of the new homes. But on my way down to the open day at the new houses I passed a newly built wooden fence smashed in four places where it had been rammed by a vehicle the previous night. A resident who lives near where this happened was wondering if next week there might be flying bullets.

There is clearly something already going on in the village that needs Police intervention. It would be good to see an increased Police presence here. There has been talk of installing security cameras, which might help to identify the criminals who are causing all this trouble. My suggestion is a community constable (do these still exist) assigned to the village who can get a good understanding of the people and the undercurrents, and work with the community to eliminate the scourges of violence, drug trafficking and addictions, which I would hazard a guess are behind all the recent tragic events.

What would also help is a strong, united Ruakaka Village community deciding that it will no longer tolerate drug trafficking and violence in its midst.

*Marilyn*



## Waipu Croquet Club hosts national tournament

It was a big day at the Waipu Croquet Club on Friday 1 February when nine of New Zealand's top ranked women Croquet Golf players arrived for a three-day invitation tournament. The tenth player Jean Kent is a member of the Waipu club so was in the welcoming party.

Club President Bev Pomana reflected on how far the club had come in the past few years with a new clubhouse replacing a little shed with a dirt floor, no toilet, no electricity and no running water and now three croquet lawns. She said a big tournament like this would not have been possible in past years.

Darla Blake, the President of Northland Croquet, had travelled from Doubtless Bay for the event and said it was a proud day for Northland to be hosting this national tournament.

Stuart Finlayson in full regalia piped as the competitors arrived and then led the ten in a circuit around one of the greens before the games began.

Tournament Manager Lynda Small explained that each of the ten competitors would play every other player, so nine matches in total and three rounds each day.

The players were: Ashley Cooke - Mt Maunganui, Helen Reeves - Heretaunga, Nicola Clement - Park Croquet Club of Hawera, Pixi Jones Merredew - Warkworth, Patricia Anderton - Morrinsville, Marion Taylor - Warkworth, Christine Newton - Matamata, Vanessa Hanna - Hamilton East, Mattie Clarkson - Hawera and Jean Kent of Waipu.

Jean Tafa of Waipu was tournament referee.

The winners of the CNZ Women's Invitation were - 1st place Helen Reeves from Hawkes Bay, 2nd place Ashley Cooke from Bay of Plenty 3rd place Nicola Clement from South Taranaki. Waipu's Jean Kent was 5th on a countback.



Piper Stuart Finlayson leads the competitors on a march around a green before the competition began

**RayWhite.**

**STEP RIGHT UP  
— WITH —  
TEAM  
JAMES ALEXANDER**



**Team James Alexander are proud to be the  
Platinum Sponsor of the Waipu Easter Carnival yet again!**

**Be sure to stop by our bike challenge for your shot at glory  
(or redemption!)**

**JAMES ALEXANDER | 021 878 178**

**PROUDLY SUPPORTING OUR LOCAL COMMUNITY**

Licensee Salesperson. Ray White Bream Bay & Waipu. The Real Estate Shop Limited. Licensed (REAA 2008)

**BREAM BAY STORAGE**  
 INSIDE/OUTSIDE storage at 50 Cove Rd., Waipu  
**Free phone. 0800 432 135**  
**enquiry@breambaystorage.co.nz**  
**www.breambaystorage.co.nz**

**RUAKAKA SAFE STORAGE**  
 99 MARSDEN PT ROAD, RUAKAKA  
 92 Units from 6 x 3 to 1 x 1  
 Each unit individually alarmed and monitored  
 Electrified security fence  
**Ph. 0508 273 262 or 0275 310 788**  
 CLEAN - DRY - SECURE

 **HAVENING TECHNIQUES®**  
 CERTIFIED PRACTITIONER

Havening Techniques® are an evidence-based psychosensory healing method to help you overcome the consequences of traumatic and stressful events, including, phobias, fears, burnout, chronic pain, whilst building resilience and wellbeing.

As a nurse and midwife for over 44 years, I'm skilled at working with health and childbirth traumas/ fears.

Appointments are either in-person in Waipu or online.

Contact me for further information.

Professor Susan Crowther PhD  
 Tel: 022 310 1978  
 E: drsusan.crowther@gmail.com

**THE NEXT PUBLICATION DATE**  
 of the Bream Bay News will be Thursday 21 March  
 The deadline for all copy is 4pm on  
 Wednesday 13 March

## How many near misses have there been at the McCathie Rd./ Port Marsden Highway intersection?



Extra caution needed at the McCathie Rd / Port Marsden /One Tree Point Rd intersection

How many near misses have there been at the McCathie Rd./ Port Marsden Highway/ One Tree Point Rd intersection?

A woman told the Bream Bay News last week about a recent frightening experience when an empty log truck heading to the port had to swerve off the road to avoid her vehicle after she had pulled out without seeing it.

The woman said she is always careful approaching the intersection looking both ways multiple times but somehow on this occasion didn't see the fast approaching truck.

There are 83 units at the Bream Bay Village retirement complex whose residents need to use the intersection to cross the 100kmph highway to get to the Ruakākā Town Centre for the supermarket, Medical Centre, library etc and to drive out onto State Highway One. There is more development planned both at the retirement village and alongside in the Marsden City Development.

Add to this the massive development underway

at One Tree Point including The Landing which when completed will provide 500 new residential lots.

The McCathie Rd intersection has been listed as one of the key intersections that will be impacted by the expansion of Northport.

Concerns about the safety of the intersection have been raised by the Ruakākā Residents and Ratepayers Association. member Keith Newey agrees it is a dangerous spot. He thinks a roundabout would be the ideal solution but understands the New Zealand Transport Agency might be a bit stretched for funds at present with repairs underway on the Brynderwyn Hill section of State Highway One. He suggests some wide yellow lines painted across both One Tree Point and McCathie Rd. where they meet the highway might help. A speed sign asking drivers to slow to 60kph on State Highway 15 when there are vehicles waiting at the intersection like the sign at the Shoemaker Rd./ State Highway one, might also help.

NZTA had not replied to our query if an upgrade of this intersection is planned at the time we went to print..

**MAGIC TYRES**  
**Large selection of used & new tyres**  
**Car & Trailer Rims**  
**Ph. 438 3534**      **103 Port Rd., Whangarei**



## Six new Kāinga Ora homes in the Ruakākā Village

Continued from page 1.



Ruakākā School's Kapahaka Group entertained people in front of the new Kāinga Ora houses before neighbours and guests were invited to take a look inside

The six new homes were delivered by Kāinga Ora – Homes and Communities in partnership with the building company Landforce Developments.

They are all single-level, standalone houses with their own carpark and fenced outdoor space. The houses have spacious bathrooms and kitchens. They have been built to be highly energy efficient and have features such as wide doors and level entry access that make them fully wheelchair accessible. There are heat pumps installed in the living rooms and tin sheds in the back gardens.

Kāinga Ora customers affected by the proposed redevelopment on Tiki Place and Tamingi Street in Ruakākā, were prioritised for these new homes.

Offers were made based on the staged approach proposed for redevelopment. The age and condition of the existing homes was also taken into consideration, as well as personal circumstance.

Jo Haunui, Manager of Regional Placements for the housing agency acknowledged that the six new homes

would not accommodate whānau from the 17 to be demolished for the redevelopment. She said some had opted for relocation and she was finding Kāinga Ora homes for them in the places they wished to move to. Once she had people placed in the new homes, and had talked with all the tenants who will be affected by the redevelopment she would have a good idea of how many additional homes in Ruakākā would be needed and the hunt would be on.

Jo said the new homes will help meet demand for public housing in the Whangārei District.

“We know the stability and positive impact these homes will have on the whānau matched to these homes and we’re really excited to hand over the keys. Five of the six homes have already been tenanted to locals, and the first customers will start moving in this weekend,” she said.

Kāinga Ora plans to lodge a resource consent application for the redevelopment in Tiki Place, Tamingi St. and Peter Snell Rd in the coming days.

**BREAM BAY CURTAINS AND BLINDS**  
(INDOOR AND OUTDOOR) AND SHUTTERS  
PH 0204 632 432  
FOR A FREE IN HOME CONSULTATION CALL SUE  
www.breambaycurtainsandblinds.com  
bbcurtainsandblinds@gmail.com

**CALL SUE TODAY**  
**0204 632 432**

**BIG RED**  
TRUCKING

Owner /Operator Duncan Mackay



GENERAL CARTAGE SERVICE

Metal / Topsoil / Sand / Manure / Hay / Silage



WATER

Prompt Delivery And Reliable Service.  
Healthboard Approved Drinking Water Carrier.

**Call 021 070 8211**

**MOVIES IN THE PARK WAIPU**

**WAIPU PRIMARY SCHOOL**  
**4 - 7.30PM**  
**Saturday 16 March**

Bring a picnic and your seating  
Grab a bite from the foodtrucks  
Gates open 4pm | Entertainment from 4.30pm  
**Brave 6pm** (Disney | Pixar | PG | 93mins)  
**A fun free event for the whole whānau**

**Wow! MORE INFO AT WWW.WDC.GOV.TZ / WHATSON**

Brought to you by  
**Whangārei District Council**  
**Promote Waipu**



Thinking concrete but don't know where to start?

## Think Atlas Concrete

- We quarry the aggregate
- We manufacture the concrete
- We site visit to advise the best options
- We give you the choice of mix and colours
- We give a choice of local placers for you to choose
- We manufacture concrete to your requirements
- We stand by our product, you stand on it

**Atlas Concrete**  
**Your First Call for Concrete**  
**Ph: 0800 888303 - Brynderwyn**  
**or 432 5030 - Ruakaka**



## Police Report

### Double fatality at Paparoa rally sprint

It's been a sad time for the Bream Bay Police with three young lives lost in fatalities on our roads. Police attended a double fatality during a rally in Northland on Sunday, 25 February, which took the life of a promising young rally driver. The driver and co-driver died in the single-car crash at about 2pm during the Arcadia Road Rally sprint in Paparoa, held by Hibiscus Coast Motorsport Club.

The fatalities occurred when the car left the road and became submerged in a swollen river, according to a police serious crash investigator. Because the crash occurred while the road was closed, the accident will be investigated by WorkSafe and MotorSport NZ.

Tributes reveal the driver was 15-year-old Brooklyn Horan, who was showing promise behind the wheel despite his young age, and co-driver Tyson Jemmett.

### One person killed and another seriously injured in crash on SH1 at Mata

The following day on Monday 26 February at around 2.35pm Police were called to a two-vehicle crash on State Highway 1, between Totara Road and Hewlett. One person died at the scene. A second person received serious injuries and was transported to hospital.

### Stolen vehicle dumped off Golden Stairs Rd.

On 26 February a stolen vehicle was discovered dumped over a cliff on the Golden Stairs Road. Police checked the vehicle for occupants but found none.

### Eight family harm incidents

Over the fortnight Saturday 17 February to Saturday 2 March Bream Bay Police dealt with 8 family harm incidents – seven in Ruakākā and one in Maungaturoto.

### Motorbike rider facing numerous charges

A motorbike rider previously wanted for dangerous driving and speeding in Ruakaka and Waipu has been charged with an array of driving offences. A 31-year-old Mangawhai man will appear in the Whangārei District court for Failing to stop, Dangerous driving and driving whilst disqualified as well as a number of other charges which will be heard in a different court for similar offending on another date.

### Road Accidents

- On 19 February a vehicle slid off the Oakleigh/Paparoa Rd. and down a bank. There were no injuries but the driver was issued with an infringement notice.
- On Monday 26 February there was a single car vehicle collision on the Oakleigh/Paparoa Road. No one was injured but the driver has been issued with an infringement notice.
- On 24 February there was a single car collision due to a medical event on State Highway One. There were no injuries.
- Also on 24 February a motorcyclist lost control and crashed due to wet conditions on SH1 over the Brynderwyns. The motorcyclist escaped with no serious injuries.
- On 26 February there was a collision on McCathie Road, Ruakākā. No one was injured.
- On 28 February there was a two-vehicle collision on One Tree Point Road. No one was injured.
- On Friday 1 March a logging truck and trailer collided with a retaining wall and continued without stopping. The truck was pulled over by Police and an infringement notice was issued to the driver.

### Four Mental Health call outs

Over the same period Bream Bay Police were called to four mental health crises incidents. In all cases a Police presence was sufficient to calm the situation and the people involved were referred to mental health support agencies.



20ft Shipping Containers,  
 Hire offsite \$180 per month + GST + Delivery  
 Minimum 3 months,  
**SPECIAL**  
**1st month free for a minimum 6 month hire**  
 20ft Containers @ Kapa Rd, \$280/m  
 Enquiries Ph 0212722739 / 021432701  
 Email: [storagebreambay@gmail.com](mailto:storagebreambay@gmail.com)  
[www.storagebreambay.co.nz](http://www.storagebreambay.co.nz)



09 988 9049

[whittakersfunerals.co.nz](http://whittakersfunerals.co.nz) | [admin@whittakersfunerals.co.nz](mailto:admin@whittakersfunerals.co.nz)  
 25 Kapa Road Ruakaka 0171 | PO Box 241 Ruakaka 0151

## BE IN THE BOOK

To all Bream Bay residents

The Waipu Lions are re-publishing the local telephone directory. All Bream Bay residents can have their home or cellphone number in the book.

To be in the book:

Contact: [waipulions@gmail.com](mailto:waipulions@gmail.com) with the details:  
 Name, address and phone no.



## Concerns at proximity of new cell phone tower to homes

People with homes along at the top of Princes Rd. and on either side of Princes Rd along Marsden Point Rd. are unhappy that an eighteen- metre high telecommunications tower is being erected alongside their properties.

Kevin Wigmore said the tower is right in the middle of his view outside his front door and only around 30 metres away.

He received a notice in the mail back in September and wishes he had taken action then. More recently he got a second notice from the telecommunications company One NZ (formerly Vodafone) informing him the tower was about to be installed.

He had thought that there would be some form of public consultation before such a large tower was built in a residential area. He contacted the Whangārei District Council but was informed that under the Telecommunications Act no resource consent is needed to install this piece of infrastructure.

Another nearby resident Ricky Timms shares Kevin's concerns. He also wonders how something like this can be built in a residential area without any consultation with the people who live there. He said only a few people received letters warning them about the tower and there was no opportunity for residents to voice their concerns.

Ricky is unconvinced that cell phone towers do not pose a health risk and Kevin says that the evidence that they are safe is still "inconclusive".

American Cancer Society advice is "At this time, there's no strong evidence that exposure to Radio Frequency waves from cell phone towers causes any noticeable health effects. However, the society says that more research is needed."

Another concern is that the proximity of a large cell tower will have a negative effect on property values.

In 2022 Fortysouth bought the passive mobile tower infrastructure from One NZ and are responsible



A new cell phone tower under construction in Princes Rd

for building the towers that One NZ and other telecommunications retailers place their equipment on. It is Fortysouth which is building the Princes Rd. Tower.

Lisa Mulitalo Head of External Relations and Stakeholder Engagement for this company said, "This location was chosen after consulting with the Northern Transport Alliance as we required their approval of the location and the proposed design, which is being sited in road reserve. The site is adjacent the fire station and an empty council parking lot with a two-storey commercial building across the road.

Finding locations for cell sites can be challenging but we believe this location is a good outcome and as you can see from the coverage maps, there will be a vast improvement in mobile coverage and capacity for Ruakaka including the campground.

## How good is your cellphone coverage?

*Continued from Page 1*

improve its coverage hence a new cell phone tower in Plover St. One Tree Point and another currently being installed amidst some local controversy, at Princes Rd., Ruakaka.

However, One NZ has no plans for any new cell sites in Waipu in the immediate future.

Cell phone towers on wheels have been used to temporarily boost coverage at some holiday hot spots but these are expensive and it can be difficult to find a suitable location for them to park as many people object to cell phone towers near their homes.

OneNZ has announced a deal with Starlink, which it says will give its service users total coverage with no black spots. Many Bream Bay rural house-holders already use Starlink for a reliable internet connection. However Starlink's current satellites don't have the ability to connect to cellphones.

Spark has an online map, which purports to show how good its cellphone coverage at any given location in various shades of pink. Central Waipu is shaded in deep pink denoting good 4G coverage. Some residents living in the Ferry Rd. connected to the Spark cellphone network disagree.

The map shows Spark's coverage at Waipu Cove and west of the highway is very patchy.

*Map of cellphone coverage before and after new cell tow on page 8.*

## Rolled log truck blocks detour route

A log truck rolled on the Paparoa Oakleigh bypass road blocking the road in both directions on Monday morning 26 February, the first day of the scheduled closure of State Highway One over the Brynderwyn Hill.

The road re-opened at around 4.55pm with a 30km speed limit around the section of road where the accident occurred. In the interim traffic was detoured via Dargaville

State Highway One over the Brynderwyn Hill will open

for six days over the Easter period from 12.01am on March 28 to 11.59pm on April 2. The road will then close again from 12.01am on April 3 until 11.59pm on May 12 to complete the remaining work that requires a full closure. Detour routes are via Cove Rd through Mangawhai, Waipu and Largs Beach, or Paparoa Oakleigh Rd are recommended for light vehicles while heavy vehicles need to travel via Dargaville on SH12 and SH14.

## Bream Bay Garden Maintenance

Landscaping • Planting • Raised Beds

Decks • Hedges trimmed • Trees pruned

Weed control • Section Tidy Up

• Simple Building jobs •

Free Quotes

**NO JOB TOO SMALL**

One Offs, Weekly, Fortnightly or Monthly

**Phone Marcus 021 343 727**

## Building in Whangarei, Kaipara, Far North

### The Kidman 212sqm

**\$570,280 incl gst**

Includes: plans, consent, kitchen, appliances, tinted double glazed windows, tiles, carpet, blinds, heatpump.



Wayne Pickerill  
Managing Director

"Hi, I'm Wayne Pickerill, Managing Director and Project Manager for your new Fowler Home. Enjoy quality and all the benefits of dealing with an efficient, low overhead, nationwide company, where I will take a personal interest and be involved through to completion."



**FOWLER  
HOMES™**

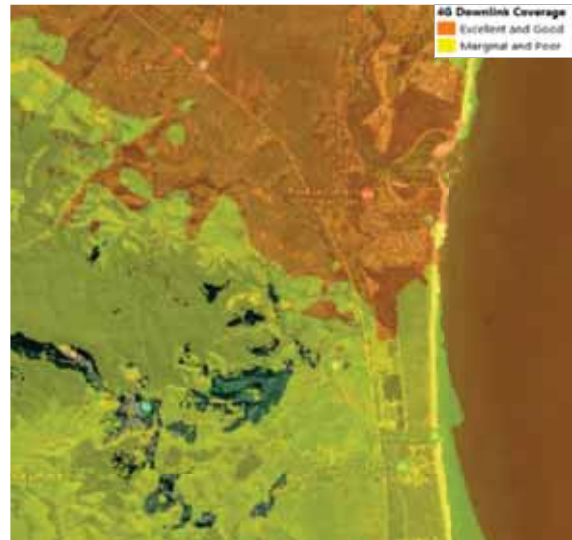
More designs at [www.fowlerhomes.co.nz](http://www.fowlerhomes.co.nz) or visit our office at 63 Walton St, Whangarei. Phone Wayne Pickerill 438 4840

## Vodafone cell phone coverage before and after the new cell site is built

Existing Coverage



New Coverage once site is built



## Wooden fence rammed four times



This newly built wooden fence surrounding a Kāinga Ora house at the corner of Tamingi St. and Peter Snell road was rammed four times by a vehicle on Thursday night 29 February.

The incident is of concern to people living nearby already reeling from a homicide in the vicinity last October.

Two men were arrested several days after the homicide and charged with firearms offences. Ethan Hokai was convicted of these charges and was awaiting sentencing on some unrelated charges at the time of the Bream Bay News latest enquiry. Local people have since told the BB News he has now been released.

The second man has been granted name suppression and is due to appear in the Whangārei District Court on 26 March.

There has been no word yet that anyone has been charged with causing the death of 24-year-old Teina Pickering who died in the street in the early hours of 12 October.

Flowers were left alongside a power pole in Peter Snell Road on the same evening as the fence was smashed.



**ADVANCED**  
EARTHWORKS  
we create your future

We Specialise in Civil and Siteworks in  
the Whangārei-Ruakaka-Waipu-Kaipara Areas  
P: 021 198 8288 E: arne@advancedearthworks.co.nz

## Ruakaka Stationery & Gifts



**Ruakaka Town Centre**

Shop local for all your needs:

Stationery, Books, Toys, Magazines  
Greeting Cards, Clothing,  
Gifts & Souvenirs

**Phone**  
**432 8104**

New Zealand Post

**Open Saturday until 7pm.**



## Geotech investigation needed for Shoemaker Rd. slump



Motorists have been gingerly driving around this big slump in the road near the top of the Shoemaker Road hill for more than a year

This big slump near the top of the Shoemaker Road hill has been reducing the road there to a single lane since the storms of last summer.

We asked the Whangārei District Council when it would be repaired.

Jeff Devine Strategy and Planning Manager of the Northland Transportation Alliance explained, the NTA is having "Geotech investigations undertaken in order to determine the appropriate solution.

He said, "Unfortunately, it is one of many. However we are managing the site temporarily to maintain safe passage."

"We will continue to maintain the site until final repairs are approved."

Recently a Council contractor applied new metal to the single lane still available to traffic which had become very potholed.

## Waipu RRRA asks that the hearing on Waipu Gateway Service Centre application be held in Waipu

The Whangārei District Council received 52 submissions, 43 of these in opposition and nine in support to the Waipu Gateway Service Centre when submissions closed on 5 February.

The Council is now waiting on a planner's report before setting a date for a hearing by an independent commissioner. This will be posted on the Council website once it is decided.

Vaco Property Investments Ltd. Waipu whose sole director is Antony Ivo Americh of Taupaki, is proposing to build a *service centre*, comprising a BP petrol station, a fast food and other food outlets with additional space for light industrial and commercial activities on 5.9 hectares currently zoned for Rural Production at the corner of Millbrook Rd and State Highway One

Vaco Developments is also seeking consents for the development from The Northland Regional Council, which received 19 submissions on the application, 14 in opposition, three neutral and two in support.

Submitters in opposition were concerned the development would:

- Destroy the charm of the small historic town of Waipu
- Waipu's existing business would suffer with fewer visitors into the town.
- Agricultural land would be lost
- The development would cause light pollution
- There would be wastewater disposal and other environmental issues
- Litter from the commercial centre would end up in waterways

Submitters who supported the development said it would provide competition to drive down fuel prices and that a commercial business service area is needed for Waipu.

**BREAM BAY  
CURTAINS  
AND BLINDS**  
(INDOOR AND OUTDOOR)  
AND SHUTTERS

PH 0204 632 432  
FOR A FREE IN HOME  
CONSULTATION  
CALL SUE

www.breambaycurtainsandblinds.com  
bbcurtainsandblinds@gmail.com

CALL SUE TODAY  
0204 632 432



**BIG RED**  
TRUCKING

Owner /Operator Duncan Mackay



**GENERAL CARTAGE SERVICE**  
Metal / Topsoil / Sand / Manure / Hay / Silage

---



**WATER**  
Prompt Delivery And Reliable Service.  
Healthboard Approved Drinking Water Carrier.

Call 021 070 8211



**SoftWash  
ASAP**  
0212737800

- Soft chemical house wash
- Roof wash & treatment
- Driveway, deck & path pressure washing
- Spider treatment
- Gutter cleaning
- Complementary window wash

**FREE spider treatment with any house wash booked in March! (Usually \$250+GST)**

softwashasap@gmail.com  
www.softwashasap.co.nz  
FB: SoftWash ASAP  
Serving Bream Bay & Kaipara





**Bayleys proudly welcomes Team Brad McKegg to the dynamic Bream Bay office.**

This high-performing team is well-known to the Bream Bay market and is recognised for their tireless work ethic and dedication to their clients. Leaders in their field, Brad McKegg and Cara Coats have decades of combined experience and a track record that speaks for itself. Personal Assistant Siobhane Brightmore supports Brad and Cara throughout the sales process, ensuring the highest customer service and satisfaction levels.

**Welcome to the team, Brad, Cara and Siobhane!**

**If you're considering selling your property, contact Team Brad McKegg—your local Bream Bay specialists.**

**Brad McKegg**

021 711 691 | [brad.mckegg@bayleys.co.nz](mailto:brad.mckegg@bayleys.co.nz)

MACKYS REAL ESTATE LTD, BAYLEYS, LICENSED UNDER THE REA ACT 2008

**Cara Coats**

021 651 517 | [cara.coats@bayleys.co.nz](mailto:cara.coats@bayleys.co.nz)

MACKYS REAL ESTATE LTD, BAYLEYS, LICENSED UNDER THE REA ACT 2008



**ALTOGETHER BETTER**

**Residential / Commercial / Rural**



## Laura Andrews is heading off on another polar adventure

Laura Andrews will be leaving in April for another adventure – a twenty day, 400-kilometre ski expedition across the sea ice of the North West Passage at the northern tip of Canada.

She will be accompanied by Marthe Brendefur of Norway who she shared a tent with on her expedition with the Antarctic Heritage Trust to the South Pole over the summer of 2022/2023.

In the Canadian Arctic they are expecting temperatures of minus 30°C, moving sea ice and perhaps even polar bears!

Laura said the North West Passage is an area rich in history, including the ill-fated voyage of British exploration led by Captain Sir John Franklin in 1845. The two ships Captain Franklin commanded became trapped in ice and all their officers and crew -129 souls in total perished in the Arctic winter.

So it's a bit worrying to learn that Laura and Marthe are taking this trip on their own. The expedition to the South Pole was organised and funded by the Antarctic Heritage Fund and they were accompanied by a third young explorer: Mike Dawson

as well as a guide Bengt Rotmo and expedition leader Nigel Watson who chairs the Antarctic Heritage Trust who has vast experience in polar regions.

Laura explained that they will be travelling from Gjoa Haven to Cambridge Bay, between two Inuit communities, which have search and rescue teams equipped with snowmobiles, seaplanes and dog sledges. While they hope they won't need to use them they will be carrying satellite mobile phones and GPS devices with satellite messaging capability. They are also considering taking a dog along to warn them of the presence of polar bears. As the sea ice is melting due to global warming the bears are coming in closer to human settlements so this is something they will need to be extra cautious about.

Laura said, "We will be careful not to camp near open water, where polar bears fish."

They will also be carrying flares and as a firearm to use in a worst-case scenario. Marthe has spent time with the Norwegian military and is competent at handling guns.

As neither have dog sledging experience, the dog would be walking alongside the two women who will themselves be pulling sledges loaded with all their food and equipment as well as food for the dog.

While they gained many skills on the South Pole expedition, Laura said skiing on Arctic sea ice, which is constantly moving, is a "whole different ball game." This trip is mostly self-funded and is a training exercise for an 80-day expedition Laura and Marthe hope to undertake next year to the North Pole.

Laura said that if you research polar exploration history women don't feature very much and this is something she and Marthe hope to change.

But it's not going to be easy. To begin with it will be expensive to fly to the remote locations where their Arctic treks will begin and the geo political situation at the North Pole is complex with eight countries: Canada, Denmark, Finland, Iceland, Norway, Sweden, Russia, and the United States all having inter-



Laura and Marthe at the South Pole

ests there.

Laura said, "there is something about the pursuit of challenge – just having a small goal in front of you that you are moving towards."

She recently competed in the NZ Coast to Coast multisport Challenge in a team with her two younger cousins. Laura took the kayaking leg with cousin Jack aged 25 did the bike section and 21 year old Jack did the run.

"We had an awesome time and I think they have caught the bug," she said

She will leave for her North West Passage adventure on 16 April, three days after her 30th birthday.

Weather permitting she and Marthe will begin their journey on 21 April.

They will post updates of their progress on Instagram under the title Project North Pole.

Laura grew up in Waipu where her parents Larry and Glenice still live and is a former Head Girl of Bream Bay College.



Marthe pulling her sledge over sastrugi - snow formations formed by wind





Waipu River Walk working bee is on every Thursday from 530pm. We will be meeting at the entrance of the Waipu River Walk to weed the area and tidy up the path surroundings.

We would love as much help as possible! Please join us, bring your friends and/or whānau, some gloves, your weeding and trimming tools and skills.



Monday, Wednesday,  
Thursday, Friday &  
Saturday 10am - 1pm.  
Tuesday 10am - 4pm.  
Phone 432 0375



RUAKAKA COMMUNITY LIBRARY  
Takutai Place, Ruakaka  
432 8408  
Mon - Fri 9:30am-3:30pm  
Sat 9am-1pm

JP Service available  
Saturdays 10am - 11am.

## Biking and walking community of One Tree Point and Ruakākā right behind shared path proposal



Cyclists lined up to climb on board the big log truck supplied for the occasion by Newey Transport Ltd. at the Bike Northland biking information stall set up in conjunction with the Marsden Cove Market on Sunday morning 24 February.

### Love being active?

**24/7 gym**

- no lock in contract,
- no admin, no joining fee
- \$10 per week
- Ladies only gym
- Unisex gym
- Casual gym \$2 per day

9 Takutai Place  
Ruakaka  
Ph: 432 7962

Opening hours:  
Mon, Tues, Wed, Fri  
5am to 2pm  
Thur 8am to 6pm

**Come and join us at the  
Ruakaka Recreation Centre**

Lounge available for hire - up to 134 people  
Meeting room for hire - up to 15 people  
For events kitchen facility available

Very  
reasonable  
rates

Activities at the Ruakaka Recreation Centre			
Activity	Day and Time	Cost	Contact
Fit for life Ruakaka class	Monday 10am to 11am	\$5	AnnMarie 0211693115
Fit for life Ruakaka class	Wednesday 11am to 12pm	\$5	AnnMarie 0211693115
Playgroup gymnastic classes	Tuesday 10.15am-11.30am		
Preschool gymnastic classes	Thursday 2pm - 2.45pm	\$10 per session	Nadine 029 776 7754
Recreational gymnastics	Thursday 3pm - 3.45pm, 4pm - 4.45pm for 5-8 years	\$15 per session	Nadine 029 776 7754
Recreational gymnastics	Thursday 5pm - 6pm for 8 years +	\$15 per session	Nadine 029 776 7754
Zumba Gold	Tuesday 8am to 9.45 am	\$7	Roz rothzumba@gmail.com
Zumba Gold	Thursday 9.30am to 10.15am	\$7	Roz rothzumba@gmail.com
Stretching classes	Thursdays 11am to 12pm	\$5	Lu 4328941
60's up	4th Friday of month 10am to 4pm	\$12 annually fee	Joy 021491887
petanque or indoor bowling	Wednesday 1pm to 4pm		Sue 021850285
Music club	1st Monday of month 7pm to 10pm	\$5	Fulco 0274719428
Zumba	Monday 8.45am to 9.45am	\$8	Janine 021437840
Zumba	Wednesday 8.45pm to 9.45pm	\$8	Janine 021437840
Zumba	Friday 4.45pm to 5.45pm	\$8	Janine 021437840
casual gym	Monday to Friday 8am to 2pm	\$2 per day	Christine 4327962
casual Squash	Monday to Friday 8am to 1pm	\$5 per hour	Christine 4327962

We are also home to Bream Bay Squash club and Bream Bay United Association Football club

It is clear to us that the biking and walking community of One Tree Point / Ruakaka are fully behind a safe shared path between Marsden Cove and Ruakaka said Grant Brown of the Shared Path group behind this initiative after the Pedal to the Market morning held at Marsden Cove on Sunday morning 24 February.

Grant said the group's email database has now grown to 164, with many of these representing families.

Bike Northland had set up a bike information stall alongside the Marsden Cove Market and gave advice about basic bike maintenance, set up activities to help develop bike riding skills.

Newey Transport brought along one of its big logging truck and trailer units and invited cyclists to climb on board to see a truck driver's perspective. Bike placed in front of the truck and on its left side were not visible from the driver's seat.

Grant said he and many others were totally shocked to see the lack of vision a truck driver has when driving a rig of that size and he has contacted Whangarei MP Dr. Shane Reti raising the safety issues for cyclists and walkers between One tree Point and Ruakaka village. Dr. Reti's PA had replied with a promise to raise the issue with the Minister of Transport Simeon Brown.

And last week the Shared Pathway group met with newly appointed project lead for Northland Taitokerau Regional Trails to see how shared path trails planned for Ruakaka and One Tree Point could fit into the big Northland wide picture.

## Waipu Presbyterian Parish



### Contacts:

Minister - Tom Waight - 432 0534  
Mainly Music - Sharon Smith - 432 1050  
Toy Library - Julie Malone - 432 0388  
Church Hall Hire - Cally James 432 0534

### Family Welfare & Foodbank:

Co-ordinator - Helen Matheson - 432 0239  
Budgeting Advice - Bruce Matheson - 432 0239  
The Crossroads Trust (financial support)  
Lyn Jones - stevolyn@gmail.com

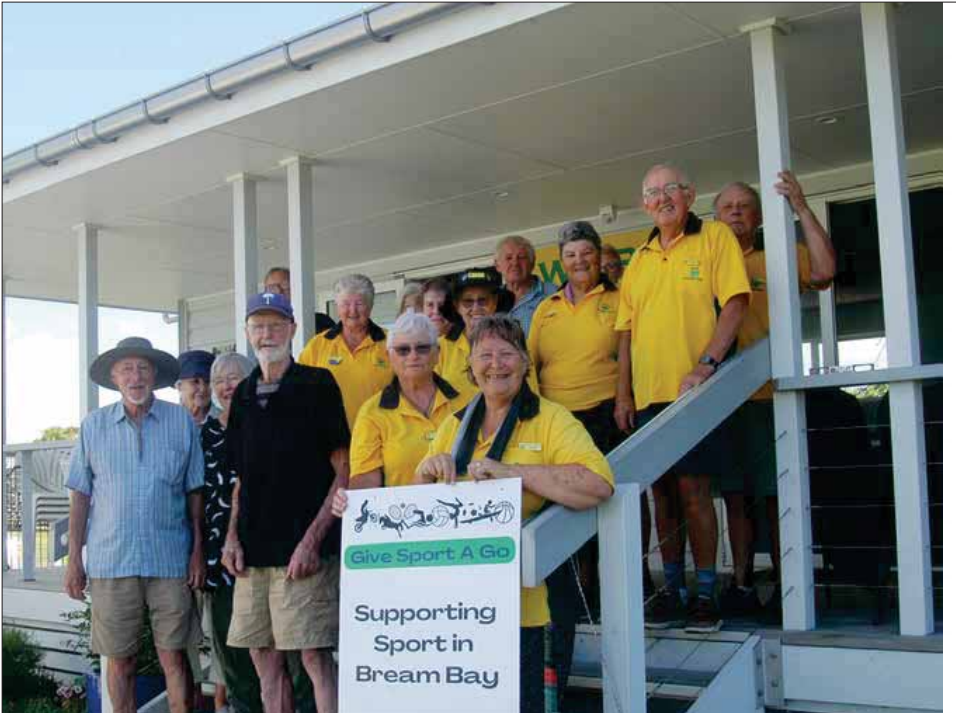
### Sunday Services

Ruakaka - Camellia Ave - 8.45am  
Waipu - 50 The Centre - 10.15am

*Working with you  
- for your Community*



# Have a Go Sports Festival for people of all ages



There were lots of new faces at the Waipu Croquet Club's Have a Go morning on Saturday 25 March.



Everyone had fun trying out the circuit activities at the Waipu Netball Club's Have a Go event in the Waipu Celtic Barn on Wednesday afternoon 21 February.

The Bream Bay Sports Trust's Have a Go Sports Festival continues this week with The Marsden Bay Yacht and Boat Club inviting adults and accompanied children eight-years and over to a session from 5pm at the Marsden Cove Marina Ph. Helen 021 077 2332 for more information, Marsden Ladies Badminton drop in and have a go invitation every Wednesday in March from 9.30am at the Church Hall in Tamingi St, Ruakāka Ph. Rhondra 021 167 2971 Bream Bay Football Fun football skills exercises and mini games for ages 5 - adults from 10am to 12noon on Saturday 9 March at the Ruakāka Sports Grounds, Takutai Place, contact Andrea 021 120 3633 and Ruakaka Indoor Bowls on 19 and 26 March from 10am at St Pauls Church, Tamingi St., Contact Sue 021 850 286.



**Waipu**  
*Our Values:*  
*Integrity Respect Teamwork*  
*Compassion Excellence*

Volunteers needed for our Waipu shop  
Throughout the week and on weekends

Donated goods welcome  
Phone 432 1342 for pickups.

MARSDEN POINT HIGH TIDES				
	AM		PM	
Thu 7 March	5.21	2.4	5.34	2.4
Fri 8 March	6.23	2.5	6.40	2.5
Sat 9 March	7.21	2.7	7.42	2.6
Sun 10 March	8.15	2.8	8.38	2.7
Mon 11 March	9.07	2.9	9.32	2.8
Tue 12 March	9.57	3.0	10.23	2.9
Wed 13 March	10.46	3.0	11.13	2.9
Thu 14 March	11.35	2.9	~	~
Fri 15 March	12.03	2.8	12.24	2.8
Sat 16 March	12.53	2.7	1.15	2.6
Sun 17 March	1.46	2.6	2.07	2.5
Mon 18 March	2.43	2.5	3.03	2.4
Tue 19 March	3.43	2.4	4.03	2.3
Wed 20 march	4.46	2.4	5.06	2.3
Thu 21 March	5.46	2.4	6.06	2.3
Fri 22 March	6.39	2.4	7.01	2.3

## Weeding Wednesdays

**Help Bream Bay Coastal Care  
Keep Ruakaka Wildlife  
Refuge free of invasive weeds**

Meet at 8.30am. each Wednesday  
at the Bream Bay Drive entrance  
(on left past  
Oasis store and before the motel)

Weeding for just two hours



## EVERY THURSDAY

BREAM BAY  
**Link**

## MORNING

9.00am	Departs	Kaiwaka Kaiwaka Hall
9.15am	Departs	Mangawhai Village Village Shops Bus Stop (by restrooms)
9.20am	Departs	Mangawhai Heads I-Site
9.35am	Departs	Langs Beach Corner of Wairahi and Cove Roads
9.40am	Departs	Waipu Cove Beach Car park
9.50am	Departs	Waipu Monument Bus stop
10.10am	Departs	Rukākā Peter Snell Road (opposite Takutai Place)
10.50am	Arrives	Whangārei Rose Street Bus Terminus

\*For travel within Whangārei see CityLink Whangārei timetable  
www.citylinkwhangarei.co.nz  
or get your timetable from the Rose Street office.

## AFTERNOON

3.00pm	Departs	Whangārei Rose Street Bus Terminus
3.40pm	Departs	Rukākā Peter Snell Road (opposite Takutai Place)
4.00pm	Departs	Waipu Monument Bus stop
4.10pm	Departs	Waipu Cove Beach Car park
4.15pm	Departs	Langs Beach Corner of Wairahi and Cove Roads
4.30pm	Departs	Mangawhai Heads I-Site
4.35pm	Departs	Mangawhai Village Village Shops Bus Stop (by restrooms)
4.50pm	Arrives	Kaiwaka Kaiwaka Hall



OPERATED BY  
**LEABOURN**  
Ph: 0800 994 404  
E: office@leabourn.co.nz

## FARES

	One Way	Return
Kaiwaka	\$7.00	\$10.00
Mangawhai	\$7.00	\$10.00
Mangawhai Heads	\$7.00	\$10.00
Langs Beach	\$7.00	\$10.00
Waipu Cove	\$6.00	\$8.00
Waipu	\$6.00	\$8.00
Rukākā	\$5.00	\$7.00

## ROUTE DESCRIPTION

Kaiwaka/Mangawhai Road,  
Molesworth Road,  
Mangawhai Heads Road, Cove Road,  
The Centre Waipu, Nova Scotia Drive,  
SH1, Marsden Point Road,  
Peter Snell Road, Marsden Point Road,  
SH15A, SH1, Otaika Road,  
Maunu Road, Walton Street,  
Rose Street Bus Terminal.

If you would like to be picked up  
elsewhere along the route,  
please phone Leabourn's  
to arrange this on the  
Wednesday before  
you want to travel.

CONTRACTED TO:  
**Northland  
REGIONAL COUNCIL**

For service updates visit:  
**www.buslink.co.nz**  
Feedback to buslink@nrc.govt.nz

## Captive rearing trials at Auckland Zoo help to boost Tara Iti numbers

Thirteen fairy tern chicks have fledged so far this year, well up on the number of chick survivors in recent year. Another five chicks are still to take to the skies. Department of Conservation Senior biodiversity ranger Alex Wilson said factors which have helped are the absence of extreme stormy weather, the expansion of predator control at the nesting sites and the continued refinement of management strategies. Hand rearing of some chicks at the Auckland Zoo has helped to bolster the numbers. Tara Iti



Photo by DOC Ranger Darren Markin

are hatched and hand reared at the zoo and then transferred to aviaries at Te Arai, where the chicks hone their flying and fishing skills in a natural setting. Of the 13 fledglings, four were part of these captive rearing trials which DOC and Auckland Zoo work in partnership to implement. Richard Gibson, Auckland Zoo's head of Animal Care and Conservation, said the hand-reared chicks "exhibit promising signs of interaction and adaption." Tara Iti were once widespread but now breed only at Papakanu Spit, Pakiri Beach, Waipu, Mangawhai Sandspit and Te Arai Stream mouth. A single pair of fairy tern nested on the Waipu sandspit and successfully raised one chick.

## Pukapuka Party postponed

This year's Pukapuka Party has been postponed, as the organisers haven't been able to secure enough funding to run it in March. The popular annual event, which sets up free, fun learning stalls and activities for children and their parents under the canopy at Bream Bay College has been re-scheduled for term 3 - Saturday 21st September and will be held in the afternoon to avoid clashing with winter sports. The Bream Bay Learning Community group, which runs the Pukapuka Party is also looking for new recruits for its organising committee and more volunteers to help on the day. Anyone interested in can make contact by emailing: bream-aylearningcommunity@gmail.com

With You every step of the way

**CENTURY 21** Jean Johnson Realty

Sales and Property Management  
Dargaville, Whangarei, Bream Bay  
W.dargaville@century21.co.nz P 09 439 7575

**THE MAINTENANCE**  
www.themaintenance.co.nz

- ❖ Chemical and non-chemical house washing
- ❖ Window and house cleaning
- ❖ Painting and staining – exterior house, decking and fences
- ❖ Water blasting - decks, driveways and courtyards
- ❖ Clean guttering and downpipes
- ❖ Pest control and spider spraying
- ❖ Tree trimming with extension saw

**Phone now for a FREE QUOTE**

REVITALISE ❖ PRESERVE ❖ PROLONG ❖ MAINTAIN

**TONY 021 196 2949 OR MELISA 021 075 6770**

As seen on Grand Designs 2019

**COASTAL CONSTRUCTION PROJECTS**

0274 320 007

REGISTERED MASTER BUILDER QUALIFIED TRADESMAN CARPENTERS MARCUS@CCP.NZ WWW.CCP.CO.NZ



## The animated movie Brave on a big outdoor screen

Promote Waipu and the Whangārei District Council have combined forces to run a free outdoors movie event in the grounds of Waipu Primary School.

People are invited to bring a picnic or to buy something to eat from the food trucks that will be there. The gates open at 4pm with entertainment from 4.30pm. The movie Brave begins at 6pm and runs for 93 minutes. Brave is an animated fantasy film made by Pixar Studios and released by Walt Disney Pictures in 2012. It tells the story of a Scottish Princess, Merida, the daughter of Scottish King Fergus (voice by Billy Connolly, and Queen Elinor (Emma Thompson.) There are some grumpy Scottish Lords, a witch and a curse that needs to be undone.

## Rock'n Blues in Waipu

Coming up at Tahamoana Farm, on Saturday 16 March from 7pm. *Rock 'n Blues in Waipu* with the four piece blues band *Beats Working 24*, followed by classic rock covers band *Caged*.

There is ample parking, comfort facilities, covered seating and large tiered grass seating surrounded by trees, overlooking Bream Bay. Camping is also available but must be prebooked.

Tickets to the show cost \$38 and are available from eventfinda and at the gate. <https://www.eventfinda.co.nz/2024/rock-blues-in-waipu/whangarei.amp> Tahamoana is located 566 Cove Rd. at Waipu Cove.

## Stars in Your Eyes competition

Waipu's own version of the popular *Stars in Your Eyes* musical impersonation show is coming to the Coronation Hall in August.

The organisers are looking for talented singers and bands who can entertain and wow an audience with impressions of their favourite star or stars. It will be more than just a talent show. Contestants must be able to convince an audience that they really are the singer or bands they are impersonating.

The production team is calling for entries in what will be a first of its kind for Waipu. The event will be a fundraiser for the Waipu Lions.

If you, or a group of friends dream of becoming world famous in Waipu and you think you fit the bill then apply to [starsinyoureyeswaipu@gmail.com](mailto:starsinyoureyeswaipu@gmail.com) for details and entry forms. Auditions will be held in April and contestants must be over sixteen years of age. You need to be able to attend all auditions and rehearsals. Dates to be announced.

## WHAT'S ON IN BREAM BAY

- **BREAM BAY SPORTS TRUST GIVE IT A GO FESTIVAL** From Saturday 10 February to Sunday 10 March See calendar page 8
- **REELING DANCING IN WAIPU CORONATION HALL** Every second Friday of the month, 7.30 to 9.30pm. \$5.00, under 12-year-olds free. All ages and families welcome. Lively dancing to Scottish jigs and reels. Easy to pick up. Bring water bottle, something cold and small to share for supper. Air conditioned hall. Next night: Friday 8 March.
- **MARSDEN YACHT AND BOAT CLUB'S ANNUAL CHICKEN RUN** Yacht Race. Saturday, 9 March, 10.30a.m. Starts off the Clubhouse at 10.30am. Sails around Bream Islets and West Chicken Island and back to the Clubhouse. Good viewing of the Start from the Clubhouse.
- **WAIPU BOUTIQUE SUNDAY MARKET** Next on Sunday 10 March From 9am to 1pm in the Coronation Hall
- **MOVIES IN THE PARK WAIPU** Brave by Pixar Studios. Saturday 16 March at Waipu Primary School. Gates open 4pm. Entertainment from 4.30pm. Movie at 6pm. Food trucks in attendance. A free event funded by the Whangārei District Council and Promote Waipu.
- **ROCK'N BLUES WAIPU** at Tahamoana Farm 566, Waipu Cove on Saturday 16 March. Bands: *Beats Working 24* and *Caged*. Tickets \$38 at the gate or from Eventfinda. From 7pm
- **ONE TREE POINT ARTISAN MARKET** Next on Sunday 17 March. 9am - 1pm. One Tree Point School quadrant and field. Fundraising for Whangārei Hospital Children's Ward.
- **MARSDEN COVE MARKET** Next on Sunday 24 March 9.30 -2pm at the Marsden Cove Marina
- **WAIPU EASTER CARNIVAL** Saturday 30 March. 9am -2pm Caledonian Park
- **WAIPU MUSEUM** 36, The Centre, Waipu. Open seven days 10am-4pm .
- **THE KAURI MUSEUM.** The Kauri Museum is open 9am-5pm every day except Christmas Day. 5 Church St., Matakohē. See more at [www.kaurimuseum.com](http://www.kaurimuseum.com)

## TRADES & SERVICE DIRECTORY Ph 09 432 0209

**LAWSON**  
**CARTAGE**

FOR ALL YOUR  
EARTHWORKS & CARTAGE NEEDS  
*Suppliers of: topsoil, compost, woodchip,  
bark, sand, pebble, rocks and firewood.*  
**Ph/Fax 09 432 8418 or 021 768 940**  
458 Marsden Point Rd. PO Box 142, Ruakaka 0151  
email: [lawsoncartage@xtra.co.nz](mailto:lawsoncartage@xtra.co.nz)

**BREAM BAY  
ACCOMMODATION**

**RUAKAKA**

**STUDIO - HOLIDAY HOMES - B&B**  
BOOK ONLINE OR PHONE  
**Ph: 09 432 7025 Mob: 021 2722 739**  
website for online bookings: [www.breambayaccommodation.com](http://www.breambayaccommodation.com)

**WORTHY AG**



**SMALL BLOCK MULCHING**  
Phone COLIN (Joe) 0274916983

**Bream  
Bay  
Tax**

**Tax  
Accounting  
Business support**

Free first consult.  
Fixed price packages  
Supporting Bream Bay businesses

**Robb MacKinlay 027 540 7859**  
[robb@breambaytax.nz](mailto:robb@breambaytax.nz) [www.breambaytax.nz](http://www.breambaytax.nz)



**BARFOOT  
THOMPSON**

I Love Selling Bream Bay!

**Angelique Hartnett**  
Coastal & Lifestyle Sales / AREINZ  
0274 356 411 / 09 435 5914 P  
[a.hartnett@barfoot.co.nz](mailto:a.hartnett@barfoot.co.nz) E

**GREG STEWART**  
**Qualified Builder...License # 106626**



Over 45 years experience  
Prompt Service  
**Ph 021 317 555**  
Email [gpstewart56@gmail.com](mailto:gpstewart56@gmail.com)  
SMALL ALTERATIONS..  
DECKING..FENCING  
BUILDING REPAIRS..HANDYMAN  
**NO JOB TOO SMALL GIVE ME A CALL**

**Deadline for next issue - Wednesday 13 March**

# TRADES & SERVICE DIRECTORY

Ph 09 432 0209

**NORM FAGO**  
OWNER / OPERATOR

**Act Now**  
**Car Rentals**

M: 0274 362 480  
Nz Freephone: 0800 362 480  
E: info@actnowrentals.co.nz

**From \$45 per day - Min 4 days**  
Based in Ruakākā

**Ph: 09 432 0123**

**BREAM BAY GLASS**

FOR ALL YOUR GLASS NEEDS



**Mob: 0274954548**

**AMC**  
AUTO MOBILE GLASS

**FAST WINDSCREEN REPLACEMENTS & CHIP REPAIRS**

- Mobile service or come to our workshop
- Ultra competitive pricing. • Insurance claims welcome.
- Windscreen replacement in under an hour.

**Phone Conrad on 022 036 2916**  
2/17 Gumdigger place.

**BRADLEY**  
**EARTHWORKS**

- POND CLEANING • DRIVEWAYS • RACEWAYS
- LAND CLEARING • TREE REMOVAL • ROADING AND MORE!

**CALL ME TODAY FOR ALL YOUR EARTH & TREE WORKS**  
**PHONE ROY 027 374 5090 WAIPU**

**ABSOLUTE CONCRETE**

[www.absoluteconcrete.co.nz](http://www.absoluteconcrete.co.nz)  
CULVERT PIPES  
Spun and reinforced  
Crane truck delivery  
Drainage Merchant - Hardware Store  
Email: sales@absoluteconcrete.co.nz  
Phone (09) 431 2211  
KAIWAKA

**MACSWAY**  
**SCAFFOLDING LTD**

WE BUILD, HIRE, ALLOY MOBILES, TEMPORARY FENCING, & SHRINKWRAP

Ph: 09 432 7643 • 0274 726 772  
macsway@xtra.co.nz Kepa Road, Ruakaka

**O'MALLEY CONTRACTING LTD | CONCRETE SPECIALISTS**

- FOUNDATIONS
- HOUSE SLABS | STAIRS
- RETAINING WALLS
- DRIVEWAYS | CARPARKS
- EXPOSED AGGREGATE
- COLOURED CONCRETE
- COMMERCIAL | RESIDENTIAL
- LICENCED BUILDING PRACTITIONER

Free No Obligation Quote

FAMILY OWNED & OPERATED

021 2200 198 | [OMALLEYCONTRACTING.COM](http://OMALLEYCONTRACTING.COM)

**Bream Bay Concrete Ltd.**

Free Quotes • Reliable Service • Quality workmanship

- Concrete pads
- Shed floors
- Pathways
- Home floors
- Driveways
- Concrete cutting
- Excavation works
- Retaining walls
- Paving fences
- Profiles for homes & sheds
- Subfloors & boxing

**Mark Royals Ph: 432 0107 Mob: 0274 433 130**

**BREAM BAY ELECTRICAL**

Wiring Safe Homes And Businesses Throughout Northland

RESIDENTIAL COMMERCIAL INDUSTRIAL

0800 223 555 027 35 33 555  
[www.breambayelectrical.co.nz](http://www.breambayelectrical.co.nz)

24H SERVICE



**BAYSIDE CONTRACTORS**

RESIDENTIAL EARTHWORKS • HOUSE SITES  
DRIVEWAYS • TRENCHING & DRILLING

Contact Shane  
027 3019 480  
[admin@baysidecontractors.co.nz](mailto:admin@baysidecontractors.co.nz)

**TC ENGINEERING**  
Metalwork Specialists

Stainless and Aluminium Welding and Bespoke Fabrication

Gates and outdoor furniture. Marine repairs and fabrication.  
Onsite welding for farm repairs and modifications.  
[www.tcengineering.nz](http://www.tcengineering.nz) 021 145 7075 or 021 203 0309

**Tractor Mulching**

100hp tractor with high bodied yllails, mulcher, park finishing mowers, slashing  
Gorse & blackberry spraying

Also mechanical tractor repairs

Phone Bain McGregor  
0274 979 013  
or 09 432 0527



**Grant McLean**  
Stock Agent for Bream Bay

Ph 021 7758 48  
Email: [skincarla@xtra.co.nz](mailto:skincarla@xtra.co.nz)

All aspects of stock sales including:  
• dairy beef • bobby calves • store cattle • live export heifers  
• sheep • pigs • supplying stock for slaughter

Also caters for small block holders.

**Carrfields** **Livestock**

**Ruakaka Motors**

Mechanical and Auto Electrical Repairs and Servicing

Monday - Friday 7.30am - 5pm  
Tyres and Batteries  
WOF testing Gold Card discount  
Drop off, pick up service available in Waipu

**Phone 432 7233**

**PARADISE QUARRY**

**PARADISE QUARRY STONEMASONS**

Specialists in stunning stone for landscape  
Suppliers & installers of northland's own schist for all your stonemasonry & landscaping Requirements

(09) 432 2722 or GEOFF (021) 972 139  
[www.paradisequarry.com](http://www.paradisequarry.com)

**SUSAN JACOBS PAINTING**  
INTERIOR • EXTERIOR  
027 370 5339

**BLIND PRO**

Blinds • Awnings • Shutters

Indoor blinds and outdoor screens

Call us today for a free, no obligation consultation and quote

ph 09 423 9661  
website [www.blindpro.co.nz](http://www.blindpro.co.nz)  
email [info@blindpro.co.nz](mailto:info@blindpro.co.nz)

**McQUINN PUMPS**

How's Business? ... It's Pumping!

24/7 SALES, SERVICE & INSTALLATION | PUMPS & WATER TREATMENT  
PHONE SUPPORT AVAILABLE

0800 627 846  
PHONE FREE

NOW AT 72 KIOREROA ROAD  
—ALONG FROM RD1 & ITM

## Deadline for next issue - Wednesday 13 March



# TRADES & SERVICE DIRECTORY

Ph 09 432 0209



**HANSEN**  
Drainage & Earthworks


**DRAINAGE:**  
\* Septic Systems \* Water Tanks \* Truck & Digger Hire \*  
\* Subdivisions \* Domestic \* Commercial \*  
Certifying Drainlayers

Licensed Contractor for  
Waste & Drainage Work



**EARTHWORKS:**  
\* Subdivisions \*  
\* Farm Work: Effluent Pond Design & Build, Dams, Races \*  
\* House Sites \* Driveway Prep \* Lawns \* Roading \*

P. 09 432-7877 M. 027-432-7877  
E. karl@hansende.co.nz



**Team James Alexander**

JAMES ALEXANDER 021 878 178  
SALESPERSON & AUCTIONEER

ASHLEIGH LOUISE 027 733 5703  
SALES ASSOCIATE

Licensed Salesperson: The Real Estate Shop Limited Licensed (REAA 2008)

## Small Building Jobs & Repairs

- Letterboxes • Curtains • Smoke alarms,
- Clothesline • Decks • Fences,
- Kitchen and bathroom repairs
- Rental property maintenance

Call Tony on 021 196 2949

**Diggermate**  
OPERATING AND HIRE

CALL GEORGE  
027 214 5501



**GREEN TEAM**  
A FORCE OF NATURE

## This Space Now available

\$42.80 gst inclusive  
or for regular customers  
(six or more insertions)  
\$38.50 gst inclusive

**Long Run Roofing & Cladding**  
Re-roofing & Spouting  
Edge Protection



Terry Mounsey  
021 562 269  
wetaroofing@xtra.co.nz

**RELIABLE &  
PROFESSIONAL SERVICE**

**STORAGE  
BREAM BAY**  
76 Waiwarawara Dr, Ruakaka 0171

Karen Loft  
Business Manager  
Mob: 021 432 701

Office Hours 9.00 - 1.00  
email: storagebreambay@gmail.com  
www.storagebreambay.co.nz

## LOW COST DRIVEWAYS & SURFACING NEEDS

Concrete or asphalt beyond your budget ...

We have the next best solution for a  
fraction of the price.

Call for a quote, you'll be pleased you did!  
Paradise Quarry Contractors

Geoff (021) 972 139 or (09) 432 2722  
For contractors who 'think' ...

**Hydroseeding**  
Spray On  
Lush Lawns



For a free consultaion & quote, call or email  
George 021 688 949  
Info@gogreenteam.co.nz

**MPP  
MARSDEN  
PANEL & PAINT**

Panelbeating and Spraypainting  
Caravan and Motorhome Repairs  
Tyres New and Secondhand  
Punctures

470 Marsden Point Rd, Ruakaka  
Call 09 4330313 24 Hrs or Bert 021 983 724

## M.V.B. Electrical Ltd.

Working in Bream Bay since 1977

Repairs • Installations • Advice

Mike van Blommestein

Phone: 09 432 1015 • Mobile: 0274 783 749  
Email: mikevanb@xtra.co.nz

**BLINDS  
SHUTTERS  
& CURTAINS**  
Bream Bay Whangarei & Districts

Rollers, Venetians, Verticals  
Shutters, Curtains & Outdoor Blinds



Ask about our DISCOUNT for houseslots  
Free in-home measure & quote  
Free Installation

Phone Gail 0211 95 35 35

www.blindsandshutters.co.nz

**GRAEME BINT  
FENCING**

GOOD RATES, NO JOB TOO SMALL  
09 432-1599 or  
027-292-2833  
grbint@xtra.co.nz

## MANGAWHAI SMALL ENGINES

Grasshopper, Husqvarna and Honda dealer



194 Molesworth Drive, Mangawhai  
Ph: 09 431 5270 or Mb: 021 655 481  
Email: msengines@xtra.co.nz

## BREAM BAY HYDRAULICS

Bream Bay's first local  
hydraulic hose service



021 308 358 breambayengineering@gmail.com

**BREAM BAY NEWS PHONE 09 432 0209**

Email: breambaynews@xtra.co.nz

Post copy to : Bream Bay News, RD 2, Waipu  
Email: breambaynews@xtra.co.nz  
or leave it at the Waipu or Ruakaka Post and Lotto Shops

**FOR SALE****WATER TANKS**

09 431 2211

sales@absolute  
concrete.co.nz

**RAWLEIGH'S PRODUCTIONS** Independent dealer. Ointments back in stock. Phone Susan McRae 027 227 2291.

**WORMS FOR SALE**  
For worm farms  
Phone 432 0209  
or text 027 432 0070

Scooters Plywood  
3mtr Scaffold Planks \$77  
12mm H3.2 NS  
Plywood \$79.00  
Ph 438 6565

**WILTSHIRE SHEEP**  
Ideal lifestyle block sheep  
Self Shedding  
Ph 027 432 1016

**VEHICLE FOR SALE**

**VINTAGE CAR FOR SALE.** Austin A30 1954, hold rego "BABYEE" plate, no rust at all, straight body, 2nd owner. recommend view it at Ruakaka, asked \$10,000. email me rmarquet@xtra.co.nz.

**FOR HIRE****SHIPPING CONTAINERS**

20ft Shipping Containers, hire offsite \$180 per month + GST + Del, minimum 3 months,  
Ph 0212722739 / 021432701

**MARSDEN YACHT & BOAT CLUB CLUBHOUSE FOR HIRE**

Available to Community Groups for regular hire, weekdays and evenings

Fees only \$30.00 for half day sessions  
Also suitable for Corporate Hire, Conferences, etc. T's and C's apply  
Good facilities.

Enquiries to K. Walker, Ph. 4327422

**WANTED**

**OLD NEWSPAPER** Copies of the Bream Bay News, Advocate, Herald, Leader, Weekend Lifestyler, or Mangawhai Focus for recycling as erosion control. Waipu Lions fundraiser. Phone Dave Bell 09 432 0861.

**VEHICLES WANTED.** Top cash paid For any VANS, UTES, TRUCKS, 4X4, Dead or Alive, damaged, de-registered Mechanical problem, no WOF we buy it. Call 0800 333 398


LOCAL PEOPLE READ THE  
BREAM BAY NEWS  
IT IS AN EFFECTIVE  
PLACE TO ADVERTISE

**SERVICES OFFERED****NORTHLAND HEADSTONES**

Located in One Tree Point  
Your Local Headstone Showroom  
Call 0800 707 800  
www.northlandheadstones.co.nz



**Tree Removal**  
✓ Pruning  
✓ Chipping  
✓ Stump grinding  
Qualified & Insured  
Ph Scott (0800) 468-9663  
**Arborcare**  
Tree Maintenance



**GLENMOOR water care**  
WATER TANK CLEANING  
No need to empty your tank  
• Vacuum or full scrub  
Phone Mark Draper  
0274 707 607

**JD LAWN CARE SERVICES**  
PH. 021 063 7907

Lawn mowing, Weed spraying,  
Water blasting, surface cleaning of  
driveways, paths and patios, Hedge  
trimming, Section clearing, tree  
pruning, wood chipping and more.

**SOCIAL SERVICES**

**LINKING HANDS**  
Health Shuttle  
Phone (09) 431 8969

**BREAM BAY ANGLICAN FOODBANK**

If you would like assistance  
or know someone that does,  
perhaps we can help  
Please phone Janet 433 0045

**SOCIAL SERVICES****Safeman Safe family Men's Centre**

Safeman Safefamily offers a safe place for men to talk privately without judgement and with complete confidentiality. We are peer led and professionally supported and offer a range of services and support for men and their families.

The services we provide are as follows:

- Advocacy Navigator
- Court support
- FGC Support
- Probation Community Service Provider
- Legal Advice
- Marriage Celebrant
- House and property blessing
- One to one counselling
- Drug and Alcohol support
- Anger management group sessions
- Supervisor for court ordered access
- Work brokers/ help with employment opportunities.

No appointments are necessary, we have an open door policeu - if you need help or know someone that does just come on down to: **9 Takutai Place, Ruakākā.** We are right next door to Jimmy's Barber Shop or I can be reached by phone 021 121 0763 - Phil Paieka

**Bream Bay Community Support Trust**

Takutai Place, Ruakaka Phone: 09 432 7197

**Services we provide:**

- Registered Social Workers
- Family Support Workers
- Youth Workers
- Youth Hangout Space (watch this space...)
- Community Connectors (Connecting community to various services)
- Free Whanau Ora Medical Clinic with Ki A Ora Ngatiwai. Wednesday mornings 10am-12noon, by appointment only phone 09 435 4586
- Free Budgeting Service – Tuesdays 10am-12pm by appointment
- Mana Wahine Ki Wahine Toa, women's group
- Ha Tane – men's group
- Listening Ear – need to talk? Mon-Fri 9am-4pm no appointments necessary, cuppa and a listening ear available

**Waitata Sessions** 12:30pm every Wednesday, in our hall, come along for a sing along. Last Session for 2023 Wednesday 20th December

**Community Connections** 10:30am-12pm every Friday in our hall. Hot soup and cuppa available. The purpose of these sessions is for the community to get together and partake in different activities together, getting to know one another, sharing talents/hobbies/passions creating connections in the community, building friendships. The session topics are driven by interests of participants.

- Friday 1st March – Waitata Session
- Friday 8th March – Sea Week Activity with Bream Bay Coastal Care Trust
- Friday 15th March – Learner Ukulele
- Hot Cross bun workshop

Follow us on social media - Facebook and Instagram for updates on what is happening here during the week.

www.bbtrust.org.nz

**Not sure? Ask us!**

We provide free, confidential and independent information and advice to help you understand your rights and responsibilities.

Contact us for assistance.  
09 438 8046 • whangarei@cab.org.nz

www.cab.org.nz



## SITUATIONS VACANT

**SUPER STAR WANTED** to take care of - maintain ongoing classic vehicle collection. Good mechanical old school knowledge and common sense required. Flexible working hours. Full or part time. Please contact Dave 021 947 710.

## MARKETS



**OTP ARTISAN MARKET**  
9am - 1pm Sunday 17 March  
Fundraiser for Whangarei Hospital Children's Ward  
Third Sunday every month  
Spaces Available Phone 021 530 153



**Waipu Boutique Market**  
Handmade & Homegrown  
ARTS | CRAFTS | FOOD  
Sunday 10 March  
9:00am - 1:00pm  
Waipu Coronation Hall  
Claire | 021 272 2294  
Kate | 021 064 5698  
www.waipumarket.co.nz



### Justices of the Peace

**Ruakākā**  
Paea Paki 09 432 8262/021 149 1625  
Darrell Trigg 09 432 7256/021 332 901  
Ken Orr 09 432 8215  
Wayne Buckland 022 644 5376.

**One Tree Point**  
Jules Flight 0274 777 210  
Sir John Goulter 021 612 442  
MM Jolley 027 415 9486  
Ian Bogue 0274 300 418  
Grant Brown 027 248 7126

**Waipu**  
Trevor Vaile 021335 075  
Doug Scott 027 229 9752  
Ken Couper 027 292 0524  
Angela Stolwerk 021 823 966  
Chris Martin 027 367 2947

Make contact with a Justice of the Peace (on any day) and make an appointment to have your documents completed.  
A service desk also operates 10am to 11am on Saturdays in the Ruakākā Library.

### THE NEXT PUBLICATION DATE

of the Bream Bay News will be Thursday 21 March  
The deadline for all copy is 4pm on  
Wednesday 13 March

## PUBLIC NOTICES

### BREAM BAY ANGLICAN MISSION DISTRICT

AGM  
SUNDAY 17 MARCH,  
Following  
9.30 service.  
ST PAUL'S CHURCH,  
25 Karawai Street,  
Ruakākā  
ALL WELCOME



### Bream Bay Medical Centre Ltd.

#### Ruakākā Town Centre, Ruakākā

Monday - Friday: 8.45 am - 5pm

Saturdays: 9am - 12pm

#### Marsden Cove Medical Centre 1A Ngawaka Lane, One Tree Point

Monday - Friday: 8.45am - 5pm

Please advise at time of booking  
if you require an extended consultation

**Ph: 432 8060**

New patients welcome



### BREAM BAY ANGLICAN MISSION DISTRICT

#### EASTER SERVICES



- Palm Sunday, 24 March  
9:30 am St Peter's Church, Waipu
- Maundy Thursday, 28 March  
7:00pm St Paul's Church, Ruakākā
- Good Friday, 29 March  
10:00am Ecumenical walk beginning at St Peter's Church, Waipu 2:00pm Good Friday Liturgy, St Paul's Church, Ruakākā
- Easter Eve, 30 March  
7:00pm Lighting of new fire, baptism and first Easter Eucharist, St Paul's Church, Ruakākā
- Easter Day, 31 March  
9:30am Easter Eucharist, St Peter's Church, Waipu

### BREAM BAY SUNDAY CHURCH SERVICES

**Presbyterian** Camellia Ave, Ruakākā:  
8.45am. The Centre, Waipu: 10.15am.  
Prayer Service: 7pm

**Encounter** 223 Marsden Pt. Rd,  
Ruakākā, 10am.

**Anglican** - All services at ST PAUL'S Church, 25 Karawai St, Ruakākā 9.30am until further notice.

**Catholic** Holy Family Church,  
Ruakākā, 10.30am. Mass or Liturgy of the Word

**Lifepoint.** 300 OTP Rd, 10.30am.

### NORTHPIKE COMMUNITY LIAISON COMMITTEE

This committee meets periodically to review the environmental performance of the Northpine timber manufacturing plant in Waipu, in consultation with representatives of the local councils. Any Waipu resident with concerns about the environmental effects of the Northpine plant should notify the Northpine office (432 1155). Concerns will be recorded, considered and subsequently reviewed by the liaison committee. The Independent chairperson of the liaison committee is Steve Goldthorpe 0274 849 764.



### HOME SECURITY PRESENTATION

From United Security Services  
Presenter – Doug Shearer

Come and hear the options  
on all home security  
Alarms, CCTV, Monitoring etc.  
all questions answered

Open Meeting – All Welcome  
Tuesday 12th March @ 1pm 2024  
Bream Bay Community Trust,  
Takutai Place, Ruakākā.  
Hosts - SeniorNet Bream Bay  
Tea & Coffee provided

## CLASSIFIED ADVERTISING

Costs \$5.50 for up to 20 words and 20c for each additional word.

Boxed, classified adverts cost \$16.50 gst inc.

Phone your advert through to 432-0209

email it to breambaynews@xtra.co.nz

Post to: Bream Bay News, RD 2 Waipu 0582

or leave it with payment at The Waipu Post Shop or the Ruakākā Gift and Lotto Shop

**YOUR TRUST OUR PEOPLE** **Harcourts Waipu**

**Country Chamer** WAI2635  
\$940,000

- Character filled 4-bedroom, 2-bathroom home
- Expansive 4000m2 section with an orchard
- Polished floors and high ceilings
- Spacious open dining/lounge and a sunroom
- 2 heat-pumps for the winter
- 2 cabins great for family and friends
- Double garage for storage

**OPEN HOME: Sun 10 th March 11.00 – 11.30 am**  
437 South Road, Waipu  
Judy Guy 027 221 5623

**Stylish Lifestyle on the Edge of Town** WAI2578  
\$1,250,000

- Attractive 3-bedrm, 2-bathrm brick home
- Well-established, expansive 2430m2 site
- Bonus separate double garage/workshop and guest quarters
- Fantastic indoor/outdoor flow to covered areas
- Fujitsu home heating system & 20 solar panels
- Rural feel but close enough to walk to village

**OPEN HOME: Sun 10 th March 11.00 – 11.45 am**  
54 The Braigh, Waipu  
Roger King 0277 555 001

**Stunner on Riverview** WAI2633  
Price on Application

- Immaculate 3-bedrm/2-bathrm coastal home
- Panoramic views of the river, ocean and islands
- Beautifully tiled bathrooms plus scullery
- Floor to ceiling stacker doors flow to a partially covered entertainment area
- American oak flooring, tongue & groove ceilings
- Short stroll to rivers' edge & cycle-way to Waipu

**OPEN HOME: Sun 10 th March 12.00 – 12.45 pm**  
13 Riverview Place, Waipu  
Roger King 0277 555 001

Harcourts Waipu | 7 The Centre, Waipu | 09 432 4000  
Waipu Real Estate Ltd (limited agent) REAA2008

**Frazerhurst®** 40 years in Whangārei  
Curtains | Blinds | Awnings | Screens



Come and talk to us about your window furnishing requirements

- Free measure and quotes
- Free loan sample service
- Whangārei Showroom
- Satisfaction guaranteed

**Weathermaster**  
Blinds | Awnings | Shutters | Umbrellas

146 Lower Dent St.  
Whangārei  
Ph: 09 438 3986  
www.frazerhurst.co.nz

**BBR BREAM BAY REALTY**

**BREAM BAY REALTY LIMITED (LICENSED: REAA 2008)**

Shop 11 | Town Centre | Ruakaka 0116 | NZ  
PH: 09 433-0300 | [bbrealty.co.nz](http://bbrealty.co.nz)  
[info@bbrealty.co.nz](mailto:info@bbrealty.co.nz)

Proud sponsors **SPCA WHANGAREI**

**New Listing!**

**PRIVACY AND PANACHE**  
Inviting and roomy 3 bedroom, 2 bathroom home. Open plan living, outdoor covered deck for evening BBQ's. Gardens are well established, with pops of colour surrounding the concrete patios. River Esplanade just metres away, a great place to walk the dog, kayak or swim in the tidal river.  
Price \$875,000 | [#4180](http://bbrealty.co.nz)  
**JANINE GOLDSMITH AREINZ**  
Mob: 021 432 793

**ON PAR WITH EXCELLENCE**  
• Built locally by Cogan Custom Homes  
• 225m2, 4 bedrooms, 2 bathrooms  
• Open plan kitchen/dining with scullery  
• 768m2 section overlooking golf course  
• Extra large garage and workshop  
By Negotiation | [#4142](http://bbrealty.co.nz)  
**FIONA SOUTHERN MNZM**  
Mob: 021 317 775

**A GREAT DEAL —GIVE ME A CALL**  
• Section in The Landing awaiting your new build!  
• North facing, opposite the park and partially fenced.  
Price by Neg | [#4159](http://bbrealty.co.nz)  
**JOANNE DEWSON AREINZ**  
Mob: 021 780 622

**WELCOME HOME**  
Understated, contemporary and built to stand the test of time, this two year old home is spacious from start to finish. Open plan kitchen, dining, & living, with stacker doors opening to the covered portico. Separate lounge or media room, four large bedrooms & two bathrooms. Offers > \$1,025,000 | [#4172](http://bbrealty.co.nz)  
**JANINE GOLDSMITH AREINZ**  
Mob: 021 432 793

**EXCEPTIONAL HOME IN OTP**  
Perfect for families, retirees or holiday home buyers. Boasting 3 generous bedrooms, 2 well-appointed bathrooms, and a double garage, it offers ample space for comfortable living. A former show home, this property has been finished to a high standard and features many extras.  
By Negotiation | [#4156](http://bbrealty.co.nz)  
**FIONA SOUTHERN MNZM**  
Mob: 021 317 775

**4HA BLOCK NEAR THE SEA**  
A rare find in a sought-after location. Sandy, black peat soil and currently maintained by way of maize planting and stock grazing, this land is a flat rectangular shape. Wide road frontage and exposure on One Tree Point Road lends itself to lifestyle possibilities. [#4163](http://bbrealty.co.nz)  
Price \$699,000 + GST (if any)  
**FRANCIE STOKES**  
Mob: 022 656 0165