

Bream Bay News

Established 1967. Delivered FREE twice monthly

Affordable Quality

- * SECURITY DOORS
 - * INSECT SCREENS
 - * SHOWER DOORS
 - * BLINDS
 - * AWNINGS
 - * WARDROBE SYSTEMS
- Regular Bream Bay Service



PH: 438 9452
34 Albert St Whangarei
Div. Shadelite Industry

Phone 432 0209. email breambaynews@xtra.co.nz
Mobile 027432 0070 Postal address - RD 2, Waipu 0582
Website: www.breambaynews.co.nz LOCALLY OWNED AND OPERATED

8 August 2019

Ruakākā villagers unite to combat a “creeping darkness.”

Ruakākā Village people are joining together to fight what they term as “a creeping darkness” taking a hold in their community.

The problems they see are drug and alcohol abuse, domestic violence, a feeling of hopelessness and lack of direction amongst generations.

Long standing residents of the village have banded together, with members of the local churches and the extended community have now held two meetings with the aim of trying to create some light around these issues. They have also started a face book page entitled Te taapiri i to maatau kainga - Weaving our home back together.

A member of this group said at a meeting held in the Ruakaka Recreation Centre on Sunday afternoon 28 July, “We have lots of huge issues in our community. Depression, alcohol, drugs, gambling ... unemployment, homelessness being but some. We as adults have a choice ...sometimes our children don't. We have lost people we love because of some of these issues.”

She said, “We want to give our youth and our community, something to hope for, something to strive towards, a sense of purpose and belonging.”

Margo Henry said she was also concerned about local elderly people and that many were lonely and needed help with the maintenance of their homes. She plans to form a team of local people who could look out for the village elderly.

Youth worker Matt Deverill said some village ranga-
Continued on page 5.

Celebration time for Takahiwai Rugby League Club



It was celebration time for the Takahiwai Rugby League Club on Saturday afternoon, 3 August, when the club's premier team the Takahiwai Warriors won the Northland Premiership title in a close fought match against Otangarei at Toll Stadium. With just a few minutes to go the score stood at 20/20 until Takahiwai was awarded a penalty which Levita Levita turned into two more points for his team.

This was a turnaround from last year's final which Otangarei won 24 - 26 after scoring a last minute try against Takahiwai.

More photos from the league championship final on page 13



Waipu 33 St Marys Road

2 1 1

Asking Price \$579,000

View 1-1.45pm Sun 11 Aug or by appointment

Christine Birss 027 235 4323 christine.birss@bayleys.co.nz

MACKYS REAL ESTATE LTD, BAYLEYS, LICENSED UNDER THE REA ACT 2008

Nest, rest or invest

Light-filled and sunny, this 2003 built home will appeal to many. Open plan living, with sliding doors off the lounge, opens up to the outdoors. With plenty of room for a dining table, the kitchen is spacious and offers ample pantry style storage. The living area has a northerly aspect and with the bonus of a heat pump, quickly warms up the house on a winter's night. Handy wet-style, all in one bathroom offering ease of access. The single internal access garage is very convenient.

Deceased Estate - must be sold

bayleys.co.nz/1151570



This Issue

- Page 4 & 6 ...Letters.
- Page 7... Why did Bream Bay Ward Councilors vote against the WDC's Climate Change Emergency declaration?
- Page 7.. Bream Bay Bus Link timetable.
- Page 8.. Work begins on stage two of the Waipu to Waipu Cove cycle and walkway.
- Page 9 ...Waipu Seniors enjoy a mid-winter dinner.
- page 10..Bi law ammendment seeks to limit vehicles to south eastern end of Langs Beach.
- Page 11...Meet Julie Turner - Waipu Primary School's new Principal.
- Page 12 .. Tides
- Page 12...Three wins for Waipu Cove Surf Life-saving Club an regional awards.
- Page 14 .. What's On
- Page 15...Ships expected at Marsden Point
- Pages 15, 16 & 17... Trades and Services
- Pages 18 & 19 ..Classified advertising.

EDITORIAL

This isn't just a pakeha society

I congratulate the people in the Ruakaka Village in coming together to try to sort out some of the village's problems. Two meetings have been held so far and a few ideas, such as holding a community sports day and a jobs expo are being put into practice.

Although the poorest neighbourhood in the whole of Bream Bay in terms of money and material goods, the village does have great wealth in its people. Whenever I drive down Tamingi St. or Moki Place, I am struck by how alive the village is with children playing and groups of young people meeting on street corners. Some of the best and wisest people I have been privileged to meet live in The Villi.

Matt Deverell, a young social worker who I believe is doing some great work with local young people, told the meeting on Sunday that he had asked some of the village young ones to say what they needed and what their biggest challenges are.

A youth space was something many wished for and this seems a good idea and one I hope that can be arranged.

Challenges listed were problems at home, drugs and alcohol and growing up Maori in a Pakeha society.

I want to take issue with this last item. Everywhere I go I see successful Maori people with positions of responsibility. There are Maori teachers, school principals and deputy principals, Maori police officers, Maori judges and lawyers at the Whangarei District Court, Maori business owners, Maori members of Parliament.

We do not live in a Pakeha society. We just live in a society.

My own idealistic view is that everyone should play their part in making society function for the good of all its members. Whatever you are doing,

if you do it well, you are helping our society succeed. In my view someone picking up rubbish from the side of the road or cleaning out a public building is doing a greater service than a school principal, a politician or a district court judge who has grown jaded and is doing his or her job in a half hearted way.

We should take the best aspects of Maori and European culture and whatever we can learn from functioning societies around the world to build a community where everyone can flourish.

It is unhelpful and not logical for young people to hold the view that they are somehow outside of society. A more constructive stance would be to say to them, "Sure society is by no means perfect. It has its problems. Racism is a problem. But look at all the hard work people are doing to try to make things better. Look at the efforts people are putting in. There are many great people: Maori, Pakeha and of many other ethnicities all working hard for your benefit. We have a road network and an electricity supply. There are farmers growing food. There are shops making food, clothing hardware etc available for us to purchase. How do you think all those goods arrive on the supermarket shelves?

If you get sick there is an ambulance service and a hospital. If you are robbed or assaulted we have Police and the courts to protect you and administer justice. If you fall on hard times the taxpayers of New Zealand will provide you with an income.

Primary and secondary schools offer free education. If you drop out of school and then decide you want to learn a trade or a profession and are prepared to put in the effort, people will bend over backwards to help you get there.

"What part do you want to play in our society? What ideas can you come up with and what can you do to help improve on what we have?"

Marilyn

THE BREAM BAY NEWS

is published by Bream Bay News Ltd.
 Address : RD 2, Waipu
 Phone : (09) 432 0209
 Mobile : 027 432 0070
 Editor : Marilyn Cox
 Accounts : Susan McRae
 Advertising design :and website maintenance
 Megan Lea
 Printed by Horton Media

**Local people read
 THE BREAM BAY
 NEWS
 It is an effective
 place to
 advertise**

THE NEXT PUBLICATION DATE

of the Bream Bay News will be Thursday 22 August
 The deadline for all copy is 4pm on
 Wednesday 14 August

Proudly serving Northland for over 35 Years

USn WARNING 4301992 UNITED SECURITY NORTHLAND

HIKVISION CERTIFIED PARTNER

www.unitedsecurity.co.nz

Paradox Detectors

THINKING ABOUT SECURITY ?

FOR PROFESSIONAL & CONFIDENTIAL SERVICE
 LOCALLY OWNED & OPERATED
 CALL THE TEAM FOR YOUR FREE SECURITY CONSULTATION

USn WARNING 4301992 UNITED SECURITY NORTHLAND

Alarm Installation Servicing
 IP Camera Systems
09-4302303

Monitoring Telephone Answering
 24/7
09-4301992
 www.unitedsecurity.co.nz



**TITLES NOW AVAILABLE
 WAIPU GREEN ESTATE**

- Superior quality, fully serviced
- Section sizes 500-729sqm all level
- Start planning to build your dream home today
- Choice of 16 sections with Freehold Titles
- Boutique subdivision, ONLY 35 sections
- Prices start \$280k



Open Days Sat & Sun
 10 AM - 12 PM
 on site sales office
 (30 Argyle Street, Waipu)

Phone owners: Janine & Adam Jones
 0800 2 GRASS (0800 247 277)
 www.waipugreenestate.co.nz

Ken Couper standing for Bream Bay seat on WDC



Ken Couper

Ken Couper, the Chairman of the Waipu Museum board, has announced he will be standing for a seat in the Bream Bay Ward of the Whangarei District Council.

Ken said he was asked to stand and after thinking about the idea, decided that he had the time and, if he was going to stand for the Council, this would be the moment.

Councillor Phil Halse, who has held a Bream Bay Ward seat for 27 years, has said he would be standing for the Okara award in the upcoming election as he now lives in Whangarei, leaving his spot wide open for a new candidate to win.

Mr. Couper is a dairy farmer and a fourth generation resident of Waipu. He said he would

like to see the whole of Bream Bay advance.

“Historically Waipu has worked well and we should try to share these advantages with our neighbours. I very much want to represent the whole region.”

Mr. Couper has served as a member of the Waipu Primary School Board of Trustees and is a member of the Otamatea Vet Club Committee.

After attending a candidate information evening at the Ruakaka Recreation Centre last month, actor and Family Court lawyer Blair Strang, who previously announced his intention to stand, has decided not to contest the Bream Bay Ward election in October.

Mr. Strang said he realized that he would be unable to contribute and participate in the number of meetings required of a good Whangarei District councillor.

Sitting Councillor Shelley Deeming has said she will be standing for another term.

Nominations close 16 August

Nominations for the Whangarei District Council and Northland Regional Council elections close at noon on 16 August. Candidates are encouraged to get their nominations in before this time to avoid a last minute rush.

Electoral Officer Dale Ofsoske said, “People are quite within their rights to file nominations at any point during that nomination period, but we do encourage people to get them in early as it helps ensure any potential problems with the nomination forms can be resolved in plenty of time.”

Anyone aged 18 and over can stand for election provided they hold New Zealand citizenship and are on the Parliamentary electoral roll.

Councillors receive a base salary of \$49,995 with this rising to \$62,493 for Committee chairpersons and the deputy mayor and \$144,526 for the Mayor. They also receive allowances for expenses such as mileage.

The Whangarei District Council voted at its July meeting that in order to increase the diversity of councillors, in the coming term eligible elected members would be entitled to receive a childcare allowance while attending council business with this capped at \$6,000 per child.

Voting forms will be posted out to electors from Friday 20 September.

There are two seats available on the Bream Bay Ward of the Whangarei District

Continued on page 5.

New Bream Bay bus service well supported on its first run



Seven passengers were waiting at the Peter Snell Rd. bus stop.

The new Thursday Bream Bay Link bus service got off to a good start last week with 25 people climbing on board the Leabourns 30 seater for a ride to Whangarei.

For this first trip the ride was free and a celebratory morning tea was waiting for the passengers at the Whangarei Rose Street bus terminus.

Councillor Rick Stolwerk who caught up with the bus at the Peter Snell stop said the atmosphere on board felt like a “party bus.”

The free ride came as a nice surprise for a Te Araroa walker with a big backpack who needed to get to Whangarei to replenish his food supply before beginning the trek up to Cape Reinga.

Not that the fares are all that expensive anyway. The new service is subsidized by NZTA and the Northland Regional Council. A return trip to Whangarei from Langs Beach costs \$10, from Waipu - \$8 and from Ruakaka - \$7.

The new service is a trial and its continuation will depend on how many people continue to use it.

The Regional Council Transport Strategic Planning Officer Sharlene Selkirk said last Thursday, after the first return trip, “I’m absolutely stoked with the community support shown today. We had 25 passengers! We’re encouraging feedback and ideas for improvement and hope the service continues to be of value and is supported. Thanks to everyone who worked with us to make this happen.”

The timetable for the Bream Bay Link service is on page 7 of this issue.

Phone the BREAM BAY NEWS - 09 432 0209

or email: breambaynews@xtra.co.nz

if you know of something interesting going on in Bream Bay.

OPEN HOME



One Tree Point 17 Bermuda Place

5 1 3 3

Asking Price \$749,000

View Sun 1-1.45pm

Melva Hartnell 027 499 8463

melva.hartnell@bayleys.co.nz

MACKYS REAL ESTATE LTD, BAYLEYS, LICENSED UNDER THE REA ACT 2008

So many options - so much potential!

Looking for somewhere with room for mum and dad, a teenager, extended family, shared holiday home, investment or maybe work from home - look no further. Three bedrooms plus ensuite and walk-in robe in the main house and two bedrooms, bathroom, laundry and kitchenette in the sleepout, how great is that! Fabulous flow to three private decks, patios and outdoor relaxing spaces from the living areas - barbeques and summer all year round. Located in one of the best cul-de-sacs in One Tree Point and an easy walk to the white sandy harbourside beach for that daily swim or just a lazy time spent on the beach.

Spoilt for choice!

bayleys.co.nz/1060049

BAYLEYS

RUAKAKA SAFE STORAGE

99 MARSDEN PT ROAD, RUAKAKA
 92 Units from 6 x 3 to 1 x 1
 Each unit individually alarmed and monitored
 Electrified security fence
Ph. 0508 273 262 or 0275 310 788
 CLEAN - DRY - SECURE

BREAM BAY STORAGE

INSIDE/OUTSIDE storage at 50 Cove Rd., Waipu

Free phone. 0800 432 135
enquiry@breambaystorage.co.nz
www.breambaystorage.co.nz

BIG RED TRUCKING

Call 021 070 8211

Owner /Operator Duncan Mackay

 **GENERAL CARTAGE SERVICE**
 Metal / Topsoil / Sand / Manure / Hay / Silage

.....

 **WATER**
 Prompt Delivery And Reliable Service.
 Healthboard Approved Drinking Water Carrier.

Why is the Museum Board intent on changing the focus of the House of Memories?

Why is Ken Couper - and I must assume the rest of the Waipu Museum Trust Board so intent on changing the focus of the Museum - our 'House of Memories' built by our forebears expressly to contain the memories of the migration from Nova Scotia?

I realise how lucky a small town like Waipu is to have a 'third migration', as Mr Couper mentions in his message to the Art'n Tartan function, but I am sure that people do not feel left out because the museum does not include the memories of their ancestors. In fact I believe that many have joined the volunteers because of their interest in the Nova Scotian history and their wish to help not only with Art'nTartan but in the museum itself.

In reply

Thank you for the opportunity to respond to your correspondent Helen Webber from Auckland. It is precisely because the story of the double migration is so important to the identity of Waipu, and the descendants of the original settlers, that the Museum Board wishes to keep the Museum relevant to as many people as possible. The double migration will always be at the heart of the Museum, and also Waipu's point of difference. However we can not deny that there was a significant history prior to the arrival of the Nova Scotians, and we believe It is our duty to our community to tell this story, with pride, in our Museum. I believe that the vast majority of descendants and their ancestors would willingly share their story, secure in their identity and sure in the knowledge that a community celebrating its history together, in a true and complementary fashion, is the stronger for it.

The House of Memories was built as a centre piece to the centennial celebrations in 1953 to house memories of the migration. After failing to raise the required amount of money within the circles of the descendants a call went out to the wider community for financial assistance. This was answered with many non descendants donating money, my grandparents amongst them, because they realised the importance to Waipu of having and maintaining a strong identity. Again in

If we change the focus of the museum to include everyone who came before and everyone who came after the Nova Scotian migration we will end up with just another little regional museum instead of the outstanding UNESCO listed museum which reflects the proud history of our people.

It is also very important to remember that this museum represents not only the present population of Waipu but all the descendants of those who came on those small ships and are now spread the length and breadth of New Zealand.

*Helen Webber
 Auckland*

2003 as the sesquicentenary was planned a committee chaired by Rod Mckay comprising half descendants and half non descendants, my father amongst them, planned the celebrations and raised money for the extensions that doubled the size of the museum. A record of all those who contributed to that project is held at the Museum. Many non descendants donated their time and money, with funds also coming from the ASB Trust and Lotto New Zealand.

The Museum today holds its position in our community because in the intervening years since 1953 the whole community, both descendants and non descendants, have continued to invest significant time and money with the knowledge and understanding that a strong sense of who we are and from whence we came is so important. I implore Helen Webber from Auckland, and any other descendants who may share her views, to look to your history to find comfort as we move forward. Your ancestors showed great foresight and courage as they faced and overcame the challenges of a changing and new world. By working together with tolerance and understanding they created a legacy for a whole community to celebrate.

*Ken Couper
 Chair Waipu Museum*

More letters on page 6.

LETTERS TO THE EDITOR ARE VERY WELCOME

Email them to: breambaynews@xtra.co.nz, Drop them off at the Waipu or Ruakaka Lotto shops

Or post them to: The Bream Bay News, 547 Mountfield Rd., RD2 Waipu, Postcode 0582

We'll have what you need to know !



Eastwood 210 sqm

\$385,000 incl gst

Includes: plans, consent, kitchen, appliances, tinted double glazed windows, tiles, carpet, blinds.



Wayne Pickerill
 Managing Director

"Hi, I'm Wayne Pickerill, Managing Director and Project Manager for your new Fowler Home. Enjoy quality and all the benefits of dealing with an efficient, low overhead, nationwide company, where I will take a personal interest and be involved through to completion."



FOWLER HOMES™

More designs at www.fowlerhomes.co.nz or visit our office at 63 Walton St, Whangarei. Phone Wayne Pickerill 438 4840

Ruakākā villagers unite to combat a “creeping darkness.”

Continued from page 1.

tahi (young people) are not at school because they have been expelled from Bream Bay College and the cost of sending children to schools in Whangarei at \$500 per term for the bus is too much for their families.

“It’s a massive issue keeping them busy. They get so used to doing nothing. I have found you need to walk beside them, not just tell them they have to be somewhere or do something. If they are not engaging with kura the more things they can get involved in the better. But many of them are shy and it is hard for them to go along to something they have not been to before.”

A Young school leaver said she was particularly concerned about young girls who had left school who were “doing things young girls should not be involved in.” She said had attended a careers day in the Bay of Islands run by QRC (Queensland Resort College), which was “quite cool.”

“They ask you what kind of job you would like in the hospitality industry. If you didn’t have the NCEA credits you need they showed you how to get those credits.”

A suggestion was made that a career expo be held in the Recreation Centre; perhaps with local businesses participating and explaining what skills they are looking for in future employees. A comment was made that, as well as helping to give young people ideas about possible future careers, some adults might benefit as well.

Matt said he had done a survey of the young people he worked with asking what they struggled with and what they felt they needed. Some of the items listed were mental health support, transport to help them get to work, the need for a youth space,

He has a youth drop in session at the Bream Bay Trust on Thursdays after school and people at the meeting acknowledged the good work he was doing.

Some of the things young people said they struggled with were: being a Maori in a Pakeha system, addictions, peer pressure and unstable families.

Matt suggested one thing that could be done now to

bring the village people together could be to show some joint village solidarity with the Ihumātao protest in Mangere. He suggested a photograph, perhaps taken with a drone, of everyone standing together with some support signs, which could be sent to the protesters.

However, a respected local, who didn’t want to be named, said he wasn’t sure this would unite village people as many would not know what the protest is about.

Also “some of us believe that the decision of the elders of that tribe should be respected.”

Kaumatua and kuia of Te Kawerau a Maki reached an agreement with Fletchers Building that 8 hectares of the land at Ihumātao be returned to them and that 480 houses be built on 32 hectares alongside with 40 of those houses set aside as affordable homes for their people. The elders have asked the protestors to leave the site.

He said maybe a community centre was needed in the Ruakākā village.

The centre could be used for gatherings including tangi.

“Our mate lie in our houses and we hold up umbrellas in the rain.”

He suggested the building could also be a space for the rangatahi.

A proposal for a sports day, with whole families participating, received strong support. Long-term residents of the village remembered top town being a popular regular occurrence in the past. Each street had its own team with the Young Rebels team being made up of young people gathered from all over. With no funds to buy sports equipment people said they were sure they could find what was needed in their sheds. Parents would be encouraged to take part in the activities along with their children.

“We need to start somewhere”, said the meeting organisers.

Nominations close 16 August

Continued from page 3.

Council. Councillor Phil Halse who has held one of these for the past 27 years will contest the Okara Ward this election, which leaves his space on the ward wide open. Shelley Deeming, who holds the other Bream Bay Ward seat, is standing again.

Bream Bay is part of the Coastal Southern ward of the Northland Regional Council, which has one rep-

resentative on the Northland Regional Council. Rick Stolwerk who currently holds this seat is standing for election once again and as at last Friday there were no new contenders.

The base salary for a Northland Regional Councillor is \$56,537.

Curtains & Blinds with class

- Mobile “in-your-home” service
- Genuine pensioner & house lot discounts
- Hundreds of samples
- 25 years in interior design

**FREE CURTAIN MAKING (OVER \$30/m)
UP TO 60% OFF BLINDS**



FOR A FREE MEASURE & QUOTE
**PHONE LESLEY
09 432 7140**

**Bream Bay’s only curtain and blind supplier
WINDOW DECOR LTD
Servicing Bream Bay & Mangawhai**

BREAM BAY LANDSCAPES LTD

Landscape Construction and Wholesale Nursery

656 One Tree Point Rd
RD1, Ruakaka
Mobile 027 495 2441
www.landscaping.net.nz



Open
Tuesday - Saturday
8.30am - 4.30pm



The Turning Point



**New Kitchens
designed and
installed
to the client’s needs**

**Alterations, renovations,
kitchen upgrades,
furniture repairs, deck building and repairs**

**Specialising in quality • 30 years experience
Trade certified joiner**

Phone Steve King 09 432 1784 or 021 468 288

RayWhite

Another SOLD

38 Connell Road, Waipu

Just SOLD

Malcolm is delivering great results in your area.

For a free friendly appraisal call Malcolm on 021 783 533 or email us at breambay.nz@raywhite.com

Join our Bream Bay community page on <https://www.facebook.com/groups/breambaycommunity>.

Ray White are proud to offer a 10% discount on our service fee to SuperGold Card holders.



Malcolm Norton
021 783 533
malcolm.norton@raywhite.com

The Real Estate Shop Limited Licensed (REAA 2008)

rwbreambay.co.nz



**STORAGE
BREAM BAY**
Makahine Street, Ruakaka, OT18

- Fully Secure
- Carded Gate Entry
- Security Camera Surveillance
- Reasonable Rates

Website: www.storagebreambay.co.nz
E-mail: info@storagebreambay.co.nz
Phone: 021-432701 Fax: 09-4327029




ATLAS
QUARRIES
CONCRETE

Thinking concrete but don't know where to start?
Think Atlas Concrete

- We quarry the aggregate
- We manufacture the concrete
- We site visit to advise the best options
- We give you the choice of mix and colours
- We give a choice of local placers for you to choose
- We manufacture concrete to your requirements
- We stand by our product, you stand on it

Atlas Concrete
Your First Call for Concrete
Ph: 0800 888303 - Brynderwyn
or 432 5030 - Ruakaka



Camp Waipu Cove

New architecturally designed 2 bedroom cabins
(sleeps up to 6 guests) Available to book now
via www.campwaipucove.com
or 09 432 0410



THE NEXT PUBLICATION DATE

of the Bream Bay News will be Thursday 22 August
The deadline for all copy is 4pm on
Wednesday 14 August

LETTERS

Vow to appeal NRC decision on Genetically Modified Organisms

As one of 82 submitters to the NRC proposed new Regional Plan for Northland who urged the NRC to include precautionary and prohibitive GE/GMO provisions in this important over-arching document, I am appalled at the controversial actions of NRC Chairman Bill Shepherd, Councillors Rick Stolwerk, John Bain, and David Sinclair at the last NRC full council meeting on 16 July who ignored all the submissions from Bream Bay and the wider region.

My thanks to NRC Councillors Mike Finlayson, who was compelled to speak out regarding the current Chairman's failure to adhere to proper democratic process - failure to stand himself down from the vote on 16 July 2019 (due to his conflict of interest and advocacy for the sole submitter - Federated Farmers-who opposed even precautionary GE policies in the new Regional Plan) and (along with Councillors Stolwerk, Bain and Sinclair) -failure to act on the NRC's obligations to protect its constituents, our biosecurity, indigenous biodiversity and wider environment from the risks of outdoor use of GMOs.

It never should have come to this. Northlanders who made submissions on GMOs to the NRC PRP expected and deserved to be heard by independent commissioners (as we did during the NRC proposed new "Regional Policy Statement" process).

My farming colleagues and I smelled a rat when the highly unusual and dodgy NRC decision was made back in March 2018, to sideline the independent commissioners on the GE/GMO issue. Independent commissioners naturally heard all of the other issues raised by submitters and council during the proposed

Regional Plan process- just not GE.

Yep, the NRC didn't like it when they were forced to listen to the independent commissioners wise decision a few years ago to place strong precautionary GMO provisions and other wording in the RPS and current NRC Chairman Shepherd and his allies finally figured out a way to get around Northlanders.

But this type of obstruction by the NRC Chairman won't work in the long term. Myself and others will appeal the NRC's controversial decision and we will win. What a shame the NRC will waste so much Northland ratepayer money trying to prop up their deeply flawed decision and embroil the regions primary producers, District councils and Tai Tokerau mana whenua in a legal battle.

At any moment, a overseas multinational, NZ Crown Research Institute or company can apply to the EPA for an outdoor GE/GMO experiment, field trial or release in Northland. A big thank you Cirs Joce Yeoman, Justin Blaikie, Paul Dimery and Mike Finlayson for doing your best to protect our region, as the use of genetically modified organisms presents unacceptable risks to our existing valuable GE-free status, biosecurity, wider environment, and economy.

Rick Stolwerk - I voted for you in the last Local Body Elections (when you ran on a "green" ticket). Never again. You have consistently disappointed and ignored the wishes of local Bream Bay constituents / submitters on the Ge/GMOs issue.

*Zelka Grammer
Mangapai*

First past the post allows minority groups to take over

First Past the Post makes a mockery of democracy in local body election. It enables powerful lobby groups to take over local councils, as happened in the recent manipulated vote taken by the Northland Regional Council on precautionary regulations for Genetically Engineered (G.E.) /Genetically Modified Organisms (GMOs) on Tuesday July 16th, 2019.

Well done Councillor Mike Finlayson for having the integrity and courage to show how this vote was engineered by a Federated Farmers dominated council. The Northland Regional Council have a primary duty to care for the welfare of the people of Northland, not carry out the wishes of a powerful lobby group; in this case Federated Farmers of which Chairman Bill Shepherd is a member. This alone should have barred him from voting. Instead, he cast two votes and made sure another Councillor was deprived of her vote.

Now we have lost the protection of our precautionary and prohibitive regulations on G.E./ G.M.O.s and face the costs of a court case to get them reinstated.

Democracy has been duped and has failed. These things are needed to give it back to us:

- independent commissioners at the readings of all

submissions

- a written regulation that a casting vote must be for the status quo
- councillors not to vote when they have a personal interest in the issue being voted on
- a fairer method of voting for council members.

The present method of First Past the Post means minority groups can take over the council. It is why we have MMP for general elections. Preferential voting opens up opportunities for other contestants to succeed in elections, and prevents councillors becoming pawns of powerful lobby groups. It gives the voters more voice in what the council does, and keeps the council more in touch with its electorate.

Thank you Mike Finlayson for having the interests of the voters at heart and defending democracy.

Rick Stolwerk cast his vote with Bill Shepherd to prevent precautionary and prohibitive regulations being part of the Northern Regional Council Plan.

*Mary. McDonald
Mangapai*

In reply

Thank you for your letters on the GMO/GE decision. Councillors are elected by their constituents to listen and take note of their concerns, I take this role very seriously.

Upon being elected, Councillors take an oath to represent the whole of the Northland region in their elected term. Having read the information presented to this council and further scientific research on the GMO/GE discussion, I believe that I have made the correct

decision for the future of all 180,000 Northlanders and the Northland environment.

Once again thank you for your comments

*Rick Stolwerk
Northland Regional Councillor*

Why did our Bream Bay Councillors vote against the WDC's Climate Change Emergency declaration?

Whangarei District Council declared a Climate Change emergency last month with just two Councillors, Shelley Deeming and Phil Halse who both represent Bream Bay voting against the declaration.

The Bream Bay News invited Councillors Deeming and Halse to explain why they voted this way.

Councillor Shelley Deeming said she had four main reasons:

“• In my view Council was reacting to a pressure group without allowing time for the general community to express their opinions. The mantra of this council has been consultation above all else but I think it fell down on that in one of the most important issues it has faced.

“Declaring an ‘Emergency’ gives Government the right to apply the procedures available in an immediate crisis which are not necessarily appropriate in an emerging issue.

“Our children and vulnerable people are being used and stressed unnecessarily by the ranting coming from an activist sector convincing them that basically they are doomed. That is grossly unfair.

“Also I believe climate change issues should be funded on a national basis based on income and affordability rather than by the ratepayer based on the value of their home. Pensioners are already struggling to keep a roof over their heads having continued to live in areas that have increased in value dramatically over the years. Local government (aka the ratepayer) pays when it takes responsibility for a national issue.”

Councillor Halse said, “I will not vote for anything that has such an emotive word like *emergency* and therefore take on the connotations that this will have on our district ratepayers.

“I debated that this is a Central Government issue and there needs to be clear Government legislation that directs when an emergency is invoked. We already cover areas of concern in our consents process and these are constantly updated when we receive factual information.

Councillor Halse said, “Climate changes all the time and will continue to do so. Our resources would be better spent addressing human pollution.”

In a press release the Council’s senior strategic planner Bernadette Aperahama said, “Whangarei District Council’s declaration of a climate change emergency in the District reflects Council’s concerns about climate change, and recognises the speed and extent of the change in thinking and action needed to avoid the worst impacts of climate change.”

She said under the declaration Whangarei District Council “acknowledges that climate change represents one of the greatest threats to our community, our biodiversity, our economy and the life supporting capacity of our planet and “advocates that this emergency requires urgent action by all levels of government to prevent the most harmful impacts of ongoing climate change and that “Whangarei District Council has an important role to play and commits to developing and implementing an action plan to support the declaration.”

Waipu Lions working on new local telephone directory

The Lions Club of Waipu will be producing a new local telephone directory in December 2019. If your details are in the 2018/ 2019 regional White Pages directory, they will automatically be included in the new local directory.

If your phone number has changed in the last 12 months or if you are not included in the White Pages listing but wish to be in the local directory you need to contact the Lions.


The Directory covers: Langs Beach, Waipu, Ruakaka and One Tree Point.

You can phone 027 592 4914 or 027 206 8600. Email: directoryinfo@gmail.com or post your information to: Waipu Lions, PO Box 79, Waipu 0582.

Monies raised through the sale of advertising in the directory are donated to the community via the Waipu Lions.

BREAM BAY

link



Operates every Thursday from 1st August 2019

MORNING


9.00am	Departs	Kaiwaka Kaiwaka Hall
9.15am	Departs	Mangawhai Village Village Shops Bus Stop (by restrooms)
9.20am	Departs	Mangawhai Heads I-Site
9.35am	Departs	Langs Beach Corner of Wairahi and Cove Roads
9.40am	Departs	Waipu Cove Beach Car park
9.50am	Departs	Waipu Monument Bus stop
10.10am	Departs	Ruakākā Peter Snell Road (opposite Takutai Place)
10.50am	Arrives	Whangārei Rose Street Bus Terminus

*For travel within Whangārei see CityLink Whangārei timetable www.citylinkwhangarei.co.nz or get your timetable from the Rose Street office.

AFTERNOON

3.00pm	Departs	Whangārei Rose Street Bus Terminus
3.40pm	Departs	Ruakākā Peter Snell Road (opposite Takutai Place)
4.00pm	Departs	Waipu Monument Bus stop
4.10pm	Departs	Waipu Cove Beach Car park
4.15pm	Departs	Langs Beach Corner of Wairahi and Cove Roads
4.30pm	Departs	Mangawhai Heads I-Site
4.35pm	Departs	Mangawhai Village Village Shops Bus Stop (by restrooms)
4.50pm	Arrives	Kaiwaka Kaiwaka Hall

OPERATED BY



Ph: 0800 994 404
E: office@leabourn.co.nz

FARES		
	One Way	Return
Kaiwaka	\$7.00	\$10.00
Mangawhai	\$7.00	\$10.00
Mangawhai Heads	\$7.00	\$10.00
Langs Beach	\$7.00	\$10.00
Waipu Cove	\$6.00	\$8.00
Waipu	\$6.00	\$8.00
Ruakākā	\$5.00	\$7.00

ROUTE DESCRIPTION

Kaiwaka/Mangawhai Road, Molesworth Road, Mangawhai Heads Road, Cove Road, The Centre Waipu, Nova Scotia Drive, SH1, Marsden Point Road, Peter Snell Road, Marsden Point Road, SH15A, SH1, Otaika Road, Maunu Road, Walton Street, Rose Street Bus Terminal.

If you would like to be picked up elsewhere along the route, please phone Leabourn's to arrange this on the Wednesday before you want to travel.

CONTRACTED TO:
Northland REGIONAL COUNCIL
Te Kaitiaki a rohe o Te Tai Tokerau

For service updates visit:
www.buslink.co.nz
Feedback to buslink@nrc.govt.nz

Get a free upgrade on your hearing aids.



Experience better technology for less. Purchase selected hearing aids from Bay Audiology, and we'll upgrade you to the next level of technology for free.

Are you an AA Member? Get in touch to learn what benefits we have in clinic for you.

Bay Audiology Waipu | Waipu Medical Centre, 7 Nova Scotia Drive

The special upgrade offer is available on selected ReSound manufactured devices only and hearing aids must be purchased between 1 July 2019 and 1 November 2019. Clients who receive ACC funding for fully funded hearing aids must contribute a top-up amount to be eligible for this upgrade offer (see in clinic for details). Insurance, Veterans' Affairs, and Ministry of Health fully funded clients are not able to receive the upgrade offer. Full terms and conditions for special upgrade offer are on bayaudiology.co.nz or in clinic. For details on AA Member Benefits at Bay Audiology visit bayaudiology.co.nz or aa.co.nz/benefits.

BOOK NOW on 09 430 0649



Work begins on Stage 2 of the Waipu to Waipu Cove cycle and walkway

Work is underway on Stage 2 of the Waipu to Waipu Cove Cycle and Walkway. The section of the trail between Waipu Cove and Cullen Rd was sprayed out by Ben McLennan of McLennan Agrispray several weeks ago and the various underground services on the route have been identified and marked out.

Paul Jenkins of Jenkins Contracting, said all going well with jobs he is currently working on, he expects to be able to get to work on the site in around three and a half weeks time.

The route crosses to the western side of Waipu Cove Rd. where it was judged visibility was good continuing as far as Cullen on this side, as the Waipu Cycle and Walkway Group was unable to secure an easement on one property for a roadside route on the preferred eastern side.

Mangawhai to OTP cycleway application declined but all is not lost

An application by the Whangarei District Council's to the Provincial Growth Fund for funds to build a Mangawhai to One Tree Point shared pathway for cyclists and pedestrians has been declined.

Whangarei District Council roading engineer Nick Marshall told the Bream Bay News, "We recently had a letter advising that the PDU (provincial development unit) was not currently interested in funding this proposal."

But all is not lost says the Northland Transport Alliance's Strategy and Planning Manager Jeffery Devine of the Whangarei District Council.

He said the Council has included a similar project, a Langs Beach to Ruakaka Shared path, in the NZTA developed Twin Coast Discovery Highway programme that has already received approximately \$6M from the PGF fund to investigate a number of projects including; An *Integrated Northland Cycling plan*

Mr. Devine said, "The first stage of the programme, the investigations, are still underway and we are hopeful that these will continue on to successful PGF applications for the next stage, the implementation of these projects.

"So although Council's shared path application was declined, we are still hopeful that the project may achieve funding as part of the Integrated Northland Cycling Plan."



Police Report

Lucky escape after car rolls on Brynderwyn Hill

On 29 July at 2.42am a northbound vehicle travelling up the southern side of the Brynderwyn Hill hit the curb and rolled. The car ended up on its four wheels on the side of the road and the driver, a 60-year-old man from Auckland, was able to continue driving up to the summit where he phoned for help.

There have been two minor vehicle crashes in Ruakaka over the past fortnight. The first occurred on One Tree Point Rd at 11.15am on 4 August. When a right turning vehicle was hit by another, which was attempting to overtake it.

On 2 August a distracted driver drove into the rear of another vehicle, which had stopped to make a right turn into Waitaha Place.

On 3 August a vehicle drove off the road and into a drainage ditch along Waipu Cove Rd.

Trucks found with insecure loads

The Police Commercial Vehicle Inspection team has continued to be active in Bream Bay over the past two weeks. They have found several trucks with insecure loads and several others to have exceeded the mileage on their road user charges payments

Vehicles of disqualified drivers impounded

A 37-year-old Ruakaka man was stopped by Police on SH1 on the Brynderwyn Hill and was found to be driving while suspended. His car has been impounded for 28 days after which time he will be facing towage and storage fees. He will also be appearing in the Whangarei District Court.

A 24-year-old local man was stopped by Police on 4 August on SH1 at Uretiti. He was found to be driving while disqualified. His car has also been impounded and he will also be making a court appearance.

Vehicle stolen while on night shift

A vehicle was reported stolen from Ralph Trimmer Drive some time while the owner was at work between 10pm at night and 7am in the morning over 3 and 4 August.

Petrol drive off

A vehicle was driven away from the Caltex petrol station in Kaiwaka at 10.20am on 3 August after it had been filled with \$60 worth of unpaid for petrol.

Police called to verbal arguments between couples

Over the past fortnight Bream Bay Police attended two family harm incidents. One was a verbal argument by a couple in Maungaturoto on 30 July and the second, at 8.30pm on 3 August in Ruakaka, a verbal argument between a couple who had been drinking.

Court appearance deferred until 6 September for objectionable material charges

Paul Ronald Leslie Burton, formerly of Waipu, who is facing multiple charges of possession of objectionable publications and two counts of making objectionable publications will next appear in the Whangarei District Court for a case review on 6 September at 10am. An earlier appearance date set down for 2 August was deferred to this date.

The charges Mr. Burton is facing relate to pornographic publications depicting children.

 **Rowells TYRES** Ph 433 0313

Stockists of Maxxis Tyres



CALL BERT FOR YOUR TYRE DEALS

New & Secondhand tyres available in most sizes



On Call 24 hrs 094330313
or Bert on 021983724



Car puncture repairs for pensioners - \$5

470 Marsden Point Road, Ruakaka

Courtesy car available by arrangement

Mid winter Christmas Dinner for Waipu seniors



Enjoying a mid winter Christmas dinner with Christmas crackers, ham, chicken and roast vegetables from left: Jan Gemmell, Sharon Turney, Vicky Dignan, Dan Grant, Clarry Moffitt, Robyn Moffitt Janice Dainty and Brian Dainty. Gary Meyer is obscured at the back.

Approximately 120 people came to the annual Waipu Lions dinner held in the Waipu Coronation Hall on Sunday 3 August. The dinner is now held midday rather than in the evening which has been found to suit older people better. Since 2018 Waipu Lions also puts on a free Christmas Day community breakfast from 8am to 9.30am in the hall.



Lions member Juanita McGoldrick with a big dish of chicken for the buffet table.

Ruakaka Stationery & Gifts



Ruakaka Town Centre

Shop local for all your needs:
Stationery, Books, Toys, Magazines
Greeting Cards, Clothing,
Gifts & Souvenirs

**Phone
432 8104**



Open Saturday until 7pm.

Coastal Care PHYSIOTHERAPY

Waipu

Providing Physiotherapy and Acupuncture services

ACC and Private Consultation

Open Monday - Friday

with late appointments available

For appointments and cost phone Cam or Vicki

022 463 6270

THE NEXT PUBLICATION DATE

of the Bream Bay News will be Thursday 22 August

The deadline for all copy is 4pm on

Wednesday 14 August

WEED CONTROL
CROP
GUN / GORSE
PASTURE SPRAYING
LAWN WEED CONTROL

BEN
M 021 762 727
P 09 432 0012

**MCLENNAN
AGRISPRAY**



Aaron Toddun & Associates Ltd

CHARTERED ACCOUNTANTS



- Farm and business accounts • Income tax • GST • PAYE
- FBT • Budgets • Cashflow forecasts • Company formations
- Dealer MYOB Accounting Software

For a professional and confidential service and a free initial consultation call your local Mangawhai Accountant or drop in at our new office, 1 Awatea Street Mangawhai Heads.

Aaron Toddun B/Com Dip/ComLaw

1 Awatea Street, Mangawhai Heads, 0505

Phone/Fax : (09) 431 4881 Mobile: 027 611 0616

Email: aaron@aarontoddun.co.nz

www.aarontoddun.co.nz

Maungaturoto 2nd Hand Shop

Buyers and sellers of quality 2nd hand goods



Here we have an eclectic range of new and used goods. Antiques and collectables, clothing, tools and hardware, kitchenware, furniture, books and much more.

We also do a nice hot takeaway coffee.

So come on down for a browse and find that treasure today!

TRUCK FOR HIRE

We have a furniture moving truck for hire. This is easy to drive and you can do so on your full car license. It also has a tail lift for easy loading.

30 Hurdall St., Maungaturoto
094 318 440

THE NEXT PUBLICATION DATE

of the Bream Bay News will be Thursday 22 August

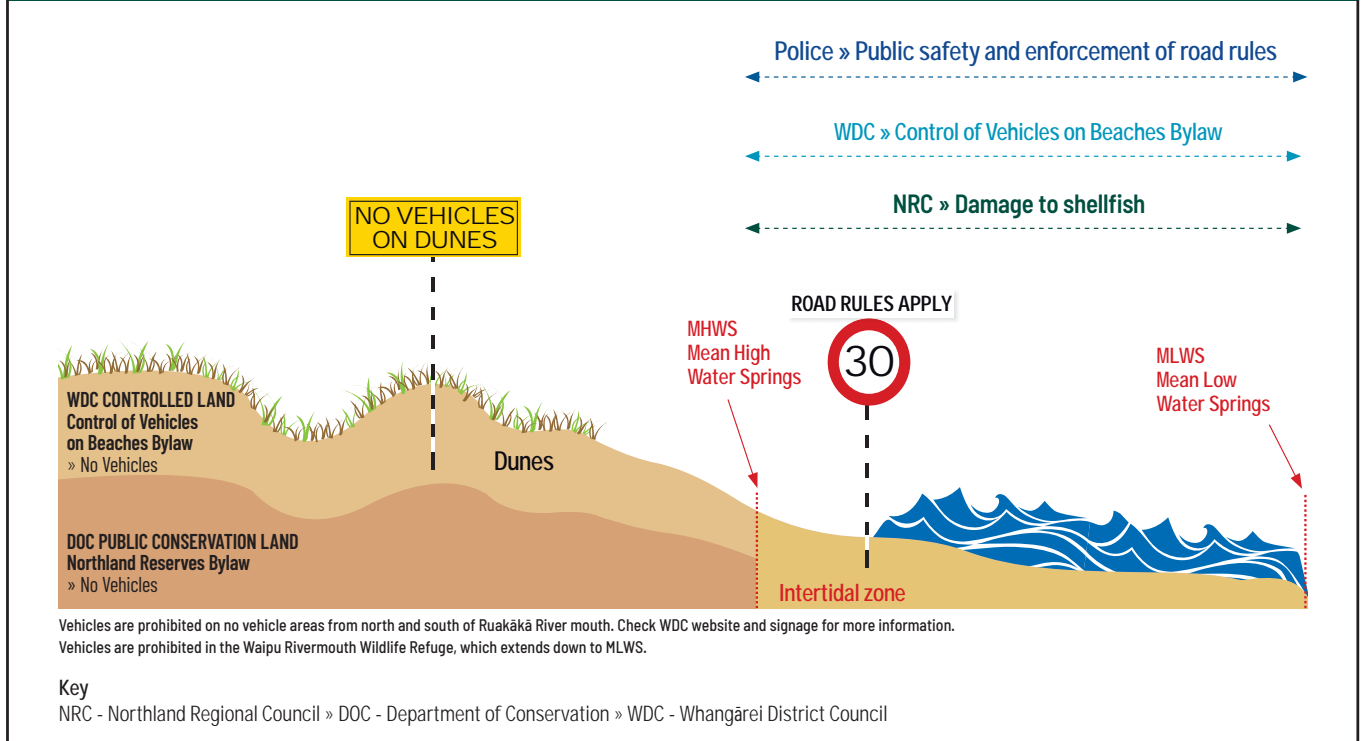
The deadline for all copy is 4pm on

Wednesday 14 August

A flyer to clarify the rules about driving on the beach

Vehicles on beaches and dunes

Agency responsibility for Bream Bay beaches



Celebrating National Poetry Day at The Kauri Museum

NATIONAL POETRY DAY AWARDS AND OPEN MIC NIGHT

Friday 23rd August, 6.30 – 8 pm

• All ages event – \$5 entry •

Poetry and music performance by competition finalists, local artists and open mic

POETRY AND SONG LYRIC COMPETITION

20 July – 10 August – Submissions open

16 August – Finalists announced

23 August – Finalists reading/performance



For more info and full competition details go to www.kaurimuseum.com/events or facebook.com/KauriMuseum



The Northland Regional Council has produced a new flyer, which aims to make the rules about vehicles driving on the beach and into the dunes along Bream Bay clear. No vehicles are permitted to drive in dunes on either Department of Conservation administered land or on Whangarei District Council held duneland. A Whangarei District Council bylaw has created no vehicle areas to the north and south of the Ruakaka river mouth and vehicles cannot enter the Waipu Wildlife Refuge the northern boundary of which is signposted approximately metres south of the Tip Rd. vehicle entrance.

Outside of these *no vehicle areas* vehicles can drive in the intertidal zone but must not exceed a speed of 30kmph and must adhere to normal road rules.

The flyer also lists the various agencies with control over beach driving. Dangerous driving and/or threats to public safety should be reported to the Police : dial 111 in an emergency or *555 to report dangerous driving.

Driving on conservation land or disturbing wildlife should be reported to the Department of Conservation. The DOC hotline is 0800DOCHOT – (0800 362 468) or for general enquiries contact the Whangarei office - 09 470 3300.

Vehicles driving on Whangarei District Council controlled duneland or in the Ruakaka vehicle free zones should be reported to the WDC which has a 24/7 number: 0800 932 463 and damage to shellfish can be reported to the Northland Regional Council Environmental Hotline – 0800 504 639 or for general enquiries phone 0800 002 004.

Bi-law ammendment seeks to limit vehicles to south eastern end of Langs Beach

Vehicles will be banned from most of Langs Beach if a draft amendment to the Whangarei District Council’s Vehicles on beaches bi-law is adopted.

Vehicles would still be able to use the southeastern end of the beach as the Council recognizes this is a popular launching spot for small boats.

“There has been increasing community concern that the growing popularity of the beach for both pedestrians and vehicles is giving rise to increased conflict between these uses,” is given in a statement as the reason for this proposal,

The bylaw amendment would prohibit vehicles at all times from 20 metres northwest of the vehicle beach access off Cove Rd to the northwestern end of the beach.

Submissions on this proposed amendment are due by 5pm Monday 12 August. Submission forms are available on the Whangarei District Council website and from WDC service centres.

Julie Turner - Waipu Primary's new Principal



Julie Turner, settling into her new school

Julie Turner, Waipu Primary School's new Principal says it is lovely to be here. She has rented a house near Waipu Cove and living here permanently helps her to "feel more settled." Her friends have all told her she is lucky to be in Waipu where there is always something exciting going on and she is finding this to be true.

She has joined a local Pilates group, as she is a firm believer in the benefits of staying fit and active. Back in Leigh she took part in a contemporary dance class and tramping is one of her hobbies.

She has already attended a meeting with Marilyn Dunn and Shirley Winters, principals of Ruakaka and One Tree Point schools respectively. She has met Marilyn previously at several gatherings of school principals

Julie comes to Waipu from a job as Principal of Leigh Primary. This school has just 65 children and three classes and for Julie, Waipu Primary with 220 children and 10 classrooms is a big step up and an exciting challenge. For the first time in her teaching career she won't have a class of children but says she will be making sure she gets into classrooms regularly. As well as all those children, she has a lot of extra staff to look after. Two of the Waipu classrooms are combined classes with two teachers in each so the school has 12 classroom teachers. In addition there are: specialist teachers, teacher aides, two office staff and two caretakers.

Julie plays the violin and lists choir singing as one of her interests. Will she be bringing more music to Waipu Primary?

"Undoubtedly" she says.

One of the things people said they would miss when she left Leigh was the whole school singing sessions. She has a meeting planned with Penny Goodall who runs art classes and school productions at the school.

Julie is keen to continue to develop tikanga Maori at Waipu Primary and said the school is fortunate to have people skilled in this subject. Te reo speaking teachers can be difficult to find.

She acknowledges that Waipu's Scottish Heritage also plays a big part in the school's culture. She enjoyed a powhiri held for her at the school on the first day of the term and found it thrilling to be piped into the school hall.

What are her thoughts on children spending time on devices? She believes technology should be used purposefully and not just for its own sake.

Asked about her stance on bullying, she says she doesn't believe this is a big problem at Waipu Primary but acknowledges it does tend to happen everywhere. She said it is important to work with the child doing the bullying and also to teach the child being bullied ways of coping with and deflecting the other's aggressive behaviour. She said some people who have been victimized at school carry the trauma with them throughout their lives and that studies have shown that children don't learn very well if they are feeling anxious.

"The objective is always to meet the needs of the children, to look after their well being to ensure they are safe and secure and happy."

She likes how Waipu Primary children regularly take part in community activities such as helping to plant and restore the dunes at Waipu Cove.

She said it has been recognized that these activities can have good learning outcomes for children who can see meaning and purpose in what they are doing.

She finds the school in good heart and doesn't plan to make any immediate, drastic changes but hopes over time she can bring some of her own strengths and ideas to further enrich the school.

MONTHLY DROP IN SESSIONS

with
Northland Regional Council
Coastal South Councillor - Rick Stolwerk



Monday 12 August

Please note: The Ruakaka session will be at the Ruakaka Recreation Centre

9.00 - 10.00am	Maungatapere - The Office Cafe
10.30 - 11.30am	Ruakaka - The Ruakaka Rec Centre
12.00 - 1.00pm	Waipu - Deli Cafe
1.30 - 2.30pm	Kaiwaka - Kaiwaka Hall entrance
3.00 - 4.00pm	Mangawhai - Mangawhai Museum

Phone 021 823 770

Email: ricks@nrc.govt.nz



NEED A LIFE-CHANGING CHALLENGE?
BECOME A VOLUNTEER AMBULANCE OFFICER WITH ST JOHN BREM BAY

- Be an integral part of your local ambulance service
- Have an opportunity to gain a National Diploma in Ambulance Practice
- Gain valuable new skills

CAN YOU COMMIT TO:

- ONE 12HR SHIFT PER WEEK
- ATTEND FORTNIGHTLY TRAINING
- HAVING A LONG TERM ROLE

WHAT YOU NEED TO VOLUNTEER :

- FULL DRIVER'S LICENCE
- CLEAN POLICE RECORD
- ABILITY TO MULTI-TASK
- HAVE A GOOD FITNESS LEVEL
- A CARING ATTITUDE WITH A TEAM FOCUS



WE WOULD LOVE TO HEAR FROM YOU! PLEASE CONTACT :

BREM BAY ST JOHN AMBULANCE STATION, 4 TAMINGI ST, RUAKAKA

PH: 09 432 7311 Email: station54@stjohn.org.nz

Three wins for Waipu Cove Surf Lifesaving Club at regional awards



Zac Browne-Hale, Kath Manning and Angela Stolwerk with their awards

Waipu Cove Surf Life Saving Club celebrated three successes at the Northern Region Surf Life Saving Awards of Excellence at the Cordis Hotel in Auckland on Saturday 27 July, which recognised outstanding work across the 17 clubs in the region. Zac Browne-Hale won the Rookie of the Year, which is the third consecutive year Waipu Cove has won this prestigious award - Josh Baker in 2017, Emily Stolwerk in 2018.

Club Captain Kath Manning said, "The club is proud of its Rookie program and the way we integrate our Rookies into the patrolling roster, helping coach younger junior surf members, encourage them to compete in Surf Sport and learn about the beach environment so when they hit 14 they are ready to become well rounded exceptional lifeguards."

Kath won administrator of the year and the club won Innovation of the Year for its Beach Safety Education Tour of Northlands un-patrolled beaches. The tour involved 11 lifeguards and four junior surf members travelling to five different locations around the North where there had previously been drownings (Kai iwi lakes, Matai Bay, Taupo Bay, Cable Bay and Matapouri) where it ran rescue demonstrations using rescue tubes, boards and IRB, first aid demonstrations, and education about how to spot a rip and stay safe in the water, as well as junior surf games for the children.

Kath said she was "Proud of our small club making a big impact on Surf Life Saving across the Northern Region."

Two new life memberships at RSLSC



Andrew Forsythe and Tania Ahrens

Andrew Forsythe and Tania Ahrens were both made life members of the Ruakaka Surf Lifesaving Club at the club's annual general meeting held on Saturday 3 August.

Andrew has been Club President since 2013. He completed his lifeguard award last summer and put in a record number of 142 hours on duty.

Tania Ahrens said, "Andrew has been a wonderful leader who has a gift of fostering others to shine in their roles."

"He has been a very compassionate and supportive of other Community Groups using our club and facilities including Blind Foundation, Cancer Children, Alzheimer's Foundation, Girls Brigade, the local Beach Ambassador programme and Surfability enabling us to be the longest running venue for the Surfability programme in NZ."

Tania Ahrens first became a member of RSLSP with her family in 2006. With four children she became an active parent member of the club's Junior Surf section.

She became a lifeguard in 2011 and in 2012 completed her first Surf Official course. Since then she has continued her training and is a much esteemed Surf Official in the Northern Region and throughout New Zealand.

Tania first joined the Committee in 2012 as a Parent Represented and succeeded Ben McKernan to become Club Captain in 2013.

Tania was nominated for life membership by Phillipa Taylor and Debbie Font who said, "Tania and her family were active participants in all club events including competitions and gala's and fundraising. Tania was a wonderful role model for her family and also for other parents in the club."

Tania and Andrew have now swapped roles. At the AGM Andrew stepped into the role of Club Captain and Tania took over the job of Club President.

Marsden Point High Tides

	AM		PM	
Thu 8 Aug	12.55	2.7	1.30	2.6
Fri 9 Aug	1.50	2.6	2.29	2.5
Sat 10 Aug	2.46	2.5	3.30	2.5
Sun 11 Aug	3.45	2.4	4.30	2.4
Mon 12 Aug	4.44	2.4	5.27	2.5
Tue 13 Aug	5.40	2.4	6.19	2.5
Wed 14 Aug	6.32	2.4	7.06	2.5
Thu 15 Aug	7.20	2.4	7.49	2.6
Fri 16 Aug	8.03	2.4	8.29	2.6
Sat 17 Aug	8.43	2.4	9.07	2.6
Sun 18 Aug	9.21	2.5	9.44	2.6
Mon 19 Aug	9.58	2.4	10.20	2.5
Tue 20 Aug	10.36	2.4	10.57	2.5
Wed 21 Aug	11.15	2.4	11.35	2.5
Thu 22 Aug	11.57	2.4	~	~
Fri 23 Aug	12.06	2.4	12.42	2.3

Dead seal pup on beach at Ruakaka

This dead seal pup turned up on the beach in front of the Ruakaka surf club last week and lay on the sand for a few days before being buried by a local person.

The Bream Bay News sent this photo (supplied by Trevor Le Clus) to the Department of Conservation.

Evan Davies, a biodiversity officer with the Department, said he couldn't give a precise cause of death based on the photo.

Mr. Davies said last year he buried a few seals around this size and they seemed to have poor body condition.

"They were juveniles and



may not have picked up the necessary hunting skills and sadly died. Having a few turn up dead around this time is not off concern.

Takahiwai Warriors win Northland Championship title



Takahiwai captain Rosco McFarlane weaves his way through the Otangarei defence

Juanita Hool, Takahiwai manager said she needed a pacemaker to get her through some of the heart stopping moments in her team's final against 2018 champions Otangarei at Toll stadium on Saturday.

Despite the cold blustery weather Takahiwai supporters turned out in force in blue jackets and blue and white painted faces. They were kept on the edge of their seats as the momentum shifted from Takahiwai to Otangarei and back to Takahiwai throughout the game.

With the score at 20/20 and just minutes to go before the final whistle Levita Levita managed to stay calm under pressure and kick home a penalty goal to give his Takahiwai team a two point lead and the Northland Rugby League championship title for 2019. .

The victory came at the end of a perfect season for Takahiwai with 13 wins from 13 games in the run up to the championship final.



Team captain Rosco McFarlane (right) with Mike Hauraki and Ed Wilson raise the trophies won after a hard fought final.

SPORTS RESULTS

Men's Wednesday Golf

31.7.19 15 played Nett and Putts. 1- Bob Cranston 68, 2 - Roger ogle 71, 3 Andrew Baker 72, 4 Gary Meyer 73. Putts Terry Pulman 28.

24.7.19 21 for Stableford. 1 - Roy Law 44, 2- Brennan Wyllie 41, 3 - Gary Price 41, 4 - Roger Ogle 40, 5 Terry Pulman 38. Twos Graham Byles and Alan McIntosh.

Ruakaka Indoor Bowling Club results

02.07.19 Progressive tournament 1st C. Anderson, J. Barnes, J. Holland. 2nd S. Sands, S. Smith, R. Finlayson. 3rd D. Richards, D. Puckett, M. Miller. Cons P. Finlayson, D. Powell, M. Taylor. 09.07.19 Championship Singles 1st B. White, runner up B. Worrell.

16.07.19 1st S. Smith, A. Finlayson. 2nd B. Worrell, R. Finlayson, Sam. 3rd R. Roberts, G. Roberts Cons P. Ivory R. Ivory

23.07.19 1st G. Puckett, S. Smith, D. Puckett. 2nd B. Worrell, P. Ivory, R. Ivory.

3rd P. Finlayson, A. Finlayson. Cons R. Roberts, R. Finlayson, Sam



Mike Hauraki powering his way through the Otangarei defence was named as the game's Most Valuable Player.

MAGIC TYRES

Large selection of used & new tyres

Ph. 438 3534 4 Reyburn St., Whangarei

Snake Bank Challenge raises money for rescue services



Marsden Yacht and Boat Club Commodore Alan Alcock with representatives of the three service clubs, which received donations from left: Andrew Forsyth of the Ruakaka Surf Lifesaving Club and Graeme Allen of the Whangarei Coast Guard and Inga Knier and Barb Lock of Bream Bay St. John,

Funds raised at this year's Snake Bank Challenge were handed to three of Bream Bay's rescue services at a special dinner at the Marsden Yacht and Boat Club held on Friday night, 2 August. Club Commodore Alan Alcock said in its fifth year, the number of paddlers had been down possibly due to blustery conditions but participants in the sail boat races were up significantly

The proceeds were split evening between five groups: The Northland Community Sailing Trust, the club's own youth sailing programme, the Ruakaka Surf Lifesaving Club, Bream Bay St John and the Whangarei Coastguard.

Accepting the money on behalf of the Surf Club, Club President Andrew Forsyth said he hoped people would come to the beach to see what the club was doing. The Junior Surf club was held each Sunday morning from 10.30am over the summer and if someone wanted to bring their visiting grandchildren along, he was sure they could fit them in somewhere.

Graham Allen, Senior Master with the Whangarei Coast Guard said his organisation had been called out 80 times in the past 12 months. Things had been quiet over July as winter boaties tended to take better care of their craft than do those who just take their boats out in summer.

Station Manager Barb Lock accepted a cheque on behalf of Bream Bay St John. She said St. John has had 700 call outs in just this year. She thanked the yacht and boat club for the donation and said it would go towards the purchase of man-equins to use in a new community programme entitled *Three Steps for Life*. The programme will teach members of the public the three steps to take if they find someone unconscious: Dial 111, CPR Cardiopulmonary resuscitation and how to use an AED Automated External Defibrillator

Artists invited to register for the Marsden Cove anniversary weekend exhibition and sale

The One Tree Point Combined Arts Committee is calling for expressions of interest from Northland artists who want to be part of the 2020 Marsden Cove exhibition and sale on Auckland and Northland Anniversary weekend - 26 and 27 January. The event is for artists and craftspeople who in the words of the committee "subscribe to a high degree of competence." To ensure a high standard of work upon registration the committee requests three images of each artist's recent work for approval.

Exhibiting artists are charged \$50 for their stall space, but there is no commission is charged on sales.

Entries close on 31 August or later only be special arrangement. This will be the fourth time the art and craft fair has been held and the third time it will occupy the Marsden Cove Marquee. The space allows for 51 displays with tables and backdrops to show the artist's work.

For further information email: "The Secretary" at otpccombinedarts2020@gmail.com

Love being active?

24/7 gym 9 Takutai Place Ruakaka Ph: 432 7962

- no lock in contract,
- no admin, no joining fee
- \$10 per week
- Ladies only gym
- Unisex gym
- Loyalty program available
- Casual gym \$2 per day (Access during opening hours)

Opening hours :
Mon, Tues, Wed, Fri 8am to 2pm
Thur 8am to 6pm

Come and join us at the Ruakaka Recreation Centre

Very reasonable rates



Lounge available for hire - up to 180 people
Meeting room for hire - up to 15 people
For events kitchen facility available

Activities at the Ruakaka Recreation Centre			
Activity	Day and Time	Cost	Contact
Bream Bay Music&Play	Tuesday 9.30am to 11.30am	gold coin	Deidre 0211761760
Light Circuit Fitness class	Monday 10am to 11am		\$4 AnnMarie 0211693115
Light Circuit Fitness class	Wednesday 11am to 12pm		\$3 AnnMarie 0211693115
Tai Chi	Monday 11am to 12pm		\$2 Annette 4327897
Chi Kung	Wednesday 9am to 10am		\$8 Alice 02102480569
Aerial Yoga	Tuesday 6.30pm to 7.30pm, booking essential		\$18 Barbara 0212998840
Stretching classes	Thursdays 11am to 12pm		\$3 Lu 4328914
Karate	Thursdays 4pm to 7.00pm		\$5 Pam 4320760
60's up	4th Friday of month 10am to 4pm	\$10 annually fee	Robbie 4327329
Music club	1st Monday of month 7pm to 10pm		\$2 Holly 021 842 060
Squash casual	Weekdays-booking essential 8am to 1pm	\$5 p/h	Rec Centre 4327962
Bream Bay Walking club	Wednesday 10am to 10.30am	enquire now	Jeanette 4327971
Pilates	Tuesday 5.15pm to 6.15pm booking essential	\$12, concession(10x)	Barbara 0212998840
Pilates	Thursday 8am to 9am booking essential	\$12, concession(10x)	Barbara 0212998840
Cardio Drumming	Friday 9am-10am		\$10 Nadya 0278660334
Recreational Cheer & Tumble	Friday 3.30pm to 6.30pm		Andrea 0274335051

We are also home to Bream Bay Squash club and Bream Bay United Association Football club

WAIPU LOTTO & POST



Lotto
Postshop
Photocopying

Emailing
Newsagents
All stationery needs



The Centre, Waipu

Phone 432 0900

What's On in Bream Bay

- **THE RUAKAKA RACES** Next on Sunday 11 August. First race at 11.30am.
- **WAIPU BOUTIQUE SUNDAY MARKET.** In the Waipu Coronation Hall. Next on Sunday 11 August from 9am - 1pm.
- **QUIZ NIGHT AT THE RAZZA** Wednesday 14 August. 6pm start Fundraiser for Bream Bay Year 7 & 8 hockey teams. \$60 per team of 6 Phone 432 0028 to book.
- **MARSDEN COVE MARKET** Next market Sunday 18 August from 9am - 1pm. In the marquee at the Marsden Cove Marina
- **NATIONAL POETRY DAY AT THE KAURI MUSEUM** Friday 23 August from 6.30pm - 8pm. Competition finalist will read and perform their entries. Open mic spots available. Music by local artists. Entries to the Kauri Museum Poetry and Song Lyric Competition are open until 10 August. Details on the Kauri Museum website.
- **THE KAURI MUSEUM NORTHLAND PHOTOGRAPHY AWARDS.** Entries open until 12 August. Theme is - This is Northland - Home of the Kauri. Entry details on the Kauri Museum website.
- **TE REO CAFE** at the Waipu Pizza Barn. Held on the fourth Thursday of each month. Anyone who wants to practice speaking Te Reo welcome. Next on Thursday 22 August from 6pm to 8pm.

Ships expected at Marsden Point

Photo by Peter Grant



The coastal tanker Kakariki loading refined oil products on Jetty 2 at the Marsden Point Oil refinery.

- *Kokako* ETA 7 August at 2pm. ETD 9 August at 6am. Loading refined oil products for Lyttelton.
- *Matuku* ETA 8 August at 12.01am. ETD 10 August at 7am. Loading refined oil products for Timaru.
- *Aotearoa Chief* ETA 8 August at 4.30am. ETD 10 August at 3am. Loading cement for Auckland.

- *Silver Oak* ETA 9 August at 3.30am. ETD 15 August at 5pm. Loading logs.
- *Cherry Island* ETA 9 August at 5am. ETD 10 August at 10am. Loading logs.
- *Minerva Emily* ETA 9 August at 12 noon. ETD 10 August at 12 noon. Delivering crude oil for the MP refinery.
- *Stellar Stream II*. ETA 10 August at 4pm. ETD 15 August at 11pm. Loading woodchip for Japan.
- *Victory Venture* ETA 10 August at 6pm. ETD 12 August at 12 noon. Delivery crude oil.
- *Aotearoa Chief* ETA 11 August at 5pm. ETD 14 August at 3.30am. Loading cement for Tauranga.
- *Kokopo Chief* ETA 12 August at 10pm. ETD 14 August at 8am. Loading containers.
- *Awanuiā* ETA 14 August. ETD 15 August Loading refined oil products for Ports of Auckland.
- *Marsden Bay* ETA 14 August at 5.30am. ETD 15 August at 8am. Loading cement for Auckland.
- *Incheon Bay* ETA 15 August. ETD 20 August. Loading logs.

- *Happy Hiro* ETA 15 August at 7am. ETD 17 August at 7am. Loading logs.
- *Aotearoa Chief* ETA 15 August at 8.30am. ETD 17 August at 9am. Loading cement for Tauranga.
- *African Macaw*. ETA 15 August at 4pm. ETD 17 August at 1am. Delivering fertiliser.
- *Venus Harmony* ETA 17 August at 4am. ETD 18 August at 7am. Loading logs.
- *Kokako* ETA 18 August at 5am. ETD 19 August at 5am. Loading refined oil products for Tauranga.
- *Marsden Bay* ETA 18 August at 2.30pm. ETD 19 August at 5pm. Loading cement for Auckland.
- *Matuku* ETA 18 August at 9pm. ETD 20 August at 4am. Loading refined oil products for Wellington.
- *Kokopu Chief* ETA 19 August at 6pm. ETD 21 August at 8pm. Loading LVL for Tauranga.
- *Cronus* ETA 20 August at 5am. ETD 21 August at 5pm. Loading project cargo for Auckland.
- *Aotearoa Chief* ETA 20 August at 8.30am. ETD 22 August at 9pm. Loading cement for Auckland.

TRADES & SERVICE DIRECTORY Ph 09 432 0209

MANGAWHAI LANDSCAPE SUPPLIES

PRODUCTS FOR YOUR GROWING NEEDS...

- Bulk and bag products
- Plants • Fruit trees
- Gifts • Greenwaste
- Organic compost

Mangawhai LANDSCAPE SUPPLIES 107 Mangawhai Heads Rd, Mangawhai Heads Ph: (09) 431 5445

Follow us on [MangawaiLandscapes](#)

O'MALLEY CONTRACTING LTD

CONCRETE

FOR ALL YOUR CONCRETING NEEDS

T: 021 2200 198

E: omalleycontracting@outlook.com W: omalleycontracting.co.nz

Local people read THE BREAM BAY NEWS

It is an effective place to advertise

SHADES DIRECT - SAILS - AWNINGS - CANOPIES

Call for an obligation free design, and quote

Phone 0800 SHADES, 0800 742 337
Rodger 021 274 2337

THE OUTSIDER Aluminium Awning System

or visit www.shadesdirect.co.nz

Blinds and Shutters

Whangarei and Bream Bay

Locally Owned & Operated

ROLLERS - VENETIANS
VERTICALS - SHUTTERS

HUGE Discount for houselots

Free in-home measure & quote
Free Installation

Phone Gail 0211 95 35 35

www.blindsandshutters.co.nz

McAulay Earthworks

Specialising in all earthworks and drainage, rural, residential and commercial.

CARTAGE, GPS DIGGERS & BOBCAT

Covering Waipu, Ruakaka, One Tree Point & Mangawhai

Contact : Aaron McAulay – 027 6228 529

Pacific Painting & Decorating

INTERIOR - EXTERIOR - COMMERCIAL - RESIDENTIAL

20+ YEARS EXPERIENCE - FREE QUOTES

'PAINTING WITH PRECISION'

Ph Johnny Fetelika: 0274 945 563

Covering Bream Bay, Waipu, Langs Beach & Mangawhai

Roland Mosley

Licensed Building Practitioner

35+ years experience in Residential and Commercial Building.

Project Management a speciality.

Correct phone number is: 0275 556 362
rolandmosley78@gmail.com

MOSLEY BUILDERS LTD.

CRACKER LAWN MOWING SERVICES

- RIDE ON MOWING
- PUSH MOWING
- HEDGE TRIMMING
- SECTION MAINTENANCE
- GREEN WASTE RUBBISH REMOVAL

ANDY WALLACE 0273 410 417

The Office Chick

Phone/Text: 027 235 3479
Email: breambayofficechick@gmail.com

Now available for all your administration, accounts and secretarial needs.

Mobile service - your office or ours.
Pick up and delivery service available.

[f](#) theofficechick

AMG AUTO MOBILE GLASS

FAST WINDSCREEN REPLACEMENTS & CHIP REPAIRS

- Mobile service or come to our workshop
- Ultra competitive pricing. • Insurance claims welcome.
- Windscreen replacement in under an hour.

Phone Conrad on 022 036 2916
2/17 Gumdigger place.

TRADES & SERVICE DIRECTORY Ph 09 432 0209



BREAM BAY WATER PURIFIERS

Zane Jones

459 1147 or 021 293 5791
zaneandruth@xtra.co.nz

*Filters
Coolers
Distillers
Ultra Violet
Mob. Homes*

Ph: 09 432 0123

BREAM BAY GLASS

FOR ALL YOUR GLASS NEEDS



Mob: 0274954548

Murray Nash Excavations
Get it right first time



Ph. Owner/Operator
Murray Nash
021 798 025

murraynashexcavations@outlook.com

**This Space
Now available**
\$36.30 gst inclusive
or for regular customers
(six or more insertions)
\$27 gst inclusive

ABSOLUTE CONCRETE

www.absoluteconcrete.co.nz
CULVERT PIPES
Spun and reinforced
Crane truck delivery
Drainage Merchant - Hardware Store
Email: sales@absoluteconcrete.co.nz
Phone (09) 431 2211
KAIWAKA



MACSWAY SCAFFOLDING LTD

WE BUILD, HIRE, ALLOY MOBILES, TEMPORARY FENCING, & SHRINKWRAP

Ph: 09 432 7643 • 0274 726 772
macsway@xtra.co.nz Kapa Road, Ruakaka



Registered Electrician
KIRK ROBBINS
Mob: 021 236 9551

- Residential • Commercial
- Alarm Installation & Maintenance



A and S CONTRACTORS LTD
Ph: 09 430-0453

OPERATING QUARRIES AT WAIPU & RUARANGI
TOP MACHINE OPERATORS
Entrance ways, Driveways, Farm raceways, Building Sites & Earthwork Developments, Portable Crushers for hire for Farm and Forestry Quarry work and roading

LOCALLY OWNED AND OPERATED • PHONE ANYTIME
Find us online at www.aandscontractors.co.nz
Farm races a specialty

Local people read
THE BREAM BAY NEWS
It is an effective
place to advertise

Bream Bay Concrete Ltd.

Free Quotes • Reliable Service • Quality workmanship

- Concrete pads
- Shed floors
- Pathways
- Home floors
- Driveways
- Concrete cutting
- Excavation works
- Retaining walls
- Paving fences
- Profiles for homes & sheds
- Subfloors & boxing

Mark Royals Ph: 432 0107 Mob: 0274 433 130

PD Electrical LTD

New Installs, Renovations, Maintenance

Peter Dick 021-262 9516
Email; peterdick@hotmail.com

Tractor Mulching

100hp tractor with high bodied yffails, mulcher, park finishing mowers, slashing Gorse & blackberry spraying



Also mechanical tractor repairs

Phone Bain McGregor
0274 979 013
or 09 432 0527

Grant McLean
Stock Agent for Bream Bay

Ph mbl 021 7758 48 mbl, hm 432 1602
Email: skincarla@xtra.co.nz

All aspects of stock sales including:
• dairy beef • bobby calves • store cattle • live export heifers
• sheep • pigs • supplying stock for slaughter

Also caters for small block holders.

Carrfields Livestock

Ruakaka Motors

Mechanical and Auto Electrical Repairs and Servicing



Monday - Friday 7.30am - 5pm
Open Saturday morning 8am - 1pm.

Tyres and Batteries
Warrant of Fitness testing
Phone 432 7233

PARADISE QUARRY

PARADISE QUARRY STONEMASONS
Specialists in stunning stone for landscape
Suppliers & installers of northland's own schist for all your stonemasonry & landscaping Requirements

(09) 432 2722 or GEOFF (021) 972 139
www.paradisequarry.com



KAIPARA FLOORING CO
32 Hurdall Street East Maungaturoto
Independently owned & operated

Supply & Installation of Carpet, Vinyl, Vinyl Woodlook Planking
Stockist of 2 & 3 mtr wide vinyl & Carpet Short Ends
Residential & Commercial First Class Installations
Now accepting Q Card with 6, 12 & 18 month interest free terms

For a free measure & quote
Ph Christine (09) 946 9886 or 021 515 415

BLIND PRO

Blinds • Awnings • Shutters

Indoor blinds and outdoor screens

Call us today for a free, no obligation consultation and quote

ph 09 423 9661
website www.blindpro.co.nz
email info@blindpro.co.nz

McQUINN PUMPS

How's Business? ... It's Pumping!

24/7 SALES, SERVICE & INSTALLATION | PUMPS & WATER TREATMENT
PHONE SUPPORT AVAILABLE

8000 627 846
PHONE FREE

NOW AT 72 KIOREROA ROAD
—ALONG FROM RD1 & ITM

Deadline for next issue - Wednesday 14 August

TRADES & SERVICE DIRECTORY Ph 09 432 0209



HANSEN

Drainage & Earthworks

DRAINAGE:
 * Septic Systems * Water Tanks * Truck & Digger Hire *
 * Subdivisions * Domestic * Commercial *
 Certifying Drainlayers

Licensed Contractor for
Waste & Drainage Work



EARTHWORKS:
 * Subdivisions *
 * Farm Work: Effluent Pond Design & Build, Dams, Races *
 * House Sites * Driveway Prep * Lawns * Roothing *

P. 09 432-7877 M. 027-432-7877
 E. karl@hansende.co.nz

Ash Worthy Small Block Mulching



NO JOB TOO SMALL!
 027 313 4429



Brian the Painter
Decorator, Restorer, Handyman
Property Maintenance

No job too small,
 No travelling time charges
Free advice

Phone 0274 882371 Or 09 431 4882
 Email: hollis@hotmail.co.nz




MP & RA BROWNE CONTRACTORS

4T-DIGGER – BOBCAT – TIP TRUCK

Property Maintenance – Driveways – Building Sites
 Stump & Tree Removal – Hole Boring – Chain Trencher
 Calf Shed and Stockyard Cleaning

KAIPARA – WHANGAREI – RODNEY

Phone Matt: 021 199 6677
 Email: mprabrownecontractors@gmail.com

LOW COST DRIVEWAYS & SURFACING NEEDS
 Concrete or asphalt beyond your budget ...

We have the next best solution for a fraction of the price.
 Call for a quote, you'll be pleased you did!
 Paradise Quarry Contractors
Geoff (021) 972 139 or (09) 432 2722
 For contractors who 'think' ...



ALMOND CONTRACTORS

- All aspects of Drainage and Earthworks
- Commercial and Residential
- Retaining and Foundation works
- Earthworks - house cuts -farm and race - drilling

CERTIFIED DRAINLAYER LBP BUILDER

almondcontractors.co.nz
 Contact- info@almondcontractors.co.nz 021 134 4993

JC Repairs Bream Bay

- Interior Exterior Renovations & Repairs
- Decks, Fence, Retaining
- Minor Earthworks (2 Tonne Excavator)
- Swimming Pool & Spa Repairs and Servicing (25 years experience)

10% discounts for new customers

John Owner/Operator
021 154 8801

jcrepairsbreambay@gmail.com SEE OUR FACEBOOK PAGE

M.V.B. Electrical Ltd.
 Working in Bream Bay since 1977

Repairs • Installations • Advice

Mike van Blommestein

Phone: 09 432 1015 • Mobile: 0274 783 749
 Email: mikevanb@xtra.co.nz

Bay View

INTERIOR PLASTERING

FRASER KNIGHT
 Ph 09 433 0115 Mob 0274 987 515

GRAEME BINT FENCING

GOOD RATES, NO JOB TOO SMALL

09 432-1599 or
 027-292-2833

grbint@xtra.co.nz

MANGAWHAI SMALL ENGINES
 Grasshopper, Husqvarna and Honda dealer




194 Molesworth Drive, Mangawhai
 Ph: 09 431 5270 or Mb: 021 655 481
 Email: msengines@xtra.co.nz

FLOORCRAFT CARPET & VINYL

Your First Choice in Flooring

Ed Fudge 021 1944 020
 E-mail: floorcraftfirst@gmail.com
 Web: www.floorcraftwhg.co.nz
 Freephone: 0800 46 47 48 Ph: +64 (09) 438 0527
 49 Port Road, Whangarei



BREAM BAY ACCOMMODATION

RUAKAKA

STUDIO - HOLIDAY HOMES - B&B

BOOK ONLINE OR PHONE

Ph: 09 432 7025 Mob: 021 2722 739
 website for online bookings: www.breambayaccommodation.com

LAWSON CARTAGE

FOR ALL YOUR EARTHWORKS & CARTAGE NEEDS

Suppliers of: topsoil, compost, woodchip, bark, sand, pebble, rocks and firewood.

Ph/Fax 09 432 8418 or 021 768 940

458 Marsden Point Rd. PO Box 142, Ruakaka 0151
 email: lawsoncartage@xtra.co.nz

Carrs Quarry
 One Tree Point Road
 Ruakaka



Crushed Aggregates Available ex Quarry

Contact us: Angus 027 244 6100
 Walter 021 519 605

This Space Now available

\$36.30 gst inclusive
 or for regular customers
 (six or more insertions)
 \$27 gst inclusive



asbestos removal

Garry Smith
 Mob 027 738 7888

Textured Ceilings
 Asbestos Fibrrolite
 Asbestos Lagging

Ph 09 432 7305
 Fax 09 432 7304
 email: gpasbestos@xtra.co.nz
 14 Bream Bay Drive, Ruakaka, 0116

FOR SALE

HAY 100 small bales of hay. \$12 each. Ph 021 135 6471.

KUMARA New seasons. Just dug. Also agria potatoes. 34 Marsden Point Rd. or Phone 432 7477 anytime.

TIMBER & HARDWARE FREE LOCAL DELIVERY Bream Bay Merchants BuildLink 29-33 Kapa Rd, Ruakaka PH: 09 433 0077

www.breambaymerchants.co.nz

GENERATORS & WATERBLASTERS Bream Bay Merchants BuildLink 29-33 Kapa Rd, Ruakaka PH: 09 433 0077

www.breambaymerchants.co.nz

CAR BATTERIES Bream Bay Merchants BuildLink 29-33 Kapa Rd, Ruakaka PH: 09 433 0077 www.breambaymerchants.co.nz

GARDEN SHEDS Bream Bay Merchants BuildLink 29-33 Kapa Rd, Ruakaka PH: 09 433 0077 www.breambaymerchants.co.nz

KEY CUTTING Bream Bay Merchants BuildLink 29-33 Kapa Rd, Ruakaka PH: 09 433 0077

www.breambaymerchants.co.nz

BUILDING A DECK OR FENCE? FREE LOCAL DELIVERY

Bream Bay Merchants BuildLink 29-33 Kapa Rd, Ruakaka PH: 09 433 0077 www.breambaymerchants.co.nz

WORMS FOR SALE
For worm farms
Phone 432 0209
or text 027 432 0070

WATER TANKS
09 431 2211
sales@absoluteconcrete.co.nz

SERVICES OFFERED

GLENMOHR
water care
WATER TANK CLEANING
No need to empty your tank
• Vacuum or full scrub
Phone Mark Draper
09 432 0655 or 0274 707 607

Cut it! Chip it! Grind it!
Tree Removal
✓ Pruning
✓ Chipping
✓ Stump grinding
Qualified & Insured
Ph Scott (0800) 468-9663
Arborcare
Tree Maintenance

Waipu Boarding Cattery
Excellent care and accommodation
Ph Sue 432 0394

Direct Tech
www.directtech.co.nz
Wi-Fi solutions,
Computer troubleshooting,
System clean-ups
Iain Robertson
020 4767 000
Based in Waipu

HEALTH SHUTTLE

LINKING HANDS
Health Shuttle
Phone
(09) 431 8969



Local people read THE BREAM BAY NEWS
It is an effective place to advertise

FOR CHILDREN

MAINLY MUSIC



Mainly Music is on each Wednesday at 10.00am in the Waipu Presbyterian Church Hall All welcome

TOY LIBRARY

In the Waipu Presbyterian Church Hall All families and Grandparents welcome. Wednesdays after Mainly Music 11am to 1pm. Contact Lynnette 432 0441 & Julie 432 0388 or 021 072 6710

VOLUNTEERS NEEDED

COMMUNITY PATROLS
CPNZ
NEW ZEALAND
Bream Bay Community Patrol
Working with the Police to reduce crime in the Bream Bay area.
To inquire about joining, contact Senior Constable Martin Geddes
Waipu Police Station – 432 4030

Waipu hospice
Our Values: Integrity Respect Teamwork Compassion Excellence Stewardship
Volunteers needed
Hours Monday to Friday 9am -3.30pm
Saturday 9am - 1pm
Donated goods welcome
Phone 432 1342 for pickups.

20 Kapa Rd, Ruakaka
Open: 10.30 - 1pm : Tuesday, Wednesday & Thursday
Ph. 433 0252
SCAVENGERS
The recycling shop which gives its profits to the community
Please phone if you are bringing in more than a boxload.
After Hours: Ph. Head Scavenger YVONNE JUDGE 432 7051

CARAVAN FOR SALE

CARAVAN New Zealand built 2004 Prestige Altra. Four berth. Mod cons for off grid. TV, Sat dish, solar, toilet, shower, awnings. Excellent order \$29,500k. Phone 027 226 3588

VEHICLES FOR SALE

YAMAHA VINO 50cc 2010

19,000km
Ride on car licence
New tyres,
Top box,
Serviced.
Three months rego for new owner
\$1800 ono.

Ph. 027 494 2635



THE NEXT PUBLICATION DATE

of the Bream Bay News will be Thursday 22 August
The deadline for all copy is 4pm on
Wednesday 14 August

CLASSIFIED ADVERTISING

Costs \$5 for up to 20 words and 20c for each additional word. Boxed, approx 4cm adverts cost \$15 plus GST
Phone your advert through to 432 - 0209 email to: breambaynews@xtra.co.nz
Post to: Bream Bay News, RD 2 Waipu 0582 or leave it with payment at *The Waipu Post shop* or *the Ruakaka Gift and Lotto Shop*

LIBRARY HOURS

Ruakaka Community Library
Takutai Place, Ruakaka
432 8406
Mon - Fri 9:30am-3:30pm
Sat 9am-1pm
JP Service available
Saturdays 10am - 11am.

WAIPU COMMUNITY LIBRARY
Monday, Wednesday, Thursday, Friday & Saturday 10am - 1pm.
Tuesday 10am - 4pm.
Phone 432 0375

PUBLIC NOTICES



Business & Community Incorporated

Invites you to their **AGM** meeting

Tuesday 20th Aug 5.30pm - 6.30pm

AT SALT N PEPPER CAFE WAIPU

With guest speaker TBC

New volunteers and committee members needed

Nibbles provided BYO

Come and support the Christmas Parade

Winter In Waipu, promotion of Waipu and Street Markets

For more info contact Shane 022 360 4444

CLASSES

KIDS AFTER SCHOOL ART CLASSES

Mon and Wed - Kids after school art classes

Adults beginners clay handbuilding class

Day or night class options

Starting in term 2 2019

Contact: claire@sculpturenz.com or 0212722294 for further info

JUSTICES OF THE PEACE



Justices of the Peace

Ruakaka

Ms AP Paki 09 432 8262/021 149 1625

Darrell Trigg 09 432 7256/021 332 901

Ken Orr 09 432 8215

JM Archibald 021 227 4355

Wayne Buckland 09 432 8226 Ext 703

PH Goonan 021 824 825

One Tree Point

Jules Flight 09 432 8336/0274 777 210

Sir John Goulter 09 432 7868/021 612 442

MM Jolley 027 415 9486

Takahiwai

NHG Grant Pirihi 09 432 7350/021 148 2531

Waipu

Trevor Vaile 09 432 0400 wrk - 09 432 0301

Mr. L.M. Hitchens 09 432 1852 or 027 217 8631

Mr. D.A. Scott 09 929 9729 or 027229 9752

Ken Couper 027 292 0524

Peter Couper 09 432 0524 or 027432 1999

Make contact with a Justice of the Peace

(on any day) and make an appointment to have your documents completed.

Only current Association members are listed.

MISSION TO SEAFARERS (MARSDEN POINT) INC

AGM

15th August 2019 at 1500 hours (3pm) in the Mission Centre, 21A Ralph Trimmer Drive, Marsden Point.

All Welcome.



Bream Bay Medical Centre Ltd.

Monday - Friday: 8.30am - 5pm

Saturdays: 9am - 12pm

Please advise at time of booking if you require an extended consultation.

Marsden Point Road, Ruakaka Town Centre, Ruakaka. Ph: 432 8060 Fax: 432 8230

WAIPU COVE RESERVE BOARD AGM

Will be held on Sunday 25th August at 11am In the All Weather Room at Camp Waipu Cove. Contact details are Camp Waipu Cove, 869 Cove Road, Waipu Cove, 09 4320410.

AGM

MenzShed Waipu Inc.

10am Tuesday 13 August 2019 At the MenzShed building in Waipu Heritage Precinct 300m down the lane next to Waipu Museum Vehicle access via Halifax Dr (In Nova Scotia Subdivision) (menzshedwaipu@gmail.com)

BREAM BAY SUNDAY CHURCH SERVICES

Presbyterian Camellia Ave, Ruakaka: 8.45am. The Centre, Waipu: 10.15am. Prayer Service: 7pm

Encounter 223 Marsden Pt. Rd, Ruakaka, 10am.

Anglican 1st and 3rd Sundays - St Paul's Ruakaka 2nd and 4th Sundays - St Peter's Waipu, 5th Sunday - St Nicholas Mission to Seafarers'. Marsden Point All services start at 9.30am.

Catholic Holy Family Church, Ruakaka, 10.30am. Mass

Lifepoint. 300 One Tree Point Rd, 10.30am.

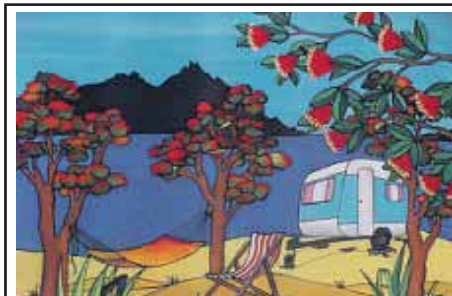
MARKETS

Handmade & Homegrown
ARTS | CRAFTS | FOOD

Waipu Boutique Market SUNDAY

Sunday 11 August
9:00am - 1:00pm
Waipu Coronation Hall

Claire | 021 272 2294
Kate | 021 064 5698
www.waipumarket.co.nz



Marsden Cove MARKET

Sunday 18 August 9am - 1pm

in the marquee at the Marsden Cove Marina

ART + CRAFT + ARTISIAN + PRODUCE

Bream Bay Community Support Trust

Takutai Place, Ruakaka Phone 09 432 7197

- Free medical clinic each Wednesday 9am - 12noon.
- Free budgeting service by appointment - 432 7197
- Te Atarangi Te Reo class. Wednesday evenings 5.30pm - 8.30pm.
- Narcotics Anon Wednesdays 6.30-730pm

The Bream Bay Community Trust offers:

- A Family Centred support team.
- Family violence Intervention advocacy
- Advice and referrals to other agencies and relevant support services.

NORTHPINE COMMUNITY LIAISON COMMITTEE

This committee meets periodically to review the environmental performance of the Northpine timber manufacturing plant in Waipu, in consultation with representatives of the local councils. Any Waipu resident with concerns about the environmental effects of the Northpine plant should notify the Northpine office (432 1155). Concerns will be recorded, considered and subsequently reviewed by the liaison committee. The Independent chairperson of the liaison committee is Steve Goldthorpe (432 0532)



Harcourts Bream Bay



FOR RENT

\$485.00 p.w. 4  2 




15 Taotahi Walk, Ruakaka

Fall Asleep to the Sound of the Waves!

This spacious home is located only a hop, skip and jump from the beach. The section is fully fenced and perfect for families. If you would like to be in the highly sought after beach suburb of Ruakaka, look no further than this tidy home. Three bedrooms, Open plan living & dining area, Kitchen with electric + gas cooking & dishwasher, Bathroom with shower & toilet, Laundry with second shower and toilet, Sleep out with fourth bedroom, Fully fenced section, Close to schools, shops & the beach, Off street parking, Pets negotiable

Initial Move In Costs: BOND: \$1940.00 TWO WEEKS RENT: \$970.00 TOTAL: \$2910.00



Tammy Drinkwater
Business Development Manager
021 892 443 | 09 438 2054
tammy.drinkwater@harcourts.co.nz



Keely Stubbs
Senior Property Manager
021 740 219 | 09 438 2054
keely.stubbs@harcourts.co.nz



Dave Nicholson
Senior Asset Manager
021 467 312 | 09 438 2054
dave.nicholson@harcourts.co.nz



Robyn Ihaka
Tenancy Manager
021 064 8093 | 09 438 2054
tenancymanager1@harcourts.co.nz

09 438 2054 | breambay@harcourts.co.nz | Unit 8, 30 Rauiri Drive, Marsden Cove
PO Box 5030, Whangarei 0110

Optimize Realty Ltd Licensed Agent REAA 2008



Waipu Real Estate



RENOVATED HISTORIC FARMHOUSE
\$769,000

- Beautifully restored, 2 bedroom home
- 3.49 hectares – located in sheltered valley
- High ceilings, modern light kitchen
- French doors lead to sheltered porch
- HUGE 114m2 high stud shed
- Only 3.5kms or 5 minute drive to Waipu

PRICE REDUCED. ALL OFFERS CONSIDERED

Roger King 0277 555 001 **WPU 11104**
or a/h 09 432 1381



WATERFRONT MAGIC
PRICE BY NEGOTIATION

- 21 hectares – absolute waterfront
- 3-bedroom character home
- Swimming, fishing, kayaking on your doorstep
- Double garage with internal access
- Plenty of room to pitch the tents
- Cross the estuary, walk to the beach
- Resource consent to sub-divide

The perfect property for the entire family to gather. Nothing compares to a summer at Waipu Cove.

Lyndie Mullins 021 101 6389 **WPU 11108**



IMMACULATE ON SEASCAPES
\$805,000

- 4 bedroom, 2 bathroom brick & tile home
- Set on 2011m2 of beautifully landscaped grounds
- Immaculately presented with rural outlook
- Sunny, bright and spacious
- Short walk to the estuary for swimming
- Walking and cycling track across the road
- 2.4kms to Waipu township for all amenities

Potential to sub-divide!

Roger King 0277 555 001 **WPU 11111**
or a/h 09 432 1381

The Centre, Waipu www.waipurealestate.co.nz 09 432 4000



Proud Sponsors of



Town Centre, Ruakaka
Ph: 09 433 0300
Email: info@bbrealty.co.nz
www.bbrealty.co.nz

NEW LISTING

FAMILY SIZED LOW MAINTENANCE LIVING



This fabulous, single-level brick home offers the perfect solution for all your family's needs. Robust construction, plenty of space and seamless flow to the spacious outdoor entertaining area with flat landscaped grounds and rural views. Four bedrooms, three bathrooms, open plan living, extra lounge & multiple car-garaging with room for more toys or a workshop adds further appeal to an already enticing package.

\$829,000—www.bbrealty.co.nz #3953
FIONA SOUTHRN MNZM ph 021 317 775

NEW LISTING

HARBOUR SIDE—HARBOUR VIEWS



This property shouldn't be missed if sea views & position are your priority. Immaculately presented & especially well designed giving privacy to family members. Lounge, bedrooms & bathroom downstairs with main bedroom, ensuite, separate toilet & living area upstairs flowing out to a veranda for those summer evening BBQ's.

Set Date of Sale, closes 2pm Tuesday 20th August 2019 (unless sold prior)
— www.bbrealty.co.nz #3952
FRANCIE STOKES ph 022 656 0165

NEW LISTING

STOP DREAMING ... SEIZE THE REALITY



Completed now in the sought after Marsden Cove estate. Brick & Linear weatherboard, top quality interior fit out with the kitchen having granite bench tops, large pantry, lacquer cabinetry, stainless steel Miele appliances, bathrooms with double vanities, quality tiles & 60oz carpets throughout. Four bedrooms, (or three plus family room), two bathrooms. Sunny lounge with gas fire-place. Just bring the furniture and move in.

\$829,000—www.bbrealty.co.nz #3910
JOANNE DEWSON AREINZ ph 021 780 622

NEW LISTING

SERIOUS SELLER LOOKING FOR OFFERS



Designed for a lifetime of enjoyment, the open-plan living areas here offer plenty of versatility. Year-round entertainment is assured with a gorgeous covered patio, encased by a peaceful and tranquil, well laid out rear garden, all fully fenced on a level section of approx. 660m2. Four good sized double bedrooms, two bathrooms, generous open plan kitchen, dining and living area plus extra family room.

\$729,000—www.bbrealty.co.nz #3931
LYNN PARKER ph 021 795 546

WHERE ELSE ??



Would you find 5 car garaging PLUS an extra-large workshop, with an immaculately renovated home. With all living, two bedrooms & a bathroom upstairs, an open plan area downstairs with bathroom & laundry this home offers a myriad of options for a granny flat, home-stay or work from home. Great views, our iconic Mt Manaia framed in the kitchen & dining windows, Whangarei Harbour views from everywhere else.

\$765,000— www.bbrealty.co.nz #3918
JANINE GOLDSMITH ph 021 432 793

IT'S ALL ABOUT THE LIFESTYLE



Immediate possession. Designed & created for wellbeing. Backing onto DOC land & then the unspoiled Uretiti Beach. 236m2 masonry homestead that has been completely refurbished. Seamless indoor outdoor flow via bi-fold doors from the dining, living & 3rd bedroom to a covered veranda. 34 acres of level land, 119m2 high stud barn, great race & yards. Expressions of Interest over \$1.6 Million (+ gst if applicable) - www.bbrealty.co.nz #3925

Open Home—Sunday 2.00—2.45pm
93 Uretiti Road, Waipu

JANINE GOLDSMITH ph 021 432 793