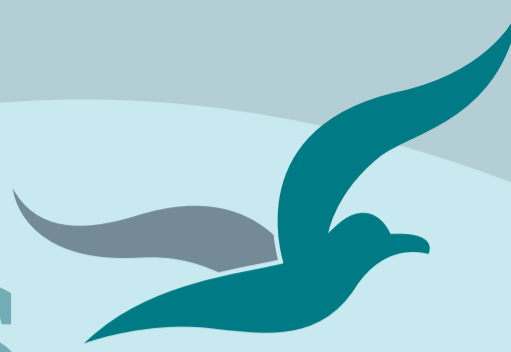


Bream Bay News



Est.1967 | Locally owned and operated | Delivered FREE twice a month 12 March 2026

Affordable Quality

- * SECURITY DOORS
- * INSECT SCREENS
- * SHOWER DOORS
- * BLINDS
- * AWNINGS
- * WARDROBE SYSTEMS

www.homeplus.co.nz



34 Albert St
Whangārei

Est. 1977

PH: 438 9452

whangarei@homeplus.co.nz

Renewed push for a roundabout at the McCathie Rd. Port Marsden Highway intersestion

Following the recent fatality at the McCathie Rd., One Tree Point Rd. and Port Marsden Highway intersection there is a renewed push to have a roundabout installed there.

The Ruakākā Residents and Ratepayers recently took its concerns to the New Zealand Transport Agency after an approach by residents of the Bream Bay Village. The reply received from the transport agency is that there is no upgrade of the intersection planned at present.

The Bream Bay News got the same answer when it raised the issue on behalf of Bream Bay College a year ago. College Deputy Principal Mark Bayer was worried about student crossing the intersection on foot to reach a popular gym in Waiwarwara Drive off One Tree Point Rd.

Sharon Booth said this is something the association is very concerned about however; as it would likely cost millions of dollars to build a roundabout it would be unlikely to happen. However she believes that if local people keep pushing perhaps something will be done. The roundabout is particularly treacherous as trucks travel at speed from and to the Port on the highway. Also crossing from One Tree Point Rd. to McCathie Rd. involves a dogleg where you turn right onto the

Continued on page 3

Marsden Material Girls share skills and enjoy companionship at the Marsden Yacht and Boat Club



Irene Kilpatrick and Sandra Johnstone display a quilt Irene is working on at a gathering of the Marsden Material Girls in the Marsden Yacht and Boat Club at One Tree Point.

Story and more pictures on pages 10 and 11



Langs Beach 15 Lang Rd

751_{sqm} 5 2 3 1 1

Price by Negotiation

Christine Birss 027 235 4323 christine.birss@bayleys.co.nz

MACKYS REAL ESTATE LTD, BAYLEYS, LICENSED UNDER THE REA ACT 2008

Privately located, yet easy stroll to the beach !

Are you looking for somewhere which is close walk to the beach and with loads of space for family and friends, then read on?

If space for a large or extended family is an important factor in your search for the perfect beach house, then this property will tick all the boxes. Located in the middle area of Langs Beach, within easy walk of the sand this 5 bedroom (plus a study) beach house offers plenty. Built to accommodate a multi-generational family it offers easy relaxed living, with spaces for all to relax or socialise. Constructed in colour steel with a colour steel roof and plenty of decking. Vendor happy to include furniture and most other items

Price reduced. Vendor ready to go

bayleys.co.nz/1154106



Next issue of the Bream Bay News out on 23 April

I am taking a break. After 22 years running the Bream Bay News I think I deserve one.

I have been invited to visit Sichuan in China by my son and his Chinese partner. It should be an interesting trip and is an opportunity I don't want to miss out on.

This will be the only edition of the Bream Bay News for March 2026

I will be back at my desk on Monday 13 April with renewed energy to get to work on an issue for publication on 23 April.

Marilyn

EDITORIAL

I wish our leaders would take a more principled stance in world affairs

I have stopped buying walnuts because they come from the America but it seems there are many other items and services I, and people who are thinking along the same lines as me, need to stop using.

International Criminal Court Judge Kimberly Prost has been sanctioned by the United States because she sat on a panel, which authorized an investigation into atrocities committed in Afghanistan by various people, including American servicemen. Judge Prost is a Canadian but finds her banking services are disrupted and she cannot confidently operate her credit cards even though her accounts are not based in America. American sanctions have a long reach. The university in New Zealand Judge Prost is visiting attempted to reserve her a hotel room but when her name came up the booking was blocked.

It's a complicated, frightening world right now. Trying to understand what is going on internationally is difficult with Israel and America bombing Iran and Iran sending drones to do damage in neighboring states that host US bases. There are reports that Russia is assisting Iran to target American military sites in adjacent countries, the same Russia led by Vladimir Putin who had the red carpet rolled out for him when he met US President Donald Trump in Alaska in August 2025.

In NZ Iranian immigrants have protested against the murderous Islamic Republic regime in their home country and in support of the American attack. However I have heard commentary that the Israel and American attacks are likely to bolster internal support for the theocracy.

Pete Hegseth, the United States Secretary of War boasts how America has by far the strongest military force in the world and "we are dominating the seas and owning the skies."

But might is not right. The country of Iran, formerly Persia, is over 2500 years old. Its history and the right to self determination of its people should be respected.

More than ever we need international conventions such as those overseen by the United Nations and the International Criminal Court. Yet these institutions are being undermined by the failure of countries like our own to defend their status in the face of assaults by the world's big military powers.

As of March 7 2026 over 1400 people had been killed in the conflict between Iran, Israel and the United States, which began on February 28 2026. The vast majority of fatalities are in Iran with at least 1332 civilians killed in US and Israeli strikes, including 150 little girls killed with their teachers in a US strike on their school. Hezbollah has joined in the fight, which Israel has used as an excuse to attack Lebanon.

Looking out my office window I am glad I live in a peaceful place and long may it stay that way. We do have our battles - against the McCallum sand mining proposal and the four-lane expressway our Government wants to push through our farms and homes. I would add four-wheel drivers destroying our sand dunes. I am onside to fight these battles but I also care about what is happening internationally.

I heard a commentator saying that most New Zealanders are not concerned about a conflict going on in the Middle East and the confused non-committal position our Government has taken won't matter too much come the election. I disagree. I want to feel pride in my country and its leaders and to see us take a principled stand in world affairs. I believe many New Zealanders feel this way.

The Middle East conflict has closed the Strait of Hormuz, which around a fifth of the World's oil supply is shipped through. Oil refineries in Kuwait are cutting back on production, as they can't export their product. Consequently the cost of petrol and with this the cost of just about everything delivered by trucks to our supermarkets is likely to go up

One way to help buffer New Zealand against this kind of international shock is to build more renewable energy capability. We have a big solar farm under construction in Ruakākā and some massive turbines for a new wind farm were recently trucked to a site near Dargaville - both of these moves in the right direction.

On an individual household level I suggest invest in an electric car. Once the initial purchase is made - and second hand EVs are becoming more affordable - you will be saving heaps of money on a weekly basis and not have to worry ever again about the price at the pump.

Marilyn



Expert skin cancer checks and treatments

As your skin cancer doctors, it is our mission to save lives by making skin cancer care affordable and accessible to all Northlanders. Our focus is on the early diagnosis and effective treatment of skin cancer in a friendly and welcoming environment.



09 438 2188 | admin@skincancerdoctors.co.nz | 11A Norfolk Street, Whangarei
www.skincancerdoctors.co.nz



"Our Family Caring for Your Family"



Local & New Zealand Owned.

0800 000 929

whittakersfunerals.co.nz | admin@whittakersfunerals.co.nz
25 Kapa Road Ruakaka 0171 | PO Box 241 Ruakaka 0151

THE BREAM BAY NEWS

is published by Bream Bay News Ltd. Address : RD 2, Waipu
Phone: 027 432 0070

E-mail: breambaynews@xtra.co.nz Website: www.breambaynews.co.nz

Editor - Marilyn Cox. Accounts - Susan McRae.

Technical assistance - Geoff Spencer

Advertising design and website maintenance - Megan Lea.

Printed by NZME

Phone the BREAM BAY NEWS 027 432 0070

or email: breambaynews@xtra.co.nz

if you know of something interesting going on in Bream Bay

Renewed push for a roundabout at the McCathie Rd. Port Marsden Highway

Continued from page 1.

highway and then sharp left.

There are some safety tips for driving though busy intersections on various Internet sites. Apart from the obvious, look left, look right then look again, come to a complete stop at STOP signs and never overtake near an intersection here are a few extras.

- If you are stopped in the middle of the road waiting for traffic to clear to make a right hand turn keep your steering wheel straight. If you have it turned to the right and are shunted from behind you could end of in the path of oncoming traffic.

- If there is a vehicle approaching indicating it is turning left make sure there isn't a motorbike or small car obscured behind it before you make your move.



A driver's view of the McCathie Rd / Port Marsden Highway and One Tree Point Road intersection.

- Don't get rattled by impatient drivers behind you. Wait until you are absolutely sure the way is clear before crossing the intersection.

Hands off our Sand protest this Sunday on Ruakākā Beach

“Hands off our sand” is the message Bream Bay Guardians hope will be made loud and clear at a beach protest at Ruakaka on Sunday 15 March.

McCallum Brother Ltd. currently has an application going through the Government’s Fast Track process. The Guardians hope a big crowd will gather to drive home to the Government just how unpopular this proposal is.

To take part gather in the car park alongside the Ruakākā Surf Lifesaving Club at 10.30am. There will be live music and Green MP Hūhana Lyndon will be the compere.

Gala dinner to celebrate 150 years of rugby in Waipu

The Waipu Rugby Club turns 150 year old this year. The milestone will be celebrated with a reunion dinner on Saturday 19 September, a celebration game on that same afternoon and a mix and mingle session on Friday 18 September.

The history of how the game came to Waipu is written on the walls at the clubroom entrance. A version of the game was first played at the Braigh School with the boys using bullock bladders for balls.

In 1875 after a young man returned from a trip to Auckland and shared his enthusiasm for the game Waipu adopted the 15 aside game and by 1876 Waipu was one 56 clubs in New Zealand.

The Waipu Rugby Club has played an important part in the fabric of the Bream Bay community and the Bream Bay News hopes to catch up with club stalwarts past and present to record some of their memories in the next 23 April edition.

BREAM BAY CURTAINS AND BLINDS AND SHUTTERS

PH 0204 632 432 FOR A FREE IN HOME CONSULTATION CALL SUE

AVAILABLE 7 DAYS A WEEK COVERING WHANGAREI TO MANGAWHAI, INCL KAIWAKA

CALL SUE TODAY

0204 632 432

Builders of Quality Family Homes



Waihopai 128sqm

\$379,000 incl gst

Includes: plans, consent, kitchen, appliances, tinted double glazed windows, tiles, carpet, blinds, heatpump.



Wayne Pickerill Managing Director

“Hi, I’m Wayne Pickerill, Managing Director and Project Manager for your new Fowler Home. Enjoy quality and all the benefits of dealing with an efficient, low overhead, nationwide company, where I will take a personal interest and be involved through to completion.”



FOWLER HOMES™

More designs at www.fowlerhomes.co.nz or visit our office at 63 Walton St, Whangarei. Phone Wayne Pickerill 438 4840

Progress on the Ruakākā to Marsden Cove Shared Path

As anyone who has driven down Marsden Point Road recently is aware, work is progressing on the concreted off-road shared path which, when completed, will provide a five kilometre off-road link between the Ruakākā Town Centre and Marsden Cove.

The Bream Bay Shared Path Group received \$400,000 from the Whangārei District Council to get the project underway and, in addition, has had substantial support from Trigg Construction, Hansen Drainage and Earthworks and Meridian Energy.

With funds at hand the pathway can be extended to around a fifth of its final length - approximately a kilometre.

Meanwhile the Shared Path group is seeking further funding. A raffle with an electric bicycle donated by Melo Yelo ebikes, Whangārei as first prize raised \$10,000 for the cause and demonstrated the level of public support in Ruakākā and One Tree Point for the project



COMMUNITY PROTEST

HANDS OFF OUR SAND

15 MARCH

Ruakaka Beach. 11:00am
Gather in carpark from 10.30am

There is no concrete crisis.
There is a mega rich corporate
coming to a Bay near you.
Stop the Auckland Dredge!

An application is currently going through Convenor/Fast Track panel process.
Be seen. Be heard! Join us to show Wellington we don't need the Auckland dredge.

Council gets plenty of feedback on its Control of Vehicles on the Beach Review

A preliminary count of feedback received by the Whangārei District Council on the review of its Control of Vehicles on the Beach by Law counted 1,247 items of feedback during the public engagement plus a petition containing 191 signatures. This did not include pins placed on a map at the A and P Show in December 2025. The public engagement period closed on 15 February.

Council staff will now analysis all feedback over the coming month and then provide an analysis to a Council meeting. The bylaw is required to be reviewed every ten years and the review needs to be completed by June 2026.

At present the only Whangārei District Council vehicle bans in place are both sides of the Ruakaka Estuary and the western end of Langs Beach as well as dune areas under the Council's management..

However the Department of Conservation has a ban on vehicles driving in the dunes and the Northland Regional Council under a direction from the Environment Court to better protect sensitive environments, amended its Regional Plan to ban vehicles from some Northland beaches including a section of beach stretching northwards for a kilometre from the Waipu Estuary.

A person who breaches Council's Control of Vehicles on Beaches Bylaw is liable on conviction to a fine of up to \$20,000. Instant fines may also apply.

A person who breaches the Department of Conservation's Northland Reserves Bylaws is liable on conviction to a fine of up to \$5,000.

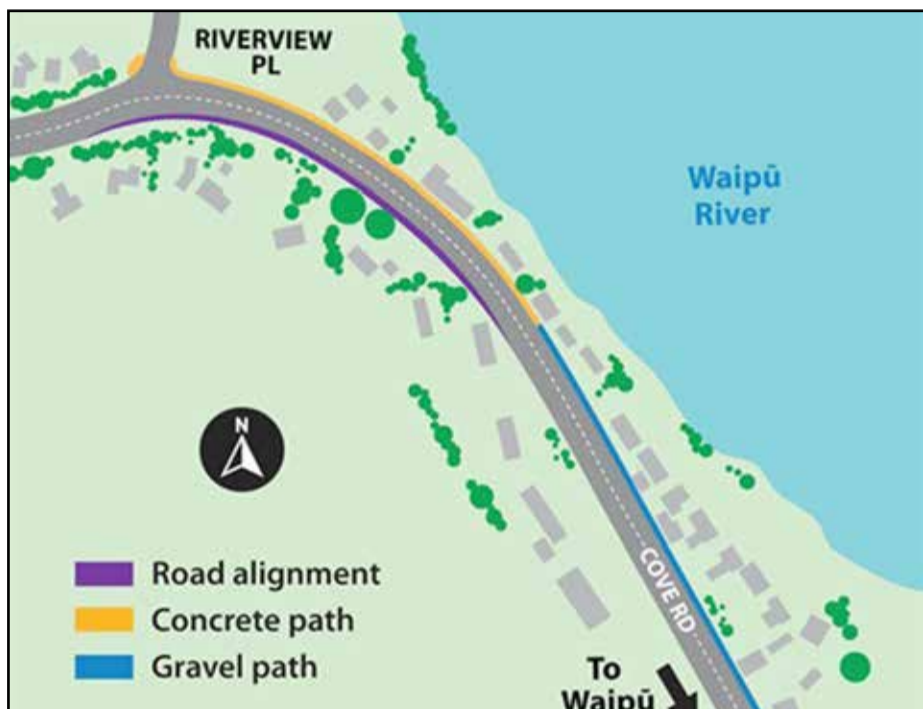
For breaches of Northland Regional Council's Regional Plan, abatement notices and fines of up to \$500 may apply.

THE NEXT PUBLICATION DATE

of the Bream Bay News will be Thursday 23 April
The deadline for all copy is 4pm on
Wednesday 15 April

The Waipu Cycle and Walkway will be completed in May

“It’s taken longer than expected but at least its happening now”



The contract to complete the final section of the Waipu Cycle and walkway has been awarded to Wharehine Construction. Work is set begin on 16 March to be completed in May 2026.

This is good news for the Waipu to Waipu Cove Cycle and Walkway Trust, which has been working on this project for upwards of 15 years. Trustee Ann Neill said it is worth celebrating that the trail will soon be finished and safe for people to use across its entire length.

Paul Wickham said, “It has taken longer than expected but at least it’s happening now!”

He had been concerned that in the current economic climate the funding which had long been allocated to this project would be put elsewhere.

Explaining the delay on the Whangarei District Council projects web page is the comment, “The cycleway runs through a residential area south of the Waipū township, and finding the best route has taken time and careful planning.”

This last section linking the trail from Waipu to Riverview Place with the section from Waipu Cove to the cemetery will be built on the eastern side of Cove Rd. with the western side of the road widened and realigned for approximately 300 metres.

A portion of the new section will be concreted with the remainder in gravel. It will be about 2.5 metres wide.

Rosythe Rd Bridge replacement underway

The replacement of the Rosythe Rd Bridge is underway. This will cost \$700,000 and will be completed in Mid- May 2026.

Asked why the replacement is needed the Whangarei District Council Communication Manager Jane Ashley replied that These works are part of our ongoing programme to maintain and improve key transport infrastructure across the District.”

In December 2025 the Council put out a tender for a “suitably qualified and experienced Contractor for the replacement of the Rosythe Road Bridge (No.559) with 6no. 750mm dia reinforced concrete piles, reinforced concrete abutments, wingwalls, settlement slabs and precast Hollowcore beams/deck and associated pavement works.”

As seen on Grand Designs 2019

COASTAL CONSTRUCTION PROJECTS

0274 320 007

REGISTERED MASTER BUILDER QUALIFIED TRADESMAN CARPENTERS MARCUS@CCP.NZ WWW.CCP.CO.NZ

WAIPU LOTTO & POST

Lotto Postshop Photocopying
 Emailing Newsagents All stationery needs

The Centre, Waipu Phone 432 0900

Waipu CARNIVAL

Easter Saturday - 4 April 2026

9:00am - 2.00pm

MARKET STALLS
LIVE ENTERTAINMENT ALL DAY
DELICIOUS FOOD
WHITE ELEPHANT
KIDS FUN ZONE
INFLATABLE ZONE
AUCTIONS & RAFFLES
BEAUTY ZONE

KOHA ENTRY **KOHA ENTRY** **KOHA ENTRY**

ALL PROCEEDS TO WAIPU PRIMARY SCHOOL **LIMITED EFTPOS BRING CASH**

PLENTY OF PARKING **SORRY NO DOGS**

SCAN ME ON YOUR CAMERA
TO DONATE!

A fun-filled day for the whole family! waipucarnival.com @waipucarnival

How we care for our dunes



Above : A drone photograph showing the damage four wheel drive vehicles are inflicting on the back dunes north of the Waipu River Mouth

Right: Rubbish dumped in the dunes alongside the Rama Rd. vehicle entrance to to the beach at Marsden Point





**STORAGE
BREAM BAY**
Mokohinau Street, Rukaka, 0116

LOCALLY OWNED AND OPERATED

- Safe and secure storage
- CCTV
- Easy access
- Storage solutions
- Reasonalbe rates
- Trailer available



CONTACT US

021 432 701
Brent Casey 021 272 2739
www.storagebreambay.co.nz
We are your local affordable storage solution

Another dump of animal guts in the river at Millbridge Road

There has been another dump of animal guts into the river under bridge on Millbridge Rd. in Waipu.

What looks like the intestines of a cattle beast was discovered in the river on Monday morning 9 April and has been reported to the Northland Regional Council incident hot line.

This is not the first time animal remains have been dumped in the river. The practice is of concern to people living downstream of the bridge as they use the river water for their stock and to water their gardens.

Electric bike raffle raises \$10,000 for Ruakaka to Marsden Cove Shared Path trail



The Bream Bay Shared Path raffle first prize of a Meloyello electric bike was won by Yvonne Judge who donated the bike to her son Derek. Pictured Derek takes possession of his new bike from Graham Trevors of Meloyellow Bikes Northland

The Bream Bay Shared Path raffle was drawn under the supervision of our local policeman Constable Wayne Ewers and the winner of the Meloyellow bike was Yvonne Judge. Yvonne has gifted it to her son Derek who is just loving it and riding everyday. A huge thankyou to Graham Trevors from Meloyellow who organised this generous prize

The second prize of a gift basket from Marsden Cove 4Square and a \$50 voucher from Oregano Restaurant and Bar was Carla McKinney and she was thrilled with her prize.

The 3rd prize was a 90 minute treatment from Driftwood Wellness and Kay O'Hagan was the lucky winner and will enjoy a massage/reflexology treatment from Nadine.

The Bream Bay Shared Path Group thanks all these generous sponsors and thanks to all the people who supported this project by buying tickets. The raffle raised \$10,000

Three rating options for the WDC's 2026/2027 Annual Plan

The Whangārei District Council is seeking community feedback on three rates options for its 2026/2027 annual plan.

Option A is to reduce the planned increase to 5%, while maintaining current levels of service. However if current levels of service are maintained this would create a \$6 million revenue shortfall and would increase future funding pressures

Option B would also see an overall planned increase of 5% but would change the sector share so that commercial and industrial property owners would pay a reduced proportion (22.7% rather than the current 24.1%) while the proportion paid by residential property owners would increase from 67.3% to 68.5% and rural property rates would increase to 8.8% from 8.6%. The same \$6 million revenue shortfall would apply.

Option C sticks with the Council's 2024 – 2034 Long Term Plan setting which would see a 10.1% rates increase across the board. This would put the Council in a stronger financial position with less risk of budget shortfall and less reliance on borrowing.

The Annual Plan consulting document and supporting documents can be found on the Whangārei District Council website in the Have Your Say section.

A feedback form can also be found here

Feedback closes at 4pm on Friday 3 April 2026.

The Council is holding a series of three drop in sessions at Te Iwitahi Civic Centre, 9 Rust Ave, Whangārei on its 2026 -2027 annual plan. Two of these sessions will have been held by the time this issue of the Bream Bay News reaches you but still to come there are sessions on: •Thursday, 19 March 2026 | 04:30 PM - 06:00 PM •Tuesday, 24 March 2026 | 12:30 PM - 02:00 PM The venue is Te Iwitahi (the civic centre), 9 Rust Avenue, Whangārei .

Convener appointed for McCallum Fast Track application

Commissioner and barrister, Helen Atkins, who has thirty years of experience in the areas of environmental, public, and local government law has been appointed Convener for the McCallum Brothers Ltd. Fast Track application to dredge sand in Bream Bay.

She has asked the Department of Conservation for its views on the application and has invited DOC to appear at the Conveners conference, which she will call this month.

Hi, I'm Fae Allen, your local Real Estate Agent

I've proudly called Waipu home for over 30 years and raised my family in this beautiful, caring community. It's a special place — safe, vibrant, and full of great people.

If you'd like an updated, no-obligation appraisal of your home to see how it's sitting in today's local market, I'd love to help.

Call or text me on 021 117 6030 to arrange a time. Looking forward to seeing you,

Fae Allen



BARFOOT & THOMPSON
LTD. REAL ESTATE

GRANT SHAND
BARRISTERS & SOLICITORS

NZTA Northern Corridor
Got a letter? Need advice?

Free consult

Leading lawyer and negotiator
30 plus years experience
Local

Contact

027 434 5489

www.grantshand.co.nz
grant@grantshand.co.nz



Thinking concrete but don't know where to start?

Think Atlas Concrete

- We quarry the aggregate
- We manufacture the concrete
- We site visit to advise the best options
- We give you the choice of mix and colours
- We give a choice of local placers for you to choose
- We manufacture concrete to your requirements
- We stand by our product, you stand on it

Atlas Concrete
Your First Call for Concrete
Ph: 0800 888303 - Brynderwyn
or 432 5030 - Ruakaka

Huge price hikes in house insurance premiums for many Bream Bay home owners

By James McCullough

When One Tree Point resident, Roger Neal, saw his house insurance renewal notice pop up in his email inbox, he didn't need to open it to know that his annual premium had almost doubled from last year.

Two weeks earlier, Roger had received a courtesy call from his Tower Insurance representative to warn him that his annual premium was going to rise from \$2700 to just over \$5000.

Since then, Roger has discovered through talking to friends and neighbours that he isn't the only one experiencing rising house insurance premiums.

Don Fraser, who resides further up the road by the Marsden Yacht Club, said he had recently received a 30% increase in his house insurance premium. He can't recall who he's with as his insurance was arranged through Rothbury Insurance Brokers however he's gone back to Rothbury's asking them to try and find a cheaper deal. At the time of writing, Don hadn't heard back. Don has lived in his One Tree Point address for 20 years but has only recently experienced a leap in his premiums.

Meanwhile down in Marsden Bay, one beach front resident who wishes to remain anonymous, says her house insurance premium had risen to the point she decided to dramatically reduce the level of cover in order to get a reduced premium. Her cover of \$200,000 is just enough to purchase a tiny home should her house be destroyed. For that amount of cover, she pays \$1880 p.a. to State Insurance.

Back at Roger's cliff top address, he's still trying to work out why his premium has suddenly leapt up given that he and his wife have resided there since 2009 with no major claims and as far he's concerned, no increased environmental risk from flood or tsunami. Being inundated by flooding or a tsunami is highly unlikely with Roger's residence approximately 9 metres above the spring tide level and 34 metres from the cliff's edge. He even has an engineer's report stating that the land on which his house sits is 'neither subject to nor likely to be subject to erosion for the 50 year life of the building'.

He expressed frustration with trying to reason with an insurance representative over the phone. "You're in New Zealand but you get an overseas person on the other end of the phone. They have no idea where you are and what the environment is like. They can't even imagine what we're talking about really. That's what I guess I find a bit annoying and when they're telling us that we're in the flood plain or could be flood-



Roger Neal on the beach below his home

ed or something like that, I go, well somebody really needs to come and have a look" he said.

Emily Davies, the Head of Corporate Affairs and Sustainability for Tower Insurance explained that their modelers consider "all publicly available data, defence and mitigation efforts including from the Earth Sciences New Zealand, Land Information New Zealand (LINZ), local and regional councils paired with other



Owner /Operator Duncan Mackay



GENERAL CARTAGE SERVICE
 Metal / Topsoil / Sand / Manure / Hay / Silage



WATER
 Prompt Delivery And Reliable Service.
 Healthboard Approved Drinking Water Carrier.

Call 021 070 8211

Waipu Volunteer Fire Brigade needs you !

Waipu Volunteer Fire Brigade is looking for guys and gals to join our close-knit team who are passionate about helping their community in a time of need.

Being a Firefighter is an amazing way to give back to your community and be part of an amazing supportive team at the same time.

For more information pop on down to the station on a Thursday night from 7:30 to have a chat with our team or send us a message on our Facebook page.

Phone the BREAM BAY NEWS 027 432 0070
 or email: breambaynews@xtra.co.nz
 if you know of something interesting going on in Bream Bay



Roger at the cliff edge of his One Tree Point home. The house is set 34 metres back so not at risk of falling into the sea.

data sets such as our own historic claims data.

In setting premiums, Tower combines this specialist data with property specific details such as construction type and estimated rebuild or replacement costs. Tower also factors in any mitigation measures implemented at a property, such as flood-proofing, seawalls, levees or retaining structures as well as additional information provided by homeowners”.

That was cold comfort for Roger who ended up going to Rothbury Insurance brokers who were able to find a \$1500 discount on his house insurance premium with AMI.

Steps to receive a possible discount

If like Roger and Don, you receive the alarming news that your house insurance premium has risen dramatically then consider taking the following steps to receive a possible discount:

- Increase your excess
- Contact your insurer to discuss the reason for the increase. The insurer could be using out of date hazard and environmental modeling to determine risk: i.e., flood and tsunami risk.
- Provide your insurer with engineer and geotechnical reports to counter their reasons for the increase
- Improve your risk profile: i.e., install smoke and security alarms, retaining walls, improved drainage etc. and provide proof of their existence to the insurer
- Check that you're not over insured – use the insurance company website calculator to work out the appropriate level of cover
- Make sure that your sum insured reflects the rebuild cost, not the market value
- Review optional add-ons such as excess free glass cover
- Bundle your policies: i.e. insure your house, contents and vehicles with the same insurer
- Shop around the various insurance companies to find the cheapest premium
- Use an insurance broker who will do the running around for you in order to find the cheapest deal. Sometimes they can access underwriters not available to the public.
- Pay annually instead of monthly
- Avoid making too many claims if possible otherwise you'll be deemed to be high risk.



Apply now for Meridian's Power Up Community Fund

We're proud to back local projects in the communities around our wind farms and hydro stations with our Power Up fund.

Power Up Ruakākā provides grants for projects in the communities closest to Ruakākā Energy Park that support sustainable community development.

How to apply

Applications are open until midnight on Sun 3rd May 2026. For more information and to apply:

- visit meridianenergy.co.nz/community-support/fund/ruakaka
- call 021 980 565
- scan the code below



POWER UP
COMMUNITY
FUND

The Marsden Material Girls

The Marsden Material Girls meet twice a month at the Marsden Yacht and Boat Club. It's a beautiful venue - right on the water. They work on their individual projects with support, advice and encouragement from one another. But every year they are given a challenge – this year it was a portrait. For this Sandra Johnston created a “Vintage Diva”. Behind her spread out on tables are other entries. .

Marsden Material Girls exhibit in Bream Bay often in the Ruakaka Library. Their work has appeared at the Quarry Gardens and individuals take part in various regional, national and international events.

Sandra said after moving down from Whangarei to Ruakaka finding this group of like minded mature women helped her enormously.

“Coming here twice a month has made my life a lot happier. It is really enjoyable to spend time with a group of other mature women.

Sandra also holds a piece, which won a place in an international touring exhibition. The assignment was to illustrate a vase of flowers with a requirement that the vase be recognisable. Having just received her exhibit back Sandra thinks she will make it into a cushion.

Rosemary Drinnan has a pile of individual art pieces, each in vivid colour palettes. She employs a variety of techniques including stamping, stenciling and hand stitching as well as quilting. She has found that recycled milk filter socks from the cowshed make a great backing material.

She uses all kinds of fabric including felt and polar fleece and doesn't worry too much about edging. She mixes and matches colours and textures.

She said working on these pieces is her “happy place.”

“There are no rules. It's very freeing”

She holds one of her creations which she has used to cover the seat of a wooden ladder chair - A family heirloom.

Ngairie Fleming, one of the group's founding members said many of the



Sandra Johnstone with her “Vintage Diva” her entry in the Marsden Material Girls annual challenge. Other entries are spread on the table behind. Sandra said coming to the fortnightly group work sessions has made her life happier than it would otherwise have been



Rosemary Drinnan mixes colours, fabrics and techniques to make her colourful free form creations. Here she has used one of her pieces to cover the seat of a wooden chair. She works without a pattern which she says is very “freeing.”

She says creating these artworks is her “Happy place.”



The Marsden Material Girls and their visitors from the Hibiscus Coast

members use their skills to benefit the local community. Ngaire makes a quilt each year for Bream Bay Coastal Care's annual Christmas raffle. The quilts always have a bird theme. She has already begun work on this year's offering.

Rob Posthumus introduced a design for carry bags made with fabric and mesh to safely store and keep work in.

Ngaire said most of the women who join Marsden Material Girls already have sewing skills but members are very willing to share their knowledge with one another.

Margo Wakelin and Lindsay Dobbison both sew for a project called "Dress a Girl around the world." They make summery dresses for little girls in the Pacific Islands and sometimes in the far North of NZ who would not otherwise have new clothes. Recently this has branched out to include shorts and T shirts for both boys and girls. They also sew for a charity called Days for Girls where they make little packs with personal hygiene items for girls who might not be able to afford commercial sanitary products. These are sent into South Auckland.

Last Friday 28 February 2026 they hosted a group of four women from the Hibiscus Coast Quilting Group which has 57 members for a shared morning tea and an exchange of ideas.



Irene Kilpatrick seeks advice on a large quilt she is working on.



Summerset Mount Denby Care Morning Tea Tour & Dementia Talk

Summerset Mount Denby in Whangārei is a vibrant and growing community. Our newly opened village centre offers a fantastic range of indoor and outdoor facilities for you to enjoy.

Join us for morning tea with our friends from **Dementia Tai Tokerau**, who will share practical ways we can all help improve the quality of life for people living with dementia. Afterwards, enjoy a **guided tour of the brand new village centre**, including our care centre, memory care centre, and serviced apartments before our first residents move in.*

Love the life you choose.

Care Morning Tea Tour & Dementia Talk
Sunday 29 March, 10am

Summerset Mount Denby, 7 Par Lane, Tikipunga
Call Wendy on 09 470 0282 or 021 246 5086



*Homes sold under licence to occupy, subject to availability and eligibility criteria. Care subject to certification. Summerset does not offer rental accommodation. Images are indicative.

RUAKAKA SAFE STORAGE

99 MARSDEN PT ROAD, RUAKAKA
 92 Units from 6 x 3 to 1 x 1
 Each unit individually alarmed and monitored
 Electrified security fence
Ph. 0508 273 262 or 0275 310 788
 CLEAN - DRY - SECURE

BREAM BAY STORAGE

INSIDE/OUTSIDE storage at 50 Cove Rd., Waipu

Free phone. 0800 432 135
 enquiry@breambaystorage.co.nz

www.breambaystorage.co.nz

Ruakākā Lotto, Post & Gift Shop

Ruakākā Town Centre
 Shop local for all your needs:
 Stationery, Toys, Magazines,
 Greeting Cards & Gifts, Prezzy Cards
 Printing & Drycleaning services

Phone
 09 988 9370

Open Wednesday & Saturday until 6pm.

KAIWAKA KNITTING GROUP NEEDS YARN FOR KNITTING FOR GARMENTS FOR WHANGAREI HOSPITAL PATIENTS



We are running out of yarn to knit. Do you have wool, synthetic, cotton or any yarn tucked away that you will never use and could give to us? We are a small group who meet every second Tuesday of the month at 10am at the Archie Bull Hall in Kaiwaka. We knit various items for the children in Ward 2 and dialysis patients at Whangārei Hospital.

Although we have had generous amounts of yarn already we need more in any quantities
 Should you be able to help

We also need donations of cotton or cotton blended fabric to make items for children.

Please phone Gale 09 431 4827 or leave donations at the Apple Basket on SH1 at Kaiwaka.

Community picnic at the Marsden Yacht and Boat Club



The Marsden Yacht and Boat Club held a family picnic last Sunday afternoon 8 March with three legged and egg and spoon races, a make a paper boat challenge, a tug of war, lolly scramble and a bouncy castle with a water slide.
 Pictured: from left Fergus Gibbs aged 11 years, Ben Hay - 9, and , behind Ben, Jaxon Platt – 10 at the top of the water slide.

Work begins on new electricity sub transmission line linking Maungaturoto and Mangawhai sub station

Northpower has broken ground on a \$20 million project to build a new sub transmission line from Maungaturoto to Mangawhai substation, which will increase security of supply to the region.

This project follows the recent completion of the Mangawhai Central zone substation in 2024 and marks the next stage of ensuring that residents and visitors to the area benefit from a resilient, electricity supply. A blessing was held with Te Uri o Hau of Ngāti Whatua Kaipara in February to prepare for the commencement of work on the 34km line.

Chief Operating Officer – Network Michael Gibbs says, “This major project is a key investment for

Northpower, providing increased security of supply to cater to a growing population in Mangawhai”. He said, “Northpower would like to thank all land-owners and stakeholders that have supported the project to date and we appreciate your ongoing support while works continue”.

Work along the new line has started and there will



A blessing ceremony for the start of the Mangawhai 33kV line build project

be some traffic management in place on Baldrock Road and Cove Road from March to June while this section is completed.

The work is targeted to be complete by mid 2027

Bream Bay players dominate the podium at Janet Agnes Carnival of tennis

By Paul Ramsay



Ben Donaldson (Waipu) and Andrew Ramsay (ex Waipu) won the Men's A grade.

The Janet Agnew Carnival of tennis, Northland's biggest tournament saw players from the Bream Bay area dominate the podium. Ben Donaldson (Waipu) and Andrew Ramsay (ex Waipu) won the Men's A grade. Life member Greg Miller and son Chris won the Men's B grade while Paul Ramsay and partner Dave Lobb (Maunu) were third. James Donaldson and Connor Taylor won the Men's B plate. Raewyn Heywood (Springfield) and her partner won the Women's A grade while Raewyn's daughter Shelley and granddaughter Tayla won the Women's B grade. On the Sunday Ben Donaldson played with Auntie (Wendy Jambor) to finish third in the A grade combined doubles. James Donaldson and Hayley Pyle were third in the B grade mixed doubles. Connor Taylor and Emma Donaldson (filling in for Shauna Taylor) won the mixed plate.

McLeod's Waipu One Set Wonder was held on a warm, sunny day and enjoyed by the 16 teams that entered. Men's A winners were Bones (Mike) Walters and Noah Jones who beat fellow Mairtown members Karl and Lance Hicks in the final. Raewyn Heywood and Maryanne Rogers won the Womens division over Waipu members Hayley Pyle and Emma Donaldson. Gary Coutts (Waipu) teamed with his cousin Duncan to win the B grade men's competition over another cousin pair of Peter and Kerry Jenkins.

Our Tuesday night social tennis continues to be well supported. Now is a good time to join the club as games are made up on the night and it is easier to cater for differing abilities.

Every Wednesday morning starting at 9am is opportunity for those people lucky enough not to work or

able to sort their workday to play tennis. Come along and join in this extra day. If you haven't played before this is an opportunity to try tennis as well. Games will be arranged as people arrive. Family Friday nights are continuing on as they have been well supported.

The Waipu Tennis Club is a member's only club and not a public venue hence the reason it is locked up and why scooters, bikes and skateboards are not allowed in the court area. Recently some damage has been done to our Astroturf courts by someone riding a scooter. If you spotted someone on the courts with a scooter, please let the committee know.

Waipu Raiders A grade on 68 points have their noses just in front of Mairtown Next Gen (67) but there is a big gap to the third placed team. Waipu Black B grade are leading their competition still. Waipu yellow B grade are tenth in the same competition.

The Sawmill competition is underway and three weeks into the competition four teams are within a point of each other – McLeod's, GD Plumbing, Millers Marauders and Team Sawmill

Club Champs will be part of our programme in this half of the season so sort your partner for the doubles and combines and be ready to enter.

As part of the "Bream Bay Have A Go" sports promotion the club will be running a morning on 28 March from 9-12 for anyone interested in tennis. Put this date in your calendar.

Remember to check our Facebook page for what is going on at the club and watch for featured committee members.

National Cherub racing Championships at the Marsden Bay Yacht and Boat Club

The national Cherub sailing Championships will be held at the Marsden Bay Yacht and Boat Club on Saturday afternoon 28 March and then on Sunday morning 29 March.

Some celebrated members of New Zealand's sailing fraternity will be there including: Mark Orams former world champion sailor and member of Team NZ,

Mike Sanderson world sailor of the year in 2006, the youngest skipper to ever win a Volvo Ocean Race. He was 35 years old at the time.

Also father and son duo Will and Merrick Leitch.

The Cherub is a 12 feet long high performance-planning dinghy designed in New Zealand.

MARSDEN POINT HIGH TIDES

| | AM | PM | | |
|--------------|-------|-----|-------|-----|
| Thu 12 March | 2.32 | 2.3 | 2.39 | 2.2 |
| Fri 13 March | 3.28 | 2.3 | 3.34 | 2.2 |
| Sat 14 March | 4.28 | 2.2 | 4.34 | 2.2 |
| Sun 15 March | 5.27 | 2.3 | 5.35 | 2.2 |
| Mon 16 March | 6.20 | 2.4 | 6.33 | 2.3 |
| Tue 17 March | 7.09 | 2.5 | 7.26 | 2.4 |
| Wed 18 March | 7.54 | 2.6 | 8.14 | 2.5 |
| Thu 19 March | 8.38 | 2.7 | 9.01 | 2.6 |
| Fri 20 March | 9.22 | 2.8 | 9.47 | 2.7 |
| Sat 21 March | 10.07 | 2.8 | 10.33 | 2.8 |
| Sun 22 March | 10.52 | 2.8 | 11.20 | 2.8 |
| Mon 23 March | 11.40 | 2.8 | ~ | ~ |
| Tue 24 March | 12.09 | 2.8 | 12.29 | 2.7 |
| Wed 25 March | 1.01 | 2.7 | 1.22 | 2.6 |
| Thu 26 March | 1.57 | 2.6 | 2.19 | 2.5 |
| Fri 27 March | 2.59 | 2.5 | 3.22 | 2.4 |
| Sat 28 March | 4.05 | 2.5 | 4.29 | 2.4 |
| Sun 29 March | 5.10 | 2.5 | 5.37 | 2.4 |
| Mon 30 March | 6.11 | 2.6 | 6.39 | 2.5 |
| Tue 31 March | 7.05 | 2.6 | 7.34 | 2.5 |
| Wed 1 April | 7.55 | 2.6 | 8.24 | 2.6 |
| Thu 2 April | 8.40 | 2.7 | 9.09 | 2.6 |
| Fri 3 April | 9.22 | 2.6 | 9.51 | 2.7 |
| Sat 4 April | 10.02 | 2.6 | 10.30 | 2.6 |
| Sun 5 April | 9.40 | 2.6 | 10.09 | 2.6 |
| Mon 6 April | 10.17 | 2.5 | 10.47 | 2.6 |
| Tue 7 April | 10.55 | 2.4 | 11.26 | 2.5 |
| Wed 8 April | 11.35 | 2.4 | ~ | ~ |
| Thu 9 April | 12.09 | 2.4 | 12.18 | 2.3 |
| Fri 10 April | 12.56 | 2.4 | 1.06 | 2.3 |
| Sat 11 April | 1.48 | 2.3 | 1.59 | 2.2 |
| Sun 12 April | 2.44 | 2.3 | 2.57 | 2.3 |
| Mon 13 April | 3.40 | 2.3 | 3.57 | 2.5 |
| Tue 14 April | 4.34 | 2.4 | 4.56 | 2.4 |
| Wed 15 April | 5.25 | 2.5 | 5.51 | 2.5 |
| Thu 16 April | 6.14 | 2.6 | 6.43 | 2.6 |
| Fri 17 April | 7.03 | 2.7 | 7.33 | 2.7 |
| Sat 18 April | 7.51 | 2.8 | 8.22 | 2.8 |
| Sun 19 April | 8.40 | 2.8 | 9.12 | 2.9 |
| Mon 20 April | 9.30 | 2.8 | 10.02 | 2.9 |
| Tue 21 April | 10.22 | 2.8 | 10.53 | 2.8 |
| Wed 22 April | 11.15 | 2.7 | 11.47 | 2.8 |
| Thu 23 April | ~ | ~ | 12.10 | 2.6 |
| Fri 24 April | 12.45 | 2.7 | 1.09 | 2.5 |

THE NEXT PUBLICATION DATE

of the Bream Bay News will be Thursday 23 April

The deadline for all copy is 4pm on

Wednesday 15 April



Justices of the Peace

Ruakākā

Paea Paki 021 149 1625
 Darrell Trigg 09 432 7256/021 332 901
 Ken Orr 09 432 8215
 Wayne Buckland 022 644 5376.

One Tree Point

Jules Flight 0274 777 210
 Sir John Goulter 021 612 442
 MM Jolley 027 415 9486
 Ian Bogue 0274 300 418
 Grant Brown 027 248 7126
 Sharon Carroll 0272653227

Waipu

Trevor Vaile 021335 075
 Doug Scott 027 229 9752
 Ken Couper 027 292 0524
 Angela Stolwerk 021 823 966
 Chris Martin 027 367 2947
 Mary Abercrombie 021 598467

Make contact with a Justice of the Peace (on any day) and make an appointment to have your documents completed.
 A service desk also operates 10am to 11am on Saturdays in the Ruakākā Library.

Volunteers needed at the Waipu Easter Carnival



Waipu Presbyterian Parish

~ Working with you - for your Community ~

Sunday Services

27 Camellia Ave, Ruakaka - 8:45am
50 The Centre, Waipu - 10:15 am

Office Phone: 09 432 0534 Email: waipupresby@outlook.com
 Search for us on Facebook and YouTube

Phone the BREAM BAY NEWS 027 432 0070
or email:breambaynews@xtra.co.nz
if you know of something interesting going on in Bream Bay

The Waipu Primary School Easter Carnival is coming around again and will be held on Easter Saturday 4th April from 9 am to 2 pm in the Caledonian Park.

This is the 18th Waipu Carnival and as well as the usual attractions – a big white elephant stall, a collection of inflatables for kids to bounce on (sponsored this year by Camp Waipu Cove), entertainers on a central stage, there are a few new additions.

James Alexander of Ray White has sponsored a four in one bungy where with the safety of a harness jumpers can reach heights of eight metres and if they are confident enough, perform summersaults.

Circus Kumarami will bring some of its acts to the stage and the Waipu Lions will be donating all the proceeds from its food stall back to the school.

The carnival committee said in a press release,

“As cost-of-living pressures remain front of mind for many, organisers have doubled down on making this year’s event the most accessible and affordable family day out on the Northland calendar. Entry remains by koha or gold coin donation, with a heavy focus on free all-day entertainment.”

Carnival Coordinator Sarah Tesniere –“By keeping entry low and providing a huge variety of free state shows and low cost activities” the committee is ensuring that carnival fun is available to all.”

The Waipu Carnival Crew is currently seeking local volunteers to help look after stalls for a few hours, as well as businesses interested in sponsorship opportunities. The Waipu Easter Carnival runs from The Carnival is the major fundraiser for Waipu Primary School and is powered entirely by volunteers. Proceeds from this years Carnival are earmarked for property projects and classroom technology For volunteer or sponsorship enquiries, please contact: waipucarnival@gmail.com.

MAGIC TYRES

Large selection of used & new tyres
Car & Trailer Rims

Ph. 438 3534 103 Port Rd., Whangarei

A busy Sunday morning market day in Waipu



The Waipu Community Market in the Coronation Hall on Sunday morning 8 April

Correction - The Catholic Church Hooley is on Sunday not Saturday

The Bream Bay Catholic Church “hooley” is on Sunday 15 March not Saturday as we mistakenly said in the previous issue of the Bream Bay News.

The hooley” and there will be music, dancing an art exhibition, a sausage sizzle and a chance to look at plans for the new Bream Bay Catholic Church.

As this just a couple of days prior to St. Patrick’s day the hooley will have an Irish theme and those attending are invited to dress up in their best green outfits.

Plans for the new church have been put before the Bishop of Auckland for his approval and Trigg Construction is likely to start work on the new building next month. It will be built alongside the current church at 27 Peter Snell Rd., Ruakākā. The “hooley” will be held in the church grounds.

FIFTY YEARS AGO IN THE BREAMBAY NEWS

From the April 1976 edition

The Waipu Rugby Football Club would like to thank all those business and supporters whose invaluable assistance enabled them to celebrate successfully their centennial

The club and facilities in the new clubrooms are now open to anyone wishing to sue them and club members look forward to meeting new people.

Bream Bay College Principal Mr. W Aston reptss that \$32,000 of the \$35,000 needed for the new College and Community swimming pool has so far been raised.

The pool is nearing completion and should be in operating order in approximately a month’s time.

A swimming club is to be formed soon to run and control the pool out of school hours.

It is designed so that members of the community will be the officers and members of the new club.

WHAT’S ON IN BREAMBAY

- **HANDS OFF OUR SAND PROTEST.** On Sunday 15 March. at Ruakākā Beach Meet in the carpark alongside the Ruakaka Surf Lifesaving Club at 10.30am.
- **BREAM BAY CATHOLIC CHURCH “HOOLEY”** on Sunday 15 March., 2pm to 5pm at the Holy Family Catholic Church, Peter Snell Rd., Ruakākā. Music, dancing, an art exhibition, a sausage sizzle and a chance to look at plans for the new Bream Bay Catholic Church. St. Patrick’s day theme so wear green.
- **OPERA IN THE GARDEN** 30th Anniversary of Opera North. Alfred Fonoti Fuimaono & Sarah Mileham. 21 March at Tahamoana Farm Tickets from Eventfinda or from Waipu Hammer Hardware.
- **SUNSET MARKET AT MARSDEN COVE** First Friday of the month 4pm to 8pm. Next market 3 April
- **WAIPU EASTER CARNIVAL** Saturday 4 April 9am to 2pm in the Waipu Caledonian Park
- **WAIPU STREET AND PARK MARKET** Alongside the Carnival on Saturday 4 April 9am - 2pm. Stalls in the main street of Waipu, the Caledonian Hall and in the park
- **WAIPU VILLAGE MARKET.** In The Waipu Coronation Hall. 9am to 1pm Second Sunday each month. Next on Sunday 12 April
- **BREAM BAY MUSIC GROUP** First Monday of every month starting at 7pm At the new Rec Centre in Peter Snell Road, Ruakākā. Contact Ross or Fulco on 0274 410 584
- **COMMUNITY CONNECTIONS** Fridays 10.30 -12noon, Bream Bay Community Trust Hall, Takutai Place, Ruakākā
- **COMMUNITY BINGO** Last Wednesday each month (except December) Every one welcome. Raffles, restaurant and Bar open from 5 pm. Calling starts at 7pm 15 games and 2 jackpots open to the public. At the Waipu Citizens and Services Club - The RAZZA
- **WAIPU MUSEUM** 36, The Centre, Waipu. Open seven days 10am- 4pm

BREAM BAY



THIS SERVICE RUNS ON THURSDAYS
EFFECTIVE 1ST AUGUST 2025

Bream Bay - Whangārei

Bream Bay to Whangārei (Morning - AM)

THURSDAY ONLY

| | |
|---|-------|
| Depart Kaiwaka (Bus stop below St Paul's Church) | 9:00 |
| Mangawhai Village (Village Shops Bus Stop Outside Bennetts) | 9:15 |
| Mangawhai Heads (The Club) | 9:20 |
| Langs Beach (Corner of Wairahi and Cove Roads) | 9:35 |
| Waipu Cove (Opposite Beach Car park) | 9:40 |
| Waipu (Vet Centre Bus Stop) | 9:50 |
| Ruakākā (Peter Snell Road - opposite Takutai Place) | 10:10 |
| Arrive Whangārei (Rose Street Bus Terminus) | 10:50 |

Whangārei to Bream Bay (Afternoon - PM)

THURSDAY ONLY

| | |
|--|------|
| Depart Whangārei (Rose Street Bus Terminus) | 3:00 |
| Ruakākā (Peter Snell Road - opposite Takutai Place) | 3:40 |
| Waipu (Vet Centre Bus Stop) | 4:00 |
| Waipu Cove (Opposite Beach Car park) | 4:10 |
| Langs Beach (Corner of Wairahi and Cove Roads) | 4:15 |
| Mangawhai Heads (The Club) | 4:30 |
| Mangawhai Village (Village Shops Bus Stop Opposite Bennetts) | 4:35 |
| Arrive Kaiwaka (Bus stop below St Paul's Church) | 4:50 |

| Fares | ONE WAY | RETURN |
|-----------------|---------|---------|
| Kaiwaka | \$7.50 | \$11.00 |
| Mangawhai | \$7.50 | \$11.00 |
| Mangawhai Heads | \$7.50 | \$11.00 |
| Langs Beach | \$7.50 | \$11.00 |
| Waipu Cove | \$6.50 | \$9.00 |
| Waipu | \$6.50 | \$9.00 |
| Ruakākā | \$5.50 | \$8.00 |

THESE ARE APPROXIMATE
TIMES AND WE SUGGEST
ARRIVING 5 MINUTES PRIOR
TO ADVERTISED TIMES

ROUTE DESCRIPTION

Kaiwaka/Mangawhai Road, Molesworth Road, Mangawhai Heads Road, Cove Road, The Centre Waipu, Nova Scotia Drive, SH1, Marsden Point Road, Peter Snell Road, Marsden Point Road, SH15A, SH1, Otaika Road, Maunu Road, Walton Street, Rose Street Bus Terminal.

ALTERNATE STOPS

If you would like to be picked up elsewhere along the route, please phone Leabourn's to arrange this on the Wednesday before you want to travel.

Bream Bay Link is operated with support from Northland Regional Council, NZTA and Leabourn to help Northland grow.



P 0800 994 404
E office@leabourn.co.nz



SERVICE INFO www.buslink.co.nz

TRADES & SERVICE DIRECTORY 0274 32 0070

Local people read
THE BREAM BAY NEWS
It is an effective
place to advertise

027 495 4548

BREAM BAY GLASS
FOR ALL YOUR GLASS NEEDS



AMG
AUTO MOBILE GLASS

**FAST WINDSCREEN REPLACEMENTS
& CHIP REPAIRS**

- Mobile service or come to our workshop
- Ultra competitive pricing. • Insurance claims welcome.
- Windscreen replacement in under an hour.

Phone Conrad on 022 036 2916
2/17 Gumdigger place.

BRADLEY
EARTHWORKS

• POND CLEANING • DRIVEWAYS • RACEWAYS
• LAND CLEARING • TREE REMOVAL • ROADING AND MORE!

CALL ME TODAY FOR ALL YOUR EARTH & TREE WORKS
PHONE ROY 027 374 5090 WAIPU

ABSOLUTE CONCRETE

www.absoluteconcrete.co.nz
CULVERT PIPES
Spun and reinforced
Crane truck delivery
Drainage Merchant - Hardware Store
Email: sales@absoluteconcrete.co.nz
Phone (09) 431 2211
KAIWAKA

MACSWAY
SCAFFOLDING LTD

WE BUILD, HIRE, ALLOY MOBILES, TEMPORARY
FENCING, & SHRINKWRAP

Ph: 09 432 7643 • 0274 726 772
macsway@xtra.co.nz Kapa Road, Ruakaka

O'MALLEY CONTRACTING LTD | CONCRETE SPECIALISTS

- FOUNDATIONS
- HOUSE SLABS | STAIRS
- RETAINING WALLS
- DRIVEWAYS | CARPARKS
- EXPOSED AGGREGATE
- COLOURED CONCRETE
- COMMERCIAL | RESIDENTIAL
- LICENCED BULDING PRACTITIONER

Free No Obligation
Quote

FAMILY OWNED & OPERATED

021 2200 198 | OMALLEYCONTRACTING.COM

Bream Bay Concrete Ltd.

Free Quotes • Reliable Service • Quality workmanship

- Concrete pads
- Shed floors
- Pathways
- Home floors
- Driveways
- Concrete cutting
- Excavation works
- Retaining walls
- Paling fences
- Profiles for homes & sheds
- Subfloors & boxing

Mark Royals Ph: 432 0107 Mob: 0274 433 130

BREAM BAY ELECTRICAL


Wiring Safe Homes And Businesses
Throughout Northland

RESIDENTIAL COMMERCIAL INDUSTRIAL

0800 223 555 | 027 35 33 555
www.breambayelectrical.co.nz

TC & ENGINEERING
Metalwork Specialists

Stainless and Aluminium Welding
and Bespoke Fabrication



Gates and outdoor furniture. Marine repairs and fabrication.
Onsite welding for farm repairs and modifications.
www.tcengineering.nz 021 145 7075 or 021 203 0309

Tractor Mulching

100hp tractor with high bodied yffails,
mulcher, park finishing mowers, slashing
Gorse & blackberry spraying



Also mechanical tractor
repairs

Phone Bain McGregor
0274 979 013
or 09 432 0527

SIMPLY HEALTH AYURVEDA
Natural Wisdom of Health and Well-being

.Digestive Issues .Dietary Guidelines for Body Types
.Metabolic Syndrome .Physiological Health Disorders
.Detoxification Therapies

www.simplyhealthayurveda.com
Kaiwaka

Ruakaka Motors

**Mechanical and Auto Electrical
Repairs and Servicing**

Monday - Friday 7.30am - 5pm
Tyres and Batteries
WOF testing Gold Card discount
Drop off, pick up service available in Waipu
Phone 432 7233

PARADISE QUARRY

PARADISE QUARRY STONEMASONS
Specialists in stunning stone for landscape
Suppliers & installers of northland's own schist for all your
stonemasonry & landscaping Requirements

(09) 432 2722 or GEOFF (021) 972 139
www.paradisequarry.com

BREAM BAY ACCOMMODATION

RUAKAKA

STUDIO - HOLIDAY HOMES - B&B
BOOK ONLINE OR PHONE
Ph: 09 432 7025 Mob: 021 2722 739
website for online bookings: www.breambayaccommodation.com

BLIND PRO

Blinds • Awnings • Shutters

Indoor blinds and outdoor screens
Call us today for a free, no obligation
consultation and quote

ph 09 423 9661
website www.blindpro.co.nz
email info@blindpro.co.nz

McQUINN PUMPS

How's Business?
... It's Pumping!

24/7 SALES, SERVICE & INSTALLATION | PUMPS & WATER TREATMENT
PHONE SUPPORT AVAILABLE

NOW AT 72 KIOREROA ROAD
—ALONG FROM RD1 & ITM

0800 627 846
PHONE FREE

Deadline for next issue - Wednesday 15 April

TRADES & SERVICE DIRECTORY 0274 32 0070



HANSEN

Drainage & Earthworks

DRAINAGE:
 * Septic Systems * Water Tanks * Truck & Digger Hire *
 * Subdivisions * Domestic * Commercial *
 Certifying Drainlayers

Licensed Contractor for
Waste & Drainage Work



EARTHWORKS:
 * Subdivisions *
 * Farm Work: Effluent Pond Design & Build, Dams, Races *
 * House Sites * Driveway Prep * Lawns * Roothing *

P. 09 432-7877 M. 027-432-7877
 E. karl@hansende.co.nz




WORTHY AG

SMALL BLOCK MULCHING

Phone COLIN (Joe) 0274916983

PLASTAWORKZ

INTERIOR PLASTERING

Specialising in renovation, alterations, small jobs & repair work

GLEN
 021 223 2003
 plastaworkzwhangarei@gmail.com
 www.facebook.com/plastaworkz



INTEGRATED

ELECTRICAL • SOLAR • HEATPUMPS

Bream Bay's one stop shop for residential and commercial solar energy systems, heat pumps, new build projects, security systems and maintenance

Phone 09 430 0280

 **MASTER ELECTRICIANS** integratedes.co.nz

LAWSON

CARTAGE

FOR ALL YOUR EARTHWORKS & CARTAGE NEEDS
 Suppliers of: topsoil, compost, woodchip, bark, sand, pebble, rocks and firewood.

Ph/Fax 09 432 8418 or 021 768 940

458 Marsden Point Rd. PO Box 142, Ruakaka 0151
 email: lawsoncartage@xtra.co.nz

GREG STEWART

Qualified Builder...License # 106626



Over 45 years experience
 Prompt Service

Ph 021 317 555
 Email gpstewart56@gmail.com

SMALL ALTERATIONS..
 DECKING..FENCING
 BUILDING REPAIRS..HANDYMAN

NO JOB TOO SMALL GIVE ME A CALL

Floorcraft.

Residential & Commercial

CARPET, CARPET TILES, VINYL & VINYL PLANKS

Clive Adams
 Owner/Operator hello@floorcraft.nz
 021 221 5244

49 Port Road Whangarei 0110 www.floorcraft.nz
 09 438 0527

LOW COST DRIVEWAYS & SURFACING NEEDS

Concrete or asphalt beyond your budget ...

We have the next best solution for a fraction of the price.
 Call for a quote, you'll be pleased you did!
 Paradise Quarry Contractors

Geoff (021) 972 139 or (09) 432 2722
 For contractors who 'think' ...



THE MAINTENANCE

www.themaintenance.co.nz

House washing (chemical and non chemical), window cleaning, interior and exterior painting, staining and oiling, guttering cleaning, pest control, tree trimming

FOR A FREE QUOTE
 Ph. Tony 021 196 2949 or Melisa 021 075 6770



RayWhite

Top 3%
 OF THE RAY WHITE GROUP INTERNATIONALLY

JAMES ALEXANDER
 021 878 178

Licensed Salesperson, The Real Estate Shop Limited, Licensed (REAA 2008)



Plumbing & Heating CENTRE

- Plumbing New & Repairs
- Water Tanks & Pumps
- Gas fitting
- Drainage
- Roofing & Spouting
- Woodfire Installations

0800 326 123



BARFOOT THOMPSON & CO

I Love Selling Bream Bay!

Angelique Hartnett
 Coastal & Lifestyle Sales / AREINZ
 0274 356 411 / 09 435 5914 P
 a.hartnett@barfoot.co.nz E

GRAEME BINT FENCING

GOOD RATES, NO JOB TOO SMALL

09 432-1599 or 027-292-2833

grbint@xtra.co.nz

MANGAWHAI SMALL ENGINES

Grasshopper, Husqvarna and Honda dealer




194 Molesworth Drive, Mangawhai
 Ph: 09 431 5270 or Mb: 021 655 481
 Email: msengines@xtra.co.nz

Grant McLean

Stock Agent for Bream Bay

Ph 021 7758 48
 Email: skincarla@xtra.co.nz

All aspects of stock sales including:
 • dairy beef • bobby calves • store cattle • live export heifers
 • sheep • pigs • supplying stock for slaughter

Also caters for small block holders.




Rentals

Ray White Bream Bay & Waipu Property Management

021 198 3451 | rentals.breambay@raywhite.com

This Space Now available

\$42.80 gst inclusive or for regular customers (six or more insertions) \$38.50 gst inclusive

FOR HIRE



HERITAGE SCHOOL for Hire
 Available to Community Groups for regular hire, weekdays and evenings. Suitable for Conferences, Corporate hire

\$20.00 per hour, or \$100.00 per day

Good facilities with parking & outside space
 Terms and Conditions apply

Enquiries to J.Craymer. Ph 021169 339

MARSDEN YACHT & BOAT CLUB CLUBHOUSE FOR HIRE
 Available to Community Groups for regular hire, weekdays and evenings
 Fees only \$30.00 for half day sessions
 Also suitable for Corporate Hire, Conferences, etc.T's and C's apply
 Good facilities.
 Enquiries to K. Walker, Ph. 4327422

FOR SALE

HAY Conventional bales. Baleage rounds. All top quality. Ph. 027 432 0351

RAWLEIGH'S PRODUCTS
 Independent dealer.
 Phone Susan McRae
 027 227 2291.

WORMS FOR SALE
 For worm farms
 Phone or text
 027 432 0070

WATER TANKS
 09 431 2211
 sales@absoluteconcrete.co.nz

Treated framing timber
 Various sizes
 Surplus prices
 Scooters Plywood Ph no. 09 438 6565

SERVICES OFFERED

NORTHLAND HEADSTONES
 Located in One Tree Point
 Your Local Headstone Showroom
 Call 0800 707 800
 www.northlandheadstones.co.nz

SERVICES OFFERED




Professional Designed Websites
 Whether you're a small business, tradie, or a startup a great website helps customers find you.
 Professional designed websites for your business.
 Already have a website? I can update your existing site with a fresh, modern look — improved layout, clearer content, and better user experience.
 SEO & Google Ad Support

websites designed
 www.bbtrust.co.nz | www.kisinclusive.com
 Local Friendly Support | Affordable Prices
 Ella 021 888 605 | Email: wahineella@gmail.com



Tree Removal
 ✓ Pruning
 ✓ Chipping
 ✓ Stump grinding
 Qualified & Insured
 Ph Scott (0800) 468-9663
 Arborcare Tree Maintenance



WATER TANK CLEANING
 No need to empty your tank

- Vacuum or full scrub

Phone Mark Draper
 0274 707 607

JD LAWN CARE SERVICES
 Lawn mowing, Weed spraying, Water blasting, surface cleaning of driveways, paths and patios, Hedge trimming, Section clearing, tree pruning, wood chipping and more.

PH. 021 063 7907


SOCIAL SERVICES

BREAM BAY COMMUNITY FOODBANK
 022 582 5734

Calls are answered by volunteers Monday and Friday, 10am-3pm
 You may leave voice or text messages anytime and we will call back during our usual hours.

LINKING HANDS Health Shuttle

Phone (09) 431 8969



Local people read
THE BREAM BAY NEWS
 It is an effective place to advertise

SOCIAL SERVICES

BREAM BAY COMMUNITY SUPPORT TRUST
 Takutai Place, Ruakaka Phone: 09 432 7197



Services we provide:

- Registered Social Workers
- Family Support Workers
- Youth Workers
- Youth Holiday Programme
- Counsellors
- Community Connectors (Connecting community to various services)
- Free Whanau Ora Medical Clinic with Ki A Ora Ngatiwai. Fortnightly Wednesday mornings 10am-12noon, by appointment only phone 09 435 4586
- Free Budgeting Service –fortnightly on Thursdays 10am-1pm, by appointment
- Mana Wahine Ki Wahine Toa & Ha Tane groups
- Community Gardens behind our main building please help yourself
- Pataka Kai/ Food Pantry located outside our reception door.

Follow us on social media - Facebook and Instagram for updates on what is happening here during the week.

Safeman Safe family Men's Centre

Safeman Safefamily offers a safe place for men to talk privately without judgement and with complete confidentiality. We are peer led and professionally supported and offer a range of services and support for men and their families.

The services we provide are as follows:

- Advocacy Navigator
- Court support
- FGC Support
- Probation Community Service Provider
- Legal Advice
- Marriage Celebrant
- House and property blessing
- One to one counselling
- Drug and Alcohol support
- Anger management group sessions
- Supervisor for court ordered access
- Work brokers/ help with employment opportunities.

No appointments are necessary, we have an open door policeu - if you need help or know someone that does just come on down to: **9 Takutai Place, Ruakākā.** We are right next door to Jimmy's Barber Shop or I can be reached by phone 021 121 0763 - Phil Paikea



Not sure? Ask us!

We provide free, confidential and independent information and advice to help you understand your rights and responsibilities.

Contact us for assistance.
 09 438 8046 • whangarei@cab.org.nz
 www.cab.org.nz

EMPLOYMENT

PART TIME TOWN MAINTENANCE

If you are energetic and have a day or 2 to spare, Waipu Village Care is looking for someone 1-2 days a week to help mow lawns, clear gutters and rubbish bins.
Once familiar with the role you will be required to be full time backup for holidays/sickdays etc.
If this is for you, phone Graham Boulton on 0273978934.

ALDEN RANBURN -

Recruiting now!

We currently have the following vacancies within our aged care facility:
Caregivers - casual/part time including short shifts morning and evening.
Conveniently located within Waipu village we offer full training to successful candidates.
If you are reliable, take pride in your work and can work rostered shifts please apply by sending your CV to:
manager.ranburn@alden.co.nz

PUBLIC NOTICES

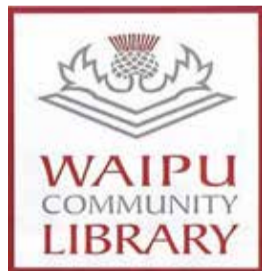
NORTHPINE COMMUNITY LIAISON COMMITTEE

This committee meets periodically to review the environmental performance of the Northpine timber manufacturing plant in Waipu, in consultation with representatives of the local councils. Any Waipu resident with concerns about the environmental effects of the Northpine plant should notify the Northpine office (432 1155). Concerns will be recorded, considered and subsequently reviewed by the liaison committee. The Independent chairperson of the liaison committee is Steve Goldthorpe 0274 849 764.

LIBRARY HOURS



RUAKAKA COMMUNITY LIBRARY
Takutai Place, Ruakaka
432 8406
Mon - Fri 9:30am-3:30pm
Sat 9am-1pm
JP Service available
Saturdays
10am - 11am.



Monday, Wednesday,
Thursday, Friday
& Saturday 10am - 1pm.
Tuesday
10am - 4pm.

THE NEXT PUBLICATION DATE

of the Bream Bay News will be Thursday 23 April
The deadline for all copy is 4pm on
Wednesday 15 April

PUBLIC NOTICES

Anyone interested in collecting **WHISKY MEMORABILIA** i.e. Jugs ashtrays figurines etc. or have any for sale please contact Jim on 09-431 3400
Thank you.

KW SINGERS PRACTISE



At Ranburn Care Home.
Tuesdays
1.15 - 2.45.
An un auditioned community choir
Anne Connolly - Munt
0274847576

AGM MARSDEN BAY GARDEN CLUB

19 March at 1pm
Bream Bay Community Trust (9 Takutai Place)



Need Help with Technology?

SeniorNet Bream Bay can help you with Apple, Microsoft and Android Desktops, Laptops, Phones, Tablets, Cameras
Learn at your pace, on your device,
we supply manuals/notes.

Please contact:
Learning Centre: 09 432 7692
Or email - seniornetbb@gmail.com
Course venue: Learning Centre,
7 Kapa Road, Ruakaka

CLASSIFIED ADVERTISING

Costs \$5.50 for up to 20 words and 20c for each additional word.
Boxed, classified adverts cost \$16.50 gst .inc.
Phone your advert through to 027452 0070
email it to breambaynews@xtra.co.nz
Post it to: Bream Bay News, RD 2 Waipu 0582
or leave it with payment at: The Waipu Post Shop or the Ruakaka Gift and Lotto Shop



Bream Bay Medical Centre Ltd. Ruakaka Town Centre, Ruakaka

Monday - Friday: 8.45 am - 5pm
Saturdays: 9am - 12pm

Marsden Cove Medical Centre 1A Ngawaka Lane, One Tree Point

Monday - Friday: 8.45am - 5pm
Please advise at time of booking
if you require an extended consultation

New patients welcome

Ph: 432 8060



Bream Bay Community Patrol

Working with the Police to reduce crime in the Bream Bay area.

To inquire about joining,
contact Senior Constable Jordan White
Waipu Police Station - 432 4030



BREAM BAY SUNDAY CHURCH SERVICES

Presbyterian Camellia Ave, Ruakaka: 8.45am. The Centre, Waipu: 10.15am.

Encounter 223 Marsden Pt. Rd, Ruakaka, 10am.

Anglican - ST PAUL'S Church, 25 Karawai St, Ruakaka 1st and 3rd Sundays 9.30am
ST. PETER'S CHURCH, 8 Nova Scotia Dr., Waipu 2nd and 4th Sundays, 09.30am


Catholic Holy Family Church, Ruakaka, 10.30am. Mass or Liturgy of the Word

Lifepoint. 300 OTP Rd, 10am.

Frazerhurst

Over 40 years in Whangārei

Curtains | Blinds | Awnings | Screens



Come and talk to us about your window furnishing requirements

- Free measure and quotes
- Free loan sample service
- Whangārei Showroom
- Satisfaction guaranteed

Weathermaster
Blinds | Awnings | Shutters | Umbrellas

146 Lower Dent St. Whangārei
Ph: 09 438 3986
www.frazerhurst.co.nz



Harcourts Waipu

5 Short Lane, Waipu
For Sale \$895,000

- Fully fenced property set on 5171m2
- Northerly aspect with bush and rural views
- 2-bedroom home featuring open-plan living
- Separate sleepout for guests or home office
- 20-foot container offers additional storage
- Parking area for a caravan, with on-site power
- Located next to Waipu Caves Farm Park
- A 10-minute drive from Waipu village

Roger King 0277 555 001

11 Three Rivers Lane, Waipu
For Sale \$979,000

- Brand new home in the Three Rivers Estate
- Stylish 3 double bedroom property
- Separate family bathroom and ensuite
- Open-plan living and dining areas
- The sunny, easy-care section is landscaped to ensure your privacy
- 10-Year Build Guarantee
- A short stroll from Waipu village

Christine Tierney 0274 881 883

140 Millennium Way, Waipu
Price By Negotiation

- Elevated 5,140sqm (approx.) section
- Panoramic views across Bream Bay
- Stunning, peaceful setting
- Power already to the boundary
- Partly framed by surrounding native bush
- An ideal platform for a well-considered build
- Call your architect

Lyndie Mullins 021 101 6389
Maxine Suvalko 021 0326 333

Harcourts Waipu | 7 The Centre, Waipu | 09 432 4000
Waipu Real Estate Limited Licensed Agent REA 2008



BBR

BREAM BAY REALTY

BREAM BAY REALTY LIMITED (LICENSED: REAA 2008)

Shop 11 | Town Centre | Ruakaka 0116 | NZ
PH: 09 433-0300 | bbrealty.co.nz
info@bbrealty.co.nz

Proud sponsors
SPCA
WHANGAREI

New Listing!



SURF CLUB GETAWAY
This spacious 5 bedroom, 2 lounge, 2 bathroom bach enjoys an unbeatable location — approx 200m from the surf lifesaving flags and opposite the beach walkway. Ideal for extended family stays or a shared holiday retreat. Internal garage provides secure storage, while the outdoor area offers ample space for tents, backyard cricket, or summer gatherings.
Set Date Sale 26/3/26 | bbrealty.co.nz #4280
FRANCIE STOKES
Mob: **022 656 0165**

OPEN HOMES—SAT & SUN 1.00—1.30pm
94A BREAM BAY DRIVE, RUAKAKA

SECURE YOUR SLICE OF THE EAST COAST
Limited sections are now available in this tightly held, sought-after subdivision—an exceptional opportunity to invest in a beach-side future. Enjoy an easy 10-minute walk to the surf club, with the local café and dairy just a short stroll away. The river and campground are close by too, adding to the relaxed holiday vibe this area is known for.
Set Date Sale 19/3/26 | bbrealty.co.nz #4278
FRANCIE STOKES
Mob: **022 656 0165**

New Listing!



HIDDEN GEM AT ONE TREE POINT
This property is a standout, nestled up a private right of way, in the established Kowi Lakes subdivision. Full of contemporary touches is this three-bedroom functional home. Elegant kitchen and bathroom finishing's including ceramic sink, sun filter blinds, soft touch light fittings, ceiling fans, and large heat pump. Sliders from all living spaces connect the inside to the outside patios.
Offers Over \$850,000 | bbrealty.co.nz#4273
FIONA SOUTHORN MNZM
Mob: **021 317 775**

SPRING, SUMMER OR WINTER
This spacious 196m2 family home will keep you cool, cosy and comfortable no matter the weather. Elevated and North facing with views over the manicured lawns and walkways of the La Pointe Beach Estate. Open plan living dining and kitchen, with an additional separate lounge, provide space and privacy. Solar panels for saving power and plenty of extra parking.
Price \$899,000 | bbrealty.co.nz #4262
FIONA SOUTHORN MNZM
Mob: **021 317 775**

MOVING ON—MOTIVATED VENDORS
Beautifully presented three-bedroom home that's move-in ready and designed for effortless living. The generous kitchen offers ample storage and flows into sun-soaked living areas that open seamlessly to a paved outdoor entertaining space. Enjoy the La Pointe Beach Estate resident-only amenities with boat ramps, local cafes, shops, and schools nearby.
Offers Over \$899,000 | bbrealty.co.nz#4253
KIM BROWN
Mob: **027 545 1208**

SLICE OF PARADISE
A lifestyle property at the beach. Two levels of Rustic Family Charm, with living areas, bedrooms and bathrooms on both floors, a kitchen, dining and winter warming woodfire welcoming you in the front door. A detached garage, workshop and plenty of room to expand. All within walking distance to the Ruakaka Estuary.
Price \$1,150,000 | bbrealty.co.nz #4228
JANINE GOLDSMITH AREINZ
Mob: **021 432 793**